

Telescopic Handlers

TL 435-10 - TL 442-13

Litronic®

Litronic®

Product Information

Uses in agriculture
and in biogas plants



LIEBHERR

Courtesy of Crane.Market

Telescopic Handlers

The telescopic handlers are available in four versions with lifting heights from 10 to 13 metres and load capacities from 3.5 to 4.5 tons. With outstanding lifting capabilities, excellent manoeuvrability and exceptional stability when driving under load, the Liebherr telescopic handlers are ideal for demanding applications in biogas plants and an enormous range of other agricultural tasks.

| Telescopic Handlers | | TL 435-10 <small>Litronic</small> | TL 445-10 <small>Litronic</small> | TL 435-13 <small>Litronic</small> | TL 442-13 <small>Litronic</small> |
|---------------------|-------|--------------------------------------|--------------------------------------|--------------------------------------|--------------------------------------|
| Engine output | kW/HP | 84/114 | 84/114 | 84/114 | 84/114 |
| Max. load. capacity | kg | 3.500 | 4.500 | 3.500 | 4.200 |
| Max. lifting height | m | 9,8 | 9,8 | 13,0 | 13,0 |
| Operating weight | kg | 8.900 | 9.600 | 9.800 | 10.900 |

Product Advantages



A true construction machine

The very low pivot point guarantees optimum vision to the right and to the rear. The two lifting cylinders arranged on either side of the boom provide torsional rigidity under load and high release forces even with the maximum load capacities. The resulting favourable centre of gravity is a major contributor to the outstanding stability of the machines under load. A true construction machine for applications in agriculture.



Sophisticated design

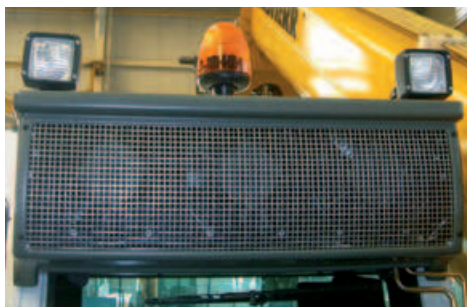
The frame is of robust, torsionally rigid box girder construction, sealed on top with metal plates. The heavy duty tool attachment is designed for bucket operations and compatible for use with the mid-range series of Liebherr wheel loader systems. The braided cable wear protection sleeving is fitted inside the boom, along with the hoses and cylinders, for ultimate protection against damage.



Ease of operation

All functions of the driving and working hydraulics can be conveniently controlled with the Liebherr multifunction joystick. For improved safety and comfort, one hand remains on the steering wheel and the other on the joystick. The hydrostatic wheel drive with stepless speed control enables the travel speed to be controlled without gear changes. The operator can choose between powerful and gentle acceleration with the press of a button. The fine control function permits precise working by separate reduction of the drive and working hydraulics.

Optional Equipment



Air conditioning

The high-performance air conditioning system maintains the most comfortable conditions in the operator cab.



Central lubrication system

The central lubrication system with clear-view reservoir has been designed for optimum integration in the telescopic handlers, from the number of lubrication points to the metered lubricant dispensing system and electronic control.



Scraper brushes and telescope wax

Scraper brushes prevent dirt from getting into the boom. Telescope wax stops particles from adhering to the machinery. This prolongs the service life of sliding parts. Daily lubrication is no longer necessary.

Autopower function - Electronic engine power control of the working hydraulics

The unique Autopower function controls the speed of the diesel engine and thus also the speed of the working hydraulics according to joystick deflection – making fuel-saving driving possible throughout the day. Fast working hydraulics and finely controlled driving power without use of the inching pedal are available only on telescopic handlers by Liebherr!



Trailer towing device

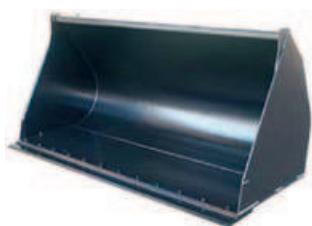
Particularly in agriculture, a telescopic handler must be capable of towing trailed equipment. These jobs can be carried out efficiently and reliably with the self-propelled trailer towing device, available as an option.

Hydraulic connections on the rear of the machine

The powerful hydraulic system can be extended to the rear and enables operation of a trailer with tipping function for example.

Great selection of add-on equipment and tire variants

Besides buckets with a holding capacity of 1 m³ to 4 m³ and forks of various widths and lengths, a wide range of useful add-on equipment, such as load hooks or bale clamps, is also available to the user. Choose from a wide variety of radial and cross-ply tires, with widths up to 600 mm, depending on the intended use of the machine and the ground conditions where it will be used.



Bucket

Capacity: 1,0 - 4,0 m³



Forklifts

Width: 1,200 - 2,000 mm
with or without load backrest guard



Wide tires

e.g. Mitas 600/40-22.5 TR-12



Printed in Austria by Arnold BK-RP LWT/VM 10813926-di-08.09_enGB

Subject to technical modifications.

Liebherr-Werk Telfs GmbH

Hans Liebherr-Straße 35, A-6410 Telfs

☎ +43 50809 6-100, Fax +43 50809 6-7772

www.liebherr.com, E-Mail: lwt.marketing@liebherr.com

Courtesy of Crane.Market