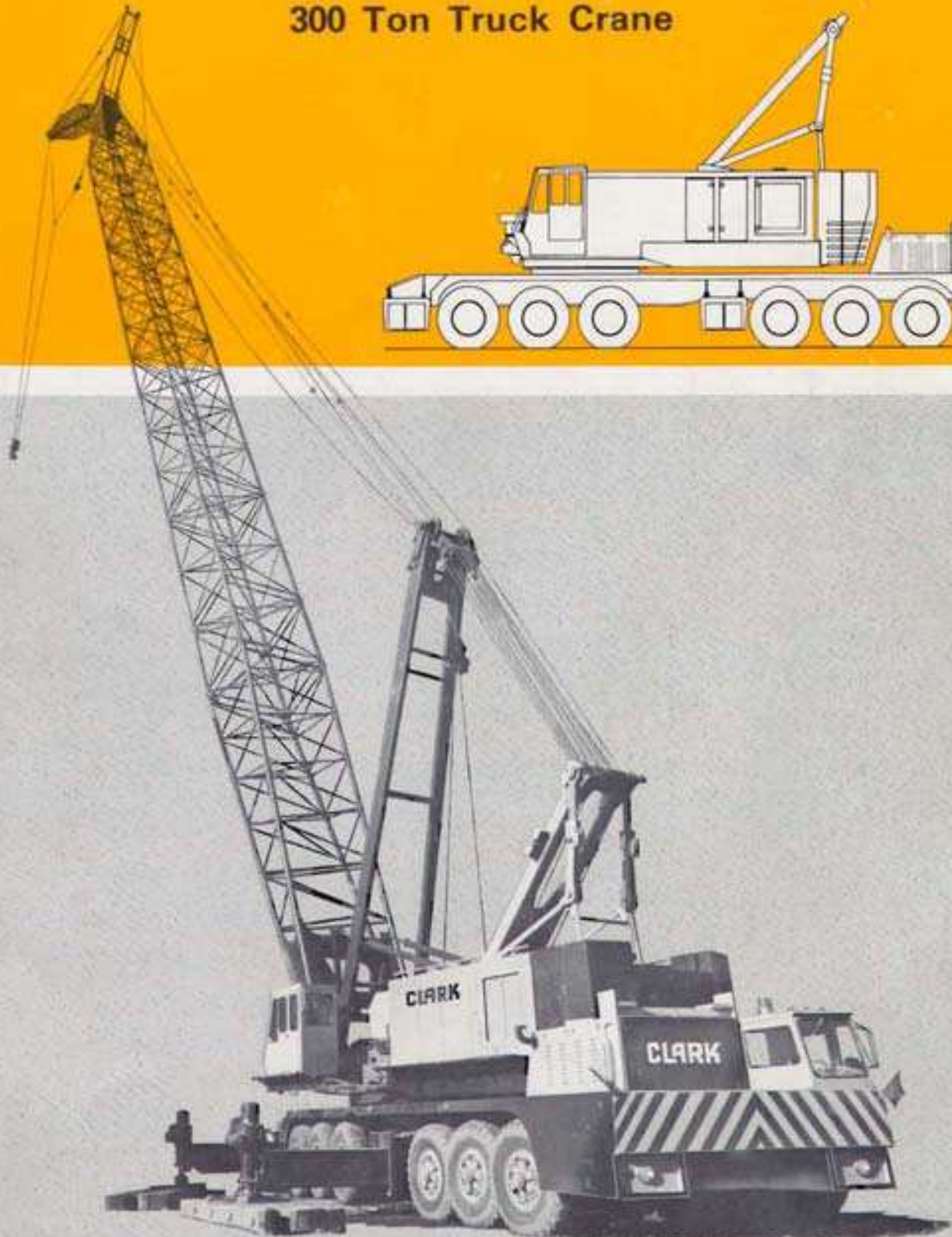
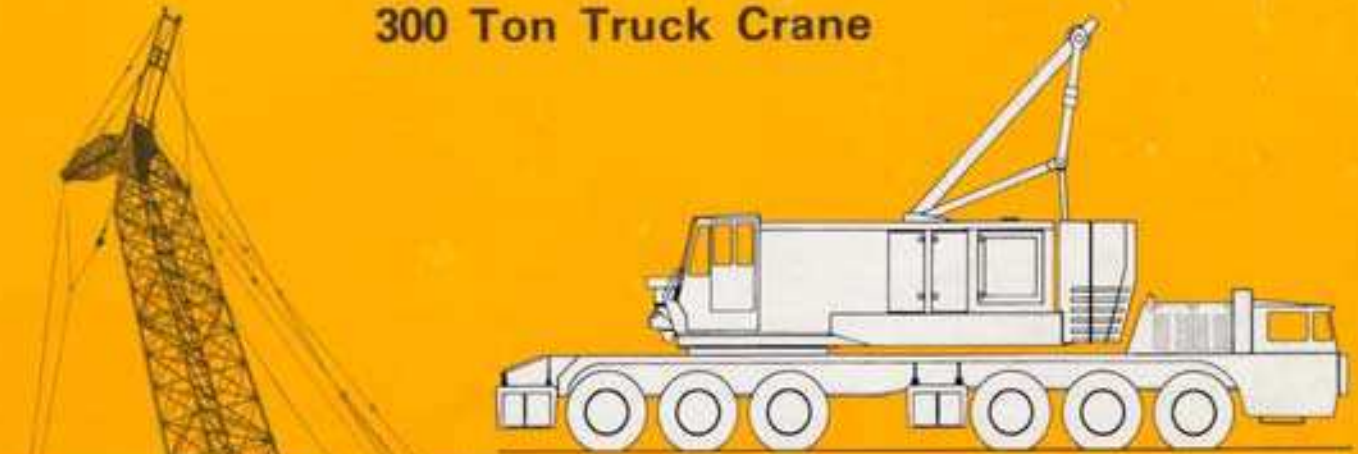


CLARK

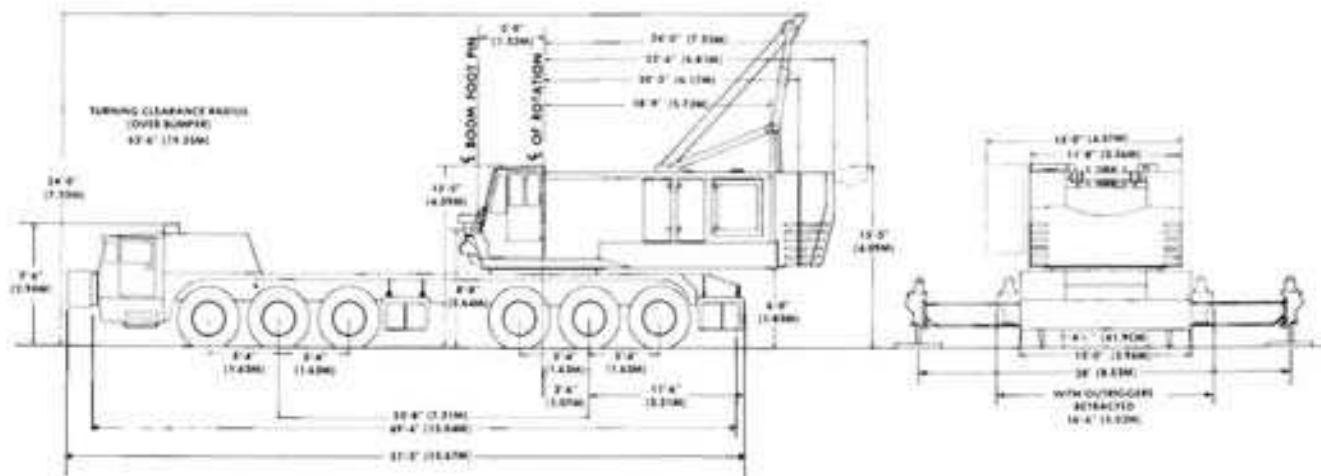
7700

Specifications

300 Ton Truck Crane

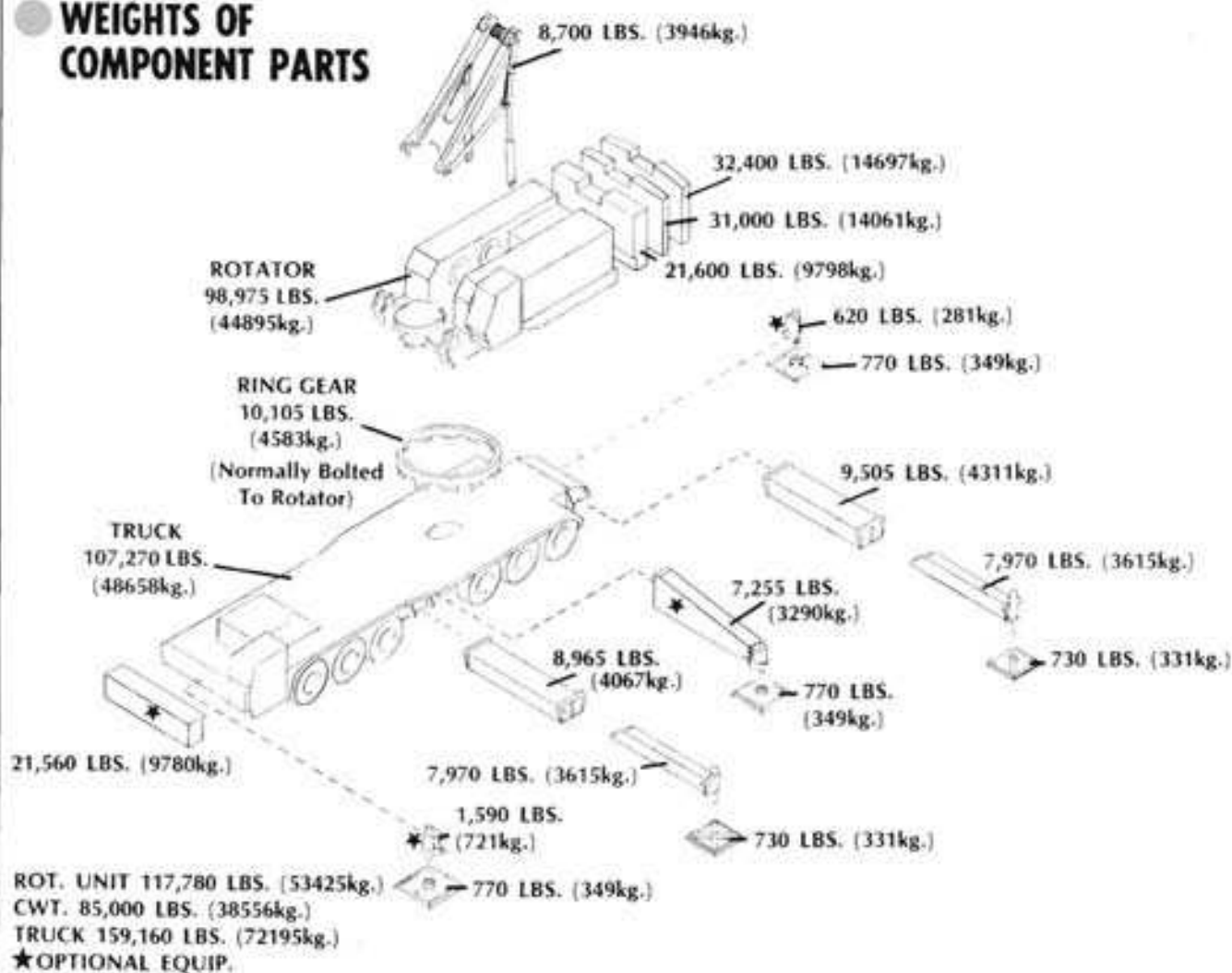


CLEARANCE & DIMENSIONS

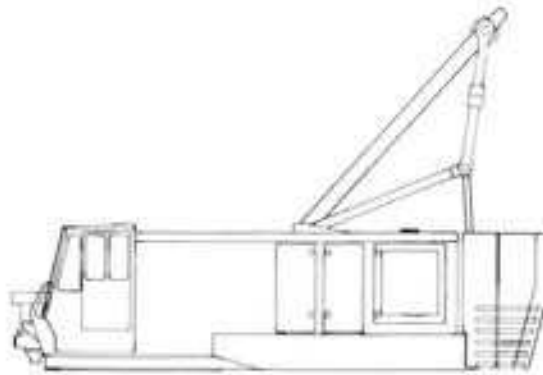


Relative position of the upper works, as shown, is for dimensioning purpose only, and is not recommended for use.

WEIGHTS OF COMPONENT PARTS



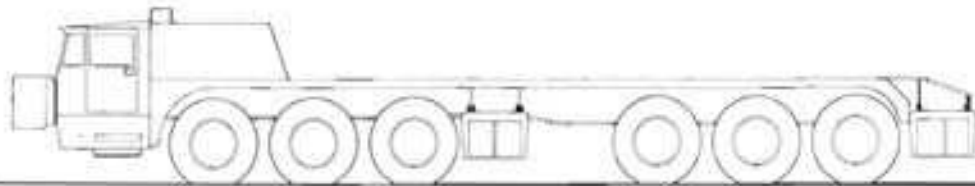
R-1



ROTATING ASSEMBLY

Equipment includes: Engine (See Item No. RO-100); independent fully hydraulic two drum boom hoist with infinite speed control and power controlled boom lowering; full hydraulic main hoist with infinite speed control in 2 ranges and power controlled lowering on all drums; multi position hydraulically controlled environmental pod; full hydraulic swing system; roller bearing swing circle; cab shutters; counterweight 85,000# (38 556kg); hydraulically controlled backhitch gantry; positive swing lock; running boards with handrails; signal horn; air and electric control equipment.

202,780 LBS. (91981kg)

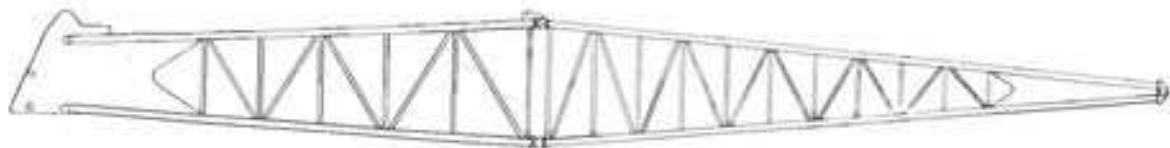


T-1

TRUCK MOUNTING

Equipment includes: LIMA truck with 12 x 6 drive; engine (See Item No. TO-35); 16'00" x 25" (40.6cm x 63.5cm) - 24 ply rating tires; 6 speed powershift transmission with electric controls, torque converter and hydraulic retarder; 3 planetary driving axles and inter-axle differential; 3 steering axles with power steering; pin on type outrigger boxes; hydraulic outriggers; air service brakes on all wheels; full width and length deck; fenders; flaps, mast rest; half cab, instruments; controls; directional signals; backup lights; west coast mirrors; and tools.

160,540 LBS. (72821kg)



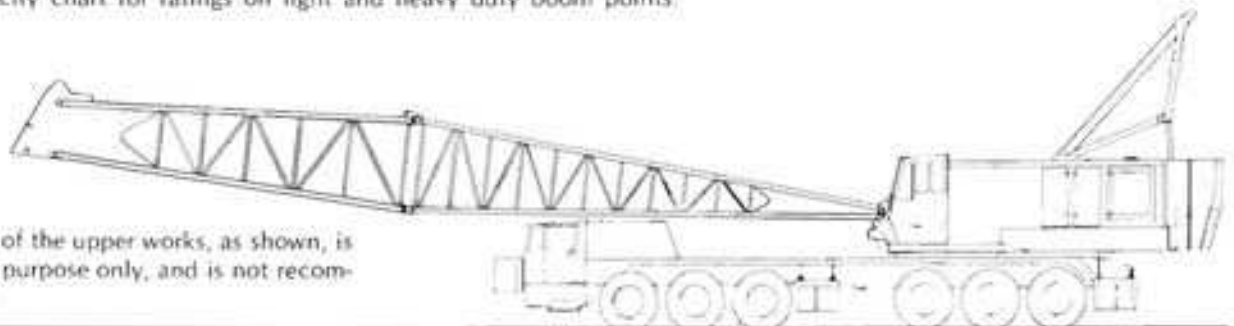
A-2

CRANE ATTACHMENT

Equipment includes: 70' (21.34M) pin connected tubular boom [90" (228.6cm) x 108" (274.3cm)] [40' (12.19M) base and 30' (9.14M) heavy duty point section] with 7 sheaves for 15 part reeving; rope guards, mast with 14 part boom hoist reeving; swaged type pendants for basic boom; 38" (96.52cm) front and 38" (96.52cm) rear hoist drums; and telescopic boomstops with electric over air shutoff

31,365 LBS. (14227kg)

Note: Maximum boom length with heavy duty point section, 250' (76.20M)
 Maximum boom length with light duty point section, 330' (100.58M)
 See capacity chart for ratings on light and heavy duty boom points.



Relative position of the upper works, as shown, is for dimensioning purpose only, and is not recommended for use.

TOTAL WEIGHT OF R-1, T-1 & A-2 = 394,685 LBS. (179 029Kg)

TOTAL WEIGHT OF R-1 & T-1 = 363,320 LBS. (164 802Kg)

● AXLE LOADING AND WEIGHTS

Complete Machine Equipped As Follows: Carrier, Outrigger Boxes, Outrigger Beams, Floats, Rotating Unit, Main Counterweight, and 70' (21.34M) Basic Boom.

| Weight Combinations | Boom Position | Front Bogie | Rear Bogie | Total Weight |
|---|---------------|-------------------------|--------------------------|--------------------------|
| Complete Machine | F | * | * | * |
| | R | 146,285 Lbs. (66355kg.) | 248,400 Lbs. (112674kg.) | 394,685 Lbs. (179029kg.) |
| Machine Less Main Counterweight | F | 90,895 Lbs. (41230kg.) | 218,790 Lbs. (99243kg.) | 309,685 Lbs. (140473kg.) |
| | R | 61,380 Lbs. (27842kg.) | 248,305 Lbs. (112631kg.) | 309,685 Lbs. (140473kg.) |
| Machine Less Main Counterweight, Boxes, Beams, and Floats | F | 86,670 Lbs. (39314kg.) | 169,745 Lbs. (76996kg.) | 256,415 Lbs. (116310kg.) |
| | R | 57,155 Lbs. (25926kg.) | 199,260 Lbs. (90384kg.) | 256,415 Lbs. (116310kg.) |
| Machine Less Main Counterweight, Boxes, Beams, Floats, and Boom Point Section | F | * | * | * |
| | R | 83,625 Lbs. (37932kg.) | 162,330 Lbs. (73633kg.) | 245,955 Lbs. (111565kg.) |
| Machine Less Main Counterweight, Boxes, Beams, Floats, and Complete Boom | F | * | * | * |
| | R | 101,960 Lbs. (46249kg.) | 123,090 Lbs. (55834kg.) | 225,050 Lbs. (102083kg.) |

F — Denotes Boom Extended Forward.

R — Denotes Boom Extended Rearward.

* — Do not travel with this combination and boom location.

Tire Pressure to be 95 P.S.I. (65.5 NPSCm)

For best results, the tire manufacturers recommend the following maximum speeds with the loading shown:

1 2.5 M.P.H. (4.02 KmPH); 2 10 M.P.H. (16.10 KmPH); 3 15 M.P.H. (24.14 KmPH) 4 20 M.P.H. (32.18 KmPH)

Complete Carrier Equipped As Follows: Carrier, Outrigger Boxes, Outriggers, and Floats:

| Weight Combinations | Front Bogie | Rear Bogie | Total |
|--|-------------------------|------------------------|-------------------------|
| Complete Carrier | 120,220 Lbs. (54532kg.) | 40,320 Lbs. (18289kg.) | 160,540 Lbs. (72821kg.) |
| Carrier Less Outriggers and Floats | 51,140 Lbs. (23197kg.) | 74,600 Lbs. (33839kg.) | 125,740 Lbs. (57036kg.) |
| Carrier Less Outriggers, Floats, and Outrigger Boxes | 49,855 Lbs. (22614kg.) | 57,415 Lbs. (26043kg.) | 107,270 Lbs. (48658kg.) |

Tire Pressure to be 70 P.S.I. (48.3 NPSCm)

The manufacturers recommend not over 50 miles (80.5 Km) be traveled in any 1½ hour period.

● POWER PLANT DATA (CARRIER)

| Make | Model | Fuel | Cyl. | Bore & Stroke | Net Horsepower |
|---------|---------|--------|------|---------------------------|-------------------|
| Cummins | KTA-600 | Diesel | 6 | 6¼" x 6¼" (159mm x 159mm) | 525 @ 2100 R.P.M. |

● PERFORMANCE DATA (CARRIER)

Bare Truck Travel Speed — 43 M.P.H. (69.19 KmPH) on 0% grade.

Fully equipped basic machine can travel up a 21% grade.

Basic machine less counterweight, outrigger boxes, beams, floats, and boom can travel up a 24% grade.

Turning radius — 59 ft. (18m) (curb radius).

Number of travel speeds — 18 forward and 3 reverse.

Tires — 16.00 x 25 (40.6cm x 63.5cm) [24 ply]

DESCRIPTIVE DATA (CARRIER)

Basic, Standard and Optional Components

FRAME: Carrier frame of heavy-duty, all welded construction. Two main members, each of deep box and I-beam section, are joined together by bumper and box section cross members. 100,000 P.S.I. (68944 N/cm²) steel is used in highly stressed members of Frame.

OUTRIGGER BOXES: The two outrigger boxes are fabricated from steel plates. Boxes are of the pin-on design for ease of removal, and are equipped with rollers for ease in rolling out outrigger beams.

OUTRIGGER BEAMS: Four box section extensible beams mounted two in each outrigger box are fabricated of alloy steel and equipped with hydraulic operated screw jacks and floats. Independent control valves for extending each beam and for lowering each hydraulic jack provide precise leveling of truck. Control valve station is portable for unobstructed viewing of jacks.

FRONT TRIDEM SUSPENSION: Front tridem axles are suspended by six alloy steel underslung equalizers, four of which are direct-connected to chassis frame. Two torque rods on each axle maintain proper positioning of axles.

FRONT AXLES: Three tubular-high clearance type. Wheels are mounted on roller bearings.

REAR AXLES: Three planetary rear drive axles, gear ration of 11.455:1. Mid-axle has interaxle differential with lockout.

REAR TRIDEM SUSPENSION: Rear tridem axles are suspended by six alloy steel underslung equalizers, four of which are direct-connected to chassis frame. One torque rod on each axle maintains proper positioning of axles.

WHEELS: Heavy-duty 11.25 x 25 (28.6 cm x 63.5 cm) STDND rims, six singles in front, six duals in rear, making a total of eighteen wheels.

TIRES: Eighteen 16.00 x 25 (40.6cm x 63.5cm) — 24 ply rating.

FUEL CAPACITY: 100 gallons (378 Liters).

FENDERS: Fenders are of the combination fender-deck design, providing a flat full width, full length walkway.

SERVICE BRAKES: Air brakes on all wheels. Front brake shoes are 20¼" (51.4cm) diameter x 5" (12.7cm) wide. Rear brake shoes are 20¼" (51.4cm) diameter x 7" (17.8cm) wide.

AUXILIARY BRAKES: Spring set, air released brake cylinders on rear axles lock brakes in case of air loss. Emergency release valve on dash allows some maneuvering after air loss. Auxiliary valve sets brakes for parking.

OPERATING BRAKE: A hand-operated air valve applies the service brakes when required for holding the machine when operating.

STEERING: Power assisted steering, with individual double acting cylinders on each front axle. The cylinders are powered by an engine driven hydraulic pump and metered by a control valve built into the draglink.

MAIN TRANSMISSION: Allison #5960 CLBT six speeds forward and one reverse. Transmission is equipped with TC 690 converter and hydraulic retarder.

AUXILIARY TRANSMISSION: Spicer P1241-C with 3 speeds giving the carrier 18 speeds forward and 3 reverse.

CAB: One-man type, with visor type top. All steel construction, amply ventilated for summer or winter. Adjustable seat. Instrument panel contains speedometer, odometer, ammeter, oil pressure gauge, water temperature gauge, fuel gauge and pilot lights, air gauge, converter oil temperature gauge, light switches, ignition and starter switch.

BUMPER COUNTERWEIGHT: One piece, required when using long boom or boom and jib combination. See "boom and jib data."

MISCELLANEOUS ACCESSORIES: Inflating hose and tire pressure gauge, mast rest, rear view mirrors, two beam headlights, stop and tail light, front, middle and rear marker lights and parking lights, electric directional signals, electric windshield wipers, electric dual horn, fender flaps, heater and defrosters.

● POWER PLANT DATA (ROTATOR)

| Make | Model | Fuel | Cyl. | Bore & Stroke | Net Horsepower |
|---------|-------------|--------|------|------------------------------|----------------|
| Cummins | NTA 855C420 | Diesel | 6 | 5½" x 6" (13.97cm x 15.24cm) | 420 @ 2300 |

● CLUTCH AND BRAKE DATA

| Function | CLUTCHES | | | | BRAKES | | | |
|-----------------|----------|------------------|------------------|---|--------|-----------------|-----------------|---|
| | Type | Width | Diameter | Area | Type | Width | Diameter | Area |
| Main Hoist | Band | 4½" (11.43cm) | 43" (109.2cm) | 518 In ² (3342cm ²) | Band | 6" (15.24cm) | 50" (127cm) | 748 In ² (4826cm ²) |
| Auxiliary Hoist | Band | 4½" (11.43cm) | 43" (109.2cm) | 518 In ² (3342cm ²) | Band | 6" (15.24cm) | 50" (127cm) | 748 In ² (4826cm ²) |
| Boom Hoist | Band | — | — | — | Band | 4" (101.6cm) | 15" (38.1cm) | 145 In ² (935cm ²) |
| Swing Brake | Band | — | — | — | Band | 4" (10.16cm) | 26" (66cm) | 258 In ² (1665cm ²) |
| Third Drum | Band | 4½" (11.43cm) | 43" (109.2cm) | 518 In ² (3342cm ²) | Band | 6" (15.24cm) | 50" (127cm) | 748 In ² (4826cm ²) |

● LAGGING DATA

| Lagging Location | Use | Drum P.D. | Drum Width | Type | Eff. Capy. 1st Layer | Maximum Capy. Layers | Wire Rope Size |
|------------------------------|-----------------------|-----------------|----------------------|---------|----------------------|-------------------------|--------------------|
| Boom Hoist Shaft | Boom Hoist | 15" (38.1cm) | 14-7/16" (36.7cm) | Grooved | 90' (27.4M) | 1002' (305.4M) in 7 | 1" (25.4mm) |
| Rear Hoist Shaft | Main Hoist | 24" (61cm) | 38" (96.5cm) | Grooved | 191' (58.2m) | 1,796' (547.4M) in 7 | 1-1/8" (28.6mm) |
| Right Hand Front Hoist Shaft | Auxiliary Hoist | 24" (61cm) | 17½" (44.5cm) | Grooved | 79' (24.1M) | 658' (200.6M) in 6 | 1-1/8" (28.6mm) |
| Left Hand Front Hoist Shaft | Third Drum | 24" (61cm) | 17½" (44.5cm) | Grooved | 79' (24.1M) | 658' (200.6M) in 6 | 1-1/8" (28.6mm) |
| Front Hoist Shaft | Full Width Front Drum | 24" (61cm) | 38" (96.5cm) | Grooved | 191' (58.2M) | 1,796' (547.4M) in 7 | 1-1/8" (28.6mm) |

● MISCELLANEOUS DATA (ROTATOR)

| | |
|---------------|----------------------|
| Swing Speed | 2.1 R.P.M. |
| Fuel Capacity | 200 Ga. (757 Liters) |

DESCRIPTIVE DATA (ROTATING ASSEMBLY)

Basic, Standard and Optional Components

ROTATING BASE: Fabricated with integral machine frames using alloy steel for strong, lightweight construction. Separate fuel tank.

SHAFTING: All shafting made from heat treated alloy steel. Involute splines used extensively.

SWING: Separate gear box provides power for swing. This assembly easily removed for service. Driven by hydraulic motor controlled by special fine-metering valve for precise swing control. Vertical swing shaft and pinion is one piece forging. Gearing runs in oil.

SWING BRAKE: A band brake at top of swing assembly is spring set, air release controllable by the operator. Also a swing snub operates this band brake for momentarily holding while setting loads.

SWING LOCK: A pawl engages in slots at the bottom of the swing brake housing and can be used as a upper unit parking lock.

FRONT DRUM SHAFT: Supported by self-aligning anti-friction bearings. Can have either two drums or a full width single drum. All drums are mounted on anti-friction bearings.

REAR DRUM SHAFT: Supported by self-aligning anti-friction bearings. A full width single-drum for maximum rope capacity is mounted on anti-friction bearings.

HOIST CLUTCHES: Air actuated — internal expanding friction band type.

HOIST BRAKES: External contracting friction band type. Spring set — air release parking feature with an air actuated, foot pedal applied, operating brake. Separate brakes for each drum.

HOIST DRUM RATCHET: Each drum has a spring set, air release ratchet that's controllable by the operator.

HOIST POWER: Full hydraulic — hydraulic motor powers a selectable transmission to give two speed ranges, which in turn, thru a gear train, powers both front and rear drum shafts. The hydraulic motor is controlled by varying the flow of oil from the hoist pump which give infinite speed control in both raising and lowering directions. This provides Power Load Lowering on all drums with the same speed and precision as raising a load. Gearing runs in oil.

BOOM HOIST: Is a self-contained unit that pins to the rotating base. Two hydraulic motors, through a gear reduction, drive two drums keyed to a common shaft. Two external contracting friction band brakes are spring set — air release type that release automatically when powering up or down and set automatically when boom hoisting operation stops. The hydraulic motors are controlled by varying the flow from the boom hoist pump. This gives infinite speed control both raising and lowering the boom.

BOOM HOIST RATCHET: Ratchet on the drum shaft is spring set — air release and controllable by the operator.

BOOMS AND JIBS: Extensible type with tubular T1 chords — refer to boom and jib data.

BOOM STOP: Telescopic with automatic air cut-off of boom hoisting power. Stops are attached to the boom base or to the mast when using it as a boom.

BOOM SUSPENSION: 14-part line from gantry to mast. Slings from mast to boom point with mid-point suspension when boom length dictates.

COUNTERWEIGHT: Three piece — cast iron hooked on at rear of rotating frame. Readily removable for weight reduction.

COUNTERWEIGHT REMOVAL EQUIPMENT: Using links and gantry hydraulic cylinders, the counterweights can be removed or added in two sections rapidly and smoothly.

GANTRY: Back hitch type with the rear legs made up of two hydraulic cylinders and telescopic sections. Can be pinned up at maximum height for working and pinned down at cab height for traveling.

MACHINERY CAB: Steel construction with doors and hatches conveniently located for easy service of engine and machinery. All doors can be latched open or closed. Louvers are adjustable to provide proper heating or cooling to engine and hydraulic components.

OPERATOR'S POD: Swings in for shipping — nothing has to be disconnected or removed — and swings out for working. Hydraulically controlled from operator's seat or from ground. All steel construction, full 360° vision with rubber-set windows. Front and right hand windows can be opened. Can be heated, air conditioned, and is sound conditioned for operator's comfort.

SWING CIRCLE: Upper rotating unit mounts on a roller bearing swing circle that has internal cut teeth which mate with the swing pinion. Circulating oil lubricates the gear teeth. The inner half of the swing circle mounts to the truck by extended tangs that fit into slots in the truck. Adjustable wedges lock these tangs in place, affording easy and rapid removal of the upper from the truck.

GEARING: Note — All gears are fully enclosed and run in oil.

POWER TAKE-OFF: Engine driven pump drive gear box that has a master clutch disconnect. Each function, swing, boom hoist, hoist, and propel (for crawler version) has a separate pump for independent control.

HYDRAULIC SYSTEM: Steel tubing and hose connect the pumps and motors. The tank is equipped with filters, strainers, and level indicator. An oil cooler is mounted in front of the engine radiator.

OPTIONAL INDEPENDENT DRIVE FRONT DRUM: This has a separate hydraulic pump and motor to power the front drum with all the control features of the rear drum power. This offers more versatility to the hoisting function.

MAXIMUM BOOM OR BOOM PLUS JIB THAT CAN BE HANDLED HORIZONTALLY

| OVER REAR ON STANDARD AND REAR AUXILIARY OUTRIGGERS | | OVER SIDE ON STANDARD OUTRIGGERS | |
|---|-------------------------------|----------------------------------|-------------------------------|
| Less Bumper Counterweight | With Bumper Counterweight | Less Bumper Counterweight | With Bumper Counterweight |
| 330' (100.58M) | 330' (100.58M) | 300' (91.44M) | 310' (94.49M) |
| 310' (94.49M) + 40' (12.19M) | 330' (100.58M) + 40' (12.19M) | 270' (82.30M) + 40' (12.19M) | 270' (82.30M) + 40' (12.19M) |
| 300' (91.44M) + 50' (15.24M) | 330' (100.58M) + 50' (15.24M) | 240' (73.15M) + 50' (15.24M) | 240' (73.15M) + 50' (15.24M) |
| 290' (88.39M) + 60' (18.29M) | 320' (97.54M) + 60' (18.29M) | 240' (73.15M) + 60' (18.29M) | 240' (73.15M) + 60' (18.29M) |
| 290' (88.39M) + 70' (21.34M) | 320' (97.54M) + 70' (21.34M) | 240' (73.15M) + 70' (21.34M) | 240' (73.15M) + 70' (21.34M) |
| 290' (88.39M) + 80' (24.38M) | 310' (94.49M) + 80' (24.38M) | 230' (70.10M) + 80' (24.38M) | 230' (70.10M) + 80' (24.38M) |
| 280' (85.34M) + 90' (27.43M) | 310' (94.49M) + 90' (27.43M) | 230' (70.10M) + 90' (27.43M) | 230' (70.10M) + 90' (27.43M) |
| 280' (85.34M) + 100' (30.48M) | 310' (94.49M) + 100' (30.48M) | 220' (67.06M) + 100' (30.48M) | 220' (67.06M) + 100' (30.48M) |

| OVER REAR ON STANDARD OUTRIGGERS | | OVER SIDE WITH AUXILIARY AND STANDARD OUTRIGGERS |
|----------------------------------|-------------------------------|--|
| Less Bumper Counterweight | With Bumper Counterweight | With Bumper Counterweight |
| 330' (100.58M) | 330' (100.58M) | 320' (97.54M) |
| 280' (85.34M) + 40' (12.19M) | 310' (94.49M) + 40' (12.19M) | 280' (85.34M) + 40' (12.19M) |
| 270' (82.30M) + 50' (15.24M) | 300' (91.44M) + 50' (15.24M) | 280' (85.34M) + 50' (15.24M) |
| 270' (82.30M) + 60' (18.29M) | 300' (91.44M) + 60' (18.29M) | 270' (82.30M) + 60' (18.29M) |
| 270' (82.30M) + 70' (21.34M) | 290' (88.39M) + 70' (21.34M) | 270' (82.30M) + 70' (21.34M) |
| 240' (73.15M) + 80' (24.38M) | 290' (88.39M) + 80' (24.38M) | 270' (82.30M) + 80' (24.38M) |
| 240' (73.15M) + 90' (27.43M) | 280' (85.34M) + 90' (27.43M) | 250' (76.20M) + 90' (27.43M) |
| 240' (73.15M) + 100' (30.48M) | 280' (85.34M) + 100' (30.48M) | 240' (73.15M) + 100' (30.48M) |

BOOM DATA

| Component | Light Duty Boom | Heavy Duty Boom |
|---|---------------------------|---------------------------|
| Point Shaft | 1,100 Lbs. (499kg) | 2,600 Lbs. (1179kg.) |
| 30' (13.61M) Point Section | 5,160 Lbs. (2341kg.) | 6,890 Lbs. (3125kg.) |
| 40' (12.19M) | 7,725 Lbs. (3504kg.) | 7,725 Lbs. (3504kg.) |
| Basic Pendants Base Section | 800 Lbs. (363kg.) | 970 Lbs. (440kg.) |
| 10' (3.05M) Extension With Pendants | 1,825 Lbs. (828kg.) | 1,895 Lbs. (860kg.) |
| 20' (6.10M) Extension With Pendants | 2,900 Lbs. (1315kg.) | 2,975 Lbs. (1349kg.) |
| 40' (12.19M) Extension With Pendants | 4,995 Lbs. (2266kg.) | 5,095 Lbs. (2311kg.) |
| 40' (12.19M) Mast | 8,275 Lbs. (3754kg.) | 8,275 Lbs. (3754kg.) |
| Boom Stop | 1,365 Lbs. (619kg.) | 1,365 Lbs. (619kg.) |
| Midpoint Suspension 170' (51.82M) Boom to 230' (70.10M) Boom | 1,050 Lbs. (476kg.) | 1,050 Lbs. (476kg.) |
| Midpoint Suspension 240' (73.15M) Boom to 260' (79.25M) Boom | 1,190 Lbs. (540kg.) | 1,190 Lbs. (540kg.) |
| Midpoint Suspension 270' (82.30M) Boom and 330' (100.58M) Boom | 1,420 Lbs. (644kg.) | 1,420 Lbs. (644kg.) |
| Boom Hoist Wire Rope | 2,460 Lbs. (1116kg.) | 2,460 Lbs. (1116kg.) |
| Main Hoist Wire Rope | 3,750 Lbs. (1702kg.) | 3,750 Lbs. (1702kg.) |
| Auxiliary Hoist Wire Rope | 2.46 Lbs./Ft. (3.66kg./M) | 2.46 Lbs./Ft. (3.66kg./M) |
| 300 Ton Hookblock | 5,400 Lbs. (2449kg.) | 5,400 Lbs. (2449kg.) |
| 40 Ton Hookblock | 1,100 Lbs. (499kg.) | 1,100 Lbs. (499kg.) |
| 20 Ton Ball and Hook | 800 Lbs. (363kg.) | 800 Lbs. (363kg.) |

Boom Make-up: The first 70' (21.34M) of boom extensions adjacent to the boom base must be 6" (152mm) O.D. tubing; all remaining extensions should be 5 1/4" (146mm) O.D. tube. The heavy duty boom point section with heavy duty point shaft is to be installed on booms 70' (21.34M) thru 250' (76.20M); the light duty boom point with light duty point shaft is to be installed on booms 260' (79.25M) thru 330' (100.58M).

JIB DATA

| Component | Heavy Duty jib |
|------------------------------------|----------------------|
| Basic Jib Length | 40' (12.19M) |
| Maximum Length | 100' (30.48M) |
| Basic jib | 5,040 Lbs. (2286kg.) |
| 10' (3.05M) Extension With Pendant | 660 Lbs. (299kg.) |
| 20' (6.10M) Extension with Pendant | 1,005 Lbs. (456kg.) |

BOOM AND JIB DATA

| JIB | |
|------------------------|---|
| Basic Length | 40' (12.19M) |
| Max. Length | 100' (30.48M) |
| Section | 46" x 52" (1.7M x 1.32M) |
| Chord Size | 2 1/2" (6.35cm) O.D. Tube |
| Chord Material | 100,000 P.S.I. (68944 N/cm ²) |
| Quan. Sheaves at Point | One (1) |
| P.D. Point Sheave | 21-3/8" (54.3cm) P.D. |
| Capacity | |
| 40' (12.19M) | 40 Tons (36.3 Tons) |
| 50' (15.24M) | 31 1/2 Tons (28.6 Tons) |
| 60' (18.29M) | 24 Tons (21.8 Tons) |
| 70' (21.34M) | 20 Tons (18.1 Tons) |
| 80' (24.38M) | 18 Tons (16.3 Tons) |
| 90' (27.43M) | 15 1/2 Tons (14.1 Tons) |
| 100' (30.48M) | 13 1/2 Tons (12.2 Tons) |

| BOOM, TUBULAR PIN CONNECTED | |
|------------------------------|---|
| Type Service | Crane |
| Suspension | Mast and Pendants |
| Gantry | High Back Hitch |
| Mast | 40' (12.19M) |
| Quan. Sheaves at Point Shaft | Light Duty Point 3 |
| | Heavy Duty Point 7 |
| Dia. Point Sheaves | 21-3/8" (54.3cm) P.D. — 1-1/8" (29mm) Dia. Wire Rope |
| Basic Boom Length | 70' (21.34M) |
| Chord Material | 100,000 P.S.I. (68944 N/cm ²) Steel |
| Extensions | 10', 20', and 40' Straight (3.05M, 6.10M, and 12.19M) |
| Section | 90" x 108" (2.29M x 2.74M) |
| Max. Boom Length | 330' (100.58M) |
| Chord Dimensions | Light Duty 5-3/4" O.D. (146mm) Tube |
| | Heavy Duty 6" O.D. (152mm) Tube |

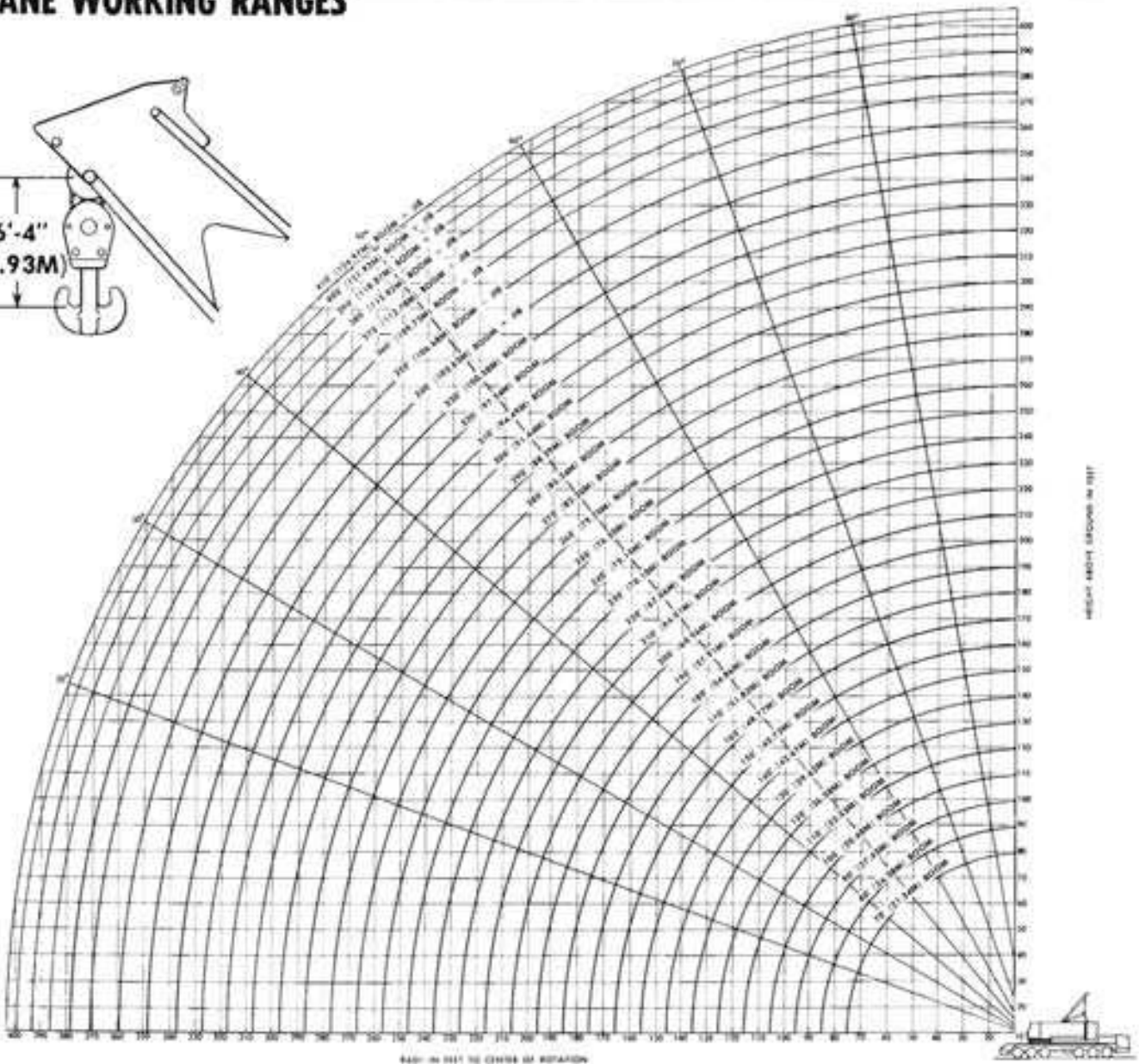
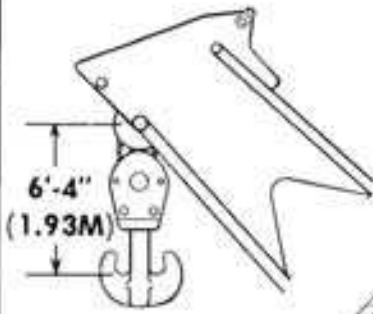
HOIST LINE DATA

| Typical Hoist Performance Both Front & Rear Hoist Shafts | | |
|---|---------------------------|------------------------------|
| Speed Range | Line Pull | Line Speed |
| 1st | 40,000 Lbs. (18144kg.) | 180 F.P.M. (54.86M.P.M.) |
| 2nd | 20,000 Lbs. (9072kg.) | 350 F.P.M. (106.68M.P.M.) |

| Optional Independent Front Drive Hoist Typical Hoist Performance Front Hoist Only | |
|--|------------------------------|
| Line Pull | Line Speed |
| 25,000 Lbs. (11340kg.) | 185 F.P.M. (56.39 M.P.M.) |



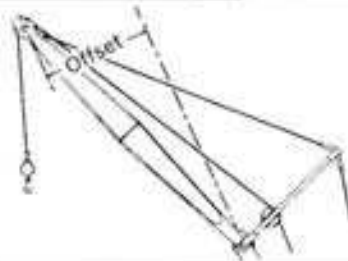
CRANE WORKING RANGES



WIRE ROPE REEVING FOR HOOK BLOCKS

| Parts of Line Rope Load | Parts of Line Required |
|-------------------------------|---------------------------|
| To 40,000 Lbs. (18144kg.) | 1 |
| Over 40,000 Lbs. (18144kg.) | 2 |
| Over 80,000 Lbs. (36288kg.) | 3 |
| Over 120,000 Lbs. (54432kg.) | 4 |
| Over 160,000 Lbs. (72576kg.) | 5 |
| Over 200,000 Lbs. (90720kg.) | 6 |
| Over 240,000 Lbs. (108864kg.) | 7 |
| Over 280,000 Lbs. (127008kg.) | 8 |
| Over 320,000 Lbs. (145152kg.) | 9 |
| Over 360,000 Lbs. (163296kg.) | 10 |
| Over 400,000 Lbs. (181440kg.) | 11 |
| Over 440,000 Lbs. (199584kg.) | 12 |
| Over 480,000 Lbs. (217728kg.) | 13 |
| Over 520,000 Lbs. (235872kg.) | 14 |
| Over 560,000 Lbs. (254016kg.) | 15 |

Required 1-1/8" (29mm) Dia. Wire Rope Having a minimum breaking strength of 143,000 lbs. (64865kg.)



JIB DATA

| Jib Length | Rating | Offset | Effective Weight |
|---------------|----------------------|------------------|-----------------------|
| 40' (12.19M) | 40 Tons (36.3 Tons) | 13'-6" (4.11M) | 4,600 Lbs. (2087kg.) |
| 50' (15.24M) | 31½ Tons (28.5 Tons) | 17'-4" (5.28M) | 5,450 Lbs. (2472kg.) |
| 60' (18.29M) | 24 Tons (21.8 Tons) | 20'-7" (6.27M) | 6,350 Lbs. (2880kg.) |
| 70' (21.34M) | 20 Tons (18.1 Tons) | 24'-7" (7.49M) | 6,975 Lbs. (3164kg.) |
| 80' (24.38M) | 18 Tons (16.3 Tons) | 26'-10" (8.18M) | 8,025 Lbs. (3640kg.) |
| 90' (27.43M) | 15½ Tons (14.1 Tons) | 31'-10" (9.70M) | 8,775 Lbs. (3980kg.) |
| 100' (30.48M) | 13½ Tons (12.2 Tons) | 33'- 3" (10.13M) | 10,000 Lbs. (4536kg.) |

Jib capacities are approximately the same as Boom Capacities at any given radius, but not to exceed the rating listed. Effective jib weight to be subtracted from Boom capacity chart if load is raised on Boom point when jib is assembled on Boom.

CRANE LIFTING CAPACITIES

Lite Duty

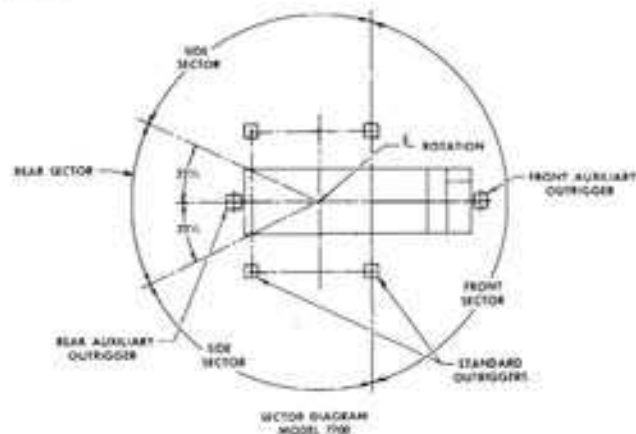
| TUBULAR BOOM 100 TON CLASS M-2450 | | | | | | | | | | CRANE CAPACITY CHART OVER SIDE AND OVER REAR ON STANDARD OUTRIGGERS | | | | | | | | | |
|--------------------------------------|----|------|-------|----------|------|-----|------|-------|----------|---|-----|------|-------|----------|------|-----|------|-------|----------|
| Boom | | | | Capacity | Boom | | | | Capacity | Boom | | | | Capacity | Boom | | | | Capacity |
| L | R | A | H | | L | R | A | H | | L | R | A | H | | L | R | A | H | |
| 70 | 30 | 81.0 | 77.1 | 1600,000 | 750 | 35 | 79.2 | 155.0 | 299,800 | 210 | 45 | 79.6 | 214.8 | 201,600 | 260 | 60 | 78.1 | 261.9 | 129,000 |
| | 20 | 79.4 | 77.1 | 1517,700 | | 40 | 77.3 | 154.3 | 244,200 | | 50 | 78.2 | 213.8 | 171,900 | | 70 | 75.9 | 260.4 | 101,000 |
| | 25 | 75.1 | 76.8 | 1480,200 | | 45 | 73.3 | 151.2 | 202,200 | | 60 | 75.4 | 211.2 | 129,900 | | 80 | 73.6 | 257.6 | 81,100 |
| | 30 | 70.8 | 74.7 | 1391,000 | | 50 | 71.3 | 151.8 | 171,900 | | 70 | 72.3 | 206.4 | 103,000 | | 90 | 71.1 | 254.4 | 69,200 |
| | 35 | 66.4 | 71.9 | 107,000 | | 60 | 69.1 | 148.2 | 111,000 | | 80 | 69.6 | 204.8 | 64,200 | | 100 | 69.0 | 250.7 | 58,500 |
| | 40 | 63.7 | 69.3 | 245,000 | | 70 | 65.1 | 143.8 | 104,800 | | 90 | 66.7 | 200.7 | 70,400 | | 120 | 66.6 | 246.5 | 50,000 |
| | 45 | 56.9 | 66.7 | 203,000 | | 80 | 60.8 | 138.5 | 86,200 | | 100 | 61.7 | 196.0 | 59,700 | | 150 | 64.2 | 241.9 | 41,100 |
| | 50 | 51.7 | 67.3 | 172,700 | | 90 | 56.1 | 132.7 | 72,500 | | 120 | 60.5 | 190.3 | 53,300 | | 180 | 61.7 | 236.6 | 37,400 |
| | 60 | 40.0 | 52.0 | 131,800 | | 100 | 51.5 | 124.7 | 62,000 | | 150 | 57.3 | 184.4 | 44,800 | | 240 | 59.1 | 230.9 | 32,700 |
| | 70 | 23.6 | 34.7 | 105,600 | | 120 | 46.4 | 115.8 | 53,700 | | 200 | 54.0 | 177.4 | 38,900 | | 300 | 56.5 | 224.3 | 28,600 |
| 80 | 25 | 77.0 | 86.1 | 1480,500 | 750 | 120 | 43.7 | 105.0 | 46,900 | 210 | 140 | 70.5 | 169.1 | 16,500 | 260 | 120 | 64.2 | 241.9 | 41,100 |
| | 30 | 73.3 | 84.7 | 1390,900 | | 130 | 41.3 | 91.6 | 43,400 | | 150 | 65.9 | 160.9 | 30,100 | | 130 | 61.7 | 236.6 | 37,400 |
| | 35 | 69.5 | 82.9 | 1306,900 | | 140 | 39.8 | 74.0 | 36,700 | | 160 | 63.0 | 150.4 | 26,600 | | 150 | 58.8 | 237.4 | 25,300 |
| | 40 | 65.6 | 80.6 | 1244,900 | | 150 | 35.6 | 47.1 | 32,600 | | 170 | 60.8 | 138.6 | 23,500 | | 170 | 51.0 | 209.6 | 22,600 |
| | 45 | 63.5 | 78.0 | 102,900 | | 160 | 34.1 | 64.8 | 28,200 | | 180 | 58.1 | 124.8 | 20,500 | | 200 | 41.8 | 180.6 | 14,800 |
| | 50 | 57.3 | 74.8 | 122,600 | | 170 | 31.9 | 96.8 | 24,100 | | 190 | 55.8 | 96.1 | 18,500 | | 210 | 38.4 | 165.6 | 12,600 |
| | 60 | 48.1 | 66.8 | 121,700 | | 180 | 28.1 | 86.8 | 16,400 | | 200 | 32.1 | 86.8 | 16,400 | | 230 | 34.5 | 154.9 | 11,100 |
| | 70 | 37.2 | 53.1 | 105,500 | | 190 | 24.4 | 74.0 | 12,600 | | 210 | 27.3 | 74.0 | 12,600 | | 240 | 30.3 | 139.0 | 9,300 |
| | 80 | 21.9 | 36.6 | 87,300 | | 200 | 20.6 | 62.2 | 11,800 | | 230 | 25.7 | 119.9 | 7,300 | | 240 | 25.0 | 119.9 | 7,300 |
| | 90 | 15.1 | 46.8 | 73,600 | | 210 | 17.9 | 50.6 | 10,900 | | 240 | 20.4 | 95.7 | 5,700 | | 260 | 17.7 | 79.4 | 4,600 |
| 90 | 25 | 78.5 | 96.4 | 1479,400 | 750 | 120 | 43.7 | 105.0 | 46,900 | 210 | 140 | 70.5 | 169.1 | 16,500 | 260 | 120 | 64.2 | 241.9 | 41,100 |
| | 30 | 75.2 | 95.1 | 1390,800 | | 130 | 41.3 | 91.6 | 43,400 | | 150 | 65.9 | 160.9 | 30,100 | | 130 | 61.7 | 236.6 | 37,400 |
| | 35 | 71.9 | 93.5 | 1306,800 | | 140 | 39.8 | 74.0 | 36,700 | | 160 | 63.0 | 150.4 | 26,600 | | 150 | 58.8 | 237.4 | 25,300 |
| | 40 | 68.5 | 91.6 | 1244,800 | | 150 | 35.6 | 47.1 | 32,600 | | 170 | 60.8 | 138.6 | 23,500 | | 170 | 51.0 | 209.6 | 22,600 |
| | 45 | 65.0 | 89.1 | 102,800 | | 160 | 34.1 | 64.8 | 28,200 | | 180 | 58.1 | 124.8 | 20,500 | | 200 | 41.8 | 180.6 | 14,800 |
| | 50 | 61.3 | 86.6 | 121,500 | | 170 | 31.9 | 96.8 | 24,100 | | 190 | 55.8 | 96.1 | 18,500 | | 210 | 38.4 | 165.6 | 12,600 |
| | 60 | 51.7 | 79.9 | 121,600 | | 180 | 28.1 | 86.8 | 16,400 | | 200 | 32.1 | 86.8 | 16,400 | | 230 | 34.5 | 154.9 | 11,100 |
| | 70 | 45.1 | 70.9 | 105,400 | | 190 | 24.4 | 74.0 | 12,600 | | 210 | 27.3 | 74.0 | 12,600 | | 240 | 30.3 | 139.0 | 9,300 |
| | 80 | 34.9 | 58.3 | 87,300 | | 200 | 20.6 | 62.2 | 11,800 | | 230 | 25.7 | 119.9 | 7,300 | | 240 | 25.0 | 119.9 | 7,300 |
| | 90 | 20.6 | 46.3 | 73,600 | | 210 | 17.9 | 50.6 | 10,900 | | 240 | 20.4 | 95.7 | 5,700 | | 260 | 17.7 | 79.4 | 4,600 |
| 100 | 25 | 79.7 | 106.7 | 1479,300 | 750 | 120 | 43.7 | 105.0 | 46,900 | 210 | 140 | 70.5 | 169.1 | 16,500 | 260 | 120 | 64.2 | 241.9 | 41,100 |
| | 30 | 76.7 | 105.1 | 1390,700 | | 130 | 41.3 | 91.6 | 43,400 | | 150 | 65.9 | 160.9 | 30,100 | | 130 | 61.7 | 236.6 | 37,400 |
| | 35 | 73.7 | 104.1 | 1306,700 | | 140 | 39.8 | 74.0 | 36,700 | | 160 | 63.0 | 150.4 | 26,600 | | 150 | 58.8 | 237.4 | 25,300 |
| | 40 | 70.7 | 102.4 | 1244,700 | | 150 | 35.6 | 47.1 | 32,600 | | 170 | 60.8 | 138.6 | 23,500 | | 170 | 51.0 | 209.6 | 22,600 |
| | 45 | 67.4 | 100.7 | 102,700 | | 160 | 34.1 | 64.8 | 28,200 | | 180 | 58.1 | 124.8 | 20,500 | | 200 | 41.8 | 180.6 | 14,800 |
| | 50 | 64.5 | 98.0 | 121,400 | | 170 | 31.9 | 96.8 | 24,100 | | 190 | 55.8 | 96.1 | 18,500 | | 210 | 38.4 | 165.6 | 12,600 |
| | 60 | 57.8 | 92.2 | 121,500 | | 180 | 28.1 | 86.8 | 16,400 | | 200 | 32.1 | 86.8 | 16,400 | | 230 | 34.5 | 154.9 | 11,100 |
| | 70 | 50.7 | 84.7 | 105,300 | | 190 | 24.4 | 74.0 | 12,600 | | 210 | 27.3 | 74.0 | 12,600 | | 240 | 30.3 | 139.0 | 9,300 |
| | 80 | 42.6 | 74.8 | 87,600 | | 200 | 20.6 | 62.2 | 11,800 | | 230 | 25.7 | 119.9 | 7,300 | | 240 | 25.0 | 119.9 | 7,300 |
| | 90 | 31.0 | 61.4 | 71,500 | | 210 | 17.9 | 50.6 | 10,900 | | 240 | 20.4 | 95.7 | 5,700 | | 260 | 17.7 | 79.4 | 4,600 |
| 110 | 25 | 77.9 | 115.8 | 1390,600 | 750 | 120 | 43.7 | 105.0 | 46,900 | 210 | 140 | 70.5 | 169.1 | 16,500 | 260 | 120 | 64.2 | 241.9 | 41,100 |
| | 30 | 75.3 | 114.5 | 1306,600 | | 130 | 41.3 | 91.6 | 43,400 | | 150 | 65.9 | 160.9 | 30,100 | | 130 | 61.7 | 236.6 | 37,400 |
| | 35 | 72.5 | 112.9 | 1244,600 | | 140 | 39.8 | 74.0 | 36,700 | | 160 | 63.0 | 150.4 | 26,600 | | 150 | 58.8 | 237.4 | 25,300 |
| | 40 | 72.5 | 112.9 | 1244,600 | | 150 | 35.6 | 47.1 | 32,600 | | 170 | 60.8 | 138.6 | 23,500 | | 170 | 51.0 | 209.6 | 22,600 |
| | 45 | 69.8 | 111.1 | 102,600 | | 160 | 34.1 | 64.8 | 28,200 | | 180 | 58.1 | 124.8 | 20,500 | | 200 | 41.8 | 180.6 | 14,800 |
| | 50 | 66.9 | 109.0 | 121,300 | | 170 | 31.9 | 96.8 | 24,100 | | 190 | 55.8 | 96.1 | 18,500 | | 210 | 38.4 | 165.6 | 12,600 |
| | 60 | 61.1 | 103.9 | 121,400 | | 180 | 28.1 | 86.8 | 16,400 | | 200 | 32.1 | 86.8 | 16,400 | | 230 | 34.5 | 154.9 | 11,100 |
| | 70 | 54.9 | 97.4 | 105,200 | | 190 | 24.4 | 74.0 | 12,600 | | 210 | 27.3 | 74.0 | 12,600 | | 240 | 30.3 | 139.0 | 9,300 |
| | 80 | 48.1 | 89.5 | 86,900 | | 200 | 20.6 | 62.2 | 11,800 | | 230 | 25.7 | 119.9 | 7,300 | | 240 | 25.0 | 119.9 | 7,300 |
| | 90 | 40.5 | 78.3 | 71,400 | | 210 | 17.9 | 50.6 | 10,900 | | 240 | 20.4 | 95.7 | 5,700 | | 260 | 17.7 | 79.4 | 4,600 |
| 120 | 25 | 77.9 | 125.0 | 1390,500 | 750 | 120 | 43.7 | 105.0 | 46,900 | 210 | 140 | 70.5 | 169.1 | 16,500 | 260 | 120 | 64.2 | 241.9 | 41,100 |
| | 30 | 75.3 | 124.0 | 1306,500 | | 130 | 41.3 | 91.6 | 43,400 | | 150 | 65.9 | 160.9 | 30,100 | | 130 | 61.7 | 236.6 | 37,400 |
| | 35 | 72.5 | 122.4 | 1244,500 | | 140 | 39.8 | 74.0 | 36,700 | | 160 | 63.0 | 150.4 | 26,600 | | 150 | 58.8 | 237.4 | 25,300 |
| | 40 | 72.5 | 122.4 | 1244,500 | | 150 | 35.6 | 47.1 | 32,600 | | 170 | 60.8 | 138.6 | 23,500 | | 170 | 51.0 | 209.6 | 22,600 |
| | 45 | 71.5 | 121.8 | 102,500 | | 160 | 34.1 | 64.8 | 28,200 | | 180 | 58.1 | 124.8 | 20,500 | | 200 | 41.8 | 180.6 | 14,800 |
| | 50 | 69.0 | 119.9 | 121,200 | | 170 | 31.9 | 96.8 | 24,100 | | 190 | 55.8 | 96.1 | 18,500 | | 210 | 38.4 | 165.6 | 12,600 |
| | 60 | 63.7 | 115.3 | 121,300 | | 180 | 28.1 | 86.8 | 16,400 | | 200 | 32.1 | 86.8 | 16,400 | | 230 | 34.5 | 154.9 | 11,100 |
| | 70 | 58.2 | 109.5 | 105,100 | | 190 | 24.4 | 74.0 | 12,600 | | 210 | 27.3 | 74.0 | 12,600 | | 240 | 30.3 | 139.0 | 9,300 |
| | 80 | 52.3 | 102.2 | 86,800 | | 200 | 20.6 | 62.2 | 11,800 | | 230 | 25.7 | 119.9 | 7,300 | | 240 | 25.0 | 119.9 | 7,300 |
| | 90 | 45.9 | 93.4 | 71,300 | | 210 | 17.9 | 50.6 | 10,900 | | 240 | 20.4 | 95.7 | 5,700 | | 260 | 17.7 | 79.4 | 4,600 |
| 130 | 25 | 77.9 | 134.0 | 1390,400 | 750 | 120 | 43.7 | 105.0 | 46,900 | 210 | 140 | 70.5 | 169.1 | 16,500 | 260 | 120 | 64.2 | 241.9 | 41,100 |
| | 30 | 75.3 | 132.8 | 1306,400 | | 130 | 41.3 | 91.6 | 43,400 | | 150 | 65.9 | 160.9 | 30,100 | | 130 | 61.7 | 236.6 | 37,400 |
| | 35 | 72.5 | 131.4 | 1244,400 | | 140 | 39.8 | 74.0 | 36,700 | | 160 | 63.0 | 150.4 | 26,600 | | 150 | 58.8 | 237.4 | 25,300 |
| | 40 | 72.5 | 131.4 | 1244,400 | | 150 | 35.6 | 47.1 | 32,600 | | 170 | 60.8 | 138.6 | 23,500 | | 170 | 51.0 | 209.6 | 22,600 |
| | 45 | 71.5 | 130.8 | 102,400 | | 160 | 34.1 | 64.8 | 28,200 | | 180 | 58.1 | 124.8 | 20,500 | | 200 | 41.8 | 180.6 | 14,800 |
| | 50 | 69.0 | 129.9 | 121,100 | | 170 | 31.9 | 96.8 | 24,100 | | 190 | 55.8 | 96.1 | 18,500 | | 210 | 38.4 | 165.6 | 12,600 |
| | 60 | 63.7 | 125.3 | 121,200 | | 180 | 28.1 | 86.8 | 16,400 | | 200 | 32.1 | 86.8 | 16,400 | | 230 | 34.5 | 154.9 | |

MAXIMUM MAIN COUNTERWEIGHT — 85,000 LBS
 MAXIMUM BUMPER COUNTERWEIGHT — 21,600 LBS

| Booms | | | | Capacity | Capacities Below Apply To Jibs — See Jib Data | | | | | | | | | | | |
|-------|-------------------|-------|----------|-----------|---|--------|----------|--------|---------------|--------|----------|--------|---------------|----------|----------|----------|
| L | R | A | H | | Boom Plus Jib | | Capacity | | Boom Plus Jib | | Capacity | | Boom Plus Jib | | Capacity | |
| | | | | | Length | Radius | Length | Radius | Length | Radius | Length | Radius | Length | Radius | | |
| 300' | 40 | 79.8 | 202.6 | * 124,800 | 140' | 80 | * 80,000 | 90 | 72,200 | 90 | * 61,000 | 130' | 130' | * 31,000 | 130' | * 31,000 |
| | 70 | 77.8 | 201.5 | 101,600 | | 100 | 72,800 | 100 | 60,800 | 100 | 62,100 | 130' | 130' | * 31,000 | 130' | * 31,000 |
| | 80 | 75.9 | 199.1 | 82,700 | | 100 | 61,400 | 110 | 51,600 | 130' | 130' | 52,900 | 130' | * 31,000 | 130' | * 31,000 |
| | 90 | 73.9 | 196.4 | 68,800 | | 110 | 52,400 | 120 | 44,500 | 130' | 130' | 45,400 | 130' | * 31,000 | 130' | * 31,000 |
| | 100 | 71.9 | 193.2 | 58,100 | | 120 | 45,100 | 130' | 38,400 | 130' | 39,200 | 130' | * 31,000 | 130' | * 31,000 | |
| | 110 | 69.9 | 189.7 | 49,600 | | 130 | 39,100 | 140 | 33,300 | 130' | 39,200 | 130' | * 31,000 | 130' | * 31,000 | |
| | 120 | 67.8 | 185.7 | 42,700 | | 140 | 34,000 | 150 | 28,900 | 130' | 39,200 | 130' | * 31,000 | 130' | * 31,000 | |
| | 130 | 65.6 | 181.4 | 37,000 | | 150 | 29,700 | 160 | 25,700 | 130' | 39,200 | 130' | * 31,000 | 130' | * 31,000 | |
| | 140 | 63.6 | 176.6 | 32,300 | | 160 | 25,900 | 170 | 23,000 | 130' | 39,200 | 130' | * 31,000 | 130' | * 31,000 | |
| | Midpoint Location | 150 | 61.4 | 171.1 | | 28,200 | 170 | 22,800 | 180 | 20,700 | 130' | 39,200 | 130' | * 31,000 | 130' | * 31,000 |
| | 160 | 59.2 | 165.1 | 24,700 | | 180 | 19,800 | 190 | 18,500 | 130' | 39,200 | 130' | * 31,000 | 130' | * 31,000 | |
| | 170 | 57.0 | 159.2 | 21,600 | | 190 | 17,200 | 200 | 16,200 | 130' | 39,200 | 130' | * 31,000 | 130' | * 31,000 | |
| 180 | 54.7 | 152.1 | 18,900 | 200 | 15,000 | 210 | 14,200 | 130' | 39,200 | 130' | * 31,000 | 130' | * 31,000 | | | |
| 190 | 52.3 | 144.8 | 16,500 | 210 | 12,900 | 220 | 12,500 | 130' | 39,200 | 130' | * 31,000 | 130' | * 31,000 | | | |
| 200 | 49.8 | 136.4 | 14,400 | 220 | 11,100 | 230 | 10,300 | 130' | 39,200 | 130' | * 31,000 | 130' | * 31,000 | | | |
| 210 | 47.2 | 127.7 | 12,400 | 230 | 9,500 | 240 | 8,700 | 130' | 39,200 | 130' | * 31,000 | 130' | * 31,000 | | | |
| 220 | 44.6 | 117.9 | * 10,700 | 240 | 8,100 | 250 | 7,300 | 130' | 39,200 | 130' | * 31,000 | 130' | * 31,000 | | | |
| 230 | 41.8 | 107.1 | * 8,900 | 250 | 6,900 | 260 | 6,100 | 130' | 39,200 | 130' | * 31,000 | 130' | * 31,000 | | | |
| 240 | 38.8 | 95.2 | * 6,900 | 260 | 5,900 | 270 | 5,200 | 130' | 39,200 | 130' | * 31,000 | 130' | * 31,000 | | | |
| 250 | 35.6 | 81.8 | * 5,300 | 270 | 5,000 | 280 | 4,300 | 130' | 39,200 | 130' | * 31,000 | 130' | * 31,000 | | | |
| 260 | 32.1 | 66.7 | * 4,200 | 280 | 4,300 | 290 | 3,700 | 130' | 39,200 | 130' | * 31,000 | 130' | * 31,000 | | | |
| 330' | 70 | 76.2 | 111.8 | 101,500 | 150' | 80 | * 80,000 | 90 | 72,700 | 90 | * 40,000 | 130' | 130' | * 27,000 | 130' | * 27,000 |
| | 80 | 76.1 | 109.1 | 82,600 | | 100 | 61,300 | 110 | 51,700 | 130' | 130' | 40,000 | 130' | * 27,000 | 130' | * 27,000 |
| | 90 | 74.4 | 106.8 | 68,700 | | 110 | 52,300 | 120 | 44,300 | 130' | 130' | 40,000 | 130' | * 27,000 | 130' | * 27,000 |
| | 100 | 72.5 | 103.7 | 58,000 | | 120 | 45,000 | 130' | 38,200 | 130' | 39,000 | 130' | * 27,000 | 130' | * 27,000 | |
| | 110 | 70.5 | 100.1 | 49,500 | | 130 | 39,000 | 140 | 33,100 | 130' | 39,000 | 130' | * 27,000 | 130' | * 27,000 | |
| | 120 | 68.6 | 96.3 | 42,600 | | 140 | 34,000 | 150 | 28,800 | 130' | 39,000 | 130' | * 27,000 | 130' | * 27,000 | |
| | 130 | 66.6 | 92.3 | 36,900 | | 150 | 29,500 | 160 | 25,000 | 130' | 39,000 | 130' | * 27,000 | 130' | * 27,000 | |
| | 140 | 64.5 | 88.7 | 32,200 | | 160 | 25,800 | 170 | 23,000 | 130' | 39,000 | 130' | * 27,000 | 130' | * 27,000 | |
| | 150 | 62.4 | 84.7 | 28,100 | | 170 | 22,500 | 180 | 20,700 | 130' | 39,000 | 130' | * 27,000 | 130' | * 27,000 | |
| | 160 | 60.3 | 80.7 | 24,600 | | 180 | 19,700 | 190 | 18,500 | 130' | 39,000 | 130' | * 27,000 | 130' | * 27,000 | |
| | 170 | 58.2 | 77.1 | 21,500 | | 190 | 17,300 | 200 | 16,200 | 130' | 39,000 | 130' | * 27,000 | 130' | * 27,000 | |
| | 180 | 56.0 | 73.4 | 18,800 | | 200 | 14,800 | 210 | 14,200 | 130' | 39,000 | 130' | * 27,000 | 130' | * 27,000 | |
| 190 | 53.7 | 69.4 | 16,500 | 210 | 12,900 | 220 | 12,500 | 130' | 39,000 | 130' | * 27,000 | 130' | * 27,000 | | | |
| 200 | 51.4 | 64.7 | 14,300 | 220 | 11,000 | 230 | 10,300 | 130' | 39,000 | 130' | * 27,000 | 130' | * 27,000 | | | |
| 210 | 48.9 | 60.2 | 12,300 | 230 | 9,200 | 240 | 8,700 | 130' | 39,000 | 130' | * 27,000 | 130' | * 27,000 | | | |
| 220 | 46.4 | 55.9 | * 10,600 | 240 | 7,500 | 250 | 7,300 | 130' | 39,000 | 130' | * 27,000 | 130' | * 27,000 | | | |
| 230 | 43.8 | 51.9 | * 8,800 | 250 | 6,000 | 260 | 5,900 | 130' | 39,000 | 130' | * 27,000 | 130' | * 27,000 | | | |
| 240 | 41.0 | 47.8 | * 6,800 | 260 | 4,800 | 270 | 4,600 | 130' | 39,000 | 130' | * 27,000 | 130' | * 27,000 | | | |
| 250 | 38.1 | 43.6 | * 5,200 | 270 | 3,900 | 280 | 3,700 | 130' | 39,000 | 130' | * 27,000 | 130' | * 27,000 | | | |
| 260 | 35.0 | 39.0 | * 4,200 | 280 | 3,200 | 290 | 3,000 | 130' | 39,000 | 130' | * 27,000 | 130' | * 27,000 | | | |

THIS CHART IS BASED UPON:

- Capacities marked by * are based upon structural limitations of the machine; all others do not exceed 85% of tipping in the least stable direction.
- When the machine is equipped with standard outriggers and front auxiliary outriggers, full 360° rotation of the crane is permitted. However, when operating the crane in the front sector, the load radius shall not be less than 15' (Refer to diagrams below).
- Machine to be leveled on a firm solid support; shock and side loads are to be prevented.
- When lifting a load, the outriggers must be fully extended horizontally, the outrigger floats down, and all tires free of the ground.
- All hook blocks, lifting tackle and jib attachments are considered a part of the load to be lifted.
- Exceeding these loads or altering the counterweight nullifies all warranties.
- Crane must be in fully raised position when handling booms or boom plus jib combinations.
- When the machine is equipped with standard outriggers, over the side is the least stable direction.
- Load ratings shown on this chart make no allowance for such factors as the effect of side loads, wind, ground condition, and operating speed. The operator therefore shall reduce loads in order to take these factors into account.



Capacities Per S.A.E. Code J-255
 Class Designation Per U.S. Dept. of Commerce Standards.

L = Boom Length
 R = Load Radius from Centerline of Rotation
 H = Height of Boom Pivot Shaft Above Ground
 A = Boom Angle Above Horizontal

TUBULAR BOOM
202 METRIC TON CLASS 5.5 - 12M

CRANE CAPACITY CHART
OVER SIDE AND OVER BEAM
ON STANDARD OUTRIGGERS

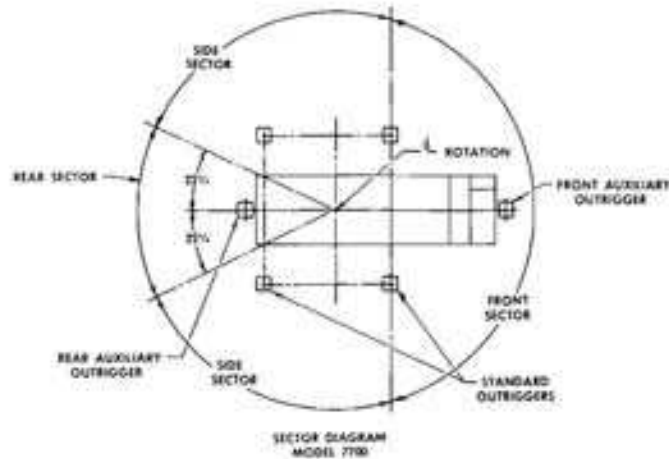
| ROOM | | | | CAPACITY | ROOM | | | | CAPACITY | ROOM | | | | CAPACITY | ROOM | | | | CAPACITY |
|-------|------|------|--------|----------|-------|------|--------|------|----------|--------|--------|------|------|----------|--------|------|------|------|----------|
| L | R | A | H | | L | R | A | H | | L | R | A | H | | L | R | A | H | |
| 21.3M | 5.5 | 8.10 | 23.5 | 172,700 | 45.7M | 10.7 | 79.2 | 47.4 | 133,900 | 84.0M | 13.7 | 79.6 | 65.4 | 91,400 | 79.2M | 18.1 | 78.2 | 80.0 | 58,500 |
| | 6 | 79.6 | 23.4 | 179,900 | | 12 | 77.5 | 47.1 | 131,500 | | 15 | 78.4 | 65.1 | 79,600 | | 20 | 76.9 | 79.6 | 58,100 |
| | 8 | 74.1 | 22.9 | 208,900 | | 14 | 74.9 | 46.6 | 88,800 | | 18 | 71.6 | 64.4 | 60,300 | | 23 | 74.7 | 78.9 | 41,200 |
| | 9 | 71.2 | 22.6 | 181,400 | | 17 | 71.0 | 45.4 | 66,000 | | 21 | 72.8 | 63.5 | 47,800 | | 26 | 72.4 | 77.9 | 34,100 |
| | 11 | 65.4 | 21.7 | 132,300 | | 20 | 66.9 | 44.4 | 52,200 | | 24 | 70.0 | 62.2 | 39,100 | | 29 | 70.1 | 76.9 | 28,700 |
| | 13 | 59.2 | 20.6 | 100,300 | | 23 | 62.8 | 42.9 | 42,500 | | 27 | 67.1 | 61.3 | 32,700 | | 32 | 67.8 | 75.7 | 24,500 |
| | 15 | 52.6 | 19.1 | 80,200 | | 26 | 58.4 | 41.2 | 35,500 | | 30 | 64.1 | 59.9 | 27,700 | | 35 | 65.4 | 74.4 | 21,000 |
| | 18 | 45.2 | 16.1 | 61,100 | | 29 | 53.8 | 39.5 | 30,200 | | 33 | 61.1 | 58.5 | 23,800 | | 38 | 63.0 | 72.9 | 18,200 |
| 21 | 37.9 | 13.3 | 49,000 | 32 | 49.0 | 36.7 | 26,700 | 36 | 58.0 | 56.5 | 20,700 | 41 | 60.5 | 71.3 | 15,900 | | | | |
| 23.3 | 29.4 | 10.5 | 47,900 | 35 | 43.7 | 33.7 | 22,700 | 39 | 54.7 | 54.5 | 18,100 | 44 | 58.0 | 69.5 | 13,900 | | | | |
| 24.4M | 7.6 | 77.0 | 26.2 | 217,700 | 48.8M | 10.7 | 79.9 | 50.5 | 130,200 | 87.1M | 13.2 | 78.7 | 68.2 | 77,600 | 82.3M | 18.1 | 78.6 | 81.1 | 50,400 |
| | 9 | 73.7 | 25.8 | 181,300 | | 12 | 78.3 | 50.2 | 131,200 | | 15 | 77.2 | 67.8 | 68,800 | | 20 | 77.4 | 82.8 | 51,000 |
| | 11 | 68.6 | 25.0 | 132,200 | | 14 | 75.9 | 49.7 | 88,700 | | 18 | 74.5 | 67.0 | 51,300 | | 23 | 75.3 | 82.0 | 41,300 |
| | 13 | 63.4 | 24.1 | 100,000 | | 17 | 72.2 | 48.8 | 68,000 | | 21 | 72.2 | 65.8 | 46,600 | | 26 | 73.1 | 81.1 | 34,000 |
| | 15 | 58.0 | 22.9 | 80,100 | | 20 | 68.5 | 47.2 | 52,000 | | 24 | 70.0 | 64.5 | 41,600 | | 29 | 70.9 | 80.1 | 28,600 |
| | 18 | 49.0 | 20.6 | 61,100 | | 23 | 64.6 | 46.4 | 45,500 | | 27 | 67.1 | 63.7 | 36,600 | | 32 | 68.7 | 79.0 | 24,400 |
| | 21 | 38.5 | 17.3 | 48,900 | | 26 | 60.6 | 44.8 | 35,400 | | 29 | 66.1 | 61.7 | 32,200 | | 35 | 66.4 | 77.7 | 21,000 |
| | 24 | 34.4 | 12.0 | 40,500 | | 29 | 56.4 | 42.9 | 30,800 | | 32 | 62.1 | 60.2 | 27,600 | | 38 | 64.1 | 76.3 | 18,200 |
| 24.4 | 21.9 | 11.1 | 39,600 | 32 | 52.1 | 40.6 | 26,000 | 35 | 57.6 | 58.8 | 24,600 | 41 | 61.7 | 74.8 | 15,900 | | | | |
| 27.4M | 7.6 | 78.5 | 29.3 | 217,400 | 51.8M | 12.2 | 78.8 | 53.3 | 109,100 | 90.2M | 15.2 | 79.2 | 71.3 | 77,600 | 85.3M | 20 | 77.9 | 82.8 | 51,000 |
| | 9 | 75.3 | 28.0 | 181,000 | | 14 | 76.8 | 52.9 | 88,700 | | 18 | 77.2 | 70.2 | 61,700 | | 23 | 77.8 | 82.0 | 41,300 |
| | 11 | 71.1 | 28.3 | 132,200 | | 17 | 73.3 | 52.0 | 65,900 | | 21 | 75.4 | 69.5 | 46,600 | | 26 | 75.8 | 81.1 | 34,000 |
| | 13 | 66.6 | 27.5 | 100,000 | | 20 | 69.8 | 51.0 | 53,000 | | 24 | 73.2 | 68.2 | 41,600 | | 29 | 74.8 | 80.1 | 28,600 |
| | 15 | 61.9 | 26.5 | 80,300 | | 23 | 66.2 | 49.7 | 42,100 | | 27 | 70.9 | 67.1 | 36,600 | | 32 | 73.1 | 79.0 | 24,400 |
| | 18 | 54.4 | 24.5 | 61,000 | | 26 | 62.5 | 48.2 | 35,500 | | 29 | 69.1 | 65.7 | 32,200 | | 35 | 71.6 | 83.4 | 20,600 |
| | 21 | 46.1 | 21.9 | 48,800 | | 29 | 58.7 | 46.3 | 29,800 | | 32 | 65.1 | 63.5 | 27,600 | | 38 | 69.3 | 82.3 | 18,200 |
| | 24 | 36.3 | 18.3 | 40,400 | | 32 | 54.7 | 44.5 | 25,600 | | 35 | 61.1 | 61.7 | 24,000 | | 41 | 67.8 | 81.1 | 15,900 |
| 27.4 | 21.9 | 11.6 | 35,300 | 35 | 50.4 | 42.1 | 22,200 | 38 | 57.6 | 60.2 | 21,000 | 44 | 65.4 | 79.6 | 13,900 | | | | |
| 30.5M | 7.6 | 79.7 | 32.4 | 217,400 | 54.8M | 14.2 | 79.4 | 56.4 | 108,400 | 93.3M | 17.2 | 79.7 | 73.3 | 77,600 | 88.4M | 23 | 79.0 | 85.3 | 51,000 |
| | 9 | 77.0 | 32.1 | 181,000 | | 17 | 76.8 | 55.9 | 88,700 | | 21 | 77.7 | 71.9 | 61,700 | | 26 | 79.5 | 84.7 | 41,300 |
| | 11 | 73.1 | 31.5 | 132,100 | | 20 | 73.3 | 55.0 | 65,900 | | 24 | 75.2 | 70.2 | 46,600 | | 29 | 77.2 | 82.0 | 34,000 |
| | 13 | 69.1 | 30.8 | 99,900 | | 23 | 69.8 | 54.0 | 53,000 | | 27 | 72.7 | 69.3 | 41,600 | | 32 | 75.8 | 81.1 | 28,600 |
| | 15 | 65.0 | 29.9 | 80,000 | | 26 | 66.2 | 49.7 | 42,100 | | 29 | 70.3 | 68.3 | 36,600 | | 35 | 74.8 | 80.1 | 24,400 |
| | 18 | 58.5 | 28.2 | 61,000 | | 29 | 62.5 | 48.2 | 35,500 | | 32 | 66.1 | 66.7 | 32,200 | | 38 | 73.1 | 82.3 | 20,600 |
| | 21 | 51.3 | 26.9 | 48,800 | | 32 | 58.7 | 46.3 | 29,800 | | 35 | 62.1 | 64.5 | 27,600 | | 41 | 71.6 | 83.4 | 18,200 |
| | 24 | 43.7 | 23.2 | 40,400 | | 35 | 54.7 | 44.5 | 25,600 | | 38 | 59.1 | 62.7 | 24,000 | | 44 | 69.3 | 82.3 | 15,900 |
| 30.5 | 19.4 | 12.1 | 28,600 | 38 | 50.4 | 42.1 | 22,200 | 41 | 47.1 | 61.1 | 21,000 | 44 | 58.0 | 81.1 | 13,900 | | | | |
| 33.5M | 9.1 | 77.9 | 35.2 | 177,100 | 57.8M | 16.2 | 79.4 | 59.4 | 108,400 | 96.4M | 19.2 | 79.7 | 74.3 | 77,600 | 91.5M | 26 | 79.0 | 88.3 | 51,000 |
| | 11 | 74.7 | 34.7 | 132,100 | | 19 | 77.3 | 58.9 | 88,700 | | 23 | 77.7 | 73.3 | 61,700 | | 28 | 79.5 | 84.7 | 41,300 |
| | 13 | 71.1 | 34.1 | 99,900 | | 22 | 74.3 | 58.2 | 65,900 | | 26 | 75.2 | 70.2 | 46,600 | | 31 | 77.2 | 82.0 | 34,000 |
| | 15 | 67.4 | 33.3 | 80,000 | | 25 | 70.9 | 57.2 | 53,000 | | 29 | 72.7 | 69.3 | 41,600 | | 34 | 75.8 | 81.1 | 28,600 |
| | 18 | 61.7 | 31.8 | 60,900 | | 28 | 67.5 | 53.1 | 42,100 | | 32 | 70.3 | 68.3 | 36,600 | | 37 | 74.8 | 80.1 | 24,400 |
| | 21 | 55.8 | 29.9 | 48,700 | | 31 | 63.9 | 51.7 | 35,500 | | 35 | 66.1 | 66.7 | 32,200 | | 40 | 73.1 | 82.3 | 20,600 |
| | 24 | 49.0 | 27.5 | 40,300 | | 34 | 60.6 | 50.1 | 29,800 | | 38 | 62.1 | 64.5 | 27,600 | | 43 | 69.3 | 82.3 | 18,200 |
| | 27 | 41.8 | 24.4 | 34,000 | | 37 | 56.9 | 48.2 | 25,600 | | 41 | 58.0 | 62.7 | 24,000 | | 46 | 67.8 | 81.1 | 15,900 |
| 33.5 | 18.5 | 12.6 | 24,700 | 40 | 52.1 | 46.3 | 22,200 | 43 | 50.4 | 61.1 | 21,000 | 46 | 65.4 | 79.6 | 13,900 | | | | |
| 36.6M | 9.1 | 79.0 | 38.3 | 176,400 | 60.8M | 18.2 | 79.4 | 62.4 | 108,400 | 99.5M | 21.2 | 79.7 | 75.3 | 77,600 | 94.6M | 29 | 79.0 | 92.3 | 51,000 |
| | 11 | 76.0 | 37.9 | 132,100 | | 21 | 77.3 | 61.9 | 88,700 | | 24 | 77.7 | 74.3 | 61,700 | | 30 | 79.5 | 84.7 | 41,300 |
| | 13 | 72.7 | 37.3 | 99,900 | | 24 | 74.3 | 61.2 | 65,900 | | 27 | 75.2 | 70.2 | 46,600 | | 33 | 77.2 | 82.0 | 34,000 |
| | 15 | 69.4 | 36.4 | 79,000 | | 27 | 70.9 | 60.2 | 53,000 | | 29 | 72.7 | 69.3 | 41,600 | | 35 | 75.8 | 81.1 | 28,600 |
| | 18 | 64.7 | 35.2 | 60,900 | | 30 | 67.5 | 58.7 | 42,100 | | 32 | 70.3 | 68.3 | 36,600 | | 37 | 74.8 | 80.1 | 24,400 |
| | 21 | 58.8 | 33.5 | 48,700 | | 33 | 63.9 | 57.1 | 35,500 | | 35 | 66.1 | 66.7 | 32,200 | | 40 | 73.1 | 82.3 | 20,600 |
| | 24 | 51.1 | 31.4 | 40,200 | | 36 | 60.6 | 55.5 | 29,800 | | 38 | 62.1 | 64.5 | 27,600 | | 43 | 69.3 | 82.3 | 18,200 |
| | 27 | 46.8 | 28.8 | 34,000 | | 39 | 56.9 | 53.9 | 25,600 | | 41 | 58.0 | 62.7 | 24,000 | | 46 | 67.8 | 81.1 | 15,900 |
| 36.6 | 17.6 | 13.0 | 21,600 | 42 | 52.1 | 52.1 | 22,200 | 45 | 50.4 | 61.1 | 21,000 | 48 | 65.4 | 79.6 | 13,900 | | | | |
| 39.6M | 9.1 | 79.8 | 41.5 | 175,000 | 63.8M | 20.2 | 79.4 | 65.4 | 108,400 | 102.6M | 23.2 | 79.7 | 76.3 | 77,600 | 97.7M | 31 | 79.0 | 95.3 | 51,000 |
| | 11 | 77.1 | 41.0 | 132,100 | | 22 | 77.3 | 64.9 | 88,700 | | 25 | 77.7 | 75.3 | 61,700 | | 32 | 79.5 | 84.7 | 41,300 |
| | 13 | 74.1 | 40.5 | 99,900 | | 25 | 74.3 | 64.2 | 65,900 | | 27 | 75.2 | 70.2 | 46,600 | | 34 | 77.2 | 82.0 | 34,000 |
| | 15 | 71.0 | 39.8 | 79,000 | | 28 | 70.9 | 63.2 | 53,000 | | 29 | 72.7 | 69.3 | 41,600 | | 35 | 75.8 | 81.1 | 28,600 |
| | 18 | 66.3 | 38.6 | 60,800 | | 31 | 67.5 | 61.7 | 42,100 | | 32 | 70.3 | 68.3 | 36,600 | | 37 | 74.8 | 80.1 | 24,400 |
| | 21 | 61.3 | 37.1 | 48,700 | | 34 | 63.9 | 60.1 | 35,500 | | 35 | 66.1 | 66.7 | 32,200 | | 40 | 73.1 | 82.3 | 20,600 |
| | 24 | 56.4 | 35.2 | 40,300 | | 37 | 60.6 | 58.5 | 29,800 | | 38 | 62.1 | 64.5 | 27,600 | | 43 | 69.3 | 82.3 | 18,200 |
| | 27 | 50.9 | 32.9 | 31,800 | | 40 | 56.9 | 56.9 | 25,600 | | 41 | 58.0 | 62.7 | 24,000 | | 46 | 67.8 | 81.1 | 15,900 |
| 39.6 | 16.9 | 13.5 | 18,900 | 43 | 52.1 | 55.1 | 22,200 | 46 | 50.4 | 61.1 | 21,000 | 49 | 65.4 | 79.6 | 13,900 | | | | |
| 42.7M | 10.7 | 78.5 | 44.3 | 138,900 | 66.8M | 22.2 | 79.4 | 68.4 | 108,400 | 105.7M | 25.2 | 79.7 | 77.3 | 77,600 | 100.8M | 33 | 79.0 | 98.3 | 51,000 |
| | 12 | 76.6 | 43.9 | 131,700 | | 23 | 77.8 | 67.9 | 88,700 | | 26 | 77.7 | 76.3 | 61,700 | | 34 | 79.5 | 84.7 | 41,300 |
| | 14 | 73.8 | 43.4 | 88,800 | | 26 | 74.9 | 67.2 | 65,900 | | 27 | 75.2 | 70.2 | 46,600 | | 35 | 77.2 | 82.0 | 34,000 |
| | 17 | 69.6 | 42.2 | 66,300 | | 29 | 71.0 | 66.1 | 53,000 | | 29 | 72.7 | 69.3 | 41,600 | | 37 | 75.8 | 81.1 | 28,600 |
| | 20 | 65.2 | 41.0 | 52,300 | | 32 | 68 | | | | | | | | | | | | |

MAXIMUM MAIN COUNTERWEIGHT — 38,550kg
 MAXIMUM BUMPER COUNTERWEIGHT — 9,790kg

| BOOM | | | CAPACITY | CAPACITIES BELOW APPLY TO JIBS — SEE JIB DATA | | | | | | | | | | | | |
|--|------|------|----------|---|---|--------|---------------|---|--------|---------------|---|--------|----------|---|------|----------|
| L | R | A | | BOOM PLUS JIB | | | BOOM PLUS JIB | | | BOOM PLUS JIB | | | | | | |
| | | | Length | Radius | CAPACITY | Length | Radius | CAPACITY | Length | Radius | CAPACITY | Length | Radius | CAPACITY | | |
| 91.4M Midpoint Location 48.8M Midpoint Sag 43.2cm | 18.3 | 79.8 | 92.5 | * 56,500 | 303.6M (91.4M + 12.2M) Midpoint Location 48.8M Midpoint Sag 43.2cm | 24.4 | * 36,200 | 309.7M (97.5M + 12.2M) Midpoint Location 48.8M Midpoint Sag 43.2cm | 27.4 | 12,700 | 315.8M (100.6M + 15.2M) Midpoint Location 48.8M Midpoint Sag 43.2cm | 27.4 | * 28,500 | 321.9M (95.5M + 27.4M) Midpoint Location 48.8M Midpoint Sag 43.2cm | 33.3 | * 14,000 |
| | 20 | 78.7 | 92.1 | 50,400 | | 25 | 34,900 | | 29 | 29,900 | | 29 | * 28,100 | | 35 | * 14,000 |
| | 21 | 76.8 | 91.5 | 45,100 | | 29 | 30,400 | | 32 | 25,400 | | 32 | 22,200 | | 38 | * 14,000 |
| | 26 | 74.8 | 90.7 | 33,900 | | 31 | 25,600 | | 35 | 21,600 | | 35 | 19,200 | | 44 | * 14,000 |
| | 29 | 72.9 | 89.8 | 28,500 | | 35 | 22,000 | | 38 | 18,000 | | 38 | 16,000 | | 47 | * 14,000 |
| | 32 | 70.9 | 88.8 | 24,300 | | 41 | 16,500 | | 41 | 16,300 | | 41 | 14,400 | | 50 | 12,600 |
| | 35 | 68.9 | 87.7 | 20,900 | | 44 | 14,500 | | 44 | 14,100 | | 44 | 12,600 | | 53 | 11,300 |
| | 38 | 66.8 | 86.4 | 18,000 | | 47 | 13,000 | | 47 | 12,400 | | 47 | 11,000 | | 56 | 9,800 |
| | 41 | 64.8 | 85.0 | 15,700 | | 50 | 11,700 | | 50 | 10,900 | | 50 | 9,500 | | 59 | 8,600 |
| | 44 | 62.7 | 83.5 | 13,800 | | 56 | 9,500 | | 56 | 8,700 | | 56 | 8,200 | | 62 | 7,400 |
| | 47 | 60.5 | 81.9 | 12,000 | | 59 | 8,500 | | 59 | 7,900 | | 59 | 7,200 | | 65 | 6,600 |
| | 50 | 58.3 | 80.1 | 10,600 | | 62 | 7,600 | | 62 | 7,100 | | 62 | 6,500 | | 68 | 5,800 |
| | 53 | 56.1 | 78.1 | 9,300 | | 65 | 6,800 | | 65 | 6,300 | | 65 | 5,700 | | 71 | 5,000 |
| | 56 | 53.8 | 76.0 | 8,100 | | 68 | 6,100 | | 68 | 5,600 | | 68 | 5,100 | | 74 | 4,300 |
| | 59 | 51.4 | 73.7 | 7,100 | | 71 | 5,500 | | 71 | 5,000 | | 71 | 4,600 | | 77 | 3,800 |
| 62 | 48.9 | 71.2 | 6,200 | 74 | 4,900 | 74 | 4,500 | 74 | 4,200 | 79.2 | 3,500 | | | | | |
| 65 | 46.4 | 68.4 | 5,300 | 77 | 4,300 | 77 | 4,000 | 77 | 3,700 | | | | | | | |
| 68 | 43.7 | 65.4 | 4,500 | 79.2 | 3,800 | 79.2 | 3,500 | 79.2 | 3,200 | | | | | | | |
| 71 | 40.9 | 62.0 | 3,700 | | | | | | | | | | | | | |
| 74 | 37.9 | 58.3 | 2,900 | | | | | | | | | | | | | |
| 77 | 34.7 | 54.2 | 2,200 | | | | | | | | | | | | | |
| 79.2 | 32.1 | 50.7 | 1,500 | | | | | | | | | | | | | |
| 94.5M Midpoint Location 48.8M Midpoint Sag 43.2cm | 21.3 | 78.2 | 95.0 | 46,500 | 306.7M (94.5M + 12.2M) Midpoint Location 48.8M Midpoint Sag 43.2cm | 24.4 | * 36,200 | 312.8M (100.6M + 12.2M) Midpoint Location 48.8M Midpoint Sag 43.2cm | 27.4 | 12,700 | 318.9M (107.5M + 21.3M) Midpoint Location 48.8M Midpoint Sag 43.2cm | 27.4 | * 29,800 | 325.0M (94.5M + 30.5M) Midpoint Location 48.8M Midpoint Sag 43.2cm | 33.3 | * 12,800 |
| | 23 | 77.2 | 94.6 | 41,000 | | 25 | 34,900 | | 29 | 29,800 | | 29 | * 28,100 | | 35 | * 12,800 |
| | 26 | 75.3 | 93.8 | 33,800 | | 29 | 30,300 | | 32 | 25,300 | | 32 | 22,200 | | 38 | * 12,800 |
| | 29 | 73.4 | 93.0 | 28,500 | | 32 | 25,600 | | 35 | 21,600 | | 35 | 19,200 | | 44 | * 12,800 |
| | 32 | 71.5 | 92.0 | 24,200 | | 35 | 22,000 | | 38 | 18,000 | | 38 | 16,000 | | 47 | * 12,800 |
| | 35 | 68.6 | 90.9 | 20,800 | | 41 | 16,500 | | 41 | 16,300 | | 41 | 14,400 | | 50 | 12,100 |
| | 38 | 67.6 | 89.7 | 18,000 | | 44 | 14,500 | | 44 | 14,100 | | 44 | 12,600 | | 53 | 11,200 |
| | 41 | 65.6 | 88.4 | 15,700 | | 47 | 13,000 | | 47 | 12,400 | | 47 | 11,000 | | 56 | 9,800 |
| | 44 | 63.6 | 87.0 | 13,700 | | 50 | 11,700 | | 50 | 10,900 | | 50 | 9,500 | | 59 | 8,600 |
| | 47 | 61.6 | 85.4 | 12,000 | | 56 | 9,500 | | 56 | 8,700 | | 56 | 8,200 | | 62 | 7,400 |
| | 50 | 59.5 | 83.7 | 10,500 | | 59 | 8,500 | | 59 | 7,900 | | 59 | 7,200 | | 65 | 6,600 |
| | 53 | 57.1 | 81.8 | 9,300 | | 62 | 7,600 | | 62 | 7,100 | | 62 | 6,500 | | 68 | 5,800 |
| | 56 | 54.7 | 79.8 | 8,100 | | 65 | 6,800 | | 65 | 6,300 | | 65 | 5,700 | | 71 | 5,000 |
| | 59 | 52.9 | 77.6 | 7,000 | | 68 | 6,100 | | 68 | 5,600 | | 68 | 5,100 | | 74 | 4,300 |
| | 62 | 50.5 | 75.2 | 6,100 | | 71 | 5,500 | | 71 | 5,000 | | 71 | 4,600 | | 77 | 3,800 |
| 65 | 48.1 | 72.6 | 5,300 | 74 | 4,900 | 74 | 4,500 | 74 | 4,200 | 79.2 | 3,500 | | | | | |
| 68 | 45.6 | 69.7 | 4,500 | 77 | 4,300 | 77 | 4,000 | 77 | 3,700 | | | | | | | |
| 71 | 43.0 | 66.6 | 3,700 | 79.2 | 3,800 | 79.2 | 3,500 | 79.2 | 3,200 | | | | | | | |
| 74 | 40.2 | 63.2 | 2,900 | | | | | | | | | | | | | |
| 77 | 37.3 | 59.4 | 2,200 | | | | | | | | | | | | | |
| 79.2 | 35.0 | 56.3 | 1,600 | | | | | | | | | | | | | |
| 97.5M Midpoint Location 48.8M Midpoint Sag 43.2cm | 21.3 | 78.6 | 98.1 | 43,300 | 309.7M (97.5M + 12.2M) Midpoint Location 48.8M Midpoint Sag 43.2cm | 24.4 | * 36,200 | 315.8M (103.6M + 12.2M) Midpoint Location 48.8M Midpoint Sag 43.2cm | 27.4 | 12,700 | 321.9M (109.7M + 21.3M) Midpoint Location 48.8M Midpoint Sag 43.2cm | 27.4 | * 29,800 | 328.0M (97.5M + 30.5M) Midpoint Location 48.8M Midpoint Sag 43.2cm | 33.3 | * 12,900 |
| | 23 | 77.6 | 97.7 | 40,800 | | 25 | 34,900 | | 29 | 29,800 | | 29 | * 28,100 | | 35 | * 12,900 |
| | 26 | 75.8 | 97.0 | 33,800 | | 29 | 30,300 | | 32 | 25,300 | | 32 | 22,200 | | 38 | * 12,900 |
| | 29 | 74.0 | 96.2 | 28,400 | | 32 | 25,600 | | 35 | 21,600 | | 35 | 19,200 | | 44 | * 12,900 |
| | 32 | 72.1 | 95.2 | 24,200 | | 35 | 22,000 | | 38 | 18,000 | | 38 | 16,000 | | 47 | * 12,900 |
| | 35 | 70.2 | 94.2 | 20,800 | | 41 | 16,500 | | 41 | 16,300 | | 41 | 14,400 | | 50 | 12,200 |
| | 38 | 68.4 | 93.0 | 18,000 | | 44 | 14,500 | | 44 | 14,100 | | 44 | 12,600 | | 53 | 11,300 |
| | 41 | 66.4 | 91.8 | 15,600 | | 47 | 13,000 | | 47 | 12,400 | | 47 | 11,000 | | 56 | 9,900 |
| | 44 | 64.5 | 90.4 | 13,600 | | 50 | 11,700 | | 50 | 10,900 | | 50 | 9,500 | | 59 | 8,700 |
| | 47 | 62.5 | 88.8 | 11,900 | | 56 | 9,500 | | 56 | 8,700 | | 56 | 8,200 | | 62 | 7,400 |
| | 50 | 60.5 | 87.2 | 10,400 | | 59 | 8,500 | | 59 | 7,900 | | 59 | 7,200 | | 65 | 6,600 |
| | 53 | 58.5 | 85.4 | 9,200 | | 62 | 7,600 | | 62 | 7,100 | | 62 | 6,500 | | 68 | 5,800 |
| | 56 | 56.4 | 83.5 | 7,900 | | 65 | 6,800 | | 65 | 6,300 | | 65 | 5,700 | | 71 | 5,000 |
| | 59 | 54.2 | 81.4 | 6,900 | | 68 | 6,100 | | 68 | 5,600 | | 68 | 5,100 | | 74 | 4,300 |
| | 62 | 52.0 | 79.1 | 6,000 | | 71 | 5,500 | | 71 | 5,000 | | 71 | 4,600 | | 77 | 3,800 |
| 65 | 49.7 | 76.6 | 5,200 | 74 | 4,900 | 74 | 4,500 | 74 | 4,200 | 79.2 | 3,500 | | | | | |
| 68 | 47.4 | 73.9 | 4,400 | 77 | 4,300 | 77 | 4,000 | 77 | 3,700 | | | | | | | |
| 71 | 44.9 | 71.0 | 3,500 | 79.2 | 3,800 | 79.2 | 3,500 | 79.2 | 3,200 | | | | | | | |
| 74 | 42.3 | 67.8 | 2,800 | | | | | | | | | | | | | |
| 77 | 39.6 | 64.3 | 2,100 | | | | | | | | | | | | | |
| 79.2 | 37.5 | 61.5 | 1,600 | | | | | | | | | | | | | |
| 100.6M Midpoint Location 48.8M Midpoint Sag 43.2cm | 21.3 | 78.9 | 103.2 | 44,000 | 312.8M (100.6M + 12.2M) Midpoint Location 48.8M Midpoint Sag 43.2cm | 24.4 | * 36,200 | 318.9M (106.7M + 12.2M) Midpoint Location 48.8M Midpoint Sag 43.2cm | 27.4 | 12,700 | 325.0M (112.8M + 21.3M) Midpoint Location 48.8M Midpoint Sag 43.2cm | 27.4 | * 29,800 | 331.1M (100.6M + 30.5M) Midpoint Location 48.8M Midpoint Sag 43.2cm | 33.3 | * 13,000 |
| | 23 | 78.0 | 100.8 | 40,400 | | 25 | 34,900 | | 29 | 29,800 | | 29 | * 28,100 | | 35 | * 13,000 |
| | 26 | 76.2 | 100.1 | 33,800 | | 29 | 30,300 | | 32 | 25,300 | | 32 | 22,200 | | 38 | * 13,000 |
| | 29 | 74.3 | 99.1 | 28,500 | | 32 | 25,600 | | 35 | 21,600 | | 35 | 19,200 | | 44 | * 13,000 |
| | 32 | 72.7 | 98.4 | 24,300 | | 35 | 22,000 | | 38 | 18,000 | | 38 | 16,000 | | 47 | * 13,000 |
| | 35 | 70.9 | 97.4 | 20,900 | | 41 | 16,500 | | 41 | 16,300 | | 41 | 14,400 | | 50 | 12,300 |
| | 38 | 69.0 | 96.3 | 18,000 | | 44 | 14,500 | | 44 | 14,100 | | 44 | 12,600 | | 53 | 11,400 |
| | 41 | 67.2 | 95.1 | 15,400 | | 47 | 13,000 | | 47 | 12,400 | | 47 | 11,000 | | 56 | 10,000 |
| | 44 | 65.3 | 93.7 | 13,400 | | 50 | 11,700 | | 50 | 10,900 | | 50 | 9,500 | | 59 | 8,800 |
| | 47 | 63.4 | 92.3 | 11,700 | | 56 | 9,500 | | 56 | 8,700 | | 56 | 8,200 | | 62 | 7,400 |
| | 50 | 61.5 | 90.7 | 10,200 | | 59 | 8,500 | | 59 | 7,900 | | 59 | 7,200 | | 65 | 6,600 |
| | 53 | 59.5 | 89.0 | 8,900 | | 62 | 7,600 | | 62 | 7,100 | | 62 | 6,500 | | 68 | 5,800 |
| | 56 | 57.5 | 87.5 | 7,800 | | 65 | 6,800 | | 65 | 6,300 | | 65 | 5,700 | | 71 | 5,000 |
| | 59 | 55.5 | 85.7 | 6,800 | | 68 | 6,100 | | 68 | 5,600 | | 68 | 5,100 | | 74 | 4,300 |
| | 62 | 53.4 | 83.9 | 5,900 | | 71 | 5,500 | | 71 | 5,000 | | 71 | 4,600 | | 77 | 3,800 |
| 65 | 51.2 | 81.6 | 5,000 | 74 | 4,900 | 74 | 4,500 | 74 | 4,200 | 79.2 | 3,500 | | | | | |
| 68 | 48.9 | 78.1 | 4,200 | 77 | 4,300 | 77 | 4,000 | 77 | 3,700 | | | | | | | |
| 71 | 46.6 | 75.3 | 3,400 | 79.2 | 3,800 | 79.2 | 3,500 | 79.2 | 3,200 | | | | | | | |
| 74 | 44.2 | 72.3 | 2,700 | | | | | | | | | | | | | |
| 77 | 41.7 | 69.1 | 2,000 | | | | | | | | | | | | | |
| 79.2 | 39.7 | 66.4 | 1,400 | | | | | | | | | | | | | |

This Chart is Based Upon:

- Capacities marked by * are based upon structural limitations of the machine; all others do not exceed 85% of tipping in the least stable direction.
- When the machine is equipped with standard outriggers and front auxiliary outriggers, full 360° rotation of the crane is permitted. However, when operating the crane in the front sector, the load radius shall not be less than 10.6 (Refer to diagram below.)
- Machine to be leveled on a firm solid support; shock and side loads are to be prevented.
- When lifting a load, the outriggers must be fully extended horizontally, the outrigger floats down, and all tires free of the ground.
- All hook blocks, lifting tackle and jib attachments are considered a part of the load to be lifted.
- Exceeding these loads or altering the counterweight nullifies all warranties.
- Crane must be in fully rated position when handling booms or boom plus jib combinations.
- When the machine is equipped with standard outriggers, over the side is the least stable direction.
- Load ratings shown on this chart make no allowance for such factors as the effect of side loads, wind, ground conditions, and operating speeds. The operator therefore shall reduce loads in order to take these factors into account.



Capacities Per S.A.E. Code J-765
 Class Designation Per U.S. Dept. of Commerce Standards

- L = Boom Length (in Meters)
- R = Load Radius From Centerline of Rotation (in Meters)
- H = Height of Boom Point Shaft Above Ground (in Meters)
- A = Boom Angle Above Horizontal (in Degrees)

TURBINE BOOM
300 TON CLASS 18-2017

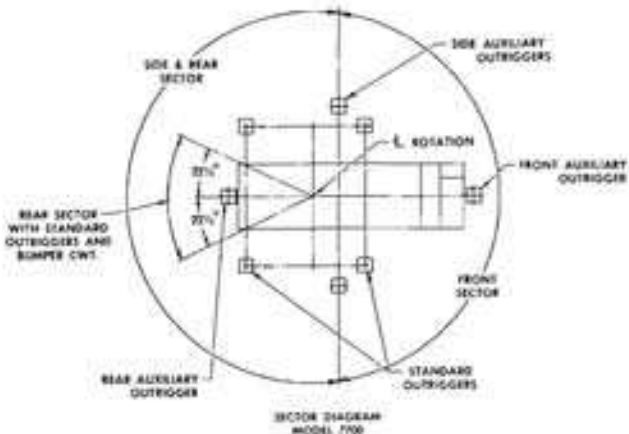
CRANE LIFTING CAPACITIES
MACHINE EQUIPPED WITH STANDARD OUTRIGGERS, AUXILIARY
OUTRIGGERS (SIDE, FRONT, AND REAR), AND BUMPER COUNTERWEIGHT

| BOOM | | | | CAPACITY | BOOM | | | | CAPACITY | BOOM | | | | CAPACITY | | | | | |
|------|-----|------|-------|----------|------|-----|------|-------|----------|------|-----|------|-------|----------|------|-----|------|-------|---------|
| L | R | A | H | | L | R | A | H | | L | R | A | H | | | | | | |
| 70' | 18 | 81.0 | 77.5 | 1600,000 | 150' | 35 | 79.2 | 155.6 | 299,800 | 230' | 45 | 79.5 | 274.8 | 201,800 | 260' | 60 | 78.2 | 262.8 | 133,400 |
| | 20 | 79.4 | 77.1 | 1517,700 | | 40 | 77.3 | 154.5 | 255,200 | | 50 | 78.2 | 273.8 | 171,200 | | 70 | 75.9 | 260.4 | 90,800 |
| | 25 | 75.1 | 75.8 | 1480,200 | | 45 | 75.1 | 153.2 | 221,600 | | 60 | 75.4 | 271.7 | 133,900 | | 80 | 73.6 | 257.6 | 89,500 |
| | 30 | 70.8 | 74.1 | 1391,000 | | 50 | 73.3 | 151.8 | 194,800 | | 70 | 72.5 | 268.4 | 108,300 | | 100 | 71.3 | 254.4 | 76,300 |
| | 35 | 66.4 | 71.9 | 1328,900 | | 60 | 69.1 | 148.2 | 154,300 | | 80 | 69.6 | 264.8 | 90,000 | | 130 | 69.0 | 250.7 | 65,700 |
| | 40 | 61.7 | 69.1 | 1281,300 | | 70 | 65.1 | 143.5 | 125,000 | | 90 | 66.7 | 260.7 | 75,600 | | 160 | 66.6 | 246.5 | 57,300 |
| | 45 | 56.9 | 66.1 | 1244,600 | | 80 | 60.8 | 138.5 | 102,600 | | 100 | 61.7 | 256.0 | 66,200 | | 190 | 64.2 | 241.9 | 50,300 |
| | 50 | 53.7 | 62.3 | 1205,000 | | 90 | 56.1 | 132.7 | 86,300 | | 130 | 60.3 | 250.3 | 57,800 | | 230 | 61.7 | 236.6 | 44,600 |
| | 60 | 40.0 | 52.0 | 109,000 | | 100 | 51.5 | 124.7 | 71,500 | | 160 | 57.3 | 244.4 | 50,800 | | 260 | 58.1 | 230.9 | 39,300 |
| | 70 | 23.6 | 34.7 | 325,800 | | 130 | 46.4 | 115.8 | 63,600 | | 200 | 54.0 | 237.4 | 45,100 | | 300 | 56.5 | 224.5 | 34,000 |
| 80' | 25 | 77.0 | 86.1 | 1481,900 | 160' | 35 | 79.9 | 165.8 | 287,250 | 240' | 50 | 78.7 | 228.0 | 171,300 | 270' | 60 | 78.0 | 273.0 | 113,000 |
| | 30 | 73.3 | 84.7 | 1390,900 | | 40 | 78.1 | 164.8 | 247,500 | | 60 | 76.0 | 225.7 | 133,800 | | 80 | 76.5 | 270.7 | 87,700 |
| | 35 | 69.5 | 82.9 | 1328,900 | | 45 | 76.3 | 163.6 | 216,000 | | 70 | 71.3 | 218.8 | 108,200 | | 100 | 72.0 | 268.0 | 76,000 |
| | 40 | 65.4 | 80.6 | 1281,900 | | 50 | 74.4 | 162.2 | 190,600 | | 80 | 70.6 | 215.5 | 89,900 | | 130 | 74.3 | 264.9 | 65,600 |
| | 45 | 61.5 | 78.0 | 1244,500 | | 60 | 70.6 | 158.9 | 152,400 | | 90 | 67.8 | 211.6 | 76,500 | | 160 | 74.0 | 261.4 | 57,200 |
| | 50 | 57.1 | 74.8 | 1208,900 | | 70 | 66.8 | 154.9 | 124,500 | | 100 | 64.9 | 207.7 | 66,500 | | 190 | 68.8 | 257.4 | 50,200 |
| | 60 | 48.1 | 66.8 | 1089,000 | | 80 | 62.8 | 150.0 | 102,500 | | 130 | 62.0 | 202.0 | 57,700 | | 230 | 65.2 | 253.0 | 44,500 |
| | 70 | 37.2 | 55.3 | 125,700 | | 90 | 58.6 | 144.2 | 85,900 | | 160 | 59.9 | 199.9 | 49,000 | | 260 | 62.8 | 248.0 | 39,000 |
| | 80 | 23.9 | 36.4 | 303,300 | | 100 | 54.1 | 137.4 | 71,300 | | 200 | 57.7 | 194.7 | 43,700 | | 300 | 60.4 | 242.3 | 33,900 |
| | 90 | 11.9 | 21.9 | 86,800 | | 130 | 49.7 | 129.4 | 63,400 | | 230 | 55.9 | 189.7 | 38,500 | | 360 | 57.9 | 236.4 | 29,500 |
| 90' | 30 | 75.2 | 95.1 | 1390,800 | 170' | 40 | 78.8 | 175.0 | 240,700 | 250' | 60 | 76.2 | 234.2 | 121,000 | 280' | 70 | 76.9 | 281.0 | 80,300 |
| | 35 | 71.9 | 93.5 | 1321,000 | | 45 | 77.1 | 173.9 | 208,000 | | 70 | 74.1 | 229.1 | 108,700 | | 90 | 74.8 | 278.4 | 69,300 |
| | 40 | 68.1 | 91.6 | 1278,700 | | 50 | 75.3 | 172.6 | 182,400 | | 80 | 71.5 | 226.7 | 89,800 | | 110 | 72.6 | 275.1 | 60,500 |
| | 45 | 64.0 | 89.3 | 1242,300 | | 60 | 73.8 | 169.3 | 144,900 | | 90 | 68.9 | 222.4 | 76,400 | | 130 | 70.5 | 272.1 | 52,500 |
| | 50 | 61.3 | 86.6 | 1208,000 | | 70 | 68.2 | 165.8 | 118,600 | | 100 | 66.1 | 218.1 | 66,000 | | 160 | 68.3 | 268.2 | 47,500 |
| | 60 | 53.7 | 79.9 | 1089,000 | | 80 | 64.5 | 161.7 | 99,600 | | 130 | 63.5 | 213.7 | 57,600 | | 190 | 66.1 | 264.0 | 40,100 |
| | 70 | 45.1 | 70.9 | 125,600 | | 90 | 60.7 | 155.9 | 84,900 | | 160 | 61.1 | 209.9 | 50,600 | | 230 | 63.9 | 259.2 | 35,800 |
| | 80 | 34.9 | 58.5 | 103,200 | | 100 | 56.7 | 149.7 | 72,500 | | 200 | 59.4 | 204.7 | 44,900 | | 260 | 61.5 | 254.0 | 31,800 |
| | 90 | 20.6 | 38.3 | 28,800 | | 130 | 52.5 | 142.4 | 62,600 | | 230 | 57.7 | 200.0 | 39,600 | | 300 | 59.2 | 248.2 | 28,400 |
| | 100 | 11.9 | 21.9 | 86,800 | | 160 | 48.1 | 133.9 | 54,600 | | 260 | 55.9 | 195.9 | 35,400 | | 360 | 57.9 | 242.4 | 25,600 |
| 100' | 30 | 77.9 | 115.8 | 1390,600 | 180' | 40 | 79.4 | 185.2 | 279,500 | 260' | 60 | 76.2 | 234.2 | 121,000 | 290' | 70 | 76.9 | 281.0 | 80,300 |
| | 35 | 75.1 | 114.5 | 1321,200 | | 45 | 77.8 | 184.2 | 240,300 | | 70 | 74.1 | 229.1 | 108,700 | | 90 | 74.8 | 278.4 | 69,300 |
| | 40 | 72.5 | 112.9 | 1272,600 | | 50 | 76.2 | 183.0 | 217,900 | | 80 | 71.5 | 226.7 | 89,800 | | 110 | 72.6 | 275.1 | 60,500 |
| | 45 | 69.8 | 111.1 | 1235,800 | | 60 | 72.9 | 180.3 | 140,300 | | 90 | 68.9 | 222.4 | 76,400 | | 130 | 70.5 | 272.1 | 52,500 |
| | 50 | 66.9 | 109.0 | 1207,300 | | 70 | 68.5 | 176.5 | 114,400 | | 100 | 66.1 | 218.1 | 66,000 | | 160 | 68.3 | 268.2 | 47,500 |
| | 60 | 61.3 | 103.9 | 1089,000 | | 80 | 64.6 | 172.3 | 95,500 | | 130 | 63.5 | 213.7 | 57,600 | | 190 | 66.1 | 264.0 | 40,100 |
| | 70 | 54.9 | 92.4 | 125,400 | | 90 | 60.8 | 166.1 | 81,800 | | 160 | 61.1 | 209.9 | 50,600 | | 230 | 63.9 | 259.2 | 35,800 |
| | 80 | 48.1 | 85.1 | 103,000 | | 100 | 56.8 | 161.6 | 70,800 | | 200 | 59.4 | 204.7 | 44,900 | | 260 | 61.5 | 254.0 | 31,800 |
| | 90 | 40.5 | 78.3 | 88,600 | | 130 | 52.5 | 154.4 | 62,600 | | 230 | 57.7 | 200.0 | 39,600 | | 300 | 59.2 | 248.2 | 28,400 |
| | 100 | 31.4 | 64.1 | 74,200 | | 160 | 48.1 | 145.9 | 54,600 | | 260 | 55.9 | 195.9 | 35,400 | | 360 | 57.9 | 242.4 | 25,600 |
| 110' | 30 | 79.0 | 126.0 | 1389,000 | 190' | 40 | 79.4 | 194.4 | 292,000 | 270' | 60 | 76.2 | 234.2 | 121,000 | 300' | 70 | 76.9 | 281.0 | 80,300 |
| | 35 | 76.5 | 124.8 | 1319,300 | | 45 | 77.8 | 193.3 | 254,200 | | 70 | 74.1 | 229.1 | 108,700 | | 90 | 74.8 | 278.4 | 69,300 |
| | 40 | 74.0 | 123.4 | 1270,100 | | 50 | 76.2 | 193.0 | 222,500 | | 80 | 71.5 | 226.7 | 89,800 | | 110 | 72.6 | 275.1 | 60,500 |
| | 45 | 71.1 | 121.8 | 1223,200 | | 60 | 72.9 | 190.3 | 140,300 | | 90 | 68.9 | 222.4 | 76,400 | | 130 | 70.5 | 272.1 | 52,500 |
| | 50 | 69.0 | 119.9 | 1186,300 | | 70 | 68.5 | 186.5 | 114,400 | | 100 | 66.1 | 218.1 | 66,000 | | 160 | 68.3 | 268.2 | 47,500 |
| | 60 | 61.7 | 115.2 | 1089,000 | | 80 | 64.6 | 182.3 | 95,500 | | 130 | 63.5 | 213.7 | 57,600 | | 190 | 66.1 | 264.0 | 40,100 |
| | 70 | 54.7 | 109.5 | 125,300 | | 90 | 60.8 | 178.1 | 81,800 | | 160 | 61.1 | 209.9 | 50,600 | | 230 | 63.9 | 259.2 | 35,800 |
| | 80 | 52.1 | 102.2 | 102,900 | | 100 | 56.8 | 173.6 | 70,800 | | 200 | 59.4 | 204.7 | 44,900 | | 260 | 61.5 | 254.0 | 31,800 |
| | 90 | 45.9 | 93.4 | 86,500 | | 130 | 52.5 | 166.4 | 62,600 | | 230 | 57.7 | 200.0 | 39,600 | | 300 | 59.2 | 248.2 | 28,400 |
| | 100 | 38.7 | 82.0 | 74,100 | | 160 | 48.1 | 158.2 | 54,600 | | 260 | 55.9 | 195.9 | 35,400 | | 360 | 57.9 | 242.4 | 25,600 |
| 120' | 30 | 79.8 | 136.2 | 1386,000 | 200' | 40 | 79.4 | 204.4 | 301,900 | 280' | 60 | 76.2 | 234.2 | 121,000 | 310' | 70 | 76.9 | 281.0 | 80,300 |
| | 35 | 77.8 | 135.1 | 1315,400 | | 45 | 77.8 | 203.3 | 264,200 | | 70 | 74.1 | 229.1 | 108,700 | | 90 | 74.8 | 278.4 | 69,300 |
| | 40 | 75.1 | 133.8 | 1266,300 | | 50 | 76.2 | 203.0 | 232,500 | | 80 | 71.5 | 226.7 | 89,800 | | 110 | 72.6 | 275.1 | 60,500 |
| | 45 | 73.0 | 132.3 | 1219,000 | | 60 | 72.9 | 200.3 | 140,300 | | 90 | 68.9 | 222.4 | 76,400 | | 130 | 70.5 | 272.1 | 52,500 |
| | 50 | 70.7 | 130.6 | 1182,100 | | 70 | 68.5 | 196.5 | 114,400 | | 100 | 66.1 | 218.1 | 66,000 | | 160 | 68.3 | 268.2 | 47,500 |
| | 60 | 65.9 | 126.4 | 1089,000 | | 80 | 64.6 | 192.3 | 95,500 | | 130 | 63.5 | 213.7 | 57,600 | | 190 | 66.1 | 264.0 | 40,100 |
| | 70 | 60.9 | 121.2 | 125,200 | | 90 | 60.8 | 188.1 | 81,800 | | 160 | 61.1 | 209.9 | 50,600 | | 230 | 63.9 | 259.2 | 35,800 |
| | 80 | 55.7 | 114.8 | 102,800 | | 100 | 56.8 | 183.6 | 70,800 | | 200 | 59.4 | 204.7 | 44,900 | | 260 | 61.5 | 254.0 | 31,800 |
| | 90 | 50.1 | 107.0 | 86,300 | | 130 | 52.5 | 175.4 | 62,600 | | 230 | 57.7 | 200.0 | 39,600 | | 300 | 59.2 | 248.2 | 28,400 |
| | 100 | 44.0 | 97.4 | 73,800 | | 160 | 48.1 | 167.2 | 54,600 | | 260 | 55.9 | 195.9 | 35,400 | | 360 | 57.9 | 242.4 | 25,600 |
| 130' | 30 | 79.8 | 141.4 | 1386,000 | 210' | 40 | 79.4 | 214.4 | 311,800 | 290' | 60 | 76.2 | 234.2 | 121,000 | 320' | 70 | 76.9 | 281.0 | 80,300 |
| | 35 | 77.8 | 140.2 | 1315,400 | | 45 | 77.8 | 213.3 | 274,200 | | 70 | 74.1 | 229.1 | 108,700 | | 90 | 74.8 | 278.4 | 69,300 |
| | 40 | 75.1 | 138.9 | 1266,300 | | 50 | 76.2 | 213.0 | 242,500 | | 80 | 71.5 | 226.7 | 89,800 | | 110 | 72.6 | 275.1 | 60,500 |
| | 45 | 73.0 | 137.3 | 1219,000 | | 60 | 72.9 | 210.3 | 140,300 | | 90 | 68.9 | 222.4 | 76,400 | | 130 | 70.5 | 272.1 | 52,500 |
| | 50 | 70.7 | 135.6 | 1182,100 | | 70 | 68.5 | 206.5 | 114,400 | | 100 | 66.1 | 218.1 | 66,000 | | 160 | 68.3 | 268.2 | 47,500 |
| | 60 | 65.9 | 131.4 | 1089,000 | | 80 | 64.6 | 202.3 | 95,500 | | 130 | 63.5 | 213.7 | 57,600 | | 190 | 66.1 | 264.0 | 40,100 |
| | 70 | 60.9 | 126.2 | 125,200 | | 90 | 60.8 | 198.1 | 81,800 | | 160 | 61.1 | 209 | | | | | | |

| BOOM | | | | CAPACITY | Calculations Below Apply to lbs. - See Jib Data | | | | | | | | | | | | | | | | | | | | | | | | | | |
|------------------------|-------------------|------|--------|----------|---|--------|----------|--------|---------------|--------|----------|--------|---------------|--------|----------|--------|-------|----------|------------------------|------|--------|------|--------|------|--------|------|--------|------|-------|------|-------|
| L | R | A | H | | BOOM PLUS JIB | | CAPACITY | | BOOM PLUS JIB | | CAPACITY | | BOOM PLUS JIB | | CAPACITY | | | | | | | | | | | | | | | | |
| 300' | 40' | 79.8 | 303.4' | *124,800 | Length | Radius | Length | Radius | Length | Radius | Length | Radius | Length | Radius | Length | Radius | | | | | | | | | | | | | | | |
| | 70' | 77.8 | 301.5' | *105,500 | | | | | | | | | | | | | | | | | | | | | | | | | | | |
| | 80' | 75.9 | 299.1' | 89,300 | | | | | | | | | | | | | | | | | | | | | | | | | | | |
| | 90' | 73.9 | 296.4' | 75,700 | | | | | | | | | | | | | | | | | | | | | | | | | | | |
| | 100' | 71.9 | 293.2' | 65,900 | | | | | | | | | | | | | | | | | | | | | | | | | | | |
| | 110' | 69.9 | 289.7' | 56,900 | | | | | | | | | | | | | | | | | | | | | | | | | | | |
| | 120' | 67.8 | 285.7' | 49,900 | | | | | | | | | | | | | | | | | | | | | | | | | | | |
| | 130' | 65.7 | 281.4' | *44,200 | | | | | | | | | | | | | | | | | | | | | | | | | | | |
| | 140' | 63.6 | 276.8' | *38,700 | | | | | | | | | | | | | | | | | | | | | | | | | | | |
| | 150' | 61.4 | 271.3' | *33,600 | | | | | | | | | | | | | | | | | | | | | | | | | | | |
| | 160' | 59.2 | 265.5' | *29,200 | | | | | | | | | | | | | | | | | | | | | | | | | | | |
| | 170' | 57.0 | 259.2' | *25,300 | | | | | | | | | | | | | | | | | | | | | | | | | | | |
| Midpoint Location 360' | 180' | 54.7 | 252.3' | *21,800 | Midpoint Location 160' | 180' | 19,800 | 190' | 17,200 | 200' | 15,000 | 210' | 12,400 | 220' | 10,500 | 230' | 8,600 | | | | | | | | | | | | | | |
| | 190' | 52.1 | 244.8' | *18,700 | | | | | | | | | | | | | | | | | | | | | | | | | | | |
| | 200' | 49.8 | 236.6' | *15,900 | | | | | | | | | | | | | | | | | | | | | | | | | | | |
| | 210' | 47.2 | 227.7' | *13,300 | | | | | | | | | | | | | | | | | | | | | | | | | | | |
| | 220' | 44.6 | 217.9' | *11,000 | | | | | | | | | | | | | | | | | | | | | | | | | | | |
| | 230' | 41.8 | 207.1' | *8,900 | | | | | | | | | | | | | | | | | | | | | | | | | | | |
| | 240' | 38.8 | 195.2' | *6,900 | | | | | | | | | | | | | | | | | | | | | | | | | | | |
| | 250' | 35.6 | 181.8' | *5,400 | | | | | | | | | | | | | | | | | | | | | | | | | | | |
| | 260' | 32.1 | 166.7' | *4,200 | | | | | | | | | | | | | | | | | | | | | | | | | | | |
| | 300' (130' + 40') | 80' | 78.2 | 311.8' | | | | | | | | | | | | | | *102,800 | Midpoint Location 160' | 180' | 17,200 | 190' | 15,200 | 200' | 13,000 | 210' | 10,800 | 220' | 9,000 | 230' | 7,500 |
| | | 90' | 76.3 | 309.5' | | | | | | | | | | | | | | *87,900 | | | | | | | | | | | | | |
| | | 100' | 74.4 | 306.8' | | | | | | | | | | | | | | 75,600 | | | | | | | | | | | | | |
| 110' | | 72.5 | 303.7' | 65,200 | | | | | | | | | | | | | | | | | | | | | | | | | | | |
| 120' | | 70.5 | 300.3' | 56,800 | | | | | | | | | | | | | | | | | | | | | | | | | | | |
| 130' | | 68.4 | 296.5' | 49,800 | | | | | | | | | | | | | | | | | | | | | | | | | | | |
| 140' | | 66.3 | 292.1' | 44,300 | | | | | | | | | | | | | | | | | | | | | | | | | | | |
| 150' | | 64.1 | 287.2' | *38,600 | | | | | | | | | | | | | | | | | | | | | | | | | | | |
| 160' | | 61.9 | 281.7' | *33,500 | | | | | | | | | | | | | | | | | | | | | | | | | | | |
| 170' | | 59.7 | 275.7' | *29,200 | | | | | | | | | | | | | | | | | | | | | | | | | | | |
| 180' | | 57.4 | 269.5' | *25,700 | | | | | | | | | | | | | | | | | | | | | | | | | | | |
| 190' | | 55.1 | 262.9' | *22,600 | | | | | | | | | | | | | | | | | | | | | | | | | | | |
| Midpoint Location 360' | 200' | 52.8 | 255.9' | *19,800 | Midpoint Location 160' | 210' | 15,000 | 220' | 12,400 | 230' | 10,500 | 240' | 8,600 | 250' | 7,000 | 260' | 5,600 | | | | | | | | | | | | | | |
| | 210' | 50.4 | 248.7' | *17,000 | | | | | | | | | | | | | | | | | | | | | | | | | | | |
| | 220' | 47.9 | 241.2' | *14,500 | | | | | | | | | | | | | | | | | | | | | | | | | | | |
| | 230' | 45.4 | 233.5' | *12,300 | | | | | | | | | | | | | | | | | | | | | | | | | | | |
| | 240' | 42.8 | 225.6' | *10,300 | | | | | | | | | | | | | | | | | | | | | | | | | | | |
| | 250' | 40.1 | 217.5' | *8,600 | | | | | | | | | | | | | | | | | | | | | | | | | | | |
| | 260' | 37.4 | 209.1' | *7,100 | | | | | | | | | | | | | | | | | | | | | | | | | | | |
| | 270' | 34.6 | 200.5' | *5,800 | | | | | | | | | | | | | | | | | | | | | | | | | | | |
| | 280' | 31.8 | 191.7' | *4,700 | | | | | | | | | | | | | | | | | | | | | | | | | | | |
| | 290' | 29.0 | 182.7' | *3,800 | | | | | | | | | | | | | | | | | | | | | | | | | | | |
| | 300' | 26.2 | 173.5' | *3,000 | | | | | | | | | | | | | | | | | | | | | | | | | | | |

THIS CHART IS BASED UPON:

- Capacities marked by * are based upon structural limitations of the machine, all others do not exceed 85% of tipping in the least stable direction.
- When the machine is equipped with standard outriggers, auxiliary outriggers (side, front, and rear), and bumper counterweight, full 360° operation of the crane is permitted. However, when operating the crane in the front sector, the load radius shall not be less than 17'. (Refer to diagram below.)
- When the machine is equipped with standard outriggers only and bumper counterweight, operation directly over the rear of the carrier 22 1/2° to either side of centerline of the carrier is permitted. (As defined in diagram below.)
- Machine to be leveled on a firm solid support; shock and side loads are to be prevented.
- When lifting a load, the outriggers must be fully extended horizontally, the outrigger floos down, and all ties use of the ground.
- All hook blocks, lifting tackle and jib attachments are considered a part of the load to be lifted.
- Exceeding these loads or altering the counterweight nullifies all warranties.
- Crane must be in fully reared position when handling booms or boom jibs combinations.
- When the machine is equipped with standard and auxiliary outriggers (side, front, and rear), the sector between the side auxiliary outrigger and the front standard outrigger is the least stable direction.
- Load ratings shown on this chart make no allowance for such factors as the effect of side loads, wind, ground conditions, and operating speeds. The operator therefore shall reduce load ratings to take these factors into account.



Capacities Per S.A.E. Code 1-755
 Class Designation Per U.S. Dept. of Commerce Standards.

- L = Boom Length
- R = Load Radius From Centerline of Rotation
- H = Height of Boom Point Slant Above Ground
- A = Boom Angle Above Horizontal.

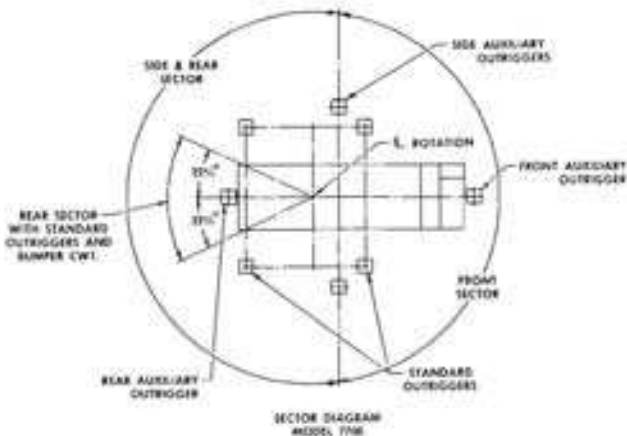
| BOOM | | | | CAPACITY | BOOM | | | | CAPACITY | BOOM | | | | CAPACITY | BOOM | | | | CAPACITY |
|-------|-------|------|------|----------|-------------------------|----------|-------|------|----------|-------|------|----------|-------|----------|-------------------------|------|------|----------|----------|
| L | R | A | H | | L | R | A | H | | L | R | A | H | | L | R | A | H | |
| 21.3M | 5.5 | 81.0 | 23.6 | *272,160 | 45.7M | 10.7 | 79.2 | 47.4 | *115,990 | 64.0M | 11.7 | 79.6 | 65.4 | *91,530 | 79.2M | 15.2 | 79.2 | 80.0 | *60,510 |
| | 8 | 79.6 | 25.3 | *280,700 | | 11 | 78.0 | 47.3 | *131,580 | | 12 | 78.4 | 65.2 | *80,600 | | 20 | 76.9 | 79.6 | *53,590 |
| | 9 | 74.1 | 22.9 | *207,720 | | 12 | 77.5 | 47.3 | *136,300 | | 18 | 75.6 | 64.4 | *62,420 | | 23 | 74.7 | 78.9 | *44,020 |
| | 10 | 71.2 | 22.6 | *183,170 | | 13 | 76.2 | 46.9 | *107,330 | | 21 | 72.6 | 63.6 | *50,400 | | 26 | 72.4 | 77.9 | *37,150 |
| | 11 | 65.4 | 21.7 | *144,660 | | 14 | 74.9 | 46.6 | *97,960 | | 24 | 70.0 | 62.1 | *43,860 | | 29 | 70.1 | 76.9 | *31,910 |
| | 12 | 59.2 | 20.6 | *119,150 | | 15 | 73.6 | 46.3 | *89,960 | | 27 | 67.1 | 61.3 | *37,670 | | 32 | 67.8 | 75.7 | *27,800 |
| | 13 | 52.6 | 19.1 | *97,340 | | 16 | 69.7 | 45.2 | *71,690 | | 30 | 64.1 | 59.9 | *30,770 | | 35 | 65.4 | 74.4 | *24,380 |
| | 16 | 43.2 | 16.2 | *74,260 | | 17 | 65.6 | 44.0 | *58,160 | | 31 | 61.7 | 58.3 | *26,880 | | 38 | 61.0 | 72.9 | *21,560 |
| | 21 | 25.9 | 11.3 | *58,720 | | 18 | 61.3 | 42.4 | *47,820 | | 36 | 58.0 | 56.5 | *23,640 | | 41 | 60.5 | 71.3 | *19,080 |
| | 21.3 | 21.6 | 10.5 | *57,060 | | 19 | 56.9 | 40.6 | *40,180 | | 39 | 54.7 | 54.5 | *20,980 | | 44 | 58.0 | 69.5 | *16,690 |
| 24.6M | 7.6 | 77.0 | 26.2 | *129,770 | 45.7M | 10.7 | 79.9 | 50.5 | *180,270 | 64.0M | 11.7 | 79.7 | 68.2 | *126,520 | 79.2M | 15.2 | 79.2 | 80.0 | *60,510 |
| | 9 | 73.7 | 25.8 | *181,130 | | 11 | 79.5 | 50.4 | *126,340 | | 12 | 78.4 | 68.1 | *110,770 | | 20 | 76.9 | 79.6 | *53,590 |
| | 11 | 68.6 | 25.1 | *144,150 | | 12 | 78.1 | 50.2 | *114,520 | | 18 | 75.6 | 67.4 | *78,070 | | 23 | 74.7 | 78.9 | *44,020 |
| | 13 | 63.4 | 24.3 | *119,080 | | 13 | 77.1 | 50.0 | *104,680 | | 21 | 72.6 | 66.6 | *62,420 | | 26 | 72.4 | 77.9 | *37,150 |
| | 15 | 58.0 | 22.9 | *97,300 | | 14 | 75.9 | 49.7 | *95,830 | | 24 | 70.0 | 65.8 | *50,400 | | 29 | 70.1 | 76.9 | *31,910 |
| | 16 | 49.0 | 20.6 | *74,270 | | 15 | 74.7 | 49.5 | *86,260 | | 27 | 67.1 | 65.0 | *43,860 | | 32 | 67.8 | 75.7 | *27,800 |
| | 21 | 38.5 | 17.3 | *58,680 | | 16 | 73.0 | 48.5 | *70,760 | | 30 | 64.1 | 64.2 | *37,670 | | 35 | 65.4 | 74.4 | *24,380 |
| | 24 | 24.4 | 12.3 | *48,140 | | 17 | 69.7 | 47.1 | *58,050 | | 31 | 61.7 | 62.8 | *30,770 | | 38 | 61.0 | 72.9 | *21,560 |
| | 24.4 | 21.9 | 11.1 | *46,860 | | 18 | 65.6 | 45.9 | *46,070 | | 36 | 58.0 | 61.3 | *26,880 | | 41 | 60.5 | 71.3 | *19,080 |
| | 27.6M | 7.6 | 78.5 | 29.3 | | *127,450 | 48.6M | 10.7 | 79.9 | | 50.5 | *180,270 | 67.1M | 11.7 | | 79.7 | 68.2 | *126,520 | 82.1M |
| 9 | | 75.5 | 29.0 | *181,050 | 11 | 79.5 | | 50.4 | *126,340 | 12 | 78.4 | 68.1 | | *110,770 | 20 | 76.9 | 79.6 | *53,590 | |
| 11 | | 71.1 | 28.3 | *142,840 | 12 | 78.1 | | 50.2 | *114,520 | 18 | 75.6 | 67.4 | | *78,070 | 23 | 74.7 | 78.9 | *44,020 | |
| 13 | | 66.6 | 27.5 | *117,660 | 13 | 77.1 | | 50.0 | *104,680 | 21 | 72.6 | 66.6 | | *62,420 | 26 | 72.4 | 77.9 | *37,150 | |
| 15 | | 61.9 | 26.3 | *97,300 | 14 | 75.9 | | 49.7 | *95,830 | 24 | 70.0 | 65.8 | | *50,400 | 29 | 70.1 | 76.9 | *31,910 | |
| 16 | | 54.4 | 24.5 | *74,270 | 15 | 74.7 | | 49.5 | *86,260 | 27 | 67.1 | 65.0 | | *43,860 | 32 | 67.8 | 75.7 | *27,800 | |
| 21 | | 46.1 | 21.9 | *58,630 | 16 | 73.0 | | 48.5 | *70,760 | 30 | 64.1 | 64.2 | | *37,670 | 35 | 65.4 | 74.4 | *24,380 | |
| 24 | | 36.1 | 18.4 | *48,090 | 17 | 69.7 | | 47.1 | *58,050 | 31 | 61.7 | 62.8 | | *30,770 | 38 | 61.0 | 72.9 | *21,560 | |
| 27 | | 23.1 | 12.8 | *40,420 | 18 | 65.6 | | 45.9 | *46,070 | 36 | 58.0 | 61.3 | | *26,880 | 41 | 60.5 | 71.3 | *19,080 | |
| 27.4 | | 20.6 | 11.6 | *39,320 | 19 | 61.3 | | 44.0 | *38,160 | 39 | 54.7 | 54.5 | | *20,980 | 44 | 58.0 | 69.5 | *16,690 | |
| 30.5M | 7.6 | 79.7 | 32.5 | *127,450 | 51.8M | 12.2 | 78.8 | 53.1 | *109,180 | 70.1M | 11.7 | 79.2 | 71.3 | *78,470 | 85.1M | 15.2 | 79.2 | 80.0 | *60,510 |
| | 9 | 77.0 | 32.3 | *181,050 | | 13 | 77.9 | 53.1 | *105,130 | | 12 | 78.4 | 71.2 | *74,020 | | 20 | 76.9 | 79.6 | *53,590 |
| | 11 | 71.1 | 31.6 | *141,030 | | 14 | 76.6 | 52.9 | *92,180 | | 18 | 75.1 | 70.5 | *67,930 | | 23 | 74.7 | 78.9 | *44,020 |
| | 13 | 67.3 | 30.8 | *115,490 | | 15 | 75.6 | 52.6 | *84,560 | | 21 | 72.6 | 69.6 | *50,400 | | 26 | 72.4 | 77.9 | *37,150 |
| | 15 | 63.0 | 29.0 | *97,300 | | 16 | 74.7 | 52.4 | *77,530 | | 24 | 70.0 | 68.8 | *43,860 | | 29 | 70.1 | 76.9 | *31,910 |
| | 16 | 58.5 | 28.2 | *74,130 | | 17 | 73.0 | 51.7 | *67,100 | | 27 | 67.1 | 68.0 | *37,670 | | 32 | 67.8 | 75.7 | *27,800 |
| | 21 | 51.5 | 26.0 | *58,990 | | 18 | 72.1 | 51.7 | *67,100 | | 30 | 64.1 | 67.1 | *30,770 | | 35 | 65.4 | 74.4 | *24,380 |
| | 24 | 43.7 | 23.2 | *48,050 | | 19 | 68.5 | 50.6 | *55,190 | | 31 | 61.7 | 66.2 | *27,070 | | 38 | 61.0 | 72.9 | *21,560 |
| | 27 | 34.5 | 19.3 | *40,380 | | 20 | 65.0 | 49.3 | *46,270 | | 36 | 58.0 | 65.2 | *23,170 | | 41 | 60.5 | 71.3 | *19,080 |
| | 30.5 | 31.9 | 18.1 | *33,990 | | 21 | 61.6 | 48.0 | *38,160 | | 39 | 54.7 | 64.3 | *20,070 | | 44 | 58.0 | 69.5 | *16,690 |
| 33.5M | 9.1 | 77.9 | 35.2 | *137,130 | Midpoint Location 33.5M | 12.2 | 78.8 | 53.1 | *109,180 | 70.1M | 11.7 | 79.2 | 71.3 | *78,470 | Midpoint Sag 25.4cm | 15.2 | 79.2 | 80.0 | *60,510 |
| | 11 | 74.7 | 34.8 | *190,860 | | 13 | 77.9 | 53.1 | *105,130 | | 12 | 78.4 | 71.2 | *74,020 | | 20 | 76.9 | 79.6 | *53,590 |
| | 13 | 71.1 | 34.7 | *154,750 | | 14 | 76.6 | 52.9 | *92,180 | | 18 | 75.1 | 70.5 | *67,930 | | 23 | 74.7 | 78.9 | *44,020 |
| | 15 | 67.4 | 33.3 | *126,060 | | 15 | 75.6 | 52.6 | *84,560 | | 21 | 72.6 | 69.6 | *50,400 | | 26 | 72.4 | 77.9 | *37,150 |
| | 16 | 61.7 | 31.8 | *97,020 | | 16 | 74.7 | 52.4 | *77,530 | | 24 | 70.0 | 68.8 | *43,860 | | 29 | 70.1 | 76.9 | *31,910 |
| | 21 | 55.6 | 29.9 | *80,540 | | 17 | 73.0 | 51.7 | *67,100 | | 27 | 67.1 | 68.0 | *37,670 | | 32 | 67.8 | 75.7 | *27,800 |
| | 24 | 49.0 | 27.5 | *65,000 | | 18 | 72.1 | 51.7 | *67,100 | | 30 | 64.1 | 67.1 | *30,770 | | 35 | 65.4 | 74.4 | *24,380 |
| | 27 | 43.6 | 24.4 | *50,130 | | 19 | 68.5 | 50.6 | *55,190 | | 31 | 61.7 | 66.2 | *27,070 | | 38 | 61.0 | 72.9 | *21,560 |
| | 30 | 33.0 | 20.3 | *34,540 | | 20 | 65.0 | 49.3 | *46,270 | | 36 | 58.0 | 65.2 | *23,170 | | 41 | 60.5 | 71.3 | *19,080 |
| | 33.5 | 31.3 | 14.2 | *29,580 | | 21 | 61.6 | 48.0 | *38,160 | | 39 | 54.7 | 64.3 | *20,070 | | 44 | 58.0 | 69.5 | *16,690 |
| 36.6M | 9.1 | 79.0 | 38.4 | *126,450 | 34.9M | 12.2 | 79.4 | 56.4 | *108,430 | 73.2M | 11.7 | 79.2 | 74.5 | *77,560 | Midpoint Location 48.8M | 15.2 | 79.2 | 80.0 | *60,510 |
| | 11 | 76.0 | 37.9 | *139,930 | | 13 | 78.6 | 56.2 | *100,030 | | 12 | 78.4 | 74.4 | *73,320 | | 20 | 76.9 | 79.6 | *53,590 |
| | 13 | 72.7 | 37.1 | *153,640 | | 14 | 77.5 | 56.0 | *90,360 | | 18 | 76.2 | 73.6 | *62,880 | | 23 | 74.7 | 78.9 | *44,020 |
| | 15 | 69.4 | 36.6 | *144,840 | | 15 | 76.4 | 55.8 | *82,560 | | 21 | 72.6 | 72.7 | *50,400 | | 26 | 72.4 | 77.9 | *37,150 |
| | 16 | 64.2 | 35.1 | *126,060 | | 16 | 75.2 | 55.0 | *74,170 | | 24 | 70.0 | 71.7 | *43,860 | | 29 | 70.1 | 76.9 | *31,910 |
| | 21 | 58.8 | 33.6 | *104,990 | | 17 | 74.2 | 54.9 | *66,170 | | 27 | 67.1 | 70.4 | *37,670 | | 32 | 67.8 | 75.7 | *27,800 |
| | 24 | 51.1 | 31.5 | *87,950 | | 18 | 73.2 | 54.6 | *58,400 | | 30 | 64.1 | 69.6 | *30,770 | | 35 | 65.4 | 74.4 | *24,380 |
| | 27 | 46.8 | 29.8 | *80,290 | | 19 | 72.3 | 54.2 | *50,890 | | 36 | 58.0 | 68.7 | *26,880 | | 41 | 60.5 | 71.3 | *19,080 |
| | 30 | 39.9 | 25.6 | *64,490 | | 20 | 71.4 | 53.9 | *43,170 | | 39 | 54.7 | 67.8 | *23,170 | | 44 | 58.0 | 69.5 | *16,690 |
| | 36.6 | 37.6 | 13.1 | *55,880 | | 21 | 67.5 | 52.6 | *35,460 | | 42 | 51.7 | 66.8 | *20,070 | | 47 | 56.0 | 67.8 | *16,690 |
| 39.6M | 9.1 | 79.0 | 41.3 | *125,080 | 57.9M | 12.2 | 79.4 | 59.4 | *106,680 | 73.2M | 11.7 | 79.2 | 74.5 | *77,560 | Midpoint Sag 25.4cm | 15.2 | 79.2 | 80.0 | *60,510 |
| | 11 | 77.3 | 41.1 | *138,220 | | 13 | 78.6 | 59.2 | *98,780 | | 12 | 78.4 | 74.4 | *73,320 | | 20 | 76.9 | 79.6 | *53,590 |
| | 13 | 74.1 | 40.5 | *152,050 | | 14 | 77.5 | 59.0 | *90,630 | | 18 | 76.2 | 73.6 | *62,880 | | 23 | 74.7 | 78.9 | *44,020 |
| | 15 | 71.0 | 39.9 | *166,000 | | 15 | 76.4 | 58.8 | *82,680 | | 21 | 72.6 | 72.7 | *50,400 | | 26 | 72.4 | 77.9 | *37,150 |
| | 16 | 66.1 | 38.6 | *148,680 | | 16 | 75.2 | 58.0 | *74,170 | | 24 | 70.0 | 71.7 | *43,860 | | 29 | 70.1 | 76.9 | *31,910 |
| | 21 | 61.5 | 37.1 | *130,550 | | 17 | 74.2 | 57.9 | *66,170 | | 27 | 67.1 | 70.4 | *37,670 | | 32 | 67.8 | 75.7 | *27,800 |
| | 24 | 56.4 | 35.2 | *114,910 | | 18 | 73.2 | 57.6 | *58,400 | | 30 | 64.1 | 69.6 | *30,770 | | 35 | 65.4 | 74.4 | *24,380 |
| | 27 | 50.9 | 32.9 | *100,210 | | 19 | 72.3 | 57.4 | *50,890 | | 36 | 58.0 | 68.7 | *26,880 | | 41 | 60.5 | 71.3 | *19,080 |
| | 30 | 45.0 | 30.2 | *84,170 | | 20 | 71.4 | 57.1 | *43,170 | | 39 | 54.7 | 67.8 | *23,170 | | 44 | 58.0 | 69.5 | *16,690 |
| | 39.6 | 43.3 | 14.4 | *70,090 | | 21 | 67.5 | 56.0 | *35,460 | | 4 | | | | | | | | |

| BOOM | | | | CAPACITY | CAPACITIES BELOW APPLY TO JIBS - SEE JIB DATA | | | | | | | | | | | | |
|-------|----------|------|-------|----------|---|----------|--------|---------------|----------|--------|---------------|----------|----------|---------------|----------|--|--|
| L | R | A | H | | BOOM PLUS JIB | | | BOOM PLUS JIB | | | BOOM PLUS JIB | | | BOOM PLUS JIB | | | |
| | | | | Length | Radius | CAPACITY | Length | Radius | CAPACITY | Length | Radius | CAPACITY | Length | Radius | CAPACITY | | |
| 91.6M | 18.1 | 79.8 | 92.5 | * 36,500 | 24.4 | 36,200 | 27.4 | 32,700 | 27.4 | 27.4 | 28,500 | 33.5 | 14,000 | | | | |
| | 20 | 78.7 | 92.1 | 31,100 | 26 | 34,900 | 29 | 29,900 | 29 | 29 | 28,300 | 35 | 14,000 | | | | |
| | 21 | 76.8 | 91.5 | 41,600 | 28 | 33,400 | 32 | 25,400 | 32 | 32 | 26,200 | 38 | 14,000 | | | | |
| | 26 | 74.8 | 90.7 | 17,000 | 29 | 30,400 | 33 | 25,400 | 33 | 33 | 26,200 | 38 | 14,000 | | | | |
| | 29 | 72.9 | 89.8 | 11,700 | 32 | 25,600 | 35 | 21,800 | 35 | 35 | 22,200 | 41 | 14,000 | | | | |
| | 32 | 70.9 | 88.8 | 27,600 | 35 | 22,000 | 38 | 18,800 | 38 | 38 | 19,200 | 44 | 14,000 | | | | |
| | 33 | 68.9 | 87.7 | 24,190 | 38 | 19,300 | 41 | 16,300 | 41 | 41 | 16,600 | 47 | 13,600 | | | | |
| | 38 | 66.8 | 86.4 | 23,100 | 41 | 16,600 | 44 | 14,300 | 44 | 44 | 14,400 | 50 | 12,600 | | | | |
| | 41 | 64.8 | 85.0 | 16,900 | 44 | 14,500 | 47 | 12,400 | 47 | 47 | 12,600 | 53 | 11,500 | | | | |
| | Midpoint | 44 | 62.7 | 83.5 | 16,500 | 47 | 12,700 | 50 | 10,900 | 50 | 50 | 11,000 | 56 | 9,800 | | | |
| | Location | 47 | 60.5 | 81.9 | 14,300 | 50 | 11,300 | 53 | 9,300 | 53 | 53 | 9,500 | Location | 59 | 8,600 | | |
| | 48.8M | 50 | 58.3 | 80.1 | 12,500 | 53 | 9,700 | 56 | 8,300 | 56 | 56 | 8,300 | Location | 62 | 7,600 | | |
| | 53 | 56.1 | 78.1 | 10,840 | 56 | 8,500 | 59 | 7,000 | 59 | 59 | 7,200 | 65 | 6,800 | | | | |
| | Midpoint | 56 | 53.8 | 76.0 | 9,340 | 59 | 7,400 | 62 | 6,300 | 62 | 62 | 6,300 | Midpoint | 68 | 5,800 | | |
| | Sag | 59 | 51.4 | 73.7 | 8,000 | 62 | 6,400 | 65 | 5,200 | 65 | 65 | 5,300 | Sag | 71 | 5,000 | | |
| | 43.2cm | 61 | 48.4 | 71.2 | 6,798 | 65 | 5,300 | 68 | 4,400 | 68 | 68 | 4,400 | 43.2cm | 74 | 4,200 | | |
| | 63 | 46.4 | 68.4 | 5,670 | 68 | 4,700 | 71 | 3,900 | 71 | 71 | 3,600 | 77 | 3,600 | | | | |
| | 68 | 43.7 | 65.4 | 4,680 | 71 | 3,900 | 74 | 2,800 | 74 | 74 | 2,800 | 79.2 | 2,800 | | | | |
| | 71 | 40.9 | 62.0 | 3,760 | 74 | 3,200 | 77.2 | 2,300 | 77.2 | 77.2 | 2,300 | | | | | | |
| | 74 | 37.9 | 58.1 | 2,900 | 77 | 2,500 | | | | | | | | | | | |
| 77 | 34.7 | 54.7 | 2,200 | 79.2 | 2,000 | | | | | | | | | | | | |
| 79.2 | 32.1 | 50.7 | 1,900 | | | | | | | | | | | | | | |

| | | | | | | | | | | | | | | | | | |
|-------|----------|------|-------|----------|--------|--------|--------|--------|--------|------|--------|----------|----------|-------|-------|--|--|
| 94.5M | 21.1 | 78.2 | 95.0 | * 46,600 | 24.4 | 36,200 | 27.4 | 32,700 | 27.4 | 27.4 | 28,500 | 33.5 | 12,200 | | | | |
| | 23 | 77.2 | 94.6 | 42,700 | 26 | 34,900 | 29 | 29,600 | 29 | 29 | 28,300 | 35 | 12,200 | | | | |
| | 26 | 75.3 | 93.8 | 36,780 | 28 | 33,100 | 32 | 25,300 | 32 | 32 | 26,200 | 38 | 12,200 | | | | |
| | 29 | 73.4 | 93.0 | 13,250 | 32 | 25,600 | 35 | 21,700 | 35 | 35 | 22,200 | 41 | 12,200 | | | | |
| | 32 | 71.5 | 92.0 | 27,500 | 35 | 22,000 | 38 | 18,700 | 38 | 38 | 19,200 | 44 | 12,200 | | | | |
| | 33 | 69.6 | 90.9 | 24,150 | 38 | 19,300 | 41 | 16,200 | 41 | 41 | 16,600 | 47 | 11,200 | | | | |
| | 38 | 67.6 | 89.7 | 21,130 | 41 | 16,600 | 44 | 14,200 | 44 | 44 | 14,400 | 50 | 10,200 | | | | |
| | 41 | 65.6 | 88.4 | 18,850 | 44 | 14,400 | 47 | 12,200 | 47 | 47 | 12,400 | 53 | 9,200 | | | | |
| | Midpoint | 44 | 63.6 | 87.0 | 16,420 | 47 | 12,600 | 50 | 10,600 | 50 | 50 | 10,700 | Location | 56 | 9,000 | | |
| | Location | 50 | 61.6 | 85.4 | 14,320 | 50 | 11,000 | 53 | 9,200 | 53 | 53 | 9,200 | Location | 59 | 8,200 | | |
| | 48.8M | 53 | 59.3 | 83.7 | 12,460 | 53 | 9,600 | 56 | 8,000 | 56 | 56 | 8,000 | Location | 62 | 7,200 | | |
| | 53 | 57.3 | 81.8 | 10,390 | 56 | 8,400 | 59 | 7,000 | 59 | 59 | 7,000 | Midpoint | 65 | 6,700 | | | |
| | Midpoint | 58 | 55.1 | 79.8 | 9,290 | 59 | 7,200 | 62 | 6,100 | 62 | 62 | 6,100 | Sag | 68 | 5,900 | | |
| | Location | 59 | 52.9 | 77.6 | 7,970 | 62 | 6,500 | 65 | 5,400 | 65 | 65 | 5,400 | 43.2cm | 71 | 5,100 | | |
| | 62 | 50.5 | 75.2 | 6,570 | 65 | 5,800 | 68 | 4,700 | 68 | 68 | 4,700 | 74 | 4,400 | | | | |
| | Midpoint | 65 | 48.1 | 72.6 | 5,630 | 68 | 4,700 | 71 | 3,900 | 71 | 71 | 3,900 | 77 | 3,700 | | | |
| | Sag | 68 | 45.6 | 69.7 | 4,638 | 71 | 3,900 | 74 | 3,100 | 74 | 74 | 3,100 | 79.2 | 2,800 | | | |
| | 43.2cm | 71 | 43.0 | 66.6 | 3,738 | 74 | 3,100 | 77 | 2,400 | 77 | 77 | 2,400 | | | | | |
| | 74 | 40.2 | 63.2 | 2,870 | 77 | 2,400 | | | | | | | | | | | |
| | 77 | 37.3 | 59.4 | 2,240 | 79.2 | 2,000 | | | | | | | | | | | |
| 79.2 | 35.0 | 56.3 | 1,860 | | | | | | | | | | | | | | |

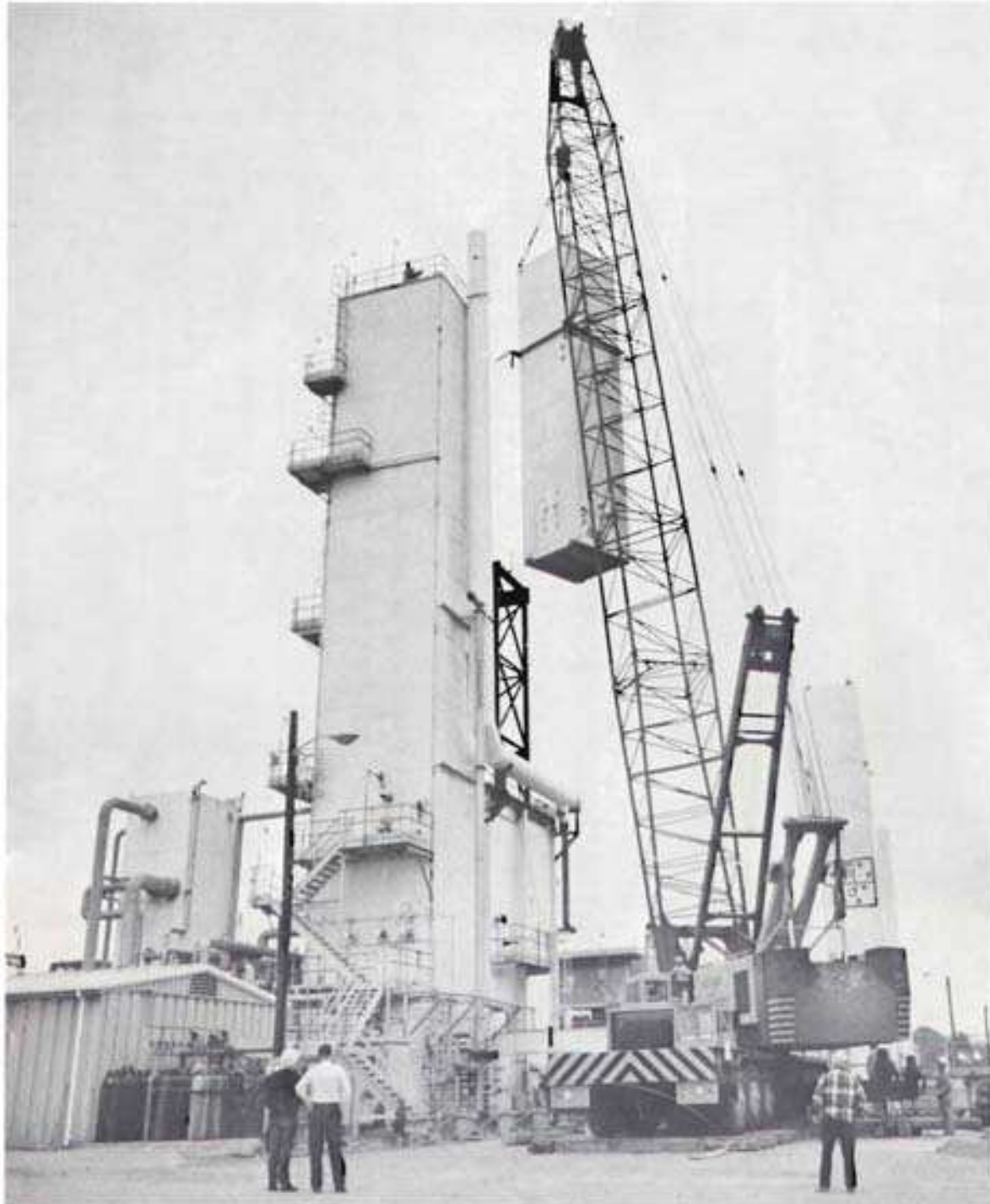
This Chart is Based Upon:

- Capacities marked by * are based upon structural limitations of the machine; all others do not exceed 85% of tipping to the least stable direction.
- When the machine is equipped with standard outriggers and front auxiliary outriggers, full 360° rotation of the crane is permitted. However, when operating the crane in the front sector, the load radius shall not be less than 30.6M (Refer to diagram below).
- Machine to be leveled on a firm solid support; shock and side loads are to be prevented.
- When lifting a load, the outriggers must be fully extended horizontally, the outrigger floos down, and all tops free of the ground.
- All hook blocks, lifting tackle and jib attachments are considered a part of the load to be lifted.
- Exceeding these loads or altering the counterweight facilities are warranties.
- Caution must be in fully rated provision when handling loads in boom plus jib combinations.
- When the machine is equipped with standard outriggers, over the side is the least stable direction.
- Load ratings shown on this chart make no allowance for such factors as the effect of side loads, wind, ground conditions, and operating speeds. The operator therefore shall reduce loads in order to take these factors into account.



Capacities Per S.A.E. Code J-70
 (Lift Designation Per U.S. Dept. of Commerce Standards)

- L = Boom Length (in Meters)
- R = Load Radius from Centerline of Rotation (in Meters)
- H = Height of Boom Pins from Above Ground (in Meters)
- A = Boom Angle Above Horizontal (in Degrees)



In accordance with our established policy of constantly improving our products, we reserve the right to change or modify our products or our product specifications at any time without notice.

CLARK Lima
Division

LIMA, OHIO 45802

Manufactured and Sold in Conformance with U.S. Department of Commerce
Commercial Standard CS90-58.

DISTRIBUTED BY