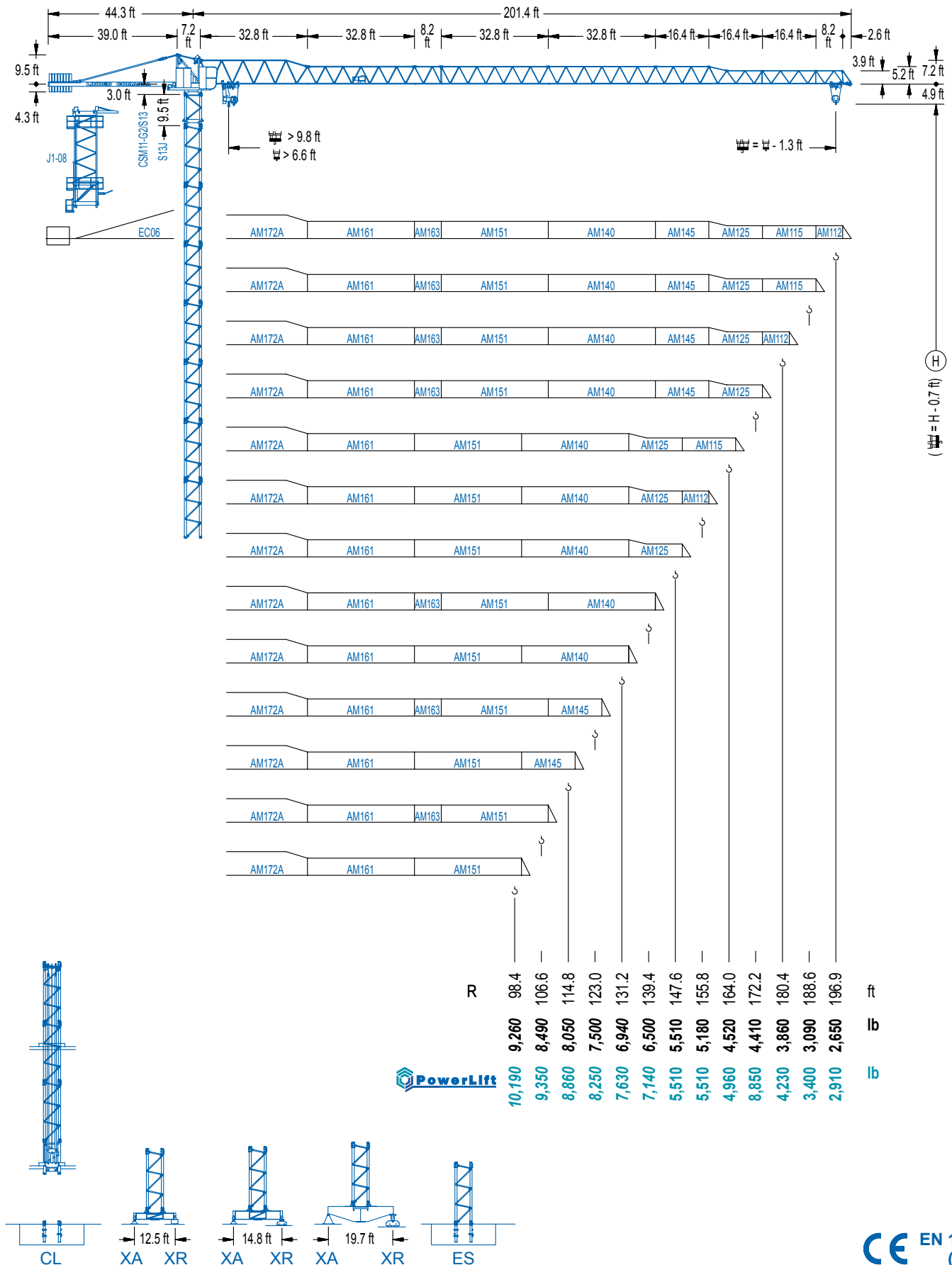


LC 1100

11 LC 132

11,020 lb



LC 1100

DIAGRAMA DE CARGAS

Load chart / Diagramme de charges / Lastdiagramm / Diagramma di carico / Диаграмма распределения нагрузки

R (ft)	II						I												
196.9	55.8	65.6	72.2	85.3	91.9	96.1	108.9	114.8	123.0	131.2	139.4	147.6	155.8	164.0	172.2	180.4	188.6	196.9	ft
	11,020	9,020	8,000	6,460	5,840	5,510	5,510	5,180	4,760	4,410	4,100	3,810	3,570	3,350	3,150	2,950	2,800	2,650	lb
188.6	59.7	65.6	72.2	85.3	91.9	98.4	103.3	117.5	123.0	131.2	139.4	147.6	155.8	164.0	172.2	180.4	188.6	ft	
	11,020	9,830	8,750	7,080	6,440	5,890	5,510	5,510	5,200	4,830	4,500	4,190	3,920	3,680	3,460	3,260	3,090	lb	
180.4	67.9	72.2	85.3	91.9	98.4	105.0	114.8	117.5	133.9	139.4	147.6	155.8	164.0	172.2	180.4	ft			
	11,020	10,230	8,330	7,610	6,970	6,390	5,690	5,510	5,510	5,270	4,920	4,610	4,340	4,080	3,860	lb			
172.2	72.2	85.3	91.9	98.4	105.0	114.8	121.4	125.0	142.7	147.6	155.8	164.0	172.2	ft					
	11,020	8,990	8,200	7,520	6,920	6,170	5,730	5,510	5,510	5,290	4,960	4,670	4,410	lb					
164.0	70.2	85.3	91.9	98.4	105.0	114.8	121.4	128.0	138.8	139.4	147.6	155.8	164.0	ft					
	11,020	8,690	7,910	7,250	6,680	5,930	5,510	5,510	5,110	4,810	4,520	lb							
155.8	74.5	85.3	91.9	98.4	105.0	114.8	121.4	128.0	129.3	148.0	155.8	ft							
	11,020	9,350	8,530	7,830	7,230	6,440	5,970	5,580	5,510	5,510	5,180	lb							
147.6	74.1	85.3	91.9	98.4	105.0	114.8	121.4	128.0	128.9	147.6	ft								
	11,020	9,330	8,510	7,800	7,210	6,420	5,970	5,560	5,510	5,510	lb								
139.4	89.2	98.4	105.0	114.8	121.4	129.9	ft												
131.2	88.6	91.9	98.4	105.0	114.8	121.7	ft												
123.0	87.6	91.9	98.4	105.0	113.5	ft													
114.8	85.0	91.9	98.4	105.3	ft														
106.6	84.0	91.9	97.1	ft															
98.4	11,020	9,900	9,260	lb															

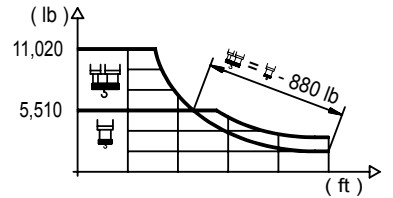
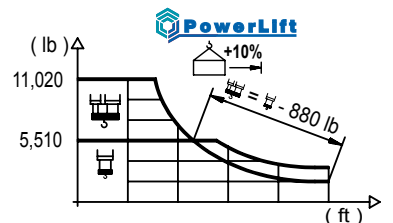


DIAGRAMA DE CARGAS POWERLIFT

Load chart PowerLift / Diagramme de charges PowerLift / Lastdiagramm PowerLift / Diagramma di carico PowerLift / Диаграмма распределения нагрузки PowerLift

R (ft)	II						I												
196.9	58.4	72.2	78.7	85.3	91.9	98.4	100.7	117.1	123.0	131.2	139.4	147.6	155.8	164.0	172.2	180.4	188.6	196.9	ft
	11,020	8,490	7,610	6,880	6,240	5,690	5,510	5,510	5,200	4,810	4,480	4,170	3,900	3,660	3,440	3,260	3,090	2,910	lb
188.6	63.0	72.2	78.7	85.3	91.9	98.4	106.6	108.9	126.3	131.2	139.4	147.6	155.8	164.0	172.2	180.4	188.6	ft	
	11,020	9,350	8,380	7,580	6,900	6,310	5,670	5,510	5,510	5,270	4,920	4,590	4,300	4,030	3,790	3,590	3,400	lb	
180.4	71.9	78.7	85.3	91.9	98.4	106.6	114.8	123.0	124.7	144.4	147.6	155.8	164.0	172.2	180.4	ft			
	11,020	9,880	8,950	8,160	7,500	6,770	6,130	5,600	5,510	5,510	5,380	5,050	4,740	4,480	4,230	lb			
172.2	76.8	78.7	85.3	91.9	98.4	106.6	114.8	123.0	131.2	133.2	154.5	155.8	164.0	172.2	ft				
	11,020	10,690	9,700	8,860	8,130	7,360	6,700	6,130	5,620	5,510	5,510	5,470	5,140	4,850	lb				
164.0	74.8	78.7	85.3	91.9	98.4	106.6	114.8	123.0	128.0	129.6	149.9	155.8	164.0	ft					
	11,020	10,360	9,410	8,600	7,890	7,120	6,480	5,910	5,620	5,510	5,510	5,270	4,960	lb					
155.8	79.4	85.3	91.9	98.4	106.6	114.8	123.0	131.2	134.5	137.8	155.8	ft							
	11,020	10,120	9,260	8,510	7,690	7,010	6,420	5,890	5,710	5,510	5,510	lb							
147.6	79.7	85.3	91.9	98.4	106.6	114.8	123.0	131.2	138.1	147.6	ft								
	11,020	10,140	9,260	8,510	7,720	7,010	6,420	5,890	5,510	5,510	lb								
139.4	96.8	106.6	114.8	123.0	131.2	138.1	ft												
131.2	96.1	106.6	114.8	123.0	129.9	ft													
123.0	95.8	106.6	114.8	121.7	ft														
	11,020	9,700	8,860	8,250	lb														
114.8	94.8	98.4	106.6	113.5	ft														
	11,020	10,540	9,570	8,860	lb														
106.6	91.9	98.4	105.3	ft															
	11,020	10,140	9,350	lb															
98.4	90.9	97.1	ft																
	11,020	10,190	lb																



MECANISMOS


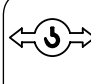

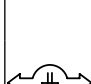
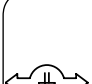
Mechanisms / Mécanismes / Antriebe / Meccanismi / Механизмы

ES3-18-12		29 hp		
1.080 ft				
	ft/min	I	II	III
	lb	5,510	5,510	2,860
	ft/min	I	II	III
	lb	11,020	11,020	5,730

EFU2-18-12		24 hp		
1.080 ft				
	ft/min	131	164	197
	lb	5,510	4,410	2,420
	ft/min	66	82	98
	lb	11,020	8,820	4,850

MECANISMOS

Mechanisms / Mécanismes / Antriebe / Meccanismi / Механизмы

	CS2-1.9 3 hp		CFU-2.2 3 hp *		GFU-5.5 2x 7.4 hp		TS2-5.5 2x 40 ft-lb	TRA-7.5 2x 55 ft-lb		TRA-7.5VC 2x 55 ft-lb *	
63 ft/min 189 ft/min		0 ⇔ 262 ft/min		0 ⇔ 0,7 rpm		0 ⇔ 78 ft/min		0 ⇔ 78 ft/min		5XR71	
1XR31 3XR51						1XR31 3XR51		5XR71			

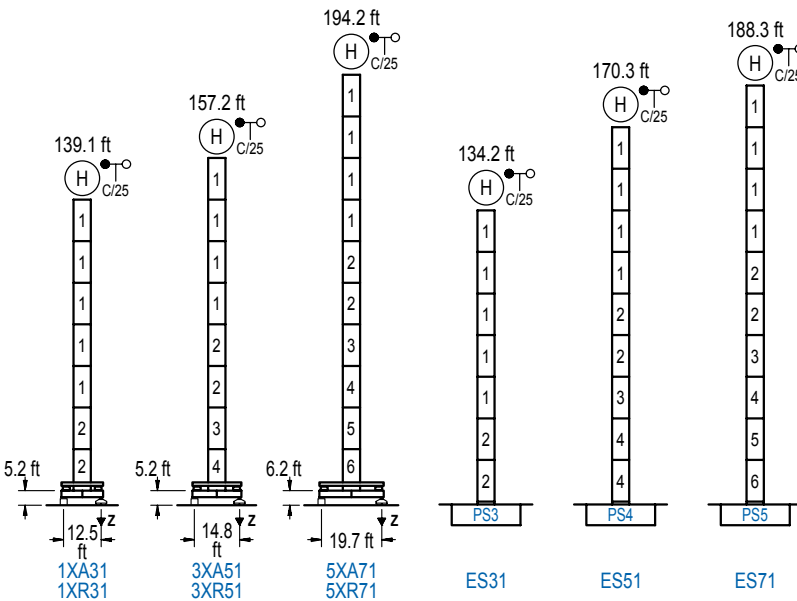
POTENCIA / POWER / PUISSANCE / LEISTUNG / POTENZA / МОЩНОСТЬ				Tensión de alimentación / Operating voltage / Tension de service / Betriebsspannung / Tensione di alimentazione / Напряжение источника питания	Generador / Generator / Générateur / Generator / Generatore / Генератор
Elevación / Hoist / Levage / Hub / Sollevamento / Тип механизма (подъем)	Carro / Trolley / Chariot / Laufkatze / Carrelo / Грузовая тележка	Giro / Slewing / Rotation / Drehbewegung / Rotazione / Поворот	Traslación / Travel / Translation / Verfahrbewegung / Traslazione / Ход		
ES3-18-12	CS2-1.9	(2x) GFU-5.5	(2x) TS2-5.5 (2x) TRA-7.5	480 V 3ph 60 Hz	115 kVA
EFU2-18-12	CFU-2.2				65 kVA

Optional / Optional / En option / Kaufoption / Opzionale / Опционально
*

ALTURAS BAJO GANCHO

Heights under hook / Hauteurs sous crochet / Hakenhöhen / Altezza sotto gancio / Высота под крюком

∅ 5.2 ft

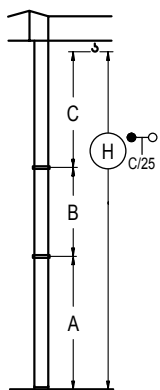


n°	Ref.	∅	h
1	S12	5.2	18.0
2	S13	5.2	18.0
3	TS14	5.2	18.0
4	S14	5.2	18.0
5	TS15	5.2	18.0
6	S15	5.2	18.0

Z máx.	En servicio / In operation / En service / In Betrieb / In servizio / При работе	1XR31.. 152 kip 3XR51.. 146 kip 5XR71.. 132 kip
	Fuera de servicio / Out of service / Hors service / Ausser Betrieb / Fuori servizio / В стационарном состоянии	1XR31.. 185 kip 3XR51.. 203 kip 5XR71.. 198 kip

GRÚA ARRIOSTRADA

Braced crane / Grue à entretoisement / Abgespannter Kran / Gru ancorata / Нарастиваемый кран



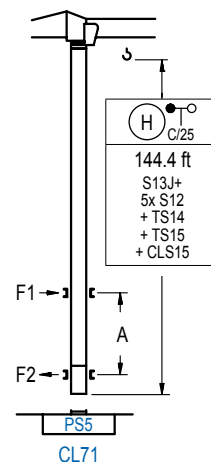
	1XA31	3XA51	5XA71
A max	95.5	113.5	150.6
* B max	-	72.2	-
* C max	115.8	115.8	115.8
H max	211.3	283.5	229.3

	ES31	ES51	ES71
A max	90.6	126.6	144.7
* B max	-	72.2	-
* C max	115.8	115.8	115.8
H max	206.4	278.5	242.5

* Con S13; * With S13; * Avec S13; * Mit S13;
* Con S13; * C S13

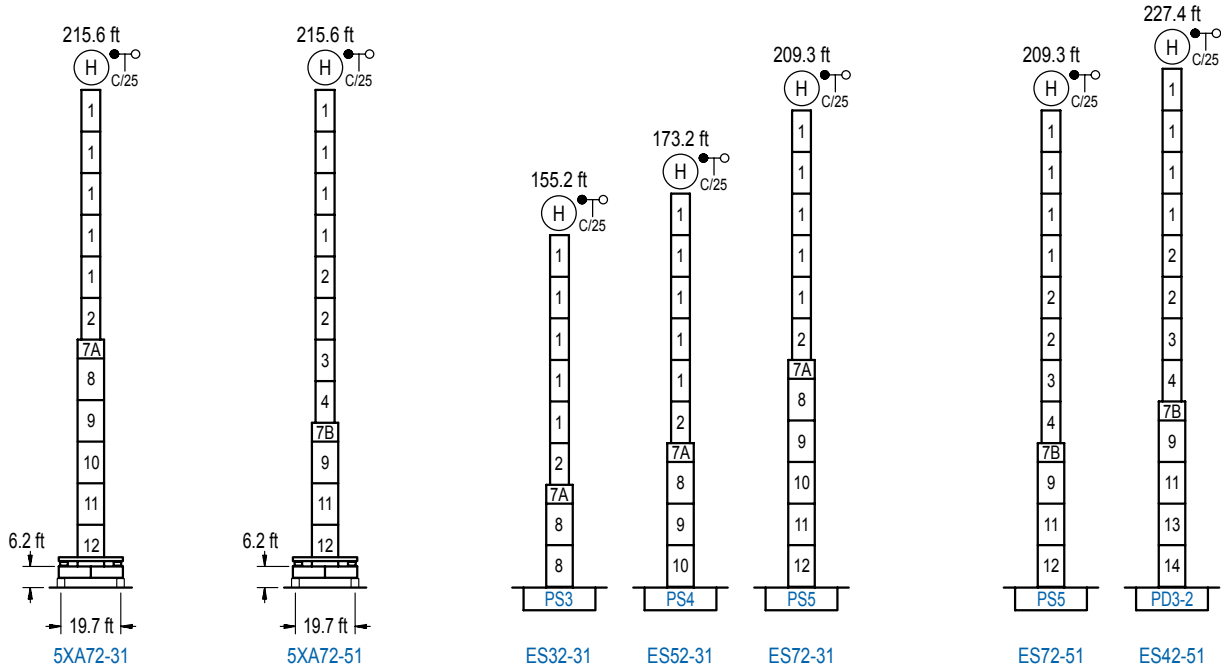
GRÚA TREPADORA

Internal climbing crane / Grue avec cage de télescopage intérieure / Kran mit klettern im Gebäude / Gru in rampante in cavedio / Кран с самоподъемом



n°	Ref.	∅	h
1	S12	5.2	18.0
3	TS14	5.2	18.0
5	TS15	5.2	18.0
23	CLS15	5.2	10.2

Otras zonas de viento, alturas superiores, arriostramientos o trepado interno consultar / Other wind zones, additional hook heights, tie frames or internal climbing on request / Autres zones de vent, des hauteurs supplémentaires, entretoisements ou grues avec cage de télescopage intérieure, sur demande / Andere Windzonen, weitere Hakenhöhen, Abspannungen zum Gebäude oder Klettern im Gebäude auf Anfrage / Per zone con velocità del vento particolari, altezze superiori, ancoraggi o rampante in cavedio, consultare il fabbricante / При других ветренных зонах, при большой высоте, привязках к зданию или наращивании крана внутри здания проконсультируйтесь с нами



n°	Ref.	∅	h	n°	Ref.	∅	h	n°	Ref.	∅	h
1	S12	5.2	18.0	6	S15	5.2	18.0	10	S24	6.6	18.0
2	S13	5.2	18.0	7A	TMS23/PMS3	6.6	3.3	11	TS25	6.6	18.0
3	TS14	5.2	18.0	7B	TMS23/PMS4	6.6	3.3	12	S25	6.6	18.0
4	S14	5.2	18.0	8	S23	6.6	18.0	13	TD23A	6.6	18.0
5	TS15	5.2	18.0	9	TS24	6.6	18.0	14	D23	6.6	18.0

Otras zonas de viento o alturas superiores consultar / Other wind zones or additional hook heights on request / Autres zones de vent ou des hauteurs supplémentaires sur demande / Andere Windzonen oder weitere Hakenhöhen auf Anfrage / Per zone con velocità del vento particolari o altezze superiori consultare il fabbricante / При других ветренных зонах о при большой высоте проконсультируйтесь с нами