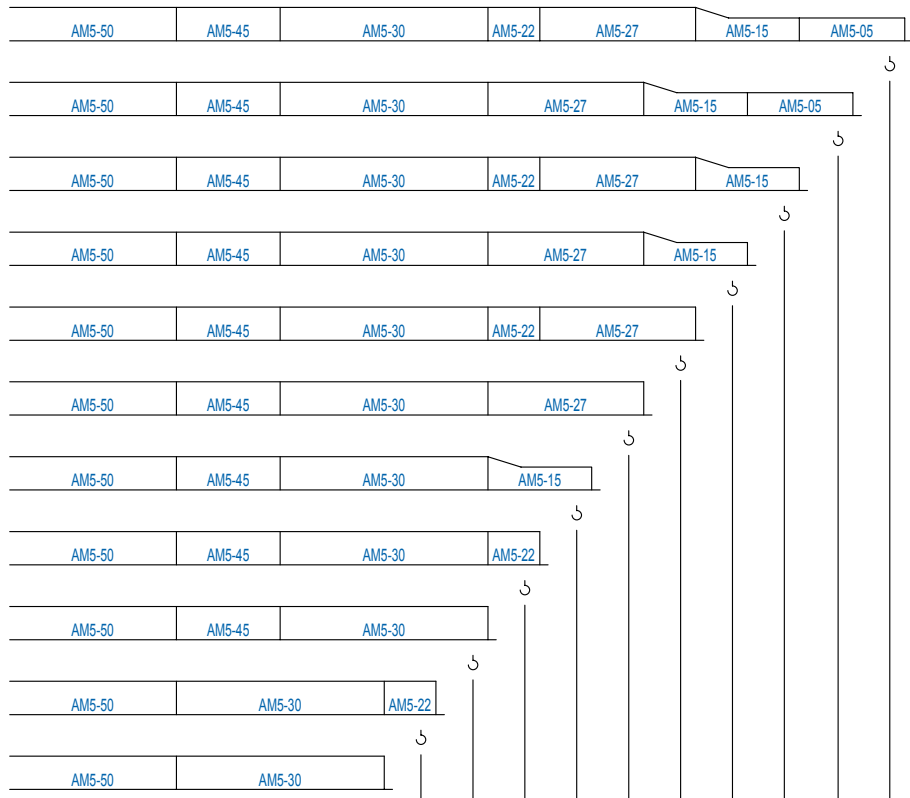
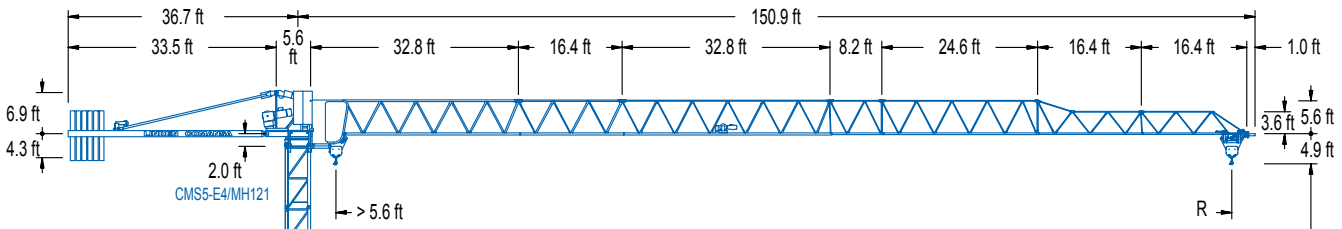


LC 500

5 LC 4510

11,020 lb

LC 500



\* L

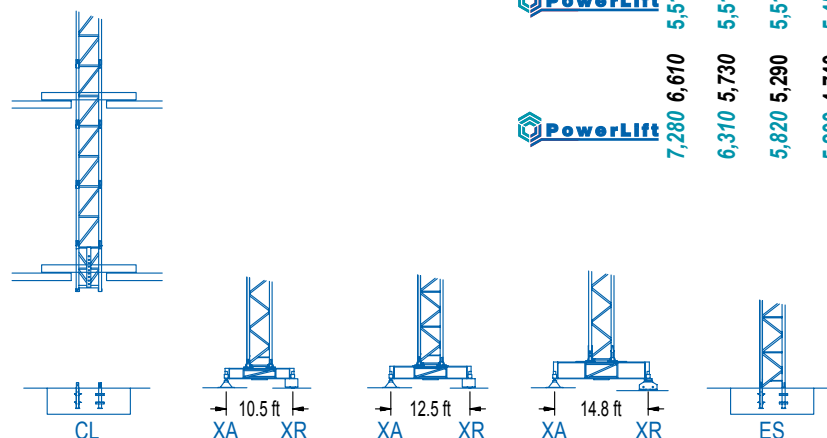
AM5-50 = AM5-55T + AM5-55D  
 AM5-30 = AM5-35T + AM5-35D

\* H (U) = H + 3.6 ft

MJ12A  
 MJ12  
 JT1  
 P11  
 GH

1 Montaje inicial / Initial erection  
 Montage initial / Erstmontage  
 Montaggio iniziale  
 Первоначальный монтаж

R	65.6	73.8	82.0	90.2	98.4	106.6	114.8	123.0	131.2	139.4	147.6	ft
PowerLift	5,510	5,510	5,510	5,510	4,850	4,370	3,880	3,640	3,020	2,670	2,430	lb
PowerLift	7,280	6,370	5,820	5,200	4,610	4,120	3,640	3,400	2,760	2,430	2,180	lb
	6,610	5,730	5,290	4,740	4,190	3,750	3,310	3,090	2,540	2,200	1,980	lb

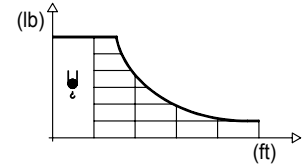


CE EN 14439 (C/25)

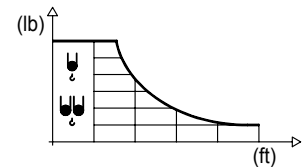
## DIAGRAMA DE CARGAS

Load chart / Diagramme de charges / Lastdiagramm / Diagramma di carico / Диаграмма распределения нагрузки

R (ft)	ψ	RC <sub>max</sub> (ft)	32.8	41.0	49.2	57.4	65.6	73.8	82.0	90.2	98.4	106.6	114.8	123.0	131.2	139.4	147.6	↔ (ft) ↓ (lb)
147.6		67.6					5,510	4,980	4,410	3,970	3,570	3,260	3,000	2,760	2,540	2,360	2,200	
139.4		68.9					5,510	5,090	4,520	4,060	3,660	3,350	3,060	2,820	2,600	2,430		
131.2		71.9					5,510	5,360	4,760	4,280	3,860	3,530	3,220	2,980	2,760			
123.0		78.7						5,510	5,250	4,720	4,280	3,900	3,660	3,310				
114.8		77.8						5,510	5,180	4,650	4,210	3,840	3,530					
106.6		79.7						5,510	5,340	4,810	4,340	3,970						
98.4		80.7						5,510	5,420	4,870	4,410							
90.2		82.0							5,510	4,960								
82.0		82.0							5,510									
73.8		73.8						5,510										
65.6		65.6					5,510											



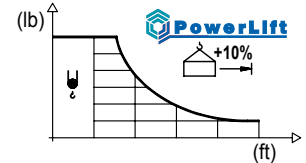
R (ft)	ψ/ψ <sub>ψ</sub>	RC <sub>max</sub> (ft)	32.8	41.0	49.2	57.4	65.6	73.8	82.0	90.2	98.4	106.6	114.8	123.0	131.2	139.4	147.6	↔ (ft) ↓ (lb)
147.6		36.4	11,020	9,610	7,780	6,500	5,580	4,850	4,250	3,790	3,400	3,060	2,800	2,560	2,340	2,160	1,980	
139.4		37.1	11,020	9,790	7,960	6,660	5,690	4,940	4,370	3,880	3,480	3,150	2,870	2,600	2,400	2,200		
131.2		38.4	11,020	10,270	8,330	6,990	5,970	5,200	4,590	4,080	3,660	3,310	3,020	2,760	2,540			
123.0		42.0	11,020	9,170	7,690	6,590	5,750	5,070	4,520	4,080	3,700	3,370	3,090					
114.8		41.3	11,020	9,020	7,560	6,480	5,640	4,980	4,450	4,010	3,640	3,310						
106.6		42.3	11,020	9,280	7,780	6,680	5,820	5,140	4,590	4,140	3,750							
98.4		42.7	11,020	9,410	7,890	6,770	5,910	5,200	4,650	4,190								
90.2		43.3	11,020	9,570	8,020	6,880	6,000	5,310	4,740									
82.0		43.3	11,020	9,550	8,000	6,860	6,000	5,290										
73.8		41.7	11,020	9,150	7,670	6,570	5,730											
65.6		42.0	11,020	9,190	7,720	6,610												



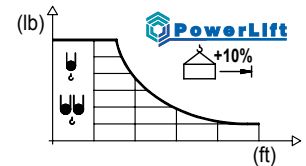
## DIAGRAMA DE CARGAS POWERLIFT

Load chart PowerLift / Diagramme de charges PowerLift / Lastdiagramm PowerLift / Diagramma di carico PowerLift / Диаграмма распределения нагрузки PowerLift

R (ft)	ψ	RC <sub>max</sub> (ft)	32.8	41.0	49.2	57.4	65.6	73.8	82.0	90.2	98.4	106.6	114.8	123.0	131.2	139.4	147.6	↔ (ft) ↓ (lb)
147.6		72.8					5,510	5,420	4,830	4,320	3,920	3,570	3,260	3,020	2,800	2,600	2,430	
139.4		74.4						5,510	4,940	4,430	4,010	3,660	3,350	3,090	2,870	2,670		
131.2		77.7						5,510	5,180	4,650	4,210	3,840	3,530	3,260	3,020			
123.0		85.3							5,510	5,180	4,700	4,280	3,950	3,640				
114.8		84.2							5,510	5,090	4,630	4,230	3,880					
106.6		86.7							5,510	5,270	4,780	4,370						
98.4		87.8							5,510	5,360	4,850							
90.2		89.2							5,510	5,450								
82.0		82.0							5,510									
73.8		73.8						5,510										
65.6		65.6					5,510											



R (ft)	ψ/ψ <sub>ψ</sub>	RC <sub>max</sub> (ft)	32.8	41.0	49.2	57.4	65.6	73.8	82.0	90.2	98.4	106.6	114.8	123.0	131.2	139.4	147.6	↔ (ft) ↓ (lb)
147.6		38.8	11,020	10,340	8,400	7,030	6,020	5,250	4,630	4,120	3,700	3,350	3,040	2,780	2,560	2,360	2,180	
139.4		39.6	11,020	10,580	8,600	7,190	6,170	5,380	4,740	4,210	3,790	3,440	3,130	2,870	2,620	2,430		
131.2		41.2	11,020	8,990	7,540	6,460	5,640	4,980	4,430	3,990	3,620	3,310	3,020	2,780				
123.0		45.0	11,020	9,960	8,380	7,190	6,260	5,560	4,960	4,450	4,060	3,700	3,400					
114.8		44.4	11,020	9,810	8,250	7,080	6,170	5,470	4,870	4,390	3,990	3,640						
106.6		45.6	11,020	10,120	8,510	7,300	6,370	5,640	5,030	4,540	4,120							
98.4		46.2	11,020	10,270	8,620	7,410	6,460	5,710	5,110	4,610								
90.2		46.9	11,020	10,430	8,770	7,540	6,570	5,820	5,200									
82.0		46.9	11,020	10,430	8,800	7,540	6,570	5,820										
73.8		45.2	11,020	10,030	8,420	7,230	6,310											
65.6		45.5	11,020	10,100	8,470	7,280												



## MECANISMOS

Mechanisms / Mécanismes / Antriebe / Meccanismi / Механизмы

ES3-18-12		29 hp		
ft/min	I	32	126	252
	II			
lb	I	5,510	5,510	2,870
	II			
ft/min	I	16	63	126
	II			
lb	I	11,020	11,020	5,730
	II			

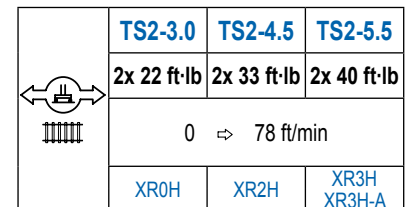
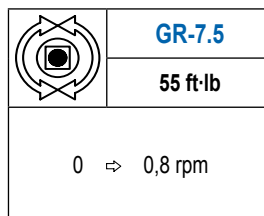
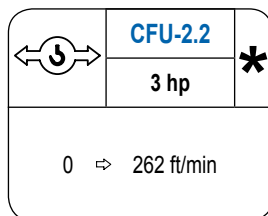
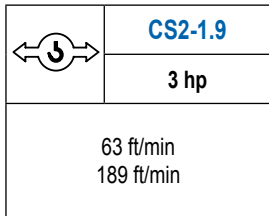
ES3-13-12		21 hp		
ft/min	I	24	94	189
	II			
lb	I	5,510	2,500	2,870
	II			
ft/min	I	12	47	94
	II			
lb	I	11,020	11,020	5,730
	II			

EFU2-18-12		24 hp		
ft/min	I	138	164	197
	II			
lb	I	5,510	4,410	3,310
	II			
ft/min	I	68	82	121
	II			
lb	I	11,020	8,820	6,610
	II			

EFU2-11-12		15 hp		
ft/min	I	79	88	131
	II			
lb	I	5,510	4,410	3,310
	II			
ft/min	I	39	44	66
	II			
lb	I	11,020	8,820	6,610
	II			

## MECANISMOS

Mechanisms / Mécanismes / Antriebe / Meccanismi / Механизмы



POTENCIA / POWER / PUISSANCE / LEISTUNG / POTENZA / МОЩНОСТЬ				Tensión de alimentación / Operating voltage / Tension de service / Betriebsspannung / Tensione di alimentazione / Напряжение источника питания	Generador / Generator / Générateur / Generator / Генератор
Elevación / Hoist / Levage / Hub / Sollevamento / Тип механизма (подъем)	Carro / Trolley / Chariot / Laufkatze / Carrello / Грузовая тележка	Giro / Slewing / Rotation / Drehbewegung / Rotazione / Поворот	Traslación / Travel / Translation / Verfahrbewegung / Traslazione / Ход	480 V 3ph 60 Hz	107 kVA 90 kVA 60 kVA 48 kVA
ES3-18-12	CS2-1.9	GR-7.5	(2x) TS2-3.0		
ES3-13-12			(2x) TS2-4.5		
EFU2-18-12	CFU-2.2		(2x) TS2-5.5		
EFU2-11-12					

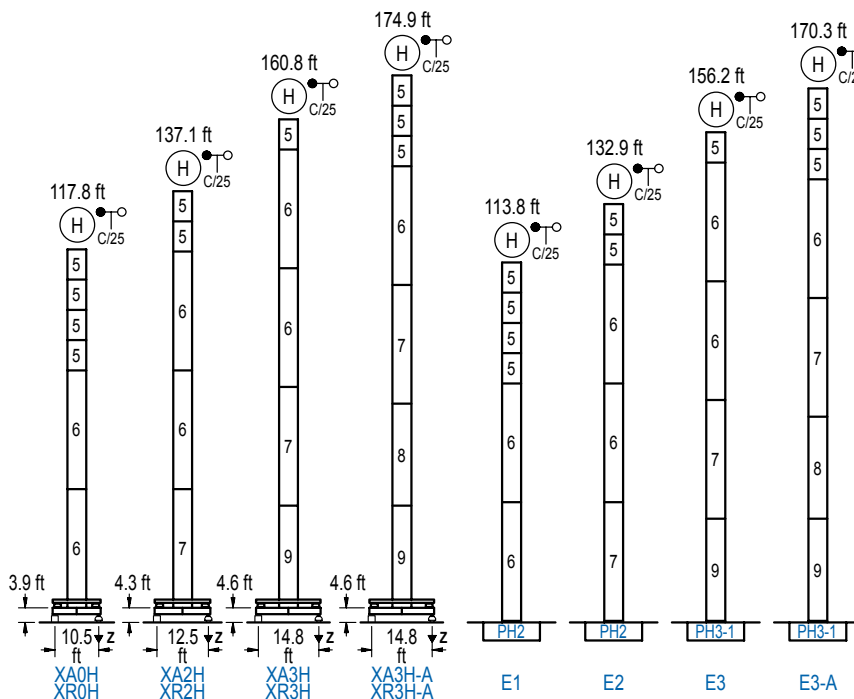
Opcional / Optional / En option / Kaufoption / Opzionale / Опционально

**\***

## ALTURAS BAJO GANCHO

Heights under hook / Hauteurs sous crochet / Hakenhöhen / Altezza sotto gancio / Высота под крюком

∅ 3.9 ft



n°	Ref.	∅	h
5	MH121	3.9	9.8
6	MH124-1	3.9	38.7
7	MH124A	3.9	38.7
8	MT123A	3.9	33.1
9	MT123	3.9	33.1

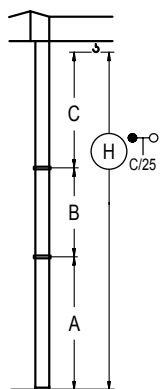
MH124-1 = 4x MH121 - 0.7 ft

	H = H + 0.7 ft
	H = H
	H = H
	H = H - 0.7 ft

Z máx.	En servicio / In operation / En service / In Betrieb / In servizio / При работе	XR0H..... 95 kip XR2H..... 93 kip XR3H..... 101 kip XR3H-A.. 112 kip
	Fuera de servicio / Out of service / Hors service / Ausser Betrieb / Fuori servizio / В стационарном состоянии	XR0H..... 110 kip XR2H..... 137 kip XR3H..... 159 kip XR3H-A.. 187 kip

## GRÚA ARRIOSTRADA

Braced crane / Grue à entretoisement / Abgespannter Kran / Gru ancorata / Нарастиваемый кран



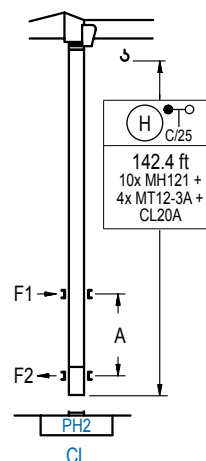
	XA0H	XA2H	XA3H	XA3H-A
A max	101.0	121.1	144.7	158.1
B max	- 68.9	- 68.9	- 68.9	- 68.9
C max	89.2	89.2	89.2	89.2
H max	190.3	259.2	209.6	278.5
	233.9	302.8	247.4	316.3

	E1	E2	E3	E3-A
A max	97.1	116.8	140.1	153.5
B max	- 68.9	- 68.9	- 68.9	- 68.9
C max	89.2	89.2	89.2	89.2
H max	186.4	255.2	206.0	247.9
	229.3	298.2	242.8	311.7

## GRÚA TREPADORA

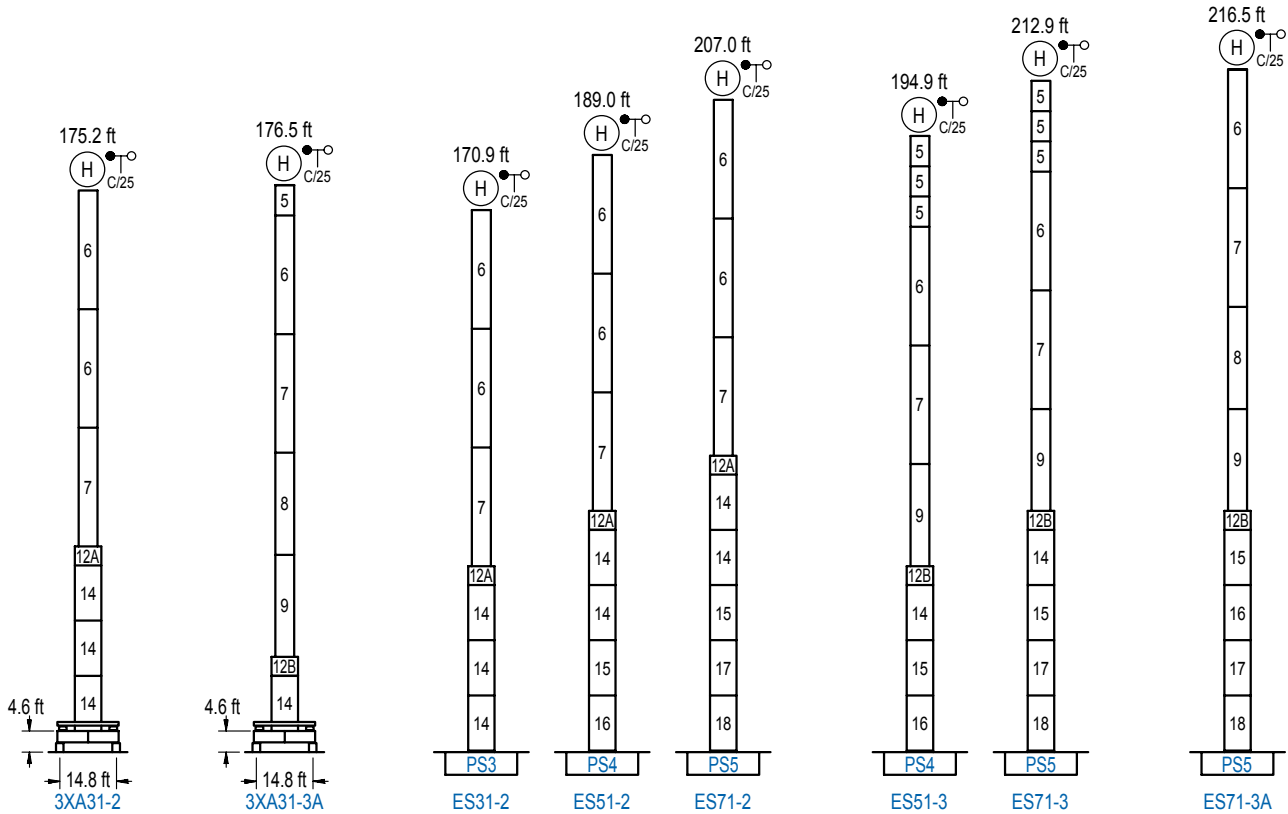
Internal climbing crane / Grue avec cage de télescopage intérieure / Kran mit klettern im Gebäude / Gru in rampante in cavedio / Кран с самоподъемом



n°	Ref.	∅	h
5	MH121	3.9	9.8
10	MT12-3A	3.9	9.5
11	CL20A	3.9	8.5

Otras zonas de viento, alturas superiores, arriostramientos o trepado interno consultar / Other wind zones, additional hook heights, tie frames or internal climbing on request / Autres zones de vent, des hauteurs supplémentaires, entretoisements ou grues avec cage de télescopage intérieure, sur demande / Andere Windzonen, weitere Hakenhöhen, Abspannungen zum Gebäude oder Klettern im Gebäude auf Anfrage / Per zone con velocità del vento particolari, altezze superiori, ancoraggi o rampante in cavedio, consultare il fabbricante / При других ветренных зонах, при большой высоте, привязках к зданию или наращивании крана внутри здания проконсультируйтесь с нами

LC 500



n°	Ref.	∅	h	n°	Ref.	∅	h	n°	Ref.	∅	h
5	MH121	3.9	9.8	12A	TMS13/PMH12	5.2	3.3	14	S13	5.2	18.0
6	MH124-1	3.9	38.7	12B	TMS13/PMH13	5.2	3.3	15	TS14	5.2	18.0
7	MH124A	3.9	38.7					16	S14	5.2	18.0
8	MT123A	3.9	33.1					17	TS15	5.2	18.0
9	MT123	3.9	33.1					18	S15	5.2	18.0
MH124-1 = 4x MH121 - 0.7 ft											

Otras zonas de viento o alturas superiores consultar / Other wind zones or additional hook heights on request / Autres zones de vent ou des hauteurs supplémentaires sur demande / Andere Windzonen oder weitere Hakenhöhen auf Anfrage / Per zone con velocità del vento particolari o altezze superiori consultare il fabbricante / При других ветренных зонах о при большой высоте проконсультируйтесь с нами



Construcciones Metálicas COMANSA S. A.

Tel.: (34) 948 335 020 / Fax: (34) 948 330 810 / e-mail: info@comansa.com  
Polígono Urbizkain E-31620 HUARTE-PAMPLONA.- SPAIN

DS.1307.06.IA 02/14 **5LC4510/11,020 lb**