

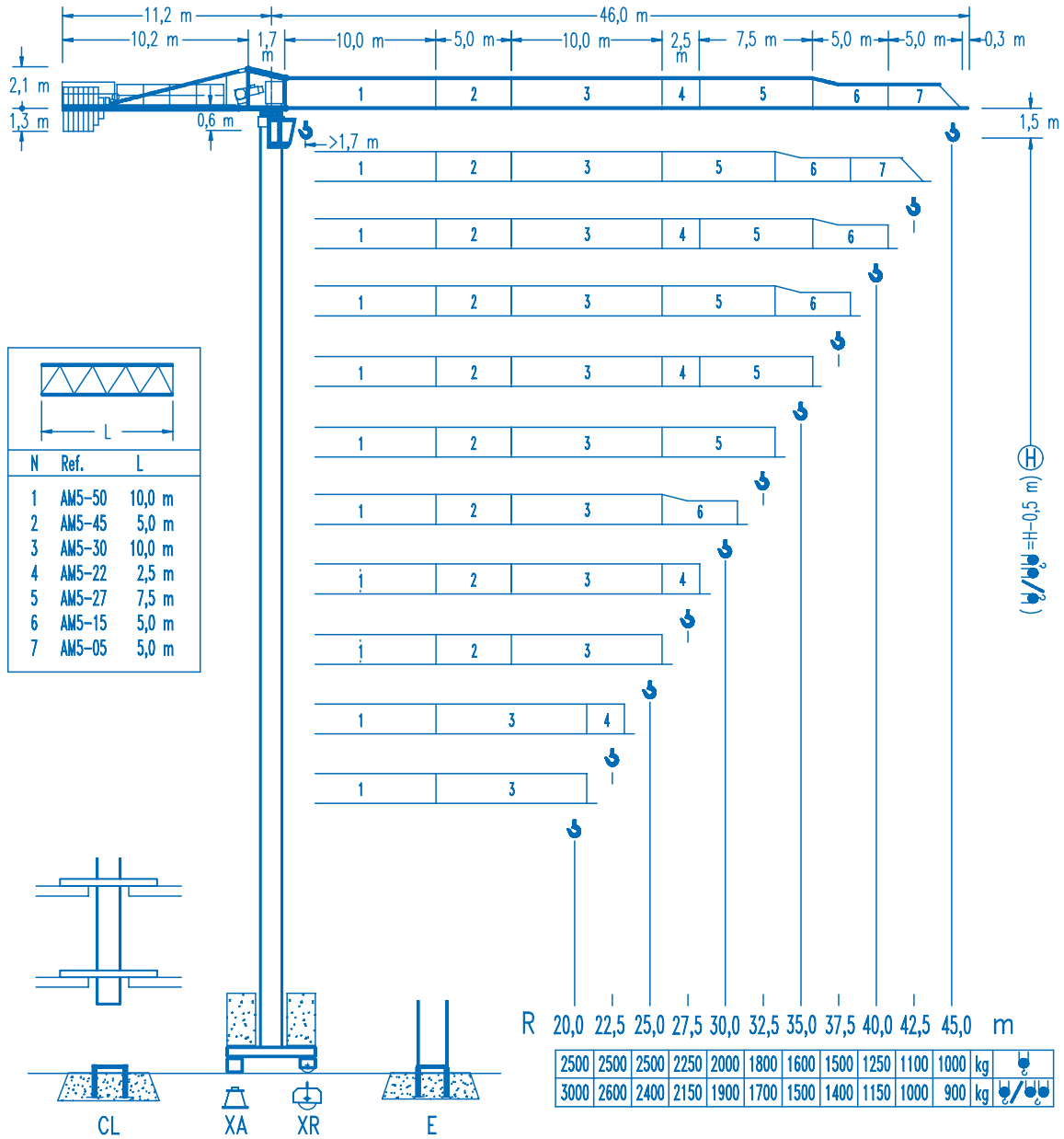


**COMANSA**

**LINDEN 500**

**5 LC 4510**

**5 t**

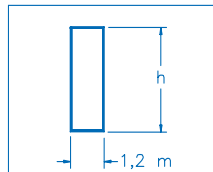
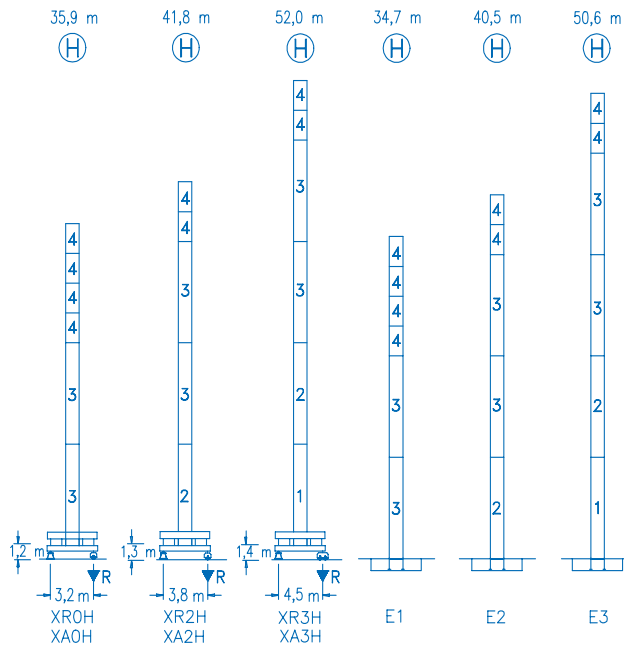


**CE**  
DIN 15018 H1 B3

R	R(Cmax)	Cmax	20,0	22,5	25,0	27,5	30,0	32,5	35,0	37,5	40,0	42,5	45,0	m	kg
45,0	20,6 m	2500	2500	2260	2000	1800	1620	1480	1360	1250	1150	1070	1000		
	11,1 m	5000	2530	2200	1930	1720	1540	1390	1270	1160	1060	980	900		
42,5	21,0 m	2500	2500	2310	2050	1840	1660	1520	1390	1280	1180	1100			
	11,3 m	5000	2580	2240	1980	1760	1580	1430	1300	1180	1090	1000			
40,0	21,9 m	2500	2500	2430	2160	1940	1750	1600	1460	1350	1250				
	11,7 m	5000	2710	2360	2080	1850	1660	1510	1370	1250	1150				
37,5	24,0 m	2500	2500	2500	2380	2140	1940	1770	1620	1500					
	12,8 m	5000	2990	2610	2300	2060	1850	1680	1530	1400					
35,0	23,6 m	2500	2500	2500	2350	2110	1910	1740	1600						
	12,6 m	5000	2940	2570	2260	2020	1820	1650	1500						
32,5	24,3 m	2500	2500	2500	2420	2180	1970	1800							
	12,9 m	5000	3030	2640	2330	2080	1880	1700							
30,0	24,6 m	2500	2500	2500	2460	2210	2000								
	13,0 m	5000	3070	2680	2360	2110	1900								
27,5	25,0 m	2500	2500	2500	2500	2250									
	13,2 m	5000	3120	2730	2410	2150									
25,0	25,0 m	2500	2500	2500	2500										
	13,2 m	5000	3110	2720	2400										

**DS.0541.11** 10/05 Reserva de modificaciones.- Subject to modifications.- Modifications réservées.- Konstruktionsänderungen vorbehalten.

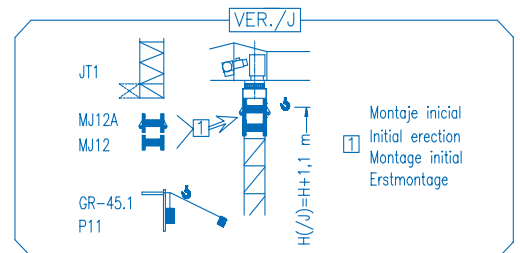
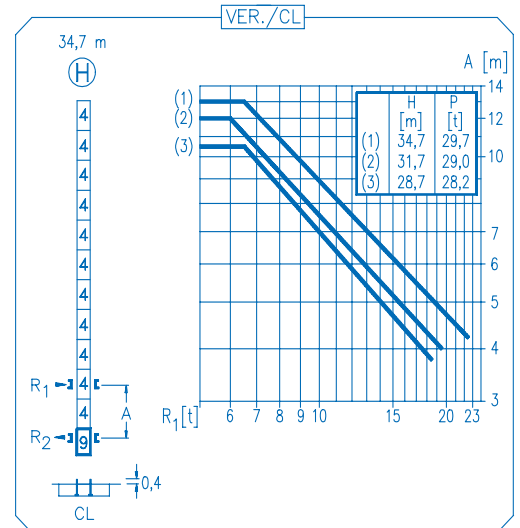
Courtesy of Crane.Market



N	Ref.	h
1	MT123	10,1 m
2	MH124A	11,8 m
3	MH124-1	11,8 m
4	MH121	3,0 m
9	CL20	2,2 m

MH124=(4)MH121-0,2 m

- H=H+0,2 m
- H=H
- H=H
- H=H-0,2 m



<b>R. máx.</b>	En servicio In operation	<b>XR0H ..... 42,9 t</b>
	En service In Betrieb	<b>XR2H ..... 43,8 t</b>
		<b>XR3H ..... 51,4 t</b>

<b>R. máx.</b>	Fuera de servicio Out of service	<b>XR0H ..... 53,8 t</b>
	Hors service Ausser Betrieb	<b>XR2H ..... 66,4 t</b>
		<b>XR3H ..... 87,0 t</b>

**CS2-1.9**

**1,9 kW**

**16 m/min**  
**48 m/min**

**CFU-2.2**

**2,2 kW**

**0 ⇄ 80 m/min**

**GR-7.5**

**75 Nm**

**0 ⇄ 0,8 rpm**

TS2-3.0	TS2-4.5	TS2-5.5
2x30 Nm	2x45 Nm	2x55 Nm
<b>0 ⇄ 20 m/min</b>		
<b>XR0H</b>	<b>XR2H</b>	<b>XR3H</b>

**ES3-18-12**

**18 kW**

	I	II	III
m/min	8	32	64
kg	2500	2500	1300
m/min	4	16	32
kg	5000	5000	2600

**ES3-13-12**

**13,2 kW**

	I	II	III
m/min	6	24	48
kg	2500	2500	1300
m/min	3	12	24
kg	5000	5000	2600

**EFU2-18-12**

**18 kW**

**EFU2-11-12**

**11 kW**

Tensión de alimentación Operating voltage Tension de service Betriebsspannung	<b>400 V</b> <b>3 ph</b> <b>50 Hz</b>
--	---

Optional Optional En option Kaufoption	<b>*</b>
---	----------