

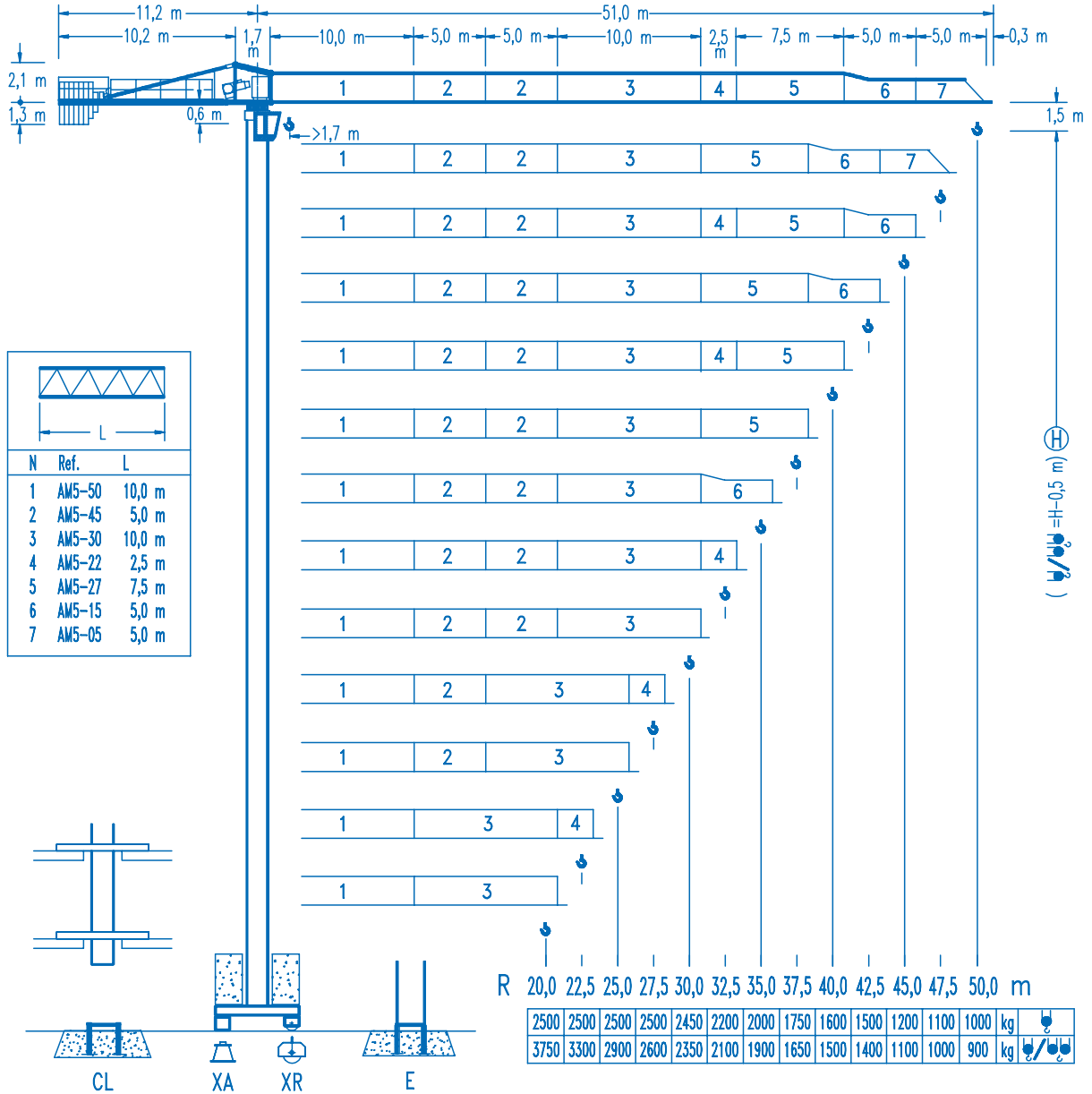


COMANSA

LINDEN 500

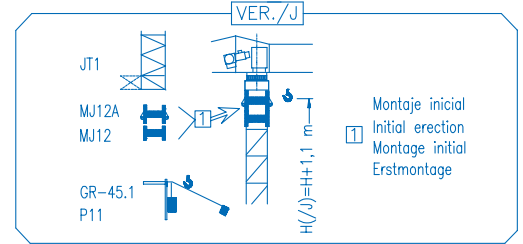
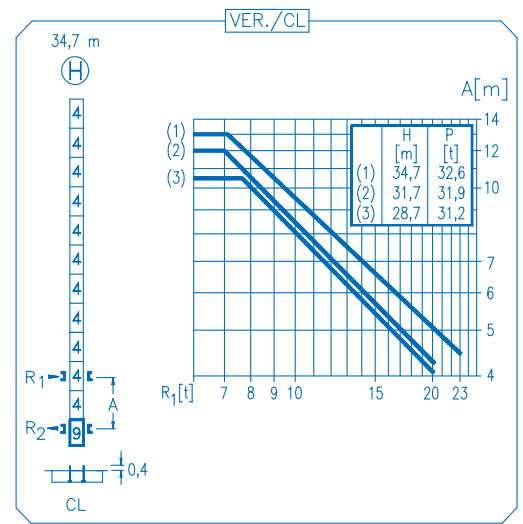
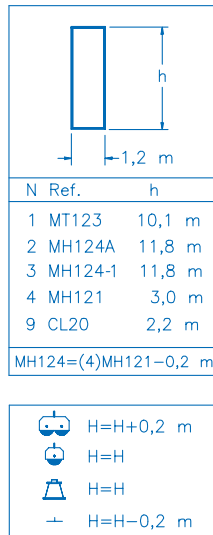
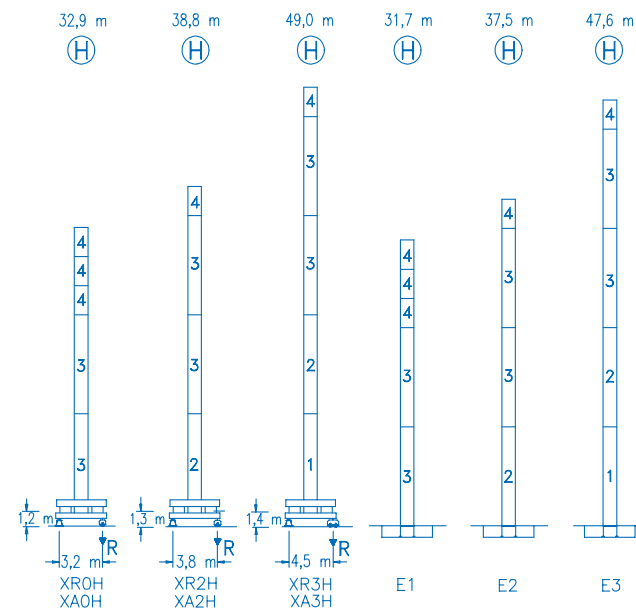
5 LC 5010

5 t



R	R(Cmax)	Cmax	20,0	22,5	25,0	27,5	30,0	32,5	35,0	37,5	40,0	42,5	45,0	47,5	50,0	m	kg
50,0	22,8 m	2500	2500	2500	2250	2020	1830	1670	1530	1410	1310	1220	1140	1070	1000	20,0	kg
	12,2 m	5000	2850	2480	2190	1950	1760	1590	1450	1330	1220	1120	1040	970	900		
47,5	23,4 m	2500	2500	2500	2320	2090	1890	1720	1580	1460	1350	1260	1170	1100	22,5	kg	
	12,5 m	5000	2930	2550	2250	2010	1810	1640	1490	1370	1260	1160	1080	1000			
45,0	23,8 m	2500	2500	2500	2370	2130	1930	1760	1610	1490	1380	1280	1200	25,0	kg		
	12,7 m	5000	2980	2600	2300	2050	1840	1670	1520	1400	1280	1190	1100				
42,5	27,1 m	2500	2500	2500	2500	2460	2230	2040	1880	1730	1610	1500	27,5	kg			
	14,4 m	5000	3450	3010	2660	2380	2150	1950	1780	1640	1510	1400					
40,0	27,0 m	2500	2500	2500	2500	2450	2220	2030	1860	1720	1600	30,0	kg				
	14,3 m	5000	3420	2990	2640	2370	2130	1940	1770	1630	1500						
37,5	27,3 m	2500	2500	2500	2500	2480	2250	2060	1890	1750	32,5	kg					
	14,5 m	5000	3470	3030	2680	2400	2160	1970	1800	1650							
35,0	28,7 m	2500	2500	2500	2500	2500	2380	2170	2000	35,0	kg						
	15,1 m	5000	3650	3190	2830	2530	2280	2080	1900								
32,5	29,0 m	2500	2500	2500	2500	2500	2410	2200	37,5	kg							
	15,3 m	5000	3690	3230	2860	2560	2310	2100									
30,0	29,5 m	2500	2500	2500	2500	2450	40,0	kg									
	15,5 m	5000	3750	3280	2910	2600			2350								

DS.0541.14 10/05 Reserva de modificaciones.- Subject to modifications.- Modifications réservées.- Konstruktionsänderungen vorbehalten.



R. máx.	En servicio	XR0H 43,2 t
	In operation	XR2H 42,8 t
	En service	XR3H 48,2 t
	In Betrieb	

R. máx.	Fuera de servicio	XR0H 48,4 t
	Out of service	XR2H 57,2 t
	Hors service	XR3H 77,9 t
	Ausser Betrieb	

CS2-1.9
1,9 kW
16 m/min
48 m/min

CFU-2.2
2,2 kW
0 ⇄ 80 m/min

GR-9.0
90 Nm
0 ⇄ 0,8 rpm

TS2-3.0 2x30 Nm	TS2-4.5 2x45 Nm	TS2-5.5 2x55 Nm
0 ⇄ 20 m/min		
XR0H	XR2H	XR3H

ES3-18-12
18 kW

		I	II	III
	m/min	8	32	64
	kg	2500	2500	1300
	m/min	4	16	32
	kg	5000	5000	2600

ES3-13-12
13,2 kW

		I	II	III
	m/min	6	24	48
	kg	2500	2500	1300
	m/min	3	12	24
	kg	5000	5000	2600

EFU2-18-12
18 kW

EFU2-11-12
11 kW

Tensión de alimentación	400 V
Operating voltage	3 ph
Tension de service	50 Hz
Betriebsspannung	

Opcional
Optional
En option
Kaufoption
