

R (max) ft	H1 ft	R (min) ft	H2 ft	Rfs ft
164.0	57.7	17.1	177.8	72.2
147.6	53.5	15.7	161.1	65.6
131.2	49.5	14.8	144.7	62.3
114.8	44.9	13.5	128.0	62.3
98.4	32.8	12.1	107.9	62.3

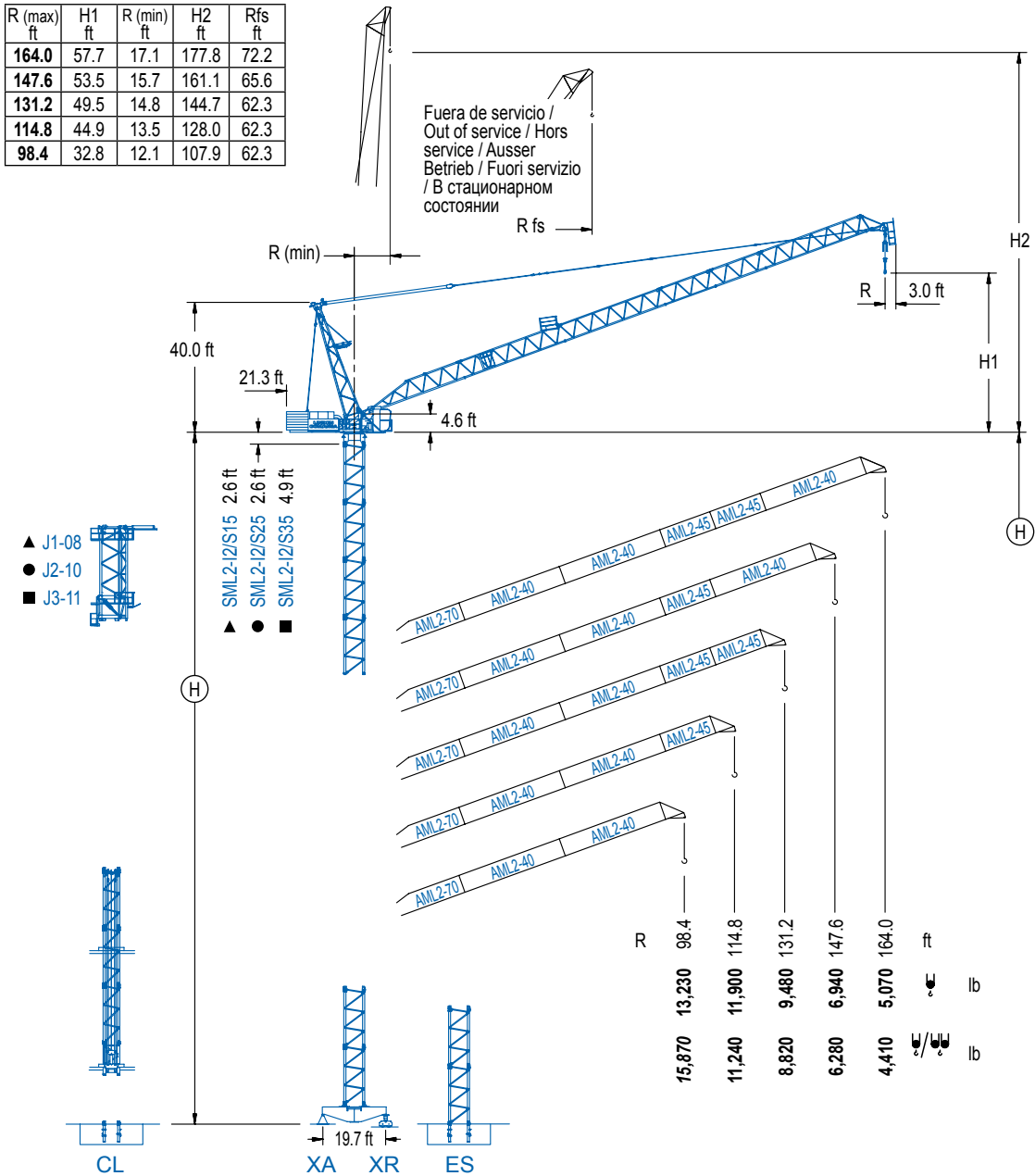
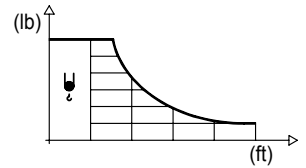


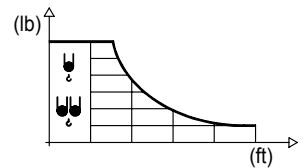
DIAGRAMA DE CARGAS

Load chart / Diagramme de charges / Lastdiagramm / Diagramma di carico / Диаграмма распределения нагрузки

R (ft)	↓	RCmax (ft)	32.8	49.0	65.6	82.0	98.4	114.8	131.2	147.6	164.0	↔ (ft) ↓ (lb)
164.0		93.2				13,230	12,080	9,370	7,520	6,150	5,070	
147.6		96.8				13,230	12,900	10,250	8,380	6,940		
131.2		101.4					13,230	11,290	9,480			
114.8		104.7					13,230	11,900				
98.4		98.4					13,230					

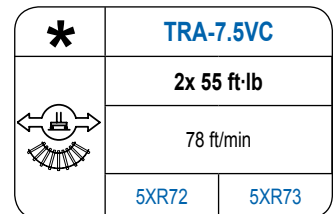
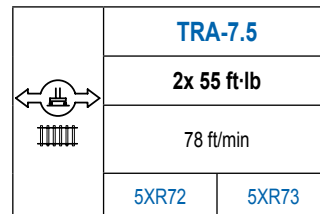
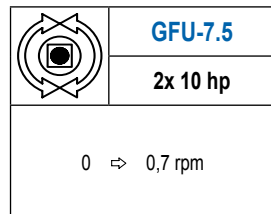
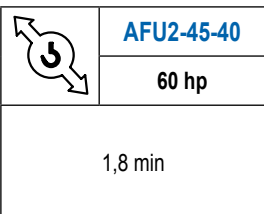
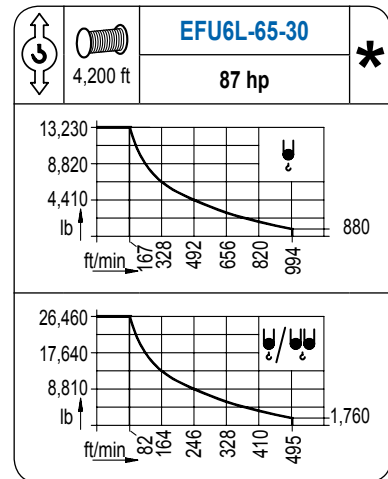
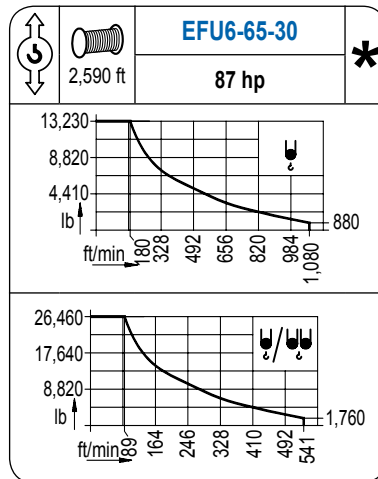
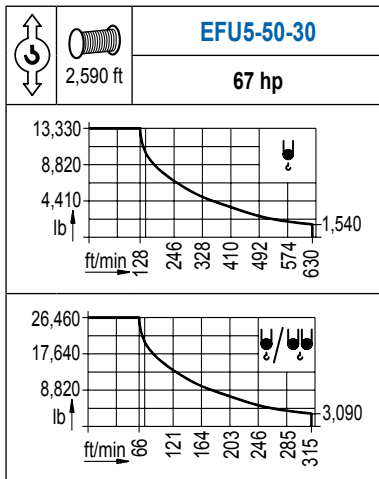


R (ft)	↓/↓	RCmax (ft)	32.8	49.0	65.6	82.0	98.4	114.8	131.2	147.6	164.0	↔ (ft) ↓ (lb)
164.0		38.7	26,460	19,840	14,070	10,760	8,600	7,080	5,950	5,090	4,410	
147.6		43.6	26,460	23,060	16,580	12,810	10,320	8,580	7,280	6,280		
131.2		47.9	26,460	25,710	18,940	14,880	12,170	10,250	8,820			
114.8		52.2		26,460	20,700	16,270	13,320	11,240				
98.4		55.1		26,460	22,690	18,580	15,870					



MECANISMOS

Mechanisms / Mécanismes / Antriebe / Meccanismi / Механизмы



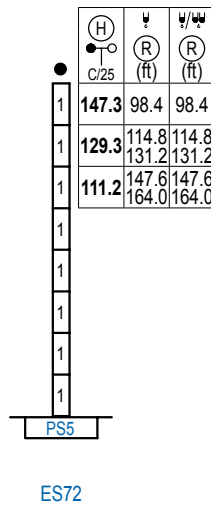
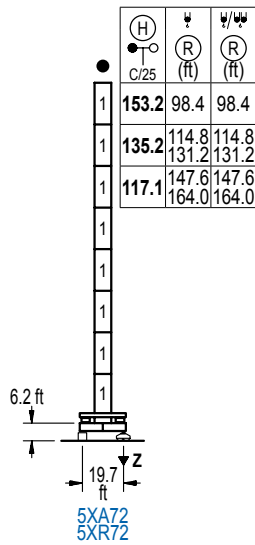
POTENCIA / POWER / PUISSANCE / LEISTUNG / POTENZA / МОЩНОСТЬ				Tensión de alimentación / Operating voltage / Tension de service / Betriebsspannung / Tensione di alimentazione / Напряжение источника питания		Generador / Generator / Générateur / Генератор	
Elevación / Hoist / Levage / Hub / Sollevamento / Тип механизма (подъем)	Abatimiento / Luffing / Releage / Einziehen / Brandeggio / Складывание	Giro / Slewing / Rotation / Drehbewegung / Rotazione / Поворот	Traslación / Travel / Translation / Verfahrbewegung / Traslazione / Ход	480 V	3ph	215 kVA	
EFU5-50-30				60 Hz		240 kVA	
EFU6-65-30	AFU2-45-40	(2x) GFU-7.5	(2x) TRA-7.5			240 kVA	
EFU6L-65-30							

Opcional / Optional / En option / Kaufoption / Opzionale / Опционально

ALTURAS DE TORRE

Tower height / Hauteurs de tour / Turmhöhen / Altezza della torre / Высота башни

∅ 6.6 ft



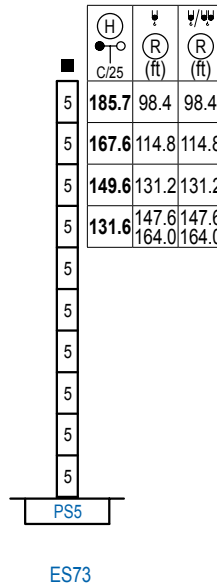
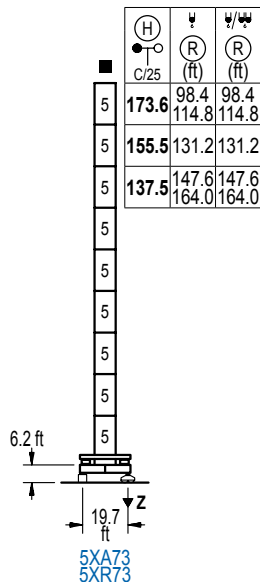
n°	Ref.	∅	h
1	S25	6.6	18.0
1x S25 = 1x S25M			

Z máx.	En servicio / In operation / En service / In Betrieb / In servizio / При работе	5XR72.. 231 kip
	Fuera de servicio / Out of service / Hors service / Ausser Betrieb / Fuori servizio / В стационарном состоянии	5XR72.. 289 kip

ALTURAS DE TORRE

Tower height / Hauteurs de tour / Turmhöhen / Altezza della torre / Высота башни

∅ 8.2 ft



n°	Ref.	∅	h
5	S35	8.2	18.0

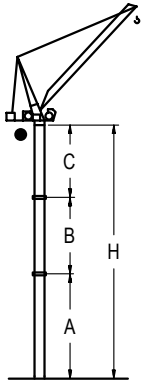
Z máx.	En servicio / In operation / En service / In Betrieb / In servizio / При работе	5XR73.. 258 kip
	Fuera de servicio / Out of service / Hors service / Ausser Betrieb / Fuori servizio / В стационарном состоянии	5XR73.. 355 kip

Otras zonas de viento o alturas superiores consultar / Other wind zones or additional hook heights on request / Autres zones de vent ou des hauteurs supplémentaires sur demande / Andere Windzonen oder weitere Hakenhöhen auf Anfrage / Per zone con velocità del vento particolari o altezze superiori consultare il fabbricante / При других ветренных зонах о при большой высоте проконсультируйтесь с нами

GRÚA ARRIOSTRADA

Braced crane / Grue à entretoisement / Abgespannter Kran / Gru ancorata / Наращиваемый кран

∅ 6.6 ft



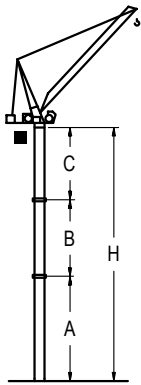
		5XA72			
R	↓	164.0 / 147.6	131.2 / 114.8	98.4	
(ft)	↓/↓	164.0 / 147.6	131.2 / 114.8	98.4	
A max		78.4	96.5	114.5	
A min		78.4	78.4	78.4	
B max		54.1	72.2	-	72.2
B min		54.1	54.1	-	54.1
C max		92.8	110.9	110.9	110.9
H max		171.3	225.4	207.3	279.5

		ES72			
R	↓	164.0 / 147.6	131.2 / 114.8	98.4	
(ft)	↓/↓	164.0 / 147.6	131.2 / 114.8	98.4	
A max		72.5	90.6	33.1	
A min		72.5	72.5	72.5	
B max		54.1	72.2	-	72.2
B min		54.1	54.1	-	54.1
C max		92.8	110.9	110.9	110.9
H max		165.4	219.5	201.4	273.6

GRÚA ARRIOSTRADA

Braced crane / Grue à entretoisement / Abgespannter Kran / Gru ancorata / Наращиваемый кран

∅ 8.2 ft



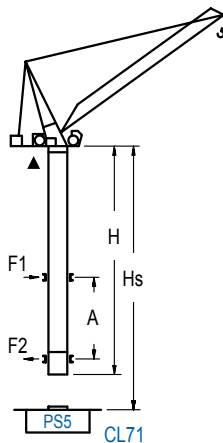
		5XA73			
R	↓	164.0 / 147.6	131.2	114.8 / 98.4	
(ft)	↓/↓	164.0 / 147.6	131.2	114.8 / 98.4	
A max		96.5	114.5	40.4	
A min		78.4	78.4	78.4	
B max		72.2	72.2	-	90.2
B min		54.1	54.1	-	54.1
C max		113.2	113.2	113.2	131.2
H max		63.9	281.8	227.7	300.0

		ES73			
R	↓	164.0 / 147.6	131.2	114.8	
(ft)	↓/↓	164.0 / 147.6	131.2	114.8	
A max		90.6	108.9	126.9	
A min		72.5	72.5	72.5	
B max		72.2	72.2	-	90.2
B min		54.1	54.1	-	54.1
C max		113.2	113.2	131.2	149.3
H max		203.7	275.9	221.8	294.0

GRÚA TREPADORA

Internal climbing crane / Grue avec cage de télescopage intérieure / Kran mit klettern im Gebäude / Gru in rampante in cavedio / Кран с самоподъемом

∅ 5.2 ft



H C/25	↓ (R)(ft)	↓/↓ (R)(ft)	Hs < 985 ft	
			A max (ft)	A min (ft)
139.1 ft (7x S15 + CLS15-1)	98.4 114.8	98.4 114.8	64.3	42.7
121.1 ft (6x S15 + CLS15-1)	131.2	131.2	55.1	42.7
103.0 ft (5x S15 + CLS15-1)	147.6 164.0	147.6 164.0	46.3	45.9

		h (ft)	
nº	Ref.	∅	h
15	S15	5.2	18.0
16	CLS15-1	5.2	10.2

1x S15 = 1x S15M

Otras zonas de viento, alturas superiores, arriostamientos o trepado interno consultar / Other wind zones, additional hook heights, tie frames or internal climbing on request / Autres zones de vent, des hauteurs supplémentaires, entretoisements où grues avec cage de télescopage intérieure, sur demande / Andere Windzonen, weitere Hakenhöhen, Abspannungen zum Gebäude oder Klettern im Gebäude auf Anfrage / Per zone con velocità del vento particolari, altezze superiori, ancoraggi o rampante in cavedio, consultare il fabbricante / При других ветренных зонах, при большой высоте, привязках к зданию или наращивании крана внутри здания проконсультируйтесь с нами

LINDEN COMANSA
Construcciones Metálicas COMANSA S. A.

Tel.: (+34) 948 335 020 / Fax: (+34) 948 330 810 / E-mail: info@comansa.com
Polígono Urbizkain, Ctra. Aoiz nº1 31620, Huarte (Navarra), SPAIN

DS.1539.05.IA 11/16 **LCL 165/26,460 lb**

Reserva de modificaciones. Subject to modifications. Modifications réservées. Konstruktionsänderungen vorbehalten.
Il fabbricante si riserva la facoltà di apportare modifiche. Возможны изменения.