

# Jib Capacities

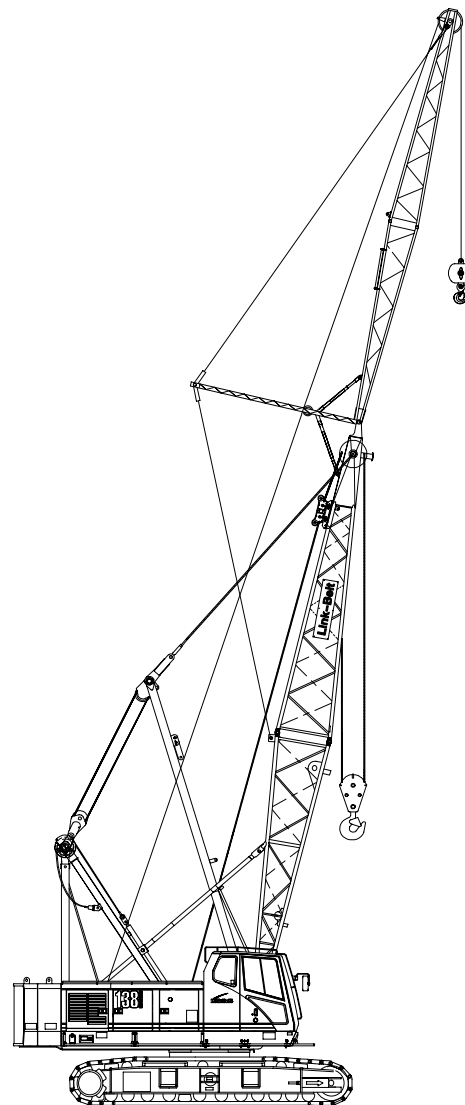
Lattice Boom Crawler Crane

## 138 HYLAB 5

80-ton (72.6 metric ton)

### Angle Boom + Jib

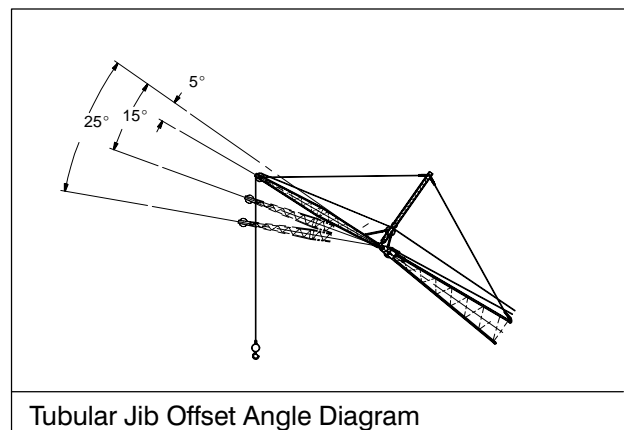
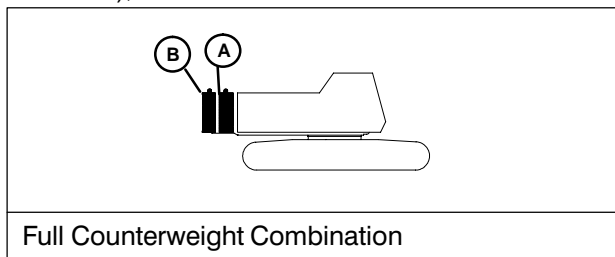
- 40'–140' (12.19 – 42.7m) Angle Boom with 30' – 60' (9.14 – 18.28m) of Jib
- 40' – 150' (12.19 – 45.72m) Angle Boom with 30' (9.14m) of Jib
- 20' (6.10m) Open Throat Top Section with 32" (0.81m) Wide x 24" (0.61m) Deep Jib
- With or Without 24' (7.31m) Live Mast
- Extended / Retracted Side Frames
- Over End Blocked Capacities
- 360° Capacities
- "AB" Counterweight Options
- 20' 2" (6.15m) Crawler Length



**CAUTION:** This material is supplied for reference use only. Operator must refer to in-cab Crane Rating Manual to determine allowable crane lifting capacities and operating procedures.

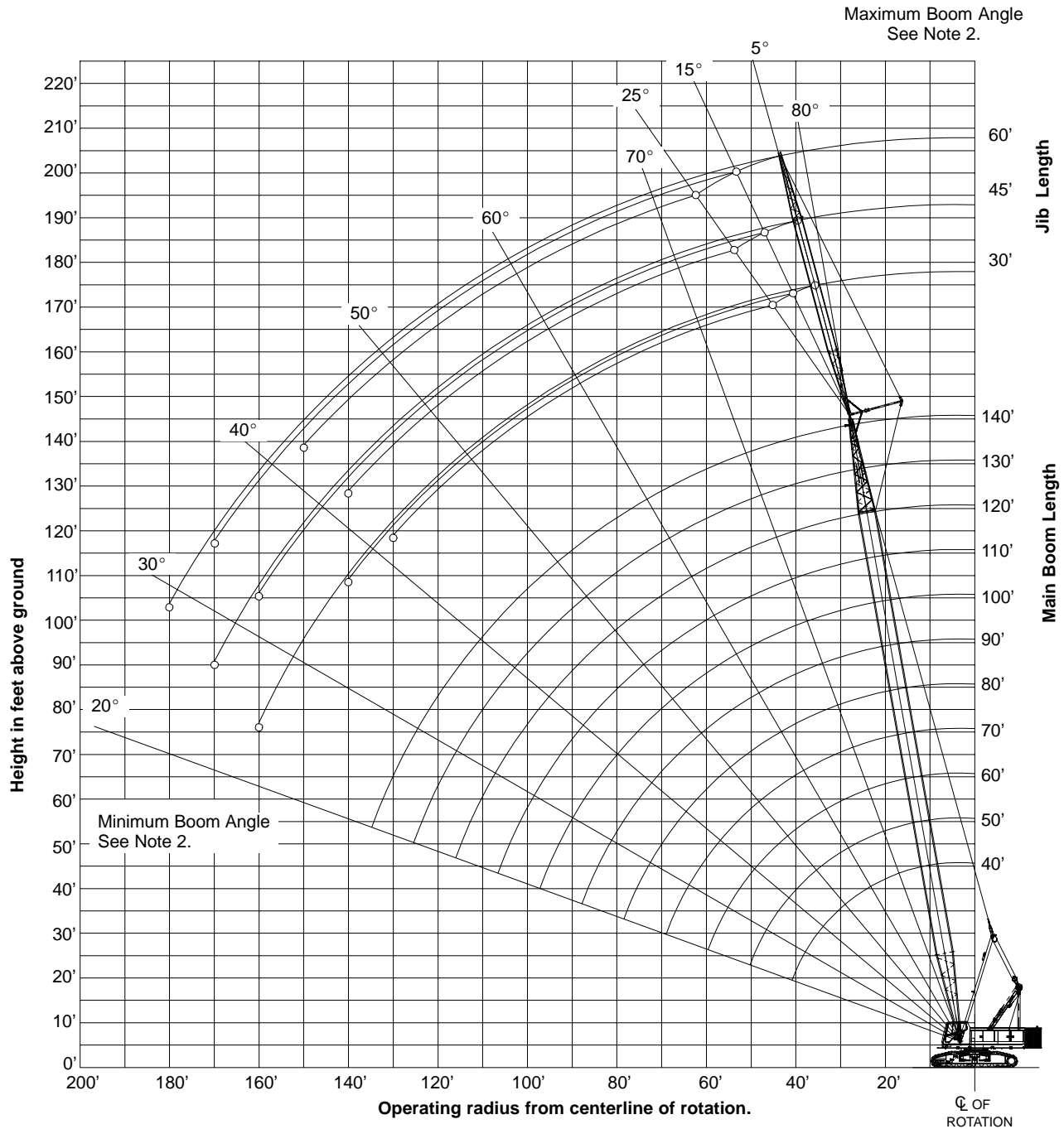
## TUBULAR JIB NOTES FOR OPEN THROAT BOOM

1. Capacities are for a 138 HYLAB crawler crane with AB (50,500 lb) counterweight.
2. Separate capacity charts are listed for 360° and for over end blocked crawler working areas. Verify operating conditions as described on the Working Area Chart found in the general information section of the Crane Rating Manual. Apply the appropriate lift capacity chart based on the working area and the specific operating conditions.
3. Over end blocked capacities can be lifted over either end with the crane standing level on a firm supporting surface. Adequate blocking must be placed under both side frame sprockets (or idler rollers) at the end that the load is to be lifted to prevent rocking. The ramps supplied with the crane are considered to be adequate blocking.
4. Capacities are for side frames in the extended position only and are based on the crane standing level on a firm supporting surface.
5. Capacities are limited to a LBCE 48" x 48" angle boom with an open throat and a LBCE 12 ton, 24" x 32" cross section jib with a 11'6" high jib mast properly assembled.
6. Two parts of 7/8" Diameter Type "DB" or Type "RB" wire rope are required for maximum lift.
7. Capacities are for 30', 45', and 60' jib lengths only.
8. Maximum boom plus jib combination is 140' + 60' or 150' + 30'. The only jib length available on the 150' open throat boom length is 30'.
9. The least stable condition is over the side.
10. All capacities are listed in pounds and are not more than 75% of the tipping loads. Those capacities followed by an asterisk (\*) are governed by factors other than those that would cause a tipping condition.
11. A deduction must be made from the jib capacities for the weight of the following: Main boom hook block or hook ball, jib hook block or hook ball, slings, grapple, load weighing devices (other than those supplied with the crane), etc.



# WORKING RANGE DIAGRAM

## 40' TO 140' MAIN BOOM WITH 30' TO 60' JIB

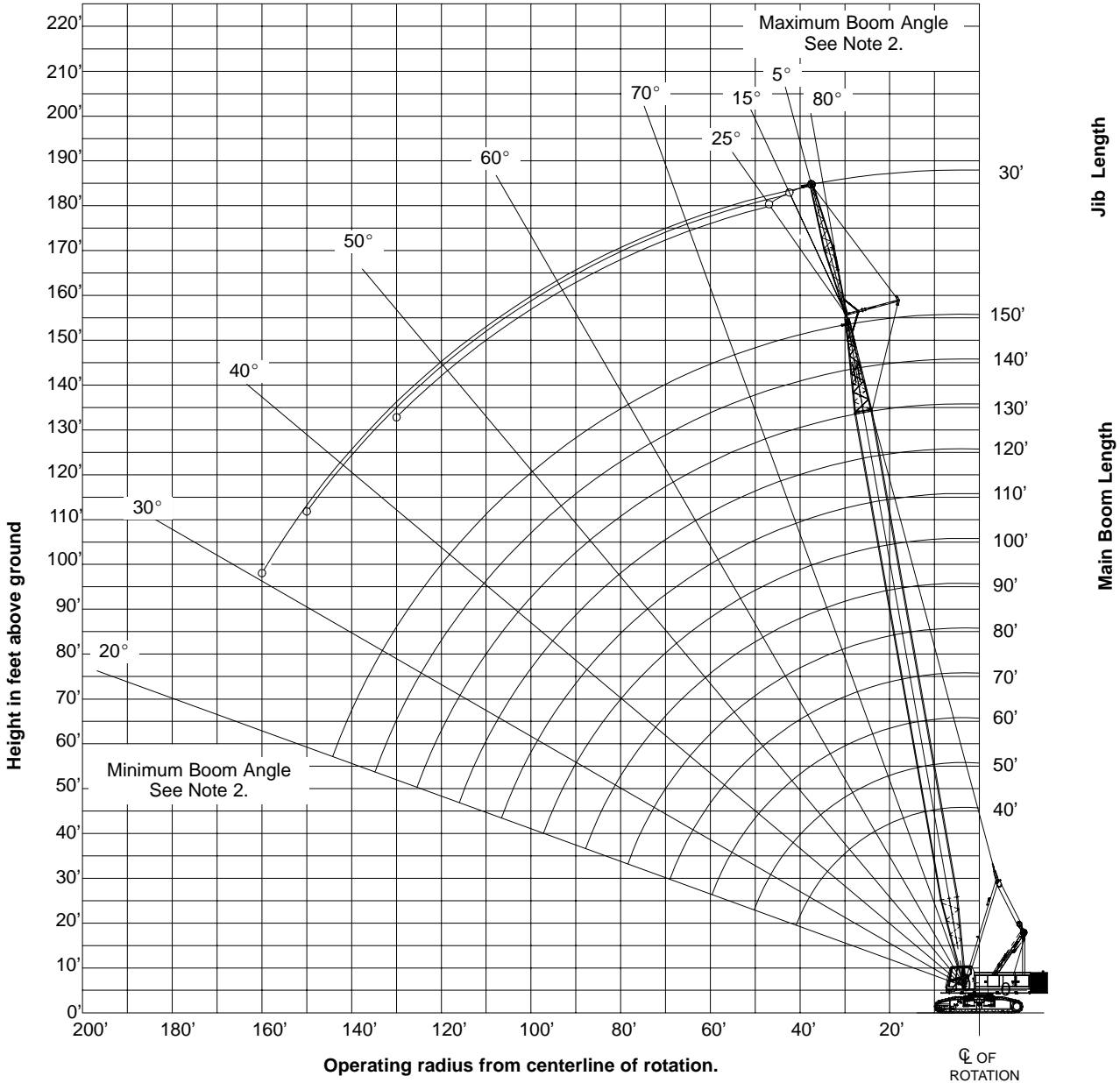


**Notes:**

1. Boom geometry shown is for unloaded condition and crane standing level on firm supporting surface. Boom deflection, subsequent radius, and boom angle change must be accounted for when applying load to hook.
2. Maximum and minimum boom angles are equal to the values listed in the capacity chart for each boom length.

# WORKING RANGE DIAGRAM

## 40' TO 150' MAIN BOOM WITH 30' JIB



**Notes:**

1. Boom geometry shown is for unloaded condition and crane standing level on firm supporting surface. Boom deflection, subsequent radius, and boom angle change must be accounted for when applying load to hook.
2. Maximum and minimum boom angles are equal to the values listed in the capacity chart for each boom length.

## 138 HYLAB 5 - w/ 48" x 48" Angle Boom, w/ 24" x 32" Tube Jib, w/ "AB" Cwt

Refer to the Tubular Jib notes for Open Throat Boom in the Crane Rating Manual before operating the crane.

Boom Length (ft)	Jib Length (ft)	Jib Load Radius (ft)	Jib Angle to Boom												Jib Load Radius (ft)			
			5 Degrees				15 Degrees				25 Degrees							
			Boom Angle (deg)	Jib Point Height (ft)	Over End Capacity (lbs)	Jib Capacity (lbs)	Boom Angle (deg)	Jib Point Height (ft)	Over End Capacity (lbs)	Jib Capacity (lbs)	360° Jib Capacity (lbs)	Boom Angle (deg)	Jib Point Height (ft)	Over End Capacity (lbs)		Jib Capacity (lbs)	360° Jib Capacity (lbs)	
40	30	18.4	80.0	76.0	24,000 *	24,000 *												18.4
40	30	19	79.4	75.9	24,000 *	24,000 *												19
40	30	20	78.6	75.6	24,000 *	24,000 *												20
40	30	25	74.5	74.2	24,000 *	24,000 *	78.5	73.8	24,000 *	24,000 *								25
40	30	30	70.2	72.4	24,000 *	24,000 *	74.2	72.0	24,000 *	24,000 *	78.0	70.8	19,700 *	19,700 *				30
40	30	35	65.9	70.2	24,000 *	24,000 *	69.8	69.8	23,600 *	23,600 *	73.5	68.5	17,700 *	17,700 *				35
40	30	40	61.3	67.5	24,000 *	24,000 *	65.2	67.1	21,000 *	21,000 *	68.9	65.7	16,900 *	16,900 *				40
40	30	50	51.5	60.3	20,900 *	20,900 *	55.3	59.8	17,300 *	17,300 *	58.7	58.3	14,700 *	14,700 *				50
40	30	60	39.9	49.8	17,300 *	17,300 *	43.5	49.2	16,200 *	16,200 *	46.5	47.2	13,200 *	13,200 *				60
40	45	22.2	80.0	90.2	24,000 *	24,000 *												22.2
40	45	25	78.1	89.5	24,000 *	24,000 *												25
40	45	30	74.7	88.0	24,000 *	24,000 *	79.7	87.4	19,200 *	19,200 *								30
40	45	35	71.2	86.2	21,700 *	21,700 *	76.2	85.6	17,300 *	17,300 *								35
40	45	40	67.6	84.0	19,000 *	19,000 *	72.5	83.4	16,600 *	16,600 *	77.3	81.7	12,500 *	12,500 *				40
40	45	50	60.0	78.3	16,600 *	16,600 *	64.9	77.8	13,500 *	13,500 *	69.5	75.9	10,500 *	10,500 *				50
40	45	60	51.8	70.8	13,700 *	13,700 *	56.6	70.2	11,400 *	11,400 *	61.0	68.1	9,200 *	9,200 *				60
40	45	70	42.3	60.5	11,600 *	11,600 *	47.0	59.8	10,000 *	10,000 *	51.1	57.3	8,200 *	8,200 *				70
40	45	80	30.4	45.4	10,100 *	10,100 *												80
40	60	26.1	80.0	104.8	24,000 *	24,000 *												26.1
40	60	30	77.7	103.8	21,200 *	21,200 *												30
40	60	35	74.8	102.2	18,200 *	18,200 *												35
40	60	40	71.8	100.4	17,300 *	17,300 *	77.5	99.8	13,700 *	13,700 *								40
40	60	50	65.6	95.9	13,700 *	13,700 *	71.3	95.3	11,100 *	11,100 *	76.8	93.3	8,500 *	8,500 *				50
40	60	60	59.1	89.9	11,300 *	11,300 *	64.7	89.3	9,300 *	9,300 *	70.0	87.1	7,300 *	7,300 *				60
40	60	70	52.0	82.1	9,500 *	9,500 *	57.5	81.5	8,000 *	8,000 *	62.7	79.2	6,400 *	6,400 *				70
40	60	80	44.0	72.1	8,200 *	8,200 *	49.4	71.4	7,100 *	7,100 *	54.3	68.7	5,800 *	5,800 *				80
40	60	90	34.5	58.4	7,300 *	7,300 *	39.7	57.5	6,300 *	6,300 *								90

## 138 HYLAB 5 - w/ 48" x 48" Angle Boom, w/ 24" x 32" Tube Jib, w/ "AB" Ctw

Refer to the Tubular Jib notes for Open Throat Boom in the Crane Rating Manual before operating the crane.

Boom Length (ft)	Jib Length (ft)	Jib Load Radius (ft)	Jib Angle to Boom												Jib Load Radius (ft)			
			5 Degrees				15 Degrees				25 Degrees							
			Boom Angle (deg)	Jib Point Height (ft)	Over End Capacity (lbs)	Jib Capacity (lbs)	360° Jib Capacity (lbs)	Boom Angle (deg)	Jib Point Height (ft)	Over End Capacity (lbs)	Jib Capacity (lbs)	360° Jib Capacity (lbs)	Boom Angle (deg)	Jib Point Height (ft)		Over End Capacity (lbs)	Jib Capacity (lbs)	360° Jib Capacity (lbs)
50	30	20.1	80.0	85.9	24,000 *	24,000 *												20.1
50	30	25	76.4	84.7	24,000 *	24,000 *												25
50	30	30	72.8	83.1	24,000 *	24,000 *	76.3	82.6	24,000 *	24,000 *	79.6	81.3	20,500 *	20,500 *				30
50	30	35	69.0	81.2	24,000 *	24,000 *	72.5	80.7	24,000 *	24,000 *	75.8	79.4	18,600 *	18,600 *				35
50	30	40	65.2	78.9	24,000 *	24,000 *	68.6	78.4	22,800 *	22,800 *	71.8	77.0	17,400 *	17,400 *				40
50	30	50	57.0	72.9	23,600 *	23,600 *	60.4	72.4	18,900 *	18,900 *	63.4	70.9	15,600 *	15,600 *				50
50	30	60	47.9	64.7	19,500 *	19,500 *	51.2	64.2	17,400 *	17,400 *	54.0	62.4	14,000 *	14,000 *				60
50	30	70	37.2	53.1	17,400 *	16,700 *	40.2	52.4	15,600 *	15,700 *								70
50	45	24.0	80.0	100.1	24,000 *	24,000 *												24.0
50	45	25	79.4	99.8	24,000 *	24,000 *												25
50	45	30	76.3	98.5	24,000 *	24,000 *												30
50	45	35	73.2	96.8	23,500 *	23,500 *	77.7	96.2	17,700 *	17,700 *								35
50	45	40	70.0	94.9	20,700 *	20,700 *	74.5	94.2	17,300 *	17,300 *	78.8	92.4	13,000 *	13,000 *				40
50	45	50	63.5	90.0	17,300 *	17,300 *	67.9	89.4	14,500 *	14,500 *	72.0	87.4	11,100 *	11,100 *				50
50	45	60	56.4	83.6	15,100 *	15,100 *	60.8	82.9	12,400 *	12,400 *	64.8	80.8	9,700 *	9,700 *				60
50	45	70	48.7	75.2	12,900 *	12,900 *	53.0	74.4	10,800 *	10,800 *	56.7	72.0	8,700 *	8,700 *				70
50	45	80	39.9	64.0	11,200 *	11,200 *	43.9	63.1	9,600 *	9,600 *	47.4	60.3	7,900 *	7,900 *				80
50	45	90	28.7	47.8	10,000 *	10,000 *												90
50	60	27.9	80.0	114.6	24,000 *	24,000 *												27.9
50	60	30	78.8	114.1	22,600 *	22,600 *												30
50	60	35	76.2	112.7	19,500 *	19,500 *												35
50	60	40	73.5	111.1	17,300 *	17,300 *	78.7	110.4	14,400 *	14,400 *								40
50	60	50	68.0	107.0	14,900 *	14,900 *	73.1	106.3	11,800 *	11,800 *	78.1	104.2	8,800 *	8,800 *				50
50	60	60	62.2	101.7	12,300 *	12,300 *	67.3	101.0	9,900 *	9,900 *	72.1	98.7	7,600 *	7,600 *				60
50	60	70	56.0	95.0	10,400 *	10,400 *	61.1	94.3	8,600 *	8,600 *	65.8	91.8	6,700 *	6,700 *				70
50	60	80	49.3	86.5	9,000 *	9,000 *	54.3	85.8	7,600 *	7,600 *	58.8	83.0	6,100 *	6,100 *				80
50	60	90	41.8	75.7	7,900 *	7,900 *	46.6	74.8	6,800 *	6,800 *	50.9	71.6	5,500 *	5,500 *				90
50	60	100	32.7	61.1	7,100 *	7,100 *	37.3	59.9	6,200 *	6,200 *								100

## 138 HYLAB 5 - w/ 48" x 48" Angle Boom, w/ 24" x 32" Tube Jib, w/ "AB" Ctw

Refer to the Tubular Jib notes for Open Throat Boom in the Crane Rating Manual before operating the crane.

Boom Length (ft)	Jib Length (ft)	Jib Load Radius (ft)	Jib Angle to Boom												Jib Load Radius (ft)				
			5 Degrees				15 Degrees				25 Degrees								
			Boom Angle (deg)	Jib Point Height (ft)	Over End Capacity (lbs)	Jib Capacity (lbs)	360° Jib Capacity (lbs)	Boom Angle (deg)	Jib Point Height (ft)	Over End Capacity (lbs)	Jib Capacity (lbs)	360° Jib Capacity (lbs)	Boom Angle (deg)	Jib Point Height (ft)		Over End Capacity (lbs)	Jib Capacity (lbs)	360° Jib Capacity (lbs)	
60	30	21.8	80.0	95.7	24,000 *	24,000 *													21.8
60	30	25	77.9	95.0	24,000 *	24,000 *													25
60	30	30	74.7	93.6	24,000 *	24,000 *	77.8	93.1	24,000 *	24,000 *									30
60	30	35	71.4	91.9	24,000 *	24,000 *	74.5	91.4	24,000 *	24,000 *	77.5	90.0	19,400 *	19,400 *					35
60	30	40	68.1	89.9	24,000 *	24,000 *	71.1	89.4	24,000 *	24,000 *	74.0	88.0	17,900 *	17,900 *					40
60	30	50	61.0	84.8	24,000 *	24,000 *	64.1	84.3	20,400 *	20,400 *	66.8	82.7	16,300 *	16,300 *					50
60	30	60	53.5	78.0	21,700 *	20,100	56.4	77.4	17,600 *	17,600 *	59.0	75.7	14,700 *	14,700 *					60
60	30	70	45.0	68.8	18,600 *	16,400	47.8	68.2	17,100 *	16,600	50.2	66.2	13,500 *	13,500 *					70
60	30	80	34.9	56.2	16,000 *	13,700	37.6	55.3	15,300 *	13,800									80
60	45	25.7	80.0	109.9	24,000 *	24,000 *													25.7
60	45	30	77.6	108.9	24,000 *	24,000 *													30
60	45	35	74.8	107.4	24,000 *	24,000 *	78.9	106.7	18,500 *	18,500 *									35
60	45	40	72.0	105.7	22,400 *	22,400 *	76.0	104.9	17,300 *	17,300 *	79.9	103.0	13,300 *	13,300 *					40
60	45	50	66.2	101.3	18,000 *	18,000 *	70.2	100.6	15,400 *	15,400 *	73.9	98.5	11,500 *	11,500 *					50
60	45	60	60.0	95.7	16,600 *	16,600 *	63.9	94.9	13,200 *	13,200 *	67.6	92.8	10,100 *	10,100 *					60
60	45	70	53.4	88.5	14,100 *	14,100 *	57.3	87.7	11,600 *	11,600 *	60.8	85.3	9,100 *	9,100 *					70
60	45	80	46.2	79.3	12,300 *	12,300 *	49.9	78.4	10,300 *	10,300 *	53.2	75.8	8,300 *	8,300 *					80
60	45	90	37.8	67.2	10,900 *	10,900 *	41.4	66.2	9,400 *	9,400 *									90
60	45	100	27.2	50.1	9,900 *	9,900 *													100
60	60	29.6	80.0	124.5	24,000 *	24,000 *													29.6
60	60	30	79.8	124.4	23,900 *	23,900 *													30
60	60	35	77.4	123.1	20,700 *	20,700 *													35
60	60	40	74.9	121.6	18,200 *	18,200 *	79.7	120.8	14,900 *	14,900 *									40
60	60	50	69.9	117.9	16,100 *	16,100 *	74.6	117.1	12,300 *	12,300 *	79.2	114.9	9,100 *	9,100 *					50
60	60	60	64.7	113.2	13,300 *	13,300 *	69.4	112.4	10,500 *	10,500 *	73.8	110.0	7,900 *	7,900 *					60
60	60	70	59.2	107.2	11,300 *	11,300 *	63.9	106.4	9,100 *	9,100 *	68.2	103.9	7,000 *	7,000 *					70
60	60	80	53.4	99.8	9,800 *	9,800 *	58.0	99.0	8,100 *	8,100 *	62.2	96.2	6,300 *	6,300 *					80
60	60	90	47.0	90.7	8,600 *	8,600 *	51.5	89.8	7,200 *	7,200 *	55.5	86.7	5,800 *	5,800 *					90
60	60	100	39.9	79.1	7,700 *	7,700 *	44.2	78.1	6,600 *	6,600 *	47.9	74.5	5,400 *	5,400 *					100
60	60	110	31.2	63.7	7,000 *	7,000 *	35.3	62.3	6,100 *	6,100 *									110

## 138 HYLAB 5 - w/ 48" x 48" Angle Boom, w/ 24" x 32" Tube Jib, w/ "AB" Cwt

Refer to the Tubular Jib notes for Open Throat Boom in the Crane Rating Manual before operating the crane.

Boom Length (ft)	Jib Length (ft)	Jib Load Radius (ft)	Jib Angle to Boom												Jib Load Radius (ft)	
			5 Degrees				15 Degrees				25 Degrees					
			Boom Angle (deg)	Jib Point Height (ft)	Over End Capacity (lbs)	Jib 360° Capacity (lbs)	Boom Angle (deg)	Jib Point Height (ft)	Over End Capacity (lbs)	Jib 360° Capacity (lbs)	Boom Angle (deg)	Jib Point Height (ft)	Over End Capacity (lbs)	Jib 360° Capacity (lbs)		
70	30	23.6	80.0	105.6	24,000 *	24,000 *										23.6
70	30	25	79.2	105.2	24,000 *	24,000 *										25
70	30	30	76.3	104.0	24,000 *	24,000 *	79.1	103.5	24,000 *	24,000 *						30
70	30	35	73.3	102.5	24,000 *	24,000 *	76.1	102.0	24,000 *	24,000 *	78.8	100.5	20,000 *	20,000 *		35
70	30	40	70.3	100.7	24,000 *	24,000 *	73.1	100.2	24,000 *	24,000 *	75.7	98.7	18,500 *	18,500 *		40
70	30	50	64.1	96.2	24,000 *	24,000 *	66.9	95.7	21,800 *	21,800 *	69.4	94.1	17,000 *	17,000 *		50
70	30	60	57.6	90.3	23,000 *	19,900	60.3	89.7	18,800 *	18,800 *	62.7	88.0	15,400 *	15,400 *		60
70	30	70	50.5	82.7	19,000	16,200	53.1	82.0	17,300 *	16,400	55.4	80.2	14,200 *	14,200 *		70
70	30	80	42.6	72.7	15,900	13,400	45.1	72.0	16,000	13,600	47.1	69.8	13,200 *	13,200 *		80
70	30	90	33.0	59.1	13,100 *	11,300	35.4	58.1	13,500	11,400						90
70	45	27.5	80.0	119.8	24,000 *	24,000 *										27.5
70	45	30	78.7	119.2	24,000 *	24,000 *										30
70	45	35	76.2	117.8	24,000 *	24,000 *	79.9	117.0	19,200 *	19,200 *						35
70	45	40	73.6	116.3	23,900 *	23,900 *	77.3	115.5	17,400 *	17,400 *						40
70	45	50	68.3	112.3	19,400 *	19,400 *	72.0	111.6	16,300 *	16,300 *	75.4	109.5	11,900 *	11,900 *		50
70	45	60	62.9	107.3	17,300 *	17,300 *	66.5	106.5	14,000 *	14,000 *	69.8	104.3	10,600 *	10,600 *		60
70	45	70	57.1	101.0	15,300 *	15,400 *	60.6	100.2	12,300 *	12,300 *	63.8	97.8	9,500 *	9,500 *		70
70	45	80	50.8	93.1	13,400 *	13,400 *	54.3	92.2	11,000 *	11,000 *	57.4	89.7	8,700 *	8,700 *		80
70	45	90	44.0	83.2	11,900 *	11,600	47.3	82.2	10,000 *	10,000 *	50.2	79.3	8,100 *	8,100 *		90
70	45	100	36.0	70.3	10,700 *	9,900	39.2	69.2	9,200 *	9,200 *						100
70	60	31.3	80.0	134.3	24,000 *	24,000 *										31.3
70	60	35	78.3	133.5	21,800 *	21,800 *										35
70	60	40	76.1	132.1	19,300 *	19,300 *										40
70	60	50	71.5	128.7	17,200 *	17,200 *	75.9	127.8	12,900 *	12,900 *						50
70	60	60	66.8	124.4	14,300 *	14,300 *	71.1	123.5	11,000 *	11,000 *	75.2	121.0	8,200 *	8,200 *		60
70	60	70	61.8	119.0	12,100 *	12,100 *	66.1	118.1	9,600 *	9,600 *	70.1	115.5	7,300 *	7,300 *		70
70	60	80	56.7	112.4	10,500 *	10,600 *	60.9	111.6	8,500 *	8,500 *	64.8	108.7	6,600 *	6,600 *		80
70	60	90	51.1	104.5	9,300 *	9,300 *	55.3	103.5	7,700 *	7,700 *	59.0	100.5	6,100 *	6,100 *		90
70	60	100	45.0	94.7	8,300 *	8,300 *	49.1	93.6	7,000 *	7,000 *	52.7	90.3	5,600 *	5,600 *		100
70	60	110	38.2	82.4	7,500 *	7,500 *	42.1	81.2	6,400 *	6,400 *						110
70	60	120	29.9	66.2	6,900 *	6,900 *										120



## 138 HYLAB 5 - w/ 48" x 48" Angle Boom, w/ 24" x 32" Tube Jib, w/ "AB" Ctw

Refer to the Tubular Jib notes for Open Throat Boom in the Crane Rating Manual before operating the crane.

Boom Length (ft)	Jib Length (ft)	Jib Load Radius (ft)	Jib Angle to Boom												Jib Load Radius (ft)				
			5 Degrees				15 Degrees				25 Degrees								
			Boom Angle (deg)	Jib Point Height (ft)	Over End Capacity (lbs)	Jib Capacity (lbs)	360° Jib Capacity (lbs)	Boom Angle (deg)	Jib Point Height (ft)	Over End Capacity (lbs)	Jib Capacity (lbs)	360° Jib Capacity (lbs)	Boom Angle (deg)	Jib Point Height (ft)		Over End Capacity (lbs)	Jib Capacity (lbs)	360° Jib Capacity (lbs)	
80	30	25.3	80.0	115.4	24,000 *	24,000 *													25.3
80	30	30	77.5	114.3	24,000 *	24,000 *			0										30
80	30	35	74.9	113.0	24,000 *	24,000 *	77.4	112.4	24,000 *	24,000 *	79.8	110.9	20,600 *	20,600 *					35
80	30	40	72.2	111.4	24,000 *	24,000 *	74.7	110.8	24,000 *	24,000 *	77.1	109.3	19,100 *	19,100 *					40
80	30	50	66.6	107.4	24,000 *	24,000 *	69.1	106.8	23,100 *	23,100 *	71.4	105.2	17,300 *	17,300 *					50
80	30	60	60.8	102.1	23,200	19,600	63.3	101.5	20,000 *	19,900	65.5	99.8	16,000 *	16,000 *					60
80	30	70	54.7	95.5	18,800	15,900	57.1	94.9	17,700 *	16,200	59.2	93.0	14,700 *	14,700 *					70
80	30	80	48.0	87.1	15,600	13,200	50.3	86.4	15,800	13,300	52.3	84.4	13,700 *	13,500					80
80	30	90	40.5	76.3	13,200	11,100	42.7	75.5	13,300	11,200									90
80	30	100	31.4	61.8	10,700 *	9,400													100
80	45	29.2	80.0	129.6	24,000 *	24,000 *													29.2
80	45	30	79.6	129.4	24,000 *	24,000 *													30
80	45	35	77.3	128.2	24,000 *	24,000 *													35
80	45	40	74.9	126.8	24,000 *	24,000 *	78.3	125.9	18,100 *	18,100 *									40
80	45	50	70.1	123.2	20,700 *	20,700 *	73.5	122.4	17,100 *	17,100 *	76.7	120.2	12,200 *	12,200 *					50
80	45	60	65.2	118.6	17,400 *	17,400 *	68.5	117.8	14,700 *	14,700 *	71.6	115.6	10,900 *	10,900 *					60
80	45	70	60.0	113.0	16,500 *	16,200	63.3	112.1	13,000 *	13,000 *	66.3	109.8	9,900 *	9,900 *					70
80	45	80	54.5	106.0	14,400 *	13,400	57.8	105.2	11,600 *	11,600 *	60.6	102.6	9,100 *	9,100 *					80
80	45	90	48.6	97.5	12,800 *	11,300	51.8	96.6	10,600 *	10,600 *	54.5	93.8	8,400 *	8,400 *					90
80	45	100	42.0	86.9	11,500 *	9,700	45.1	85.8	9,700 *	9,700 *	47.6	82.7	7,900 *	7,900 *					100
80	45	110	34.4	73.3	9,800 *	8,300	37.3	72.0	9,000 *	8,400									110
80	60	33.1	80.0	144.2	23,700 *	23,700 *													33.1
80	60	35	79.2	143.7	22,800 *	22,800 *													35
80	60	40	77.1	142.5	20,300 *	20,300 *													40
80	60	50	72.9	139.3	17,300 *	17,300 *	76.9	138.4	13,400 *	13,400 *									50
80	60	60	68.5	135.4	15,200 *	15,200 *	72.6	134.5	11,500 *	11,500 *	76.4	131.9	8,400 *	8,400 *					60
80	60	70	64.0	130.5	13,000 *	13,000 *	68.0	129.6	10,100 *	10,100 *	71.8	126.8	7,500 *	7,500 *					70
80	60	80	59.3	124.5	11,300 *	11,300 *	63.3	123.6	9,000 *	9,000 *	66.9	120.7	6,800 *	6,900 *					80
80	60	90	54.4	117.4	10,000 *	10,000 *	58.3	116.5	8,100 *	8,100 *	61.8	113.4	6,300 *	6,300 *					90
80	60	100	49.1	108.9	8,900 *	8,900 *	52.9	107.8	7,400 *	7,400 *	56.3	104.5	5,800 *	5,800 *					100

## 138 HYLAB 5 - w/ 48" x 48" Angle Boom, w/ 24" x 32" Tube Jib, w/ "AB" Cwt

Refer to the Tubular Jib notes for Open Throat Boom in the Crane Rating Manual before operating the crane.

Boom Length (ft)	Jib Length (ft)	Jib Load Radius (ft)	Jib Angle to Boom												Jib Load Radius (ft)			
			5 Degrees				15 Degrees				25 Degrees							
			Boom Angle (deg)	Jib Point Height (ft)	Over End Capacity (lbs)	Jib Capacity (lbs)	360° Jib Capacity (lbs)	Boom Angle (deg)	Jib Point Height (ft)	Over End Capacity (lbs)	Jib Capacity (lbs)	360° Jib Capacity (lbs)	Boom Angle (deg)	Jib Point Height (ft)		Over End Capacity (lbs)	Jib Capacity (lbs)	360° Jib Capacity (lbs)
80	60	110	43.3	98.5	8,100 *	8,100 *		47.0	97.3	6,800 *	6,800 *		50.2	93.6	5,500 *	5,500 *		110
80	60	120	36.7	85.6	7,400 *	7,400 *		40.3	84.2	6,300 *	6,300 *							120
80	60	130	28.7	68.6	6,800 *	6,400												130
90	30	27.0	80.0	125.3	24,000 *	24,000 *												27.0
90	30	30	78.6	124.6	24,000 *	24,000 *												30
90	30	35	76.1	123.4	24,000 *	24,000 *	78.5	122.8	24,000 *	24,000 *								35
90	30	40	73.7	121.9	24,000 *	24,000 *	76.0	121.3	24,000 *	24,000 *	78.2	119.8	19,700 *	19,700 *				40
90	30	50	68.7	118.3	24,000 *	24,000 *	71.0	117.7	23,900 *	23,800 *	73.1	116.1	17,400 *	17,400 *				50
90	30	60	63.5	113.6	23,000	19,400	65.7	113.0	21,100 *	19,700	67.8	111.3	16,500 *	16,500 *				60
90	30	70	58.0	107.7	18,500	15,700	60.2	107.1	18,700	15,900	62.2	105.3	15,300 *	15,300 *				70
90	30	80	52.2	100.4	15,400	12,900	54.4	99.7	15,600	13,100	56.2	97.8	14,200 *	13,300				80
90	30	90	45.8	91.3	12,900	10,800	47.9	90.6	13,100	11,000	49.7	88.4	13,200	11,100				90
90	30	100	38.6	79.8	11,000	9,200	40.7	78.9	11,100	9,300								100
90	30	110	30.0	64.5	8,700 *	7,800												110
90	45	30.9	80.0	139.5	24,000 *	24,000 *												30.9
90	45	35	78.2	138.5	24,000 *	24,000 *												35
90	45	40	76.1	137.2	24,000 *	24,000 *	79.2	136.3	18,700 *	18,700 *								40
90	45	50	71.7	133.9	21,000 *	21,000 *	74.8	133.1	17,300 *	17,300 *	77.8	130.8	12,600 *	12,600 *				50
90	45	60	67.1	129.8	18,300 *	18,300 *	70.2	128.9	15,400 *	15,400 *	73.1	126.6	11,300 *	11,300 *				60
90	45	70	62.4	124.6	16,800 *	16,000	65.5	123.7	13,600 *	13,600 *	68.3	121.3	10,200 *	10,200 *				70
90	45	80	57.5	118.4	15,000 *	13,200	60.5	117.5	12,200 *	12,200 *	63.2	114.9	9,400 *	9,400 *				80
90	45	90	52.3	110.8	13,200	11,100	55.2	109.9	11,100 *	11,100 *	57.8	107.2	8,700 *	8,700 *				90
90	45	100	46.6	101.7	11,300	9,400	49.5	100.7	10,200 *	9,600	52.0	97.7	8,200 *	8,200 *				100
90	45	110	40.3	90.5	9,700	8,000	43.1	89.3	9,500 *	8,200								110
90	45	120	33.0	76.2	8,000 *	6,900												120
90	60	34.8	80.0	154.0	22,800 *	22,800 *												34.8
90	60	35	79.9	154.0	22,700 *	22,700 *												35
90	60	40	78.0	152.8	20,800 *	20,800 *												40
90	60	50	74.0	149.9	17,400 *	17,400 *	77.8	148.9	13,800 *	13,800 *								50
90	60	60	70.0	146.2	16,100 *	16,000 *	73.8	145.3	11,900 *	12,000 *	77.4	142.6	8,600 *	8,600 *				60

## 138 HYLAB 5 - w/ 48" x 48" Angle Boom, w/ 24" x 32" Tube Jib, w/ "AB" Cwt

Refer to the Tubular Jib notes for Open Throat Boom in the Crane Rating Manual before operating the crane.

Boom Length (ft)	Jib Length (ft)	Jib Load Radius (ft)	Jib Angle to Boom												Jib Load Radius (ft)
			5 Degrees				15 Degrees				25 Degrees				
			Boom Angle (deg)	Jib Point Height (ft)	Over End Capacity (lbs)	Jib Capacity (lbs)	360° Jib Capacity (lbs)	Boom Angle (deg)	Jib Point Height (ft)	Over End Capacity (lbs)	Jib Capacity (lbs)	360° Jib Capacity (lbs)	Boom Angle (deg)	Jib Point Height (ft)	
90	60	70	65.9	141.7	13,800 *	13,800 *	69.6	140.7	10,500 *	10,500 *	73.1	138.0	7,700 *	7,700 *	70
90	60	80	61.6	136.3	12,000 *	12,000 *	65.3	135.3	9,400 *	9,400 *	68.7	132.4	7,100 *	7,100 *	80
90	60	90	57.1	129.9	10,600 *	10,600 *	60.8	128.8	8,500 *	8,500 *	64.1	125.8	6,500 *	6,500 *	90
90	60	100	52.4	122.2	9,500 *	9,500 *	56.0	121.1	7,700 *	7,700 *	59.2	117.9	6,000 *	6,000 *	100
90	60	110	47.3	113.1	8,600 *	8,200 *	50.8	112.0	7,100 *	7,100 *	53.9	108.4	5,700 *	5,700 *	110
90	60	120	41.7	102.2	7,900 *	7,100 *	45.1	100.9	6,600 *	6,600 *	48.0	96.9	5,400 *	5,400 *	120
90	60	130	35.3	88.6	7,300 *	6,200 *	38.6	87.1	6,200 *	6,200 *					130
90	60	140	27.7	70.9	5,600 *	5,400 *									140
100	30	28.8	80.0	135.1	24,000 *	24,000 *									28.8
100	30	30	79.4	134.8	24,000 *	24,000 *									30
100	30	35	77.2	133.7	24,000 *	24,000 *	79.4	133.1	24,000 *	24,000 *					35
100	30	40	75.0	132.4	24,000 *	24,000 *	77.1	131.8	24,000 *	24,000 *	79.2	130.2	20,100 *	20,100 *	40
100	30	50	70.4	129.0	24,000 *	24,000 *	72.5	128.4	23,800 *	23,800 *	74.5	126.8	17,900 *	17,900 *	50
100	30	60	65.6	124.8	22,700 *	19,100 *	67.8	124.1	21,100 *	19,500 *	69.7	122.5	17,000 *	17,000 *	60
100	30	70	60.7	119.4	18,200 *	15,400 *	62.8	118.8	18,500 *	15,700 *	64.6	117.0	15,800 *	15,800 *	70
100	30	80	55.5	112.9	15,100 *	12,700 *	57.6	112.3	15,300 *	12,900 *	59.3	110.4	14,700 *	13,100 *	80
100	30	90	50.0	105.0	12,700 *	10,500 *	52.0	104.3	12,800 *	10,700 *	53.6	102.3	13,000 *	10,900 *	90
100	30	100	43.9	95.3	10,700 *	8,900 *	45.8	94.5	10,900 *	9,000 *	47.4	92.2	11,000 *	9,100 *	100
100	30	110	37.1	83.1	9,200 *	7,500 *	38.9	82.2	9,300 *	7,600 *					110
100	30	120	28.8	67.0	7,000 *	6,400 *									120
100	45	32.7	80.0	149.3	24,000 *	24,000 *									32.7
100	45	35	79.0	148.8	24,000 *	24,000 *									35
100	45	40	77.0	147.6	24,000 *	24,000 *									40
100	45	50	73.0	144.5	21,100 *	21,100 *	75.9	143.6	17,300 *	17,300 *	78.7	141.4	12,800 *	12,800 *	50
100	45	60	68.8	140.7	18,300 *	18,400 *	71.7	139.8	16,100 *	16,100 *	74.4	137.5	11,600 *	11,600 *	60
100	45	70	64.5	136.0	16,900 *	15,700 *	67.3	135.1	14,300 *	14,300 *	70.0	132.7	10,500 *	10,500 *	70
100	45	80	60.0	130.3	15,200 *	12,900 *	62.8	129.4	12,800 *	12,800 *	65.4	126.8	9,700 *	9,700 *	80
100	45	90	55.3	123.5	12,900 *	10,800 *	58.1	122.6	11,700 *	11,100 *	60.5	119.9	9,000 *	9,000 *	90
100	45	100	50.3	115.4	11,000 *	9,100 *	53.0	114.4	10,700 *	9,300 *	55.4	111.6	8,500 *	8,500 *	100
100	45	110	44.9	105.7	9,400 *	7,800 *	47.5	104.6	9,600 *	8,000 *	49.7	101.5	8,000 *	8,000 *	110
100	45	120	38.8	93.9	8,200 *	6,700 *	41.4	92.6	8,300 *	6,800 *					120
100	45	130	31.8	78.9	6,500 *	5,700 *									130

## 138 HYLAB 5 - w/ 48" x 48" Angle Boom, w/ 24" x 32" Tube Jib, w/ "AB" Cwt

Refer to the Tubular Jib notes for Open Throat Boom in the Crane Rating Manual before operating the crane.

Boom Length (ft)	Jib Length (ft)	Jib Load Radius (ft)	Jib Angle to Boom												Jib Load Radius (ft)			
			5 Degrees				15 Degrees				25 Degrees							
			Boom Angle (deg)	Jib Point Height (ft)	Over End Capacity (lbs)	Jib Capacity (lbs)	360° Jib Capacity (lbs)	Boom Angle (deg)	Jib Point Height (ft)	Over End Capacity (lbs)	Jib Capacity (lbs)	360° Jib Capacity (lbs)	Boom Angle (deg)	Jib Point Height (ft)		Over End Capacity (lbs)	Jib Capacity (lbs)	360° Jib Capacity (lbs)
100	60	36.5	80.0	163.9	22,000 *	22,000 *												36.5
100	60	40	78.7	163.1	20,700 *	20,700 *												40
100	60	50	75.1	160.4	17,800 *	17,800 *	78.6	159.4	14,200 *	14,200 *								50
100	60	60	71.3	157.0	16,100 *	16,100 *	74.9	155.9	12,400 *	12,400 *	78.2	153.2	8,800 *	8,800 *				60
100	60	70	67.5	152.8	14,300 *	14,200 *	71.0	151.8	10,900 *	10,900 *	74.3	148.9	7,900 *	7,900 *				70
100	60	80	63.5	147.8	12,700 *	12,800 *	67.0	146.8	9,800 *	9,800 *	70.2	143.8	7,300 *	7,300 *				80
100	60	90	59.4	141.9	11,300 *	11,000 *	62.9	140.8	8,900 *	8,900 *	66.0	137.8	6,700 *	6,700 *				90
100	60	100	55.1	134.9	10,100 *	9,300 *	58.5	133.9	8,100 *	8,100 *	61.6	130.6	6,200 *	6,200 *				100
100	60	110	50.6	126.8	9,200 *	7,900 *	53.9	125.6	7,500 *	7,500 *	56.8	122.2	5,800 *	5,800 *				110
100	60	120	45.7	117.2	8,300 *	6,800 *	48.9	115.9	6,900 *	6,900 *	51.7	112.2	5,500 *	5,500 *				120
100	60	130	40.3	105.7	7,300 *	5,900 *	43.4	104.3	6,500 *	6,100 *	46.0	100.1	5,300 *	5,300 *				130
100	60	140	34.1	91.5	5,900 *	5,100 *	37.2	89.9	6,100 *	5,200 *								140
100	60	150	26.7	73.1	4,400 *	4,400 *												150
110	30	30.5	80.0	144.9	24,000 *	24,000 *												30.5
110	30	35	78.1	144.0	24,000 *	24,000 *												35
110	30	40	76.0	142.7	24,000 *	24,000 *	78.1	142.1	24,000 *	24,000 *								40
110	30	50	71.8	139.7	24,000 *	24,000 *	73.8	139.0	23,700 *	23,700 *	75.7	137.4	18,400 *	18,400 *				50
110	30	60	67.5	135.7	22,500 *	18,800 *	69.4	135.1	21,100 *	19,200 *	71.2	133.4	17,300 *	17,300 *				60
110	30	70	63.0	130.9	18,000 *	15,200 *	64.9	130.3	18,300 *	15,500 *	66.7	128.5	16,200 *	15,700 *				70
110	30	80	58.3	125.0	14,900 *	12,400 *	60.2	124.4	15,100 *	12,600 *	61.9	122.5	15,200 *	12,800 *				80
110	30	90	53.3	118.0	12,400 *	10,300 *	55.2	117.3	12,600 *	10,500 *	56.8	115.3	12,800 *	10,600 *				90
110	30	100	48.0	109.5	10,500 *	8,600 *	49.9	108.7	10,600 *	8,800 *	51.4	106.6	10,800 *	8,900 *				100
110	30	110	42.2	99.1	8,900 *	7,300 *	44.0	98.3	9,100 *	7,400 *	45.4	95.9	9,200 *	7,500 *				110
110	30	120	35.6	86.3	7,400 *	6,200 *	37.3	85.3	7,700 *	6,300 *								120
110	30	130	27.7	69.4	5,500 *	5,200 *												130

## 138 HYLAB 5 - w/ 48" x 48" Angle Boom, w/ 24" x 32" Tube Jib, w/ "AB" Ctw

Refer to the Tubular Jib notes for Open Throat Boom in the Crane Rating Manual before operating the crane.

Boom Length (ft)	Jib Length (ft)	Jib Load Radius (ft)	Jib Angle to Boom												Jib Load Radius (ft)				
			5 Degrees				15 Degrees				25 Degrees								
			Boom Angle (deg)	Jib Point Height (ft)	Over End Capacity (lbs)	Jib Capacity (lbs)	360° Jib Capacity (lbs)	Boom Angle (deg)	Jib Point Height (ft)	Over End Capacity (lbs)	Jib Capacity (lbs)	360° Jib Capacity (lbs)	Boom Angle (deg)	Jib Point Height (ft)		Over End Capacity (lbs)	Jib Capacity (lbs)	360° Jib Capacity (lbs)	
110	45	34.4	80.0	159.2	24,000 *	24,000 *													34.4
110	45	35	79.8	159.0	24,000 *	24,000 *													35
110	45	40	77.9	157.9	24,000 *	24,000 *													40
110	45	50	74.1	155.1	21,100 *	21,100 *	76.8	154.1	17,100 *	17,000 *	79.4	151.8	13,100 *	13,100 *					50
110	45	60	70.2	151.5	18,400 *	18,400 *	72.9	150.6	16,700 *	16,700 *	75.5	148.2	11,800 *	11,800 *					60
110	45	70	66.2	147.1	17,000 *	15,400 *	68.9	146.2	14,900 *	14,900 *	71.4	143.8	10,800 *	10,800 *					70
110	45	80	62.1	141.9	15,100 *	12,600 *	64.8	141.0	13,400 *	13,000 *	67.2	138.4	10,000 *	10,000 *					80
110	45	90	57.8	135.8	12,700 *	10,500 *	60.5	134.8	12,200 *	10,800 *	62.8	132.1	9,300 *	9,300 *					90
110	45	100	53.3	128.5	10,700 *	8,800 *	55.9	127.5	11,000 *	9,100 *	58.1	124.6	8,700 *	8,700 *					100
110	45	110	48.5	119.9	9,200 *	7,500 *	51.0	118.8	9,400 *	7,700 *	53.2	115.8	8,300 *	7,900 *					110
110	45	120	43.3	109.6	7,900 *	6,400 *	45.8	108.4	8,100 *	6,600 *	47.7	105.1	7,900 *	6,700 *					120
110	45	130	37.5	97.2	6,700 *	5,500 *	39.8	95.9	7,000 *	5,600 *									130
110	45	140	30.7	81.5	5,100 *	4,700 *													140
110	60	38.3	80.0	173.7	21,300 *	21,300 *													38.3
110	60	40	79.4	173.3	20,600 *	20,700 *													40
110	60	50	76.0	170.8	17,700 *	17,700 *	79.3	169.7	14,600 *	14,600 *									50
110	60	60	72.5	167.6	16,200 *	16,200 *	75.8	166.5	12,800 *	12,800 *	79.0	163.7	8,900 *	8,900 *					60
110	60	70	68.9	163.7	14,300 *	14,300 *	72.2	162.6	11,300 *	11,300 *	75.3	159.8	8,100 *	8,100 *					70
110	60	80	65.2	159.1	12,900 *	12,800 *	68.5	158.0	10,200 *	10,200 *	71.5	155.0	7,400 *	7,500 *					80
110	60	90	61.4	153.6	11,600 *	10,700 *	64.7	152.5	9,200 *	9,200 *	67.6	149.4	6,900 *	6,900 *					90
110	60	100	57.5	147.2	10,600 *	9,000 *	60.7	146.1	8,400 *	8,400 *	63.6	142.9	6,400 *	6,400 *					100
110	60	110	53.3	139.8	9,300 *	7,700 *	56.5	138.7	7,800 *	7,800 *	59.3	135.3	6,000 *	6,000 *					110
110	60	120	48.9	131.2	8,100 *	6,500 *	52.0	130.0	7,200 *	6,800 *	54.7	126.3	5,700 *	5,700 *					120
110	60	130	44.2	121.1	7,000 *	5,600 *	47.2	119.8	6,800 *	5,800 *	49.8	115.8	5,400 *	5,400 *					130
110	60	140	39.0	109.1	6,000 *	4,800 *	41.9	107.6	6,300 *	5,000 *									140
110	60	150	33.0	94.4	4,700 *	4,100 *	35.9	92.6	5,100 *	4,300 *									150
110	60	160	25.9	75.3	3,300 *	3,300 *													160

## 138 HYLAB 5 - w/ 48" x 48" Angle Boom, w/ 24" x 32" Tube Jib, w/ "AB" Cwt

Refer to the Tubular Jib notes for Open Throat Boom in the Crane Rating Manual before operating the crane.

Boom Length (ft)	Jib Length (ft)	Jib Load Radius (ft)	Jib Angle to Boom												Jib Load Radius (ft)			
			5 Degrees				15 Degrees				25 Degrees							
			Boom Angle (deg)	Jib Point Height (ft)	Over End Capacity (lbs)	Jib Capacity (lbs)	360° Jib Capacity (lbs)	Boom Angle (deg)	Jib Point Height (ft)	Over End Capacity (lbs)	Jib Capacity (lbs)	360° Jib Capacity (lbs)	Boom Angle (deg)	Jib Point Height (ft)		Over End Capacity (lbs)	Jib Capacity (lbs)	360° Jib Capacity (lbs)
120	30	32.3	80.0	154.8	24,000 *	24,000 *												32.3
120	30	35	78.9	154.2	24,000 *	24,000 *												35
120	30	40	77.0	153.1	24,000 *	24,000 *	78.9	152.4	24,000 *	24,000 *								40
120	30	50	73.1	150.2	24,000 *	24,000 *	74.9	149.6	23,700 *	23,700 *	76.7	147.9	18,800 *	18,800 *				50
120	30	60	69.0	146.6	22,200	18,600	70.9	146.0	21,000 *	19,000	72.6	144.3	17,200 *	17,100 *				60
120	30	70	64.9	142.1	17,700	14,900	66.7	141.5	18,000	15,200	68.4	139.7	16,600 *	15,500				70
120	30	80	60.6	136.8	14,600	12,100	62.4	136.1	14,900	12,400	64.0	134.3	15,100	12,600				80
120	30	90	56.1	130.4	12,100	10,000	57.9	129.7	12,400	10,200	59.4	127.7	12,600	10,400				90
120	30	100	51.4	122.8	10,200	8,300	53.1	122.0	10,400	8,500	54.6	120.0	10,600	8,700				100
120	30	110	46.3	113.7	8,700	7,000	48.0	112.9	8,800	7,100	49.3	110.7	8,900	7,300				110
120	30	120	40.7	102.8	7,400	5,900	42.3	101.9	7,500	6,000								120
120	30	130	34.4	89.3	5,800 *	5,000	35.9	88.3	6,000 *	5,000								130
120	30	140	26.7	71.7	4,100 *	4,100 *												140
120	45	36.1	80.0	169.0	24,000 *	24,000 *												36.1
120	45	40	78.6	168.2	24,000 *	24,000 *												40
120	45	50	75.1	165.5	21,100 *	21,100 *	77.7	164.6	17,500 *	17,500 *								50
120	45	60	71.5	162.2	18,500 *	18,500 *	74.0	161.2	16,700 *	16,700 *	76.4	158.8	12,100 *	12,100 *				60
120	45	70	67.8	158.1	17,000 *	15,200	70.3	157.2	15,100 *	15,100 *	72.6	154.7	11,100 *	11,100 *				70
120	45	80	64.0	153.3	14,900	12,400	66.5	152.4	13,700 *	12,800	68.7	149.8	10,300 *	10,300 *				80
120	45	90	60.0	147.6	12,400	10,200	62.5	146.7	12,600 *	10,600	64.7	144.0	9,600 *	9,600 *				90
120	45	100	55.9	141.0	10,500	8,600	58.3	140.0	10,700	8,800	60.5	137.2	9,000 *	9,000 *				100
120	45	110	51.6	133.2	8,900	7,200	53.9	132.2	9,100	7,500	56.0	129.2	8,500 *	7,700				110
120	45	120	46.9	124.1	7,600	6,100	49.3	123.0	7,800	6,300	51.2	119.8	8,000	6,500				120
120	45	130	41.9	113.4	6,600 *	5,200	44.2	112.1	6,700	5,300								130
120	45	140	36.3	100.4	5,200 *	4,400	38.4	99.0	5,600 *	4,500								140
120	45	150	29.7	84.1	3,900 *	3,700												150

### 138 HYLAB 5 - w/ 48" x 48" Angle Boom, w/ 24" x 32" Tube Jib, w/ "AB" Cwt

Refer to the Tubular Jib notes for Open Throat Boom in the Crane Rating Manual before operating the crane.

Boom Length (ft)	Jib Length (ft)	Jib Load Radius (ft)	Jib Angle to Boom												Jib Load Radius (ft)				
			5 Degrees				15 Degrees				25 Degrees								
			Boom Angle (deg)	Jib Point Height (ft)	Over End Capacity (lbs)	Jib Capacity (lbs)	360° Jib Capacity (lbs)	Boom Angle (deg)	Jib Point Height (ft)	Over End Capacity (lbs)	Jib Capacity (lbs)	360° Jib Capacity (lbs)	Boom Angle (deg)	Jib Point Height (ft)		Over End Capacity (lbs)	Jib Capacity (lbs)	360° Jib Capacity (lbs)	
120	60	40.0	80.0	183.6	20,600 *	20,600 *													40.0
120	60	50	76.8	181.2	17,800 *	17,700 *	79.9	180.1	15,000 *	15,000 *									50
120	60	60	73.5	178.2	16,200 *	16,200 *	76.6	177.1	13,100 *	13,100 *	79.6	174.2	9,100 *	9,100 *					60
120	60	70	70.1	174.5	14,400 *	14,400 *	73.2	173.4	11,700 *	11,700 *	76.2	170.5	8,300 *	8,300 *					70
120	60	80	66.7	170.2	12,900 *	12,600 *	69.8	169.1	10,500 *	10,500 *	72.7	166.1	7,600 *	7,600 *					80
120	60	90	63.1	165.1	11,700 *	10,400 *	66.2	164.0	9,600 *	9,600 *	69.0	160.9	7,100 *	7,100 *					90
120	60	100	59.5	159.2	10,600 *	8,700 *	62.5	158.1	8,800 *	8,800 *	65.3	154.8	6,600 *	6,600 *					100
120	60	110	55.7	152.4	9,100 *	7,400 *	58.7	151.2	8,100 *	7,700 *	61.4	147.8	6,200 *	6,200 *					110
120	60	120	51.7	144.6	7,800 *	6,300 *	54.6	143.3	7,500 *	6,500 *	57.2	139.7	5,900 *	5,900 *					120
120	60	130	47.4	135.5	6,700 *	5,300 *	50.3	134.2	7,000 *	5,600 *	52.8	130.3	5,600 *	5,600 *					130
120	60	140	42.8	124.9	5,800 *	4,500 *	45.7	123.5	6,000 *	4,700 *	48.0	119.3	5,300 *	4,900 *					140
120	60	150	37.8	112.4	4,700 *	3,900 *	40.6	110.8	5,100 *	4,000 *									150
120	60	160	32.1	97.1	3,500 *	3,300 *													160
130	30	34.0	80.0	164.6	24,000 *	24,000 *													34.0
130	30	35	79.6	164.4	24,000 *	24,000 *													35
130	30	40	77.8	163.4	24,000 *	24,000 *	79.6	162.7	24,000 *	24,000 *									40
130	30	50	74.1	160.7	24,000 *	23,900 *	75.9	160.0	23,500 *	23,500 *	77.5	158.4	19,200 *	19,200 *					50
130	30	60	70.4	157.3	21,900 *	18,300 *	72.1	156.7	21,000 *	18,700 *	73.7	155.0	17,500 *	17,600 *					60
130	30	70	66.6	153.2	17,400 *	14,600 *	68.3	152.5	17,800 *	15,000 *	69.8	150.8	17,000 *	15,300 *					70
130	30	80	62.6	148.2	14,300 *	11,800 *	64.3	147.6	14,600 *	12,100 *	65.8	145.8	14,900 *	12,400 *					80
130	30	90	58.5	142.4	11,900 *	9,700 *	60.2	141.7	12,100 *	10,000 *	61.6	139.8	12,300 *	10,200 *					90
130	30	100	54.2	135.5	9,900 *	8,000 *	55.8	134.8	10,100 *	8,200 *	57.2	132.8	10,300 *	8,400 *					100
130	30	110	49.6	127.4	8,400 *	6,700 *	51.3	126.6	8,600 *	6,900 *	52.6	124.5	8,700 *	7,000 *					110
130	30	120	44.7	117.8	7,100 *	5,600 *	46.3	117.0	7,300 *	5,700 *	47.5	114.6	7,400 *	5,800 *					120
130	30	130	39.4	106.4	5,800 *	4,700 *	40.9	105.4	6,100 *	4,800 *									130
130	30	140	33.2	92.3	4,400 *	3,900 *	34.7	91.1	4,600 *	4,000 *									140
130	30	150	25.8	73.9	2,900 *	2,900 *													150

## 138 HYLAB 5 - w/ 48" x 48" Angle Boom, w/ 24" x 32" Tube Jib, w/ "AB" Ctw

Refer to the Tubular Jib notes for Open Throat Boom in the Crane Rating Manual before operating the crane.

Boom Length (ft)	Jib Length (ft)	Jib Load Radius (ft)	Jib Angle to Boom												Jib Load Radius (ft)			
			5 Degrees				15 Degrees				25 Degrees							
			Boom Angle (deg)	Jib Point Height (ft)	Over End Capacity (lbs)	Jib Capacity (lbs)	360° Jib Capacity (lbs)	Boom Angle (deg)	Jib Point Height (ft)	Over End Capacity (lbs)	Jib Capacity (lbs)	360° Jib Capacity (lbs)	Boom Angle (deg)	Jib Point Height (ft)		Over End Capacity (lbs)	Jib Capacity (lbs)	360° Jib Capacity (lbs)
130	45	37.9	80.0	178.9	24,000 *	24,000 *												37.9
130	45	40	79.3	178.4	24,000 *	24,000 *												40
130	45	50	75.9	175.9	21,100 *	21,100 *	78.4	174.9	17,800 *	17,800 *								50
130	45	60	72.6	172.8	18,500 *	18,500 *	75.0	171.8	16,600 *	16,600 *	77.2	169.4	12,300 *	12,300 *				60
130	45	70	69.1	169.0	17,100 *	14,900	71.5	168.0	15,000 *	15,000 *	73.7	165.6	11,300 *	11,300 *				70
130	45	80	65.5	164.5	14,600	12,100	67.9	163.5	13,700 *	12,500	70.1	161.0	10,500 *	10,500 *				80
130	45	90	61.9	159.2	12,100	10,000	64.2	158.2	12,500	10,300	66.3	155.6	9,800 *	9,800 *				90
130	45	100	58.1	153.1	10,200	8,300	60.4	152.1	10,500	8,600	62.4	149.3	9,200 *	8,900				100
130	45	110	54.1	146.0	8,600	6,900	56.4	145.0	8,900	7,200	58.4	142.1	8,700 *	7,400				110
130	45	120	49.9	137.8	7,300	5,800	52.2	136.7	7,600	6,000	54.1	133.6	7,800	6,200				120
130	45	130	45.5	128.2	6,300	4,900	47.6	127.0	6,500	5,100	49.4	123.7	6,600	5,200				130
130	45	140	40.6	117.0	5,200 *	4,100	42.7	115.7	5,500 *	4,300								140
130	45	150	35.2	103.5	3,900 *	3,400	37.2	102.0	4,200 *	3,500								150
130	45	160	28.8	86.6	2,700 *	2,700 *												160
130	60	41.8	80.0	193.4	20,000 *	20,000 *												41.8
130	60	50	77.5	191.5	17,700 *	17,700 *												50
130	60	60	74.4	188.7	16,300 *	16,300 *	77.4	187.5	13,500 *	13,500 *								60
130	60	70	71.2	185.2	14,400 *	14,400 *	74.2	184.1	12,000 *	12,000 *	77.0	181.1	8,400 *	8,400 *				70
130	60	80	68.0	181.2	13,000 *	12,300	70.9	180.0	10,900 *	10,900 *	73.7	177.0	7,800 *	7,800 *				80
130	60	90	64.7	176.4	11,700 *	10,100	67.6	175.3	9,900 *	9,900 *	70.3	172.1	7,200 *	7,200 *				90
130	60	100	61.3	170.9	10,400	8,500	64.2	169.8	9,100 *	8,900	66.8	166.5	6,800 *	6,800 *				100
130	60	110	57.7	164.6	8,800	7,100	60.6	163.4	8,400 *	7,500	63.2	160.0	6,400 *	6,400 *				110
130	60	120	54.1	157.4	7,500	6,000	56.9	156.2	7,800 *	6,300	59.4	152.6	6,000 *	6,000 *				120
130	60	130	50.2	149.1	6,400	5,100	53.0	147.8	6,700	5,300	55.4	144.1	5,700 *	5,600				130
130	60	140	46.1	139.6	5,500	4,300	48.8	138.3	5,800	4,500	51.1	134.2	5,500 *	4,700				140
130	60	150	41.6	128.6	4,500 *	3,600	44.3	127.1	4,900 *	3,800	46.4	122.7	5,100	3,900				150
130	60	160	36.7	115.6	3,500 *	3,000	39.3	113.9	3,800 *	3,100								160
130	60	170	31.1	99.8	2,500 *	2,500 *												170



## 138 HYLAB 5 - w/ 48" x 48" Angle Boom, w/ 24" x 32" Tube Jib, w/ "AB" Cwt

Refer to the Tubular Jib notes for Open Throat Boom in the Crane Rating Manual before operating the crane.

Boom Length (ft)	Jib Length (ft)	Jib Load Radius (ft)	Jib Angle to Boom												Jib Load Radius (ft)	
			5 Degrees				15 Degrees				25 Degrees					
			Boom Angle (deg)	Jib Point Height (ft)	Over End Capacity (lbs)	Jib 360° Capacity (lbs)	Boom Angle (deg)	Jib Point Height (ft)	Over End Capacity (lbs)	Jib 360° Capacity (lbs)	Boom Angle (deg)	Jib Point Height (ft)	Over End Capacity (lbs)	Jib 360° Capacity (lbs)		
140	30	35.7	80.0	174.5	24,000 *	24,000 *										35.7
140	30	40	78.5	173.6	24,000 *	24,000 *										40
140	30	50	75.1	171.1	24,000 *	23,700	76.7	170.5	23,300 *	23,300 *	78.3	168.8	19,500 *	19,500 *		50
140	30	60	71.6	167.9	21,700	18,000	73.2	167.3	20,800 *	18,500	74.7	165.6	17,900 *	17,900 *		60
140	30	70	68.0	164.1	17,100	14,400	69.6	163.4	17,500	14,700	71.1	161.7	17,200 *	15,100		70
140	30	80	64.3	159.5	14,100	11,600	65.9	158.8	14,400	11,900	67.4	157.0	14,700	12,200		80
140	30	90	60.5	154.1	11,600	9,400	62.1	153.4	11,900	9,700	63.5	151.5	12,100	9,900		90
140	30	100	56.6	147.8	9,700	7,800	58.2	147.1	9,900	8,000	59.5	145.1	10,100	8,200		100
140	30	110	52.5	140.4	8,100	6,400	54.0	139.7	8,300	6,600	55.3	137.6	8,500	6,800		110
140	30	120	48.1	131.8	6,800	5,300	49.6	131.0	7,000	5,500	50.8	128.8	7,100	5,600		120
140	30	130	43.3	121.8	5,700 *	4,400	44.8	120.9	5,900 *	4,500	45.9	118.5	6,000	4,600		130
140	30	140	38.1	109.8	4,300 *	3,600	39.5	108.8	4,600 *	3,700						140
140	30	150	32.2	95.1	3,100 *	2,900										150
140	30	160	25.0	76.1	1,700 *	1,700 *										160
140	45	40.0	80.0	188.7	24,000	24,000 *										40.0
140	45	40	79.9	188.6	24,000 *	24,000 *										40
140	45	50	76.7	186.3	20,900 *	20,900 *	79.0	185.3	17,600 *	17,700 *						50
140	45	60	73.5	183.3	18,400 *	18,300	75.8	182.3	16,500 *	16,500 *	78.0	179.9	12,500 *	12,500 *		60
140	45	70	70.3	179.8	17,100 *	14,600	72.5	178.8	14,900 *	14,900 *	74.6	176.3	11,600 *	11,600 *		70
140	45	80	66.9	175.6	14,300	11,800	69.2	174.6	13,700 *	12,300	71.2	172.0	10,800 *	10,800 *		80
140	45	90	63.5	170.6	11,800	9,700	65.8	169.6	12,200	10,100	67.8	167.0	10,100 *	10,100 *		90
140	45	100	60.0	165.0	9,900	8,000	62.2	163.9	10,200	8,300	64.2	161.2	9,500 *	8,700		100
140	45	110	56.3	158.4	8,300	6,700	58.5	157.3	8,600	6,900	60.4	154.5	8,900	7,200		110
140	45	120	52.5	150.9	7,100	5,500	54.7	149.8	7,300	5,800	56.5	146.8	7,500	6,000		120
140	45	130	48.5	142.2	6,000	4,600	50.6	141.1	6,200	4,800	52.3	137.9	6,400	5,000		130
140	45	140	44.1	132.2	5,000 *	3,800	46.2	131.0	5,300 *	4,000	47.8	127.5	5,400	4,100		140
140	45	150	39.4	120.5	3,800 *	3,100	41.4	119.1	4,100 *	3,300						150
140	45	160	34.1	106.4	2,700 *	2,500	36.0	104.9	3,000 *	2,700						160
140	45	170	28.0	89.0	1,600 *	1,600 *										170

## 138 HYLAB 5 - w/ 48" x 48" Angle Boom, w/ 24" x 32" Tube Jib, w/ "AB" Cwt

Refer to the Tubular Jib notes for Open Throat Boom in the Crane Rating Manual before operating the crane.

Boom Length (ft)	Jib Length (ft)	Jib Load Radius (ft)	Jib Angle to Boom												Jib Load Radius (ft)	
			5 Degrees				15 Degrees				25 Degrees					
			Boom Angle (deg)	Jib Point Height (ft)	Over End Capacity (lbs)	Jib 360° Capacity (lbs)	Boom Angle (deg)	Jib Point Height (ft)	Over End Capacity (lbs)	Jib 360° Capacity (lbs)	Boom Angle (deg)	Jib Point Height (ft)	Over End Capacity (lbs)	Jib 360° Capacity (lbs)		
140	60	43.5	80.0	203.3	19,300 *	19,300 *										43.5
140	60	50	78.1	201.8	17,600 *	17,600 *										50
140	60	60	75.2	199.1	16,200 *	16,200 *	78.0	198.0	13,700 *	13,700 *						60
140	60	70	72.2	195.9	14,400 *	14,400 *	75.0	194.7	12,400 *	12,300 *	77.7	191.7	8,600 *	8,600 *		70
140	60	80	69.1	192.0	13,000 *	12,000	71.9	190.9	11,200 *	11,200 *	74.5	187.8	7,900 *	7,900 *		80
140	60	90	66.0	187.6	11,800 *	9,900	68.8	186.4	10,200 *	10,200 *	71.4	183.2	7,400 *	7,400 *		90
140	60	100	62.8	182.4	10,100	8,200	65.6	181.2	9,400 *	8,600	68.1	178.0	6,900 *	6,900 *		100
140	60	110	59.5	176.5	8,500	6,800	62.3	175.3	8,700 *	7,200	64.7	172.0	6,500 *	6,500 *		110
140	60	120	56.1	169.8	7,200	5,700	58.8	168.6	7,600	6,000	61.2	165.1	6,200 *	6,200 *		120
140	60	130	52.6	162.2	6,200	4,800	55.2	161.0	6,500	5,100	57.5	157.3	5,900 *	5,300		130
140	60	140	48.8	153.6	5,300 *	4,000	51.4	152.2	5,500	4,200	53.7	148.3	5,600 *	4,500		140
140	60	150	44.8	143.6	4,300 *	3,300	47.4	142.2	4,700 *	3,500	49.5	138.0	4,900	3,700		150
140	60	160	40.5	132.2	3,300 *	2,700	43.0	130.6	3,700 *	2,900						160
140	60	170	35.7	118.7	2,400 *	2,200	38.2	116.9	2,700 *	2,300						170
140	60	180	30.3	102.4	1,500 *	1,500 *										180
150	30	37.5	80.0	184.3	24,000 *	24,000 *										37.5
150	30	40	79.2	183.8	24,000 *	24,000 *										40
150	30	50	75.9	181.5	24,000 *	23,400	77.5	180.8	23,000 *	23,000 *	79.0	179.2	19,800	19,800 *		50
150	30	60	72.6	178.5	21,400	17,700	74.2	177.8	20,600 *	18,200	75.6	176.1	18,000	18,000 *		60
150	30	70	69.3	174.9	17,100	14,100	70.8	174.2	17,300	14,500	72.2	172.5	17,000	14,900		70
150	30	80	65.9	170.6	13,800	11,300	67.4	169.9	14,100	11,600	68.7	168.1	14,400	11,900		80
150	30	90	62.3	165.6	11,300	9,100	63.8	164.9	11,600	9,400	65.2	163.0	11,900	9,700		90
150	30	100	58.7	159.7	9,400	7,500	60.2	159.0	9,600	7,700	61.4	157.1	9,800	7,900		100
150	30	110	54.9	152.9	7,800	6,100	56.3	152.2	8,000	6,300	57.6	150.2	8,200	6,500		110
150	30	120	50.9	145.1	6,500	5,000	52.3	144.4	6,700	5,200	53.5	142.2	6,900	5,300		120
150	30	130	46.6	136.1	5,400 *	4,100	48.0	135.3	5,600	4,200	49.1	133.0	5,800	4,400		130
150	30	140	42.0	125.6	4,200 *	3,300	43.4	124.7	4,400 *	3,400						140
150	30	150	37.0	113.1	3,000 *	2,600	38.3	112.1	3,200 *	2,700						150
150	30	160	31.3	97.9	1,900 *	1,900 *										160

**This page intentionally  
left blank**

