

228 HYLAB

NEW!

130 USt (118 mt) Lattice Crawler Crane

- 45' – 235' (13.72 – 71.6 m) Main Boom (Tubular)
- 45' – 155' (13.72 – 47.24 m) Main Boom (Angle)
- 205' + 75' (62.4 + 22.8 m) Max. Boom + Jib Combo
- 44,565 lb (20 214 kg) Max. Line Pull
- 536 ft/min (163 m/min) Max. Line Speed
- Cummins QSB 6.7 Diesel Engine
- 80,000 lb (36 287 kg) Upper Cwt
- 26,500 lb (12 020 kg) Lower Cwt

ALL SHEAVES FEATURE
SEALED MAINTENANCE
FREE BARRINGS

FOLD DOWN
UPPER GUARDRAILS
AND CATWALKS



TRANSPORTATION

With side frames on the 228 HSL main transport load weighs under 120,000 lbs (54 500 kg). For markets that require lighter transport weights, the side frames can be removed for a total main load weight under 74,000 lbs (33 600 kg) while adding only one additional overall load.

QUICK REEVE

The open throat top section features a quick reeve design for the benefit of not having to remove the socket and wedge when changing parts of line.



VISION PACKAGE

Link-Belt offers the most comprehensive job site visibility package on the market. The 228 HSL features left side swing camera, rear view camera, and winch view camera. All feeding to a full color 7" display in the operator's cab.

OPTIONAL
THIRD DRUM!



CAR BODY JACKS

As a standard feature, the 228 HSL features 4 single stage car body jacks for side frame removal. These jacks offer an excellent ground clearance of 44" allowing the transport trailer to be backed under the machine with ease.



228^{HYLAB}



HIGHLY FUNCTIONAL AND COMFORTABLE CAB



HSL-1 full color RCL

- Wide, uncluttered entry
- Six-way adjustable seat
- Adjustable armrest console with pilot-operated single-axis controls
- Hydraulic pilot controls for variable hoist, swing and travel performance
- Variable hydraulic output from main pumps controlled by variable hand throttle for infinite control
- 7" full color, split screen capable camera display monitor

Hydraulic flow volume for precise control



**OPTIONAL
QUICK DRAW
CYLINDER**

FAST, EFFICIENT COUNTERWEIGHT REMOVAL

- 9-piece counterweight system is designed for easy handling and blended load-outs
- Proven HSL Series counterweight removal system — hydraulic counterweight cylinders remain with counterweight to reduce base machine transport weight
- Counterweight removal control located on work platform on the rear of the upper frame. Ladder included to access control station. Platform provides optimal viewing of counterweight assembly/disassembly.

228 HSL ATTACHMENTS ARE VERSATILE AND STRONG

Heavy-duty tube boom

- 40 - 235 ft (12.2 - 71.6 m) heavy-duty tubular boom
- Maximum tip height of tube boom + jib: 283.6 ft (85.3 m)

Fixed jib

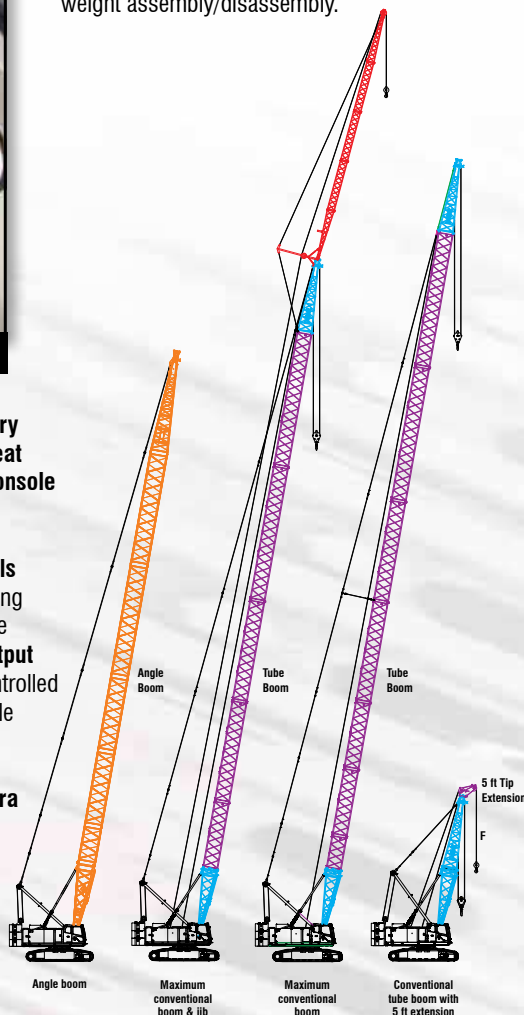
- 30 - 75 ft (9.14 - 22.86 m) fixed jib
- Offset angles at 5°, 15° and 25°

Heavy duty angle boom

- 45 - 155 ft (13.72 - 47.24 m)
- Designed for rough application and handling where job site and transportation conditions are less than ideal for tube boom

Auxiliary 5' tip extension

- Designed to use in place of jib to provide clearance between working hoist lines
- Maximum capacity is 18.5 tons (16.78 mt)



Link-Belt
CRANES

Link-Belt Construction Equipment Company
Lexington, Kentucky | www.linkbelt.com

© Link-Belt is a registered trademark.
Copyright 2017. All rights reserved.
We reserve the right to change designs
and specifications at any time.
Litho in U.S.A. 2/17 1923 #4508