

298

SERIES 2

250 USt (227mt) Lattice Crawler Crane

- 60' – 290' (18.2 - 88.3 m) Main boom attachment
- 30' – 100' (9.1 - 30.4 m) Fixed jib attachment
- 250' + 90' (76.2 - 27.4 m) Maximum fixed jib combination
- 180' + 195' (54.8 - 59.4 m) Maximum luffing jib combination
- 53,306 lbs (24 179 kg) Maximum line pull (main & auxiliary winch)
- Cummins QSL9 Tier 4 Final power
- 160,000 lbs (72.5 mt) Upper counterweight
- 60,000 lbs (27.2 mt) Car body counterweight
- Transports with full attachment in only 12 loads



Link-Belt
C R A N E S

COMBO TOP

The robust new top section of the 298 HSL Series 2 features an offset sheave design and functions as both the conventional configuration and luffing configuration boom top



NEW LUFFING JIB

The newly designed 298 HSL S2 luffing package is designed for fast, simple installation. (See reverse side for further detail)



BOOM WALKWAY

Link-Belt's next generation attachment features full length, wide boom walkways



VISION PACKAGE

The 298 HSL Series 2 offers the most comprehensive vision package that includes a winch view camera, 2 rear view cameras and a left side swing camera.



AUXILIARY TIP

With a maximum of capacity of 25 tons, the newly designed auxiliary tip extensions provides excellent capacities and load line separation during 2 load line operations.



LUFFING JIB TRANSPORT CONFIGURATION

The Luffing Jib Transport Configuration (as seen above) is a neat, compact package that includes the 25 ft (7.6m) luffing jib base section along with the front and rear luffing jib fan posts. The compact nature of this assembly maintains a transport height of less than 9 ft (2.8m)



ERECTION PENDANT

The rear post features an erection pendant that is utilized to hoist the rear post into position. The erection pendant is lowered to the ground with the helper crane when needing to be unhooked thus mitigating exposure to working at height.



'HOOK N' PIN' INSTALLATION

The luffing jib 'Hook n' Pin' installation procedure greatly simplifies the process for mating the luffing jib to the boom top. The 'Hook n' Pin' enables consistent pin hole alignment between the jib and boom top.



HOOK N' PIN INSTALLATION

TRANSFER LINKS

Transfer links allow for the consistent alignment of the rear post and the pin locations on luffing boom top section. The rear post simply rides the transfer links into pinning position.



SEMI BORES



SEMI-BORES

Semi-bored weldments on rear fan post (seen in blue above) mate easily to the boom top section with ease.



298

SERIES 2

250 Ust (227 mt) Lattice Crawler Crane

Luffing Erection Simplified

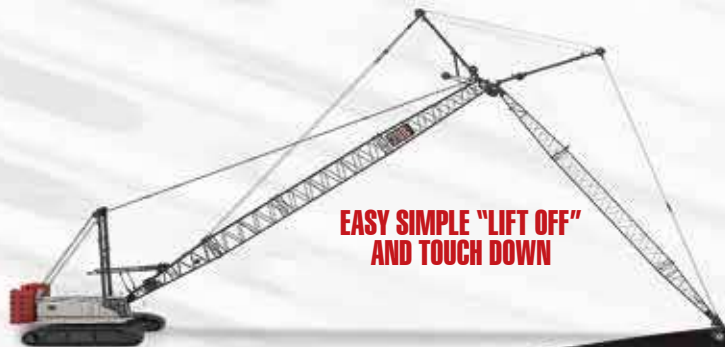


MAKING THE CONNECTION

Making backstay pendant and backstop tube connections can be easily completed as a result of the rear posts ability to rotate beyond vertical.



The rear post is supported in the vertical position by the back stop tubes during assembly.



EASY SIMPLE "LIFT OFF" AND TOUCH DOWN

Link-Belt
CRANES
Link-Belt Construction Equipment Company
Lexington, Kentucky | www.linkbelt.com

© Link-Belt is a registered trademark. Copyright 2017. All rights reserved. We reserve the right to change designs and specifications at any time. Litho in U.S.A. 2/17 1911 #4504

Courtesy of Crane.Market