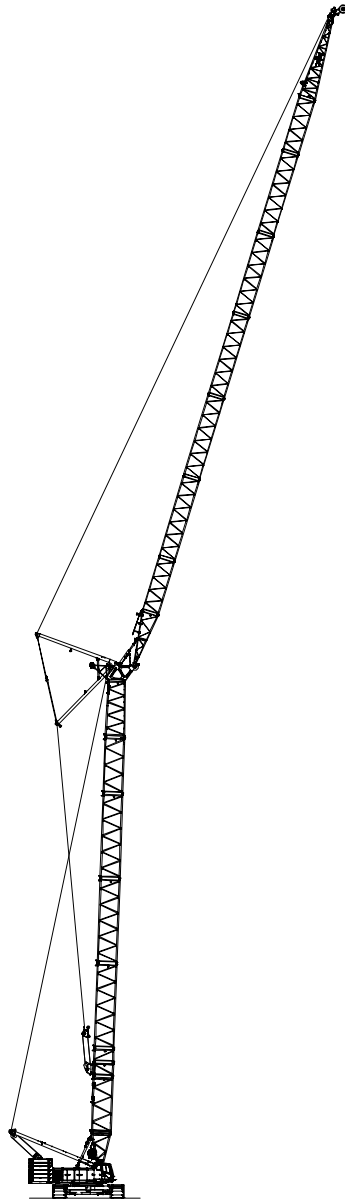


Technical Data

Luffing Capacities

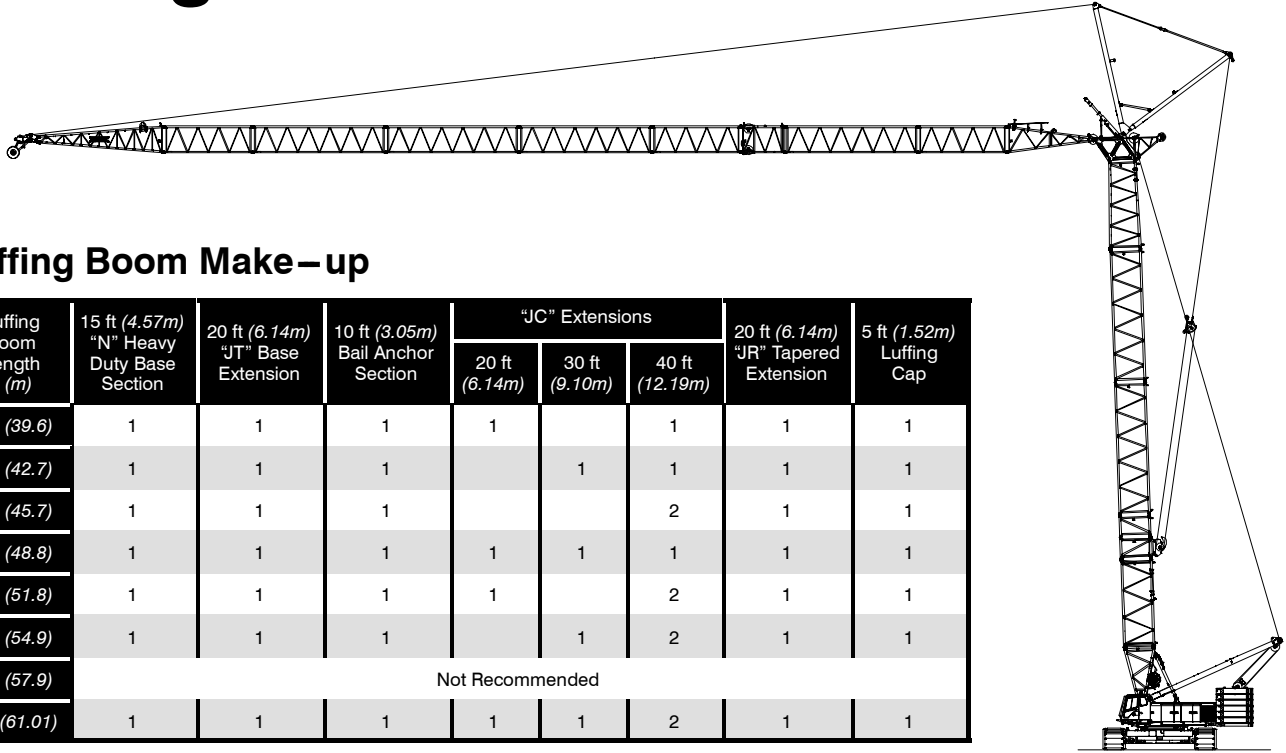
348

HYLAB5
Luffing Attachment



CAUTION: This material is supplied for reference use only. Operator must refer to in-cab Crane Rating Manual and Operator's Manual to determine allowable crane lifting capacities and assembly and operating procedures.

Luffing Attachment



Luffing Boom Make-up

Luffing Boom Length ft (m)	15 ft (4.57m) "N" Heavy Duty Base Section	20 ft (6.14m) "JT" Base Extension	10 ft (3.05m) Bail Anchor Section	"JC" Extensions			20 ft (6.14m) "JR" Tapered Extension	5 ft (1.52m) Luffing Cap
				20 ft (6.14m)	30 ft (9.10m)	40 ft (12.19m)		
130 (39.6)	1	1	1	1		1	1	1
140 (42.7)	1	1	1		1	1	1	1
150 (45.7)	1	1	1			2	1	1
160 (48.8)	1	1	1	1	1	1	1	1
170 (51.8)	1	1	1	1		2	1	1
180 (54.9)	1	1	1		1	2	1	1
190 (57.9)	Not Recommended							
200 (61.01)	1	1	1	1	1	2	1	1

Luffing Jib Make-up

Luffing Jib Length ft (m)	20 ft (6.14m) "F" Base Section	"FE" Luffing Jib Extensions				30 ft (9.14m) "G" Long Range Top Section
		10 ft (3.05m)	20 ft (6.14m)	30 ft (9.10m)	40 ft (12.19m)	
100 (30.5)	1	1			1	1
110 (33.5)	1		1		1	1
120 (36.6)	1			1	1	1
130 (39.6)	1				2	1
140 (42.7)	1		1	1	1	1
150 (45.7)	1	1	1	1	1	1
160 (48.8)	1			1	2	1
170 (51.8)	1				3	1
180 (54.9)	1		1	1	2	1
190 (57.9)	1	1	1	1	2	1
200 (61.0)	1			1	3	1
210 (60.0)	1	1		1	3	1
220 (67.1)	1		1	1	3	1
230 (70.1)	1	1	1	1	3	1
240 (73.2)	1	2	1	1	3	1

Notes:

- Capacities shown are in kips/metric tons (1 kip = 1,000 lb / 1 metric ton = 0.45 kips) and are not more than 75% of the tipping loads with the crane standing level on a firm supporting surface. A deduction must be made from these capacities for the weight of the hook block, hook ball, sling, grapple, load weighing devices, etc. When lifting from the luffing jib with the fixed jib installed, reduce capacities by values shown in the Crane Rating Manual. See Operator's Manual for all limitations when raising or lowering attachment.
 - The capacities in the shaded areas are based on structural strength. The capacities in the non-shaded areas are based on stability ratings.
 - All luffing attachment combinations require the maximum counterweight combination "ABC+A".
 - Load ratings are based on freely suspended loads and make no allowances for such factors as the effect of the wind on load, ground conditions, and operating speeds. The operator shall therefore reduce load ratings in order to take these conditions into account. Refer to the Crane Rating Manual for Wind Speed Restrictions.
 - Refer to the Crane Rating Manual for allowable attachment liftoff lengths and allowable working lengths at the various luffing boom angles.
 - The fixed jib has only one length [40 ft (12.19m)] and only one offset with respect to the luffing jib (5°).
 - These capacities are in compliance with ASME/ANSI B30.5 at date of manufacture.
 - These capacities apply only to the crane as originally manufactured and normally equipped by Link-Belt Construction Equipment Company.
- * See Link-Belt® website, www.linkbelt.com, for complete luffing attachment working range details and capacities including fixed jib and midfall.

LS-348H 5 -- 360 Degree Capacities -- Extended Gage -- Luffing Jib
80" X 95" Luffing Boom, 68" X 80" Luffing Jib, ABC + A Counterweight

Luffing Boom Length (ft)	Luffing Boom Length (m)	Luffing Jib Length (ft)	Luffing Jib Length (m)	Load Radius (ft)	Load Radius (m)	Luffing Boom Angle																				Load Radius (ft)				
						88 Degrees				85 Degrees				80 Degrees				75 Degrees				70 Degrees					65 Degrees			
						Luffing Jib Angle (deg)	Tip Height (ft)	Rated Capacity (kips)	Rated Capacity (mt)	Luffing Jib Angle (deg)	Tip Height (ft)	Rated Capacity (kips)	Rated Capacity (mt)	Luffing Jib Angle (deg)	Tip Height (ft)	Rated Capacity (kips)	Rated Capacity (mt)	Luffing Jib Angle (deg)	Tip Height (ft)	Rated Capacity (kips)	Rated Capacity (mt)	Luffing Jib Angle (deg)	Tip Height (ft)	Rated Capacity (kips)	Rated Capacity (mt)		Luffing Jib Angle (deg)	Tip Height (ft)	Rated Capacity (kips)	Rated Capacity (mt)
150	45.7	160	48.8	63	19.2	73.0	310.8	74.7	33.9	*																63				
150	45.7	160	48.8	70	21.3	70.2	308.4	71.0	32.2	*																70				
150	45.7	160	48.8	78	23.8						70.0	307.4	70.1	31.8	*											78				
150	45.7	160	48.8	80	24.4	66.4	304.4	66.2	30.0	*	69.4	306.8	69.3	31.4	*											80				
150	45.7	160	48.8	90	27.4	62.4	299.6	61.7	28.0	*	65.5	302.6	64.7	29.4	*											90				
150	45.7	160	48.8	100	30.5	58.3	293.9	57.4	26.0	*	61.5	297.6	60.5	27.5	*											100				
150	45.7	160	48.8	104	31.7											65.0	299.8	61.1	27.7							104				
150	45.7	160	48.8	110	33.5	53.9	287.2	53.5	24.3	*	57.3	291.7	56.5	25.6	*	62.7	297.0	56.5	25.6							110				
150	45.7	160	48.8	120	36.6	49.4	279.3	49.9	22.6	*	53.0	284.8	52.6	23.9	*	58.6	291.3	49.8	22.6							120				
150	45.7	160	48.8	129	39.3											60.0	290.1	41.0	18.6							129				
150	45.7	160	48.8	130	39.6	44.5	269.9	46.6	21.1	*	48.3	276.6	47.8	21.7	*	54.3	284.7	44.3	20.1							130				
150	45.7	160	48.8	140	42.7	39.1	258.7	42.9	19.5	*	43.3	266.9	43.0	19.5	*	49.7	276.9	39.6	18.0							140				
150	45.7	160	48.8	150	45.7	33.0	245.0	37.2	16.9	*	37.8	255.2	40.0	18.1	*	44.8	267.7	37.0	16.8							150				
150	45.7	160	48.8	153	46.6											51.0	275.8	33.9	15.4							153				
150	45.7	160	48.8	160	48.8	25.7	227.2	34.0	15.4	*	31.5	240.7	36.3	16.5	*	39.5	256.6	33.4	15.2			55.0	278.1	29.8	13.5	160				
150	45.7	160	48.8	170	51.8	15.5	200.6	30.4	13.8	*	23.8	221.7	33.1	15.0	*	33.5	243.1	30.4	13.8			52.0	273.2	27.8	12.6	170				
150	45.7	160	48.8	176	53.6	0.0	157.9	16.5	7.5	*						47.3	264.7	25.1	11.4			47.3	264.7	25.1	11.4	176				
150	45.7	160	48.8	180	54.9						12.2	191.0	29.4	13.3	*	26.3	225.7	27.7	12.6			50.0	264.2	21.1	9.6	180				
150	45.7	160	48.8	184	56.1						0.0	157.1	18.5	8.4	*							48.2	261.0	20.3	9.2	184				
150	45.7	160	48.8	190	57.9											16.5	200.1	25.3	11.5			43.2	251.2	18.3	8.3	190				
150	45.7	160	48.8	197	60.0											0.0	154.9	22.1	10.0	*						197				
150	45.7	160	48.8	200	61.0											19.5	205.0	20.9	9.5			37.7	239.5	16.5	7.5	200				
150	45.7	160	48.8	209	63.7											0.0	151.6	19.2	8.7			31.4	225.0	14.9	6.8	209				
150	45.7	160	48.8	210	64.0																	21.9	206.7	17.0	7.7	210				
150	45.7	160	48.8	220	67.1																	8.0	169.2	15.4	7.0	220				
150	45.7	160	48.8	222	67.7																	0.0	147.2	15.2	6.9	222				
150	45.7	160	48.8	230	70.1																					230				
150	45.7	160	48.8	233	71.0																		0.0	141.7	11.8	5.4	233			
150	45.7	180	54.9	68	20.7	73.0	330.0	61.9	28.1	*																68				
150	45.7	180	54.9	70	21.3	72.5	329.5	61.3	27.8	*																70				
150	45.7	180	54.9	80	24.4	69.1	326.0	57.2	26.0	*																80				
150	45.7	180	54.9	85	25.9						70.0	326.2	57.7	26.2	*											85				
150	45.7	180	54.9	90	27.4	65.7	321.8	53.5	24.3	*	68.4	324.4	55.9	25.4	*											90				
150	45.7	180	54.9	100	30.5	62.1	316.9	50.0	22.7	*	64.9	320.0	52.3	23.7	*											100				
150	45.7	180	54.9	110	33.5	58.5	311.2	46.7	21.2	*	61.3	315.0	49.0	22.2	*											110				
150	45.7	180	54.9	113	34.4											65.0	318.0	51.7	23.5	*						113				
150	45.7	180	54.9	120	36.6	54.6	304.6	43.5	19.7	*	57.6	309.1	45.9	20.8	*	62.4	314.3	48.6	22.1							120				
150	45.7	180	54.9	130	39.6	50.6	297.0	38.1	17.3	*	53.8	302.3	42.8	19.4	*	58.7	308.7	43.1	19.6							130				
150	45.7	180	54.9	139	42.4											60.0	307.4	36.9	16.7							139				
150	45.7	180	54.9	140	42.7	46.4	288.1	34.7	15.7	*	49.7	294.4	37.4	17.0	*	54.9	302.1	39.9	18.1							140				
150	45.7	180	54.9	150	45.7	41.8	277.8	31.6	14.3	*	45.4	285.2	34.1	15.5	*	50.9	294.6	35.9	16.3							150				
150	45.7	180	54.9	160	48.8	36.8	265.6	28.7	13.0	*	40.8	274.5	31.1	14.1	*	46.7	285.8	32.4	14.7							160				
150	45.7	180	54.9	165	50.3																					165				
150	45.7	180	54.9	170	51.8	31.1	250.7	26.0	11.8	*	35.6	261.8	28.3	12.8	*	42.2	275.6	29.4	13.3			55.0	294.5	25.2	11.4	170				
150	45.7	180	54.9	180	54.9	24.2	231.6	23.5	10.7	*	29.7	246.2	25.7	11.7	*	37.2	263.6	26.7	12.1			52.9	290.7	23.9	10.8	180				
150	45.7	180	54.9	189	57.6																					189				
150	45.7	180	54.9	190	57.9	14.6	203.2	21.0	9.5	*	22.5	225.8	23.2	10.5	*	31.5	248.9	24.3	11.0			49.6	278.8	17.1	7.8	190				
150	45.7	180	54.9	196	59.7	0.0	157.9	12.4	5.6	*																196				
150	45.7	180	54.9	200	61.0						11.5	193.1	20.7	9.4	*	24.8	230.2	22.2	10.1			39.7	262.1	17.6	8.0	200				
150	45.7	180	54.9	204	62.2						0.0	157.1	14.2	6.4	*											204				
150	45.7	180	54.9	210	64.0											15.5	202.9	20.2	9.2			40.7	258.9	13.8	6.3	210				
150	45.7	180	54.9	217	66.1											0.0	154.9	17.5	7.9	*						217				
150	45.7	180	54.9	220	67.1																					220				
150	45.7	180	54.9	229	69.8											18.4	208.4	16.4	7.4			28.3	232.5	14.4	6.5	229				
150	45.7	180	54.9	230	70.1											0.0	151.5	15.1	6.9							230				
150	45.7	180	54.9	240	73.2																					240				
150	45.7	180	54.9	242	73.8																					242				
150	45.7	180	54.9	250	76.2																					250				
150	45.7	180	54.9	253	77.1																					253				
150	45.7	200	61.0	74	22.6	73.0	349.1	51.0	23.1	*																74				
150	45.7	200	61.0	80	24.4	71.3	347.2	49.1	22.3	*																80				
150	45.7	200	61.0	90	27.4	68.2	343.6	46.0	20.9	*																90				
150	45.7	200	61.0	92	28.0						70.0	345.0	47.3	21.5	*											92				
150	45.7	200	61.0	100	30.5	65.1	339.2	43.0	19.5	*	67.6	341.9	44.9	20.4	*											100				
150	45.7	200	61.0	110	33.5	61.9	334.3	39.0	17.7	*	64.4	337.4	42.1	19.1	*											110				
150	45.7	200	61.0	120	36.6	58.6	328.6	35.5	16.1	*	61.2	332.3																		

LS-348H 5 -- 360 Degree Capacities -- Extended Gage -- Luffing Jib
80" X 95" Luffing Boom, 68" X 80" Luffing Jib, ABC + A Counterweight

Luffing Boom Length (ft)	Luffing Boom Length (m)	Luffing Jib Length (ft)	Luffing Jib Length (m)	Load Radius (ft)	Load Radius (m)	Luffing Boom Angle																				Load Radius (ft)				
						88 Degrees				85 Degrees				80 Degrees				75 Degrees				70 Degrees					65 Degrees			
						Luffing Jib Angle (deg)	Tip Height (ft)	Rated Capacity (kips)	Rated Capacity (mt)	Luffing Jib Angle (deg)	Tip Height (ft)	Rated Capacity (kips)	Rated Capacity (mt)	Luffing Jib Angle (deg)	Tip Height (ft)	Rated Capacity (kips)	Rated Capacity (mt)	Luffing Jib Angle (deg)	Tip Height (ft)	Rated Capacity (kips)	Rated Capacity (mt)	Luffing Jib Angle (deg)	Tip Height (ft)	Rated Capacity (kips)	Rated Capacity (mt)		Luffing Jib Angle (deg)	Tip Height (ft)	Rated Capacity (kips)	Rated Capacity (mt)
150	45.7	240	73.2	150	45.7	56.0	356.8	16.8	7.6	58.2	361.1	18.7	8.5	61.8	366.3	21.4	9.7	60.0	359.3	19.4	8.8	55.0	343.7	14.1	6.4	150				
150	45.7	240	73.2	160	48.8	53.1	349.7	14.6	6.6	55.4	354.5	16.4	7.4	59.0	360.6	19.1	8.7	59.8	358.9	19.2	8.7					160				
150	45.7	240	73.2	169	51.5													60.0	359.3	19.4	8.8					169				
150	45.7	240	73.2	170	51.8	50.0	341.8	12.5	5.7	52.4	347.3	14.2	6.4	56.2	354.3	17.0	7.7	59.8	358.9	19.2	8.7					170				
150	45.7	240	73.2	180	54.9	46.8	332.9	10.6	4.8	49.3	339.1	12.2	5.5	53.3	347.2	14.9	6.8	57.0	352.7	17.1	7.8					180				
150	45.7	240	73.2	190	57.9	43.5	322.9	8.8	4.0	46.1	330.0	10.3	4.7	50.3	339.4	12.9	5.9	54.1	345.9	15.2	6.9					190				
150	45.7	240	73.2	199	60.7													55.0	343.7	14.1	6.4					199				
150	45.7	240	73.2	200	61.0	39.9	311.7	7.1	3.2	42.7	319.8	8.5	3.9	47.1	330.6	10.9	4.9	51.1	338.2	13.4	6.1	54.8	343.1	14.1	6.4	200				
150	45.7	240	73.2	210	64.0	36.0	298.9	5.5	2.5	39.1	308.3	6.9	3.1	43.7	320.7	9.2	4.2	47.9	329.7	11.6	5.3	51.8	335.7	12.4	5.6	210				
150	45.7	240	73.2	220	67.1	31.7	284.0	4.0	1.8	35.1	295.0	5.3	2.4	40.1	309.6	7.5	3.4	44.6	320.1	9.8	4.4	48.7	327.3	11.0	5.0	220				
150	45.7	240	73.2	228	69.5																					228				
150	45.7	240	73.2	230	70.1	26.8	266.1	2.6	1.2	30.7	279.6	3.8	1.7	36.3	296.9	5.9	2.7	41.1	309.4	8.1	3.7	45.4	318.0	9.6	4.4	230				
150	45.7	240	73.2	240	73.2					25.6	260.9	2.5	1.1	32.0	282.1	4.5	2.0	37.4	297.1	6.5	2.9	42.0	307.6	8.4	3.8	240				
150	45.7	240	73.2	250	76.2									27.2	264.6	3.1	1.4	33.2	283.0	5.0	2.3	38.3	295.7	7.0	3.2	250				
150	45.7	240	73.2	260	79.2													28.6	266.3	3.6	1.6	34.2	282.0	5.5	2.5	260				
150	45.7	240	73.2	270	82.3													23.1	245.6	2.3	1.0	29.7	266.0	4.1	1.9	270				
150	45.7	240	73.2	280	85.3													24.5	246.5	2.8	1.3	30.6	263.8	2.8	1.3	280				
160	48.8	100	30.5	45	13.7	73.0	263.4	131.4	59.6																	45				
160	48.8	100	30.5	50	15.2	70.2	261.9	125.5	56.9																	50				
160	48.8	100	30.5	59	18.0					70.0	261.0	124.5	56.5													59				
160	48.8	100	30.5	60	18.3	64.0	257.7	109.4	49.6	69.2	260.5	122.6	55.6													60				
160	48.8	100	30.5	70	21.3	57.4	252.1	99.7	45.2	62.9	256.1	108.5	49.2													70				
160	48.8	100	30.5	80	24.4	50.3	244.8	92.5	42.0	56.3	250.2	95.2	43.2	65.0	255.3	88.8	40.3									80				
160	48.8	100	30.5	90	27.4	42.4	235.3	84.8	38.5	49.1	242.6	81.9	37.2	58.9	250.3	77.6	35.2									90				
160	48.8	100	30.5	100	30.5	33.0	222.3	74.6	33.8	41.0	232.6	72.1	32.7	51.9	243.4	67.6	30.7									100				
160	48.8	100	30.5	102	31.1													60.0	247.8	61.2	27.8					102				
160	48.8	100	30.5	110	33.5	20.2	202.4	63.9	29.0	31.3	218.9	63.7	28.9	44.2	234.4	59.3	26.9	54.4	242.5	55.0	25.0					110				
160	48.8	100	30.5	116	35.4	0.0	167.8	35.0	15.9																		116			
160	48.8	100	30.5	120	36.6					17.3	196.7	56.5	25.6	35.2	222.3	52.6	23.9	47.0	234.3	48.6	22.1					120				
160	48.8	100	30.5	122	37.2													55.0	238.4	43.5	19.7					122				
160	48.8	100	30.5	124	37.8					0.0	167.0	38.1	17.3														124			
160	48.8	100	30.5	130	39.6									23.5	204.5	47.0	21.3	38.6	223.5	43.4	19.7	49.4	232.4	39.8	18.1	130				
160	48.8	100	30.5	138	42.1					0.0	164.7	42.8	19.4														138			
160	48.8	100	30.5	140	42.7													28.1	208.3	40.0	18.1	41.4	222.6	36.8	16.7	140				
160	48.8	100	30.5	142	43.3																						142			
160	48.8	100	30.5	150	45.7													10.9	180.1	36.1	16.4	31.7	209.1	33.2	15.1	150				
160	48.8	100	30.5	152	46.3					0.0	161.2	35.3	16.0					0.0	161.2	35.3	16.0					152				
160	48.8	100	30.5	160	48.8													18.1	187.6	30.0	13.6	34.6	207.4	27.4	12.4	160				
160	48.8	100	30.5	165	50.3													0.0	156.5	28.5	12.9					165				
160	48.8	100	30.5	170	51.8																	22.6	189.1	24.8	11.3	170				
160	48.8	100	30.5	178	54.3																	0.0	150.7	22.9	10.4	178				
160	48.8	120	36.6	51	15.5	73.0	282.6	107.2	48.6																	51				
160	48.8	120	36.6	60	18.3	68.6	279.5	100.1	45.4																	60				
160	48.8	120	36.6	66	20.1					70.0	279.8	101.3	46.0													66				
160	48.8	120	36.6	70	21.3	63.3	275.1	90.1	40.9	67.7	278.0	98.0	44.5													70				
160	48.8	120	36.6	80	24.4	57.9	269.4	82.9	37.6	62.5	273.4	89.7	40.7													80				
160	48.8	120	36.6	89	27.1									65.0	273.4	77.6	35.2									89				
160	48.8	120	36.6	90	27.4	52.0	262.4	76.6	34.8	56.9	267.6	81.0	36.8	64.5	273.0	76.5	34.7									90				
160	48.8	120	36.6	100	30.5	45.7	253.7	72.4	32.8	51.0	260.3	71.3	32.4	59.1	267.6	66.4	30.1									100				
160	48.8	120	36.6	110	33.5	38.6	242.6	65.4	29.7	44.6	251.2	62.8	28.5	53.3	260.9	58.2	26.4									110				
160	48.8	120	36.6	112	34.1													60.0	265.1	52.4	23.8					112				
160	48.8	120	36.6	120	36.6	30.1	228.0	58.1	26.4	37.3	239.7	55.6	25.2	47.1	252.6	51.5	23.4	55.4	259.9	47.4	21.5					120				
160	48.8	120	36.6	130	39.6	18.5	205.8	49.3	22.4	28.5	224.2	49.7	22.5	40.2	242.1	45.9	20.8	49.3	252.2	42.2	19.1					130				
160	48.8	120	36.6	134	40.8																	55.0	254.8	38.2	17.3	134				
160	48.8	120	36.6	136	41.5	0.0	167.8	27.6	12.5																	136				
160	48.8	120	36.6	140	42.7					15.8	199.6	44.7	20.3	32.0	228.4	41.2	18.7	42.7	242.5	39.0	17.7	51.3	250.1	35.7	16.2	140				
160	48.8	120	36.6	144	43.9					0.0	167.0	30.2	13.7													144				
160	48.8	120	36.6	150	45.7									21.4	208.5	38.3	17.4	35.1	230.1	35.2	16.0	44.9	241.1	32.1	14.6	150				
160	48.8	120	36.6	155	47.2																					155				
160	48.8	120	36.6	158	48.2					0.0	164.7	35.1	15.9									50.0	242.6	27.7	12.6	158				
160	48.8	120	36.6	160	48.8									25.6	213.1	31.9	14.5	37.6	229.7	29.1	13.2	46.7	238.0	26.3	11.9	160				
160	48.8	120	36.6	170	51.8					9.9	181.9	28.9	13.1	28.9	181.9	28.9	13.1	28.9	214											

LS-348H 5 -- 360 Degree Capacities -- Extended Gage -- Luffing Jib
80" X 95" Luffing Boom, 68" X 80" Luffing Jib, ABC + A Counterweight

Luffing Boom Length (ft)	Luffing Boom Length (m)	Luffing Jib Length (ft)	Luffing Jib Length (m)	Load Radius (ft)	Load Radius (m)	Luffing Boom Angle																				Load Radius (ft)				
						88 Degrees				85 Degrees				80 Degrees				75 Degrees				70 Degrees					65 Degrees			
						Luffing Jib Angle (deg)	Tip Height (ft)	Rated Capacity (kips)	Rated Capacity (mt)	Luffing Jib Angle (deg)	Tip Height (ft)	Rated Capacity (kips)	Rated Capacity (mt)	Luffing Jib Angle (deg)	Tip Height (ft)	Rated Capacity (kips)	Rated Capacity (mt)	Luffing Jib Angle (deg)	Tip Height (ft)	Rated Capacity (kips)	Rated Capacity (mt)	Luffing Jib Angle (deg)	Tip Height (ft)	Rated Capacity (kips)	Rated Capacity (mt)		Luffing Jib Angle (deg)	Tip Height (ft)	Rated Capacity (kips)	Rated Capacity (mt)
160	48.8	120	36.6	198	60.4																				0.0	150.7	18.0	8.2	198	
160	48.8	140	42.7	57	17.4	73.0	301.7	88.9	40.3	*																			57	
160	48.8	140	42.7	60	18.3	71.8	300.8	87.0	39.5	*																			60	
160	48.8	140	42.7	70	21.3	67.4	297.1	80.9	36.7	*																			70	
160	48.8	140	42.7	72	21.9						70.0	298.6	83.7	38.0	*														72	
160	48.8	140	42.7	80	24.4	62.9	292.4	74.3	33.7	*	66.7	295.5	78.4	35.6	*														80	
160	48.8	140	42.7	90	27.4	58.2	286.8	68.9	31.3	*	62.1	290.7	73.3	33.3	*														90	
160	48.8	140	42.7	98	29.9											65.0	291.6	67.6	30.7										98	
160	48.8	140	42.7	100	30.5	53.2	279.9	64.4	29.2	*	57.4	284.9	68.1	30.9	*	63.8	290.3	65.2	29.6										100	
160	48.8	140	42.7	110	33.5	47.9	271.7	60.0	27.2	*	52.4	277.9	61.7	28.0	*	59.2	284.9	57.0	25.9										110	
160	48.8	140	42.7	120	36.6	42.1	261.7	56.0	25.4	*	47.0	269.4	54.6	24.8	*	54.3	278.4	50.3	22.8										120	
160	48.8	140	42.7	122	37.2											60.0	282.4	45.1	20.5										122	
160	48.8	140	42.7	130	39.6	35.6	249.3	50.9	23.1	*	41.1	259.1	48.7	22.1	*	49.1	270.5	44.8	20.3	56.0	277.3	40.9	18.6					130		
160	48.8	140	42.7	140	42.7	27.8	233.1	45.8	20.8	*	34.4	246.1	43.7	19.8	*	43.4	260.9	40.1	18.2	51.0	269.9	38.0	17.2					140		
160	48.8	140	42.7	145	44.2															55.0	271.2	32.6	14.8					145		
160	48.8	140	42.7	150	45.7	17.1	208.9	39.9	18.1	*	26.3	229.1	39.5	17.9	*	37.1	249.1	37.4	17.0	45.5	260.9	34.2	15.5	52.6	267.7	31.0	14.1	150		
160	48.8	140	42.7	156	47.5	0.0	167.8	21.7	9.8	*																		156		
160	48.8	140	42.7	160	48.8						14.6	202.3	36.9	16.7	*	29.6	233.9	33.9	15.4	39.4	250.0	30.9	14.0	47.2	259.3	27.9	12.7	160		
160	48.8	140	42.7	164	50.0	0.0	167.0	24.0	10.9	*																		164		
160	48.8	140	42.7	168	51.2																							168		
160	48.8	140	42.7	170	51.8											19.8	212.1	30.8	14.0	32.4	236.2	28.0	12.7	41.4	249.0	25.3	11.5	170		
160	48.8	140	42.7	178	54.3						0.0	164.7	28.2	12.8	*													178		
160	48.8	140	42.7	180	54.9											23.7	217.4	25.5	11.6	34.7	236.3	22.9	10.4	43.0	246.2	20.4	9.3	180		
160	48.8	140	42.7	190	57.9											9.2	183.6	23.2	10.5	26.7	219.5	20.8	9.4	36.6	234.2	18.4	8.3	190		
160	48.8	140	42.7	192	58.5											0.0	161.2	22.8	10.3									192		
160	48.8	140	42.7	200	61.0															15.3	193.4	18.9	8.6	29.1	218.7	16.7	7.6	200		
160	48.8	140	42.7	205	62.5															0.0	156.5	18.0	8.2					205		
160	48.8	140	42.7	210	64.0																							210		
160	48.8	140	42.7	218	66.4																							218		
160	48.8	160	48.8	63	19.2	73.0	320.8	73.1	33.2	*																		63		
160	48.8	160	48.8	70	21.3	70.3	318.5	69.7	31.6	*																		70		
160	48.8	160	48.8	79	24.1						70.0	317.4	68.6	31.1	*													79		
160	48.8	160	48.8	80	24.4	66.5	314.5	65.0	29.5	*	69.7	317.1	68.3	31.0	*													80		
160	48.8	160	48.8	90	27.4	62.5	309.8	60.8	27.6	*	65.8	313.0	63.8	28.9	*													90		
160	48.8	160	48.8	100	30.5	58.4	304.1	56.5	25.6	*	61.8	308.1	59.7	27.1	*													100		
160	48.8	160	48.8	106	32.3											65.0	309.7	58.9	26.7									106		
160	48.8	160	48.8	110	33.5	54.1	297.4	52.7	23.9	*	57.7	302.3	55.8	25.3	*	63.4	307.7	55.8	25.3									110		
160	48.8	160	48.8	120	36.6	49.5	289.6	49.2	22.3	*	53.4	295.4	52.0	23.6	*	59.3	302.2	49.1	22.3									120		
160	48.8	160	48.8	130	39.6	44.6	280.3	46.0	20.9	*	48.8	287.3	47.6	21.6	*	55.0	295.8	43.6	19.8									130		
160	48.8	160	48.8	132	40.2											60.0	299.7	39.9	18.1	*								132		
160	48.8	160	48.8	140	42.7	39.3	269.1	42.5	19.3	*	43.8	277.7	42.7	19.4	*	50.5	288.2	40.0	18.1	56.5	294.7	36.8	16.7					140		
160	48.8	160	48.8	150	45.7	33.2	255.5	37.0	16.8	*	38.3	266.3	39.8	18.1	*	45.7	279.2	36.4	16.5	52.1	287.5	33.1	15.0					150		
160	48.8	160	48.8	157	47.9															55.0	287.5	27.7	12.6					157		
160	48.8	160	48.8	160	48.8	26.0	237.9	33.8	15.3	*	32.1	252.1	36.1	16.4	*	40.5	268.5	32.9	14.9	47.5	279.0	29.8	13.5	53.6	285.2	26.7	12.1	160		
160	48.8	160	48.8	170	51.8	16.0	211.8	30.8	14.0	*	24.6	233.6	32.8	14.9	*	34.6	255.5	29.9	13.6	42.4	269.0	27.0	12.3	49.0	277.2	24.1	10.9	170		
160	48.8	160	48.8	176	53.6	0.0	167.8	16.8	7.6	*																		176		
160	48.8	160	48.8	180	54.9						13.6	204.7	30.0	13.6	*	27.7	239.0	27.2	12.3	36.8	256.9	24.5	11.1	44.0	267.7	21.8	9.9	180		
160	48.8	160	48.8	184	56.1						0.0	167.0	18.9	8.6	*													184		
160	48.8	160	48.8	190	57.9											18.5	215.5	24.8	11.3	30.3	241.8	22.2	10.1	38.6	256.3	19.7	8.9	190		
160	48.8	160	48.8	198	60.4											0.0	164.7	22.6	10.3	*								198		
160	48.8	160	48.8	200	61.0											22.1	221.5	20.3	9.2	32.4	242.3	17.9	8.1	40.1	253.8	15.5	7.0	200		
160	48.8	160	48.8	210	64.0											8.6	185.1	18.5	8.4	25.0	224.0	16.2	7.4	34.2	240.6	14.0	6.4	210		
160	48.8	160	48.8	212	64.6											0.0	161.2	18.1	8.2									212		
160	48.8	160	48.8	220	67.1															14.3	196.0	14.7	6.7	27.2	223.7	12.6	5.7	220		
160	48.8	160	48.8	225	68.6															0.0	156.5	14.0	6.4					225		
160	48.8	160	48.8	230	70.1																							230		
160	48.8	160	48.8	238	72.5																							238		
160	48.8	180	54.9	69	21.0	73.0	340.0	60.6	27.5	*																		69		
160	48.8	180	54.9	70	21.3	72.6	339.6	60.1	27.3	*																		70		
160	48.8	180	54.9	80	24.4	69.2	336.1	56.2	25.5	*																		80		
160	48.8	180	54.9	86	26.2						70.0	336.1	56.6	25.7	*													86		
160	48.8	180	54.9	90	27.4																									

LS-348H 5 -- 360 Degree Capacities -- Extended Gage -- Luffing Jib
 80" X 95" Luffing Boom, 68" X 80" Luffing Jib, ABC + A Counterweight

Luffing Boom Length (ft)	Luffing Boom Length (m)	Luffing Jib Length (ft)	Luffing Jib Length (m)	Load Radius (ft)	Load Radius (m)	Luffing Boom Angle																				Load Radius (ft)									
						88 Degrees				85 Degrees				80 Degrees				75 Degrees				70 Degrees					65 Degrees								
						Luffing Jib Angle (deg)	Tip Height (ft)	Rated Capacity (kips)	Rated Capacity (mt)	Luffing Jib Angle (deg)	Tip Height (ft)	Rated Capacity (kips)	Rated Capacity (mt)	Luffing Jib Angle (deg)	Tip Height (ft)	Rated Capacity (kips)	Rated Capacity (mt)	Luffing Jib Angle (deg)	Tip Height (ft)	Rated Capacity (kips)	Rated Capacity (mt)	Luffing Jib Angle (deg)	Tip Height (ft)	Rated Capacity (kips)	Rated Capacity (mt)		Luffing Jib Angle (deg)	Tip Height (ft)	Rated Capacity (kips)	Rated Capacity (mt)					
160	48.8	220	67.1	180	54.9	41.9	314.7	14.5	6.6	45.0	322.6	16.3	7.4	49.9	333.0	19.5	8.8	54.4	339.9	21.1	9.6											180			
160	48.8	220	67.1	190	57.9	37.8	302.7	12.6	5.7	41.2	312.0	14.3	6.5	46.4	324.0	17.3	7.8	51.1	332.3	18.8	8.5											190			
160	48.8	220	67.1	191	58.2																												191		
160	48.8	220	67.1	200	61.0	33.3	288.7	10.7	4.9	37.1	299.7	12.4	5.6	42.7	313.8	15.2	6.9	47.7	323.8	17.0	7.7	55.0	336.7	16.0	7.3							200			
160	48.8	220	67.1	210	64.0	28.2	271.9	9.0	4.1	32.5	285.3	10.6	4.8	38.7	302.2	13.3	6.0	44.0	314.0	15.3	6.9	48.8	321.9	12.8	5.8							210			
160	48.8	220	67.1	219	66.8																												219		
160	48.8	220	67.1	220	67.1	22.1	250.6	7.4	3.4	27.3	267.9	8.9	4.0	34.3	288.7	11.5	5.2	40.1	303.0	13.7	6.2	45.2	312.6	11.3	5.1	50.0	319.2	9.2	4.2			220			
160	48.8	220	67.1	230	70.1	13.6	219.6	5.8	2.6	20.9	245.6	7.3	3.3	29.4	272.6	9.7	4.4	35.9	290.2	12.3	5.6	41.4	302.0	10.0	4.5	46.2	309.4	7.8	3.5			230			
160	48.8	220	67.1	236	71.9	0.0	167.8	4.7	2.1																								236		
160	48.8	220	67.1	240	73.2					11.6	211.3	5.7	2.6	23.5	252.5	8.1	3.7	31.2	275.1	10.5	4.8	37.3	289.8	8.8	4.0	42.4	299.1	6.7	3.0			240			
160	48.8	220	67.1	244	74.4					0.0	167.0	4.9	2.2																				244		
160	48.8	220	67.1	250	76.2									15.8	224.5	6.6	3.0	25.7	256.6	8.9	4.0	32.7	275.5	7.7	3.5	38.4	287.4	5.7	2.6			250			
160	48.8	220	67.1	258	78.6									0.0	164.7	5.2	2.4																258		
160	48.8	220	67.1	260	79.2													18.9	232.3	7.4	3.4	27.6	258.3	6.7	3.0	34.0	273.8	4.8	2.2			260			
160	48.8	220	67.1	270	82.3													7.3	189.3	5.8	2.6	21.3	236.2	5.8	2.6	29.0	257.5	3.9	1.8			270			
160	48.8	220	67.1	272	82.9													0.0	161.2	5.5	2.5												272		
160	48.8	220	67.1	280	85.3																	12.2	202.9	5.0	2.3	23.1	237.0	3.2	1.5			280			
160	48.8	220	67.1	285	86.9																	0.0	156.6	4.6	2.1								285		
160	48.8	220	67.1	290	88.4																					15.2	208.2	2.5	1.1			290			
160	48.8	240	73.2	86	26.2	73.0	397.3	32.6	14.8																								86		
160	48.8	240	73.2	90	27.4	72.1	396.2	31.9	14.5																									90	
160	48.8	240	73.2	100	30.5	69.6	392.7	29.7	13.5																									100	
160	48.8	240	73.2	107	32.6					70.0	392.5	29.9	13.6																					107	
160	48.8	240	73.2	110	33.5	67.0	388.7	26.8	12.2	69.1	391.3	28.9	13.1																					110	
160	48.8	240	73.2	120	36.6	64.4	384.2	24.1	10.9	66.6	387.2	26.1	11.8																					120	
160	48.8	240	73.2	130	39.6	61.7	379.1	21.5	9.8	63.9	382.6	23.5	10.7																					130	
160	48.8	240	73.2	140	42.7	58.9	373.4	19.0	8.6	61.2	377.4	21.0	9.5	65.0	382.2	24.0	10.9																	140	
160	48.8	240	73.2	150	45.7	56.1	367.0	16.7	7.6	58.5	371.6	18.7	8.5	62.3	377.1	21.5	9.8																	150	
160	48.8	240	73.2	160	48.8	53.2	359.9	14.5	6.6	55.6	365.1	16.3	7.4	59.5	371.5	19.2	8.7																	160	
160	48.8	240	73.2	170	51.8	50.1	352.0	12.4	5.6	52.7	357.9	14.2	6.4	56.7	365.3	17.1	7.8																	170	
160	48.8	240	73.2	172	52.4													60.0	369.0	19.2	8.7														172
160	48.8	240	73.2	180	54.9	47.0	343.2	10.5	4.8	49.6	349.8	12.2	5.5	53.8	358.4	15.1	6.9	57.7	364.1	17.4	7.9													180	
160	48.8	240	73.2	190	57.9	43.6	333.3	8.7	3.9	46.4	340.8	10.3	4.7	50.8	350.6	13.0	5.9	54.8	357.4	15.5	7.0													190	
160	48.8	240	73.2	200	61.0	40.0	322.1	7.0	3.2	43.0	330.7	8.5	3.9	47.6	342.0	11.1	5.0	51.9	349.9	13.7	6.2													200	
160	48.8	240	73.2	203	61.9																	55.0	353.1	12.8	5.8										203
160	48.8	240	73.2	210	64.0	36.1	309.3	5.5	2.5	39.4	319.3	6.9	3.1	44.3	332.4	9.3	4.2	48.8	341.6	11.9	5.4	52.8	347.7	11.6	5.3									210	
160	48.8	240	73.2	220	67.1	31.9	294.5	4.0	1.8	35.5	306.2	5.3	2.4	40.8	321.5	7.7	3.5	45.5	332.4	10.1	4.6	49.8	339.7	10.1	4.6									220	
160	48.8	240	73.2	230	70.1	27.0	276.8	2.6	1.2	31.1	291.0	3.9	1.8	37.0	309.1	6.1	2.8	42.1	321.9	8.4	3.8	46.6	330.7	8.8	4.0									230	
160	48.8	240	73.2	232	70.7																					50.0	334.5	6.4	2.9						232
160	48.8	240	73.2	240	73.2					26.1	272.7	2.5	1.1	32.8	294.7	4.6	2.1	38.4	310.1	6.8	3.1	43.2	320.7	7.6	3.4	47.4	327.4	5.5	2.5					240	
160	48.8	240	73.2	250	76.2									28.1	277.7	3.2	1.5	34.3	296.5	5.3	2.4	39.6	309.3	6.5	2.9	44.1	317.7	4.5	2.0					250	
160	48.8	240	73.2	260	79.2													29.8	280.6	3.9	1.8	35.6	296.3	5.5	2.5	40.6	306.7	3.6	1.6					260	
160	48.8	240	73.2	270	82.3													24.6	261.1	2.6	1.2	31.3	281.2	4.5	2.0	36.7	294.2	2.7	1.2					270	
160	48.8	240	73.2	280	85.3																	26.4	263.1	3.2	1.5									280	
170	51.8	100	30.5	46	14.0	73.0	273.4	126.6	57.4																										46
170	51.8	100	30.5	50	15.2	70.4	272.0	120.3	54.6																										50
170	51.8	100	30.5	60	18.3	64.2	267.9	107.0	48.5	70.0	270.9	117.9	53.5																						60
170	51.8	100	30.5	70	21.3	57.7	262.3	97.1	44.1	63.5	266.5	105.5	47.9																						70
170	51.8	100	30.5	80	24.4	50.6	255.1	89.1	40.4	56.9	260.7	94.9	43.1																						80
170	51.8	100	30.5	82	25.0									65.0	265.2	85.5	38.8																		82
170	51.8	100	30.5	90	27.4	42.7	245.6	82.4	37.4	49.7	253.3	81.6	37.0																						90
170	51.8	100	30.5	100	30.5	33.4	232.9	74.6	33.8	41.7	243.5	71.9	32.6	53.1	254.5	66.8	30.3																		100
170	51.8	100	30.5	104	3																														

LS-348H 5 -- 360 Degree Capacities -- Extended Gage -- Luffing Jib
80" X 95" Luffing Boom, 68" X 80" Luffing Jib, ABC + A Counterweight

Luffing Boom Length (ft)	Luffing Boom Length (m)	Luffing Jib Length (ft)	Luffing Jib Length (m)	Load Radius (ft)	Load Radius (m)	Luffing Boom Angle																				Load Radius (ft)				
						88 Degrees				85 Degrees				80 Degrees				75 Degrees				70 Degrees					65 Degrees			
						Luffing Jib Angle (deg)	Tip Height (ft)	Rated Capacity (kips)	Rated Capacity (mt)	Luffing Jib Angle (deg)	Tip Height (ft)	Rated Capacity (kips)	Rated Capacity (mt)	Luffing Jib Angle (deg)	Tip Height (ft)	Rated Capacity (kips)	Rated Capacity (mt)	Luffing Jib Angle (deg)	Tip Height (ft)	Rated Capacity (kips)	Rated Capacity (mt)	Luffing Jib Angle (deg)	Tip Height (ft)	Rated Capacity (kips)	Rated Capacity (mt)		Luffing Jib Angle (deg)	Tip Height (ft)	Rated Capacity (kips)	Rated Capacity (mt)
170	51.8	100	30.5	180	54.9																					11.2	179.1	21.4	9.7	180
170	51.8	100	30.5	182	55.5																					0.0	159.7	21.0	9.5	182
170	51.8	120	36.6	52	15.8	73.0	292.6	104.7	47.5	*																				52
170	51.8	120	36.6	60	18.3	68.8	289.7	98.2	44.6	*																				60
170	51.8	120	36.6	66	20.1						70.0	289.7	99.0	44.9	*															66
170	51.8	120	36.6	70	21.3	63.5	285.2	89.1	40.4	*	68.2	288.4	96.4	43.7	*															70
170	51.8	120	36.6	80	24.4	58.1	279.6	81.8	37.1	*	62.9	283.8	88.6	40.2	*															80
170	51.8	120	36.6	90	27.4	52.2	272.7	75.3	34.2	*	57.4	278.1	80.6	36.6																90
170	51.8	120	36.6	91	27.7											65.0	283.3	74.9	34.0											91
170	51.8	120	36.6	100	30.5	45.9	264.0	70.0	31.8	*	51.6	270.9	71.0	32.2	*															100
170	51.8	120	36.6	110	33.5	38.8	253.1	64.9	29.4	*	45.2	262.1	62.4	28.3	*															110
170	51.8	120	36.6	114	34.7											60.0	274.7	49.7	22.5											114
170	51.8	120	36.6	120	36.6	30.4	238.6	58.0	26.3	*	38.0	250.8	55.3	25.1	*	48.2	264.0	50.8	23.0											120
170	51.8	120	36.6	130	39.6	19.0	216.8	50.4	22.9	*	29.3	235.8	49.4	22.4	*	41.4	253.9	45.3	20.6											130
170	51.8	120	36.6	136	41.5	0.0	177.8	27.9	12.7	*																				136
170	51.8	120	36.6	137	41.8																									137
170	51.8	120	36.6	140	42.7						17.2	212.5	44.4	20.1	*	33.6	240.9	40.6	18.4											140
170	51.8	120	36.6	145	44.2						0.0	177.0	30.7	13.9	*															145
170	51.8	120	36.6	150	45.7											23.6	222.5	37.8	17.2											150
170	51.8	120	36.6	159	48.5											1.1	176.9	34.1	15.5											159
170	51.8	120	36.6	160	48.8																									160
170	51.8	120	36.6	170	51.8																									170
170	51.8	120	36.6	174	53.0																									174
170	51.8	120	36.6	180	54.9																									180
170	51.8	120	36.6	188	57.3																									188
170	51.8	120	36.6	190	57.9																									190
170	51.8	120	36.6	200	61.0																									200
170	51.8	120	36.6	202	61.6																									202
170	51.8	140	42.7	58	17.7	73.0	311.7	86.8	39.4	*																				58
170	51.8	140	42.7	60	18.3	71.9	310.9	85.2	38.7	*																				60
170	51.8	140	42.7	70	21.3	67.5	307.2	78.5	35.6	*																				70
170	51.8	140	42.7	73	22.3						70.0	308.5	81.7	37.1	*															73
170	51.8	140	42.7	80	24.4	63.0	302.6	73.3	33.3	*	67.0	305.9	77.2	35.0	*															80
170	51.8	140	42.7	90	27.4	58.3	297.0	68.1	30.9	*	62.5	301.2	72.2	32.8	*															90
170	51.8	140	42.7	99	30.2											65.0	301.4	65.1	29.5											99
170	51.8	140	42.7	100	30.5	53.4	290.2	63.4	28.8	*	57.8	295.4	67.5	30.6	*	64.6	301.0	64.3	29.2											100
170	51.8	140	42.7	110	33.5	48.1	282.0	59.1	26.8	*	52.8	288.5	61.3	27.8	*	60.0	295.8	56.2	25.5											110
170	51.8	140	42.7	120	36.6	42.3	272.1	54.0	24.5	*	47.5	280.2	54.2	24.6	*	55.2	289.4	49.6	22.5											120
170	51.8	140	42.7	124	37.8																									124
170	51.8	140	42.7	130	39.6	35.8	259.8	48.5	22.0	*	41.6	270.0	48.3	21.9	*	50.0	281.8	44.1	20.0											130
170	51.8	140	42.7	140	42.7	28.1	243.8	43.8	19.9	*	35.0	257.4	43.4	19.7	*	44.4	272.5	39.5	17.9											140
170	51.8	140	42.7	149	45.4																									149
170	51.8	140	42.7	150	45.7	17.6	220.0	39.6	18.0	*	27.1	240.8	40.1	18.2	*	38.2	261.2	36.9	16.7											150
170	51.8	140	42.7	156	47.5	0.0	177.8	22.0	10.0	*																				156
170	51.8	140	42.7	160	48.8						15.9	215.4	36.7	16.7	*	31.0	246.7	33.4	15.2											160
170	51.8	140	42.7	165	50.3						0.0	177.0	24.4	11.1	*															165
170	51.8	140	42.7	170	51.8											21.8	226.5	30.3	13.7											170
170	51.8	140	42.7	172	52.4																									172
170	51.8	140	42.7	180	54.9											1.0	177.1	27.6	12.5											180
170	51.8	140	42.7	190	57.9																									190
170	51.8	140	42.7	194	59.1																									194
170	51.8	140	42.7	200	61.0																									200
170	51.8	140	42.7	208	63.4																									208
170	51.8	140	42.7	210	64.0																									210
170	51.8	140	42.7	220	67.1																									220
170	51.8	140	42.7	222	67.7																									222
170	51.8	160	48.8	63	19.2	73.0	330.8	71.4	32.4	*																				63
170	51.8	160	48.8	70	21.3	70.5	328.6	68.3	31.0	*																				70
170	51.8	160	48.8	80	24.4	66.6	324.7	63.9	29.0	*	70.0	327.3	67.1	30.4	*															80
170	51.8	160	48.8	90	27.4	62.7	319.9	59.7	27.1	*	66.2	323.3	62.8	28.5	*															90
170	51.8	160	48.8	100	30.5	58.6	314.3	55.6	25.2	*	62.2	318.5	58.8	26.7	*															100
170	51.8	160	48.8	108	32.9											65.0	319.5	56.7	25.7											108
170	51.8	160	48.8	110	33.5	54.3	307.7	51.8	23.5	*	58.1	312.8	55.0	25.0	*	64.1	318.4	55.0	25.0											110
170	51.8	160	48.8	120	36.6	49.7	299.8	48.4	22.0	*	53.7	306.0	51.3	23.3	*	60.0	313.1	48.4	22.0											

LS-348H 5 -- 360 Degree Capacities -- Extended Gage -- Luffing Jib
80" X 95" Luffing Boom, 68" X 80" Luffing Jib, ABC + A Counterweight

Luffing Boom Length (ft)	Luffing Boom Length (m)	Luffing Jib Length (ft)	Luffing Jib Length (m)	Load Radius (ft)	Load Radius (m)	Luffing Boom Angle																				Load Radius (ft)										
						88 Degrees				85 Degrees				80 Degrees				75 Degrees				70 Degrees					65 Degrees									
						Luffing Jib Angle (deg)	Tip Height (ft)	Rated Capacity (kips)	Rated Capacity (mt)	Luffing Jib Angle (deg)	Tip Height (ft)	Rated Capacity (kips)	Rated Capacity (mt)	Luffing Jib Angle (deg)	Tip Height (ft)	Rated Capacity (kips)	Rated Capacity (mt)	Luffing Jib Angle (deg)	Tip Height (ft)	Rated Capacity (kips)	Rated Capacity (mt)	Luffing Jib Angle (deg)	Tip Height (ft)	Rated Capacity (kips)	Rated Capacity (mt)		Luffing Jib Angle (deg)	Tip Height (ft)	Rated Capacity (kips)	Rated Capacity (mt)						
170	51.8	240	73.2	260	79.2									23.6	270.5	2.1	1.0	*	31.1	294.6	4.2	1.9	*	37.0	310.4	4.8	2.2					260				
170	51.8	240	73.2	270	82.3														26.1	276.2	2.8	1.3	*	32.9	296.1	3.9	1.8					270				
170	51.8	240	73.2	280	85.3																			28.1	279.1	3.1	1.4					280				
170	51.8	240	73.2	290	88.4																			22.6	258.0	2.3	1.0	*					290			
180	54.9	100	30.5	46	14.0	73.0	283.4	119.4	54.2	*																							46			
180	54.9	100	30.5	50	15.2	70.7	282.2	114.9	52.1	*																							50			
180	54.9	100	30.5	60	18.3	64.4	278.0	102.7	46.6	*	70.0	280.9	111.2	50.5	*																	60				
180	54.9	100	30.5	70	21.3	57.9	272.5	93.2	42.3	*	64.1	276.9	101.7	46.1	*																	70				
180	54.9	100	30.5	80	24.4	50.9	265.4	85.6	38.8	*	57.5	271.3	92.1	41.8	*																	80				
180	54.9	100	30.5	84	25.6											65.0	275.0	82.1	37.3													84				
180	54.9	100	30.5	90	27.4	43.0	256.0	79.2	35.9	*	50.4	264.0	81.3	36.9	*	61.2	272.0	76.1	34.5												90					
180	54.9	100	30.5	100	30.5	33.8	243.4	73.2	33.2	*	42.5	254.5	71.6	32.5	*	54.4	265.7	65.9	29.9													100				
180	54.9	100	30.5	107	32.6											60.0	267.1	54.8	24.9														107			
180	54.9	100	30.5	110	33.5	21.4	224.2	66.0	29.9	*	33.1	241.6	63.0	28.6	*	47.0	257.5	57.8	26.2													110				
180	54.9	100	30.5	117	35.7	0.0	187.8	35.8	16.2	*																							117			
180	54.9	100	30.5	120	36.6						20.4	221.7	55.8	25.3	*	38.5	246.6	51.2	23.2														120			
180	54.9	100	30.5	126	38.4						0.0	187.0	39.1	17.7	*																		126			
180	54.9	100	30.5	129	39.3																												129			
180	54.9	100	30.5	130	39.6											28.1	231.4	45.7	20.7					43.1	248.8	41.5	18.8						130			
180	54.9	100	30.5	140	42.7											10.8	203.0	41.0	18.6					33.9	236.2	38.4	17.4						140			
180	54.9	100	30.5	142	43.3											0.0	184.4	40.2	18.2														142			
180	54.9	100	30.5	150	45.7																													150		
180	54.9	100	30.5	157	47.9																			21.5	217.2	34.6	15.7							157		
180	54.9	100	30.5	160	48.8																			0.0	180.5	32.1	14.6							160		
180	54.9	100	30.5	170	51.8																													170		
180	54.9	100	30.5	172	52.4																													172		
180	54.9	100	30.5	180	54.9																													180		
180	54.9	100	30.5	186	56.7																													186		
180	54.9	120	36.6	52	15.8	73.0	302.6	102.1	46.3	*																							52			
180	54.9	120	36.6	60	18.3	68.9	299.8	95.2	43.2	*																								60		
180	54.9	120	36.6	67	20.4						70.0	299.7	96.4	43.7	*																			67		
180	54.9	120	36.6	70	21.3	63.7	295.4	85.9	39.0	*	68.6	298.7	94.2	42.7	*																			70		
180	54.9	120	36.6	80	24.4	58.3	289.9	78.4	35.6	*	63.4	294.2	85.4	38.7	*																			80		
180	54.9	120	36.6	90	27.4	52.5	282.9	72.5	32.9	*	57.9	288.6	77.7	35.3	*																			90		
180	54.9	120	36.6	92	28.0											65.0	293.1	72.1	32.7															92		
180	54.9	120	36.6	100	30.5	46.2	274.3	67.4	30.6	*	52.1	281.6	70.7	32.1	*	61.0	289.3	64.7	29.4														100			
180	54.9	120	36.6	110	33.5	39.1	263.5	61.9	28.1	*	45.7	272.9	62.0	28.1	*	55.3	283.1	56.6	25.7															110		
180	54.9	120	36.6	117	35.7																														117	
180	54.9	120	36.6	120	36.6	30.7	249.2	55.4	25.1	*	38.6	261.8	54.9	24.9	*	49.3	275.4	50.0	22.7					58.3	282.6	45.2	20.5							120		
180	54.9	120	36.6	130	39.6	19.5	227.8	50.0	22.7	*	30.2	247.2	49.0	22.2	*	42.7	265.7	44.6	20.2					52.5	275.7	40.2	18.2							130		
180	54.9	120	36.6	137	41.8	0.0	187.8	28.3	12.8	*																									137	
180	54.9	120	36.6	140	42.7						18.6	225.2	44.1	20.0	*	35.0	253.3	40.0	18.1					46.2	267.1	37.3	16.9							140		
180	54.9	120	36.6	141	43.0																														141	
180	54.9	120	36.6	146	44.5						0.0	187.0	31.1	14.1	*																			146		
180	54.9	120	36.6	150	45.7											25.6	236.2	37.3	16.9					39.2	256.3	33.6	15.2							150		
180	54.9	120	36.6	160	48.8											9.8	204.8	33.7	15.3					30.9	242.0	30.4	13.8							160		
180	54.9	120	36.6	162	49.4											0.0	184.4	33.1	15.0																162	
180	54.9	120	36.6	163	49.7																														163	
180	54.9	120	36.6	170	51.8																														170	
180	54.9	120	36.6	177	54.0																														177	
180	54.9	120	36.6	180	54.9																														180	
180	54.9	120	36.6	190	57.9																															190
180	54.9	120	36.6	192	58.5																															192
180	54.9	120	36.6	200	61.0																															200
180	54.9	120	36.6	206	62.8																															206
180	54.9	140	42.7	58	17.7	73.0	321.7	84.6	38.4	*																									58	
180	54.9	140	42.7	60	18.3	72.1	321.0	83.3	37.8	*																										60
180	54.9	140	42.7	70	21.3	67.7	317.3	76.9	34.9	*																										70
180	54.9	140	42.7	74	22.6						70.0	318.5	78.9																							

LS-348H 5 -- 360 Degree Capacities -- Extended Gage -- Luffing Jib
80" X 95" Luffing Boom, 68" X 80" Luffing Jib, ABC + A Counterweight

Luffing Boom Length (ft)	Luffing Boom Length (m)	Luffing Jib Length (ft)	Luffing Jib Length (m)	Load Radius (ft)	Load Radius (m)	Luffing Boom Angle																				Load Radius (ft)					
						88 Degrees				85 Degrees				80 Degrees				75 Degrees				70 Degrees					65 Degrees				
						Luffing Jib Angle (deg)	Tip Height (ft)	Rated Capacity (kips)	Rated Capacity (mt)	Luffing Jib Angle (deg)	Tip Height (ft)	Rated Capacity (kips)	Rated Capacity (mt)	Luffing Jib Angle (deg)	Tip Height (ft)	Rated Capacity (kips)	Rated Capacity (mt)	Luffing Jib Angle (deg)	Tip Height (ft)	Rated Capacity (kips)	Rated Capacity (mt)	Luffing Jib Angle (deg)	Tip Height (ft)	Rated Capacity (kips)	Rated Capacity (mt)		Luffing Jib Angle (deg)	Tip Height (ft)	Rated Capacity (kips)	Rated Capacity (mt)	
190	57.9	120	36.6	80	24.4	58.5	300.1	75.2	34.1	63.9	304.6	82.2	37.3													80					
190	57.9	120	36.6	90	27.4	52.7	293.2	69.6	31.6	58.4	299.1	74.8	33.9													90					
190	57.9	120	36.6	94	28.7									65.0	303.0	69.3	31.4									94					
190	57.9	120	36.6	100	30.5	46.4	284.7	64.8	29.4	52.6	292.2	69.3	31.4													100					
190	57.9	120	36.6	110	33.5	39.4	273.9	58.9	26.7	46.3	283.7	61.6	27.9													110					
190	57.9	120	36.6	120	36.6	31.1	259.7	52.9	24.0	39.3	272.9	54.5	24.7							60.0	294.1	44.4	20.1			120					
190	57.9	120	36.6	130	39.6	20.0	238.8	47.9	21.7	31.0	258.7	48.7	22.1							54.1	287.3	39.1	17.7			130					
190	57.9	120	36.6	137	41.8	0.0	197.8	28.6	13.0																	137					
190	57.9	120	36.6	140	42.7					19.8	237.6	43.7	19.8							47.9	279.2	36.4	16.5			140					
190	57.9	120	36.6	144	43.9																					144					
190	57.9	120	36.6	147	44.8					0.0	196.9	31.4	14.2													147					
190	57.9	120	36.6	150	45.7									27.4	249.5	36.7	16.7			41.1	269.0	32.8	14.9	51.5	278.5	28.8	13.1	150			
190	57.9	120	36.6	160	48.8									13.9	223.0	33.2	15.1			33.2	255.8	29.6	13.4	45.1	269.6	26.0	11.8	160			
190	57.9	120	36.6	164	50.0									0.0	194.2	32.0	14.5										164				
190	57.9	120	36.6	168	51.2																						168				
190	57.9	120	36.6	170	51.8															23.0	237.1	26.8	12.2	37.8	258.3	23.4	10.6	170			
190	57.9	120	36.6	180	54.9															0.0	190.2	24.3	11.0	29.2	243.2	21.2	9.6	180			
190	57.9	120	36.6	190	57.9																			17.0	219.7	19.2	8.7	190			
190	57.9	120	36.6	195	59.4															0.0								195			
190	57.9	120	36.6	200	61.0																					24.0	226.6	14.7	6.7	200	
190	57.9	120	36.6	210	64.0																					4.3	186.9	13.2	6.0	210	
190	57.9	140	42.7	58	17.7	73.0	331.7	82.3	37.3																		58				
190	57.9	140	42.7	60	18.3	72.2	331.1	81.3	36.9																			60			
190	57.9	140	42.7	70	21.3	67.9	327.5	75.2	34.1																				70		
190	57.9	140	42.7	75	22.9					70.0	328.4	77.0	34.9																75		
190	57.9	140	42.7	80	24.4	63.4	322.9	69.1	31.4	67.8	326.5	74.5	33.8																80		
190	57.9	140	42.7	90	27.4	58.7	317.4	63.8	28.9	63.3	322.0	69.3	31.4																90		
190	57.9	140	42.7	100	30.5	53.8	310.7	59.2	26.9	58.6	316.4	63.6	28.9																100		
190	57.9	140	42.7	103	31.4									65.0	321.1	60.2	27.3												103		
190	57.9	140	42.7	110	33.5	48.5	302.6	54.1	24.5	53.7	309.7	59.1	26.8																110		
190	57.9	140	42.7	120	36.6	42.8	292.9	48.8	22.1	48.4	301.7	53.5	24.3																120		
190	57.9	140	42.7	130	39.6	36.3	280.7	44.0	20.0	42.7	291.8	47.6	21.6							60.0	311.4	39.6	18.0	51.8	304.3	42.7	19.4	130			
190	57.9	140	42.7	140	42.7	28.7	265.1	39.8	18.1	36.3	279.7	42.7	19.4							54.9	304.7	35.2	16.0	46.4	295.6	39.7	18.0	140			
190	57.9	140	42.7	150	45.7	18.5	242.2	37.0	16.8	28.6	264.0	39.9	18.1							49.8	297.0	31.6	14.3						150		
190	57.9	140	42.7	156	47.5																				55.0	299.3	26.0	11.8	156		
190	57.9	140	42.7	157	47.9	0.0	197.8	22.5	10.2																				157		
190	57.9	140	42.7	160	48.8					18.4	241.0	36.1	16.4												52.7	296.1	24.8	11.3	160		
190	57.9	140	42.7	167	50.9					0.0	196.9	25.0	11.3																167		
190	57.9	140	42.7	170	51.8									25.4	254.2	29.3	13.3			37.9	276.2	25.8	11.7	47.4	287.7	22.3	10.1	170			
190	57.9	140	42.7	180	54.9									12.8	225.3	26.7	12.1			30.7	261.5	23.4	10.6	41.5	277.5	20.1	9.1	180			
190	57.9	140	42.7	184	56.1									0.0	194.3	25.7	11.7												184		
190	57.9	140	42.7	190	57.9															21.3	241.0	21.2	9.6	34.9	264.8	18.1	8.2	190			
190	57.9	140	42.7	200	61.0															0.0	190.2	19.3	8.8	27.0	248.2	16.4	7.4	200			
190	57.9	140	42.7	210	64.0															15.7	222.6	14.8	6.7	31.3	250.5	12.1	5.5	210			
190	57.9	140	42.7	215	65.5															0.0	184.7	14.0	6.4						215		
190	57.9	140	42.7	220	67.1																						22.2	230.7	10.8	4.9	220
190	57.9	140	42.7	230	70.1																					4.0	187.6	9.6	4.4	230	
190	57.9	160	48.8	64	19.5	73.0	350.8	67.9	30.8																					64	
190	57.9	160	48.8	70	21.3	70.7	348.8	65.3	29.6																					70	
190	57.9	160	48.8	80	24.4	66.9	345.0	61.2	27.8																					80	
190	57.9	160	48.8	82	25.0					70.0	347.2	63.8	28.9																	82	
190	57.9	160	48.8	90	27.4	62.9	340.3	57.4	26.0	66.9	344.0	60.6	27.5																	90	
190	57.9	160	48.8	100	30.5	58.8	334.7	53.4	24.2	62.9	339.3	56.9	25.8																	100	
190	57.9	160	48.8	110	33.5	54.6	328.2	48.7	22.1	58.8	333.8	53.3	24.2																	110	
190	57.9	160	48.8	111	33.8									65.0	339.2	52.5	23.8													111	
190	57.9	160	48.8	120	36.6	50.0	320.4	44.3	20.1	54.5	327.2	49.8	22.6																	120	
190	57.9	160	48.8	130	39.6	45.2	311.3	40.2	18.2	50.0	319.4	46.5	21.1																	130	
190	57.9	160	48.8	140	42.7	39.9	300.4	37.1	16.8	45.1	310.3	41.6	18.9							60.0	328.7	34.2	15.5	52.9	321.8	38.6	17.5	140			
190	57.9	160	48.8	150	45.7	33.9	287.1	33.8	15.3	39.8	299.4	39.0	17.7							55.6	322.1	30.5	13.8							150	
190	57.9	160	48.8	160	48.8	26.8	270.0	30.8	14.0	33.9	286.0	35.3	16.0							51.1	314.7	27.4	12.4							160	
190	57.9	160	48.8	167	50.9																				55.0	315.7	21.7	9.8	167		
190	57.9	160	48.8	170	51.8	17.3	245.3	28.3	12.8	26.8	268.9	32.1	14.6							53.7	313.6	21.0	9.5							170	

**LS-348H 5 -- 360 Degree Capacities -- Extended Gage -- Luffing Jib
80" X 95" Luffing Boom, 68" X 80" Luffing Jib, ABC + A Counterweight**

Luffing Boom Length (ft)	Luffing Boom Length (m)	Luffing Jib Length (ft)	Luffing Jib Length (m)	Load Radius (ft)	Load Radius (m)	Luffing Boom Angle																				Load Radius (ft)				
						88 Degrees				85 Degrees				80 Degrees				75 Degrees				70 Degrees					65 Degrees			
						Luffing Jib Angle (deg)	Tip Height (ft)	Rated Capacity (kips)	Rated Capacity (mt)	Luffing Jib Angle (deg)	Tip Height (ft)	Rated Capacity (kips)	Rated Capacity (mt)	Luffing Jib Angle (deg)	Tip Height (ft)	Rated Capacity (kips)	Rated Capacity (mt)	Luffing Jib Angle (deg)	Tip Height (ft)	Rated Capacity (kips)	Rated Capacity (mt)	Luffing Jib Angle (deg)	Tip Height (ft)	Rated Capacity (kips)	Rated Capacity (mt)		Luffing Jib Angle (deg)	Tip Height (ft)	Rated Capacity (kips)	Rated Capacity (mt)
200	61.0	100	30.5	47	14.3	73.0	303.4	105.9	48.0	*																47				
200	61.0	100	30.5	50	15.2	71.1	302.4	102.9	46.7	*																50				
200	61.0	100	30.5	60	18.3	64.9	298.3	94.0	42.6	*																60				
200	61.0	100	30.5	62	18.9						70.0	300.8	98.5	44.7	*											62				
200	61.0	100	30.5	70	21.3	58.4	292.9	85.5	38.8	*	65.2	297.6	92.0	41.7	*											70				
200	61.0	100	30.5	80	24.4	51.4	285.9	78.5	35.6	*	58.7	292.3	84.4	38.3	*											80				
200	61.0	100	30.5	88	26.8											65.0	294.7	77.0	34.9							88				
200	61.0	100	30.5	90	27.4	43.6	276.7	72.9	33.1	*	51.7	285.3	77.7	35.3	*	63.4	293.5	74.1	33.6							90				
200	61.0	100	30.5	100	30.5	34.5	264.4	67.2	30.5	*	43.9	276.2	70.9	32.2	*	56.8	287.7	64.2	29.1							100				
200	61.0	100	30.5	110	33.5	22.4	246.0	60.9	27.6	*	34.9	264.1	62.2	28.2	*	49.6	280.3	56.2	25.5							110				
200	61.0	100	30.5	112	34.1											60.0	286.4	48.9	22.2							112				
200	61.0	100	30.5	118	36.0	0.0	207.8	36.5	16.6	*																118				
200	61.0	100	30.5	120	36.6						23.1	246.0	55.1	25.0	*	41.6	270.5	49.7	22.5	54.7	281.4	44.3	20.1			120				
200	61.0	100	30.5	128	39.0						0.0	206.9	39.8	18.1	*											128				
200	61.0	100	30.5	130	39.6											32.0	257.1	44.3	20.1	47.3	273.3	39.4	17.9			130				
200	61.0	100	30.5	136	41.5															55.0	276.0	33.6	15.2			136				
200	61.0	100	30.5	140	42.7											18.6	236.0	39.7	18.0	38.9	262.6	36.6	16.6	52.2	273.0	32.2	14.6	140		
200	61.0	100	30.5	145	44.2											0.0	204.1	38.6	17.5							145				
200	61.0	100	30.5	150	45.7															28.5	247.6	32.9	14.9	44.5	264.1	28.9	13.1	150		
200	61.0	100	30.5	159	48.5															11.9	220.5	29.7	13.5	35.6	252.2	26.0	11.8	159		
200	61.0	100	30.5	160	48.8											0.0	199.8	28.9	13.1								160			
200	61.0	100	30.5	162	49.4															35.6	252.2	26.0	11.8	49.1	262.5	22.4	10.2	162		
200	61.0	100	30.5	170	51.8															24.0	234.7	23.5	10.7	41.0	252.6	20.1	9.1	170		
200	61.0	100	30.5	179	54.6															0.0	194.1	21.4	9.7					179		
200	61.0	100	30.5	180	54.9																				31.3	238.9	18.1	8.2	180	
200	61.0	100	30.5	190	57.9																				17.4	216.8	16.3	7.4	190	
200	61.0	100	30.5	195	59.4																				0.0	187.0	15.4	7.0	195	
200	61.0	120	36.6	53	16.2	73.0	322.6	92.2	41.8	*																	53			
200	61.0	120	36.6	60	18.3	69.3	320.0	86.7	39.3	*																	60			
200	61.0	120	36.6	69	21.0						70.0	319.6	85.6	38.8	*												69			
200	61.0	120	36.6	70	21.3	64.1	315.7	78.4	35.6	*	69.5	319.3	84.9	38.5	*												70			
200	61.0	120	36.6	80	24.4	58.6	310.3	72.0	32.7	*	64.3	315.0	78.5	35.6	*												80			
200	61.0	120	36.6	90	27.4	52.9	303.5	66.7	30.3	*	58.9	309.6	71.9	32.6	*												90			
200	61.0	120	36.6	96	29.3											65.0	312.8	66.6	30.2								96			
200	61.0	120	36.6	100	30.5	46.6	295.0	62.1	28.2	*	53.1	302.9	66.6	30.2	*	62.8	310.8	62.9	28.5								100			
200	61.0	120	36.6	110	33.5	39.6	284.3	55.9	25.4	*	46.9	294.5	61.2	27.8	*	57.3	305.1	55.0	25.0								110			
200	61.0	120	36.6	120	36.6	31.4	270.3	50.4	22.9	*	39.9	283.9	54.1	24.5	*	51.5	297.9	48.5	22.0								120			
200	61.0	120	36.6	122	37.2															60.0	303.7	41.8	19.0					122		
200	61.0	120	36.6	130	39.6	20.5	249.7	45.8	20.8	*	31.8	270.1	48.3	21.9	*	45.1	289.0	43.1	19.6	55.6	298.8	39.6	18.0				130			
200	61.0	120	36.6	138	42.1	0.0	207.8	28.8	13.1	*																	138			
200	61.0	120	36.6	140	42.7						21.0	249.9	43.4	19.7	*	37.8	277.7	40.0	18.1	49.6	291.1	35.4	16.1				140			
200	61.0	120	36.6	148	45.1						0.0	206.9	31.7	14.4	*												148			
200	61.0	120	36.6	150	45.7											29.2	262.6	36.1	16.4	42.9	281.5	31.9	14.5	55.5	290.5	27.7	12.6	150		
200	61.0	120	36.6	160	48.8											17.0	239.1	32.7	14.8	35.4	269.3	28.8	13.1	47.3	282.3	24.9	11.3	160		
200	61.0	120	36.6	165	50.3											0.0	204.1	30.9	14.0								165			
200	61.0	120	36.6	170	51.8															26.0	252.4	26.0	11.8	40.4	271.9	22.4	10.2	170		
200	61.0	120	36.6	172	52.4																						172			
200	61.0	120	36.6	180	54.9															10.9	222.4	23.6	10.7	32.4	258.3	20.2	9.2	180		
200	61.0	120	36.6	182	55.5											0.0	199.8	23.0	10.4								182			
200	61.0	120	36.6	190	57.9																						190			
200	61.0	120	36.6	199	60.7															21.9	238.8	18.3	8.3	37.3	259.7	15.2	6.9	199		
200	61.0	120	36.6	200	61.0											0.0	194.1	16.7	7.6								200			
200	61.0	120	36.6	210	64.0																				28.5	244.2	13.6	6.2	210	
200	61.0	120	36.6	215	65.5																				15.9	219.7	12.2	5.5	215	
200	61.0	120	36.6	215	65.5																				0.0	187.0	11.5	5.2	215	
200	61.0	140	42.7	58	17.7	73.0	341.7	79.4	36.0	*																	58			
200	61.0	140	42.7	60	18.3	72.4	341.2	78.6	35.7	*																	60			
200	61.0	140	42.7	70	21.3	68.0	337.6	72.4	32.8	*																	70			
200	61.0	140	42.7	76	23.2						70.0	338.4	74.6	33.8	*												76			
200	61.0	140	42.7	80	24.4	63.5	333.1	66.1	30.0	*	68.2	336.8	72.3	32.8	*												80			
200	61.0	140	42.7	90	27.4	58.8	327.6	61.0	27.7	*	63.7	332.4	66.6	30.2	*												90			
200	61.0	140	42.7	100	30.5	53.9	321.0	56.4	25.6	*	59.1	326.9	61.1	27.7	*												100			
200	61.0	140	42.7	104	31.7											65.0	331.0	57.9	26.3								104			
200	61.0	140	42.7	110	33.5	48.7	312.9	51.1	23.2	*	54.1	320.3	56.8	25.8	*	62.4	328.2	53.7	24.4								110			
200	61.0	140	42.7	120	36.6	43.0	303.2	46.2	21.0	*	48.9	312.4																		

LS-348H 5 -- 360 Degree Capacities -- Extended Gage -- Luffing Jib
80" X 95" Luffing Boom, 68" X 80" Luffing Jib, ABC + A Counterweight

Luffing Boom Length (ft)	Luffing Boom Length (m)	Luffing Jib Length (ft)	Luffing Jib Length (m)	Load Radius (ft)	Load Radius (m)	Luffing Boom Angle																				Load Radius (ft)											
						88 Degrees				85 Degrees				80 Degrees				75 Degrees				70 Degrees					65 Degrees										
						Luffing Jib Angle (deg)	Tip Height (ft)	Rated Capacity (kips)	Rated Capacity (mt)	Luffing Jib Angle (deg)	Tip Height (ft)	Rated Capacity (kips)	Rated Capacity (mt)	Luffing Jib Angle (deg)	Tip Height (ft)	Rated Capacity (kips)	Rated Capacity (mt)	Luffing Jib Angle (deg)	Tip Height (ft)	Rated Capacity (kips)	Rated Capacity (mt)	Luffing Jib Angle (deg)	Tip Height (ft)	Rated Capacity (kips)	Rated Capacity (mt)		Luffing Jib Angle (deg)	Tip Height (ft)	Rated Capacity (kips)	Rated Capacity (mt)							
200	61.0	140	42.7	140	42.7	29.0	275.7	38.6	17.5	*	36.9	290.9	42.3	19.2	47.4	307.1	39.0	17.7	56.2	316.2	34.3	15.6														140	
200	61.0	140	42.7	150	45.7	18.9	253.2	35.4	16.1	*	29.4	275.5	39.6	18.0	41.6	296.9	35.1	15.9	51.1	308.8	30.7	13.9													150		
200	61.0	140	42.7	158	48.2	0.0	207.8	22.8	10.3	*																									158		
200	61.0	140	42.7	159	48.5																														159		
200	61.0	140	42.7	160	48.8						19.5	253.5	35.9	16.3	34.9	284.2	31.8	14.4	45.7	299.9	27.7	12.6	55.0	308.7	23.9	10.8									160		
200	61.0	140	42.7	168	51.2						0.0	206.9	25.2	11.4	*																				168		
200	61.0	140	42.7	170	51.8										27.0	267.6	28.8	13.1	39.6	289.1	25.0	11.3	49.3	300.1	21.2	9.6									170		
200	61.0	140	42.7	180	54.9										15.7	242.0	26.1	11.8	32.7	275.4	22.6	10.3	43.6	290.6	19.1	8.7									180		
200	61.0	140	42.7	185	56.4										0.0	204.1	24.8	11.3																		185	
200	61.0	140	42.7	190	57.9																															190	
200	61.0	140	42.7	200	61.0																															200	
200	61.0	140	42.7	202	61.6																															202	
200	61.0	140	42.7	210	64.0																															210	
200	61.0	140	42.7	219	66.8																															219	
200	61.0	140	42.7	220	67.1																															220	
200	61.0	140	42.7	230	70.1																															230	
200	61.0	140	42.7	235	71.6																															235	
200	61.0	160	48.8	64	19.5	73.0	360.8	65.5	29.7	*																										64	
200	61.0	160	48.8	70	21.3	70.9	359.0	63.3	28.7	*																											70
200	61.0	160	48.8	80	24.4	67.0	355.1	59.1	26.8	*																											80
200	61.0	160	48.8	83	25.3						70.0	357.2	62.1	28.2	*																						83
200	61.0	160	48.8	90	27.4	63.1	350.5	54.7	24.8	*	67.2	354.3	59.4	27.0	*																					90	
200	61.0	160	48.8	100	30.5	59.0	344.9	50.2	22.8	*	63.3	349.7	55.8	25.3	*																					100	
200	61.0	160	48.8	110	33.5	54.7	338.4	45.9	20.8	*	59.2	344.2	51.9	23.5	*																					110	
200	61.0	160	48.8	113	34.4											65.0	349.1	50.5	22.9																	113	
200	61.0	160	48.8	120	36.6	50.2	330.7	41.8	19.0	*	54.9	337.8	48.4	22.0	*	62.1	345.5	46.0	20.9																	120	
200	61.0	160	48.8	130	39.6	45.4	321.6	38.7	17.6	*	50.4	330.1	45.2	20.5	*	58.0	339.8	40.7	18.5																	130	
200	61.0	160	48.8	140	42.7	40.1	310.8	35.2	16.0	*	45.6	321.1	41.2	18.7	*	53.7	333.0	37.9	17.2																	140	
200	61.0	160	48.8	142	43.3																																142
200	61.0	160	48.8	150	45.7	34.1	297.6	32.1	14.6	*	40.3	310.4	38.4	17.4	*	49.1	325.0	34.1	15.5																	150	
200	61.0	160	48.8	160	48.8	27.1	280.7	29.3	13.3	*	34.4	297.3	34.8	15.8	*	44.2	315.6	30.7	13.9																	160	
200	61.0	160	48.8	170	51.8	17.7	256.4	27.0	12.3	*	27.4	280.6	31.4	14.2	*	38.8	304.2	27.8	12.6																	170	
200	61.0	160	48.8	178	54.3	0.0	207.8	17.8	8.1	*																										178	
200	61.0	160	48.8	180	54.9						18.2	256.8	28.5	12.9	*	32.6	290.3	25.2	11.4																	180	
200	61.0	160	48.8	188	57.3						0.0	206.9	20.0	9.1	*																					188	
200	61.0	160	48.8	190	57.9											25.2	272.2	22.9	10.4																	190	
200	61.0	160	48.8	197	60.0																															197	
200	61.0	160	48.8	200	61.0											14.7	244.7	20.8	9.4																	200	
200	61.0	160	48.8	205	62.5											0.0	204.1	19.8	9.0																	205	
200	61.0	160	48.8	210	64.0																																210
200	61.0	160	48.8	220	67.1																																220
200	61.0	160	48.8	222	67.7																																222
200	61.0	160	48.8	230	70.1																																230
200	61.0	160	48.8	239	72.8																																239
200	61.0	160	48.8	240	73.2																																240
200	61.0	160	48.8	250	76.2																																250
200	61.0	160	48.8	255	77.7																																255

LS-348H 5 -- 360 Degree Capacities -- Retracted Gage -- Luffing Jib
 80" X 95" Luffing Boom, 68" X 80" Luffing Jib, ABC + A Counterweight
 Luffing Boom Angle

Luffing Boom Length (ft)	Luffing Boom Length (m)	Luffing Jib Length (ft)	Luffing Jib Length (m)	Load Radius (ft)	Load Radius (m)	88 Degrees				85 Degrees				80 Degrees				75 Degrees				70 Degrees				65 Degrees				Load Radius (ft)		
						Luffing Jib Angle (deg)	Tip Height (ft)	Rated Capacity (kips)	Rated Capacity (mt)	Luffing Jib Angle (deg)	Tip Height (ft)	Rated Capacity (kips)	Rated Capacity (mt)	Luffing Jib Angle (deg)	Tip Height (ft)	Rated Capacity (kips)	Rated Capacity (mt)	Luffing Jib Angle (deg)	Tip Height (ft)	Rated Capacity (kips)	Rated Capacity (mt)	Luffing Jib Angle (deg)	Tip Height (ft)	Rated Capacity (kips)	Rated Capacity (mt)	Luffing Jib Angle (deg)	Tip Height (ft)	Rated Capacity (kips)	Rated Capacity (mt)			
130	39.6	100	30.5	44	13.4	73.0	233.5	140.1	63.6																							44
130	39.6	100	30.5	50	15.2	69.6	231.6	129.7	58.8																						50	
130	39.6	100	30.5	56	17.1					70.0	231.1	132.5	60.1																		56	
130	39.6	100	30.5	60	18.3	63.3	227.2	112.2	50.9	67.6	229.6	125.4	56.9																		60	
130	39.6	100	30.5	70	21.3	56.7	221.4	102.5	46.5	61.2	224.8	103.7	47.1																		70	
130	39.6	100	30.5	75	22.9									65.0	225.8	88.9	40.3														75	
130	39.6	100	30.5	80	24.4	49.6	213.9	89.7	40.7	54.5	218.5	86.9	39.4	62.0	223.4	82.1	37.3														80	
130	39.6	100	30.5	90	27.4	41.5	204.1	77.8	35.3	47.1	210.3	75.3	34.2	55.3	217.4	71.2	32.3														90	
130	39.6	100	30.5	94	28.7									60.0	218.8	63.2	28.7														94	
130	39.6	100	30.5	100	30.5	31.9	190.7	67.6	30.7	38.6	199.6	65.4	29.7	48.0	209.4	61.8	28.0	56.0	215.1	58.1	26.4									100		
130	39.6	100	30.5	110	33.5	18.4	169.4	57.1	25.9	28.2	184.4	57.5	26.1	39.7	199.0	54.3	24.6	48.7	207.3	51.0	23.1									110		
130	39.6	100	30.5	112	34.1																	55.0	210.2	46.6	21.1						112	
130	39.6	100	30.5	115	35.1	0.0	137.9	33.2	15.1																						115	
130	39.6	100	30.5	120	36.6					11.2	156.5	49.1	22.3	29.6	184.6	48.1	21.8	40.6	197.2	45.2	20.5	49.2	204.0	42.3	19.2					120		
130	39.6	100	30.5	122	37.2					0.0	137.1	36.2	16.4																		122	
130	39.6	100	30.5	129	39.3																										129	
130	39.6	100	30.5	130	39.6									14.3	159.7	42.9	19.5	30.7	183.3	40.3	18.3	41.2	194.1	38.6	17.5	50.0	200.1	36.4	16.5	130		
130	39.6	100	30.5	133	40.5					0.0	135.2	40.6	18.4																		133	
130	39.6	100	30.5	140	42.7									16.3	160.3	37.0	16.8	31.5	180.5	34.7	15.7	41.4	189.6	32.3	14.7	41.4	189.6	32.3	14.7	140		
130	39.6	100	30.5	144	43.9									0.0	132.2	35.3	16.0														144	
130	39.6	100	30.5	150	45.7													17.6	158.6	31.2	14.2	31.8	176.1	29.1	13.2	31.8	176.1	29.1	13.2	150		
130	39.6	100	30.5	155	47.2													0.0	128.3	29.6	13.4										155	
130	39.6	100	30.5	160	48.8																										160	
130	39.6	100	30.5	165	50.3																										165	
130	39.6	120	36.6	50	15.2	73.0	252.6	114.3	51.9																						50	
130	39.6	120	36.6	60	18.3	68.0	249.1	104.9	47.6																						60	
130	39.6	120	36.6	63	19.2					70.0	249.9	107.9	49.0																		63	
130	39.6	120	36.6	70	21.3	62.8	244.6	93.0	42.2	66.4	247.1	102.0	46.3																		70	
130	39.6	120	36.6	80	24.4	57.3	238.8	85.5	38.8	61.0	242.1	85.7	38.9																		80	
130	39.6	120	36.6	84	25.6									65.0	243.9	77.1	35.0														84	
130	39.6	120	36.6	90	27.4	51.4	231.6	76.9	34.9	55.4	235.9	74.3	33.7	61.7	240.8	70.0	31.8														90	
130	39.6	120	36.6	100	30.5	45.0	222.7	66.8	30.3	49.4	228.2	64.5	29.3	56.1	224.7	60.7	27.5														100	
130	39.6	120	36.6	104	31.7													60.0	236.1	53.9	24.5										104	
130	39.6	120	36.6	110	33.5	37.8	211.3	58.7	26.6	42.8	218.6	56.6	25.7	50.1	227.2	53.2	24.1	56.7	232.4	49.8	22.6										110	
130	39.6	120	36.6	120	36.6	29.1	196.2	52.1	23.6	35.2	206.2	50.2	22.8	43.6	217.9	47.1	21.4	50.7	225.1	44.0	20.0										120	
130	39.6	120	36.6	124	37.8																	55.0	226.6	40.1	18.2						124	
130	39.6	120	36.6	130	39.6	16.8	172.5	43.9	19.9	25.7	189.2	44.8	20.3	36.1	205.9	42.0	19.1	44.2	215.9	40.2	18.2	51.1	221.7	37.6	17.1	51.1	221.7	37.6	17.1	130		
130	39.6	120	36.6	135	41.1	0.0	137.9	26.0	11.8																						135	
130	39.6	120	36.6	140	42.7					10.2	158.4	39.3	17.8	27.0	189.6	38.7	17.6	36.9	204.2	36.2	16.4	44.7	212.7	33.6	15.2					140		
130	39.6	120	36.6	142	43.3					0.0	137.1	28.5	12.9																		142	
130	39.6	120	36.6	150	45.7									13.0	162.1	34.9	15.8	28.0	188.5	32.6	14.8	37.4	201.2	30.3	13.7	44.9	208.2	28.0	12.7	150		
130	39.6	120	36.6	153	46.6					0.0	135.2	33.0	15.0																		153	
130	39.6	120	36.6	160	48.8									14.9	163.1	29.5	13.4	28.7	185.8	27.3	12.4	37.6	196.8	25.3	11.5	37.6	196.8	25.3	11.5	160		
130	39.6	120	36.6	164	50.0									0.0	132.2	28.2	12.8														164	
130	39.6	120	36.6	170	51.8													16.1	161.5	24.7	11.2	28.9	181.5	22.8	10.3	28.9	181.5	22.8	10.3	170		
130	39.6	120	36.6	175	53.3													0.0	128.3	23.5	10.7										175	
130	39.6	120	36.6	180	54.9																										180	
130	39.6	120	36.6	185	56.4																										185	
130	39.6	140	42.7	56	17.1	73.0	271.7	94.8	43.0																						56	
130	39.6	140	42.7	60	18.3	71.3	270.5	92.0	41.7																						60	
130	39.6	140	42.7	70	21.3	66.9	266.6	85.4	38.7	70.0	268.7	89.2	40.5																		70	
130	39.6	140	42.7	80	24.4	62.4	261.9	77.0	34.9	65.5	264.5	82.8	37.6																		80	
130	39.6	140	42.7	90	27.4	57.7	256.1	71.3	32.4	60.9	259.4	73.3	33.3																		90	
130	39.6	140	42.7	92	28.0									65.0	262.0	66.5	30.2														92	
130	39.6	140	42.7	100	30.5	52.7	249.2	65.8	29.9	56.1	253.3	63.5	28.8	61.4	258.1	59.5	27.0														100	
130	39.6	140	42.7	110	33.5	47.3	240.8	57.7	26.2	51.0	245.9	55.6	25.2	56.7	252.1	52.1	23.6														110	
130	39.6	140	42.7	114	34.7													60.0	253.4	46.1	20.9										114	
130	39.6	140	42.7	120	36.6	41.5	230.6	51.1	23.2	45.5	237.0	49.2	22.3	51.6	244.9	46.0	20.9	57.1	249.8	42.8</												

LS-348H 5 -- 360 Degree Capacities -- Retracted Gage -- Luffing Jib
 80" X 95" Luffing Boom, 68" X 80" Luffing Jib, ABC + A Counterweight

Luffing Boom Length (ft)		Luffing Boom Length (m)		Luffing Jib Length (ft)		Luffing Jib Length (m)		Load Radius (ft)		Load Radius (m)		Luffing Boom Angle																Load Radius (ft)								
												88 Degrees				85 Degrees				80 Degrees				75 Degrees					70 Degrees				65 Degrees			
												Luffing Jib Angle (deg)	Tip Height (ft)	Rated Capacity (kips)	Rated Capacity (mt)	Luffing Jib Angle (deg)	Tip Height (ft)	Rated Capacity (kips)	Rated Capacity (mt)	Luffing Jib Angle (deg)	Tip Height (ft)	Rated Capacity (kips)	Rated Capacity (mt)	Luffing Jib Angle (deg)	Tip Height (ft)	Rated Capacity (kips)	Rated Capacity (mt)		Luffing Jib Angle (deg)	Tip Height (ft)	Rated Capacity (kips)	Rated Capacity (mt)	Luffing Jib Angle (deg)	Tip Height (ft)	Rated Capacity (kips)	Rated Capacity (mt)
160	48.8	220	67.1	90	27.4	70.4	375.1	38.4	17.4	*																			90							
160	48.8	220	67.1	100	30.5	67.6	371.2	35.7	16.2	*	70.0	373.7	37.7	17.1	*														100							
160	48.8	220	67.1	110	33.5	64.8	366.8	32.5	14.7	*	67.1	369.7	34.8	15.8	*														110							
160	48.8	220	67.1	120	36.6	61.8	361.8	29.5	13.4	*	64.3	365.2	31.7	14.4	*														120							
160	48.8	220	67.1	130	39.6	58.8	356.1	26.5	12.0	*	61.3	360.1	28.9	13.1	*														130							
160	48.8	220	67.1	131	39.9											65.0	364.1	32.0	14.5	*									131							
160	48.8	220	67.1	140	42.7	55.7	349.7	23.8	10.8	*	58.3	354.3	26.1	11.8	*	62.5	359.8	29.5	13.4	*									140							
160	48.8	220	67.1	150	45.7	52.5	342.4	21.2	9.6	*	55.2	347.7	23.4	10.6	*	59.5	354.2	26.8	12.2	*									150							
160	48.8	220	67.1	160	48.8	49.2	334.3	18.8	8.5	*	52.0	340.3	20.9	9.5	*	56.4	347.9	24.3	11.0	*									160							
160	48.8	220	67.1	162	49.4											60.0	351.7	21.4	9.7	*									162							
160	48.8	220	67.1	170	51.8	45.6	325.1	16.6	7.5	*	48.6	332.0	18.5	8.4	*	53.2	340.9	21.9	9.9	*	57.5	346.7	19.4	8.8					170							
160	48.8	220	67.1	180	54.9	41.9	314.7	14.5	6.6	*	45.0	322.6	16.3	7.4	*	49.9	333.0	19.5	8.8	*	54.4	339.9	17.2	7.8					180							
160	48.8	220	67.1	190	57.9	37.8	302.7	12.6	5.7	*	41.2	312.0	14.3	6.5	*	46.4	324.0	17.3	7.8	*	51.1	332.3	15.3	6.9					190							
160	48.8	220	67.1	191	58.2																55.0	336.7	12.3	5.6					191							
160	48.8	220	67.1	200	61.0	33.3	288.7	10.7	4.9	*	37.1	299.7	12.4	5.6	*	42.7	313.8	15.2	6.9	*	47.7	323.8	13.5	6.1	52.1	330.2	10.9	4.9	200							
160	48.8	220	67.1	210	64.0	28.2	271.9	9.0	4.1	*	32.5	285.3	10.6	4.8	*	38.7	302.2	13.3	6.0	*	44.0	314.0	12.0	5.4	48.8	321.9	9.5	4.3	210							
160	48.8	220	67.1	219	66.8																								219							
160	48.8	220	67.1	220	67.1	22.1	250.6	7.4	3.4	*	27.3	267.9	8.9	4.0	*	34.3	288.7	11.5	5.2	*	40.1	303.0	10.5	4.8	45.2	312.6	8.2	3.7	220							
160	48.8	220	67.1	230	70.1	13.6	219.6	5.8	2.6	*	20.9	245.6	7.3	3.3	*	29.4	272.6	9.7	4.4	*	35.9	290.2	9.3	4.2	41.4	302.0	7.0	3.2	230							
160	48.8	220	67.1	236	71.9	0.0	167.8	4.7	2.1	*																			236							
160	48.8	220	67.1	240	73.2						11.6	211.3	5.7	2.6	*	23.5	252.5	8.1	3.7	*	31.2	275.1	8.1	3.7	37.3	289.8	6.0	2.7	240							
160	48.8	220	67.1	244	74.4						0.0	167.0	4.9	2.2	*														244							
160	48.8	220	67.1	250	76.2											15.8	224.5	6.6	3.0	*	25.7	256.6	7.1	3.2	32.7	275.5	5.0	2.3	250							
160	48.8	220	67.1	258	78.6										0.0	164.7	5.2	2.4	*										258							
160	48.8	220	67.1	260	79.2															18.9	232.3	6.1	2.8	27.6	258.3	4.1	1.9	34.0	273.8	2.2	1.0	260				
160	48.8	220	67.1	270	82.3															7.3	189.3	5.2	2.4	21.3	236.2	3.3	1.5				270					
160	48.8	220	67.1	272	82.9											0.0	161.2	5.1	2.3	*									272							
160	48.8	220	67.1	280	85.3																								280							
160	48.8	220	67.1	285	86.9																12.2	202.9	2.6	1.2					285							
																					0.0	156.6	2.3	1.0												
160	48.8	240	73.2	86	26.2	73.0	397.3	33.3	15.1	*																			86							
160	48.8	240	73.2	90	27.4	72.1	396.2	32.6	14.8	*																			90							
160	48.8	240	73.2	100	30.5	69.6	392.7	29.7	13.5	*																			100							
160	48.8	240	73.2	107	32.6						70.0	392.5	29.9	13.6	*														107							
160	48.8	240	73.2	110	33.5	67.0	388.7	26.8	12.2	*	69.1	391.3	28.9	13.1	*														110							
160	48.8	240	73.2	120	36.6	64.4	384.2	24.1	10.9	*	66.6	387.2	26.1	11.8	*														120							
160	48.8	240	73.2	130	39.6	61.7	379.1	21.5	9.8	*	63.9	382.6	23.5	10.7	*														130							
160	48.8	240	73.2	140	42.7	58.9	373.4	19.0	8.6	*	61.2	377.4	21.0	9.5	*	65.0	382.2	24.0	10.9	*									140							
160	48.8	240	73.2	150	45.7	56.1	367.0	16.7	7.6	*	58.5	371.6	18.7	8.5	*	62.3	377.1	21.5	9.8	*									150							
160	48.8	240	73.2	160	48.8	53.2	359.9	14.5	6.6	*	55.6	365.1	16.3	7.4	*	59.5	371.5	19.2	8.7	*									160							
160	48.8	240	73.2	170	51.8	50.1	352.0	12.4	5.6	*	52.7	357.9	14.2	6.4	*	56.7	365.3	17.1	7.8	*									170							
160	48.8	240	73.2	172	52.4															60.0	369.0	17.8	8.1						172							
160	48.8	240	73.2	180	54.9	47.0	343.2	10.5	4.8	*	49.6	349.8	12.2	5.5	*	53.8	358.4	15.1	6.9	*	57.7	364.1	16.0	7.3					180							
160	48.8	240	73.2	190	57.9	43.6	333.3	8.7	3.9	*	46.4	340.8	10.3	4.7	*	50.8	350.6	13.0	5.9	*	54.8	357.4	14.1	6.4					190							
160	48.8	240	73.2	200	61.0	40.0	322.1	7.0	3.2	*	43.0	330.7	8.5	3.9	*	47.6	342.0	11.1	5.0	*	51.9	349.9	12.4	5.6					200							
160	48.8	240	73.2	203	61.9																55.0	353.1	9.3	4.2					203							
160	48.8	240	73.2	210	64.0	36.1	309.3	5.5	2.5	*	39.4	319.3	6.9	3.1	*	44.3	332.4	9.3	4.2	*	48.8	341.6	10.8	4.9	52.8	347.7	8.3	3.8	210							
160	48.8	240	73.2	220	67.1	31.9	294.5	4.0	1.8	*	35.5	306.2	5.3	2.4	*	40.8	321.5	7.7	3.5	*	45.5	332.4	9.4	4.3	49.8	339.7	7.0	3.2	220							
160	48.8	240	73.2	230	70.1	27.0	276.8	2.6	1.2	*	31.1	291.0	3.9	1.8	*	37.0	309.1	6.1	2.6	*	42.1	321.9	8.2	3.7	46.6	330.7	5.9	2.7	230							
160	48.8	240	73.2	232	70.7																								232							
160	48.8	240	73.2	240	73.2						26.1	272.7	2.5	1.1	*	32.8	294.7	4.6	2.1	*	38.4	310.1	6.8	3.1	43.2	320.7	4.8	2.2	240							
160	48.8	240	73.2	250	76.2											28.1	277.7	3.2	1.5	*	34.3	296.5	5.3	2.4	39.6	309.3	3.8	1.7	250							
160	48.8	240	73.2	260	79.2															29.8	280.6	3.9	1.8	35.6	296.3	2.9	1.3				260					
160	48.8	240	73.2	270	82.3															24.6	261.1	2.6	1.2	31.3	281.2	2.1	1.0				270					
170	51.8	100	30.5	46	14.0	73.0	273.4	126.6	57.4	*																			46							
170	51.8	100	30.5	50	15.2	70.4	272.0	120.3	54.6	*																			50							
170	51.8	100	30.5	60	18.3	64.2	267.9	107.0	48.5	*	70.0	270.9	118.0	53.5	*														60							
170	51.8	100	30.5	70	21.3	57.7	262.3	97.1	44.1																											

LS-348H 5 -- 360 Degree Capacities -- Retracted Gage -- Luffing Jib
80" X 95" Luffing Boom, 68" X 80" Luffing Jib, ABC + A Counterweight

Luffing Boom Length (ft)	Luffing Boom Length (m)	Luffing Jib Length (ft)	Luffing Jib Length (m)	Load Radius (ft)	Load Radius (m)	Luffing Boom Angle																Load Radius (ft)														
						88 Degrees				85 Degrees				80 Degrees				75 Degrees					70 Degrees				65 Degrees									
						Luffing Jib Angle (deg)	Tip Height (ft)	Rated Capacity (kips)	Rated Capacity (mt)	Luffing Jib Angle (deg)	Tip Height (ft)	Rated Capacity (kips)	Rated Capacity (mt)	Luffing Jib Angle (deg)	Tip Height (ft)	Rated Capacity (kips)	Rated Capacity (mt)	Luffing Jib Angle (deg)	Tip Height (ft)	Rated Capacity (kips)	Rated Capacity (mt)		Luffing Jib Angle (deg)	Tip Height (ft)	Rated Capacity (kips)	Rated Capacity (mt)	Luffing Jib Angle (deg)	Tip Height (ft)	Rated Capacity (kips)	Rated Capacity (mt)						
170	51.8	200	61.0	225	68.6					0.0	177.0	11.1	5.0					18.2	237.0	12.1	5.5	28.6	266.5	9.7	4.4	36.1	283.7	7.4	3.4	42.2	294.1	5.1	2.3	225		
170	51.8	200	61.0	230	70.1													0.9	177.6	10.9	4.9	21.9	245.3	8.6	3.9	30.9	268.6	6.3	2.9	37.8	282.2	4.1	1.9	230		
170	51.8	200	61.0	240	73.2																	12.0	212.5	7.6	3.4	24.8	249.6	5.4	2.5	32.8	268.1	3.3	1.5	240		
170	51.8	200	61.0	250	76.2																													250		
170	51.8	200	61.0	254	77.4																													254		
170	51.8	200	61.0	260	79.2																													260		
170	51.8	200	61.0	268	81.7																													268		
170	51.8	220	67.1	81	24.7	73.0	388.2	40.3	18.3	*																								81		
170	51.8	220	67.1	90	27.4	70.5	385.2	37.6	17.1	*																								90		
170	51.8	220	67.1	100	30.5	67.7	381.4	35.3	16.0	*																								100		
170	51.8	220	67.1	101	30.8						70.0	383.7	36.9	16.7	*																			101		
170	51.8	220	67.1	110	33.5	64.9	377.0	32.2	14.6	*	67.4	380.0	34.6	15.7	*																			110		
170	51.8	220	67.1	120	36.6	61.9	372.0	29.2	13.2	*	64.5	375.6	31.5	14.3	*																			120		
170	51.8	220	67.1	130	39.6	58.9	366.3	26.3	11.9	*	61.6	370.5	28.7	13.0	*																			130		
170	51.8	220	67.1	133	40.5											65.0	373.9	31.5	14.3	*														133		
170	51.8	220	67.1	140	42.7	55.9	359.9	23.6	10.7	*	58.6	364.8	26.0	11.8	*	63.0	370.5	27.9	12.7	*														140		
170	51.8	220	67.1	150	45.7	52.6	352.7	21.0	9.5	*	55.5	358.3	23.3	10.6	*	60.0	365.1	26.9	12.2	*														150		
170	51.8	220	67.1	160	48.8	49.3	344.6	18.7	8.5	*	52.3	351.0	20.8	9.4	*	57.0	358.9	24.4	11.1	*														160		
170	51.8	220	67.1	164	50.0											60.0	361.3	19.9	9.0	*														164		
170	51.8	220	67.1	170	51.8	45.8	335.4	16.5	7.5	*	48.9	342.8	18.5	8.4	*	53.8	352.0	22.0	10.0	*	58.3	358.0	18.6	8.4									170			
170	51.8	220	67.1	180	54.9	42.0	325.0	14.4	6.5	*	45.3	333.5	16.3	7.4	*	50.5	344.2	19.6	8.9	*	55.2	351.4	16.4	7.4									180			
170	51.8	220	67.1	190	57.9	38.0	313.1	12.5	5.7	*	41.6	322.9	14.3	6.5	*	47.0	335.5	17.5	7.9	*	51.9	344.1	14.5	6.6										190		
170	51.8	220	67.1	195	59.4																														195	
170	51.8	220	67.1	200	61.0	33.5	299.2	10.7	4.9	*	37.5	310.8	12.4	5.6	*	43.4	325.5	15.4	7.0	*	48.6	335.7	12.8	5.8	53.3	342.2	10.0	4.5					200			
170	51.8	220	67.1	210	64.0	28.4	282.5	9.0	4.1	*	32.9	296.6	10.6	4.8	*	39.4	314.2	13.4	6.1	*	45.0	326.3	11.3	5.1	49.9	334.2	8.6	3.9					210			
170	51.8	220	67.1	220	67.1	22.3	261.5	7.3	3.3	*	27.8	279.6	8.9	4.0	*	35.1	301.0	11.6	5.3	*	41.2	315.6	9.9	4.5	46.4	325.3	7.4	3.4					220			
170	51.8	220	67.1	223	68.0																														223	
170	51.8	220	67.1	230	70.1	14.0	231.0	5.8	2.6	*	21.6	257.8	7.3	3.3	*	30.3	285.5	9.9	4.5	*	37.0	303.3	8.6	3.9	42.7	315.1	6.2	2.8	50.0	328.3	4.6	2.1	230			
170	51.8	220	67.1	236	71.9	0.0	177.8	4.6	2.1	*																									236	
170	51.8	220	67.1	240	73.2						12.7	225.3	5.8	2.6	*	24.6	266.2	8.3	3.8	*	32.5	288.9	7.5	3.4	38.7	303.5	5.2	2.4	44.1	312.7	3.0	1.4	240			
170	51.8	220	67.1	245	74.7						0.0	177.0	4.8	2.2	*																				245	
170	51.8	220	67.1	250	76.2											17.4	240.2	6.7	3.0	*	27.2	271.5	6.5	2.9	34.4	290.0	4.2	1.9	40.2	301.6	2.1	1.0	250			
170	51.8	220	67.1	260	79.2											0.8	177.7	5.1	2.3	*	20.8	249.1	5.5	2.5	29.4	274.0	3.4	1.5					260			
170	51.8	220	67.1	270	82.3																														270	
170	51.8	220	67.1	274	83.5																														274	
170	51.8	240	73.2	87	26.5	73.0	407.3	31.8	14.4	*																									87	
170	51.8	240	73.2	90	27.4	72.2	406.3	31.4	14.2	*																									90	
170	51.8	240	73.2	100	30.5	69.6	402.8	29.3	13.3	*																									100	
170	51.8	240	73.2	108	32.9						70.0	402.5	29.4	13.3	*																				108	
170	51.8	240	73.2	110	33.5	67.1	398.9	26.5	12.0	*	69.4	401.6	28.7	13.0	*																				110	
170	51.8	240	73.2	120	36.6	64.5	394.4	23.9	10.8	*	66.8	397.5	25.9	11.8	*																				120	
170	51.8	240	73.2	130	39.6	61.8	389.3	21.3	9.7	*	64.2	393.0	23.3	10.6	*																				130	
170	51.8	240	73.2	140	42.7	59.0	383.6	18.8	8.5	*	61.5	387.8	20.9	9.5	*																				140	
170	51.8	240	73.2	142	43.3											65.0	392.0	23.7	10.8	*															142	
170	51.8	240	73.2	150	45.7	56.2	377.3	16.5	7.5	*	58.7	382.1	18.6	8.4	*	62.7	387.8	21.6	9.8	*															150	
170	51.8	240	73.2	160	48.8	53.3	370.2	14.3	6.5	*	55.9	375.7	16.3	7.4	*	60.0	382.4	19.3	8.8	*															160	
170	51.8	240	73.2	170	51.8	50.2	362.3	12.3	5.6	*	52.9	368.5	14.2	6.4	*	57.2	376.3	17.2	7.8	*															170	
170	51.8	240	73.2	174	53.0																															174
170	51.8	240	73.2	180	54.9	47.1	353.5	10.4	4.7	*	49.9	360.5	12.2	5.5	*	54.3	369.5	15.2	6.9	*	58.4	375.3	15.3	6.9										180		
170	51.8	240	73.2	190	57.9	43.7	343.7	8.6	3.9	*	46.7	351.6	10.3	4.7	*	51.3	361.9	13.2	6.0	*	55.6	368.8	13.4	6.1										190		
170	51.8	240	73.2	200	61.0	40.1	332.5	7.0	3.2	*	43.3	341.6	8.6	3.9	*	48.2	353.4	11.3	5.1	*	52.6	361.6	11.7	5.3										200		
170	51.8	240	73.2	206	62.8																															206
170	51.8	240	73.2	210	64.0	36.3	319.8	5.4	2.5	*	39.7	330.3	6.9	3.1	*	44.9	344.0	9.5	4.3	*	49.6	353.5	10.1	4.6	53.8	359.6	7.4	3.4					210			
170	51.8	240	73.																																	

LS-348H 5 -- 360 Degree Capacities -- Retracted Gage -- Luffing Jib
80" X 95" Luffing Boom, 68" X 80" Luffing Jib, ABC + A Counterweight

Luffing Boom Length (ft)	Luffing Boom Length (m)	Luffing Jib Length (ft)	Luffing Jib Length (m)	Load Radius (ft)	Load Radius (m)	Luffing Boom Angle																				Load Radius (ft)				
						88 Degrees				85 Degrees				80 Degrees				75 Degrees				70 Degrees					65 Degrees			
						Luffing Jib Angle (deg)	Tip Height (ft)	Rated Capacity (kips)	Rated Capacity (mt)	Luffing Jib Angle (deg)	Tip Height (ft)	Rated Capacity (kips)	Rated Capacity (mt)	Luffing Jib Angle (deg)	Tip Height (ft)	Rated Capacity (kips)	Rated Capacity (mt)	Luffing Jib Angle (deg)	Tip Height (ft)	Rated Capacity (kips)	Rated Capacity (mt)	Luffing Jib Angle (deg)	Tip Height (ft)	Rated Capacity (kips)	Rated Capacity (mt)		Luffing Jib Angle (deg)	Tip Height (ft)	Rated Capacity (kips)	Rated Capacity (mt)
180	54.9	240	73.2	230	70.1	27.4	298.1	2.5	1.1	31.9	313.8	3.9	1.8	38.3	333.3	6.4	2.9	43.9	346.8	6.9	3.1	48.8	355.8	4.2	1.9	230				
180	54.9	240	73.2	240	73.2					27.1	296.1	2.6	1.2	34.3	319.7	4.9	2.2	40.3	335.7	5.8	2.6	45.5	346.5	3.2	1.5	240				
180	54.9	240	73.2	250	76.2									29.8	303.7	3.5	1.6	36.5	323.1	4.8	2.2	42.1	336.0	2.3	1.0	250				
180	54.9	240	73.2	260	79.2									24.6	284.2	2.2	1.0	32.2	308.5	3.8	1.7					260				
180	54.9	240	73.2	270	82.3													27.4	291.0	3.0	1.4					270				
190	57.9	100	30.5	46	14.0	73.0	293.4	112.7	51.1																	46				
190	57.9	100	30.5	50	15.2	70.9	292.3	109.0	49.5																	50				
190	57.9	100	30.5	60	18.3	64.7	288.2	98.3	44.6																	60				
190	57.9	100	30.5	61	18.6					70.0	290.9	104.9	47.6													61				
190	57.9	100	30.5	70	21.3	58.1	282.7	89.4	40.6	64.6	287.2	96.9	44.0													70				
190	57.9	100	30.5	80	24.4	51.1	275.6	82.2	37.3	58.1	281.8	83.7	38.0													80				
190	57.9	100	30.5	86	26.2									65.0	284.9	70.3	31.9									86				
190	57.9	100	30.5	90	27.4	43.3	266.4	76.1	34.5	51.0	274.7	72.8	33.0	62.3	282.7	65.9	29.9									90				
190	57.9	100	30.5	100	30.5	34.1	253.9	66.8	30.3	43.2	265.4	63.1	28.6	55.6	276.7	57.0	25.9									100				
190	57.9	100	30.5	110	33.5	21.9	235.1	58.6	26.6	34.0	252.9	55.3	25.1	48.3	268.9	49.8	22.6	60.0	276.7	44.7	20.3					110				
190	57.9	100	30.5	117	35.7	0.0	197.8	36.2	16.4																		117			
190	57.9	100	30.5	120	36.6					21.8	234.0	49.0	22.2	40.1	258.6	44.0	20.0	52.8	269.8	40.0	18.1					120				
190	57.9	100	30.5	127	38.7					0.0	196.9	39.4	17.9													127				
190	57.9	100	30.5	130	39.6									30.1	244.4	40.1	18.2	45.2	261.1	36.0	16.3					130				
190	57.9	100	30.5	133	40.5																	55.0	266.6	30.7	13.9	133				
190	57.9	100	30.5	140	42.7									15.2	220.4	36.2	16.4	36.5	249.6	32.2	14.6	49.6	260.9	28.2	12.8	140				
190	57.9	100	30.5	144	43.9									0.0	194.2	34.7	15.7									144				
190	57.9	100	30.5	150	45.7													25.3	232.8	28.9	13.1	41.6	251.1	25.2	11.4	150				
190	57.9	100	30.5	155	47.2																	50.0	254.5	20.5	9.3	155				
190	57.9	100	30.5	160	48.8													0.0	190.2	26.0	11.8	32.0	237.7	22.6	10.3	160				
190	57.9	100	30.5	170	51.8																	18.6	216.6	20.3	9.2	170				
190	57.9	100	30.5	175	53.3																	0.0	184.7	19.1	8.7	175				
190	57.9	100	30.5	180	54.9																	26.3	222.1	15.4	7.0	180				
190	57.9	100	30.5	190	57.9																	4.7	186.1	13.7	6.2	190				
190	57.9	120	36.6	52	15.8	73.0	312.6	98.0	44.5																	52				
190	57.9	120	36.6	60	18.3	69.1	309.9	91.0	41.3																	60				
190	57.9	120	36.6	68	20.7					70.0	309.7	91.1	41.3													68				
190	57.9	120	36.6	70	21.3	63.9	305.6	82.2	37.3	69.1	309.0	89.7	40.7													70				
190	57.9	120	36.6	80	24.4	58.5	300.1	75.2	34.1	63.9	304.6	82.2	37.3													80				
190	57.9	120	36.6	90	27.4	52.7	293.2	69.6	31.6	58.4	299.1	71.7	32.5													90				
190	57.9	120	36.6	94	28.7									65.0	303.0	60.6	27.5									94				
190	57.9	120	36.6	100	30.5	46.4	284.7	64.8	29.4	52.6	292.2	62.0	28.1	61.9	300.1	55.7	25.3									100				
190	57.9	120	36.6	110	33.5	39.4	273.9	57.7	26.2	46.3	283.7	54.3	24.6	56.3	294.1	48.6	22.1									110				
190	57.9	120	36.6	120	36.6	31.1	259.7	51.1	23.2	39.3	272.9	48.0	21.8	50.4	286.7	42.8	19.4	60.0	294.1	39.5	17.9					120				
190	57.9	120	36.6	130	39.6	20.0	238.8	45.6	20.7	31.0	258.7	42.8	19.4	43.9	277.4	39.5	17.9	54.1	287.3	34.9	15.8					130				
190	57.9	120	36.6	137	41.8	0.0	197.8	28.6	13.0																		137			
190	57.9	120	36.6	140	42.7					19.8	237.6	39.5	17.9	36.5	265.5	35.3	16.0	47.9	279.2	31.1	14.1					140				
190	57.9	120	36.6	144	43.9																	55.0	283.0	25.7	11.7	144				
190	57.9	120	36.6	147	44.8					0.0	196.9	31.4	14.2													147				
190	57.9	120	36.6	150	45.7									27.4	249.5	31.8	14.4	41.1	269.0	27.9	12.7	51.5	278.5	24.0	10.9	150				
190	57.9	120	36.6	160	48.8					13.9	223.0	28.6	13.0	33.2	255.8	25.1	11.4	33.2	255.8	25.1	11.4	45.1	269.6	21.5	9.8	160				
190	57.9	120	36.6	164	50.0					0.0	194.2	27.5	12.5													164				
190	57.9	120	36.6	168	51.2																					168				
190	57.9	120	36.6	170	51.8													23.0	237.1	22.6	10.3	37.8	258.3	19.3	8.8	170				
190	57.9	120	36.6	180	54.9					0.0	190.2	20.4	9.3					0.0	190.2	20.4	9.3	29.2	243.2	17.3	7.8	180				
190	57.9	120	36.6	190	57.9													17.0	219.7	15.5	7.0	33.9	244.7	12.7	5.8	190				
190	57.9	120	36.6	195	59.4													0.0	184.7	14.6	6.6					195				
190	57.9	120	36.6	200	61.0																	24.0	226.6	11.2	5.1	200				
190	57.9	120	36.6	210	64.0																	4.3	186.9	9.9	4.5	210				
190	57.9	140	42.7	58	17.7	73.0	331.7	82.5	37.4																	58				
190	57.9	140	42.7	60	18.3	72.2	331.1	81.4	36.9																	60				
190	57.9	140	42.7	70	21.3	67.9	327.5	75.4	34.2																	70				
190	57.9	140	42.7	75	22.9					70.0	328.4	77.0	34.9													75				
190	57.9	140	42.7	80	24.4	63.4	322.9	69.1	31.4	67.8	326.5	74.5	33.8													80				
190	57.9	140	42.7	90	27.4	58.7	317.4	63.8	28.9	63.3	322.0	69.3	31.4													90				
190	57.9	140	42.7	100	30.5	53.8	310.7	59.2	26.9	58.6	316.4	60.9	27.6													100				
190	57.9	140	42.7	103	31.4									65.0	321.1	52.4	23.8									103				
190	57.9	140	42.7	110	33.5	48.5	302.6	54.1	24.5	53.7	309.7	53.2	24.1	61.6	317.4	47.4	21.5									110				
190	57.9	140	42.7	120	36.6	42.8	292.9	48.8	22.1	48.4	301.7	46.9	21.3	56.9	311.5	41.6	18.9									120				
190	57.9	140	42.7	130	39.6	36.3	280.7	44.0	20.0	42.7	291.8	4																		

Link-Belt Construction Equipment Company Lexington, Kentucky www.linkbelt.com

®Link-Belt is a registered trademark. Copyright 2007. We are constantly improving our products and therefore reserve the right to change designs and specifications.