

LONG FRONT 240X₂

specifications

Operating Weight: 61,729 lbs. (28 000 kg)

SAE Net Horsepower: 177 HP (132 kW)

Bucket Range: .50 - .86 yd³ (.38 - .66 m³)

Engine

Isuzu AH-4HK1X Tier 3 turbocharged diesel engine with electronic fuel control, 4-cylinder, water-cooled, EGR with cooler, air-to-air intercooler, fuel cooler, auto idle start, neutral safety start, glow plugs, auto warm-up, EPF engine protection, dual stage fuel filtration, remote oil filter, green plug oil drain.

SAE net horsepower 177 HP (132 kW) @ 2,000 rpm
Displacement 5.2 L
Maximum torque 469 lbf-ft (636 N-m) @ 1,500 rpm
Starter 24V-5.0kW
Alternator 50 amp
Battery 92 amp hours

Cab and Controls

Pressurized cab with climate control a/c and heat with defroster, LCD monitor, illuminated soft-touch switches, low-effort controls pre-wired for auxiliary hydraulics, control pattern changer, single pedal travel, sliding LEXAN® MARGARD® windows, safety glass front window with automatic locking system and vandal cover, intermittent windshield wiper with washer, emergency rear window exit, polycarbonate roof hatch with sunshade, shockless cab suspension with four fluid mountings, KAB® reclining suspension seat, sliding 4-position tilting control consoles, AM/FM radio, digital clock, dome light, seat belt, coat hook, cup holder, storage compartments, floor mat, footrests, ashtray, 24-volt cigarette lighter, 12-volt outlet, travel alarm, handrail, mirrors.

Four selectable working modes, anti-theft password protection system, on-board self-diagnostic system with memory, auto-idling system, one-touch decelerator, auto power boost, gate lock safety shutoff.

A/C output 18,100 BTU/hr
Heater output 20,150 BTU/hr
Sound level (inside cab) 70.5 dB(A)
Sound level (exterior) 99.7 dB(A)

Hydraulic System

Open-center system, two variable displacement axial piston pumps and one gear pump for pilot controls, main control valve with one 4-spool valve and one 5-spool valve with auxiliary spool - stackable, oil cooler, auto power boost, boom and arm holding valves, o-ring face seals, 6 micron return filter, firewall.

Hydraulic Pumps

Maximum flow 2 x 61.8 gpm (2 x 234 l/min)
Pilot pump maximum flow 5.3 gpm (20 l/min)

Relief Valve Settings

Boom/arm out 4,970 psi (343 bar)
in Power-Boost Mode 5,340 psi (368 bar)
Arm in 3,060 psi (211 bar)
Bucket 4,260 psi (294 bar)
Swing circuit 3,920 psi (270 bar)
Travel 4,970 psi (343 bar)

Hydraulic Cylinders

number of cylinders – bore x rod x stroke
Boom 2 – 5.1" x 3.5" x 52.6"
(130 mm x 90 mm x 1,335 mm)
Arm 1 – 5.9" x 4.1" x 68.4"
(150 mm x 105 mm x 1,737 mm)
Bucket 1 – 3.7" x 2.6" x 34.7"
(95 mm x 65 mm x 881 mm)

Hydraulic Oil Filtration

Return filter 6 micron
Pilot filter 8 micron
Suction screen 105 micron



Swing

Planetary reduction powered by axial piston motor. Internal ring gear with grease cavity for swing pinion. Swing bearing is single-row shear type ball bearing. Mechanical disc swing brake. Auto power swing.

Swing speed 0 – 10.7 rpm
Swing radius front 20' 5" (6.22 m)
Swing radius rear 9' 8" (2.95 m)
Swing torque 51,480 lbf-ft. (69.8 kN•m)

Undercarriage

X Pattern carbody with 15' 3" (4.65 m) LC long undercarriage by 8' 6" (2.6 m) track gauge, sealed and strutted track chain with track guide, sealed rollers and idlers, two-speed independent hydrostatic travel with compact planetary final drive, disc type brakes, adjustable track tension, swivel guard.

Carrier rollers 2 per side
Track rollers 9 per side
Track link pitch 7.48" (190 mm)
Shoes 51 per side
Shoe width 31.5" (800 mm)
Ground pressure 6.1 psi (.42 bar)

Lubricant and Coolant Capacity

Fuel tank 108.31 gal. (410 liters)
Hydraulic tank 38.8 gal. (147 liters)
Hydraulic system 66.04 gal. (250 liters)
Final drive (per side) 1.3 gal. (5.0 liters)
Swing drive 2.56 gal. (9.7 liters)
Engine oil 6.1 gal. (23.1 liters)
Cooling system 6.65 gal. (25.2 liters)

Travel System

Two-speed independent hydrostatic travel with compact axial piston motors. Hydraulic motor powered output shaft coupled to a planetary reduction unit and track sprocket. All hydraulic components mounted within the width of side frame. Automatic downshift. Single pedal travel. Spring applied, hydraulically released disc parking brake built into each motor. Each travel motor equipped with counterbalance valve to prevent overspeeding down an incline.

Max. travel speed 2.2 - 3.4 mph (3.5 - 5.5 km/h)
Drawbar pull 45,250 lbf (201 kN)
Gradeability 70% (35°)

Attachment

Boom 33' 10" (10.3 m)
Available Arms **Digging Force***
• 26' 3" (8.00 m) 9,060 lbf (40.3 kN)

Bucket Digging Force 17,310 lbf (77 kN)

*Digging force ratings are based on ISO 6015, "Earthmoving Machinery – Hydraulic Excavators – Tool Forces."

Fuel Usage*

Heavy 5.01 gal / hr (18.97 liter / hr)
Average 4.34 gal / hr (16.44 liter / hr)
Light 3.67 gal / hr (13.91 liter / hr)

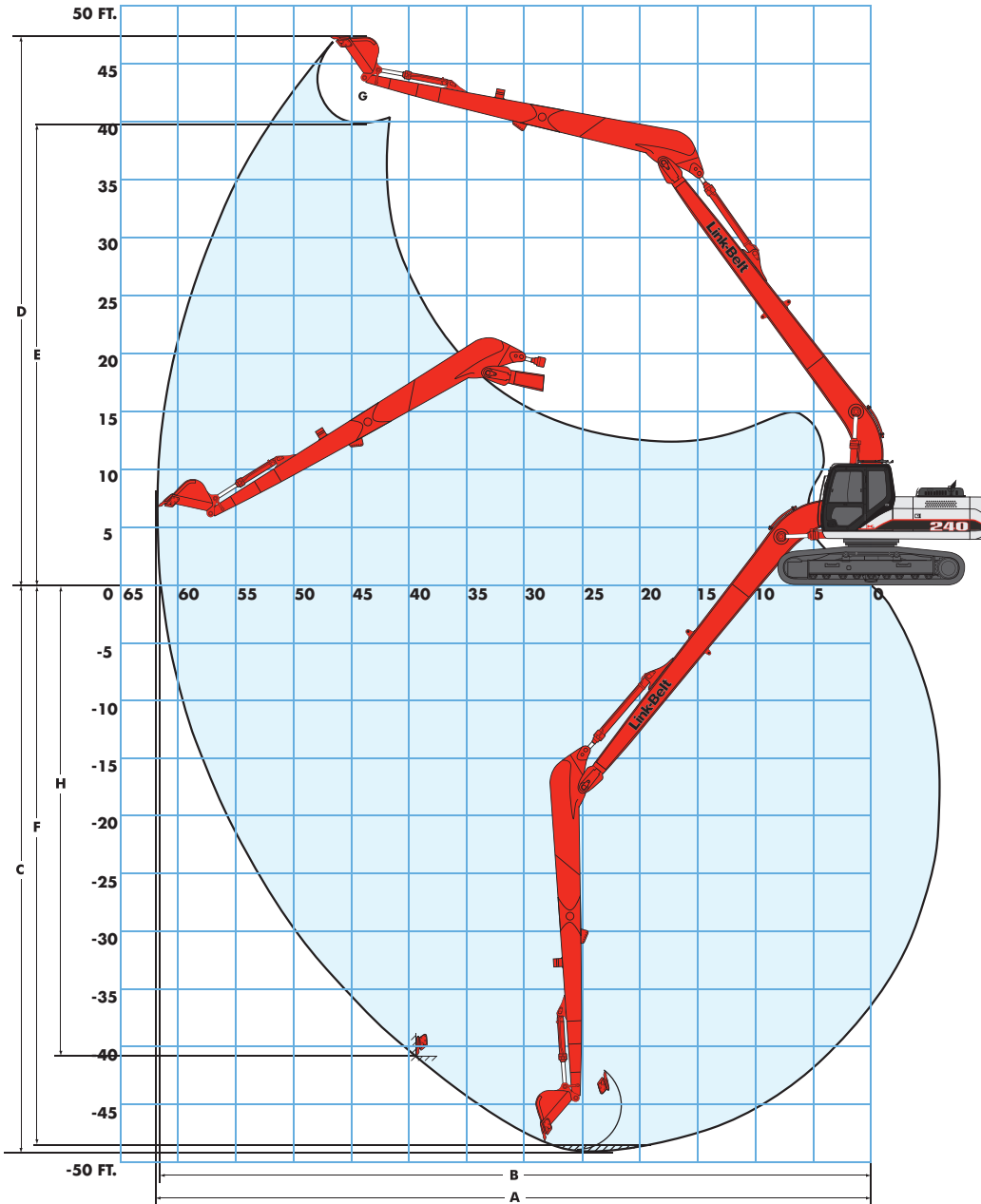
*Fuel economy varies widely depending on application. "Heavy" represents nearly continuous operation in tough digging applications in SP Mode. "Light" represents easy digging applications utilizing the machine about 50% of the time in SP Mode.

Operating Weight

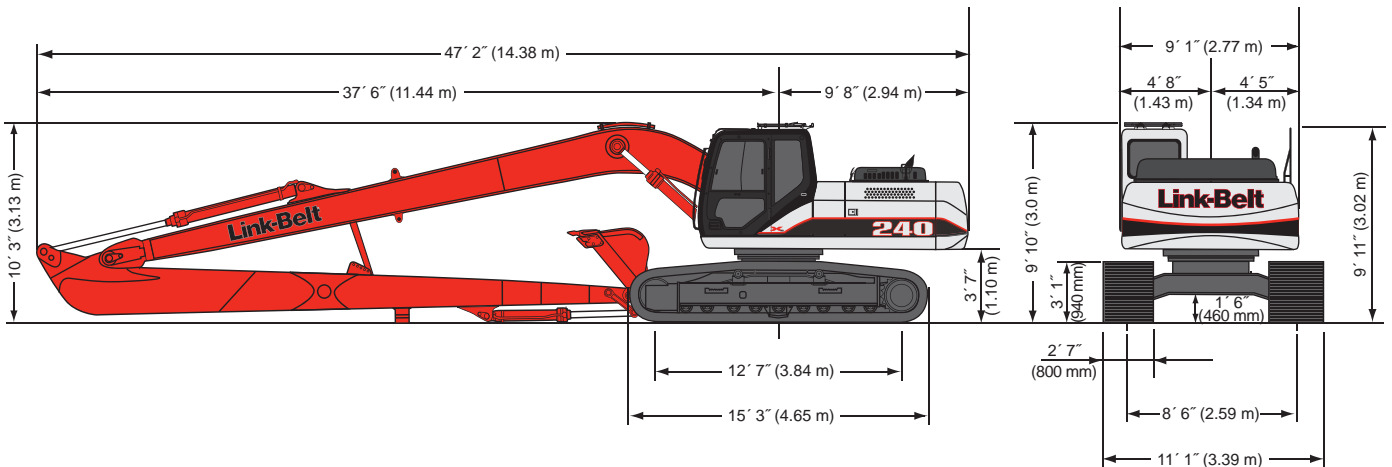
Working weight with 31.5" (800 mm) shoes, 33' 9" (10.3 m) boom, 26' 3" (8.00 m) arm 745 lb. (338 kg) bucket
..... 61,729 lbs (28,000 kg)

240 X2 LF Specifications

Working Ranges



Machine equipped with 33' 10" (10.3 m) boom	26' 3" Arm (8.00 m)
A. Maximum reach	60' 1" (18.32 m)
B. Maximum reach @ ground level	59' 9" (18.22 m)
C. Maximum dig depth	47' 9" (14.56 m)
D. Maximum dig height	45' 9" (13.95 m)
E. Maximum dump height	38' 8" (11.78 m)
F. Digging depth - 8' (2.44 m) level bottom	47' 3" (14.41 m)
G. Bucket rotation	178°
H. Maximum vertical wall depth	39' 10" (12.13 m)



240 X2 LF Specifications

Lifting Capacities

26' 3" (8.00 m) Arm with 33' 9" (10.3 m) Boom and 745 lb. (338 kg) Bucket with Power-Boost Applied

		Radius of Load													
		10' 0" (3.05 m)		15' 0" (4.57 m)		20' 0" (6.10 m)		25' 0" (7.62 m)		30' 0" (9.14 m)		35' 0" (10.7 m)			
		End	Side	End	Side	End	Side	End	Side	End	Side	End	Side		
+40' 0"	lbs / (kg)														
+35' 0"	lbs / (kg)														
+30' 0"	lbs / (kg)														
+25' 0"	lbs / (kg)														
+20' 0"	lbs / (kg)														
+15' 0"	lbs / (kg)														
+10' 0"	lbs / (kg)											6,100* / (2767)	6,100* / (2767)	5,400* / (2449)	5,400* / (2449)
+5' 0"	lbs / (kg)	6,250* / (2835)	6,250* / (2835)	15,700* / (7122)	15,700* / (7122)	11,400* / (5171)	11,400* / (5171)	8,700* / (3946)	8,700* / (3946)	7,100* / (3221)	7,100* / (3221)	6,100* / (2767)	6,100* / (2767)	6,100* / (2767)	6,100* / (2767)
Ground	lbs / (kg)	3,950* / (1792)	3,950* / (1792)	9,700* / (4400)	9,700* / (4400)	13,400* / (6078)	12,800 / (5806)	10,200* / (4627)	9,450 / (4287)	8,150* / (3697)	7,250 / (3289)	6,850* / (3107)	5,700 / (2586)		
-5' 0"	lbs / (kg)	4,300* / (1950)	4,300* / (1950)	7,650* / (3470)	7,650* / (3470)	14,500* / (6577)	11,450 / (5194)	11,450* / (5194)	8,500 / (3856)	9,050 / (4105)	6,600 / (2994)	7,500* / (3402)	5,250 / (2381)		
-10' 0"	lbs / (kg)	5,150* / (2336)	5,150* / (2336)	7,600* / (3447)	7,600* / (3447)	13,050* / (5919)	10,600 / (4808)	12,250* / (5557)	7,850 / (3561)	9,750* / (4423)	6,100 / (2767)	7,950 / (3606)	4,850 / (2200)		
-15' 0"	lbs / (kg)	6,000* / (2722)	6,000* / (2722)	8,250* / (3742)	8,250* / (3742)	12,700* / (5761)	10,200 / (4627)	12,500 / (5670)	7,450 / (3379)	9,600 / (4355)	5,750 / (2608)	7,700 / (3493)	4,550 / (2064)		
-20' 0"	lbs / (kg)	6,950* / (3153)	6,950* / (3153)	9,300* / (4218)	9,300* / (4218)	13,400* / (6078)	10,150 / (4604)	12,300 / (5579)	7,300 / (3311)	9,400 / (4264)	5,550 / (2517)	7,500 / (3402)	4,400 / (1996)		
-25' 0"	lbs / (kg)	8,200* / (3720)	8,200* / (3720)	10,400* / (4717)	10,400* / (4717)	14,800* / (6713)	10,250 / (4649)	12,300 / (5579)	7,300 / (3311)	9,400 / (4264)	5,550 / (2517)	7,450 / (3379)	4,350 / (1973)		
-30' 0"	lbs / (kg)	9,750* / (4423)	9,750* / (4423)	12,200* / (5534)	12,200* / (5534)	15,950* / (7235)	10,500 / (4763)	12,450 / (5647)	7,450 / (3379)	9,450 / (4287)	5,600 / (2540)	7,550 / (3425)	4,450 / (2019)		
-35' 0"	lbs / (kg)	11,600* / (5262)	11,600* / (5262)	14,550* / (6600)	14,550* / (6600)	14,950* / (6781)	10,900 / (4944)	11,900* / (5398)	7,700 / (3493)	9,650* / (4377)	5,850 / (2654)	7,700 / (3493)	4,600 / (2087)		
-40' 0"	lbs / (kg)	13,700* / (6214)	13,700* / (6214)	17,050* / (7734)	17,050* / (7734)	13,300* / (6033)	11,500 / (5216)	10,650* / (4831)	8,150 / (3697)	8,650* / (3924)	6,200 / (2812)	7,050* / (3198)	4,950 / (2245)		
-45' 0"	lbs / (kg)			13,700* / (6214)	13,700* / (6214)	10,700* / (4854)	10,700* / (4854)	8,500* / (3859)	8,500* / (3859)						

26' 3" (8.00 m) Arm with 33' 9" (10.3 m) Boom and 745 lb. (338 kg) Bucket with Power-Boost Applied

		Radius of Load									
		40' 0" (12.2 m)		45' 0" (13.7 m)		50' 0" (15.2 m)		55' 0" (16.8 m)		Cap. at Max. Reach	
		End	Side	End	Side	End	Side	End	Side	End	Side
+40' 0"	lbs / (kg)									3,050* / (1383)	3,050* / (1383)
+35' 0"	lbs / (kg)									3,000* / (1361)	3,000* / (1361)
+30' 0"	lbs / (kg)					3,650* / (1656)	3,650* / (1656)			3,000* / (1361)	3,000* / (1361)
+25' 0"	lbs / (kg)			3,700* / (1678)	3,700* / (1678)	3,700* / (1678)	3,700* / (1678)			3,000* / (1361)	2,650 / (1202)
+20' 0"	lbs / (kg)			3,950* / (1792)	3,950* / (1792)	3,850* / (1746)	3,700 / (1678)	3,800* / (1724)	2,850 / (1293)	3,050* / (1383)	2,400 / (1089)
+15' 0"	lbs / (kg)	4,450* / (2019)	4,450* / (2019)	4,250* / (1928)	4,250* / (1928)	4,050* / (1837)	3,550 / (1610)	4,000* / (1814)	2,750 / (1247)	3,150* / (1429)	2,200 / (998)
+10' 0"	lbs / (kg)	4,950* / (2245)	4,950* / (2245)	4,600* / (2087)	4,200 / (1905)	4,300* / (1950)	3,350 / (1520)	4,150* / (1882)	2,600 / (1179)	3,300* / (1497)	2,050 / (930)
+5' 0"	lbs / (kg)	5,450* / (2472)	4,950 / (2245)	4,950* / (2245)	3,950 / (1792)	4,600* / (2087)	3,100 / (1406)	4,200 / (1905)	2,450 / (1111)	3,500* / (1588)	1,950 / (885)
Ground	lbs / (kg)	5,950* / (2699)	4,550 / (2064)	5,300* / (2404)	3,650 / (1656)	4,850* / (2200)	2,900 / (1315)	4,100 / (1860)	2,300 / (1043)	3,550 / (1610)	1,900 / (862)
-5' 0"	lbs / (kg)	6,450* / (2926)	4,200 / (1905)	5,650 / (2563)	3,400 / (1542)	4,700 / (2132)	2,750 / (1247)	3,950 / (1792)	2,200 / (998)	3,600 / (1633)	1,900 / (862)
-10' 0"	lbs / (kg)	6,500 / (2948)	3,900 / (1769)	5,400 / (2449)	3,150 / (1429)	4,550 / (2064)	2,600 / (1179)	3,850 / (1746)	2,100 / (953)	3,700 / (1678)	2,000 / (907)
-15' 0"	lbs / (kg)	6,300 / (2858)	3,700 / (1678)	5,250 / (2381)	3,000 / (1361)	4,450 / (2019)	2,500 / (1134)	3,800 / (1724)	2,050 / (930)	3,900 / (1769)	2,100 / (953)
-20' 0"	lbs / (kg)	6,150 / (2790)	3,600 / (1633)	5,150 / (2336)	2,950 / (1338)	4,400 / (1996)	2,450 / (1111)			4,200 / (1905)	2,350 / (1066)
-25' 0"	lbs / (kg)	6,150 / (2790)	3,550 / (1610)	5,150 / (2336)	2,900 / (1315)	4,400 / (1996)	2,450 / (1111)			4,700 / (2132)	2,650 / (1202)
-30' 0"	lbs / (kg)	6,200 / (2812)	3,600 / (1633)	5,250 / (2381)	3,000 / (1361)					5,500 / (2495)	3,200 / (1452)
-35' 0"	lbs / (kg)	6,400 / (2903)	3,800 / (1724)							4,900* / (2223)	4,150 / (1882)
-40' 0"	lbs / (kg)										
-45' 0"	lbs / (kg)										

Notes: Excavator lifting capacities

- Lifting capacities shown should not be exceeded. Weight of all lifting accessories must be deducted from the above lifting capacities.
- Lifting capacities are based on machine standing on firm, uniform supporting surface. User must make allowances for job conditions such as soft or uneven ground.
- Lifting capacities shown do not exceed 75% of minimum tipping loads or 87% of hydraulic capacities. **Capacities marked with an asterisk (*) are limited by hydraulic capacities.**
- Least stable position is over the side.
- Operator should be fully acquainted with the Operator's Manual & Operating Safety Booklet, furnished by LBX before operating the machine.
- Capacities apply only to the machine as originally manufactured and normally equipped by LBX Company, LLC.
- Lift capacity ratings are based on SAE J/ISO 10567, "Earthmoving Machinery – Hydraulic Excavators – Lift Capacity."

240 X2 LF Specifications

Bucket Sizes

Bucket Type	SAE Heaped Capacity		Width Outside Lip		Bucket Weight		Number of Teeth	Arm Length 26'-3" 8.00 m
	(yd ³)	(m ³)	(in)	(mm)	(lbs)	(kg)		
STDP	0.50	0.38	24	610	791	359	4	H
	0.66	0.50	30	762	889	403	4	M
	0.82	0.63	36	914	1007	457	5	L
DITCH	0.77	0.59	54	1372	903	410	0	L
	0.86	0.66	60	1524	964	437	0	L

STDP - Standard duty plate

Approval Code For Arm/Bucket Combinations

H..... Heavy material
(up to 3,370 lbs./yd³)
M..... Medium material
(up to 2,700 lbs./yd³)
L..... Light material
(up to 2,020 lbs./yd³)
N/A..... Not applicable

Standard Equipment

- KAB 515 sliding/reclining suspension seat with adjustable 4-inch armrests, lumbar support and retractable seat belt
- Safety glass front window with auto lock, windshield wiper and washer with intermittent speeds, Lexan® side and rear tinted windows
- 4-position tilting consoles with memory position and hydraulic lock-out
- Auto climate control a/c and heat
- AM/FM stereo with mute button, horn, interior light, digital clock, hour meter, floor mat, cup holder, sun shade, storage, LH and RH rear view mirrors
- Single pedal travel
- Travel alarm with cancel switch
- Vandal guarding with bolt-on FOG capability
- EPA Tier III Isuzu diesel engine
- Common rail fuel injection
- Turbocharger with intercooler
- Neutral safety start
- Idle start
- Glow plug pre-heat
- Auto engine warm-up
- Auto idling system
- One-touch idle
- Dual remote fuel filters with water separation
- Double element air filter with in-cab restriction indicator
- External fuel gauge
- Remote, full-flow engine oil filter
- Green plug engine oil drain
- EPF Engine Protection
- Emergency engine stop
- Open-center hydraulic system
- Four selectable work modes including attachment mode
- Auto power boost
- Auto swing priority
- Pre-set auxiliary pump settings - 10
- Auxiliary valve
- Stackable main control valve
- Control pattern changer
- Long undercarriage
- Sealed and lubricated track chain
- Two-speed with auto shift and straight travel
- Planetary drive
- Spring-applied, hydraulic release brake
- Hydraulic track adjust
- Swivel guard belly pan
- Track guide
- Vandal locks with common key
- 16,534 lb (7,500 kg) counterweight with lifting eyes
- Hand rail
- Tool box
- 33-ft 9-in boom
- EMS (Extended Maintenance System) 1,000 hour service interval throughout entire attachment except bucket
- 26-ft 3-in arm
- Tracks
31.5-in (800 mm) 3-bar grouser
- Attachment cushion valve
- Arm and boom holding valves
- Cylinder cushion
- Centralized lube bank
- Bucket anti-clatter device
- Illuminated LCD service monitor
- On-board diagnostic system
- Anti-theft device
- 12-volt accessory outlet
- 70-watt work lights on boom and upper

Options

- Arms to convert to standard excavator (requires counterweight conversion)
 - 9-ft 10-in (3.00 m)
 - 8-ft 2-in (2.50 m)
 - 11-ft 6-in (3.50 m)
- Cab lights - exterior
- Air-suspension seat
- Free swing
- Cyclone pre-clean air filter
- FOG guard
- Front guard - mesh or bars
- HD bucket linkage
- Track guides - triple
- Double-acting auxiliary hydraulics (not for hammer use)



LBX Company is the proud maker of quality Link-Belt excavators and is located in Lexington, KY.



Litho in USA 06/09 #LBX2164 (Supersedes #LBX2128)

© LBX and © Link-Belt are registered trademarks. Copyright 2009. All rights reserved. We are constantly improving our products and therefore reserve the right to change designs and specifications.

Courtesy of MachineMarket