

460X₂

specifications

Operating Weight: 105,600 lbs (47,900 kg)
 SAE Net Horsepower:
 with fan pump 329 HP (245 kW)
 without fan pump 362 HP (270 kW)
 Bucket Range: 1.58 - 4.05 yd³ (1.21 - 3.10 m³)

Engine

Isuzu AH-6UZ1XYSS Tier 3 turbocharged diesel engine with electronic fuel control, 6-cylinder, water-cooled, EGR with cooler, air-to-air intercooler, fuel cooler, auto idle-start, neutral safety start, glow plugs, auto warm-up, EPF engine protection, dual stage fuel filtration, remote oil filter, green plug oil drain.

SAE net horsepower
 with fan pump..... 329 HP (245 kW) @ 1,950 rpm
 without fan pump..... 362 HP (270 kW) @ 1,950 rpm
 Displacement 9.8 L
 Maximum torque..... 1,058 lbf-ft (1,435 N-m) @ 1,500 rpm
 Starter..... 24V-5.5kW
 Alternator..... 50 amp
 Battery..... 128 amp hours

Cab and Controls

Pressurized cab with climate control a/c and heat with defroster, LCD monitor, illuminated soft-touch switches, low-effort controls pre-wired for auxiliary hydraulics, control pattern changer, sliding LEXAN® MARGARD® windows, safety glass front window with automatic locking system and vandal cover, intermittent windshield wiper with washer, emergency rear window exit, polycarbonate roof hatch with sunshade, shockless cab suspension with four fluid mountings, KAB® reclining air suspension seat, sliding 4-position tilting control consoles, AM/FM radio, digital clock, dome light, seat belt, coat hook, cup holder, storage compartments, floor mat, footrests, ashtray, 24-volt cigarette lighter, 12-volt outlet, travel alarm, handrail, mirrors.

Four selectable working modes, anti-theft password protection system, on-board self-diagnostic system with memory, auto-idling system, one-touch decelerator, auto power boost, gate lock safety shutoff.

A/C output..... 18,100 BTU/hr
 Heater output..... 20,150 BTU/hr
 Sound level (inside cab, a/c on)..... 74.8 dB(A)
 Sound level (exterior) 104.4 dB(A)

Hydraulic System

Open-center system, two variable displacement axial piston pumps and one gear pump for pilot controls, main control valve with one 4-spool valve and one 5-spool valve with auxiliary spool - stackable, oil cooler, auto power boost, boom and arm holding valves, o-ring face seals, 6 micron return filter, firewall.

Hydraulic Pumps

Maximum flow 2 x 95.1 gpm (2 x 360 l/min)
 Pilot pump maximum flow 7.9 gpm (30 l/min)

Relief Valve Settings

Boom/arm/bucket..... 4,550 psi (314 bar)
 in Power-Boost Mode..... 4,980 psi (343 bar)
 Swing circuit 4,260 psi (294 bar)
 Travel circuit 4,980 psi (343 bar)

Hydraulic Cylinders

number of cylinders – bore x rod x stroke.
 Boom 2 – 6.7" x 4.5" x 61.0"
 (170 mm x 115 mm x 1 550 mm)
 Arm 1 – 7.5" x 5.1" x 71.7"
 (190 mm x 130 mm x 1 820 mm)
 Bucket 1 – 6.5" x 4.5" x 50.6"
 (165 mm x 115 mm x 1 285 mm)

Hydraulic Oil Filtration

Return filter..... 6 micron
 Pilot filter..... 8 micron
 Suction screen..... 105 micron



Swing

Planetary reduction powered by axial piston motor. Internal ring gear with grease cavity for swing pinion. Swing bearing is single-row shear type ball bearing. Mechanical disc swing brake. Auto power swing.

Swing speed..... 0 – 9 rpm
 Tail swing 12' 1" (3.68 m)
 Swing torque 110,634 lbf-ft. (150.0 kN•m)

Undercarriage

X Pattern carbody with sealed and strutted track chain, sealed rollers and idlers, two-speed independent hydrostatic travel with compact planetary final drive, disc type brakes, adjustable track tension, swivel guard.

Carrier rollers..... 2 per side
 Track rollers..... 9 per side
 Track link pitch..... 9.00" (228 mm)
 Shoes 50 per side
 Shoe width..... 35.4" (900 mm)
 Ground pressure 7.83 psi (.54 bar)

Lubricant and Coolant Capacity

Fuel tank..... 171.71 gal. (650 liters)
 Hydraulic tank..... 60.76 gal. (230 liters)
 Hydraulic system..... 121.52 gal. (460 liters)
 Final drive (per side)..... 3.96 gal. (15.0 liters)
 Swing drive..... 2.77 gal. (10.5 liters)
 Engine oil..... 9.51 gal. (36.0 liters)
 Cooling system..... 10.04 gal. (38.0 liters)

Travel System

Two-speed independent hydrostatic travel with compact axial piston motors. Hydraulic motor powered output shaft coupled to a planetary reduction unit and track sprocket. All hydraulic components mounted within the width of side frame. Automatic downshift. Spring applied, hydraulically released disc parking brake built into each motor. Each travel motor equipped with counterbalance valve to prevent overspeeding down an incline.

Max. travel speed 1.9 - 3.3 mph (3.1 - 5.3 km/h)
 Drawbar pull 76,660 lbf (341 kN)
 Gradeability 70% (35°)

Attachment

Boom 22' 11" (6.98 m)

Available Arms

Available Arms	Digging Force*
• 13' 1" (4.00 m)	37,090 lbf (165 kN)
with Auto Power-Boost applied	40,690 lbf (181 kN)
• 11' 1" (3.38 m)	42,490 lbf (189 kN)
with Auto Power-Boost applied	46,310 lbf (206 kN)
• 15' 11" (4.85 m)	32,600 lbf (145 kN)
with Auto Power-Boost applied	35,740 lbf (159 kN)
• 8' 4" (2.53 m)	52,160 lbf (232 kN)
with Auto Power-Boost applied	57,100 lbf (254 kN)

Bucket Digging Force 55,530 lbf (247 kN)
 with Auto Power-Boost applied 60,700 lbf (270 kN)

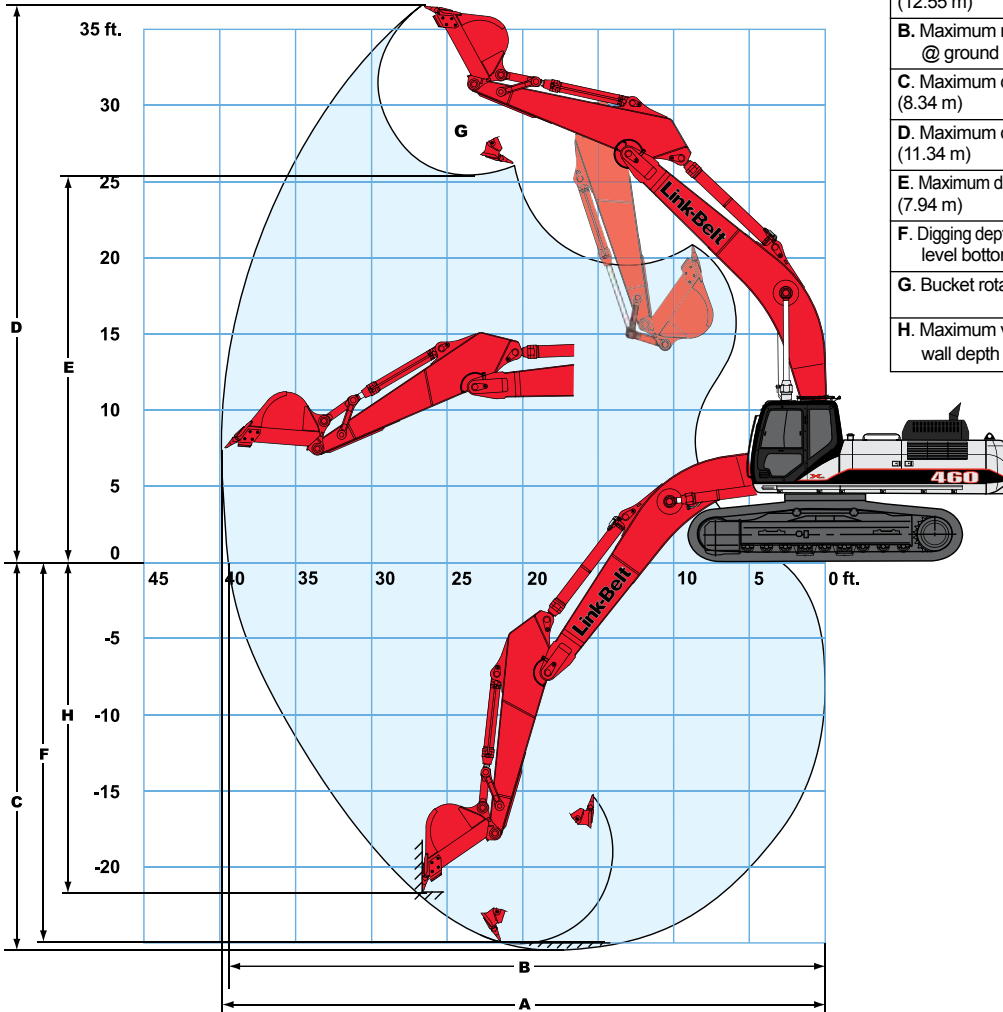
*Digging force ratings are based on ISO 6015, "Earthmoving Machinery – Hydraulic Excavators – Tool Forces."

Operating Weight

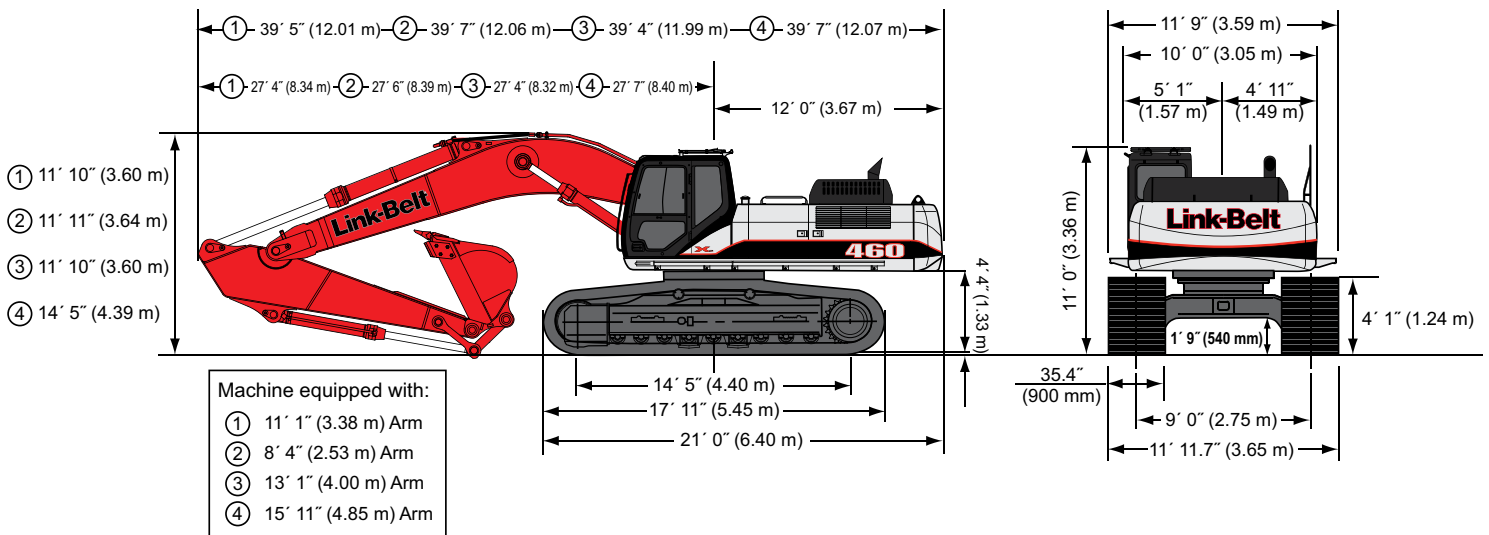
Working weight with 35.4" (900 mm) shoes, 22' 11" (6.98 m) boom, 11' 1" (3.38 m) arm 3,200 lb. (1 450 kg) bucket, 22,046 lb. (10,000 kg) counterweight, fixed sideframe undercarriage 105,600 lbs (47,900 kg)

460 X2 Specifications

Working Ranges



Machine equipped with 22' 11" (6.98 m) boom	13' 1" Arm (4.00 m)	11' 1" Arm (3.38 m)	15' 11" Arm (4.85 m)	8' 4" Arm (2.53 m)
A. Maximum reach (12.55 m)	41' 2" (12.00 m)	39' 4" (13.40 m)	44' 0" (11.23 m)	36' 10"
B. Maximum reach @ ground level	40' 5" (12.33 m)	38' 7" (11.77 m)	43' 4" (13.20 m)	36' 1" (10.99 m)
C. Maximum dig depth (8.34 m)	27' 4" (7.72 m)	25' 4" (9.20 m)	30' 2" (6.87 m)	22' 6"
D. Maximum dig height (11.34 m)	37' 2" (11.14 m)	36' 7" (11.86 m)	38' 11" (10.82 m)	35' 6"
E. Maximum dump height (7.94 m)	26' 1" (7.74 m)	25' 5" (8.42 m)	27' 7" (7.42 m)	24' 4"
F. Digging depth 8' (2.44 m) level bottom	26' 11" (8.21 m)	24' 10" (7.58 m)	29' 9" (9.08 m)	21' 11" (6.69 m)
G. Bucket rotation	176°	176°	176°	176°
H. Maximum vertical wall depth	23' 6" (7.16 m)	21' 7" (6.57 m)	27' 0" (8.22 m)	18' 7" (5.67 m)



Lifting Capacities 460 X2

13' 1" (4.00 m) Arm with standard counterweight

22' 11" (6.98 m) Boom and 3,020 lb (1 370 kg) bucket. Auto Power-Up Mode Applied

Bucket Hook Height		Radius of Load														Cap. at Max. Reach	
		10' 0" (3.05 m)		15' 0" (4.57 m)		20' 0" (6.10 m)		25' 0" (7.62 m)		30' 0" (9.14 m)		35' 0" (10.66 m)					
		End	Side	End	Side	End	Side	End	Side	End	Side	End	Side	End	Side		
+35' 0" (10.66 m)	lbs. kg																
+30' 0" (9.14 m)	lbs. kg															9,100* 4 128*	9,100* 4 128*
+25' 0" (7.62 m)	lbs. kg															8,700* 3 946*	8,700* 3 946*
+20' 0" (6.10 m)	lbs. kg									18,900* 8 573*	16,250 7 371				8,600* 3 901*	8,600* 3 901*	
+15' 0" (4.57 m)	lbs. kg							22,250* 10 093*	21,700 9 843	20,050* 9 095*	15,750 7 144	12,350* 5 602*	11,700 5 307	8,750* 3 969*	8,750* 3 969*		
+10' 0" (3.05 m)	lbs. kg	43,250* 19 618*	43,250* 19 618*	41,300* 18 734*	41,300* 18 734*	30,450* 13 812*	29,250 13 268	24,850* 11 272*	20,500 9 299	21,500* 9 752*	15,100 6 849	17,400* 7 893*	11,400 5 171	9,100* 4 128*	9,050 4 105		
+5' 0" (1.52 m)	lbs. kg	19,300* 8 754*	19,300* 8 754*	49,900* 22 635*	42,000 19 051	34,900* 15 831*	27,200 12 338	27,350* 12 406*	19,350 8 777	22,900* 10 387*	14,450 6 555	18,900 8 573	11,050 5 012	9,700* 4 400*	8,950 4 060		
Ground Line	lbs. kg	24,750* 11 227*	24,750* 11 227*	52,650* 23 882	39,650 17 985	37,950* 17 214*	25,750 11 680	29,200* 13 245*	18,400 8 346	23,750 10 773	13,850 6 282	18,600 8 437	10,750 4 876	10,600* 4 808*	9,200 4 173		
-5' 0" (1.52 m)	lbs. kg	32,700* 14 833*	32,700* 14 833*	53,250* 24 154*	38,950 17 668	38,750* 17 577*	24,900 11 295	29,950* 13 585*	17,850 8 097	23,350 10 592	13,500 6 124	15,000* 6 804*	10,600 4 808	12,000* 5 443*	9,950 4 513		
-10' 0" (3.05 m)	lbs. kg	42,400* 19 233*	42,400* 19 233*	50,700* 22 998*	39,050 17 713	37,650* 17 078*	24,700 11 204	29,200* 13 245*	17,600 7 983	23,100* 10 478*	13,400 6 078			14,150* 6 418*	11,450 5 194		
-15' 0" (4.57 m)	lbs. kg	57,050* 25 878*	57,050* 25 878*	45,350* 20 571*	39,650 17 985	34,250* 15 536*	24,950 11 317	26,400* 11 975*	17,800 8 074	19,400* 8 800*	13,700 6 214			16,100* 7 303*	14,300 6 486		
-20' 0" (6.10 m)	lbs. kg	48,600* 22 045*	48,600* 22 045*	36,050* 16 352*	36,050* 16 352*	27,250* 12 361	25,700 11 658	19,250* 8 732*	18,500 8 392								

11' 1" (3.38 m) Arm with standard counterweight

22' 11" (6.98 m) Boom and 3,197 lb (1 450 kg) bucket. Auto Power-Up Mode Applied

Bucket Hook Height		Radius of Load												Cap. at Max. Reach	
		10' 0" (3.05 m)		15' 0" (4.57 m)		20' 0" (6.10 m)		25' 0" (7.62 m)		30' 0" (9.14 m)					
		End	Side	End	Side	End	Side	End	Side	End	Side	End	Side		
+30' 0" (9.14 m)	lbs. kg													11,650* 5 284*	11,650* 5 284*
+25' 0" (7.62 m)	lbs. kg													11,150* 5 058*	11,150* 5 058*
+20' 0" (6.10 m)	lbs. kg							21,600* 9 798*	21,600* 9 798*	20,200* 9 163*	15,700 7 122	11,000* 4 990*	11,000* 4 990*		
+15' 0" (4.57 m)	lbs. kg					27,900* 12 655*	27,900* 12 655*	23,650* 10 728*	21,050 9 548	21,100* 9 571*	15,300 6 940	11,150* 5 058*	10,200 4 627		
+10' 0" (3.05 m)	lbs. kg			44,800* 20 321*	44,100 20 004	32,300* 14 651*	28,300 12 837	26,050* 11 816*	19,950 9 049	22,300* 10 115*	14,700 6 668	11,550* 5 239*	9,650 4 377		
+5' 0" (1.52 m)	lbs. kg			50,650* 22 975*	40,550 18 393	36,300* 16 466*	26,400 11 975	28,150* 12 769*	18,850 8 550	23,450* 10 637*	14,100 6 396	12,300* 5 579*	9,600 4 355		
Ground Line	lbs. kg	22,500* 10 206*	22,500* 10 206*	52,850* 23 973*	38,900 17 645	38,450* 17 441*	25,200 11 431	29,550* 13 404*	18,050 8 187	23,500 10 660	13,600 6 169	13,400 6 078*	9,950 4 513		
-5' 0" (1.52 m)	lbs. kg	34,100* 15 468*	34,100* 15 468*	52,100* 23 633*	38,900 17 645	38,400* 17 418*	24,650 11 181	29,750* 13 495*	17,600 7 983	23,200 10 524	13,350 6 056	15,150* 6 872*	10,850 4 922		
-10' 0" (3.05 m)	lbs. kg	46,700* 21 183*	46,700* 21 183*	48,350* 21 932*	39,200 17 781	36,450* 16 534*	24,650 11 181	28,300* 12 837*	17,550 7 961	21,850* 9 911*	13,400 6 078	17,550* 7 961*	12,700 5 761		
-15' 0" (4.57 m)	lbs. kg	56,050* 25 424*	56,050* 25 424*	41,650* 18 892*	39,750 18 031	31,800* 14 424*	25,100 11 385	24,100* 10 932*	17,900 8 119			15,300* 6 940*	15,300* 6 940*		
-20' 0" (6.10 m)	lbs. kg			30,250* 13 721*	30,250* 13 721*	22,500* 10 206*	22,500* 10 206*								

Notes: Excavator lifting capacities

- Lifting capacities shown should not be exceeded. Weight of all lifting accessories must be deducted from the above lifting capacities.
- Lifting capacities are based on machine standing on firm, uniform supporting surface. User must make allowances for job conditions such as soft or uneven ground.
- Lifting capacities shown do not exceed 75% of minimum tipping loads or 87% of hydraulic capacities. **Capacities marked with an asterisk (*) are limited by hydraulic capacities.**
- Least stable position is over the side.
- Operator should be fully acquainted with the Operator's Manual & Operating Safety Booklet, furnished by LBX before operating the machine.
- Capacities apply only to the machine as originally manufactured and normally equipped by LBX Company LLC.
- Lift capacity ratings are based on SAE J1097, "Earthmoving Machinery – Hydraulic Excavators – Lift Capacity".

Lifting Capacities 460 X2

13' 1" (4.00 m) Arm with counterweight removal device

22' 11" (6.98 m) Boom and 3,020 lb (1 370 kg) bucket. Auto Power-Up Mode Applied

Bucket Hook Height		Radius of Load														
		10' 0" (3.05 m)		15' 0" (4.57 m)		20' 0" (6.10 m)		25' 0" (7.62 m)		30' 0" (9.14 m)		35' 0" (10.66 m)		Cap. at Max. Reach		
		End	Side	End	Side	End	Side	End	Side	End	Side	End	Side	End	Side	
+35' 0" (10.66 m)	lbs. kg															
+30' 0" (9.14 m)	lbs. kg														9,100* 4 128*	9,100* 4 128*
+25' 0" (7.62 m)	lbs. kg														8,700* 3 946*	8,700* 3 946*
+20' 0" (6.10 m)	lbs. kg									18,900* 8 573*	15,400 6 985				8,600* 3 901*	8,600* 3 901*
+15' 0" (4.57 m)	lbs. kg							22,250* 10 093*	20,650 9 367	20,050* 9 095*	14,900 6 759	12,350* 5 602*	11,000 4 990	8,750* 3 969*	8,750* 3 969*	
+10' 0" (3.05 m)	lbs. kg	43,250* 19 618*	43,250* 19 618*	41,300* 18 734*	41,300* 18 734*	30,450* 13 812*	27,900 12 655	24,850* 11 272*	19,450 8 823	21,500* 9 752*	14,250 6 464	17,400* 7 893*	10,700 4 854	9,100* 4 128*	8,450 3 833	
+5' 0" (1.52 m)	lbs. kg	19,300* 8 754*	19,300* 8 754*	49,900* 22 635*	39,900 18 099	34,900* 15 831*	25,800 11 703	27,350* 12 406*	18,300 8 301	22,900* 10 387*	13,600 6 169	18,050 8 187	10,350 4 695	9,700* 4 400*	8,350 3 788	
Ground Line	lbs. kg	24,750* 11 227*	24,750* 11 227*	52,650* 23 882*	37,600 17 055	37,950* 17 214*	24,350 11 045	29,200* 13 245*	17,350 7 870	22,650* 10 274	13,050 5 919	17,700 8 029	10,050 4 559	10,600* 4 808*	8,600 3 901	
-5' 0" (1.52 m)	lbs. kg	32,700* 14 833*	32,700* 14 833*	53,250 24 154	36,850 16 715	38,750* 17 577*	23,500 10 660	29,650* 13 449	16,800 7 620	22,250* 10 093	12,650 5 738	15,000* 6 804*	9,900 4 491	12,000* 5 443*	9,300 4 218	
-10' 0" (3.05 m)	lbs. kg	42,400* 19 233*	42,400* 19 233*	50,700* 22 998*	37,000 16 783	37,650* 17 078*	23,300 10 569	29,200* 13 245*	16,550 7 507	22,150* 10 047	12,550 5 693			14,150* 6 418*	10,700 4 854	
-15' 0" (4.57 m)	lbs. kg	57,050* 25 878*	57,050* 25 878*	45,350* 20 571*	37,550 17 033	34,250* 15 536*	23,550 10 682	26,400* 11 975*	16,750 7 598	19,400* 8 800*	12,850 5 829			16,100* 7 303*	13,450 6 101	
-20' 0" (6.10 m)	lbs. kg	48,600* 22 045*	48,600* 22 045*	36,050* 16 352*	36,050* 16 352*	27,250* 12 361*	24,350 11 045	19,250* 8 732*	17,450 7 915							
-25' 0" (7.62 m)	lbs. kg															

11' 1" (3.38 m) Arm with counterweight removal device

22' 11" (6.98 m) Boom and 3,197 lb (1 450 kg) bucket. Auto Power-Up Mode Applied

Bucket Hook Height		Radius of Load										Cap. at Max. Reach			
		10' 0" (3.05 m)		15' 0" (4.57 m)		20' 0" (6.10 m)		25' 0" (7.62 m)		30' 0" (9.14 m)		End	Side		
		End	Side	End	Side	End	Side	End	Side	End	Side	End	Side		
+30' 0" (9.14 m)	lbs. kg													11,650* 5 284*	11,650* 5 284*
+25' 0" (7.62 m)	lbs. kg													11,150* 5 058*	11,150* 5 058*
+20' 0" (6.10 m)	lbs. kg							21,600* 9 798*	20,950 9 503	20,200* 9 163*	14,850 6 736	11,000* 4 990*	10,550 4 785		
+15' 0" (4.57 m)	lbs. kg					27,900* 12 655*	27,900* 12 655*	23,650* 10 728*	20,000 9 072	21,100* 9 571*	14,450 6 555	11,150* 5 058*	9,550 4 332		
+10' 0" (3.05 m)	lbs. kg			44,800* 20 321*	42,050 19 074	32,300* 14 651*	26,900 12 202	26,050* 11 816*	18,900 8 573	22,300* 10 115*	13,900 6 305	11,550* 5 239*	9,050 4 105		
+5' 0" (1.52 m)	lbs. kg			50,650* 22 975*	38,450 17 441	36,300* 16 466*	25,050 11 363	28,150* 12 769*	17,800 8 074	22,950* 10 410	13,250 6 010	12,300* 5 579*	8,950 4 060		
Ground Line	lbs. kg	22,500* 10 206*	22,500* 10 206*	52,850* 23 973*	36,850 16 715	38,450* 17 441*	23,800 10 796	29,550* 13 404*	17,000 7 711	22,400* 10 161	12,800 5 806	13,400* 6 078*	9,250 4 196		
-5' 0" (1.52 m)	lbs. kg	34,100* 15 468*	34,100* 15 468*	52,100* 23 633*	36,800 16 692	38,400 17 418	23,250 10 546	29,400* 13 336	16,550 7 507	22,100* 10 025	12,500 5 670	15,150* 6 872*	10,150 4 604		
-10' 0" (3.05 m)	lbs. kg	46,700* 21 183*	46,700* 21 183*	48,350* 21 932*	37,150 16 851	36,450* 16 534*	23,250 10 546	28,300* 12 837*	16,500 7 484	21,850* 9 911*	12,600 5 715	17,550* 7 961*	11,950 5 421		
-15' 0" (4.57 m)	lbs. kg	56,050* 25 424*	56,050* 25 424*	41,650* 18 892*	37,900 17 191	31,800* 14 424*	23,700 10 750	24,100* 10 932*	16,850 7 643				15,300* 6 940*	15,300* 6 940*	
-20' 0" (6.10 m)	lbs. kg			30,250* 13 721*	30,250* 13 721*	22,500* 10 206*	22,500* 10 206*								

460 X2 Specifications

Lifting Capacities 460 X2

15' 11" (4.85 m) Arm with standard counterweight

22' 11" (6.98 m) Boom and 2,778 lb (1 260 kg) bucket. Auto Power-Up Mode Applied

Bucket Hook Height	Radius of Load																	
	10' 0" (3.05 m)		15' 0" (4.57 m)		20' 0" (6.10 m)		25' 0" (7.62 m)		30' 0" (9.14 m)		35' 0" (10.66 m)		Cap. at Max. Reach					
	End	Side	End	Side	End	Side	End	Side	End	Side	End	Side	End	Side				
+35' 0" (10.66 m)	lbs. kg														8,300*	8,300*	3 765*	3 765*
+30' 0" (9.14 m)	lbs. kg														7,650*	7,650*	3 470*	3 470*
+25' 0" (7.62 m)	lbs. kg														7,350*	7,350*	3 334*	3 334*
+20' 0" (6.10 m)	lbs. kg									16,750*	16,600*	12,950	12,200		7,250*	7,250*	3 289*	3 289*
+15' 0" (4.57 m)	lbs. kg									18,100*	16,100	16,300*	11,950		7,300*	7,300*	3 311*	3 311*
+10' 0" (3.05 m)	lbs. kg					27,050*	27,050*	22,550*	21,050	19,750*	15,350	17,900*	11,550		7,550*	7,550*	3 425*	3 425*
+5' 0" (1.52 m)	lbs. kg	28,900*	28,900*	45,200*	43,650	31,950*	27,950	25,400*	19,700	21,450*	14,600	18,800*	11,100		8,000*	7,800	3 629*	3 538
Ground Line	lbs. kg	25,350*	25,350*	51,200*	40,300	36,000*	26,050	27,750*	18,550	22,800*	13,850	18,500	10,650		8,700*	7,950	3 946*	3 606
-5' 0" (1.52 m)	lbs. kg	29,850*	29,850*	52,750*	38,650	38,050*	24,850	29,250*	17,750	23,200	13,350	18,200	10,350		9,700*	8,500	4 400*	3 856
-10' 0" (3.05 m)	lbs. kg	38,350*	38,350*	52,000*	38,300	38,000*	24,300	29,400*	17,300	22,900	13,050	18,100	10,250		11,300*	9,550	5 126*	4 332
-15' 0" (4.57 m)	lbs. kg	48,300*	48,300*	48,450*	38,550	36,000*	24,300	27,850*	17,250	21,750*	13,100				13,900*	11,500	6 305*	5 216
-20' 0" (6.10 m)	lbs. kg	58,700*	58,700*	41,550*	39,400	31,200*	24,800	23,650*	17,650						13,450*	13,450*	6 101*	6 101*
-25' 0" (7.62 m)	lbs. kg	40,300*	40,300*	29,650*	29,650*	21,650*	21,650*											

8' 4" (2.53 m) Arm with standard counterweight

22' 11" (6.98 m) Boom and 3,351 lb (1 520 kg) bucket. Auto Power-Up Mode Applied

Bucket Hook Height	Radius of Load															
	10' 0" (3.05 m)		15' 0" (4.57 m)		20' 0" (6.10 m)		25' 0" (7.62 m)		30' 0" (9.14 m)		Cap. at Max. Reach					
	End	Side	End	Side	End	Side	End	Side	End	Side	End	Side				
+30' 0" (9.14 m)	lbs. kg												16,550*	16,550*	7 507*	7 507*
+25' 0" (7.62 m)	lbs. kg												15,800*	15,050	7 167*	6 827
+20' 0" (6.10 m)	lbs. kg							24,050*	21,450				15,600*	12,800	7 076*	5 806
+15' 0" (4.57 m)	lbs. kg			40,700*	40,700*	31,000*	29,500	25,800*	20,600	22,850*	15,000	15,800*	11,550			
+10' 0" (3.05 m)	lbs. kg			48,800*	41,850	34,950*	27,500	27,850*	19,550	23,700*	14,550	16,350*	10,950			
+5' 0" (1.52 m)	lbs. kg			41,550*	38,950	38,200*	25,900	29,450*	18,650	23,950	14,050	17,300*	10,900			
Ground Line	lbs. kg			48,400*	38,450	38,900*	25,050	30,150*	18,050	23,550	13,750	18,850*	11,400			
-5' 0" (1.52 m)	lbs. kg	37,400*	37,400*	49,900*	39,800	37,850*	24,850	29,500*	17,800	23,100*	13,700	19,450*	12,700			
-10' 0" (3.05 m)	lbs. kg	53,000*	53,000*	44,600*	40,150	34,500*	25,100	26,700*	17,950							
-15' 0" (4.57 m)	lbs. kg	44,600*	44,600*	35,850*	35,850*	27,800*	25,850									
-20' 0" (6.10 m)	lbs. kg															

460 X2 Specifications

Lifting Capacities 460 X2

15' 11" (4.85 m) Arm with counterweight removal device

22' 11" (6.98 m) Boom and 2,778 lb (1 260 kg) bucket. Auto Power-Up Mode Applied

Bucket Hook Height		Radius of Load														
		10' 0" (3.05 m)		15' 0" (4.57 m)		20' 0" (6.10 m)		25' 0" (7.62 m)		30' 0" (9.14 m)		35' 0" (10.66 m)		Cap. at Max. Reach		
		End	Side	End	Side	End	Side	End	Side	End	Side	End	Side	End	Side	
+35' 0" (10.66 m)	lbs. kg														8,300* 3 765*	8,300* 3 765*
+30' 0" (9.14 m)	lbs. kg														7,650* 3 470*	7,650* 3 470*
+25' 0" (7.62 m)	lbs. kg														7,350* 3 334*	7,350* 3 334*
+20' 0" (6.10 m)	lbs. kg									16,750* 7 598*	15,850* 7 190	12,950* 5 874*	11,500* 5 216	7,250* 3 289*	7,250* 3 289*	
+15' 0" (4.57 m)	lbs. kg									18,100* 8 210*	15,250* 6 917	16,300* 7 394*	11,250* 5 103	7,300* 3 311*	7,300* 3 311*	
+10' 0" (3.05 m)	lbs. kg					27,050* 12 270*	27,050* 12 270*	22,550* 10 229*	20,000* 9 072	19,750* 8 959*	14,550* 6 600	17,900* 8 119*	10,850* 4 922	7,550* 3 425*	7,350* 3 334	
+5' 0" (1.52 m)	lbs. kg	28,900* 13 109*	28,900* 13 109*	45,200* 20 503*	41,550* 18 847	31,950* 14 493*	26,550* 12 043	25,400* 11 521*	18,650* 8 460	21,450* 9 730*	13,750* 6 237	18,100* 8 210	10,400* 4 717	8,000* 3 629*	7,250* 3 289	
Ground Line	lbs. kg	25,350* 11 499*	25,350* 11 499*	51,200* 23 224*	38,200* 17 328	36,000* 16 330*	24,650* 11 181	27,750* 12 587*	17,500* 7 938	22,700* 10 297	13,050* 5 919	17,650* 8 006	9,950* 4 513	8,700* 3 946*	7,400* 3 357	
-5' 0" (1.52 m)	lbs. kg	29,850* 13 540*	29,850* 13 540*	52,750* 23 927*	36,550* 16 579	38,050* 17 259*	23,450* 10 637	29,250* 13 268*	16,700* 7 575	22,150* 10 047	12,500* 5 670	17,300* 7 847	9,650* 4 377	9,700* 4 400*	7,900* 3 583	
-10' 0" (3.05 m)	lbs. kg	38,350* 17 396*	38,350* 17 396*	52,000* 23 587*	36,200* 16 420	38,000* 17 237*	22,900* 10 387	29,100* 13 200	16,250* 7 371	21,850* 9 911	12,250* 5 557	17,200* 7 802	9,550* 4 332	11,300* 5 126*	8,900* 4 037	
-15' 0" (4.57 m)	lbs. kg	48,300* 21 909*	48,300* 21 909*	48,450* 21 977*	36,500* 16 556	36,000* 16 330*	22,900* 10 387	27,850* 12 633*	16,200* 7 348	21,750* 9 866*	12,250* 5 557			13,900* 6 305*	10,750* 4 876	
-20' 0" (6.10 m)	lbs. kg	58,700* 26 626*	58,700* 26 626*	41,550* 18 847*	37,350* 16 942	31,200* 14 152*	23,400* 10 614	23,650* 10 728*	16,600* 7 530					13,450* 6 101*	13,450* 6 101*	
-25' 0" (7.62 m)	lbs. kg	40,300* 18 280*	40,300* 18 280*	29,650* 13 449*	29,650* 13 449*	21,650* 9 820*	21,650* 9 820*									

8' 4" (2.53 m) Arm with counterweight removal device

22' 11" (6.98 m) Boom and 3,351 lb (1 520 kg) bucket. Auto Power-Up Mode Applied

Bucket Hook Height		Radius of Load													
		10' 0" (3.05 m)		15' 0" (4.57 m)		20' 0" (6.10 m)		25' 0" (7.62 m)		30' 0" (9.14 m)		Cap. at Max. Reach			
		End	Side	End	Side	End	Side	End	Side	End	Side	End	Side		
+30' 0" (9.14 m)	lbs. kg													16,550* 7 507*	16,550* 7 507*
+25' 0" (7.62 m)	lbs. kg													15,800* 7 167*	14,250* 6 464
+20' 0" (6.10 m)	lbs. kg							24,050* 10 909*	20,400* 9 253					15,600* 7 076*	12,050* 5 466
+15' 0" (4.57 m)	lbs. kg			40,700* 18 462*	40,700* 18 462*	31,000* 14 062*	28,100* 12 746	25,800* 11 703*	19,550* 8 868	22,850* 10 365*	14,150* 6 418	15,800* 7 167*	10,850* 4 922		
+10' 0" (3.05 m)	lbs. kg			48,800* 22 136	39,750* 18 031	34,950* 15 853*	26,100* 11 839	27,850* 12 633*	18,500* 8 392	23,400* 10 614	13,700* 6 214	16,350* 7 416*	10,250* 4 649		
+5' 0" (1.52 m)	lbs. kg			41,550* 18 847*	37,050* 16 806	38,200* 17 328*	24,500* 11 113	29,450* 13 359*	17,600* 7 983	22,850* 10 365	13,250* 6 010	17,300* 7 847*	10,200* 4 627		
Ground Line	lbs. kg			48,400* 21 954*	24,500* 11 113	38,900* 17 645*	23,650* 10 728	29,850* 13 540	17,000* 7 711	22,500* 10 206	12,900* 5 851	18,650* 8 460	10,700* 4 854		
-5' 0" (1.52 m)	lbs. kg	37,400* 16 965*	37,400* 16 965*	49,900* 22 635*	37,700* 17 101	37,850* 17 169*	23,450* 10 637	29,500* 13 381*	16,750* 7 598	22,450* 10 183	12,850* 5 829	19,450* 8 823*	11,950* 5 421		
-10' 0" (3.05 m)	lbs. kg	53,000* 24 041*	53,000* 24 041*	44,600* 20 231*	38,100* 17 282	34,500* 15 649*	23,750* 10 773	26,700* 12 111*	16,900* 7 666					17,800* 8 074*	14,550* 6 600
-15' 0" (4.57 m)	lbs. kg	44,600* 20 231*	44,600* 20 231*	35,850* 16 262*	35,850* 16 262*	27,800* 12 610*	24,450* 11 091								
-20' 0" (6.10 m)	lbs. kg														

460 X2 Specifications

Bucket Sizes

Bucket Type	SAE Heaped Capacity	Width Outside Lip	Bucket Weight	Number of Teeth	Arm	Arm	Arm	Arm
					13' 1" (4.00 m)	11' 1" (3.38 m)	15' 11" (4.85 m)	8' 4" (2.53 m)
STDP	1.76 yd ³ (1.35 m ³)	36" (914 mm)	2,906 lb. (1 318 kg)	4	H	H	H	H
	2.14 yd ³ (1.64 m ³)	42" (1 067 mm)	3,206 lb. (1 454 kg)	5	H	H	M	H
	2.52 yd ³ (1.93 m ³)	48" (1 219 mm)	3,405 lb. (1 545 kg)	5	M	H	L	H
	2.91 yd ³ (2.22 m ³)	54" (1 372 mm)	3,705 lb. (1 681 kg)	6	L	M	L	H
	3.29 yd ³ (2.52 m ³)	60" (1 524 mm)	3,903 lb. (1 770 kg)	6	L	L	N/A	M
	4.05 yd ³ (3.10 m ³)	66" (1 676 mm)	4,698 lb. (2 131 kg)	7	N/A	N/A	N/A	L
HDP	1.73 yd ³ (1.32 m ³)	36" (914 mm)	3,507 lb. (1 591 kg)	4	H	H	H	H
	2.10 yd ³ (1.61 m ³)	42" (1 067 mm)	3,848 lb. (1 745 kg)	5	H	H	M	H
	2.48 yd ³ (1.90 m ³)	48" (1 219 mm)	4,108 lb. (1 863 kg)	5	M	M	L	H
	2.85 yd ³ (2.18 m ³)	54" (1 372 mm)	4,448 lb. (2 018 kg)	6	L	M	L	M
	3.24 yd ³ (2.48 m ³)	60" (1 524 mm)	4,707 lb. (2 135 kg)	6	L	L	N/A	M
XDP	1.58 yd ³ (1.21 m ³)	36" (914 mm)	4,218 lb. (1 913 kg)	4	H	H	H	H
	1.93 yd ³ (1.48 m ³)	42" (1 067 mm)	4,537 lb. (2 058 kg)	4	H	H	M	H
	2.28 yd ³ (1.74 m ³)	48" (1 219 mm)	4,961 lb. (2 250 kg)	5	M	H	L	H
Power Buckets	1.64 yd ³ (1.25 m ³)	36" (914 mm)	5,460 lb. (2 477 kg)	4	H	H	M	H
	1.97 yd ³ (1.51 m ³)	42" (1 067 mm)	5,829 lb. (2 644 kg)	5	M	H	L	H
	2.31 yd ³ (1.77 m ³)	48" (1 219 mm)	6,120 lb. (2 776 kg)	5	L	M	L	H
	2.65 yd ³ (2.03 m ³)	54" (1 372 mm)	6,489 lb. (2 943 kg)	6	L	L	N/A	M
	2.99 yd ³ (2.29 m ³)	60" (1 524 mm)	6,780 lb. (3 075 kg)	6	N/A	L	N/A	M

Approval Code For Arm/Bucket Combinations	
H.....	Heavy material (up to 3,370 lbs./ yd ³)
M.....	Medium material (up to 2,700 lbs./ yd ³)
L.....	Light material (up to 2,020 lbs./ yd ³)
N/A.....	Not applicable

STDP - Standard duty plate
HDP - Heavy duty plate
XDP - Extreme duty plate
Power Buckets - can only be used with the ESCO multi-pin grabber

460 X2 Specifications

Standard Equipment

- KAB sliding/reclining air suspension seat with adjustable 4-inch armrests, lumbar support and retractable seat belt
- Safety glass front window with auto lock, windshield wiper and washer with intermittent speeds, Lexan® side and rear tinted windows
- 4-position tilting consoles with memory position and hydraulic lock-out
- Auto climate control a/c and heat
- AM/FM stereo with mute button, horn, interior light, digital clock, hour meter, floor mat, cup holder, sun shade, storage, LH and RH rear view mirrors
- Single pedal travel
- Travel alarm with cancel switch
- Vandal guarding with bolt-on FOG capability
- EPA Tier III Isuzu diesel engine
- Common rail fuel injection
- Turbocharger with intercooler
- Neutral safety start
- Idle start
- Glow plug pre-heat
- Auto engine warm-up
- Reversible cooling fan
- Auto idling system
- One-touch idle
- Dual remote fuel filters with water separation
- Double element air filter with in-cab restriction indicator
- Cyclone pre-clean air filter
- External fuel gauge
- Remote, full-flow engine oil filter
- Green plug engine oil drain
- EPF Engine Protection
- Emergency engine stop
- Open-center hydraulic system
- Four selectable work modes including attachment mode
- Auto power boost
- Auto swing priority
- Pre-set auxiliary pump settings - 10
- Auxiliary valve
- Stackable main control valve
- Auxiliary pipe brackets
- Control levers pre-wired for auxiliary
- Control pattern changer
- Long undercarriage
- Sealed and lubricated track chain
- Two-speed with auto shift and straight travel
- Planetary drive
- Spring-applied, hydraulic release brake
- Hydraulic track adjust
- Swivel guard belly pan
- Track guides
- Vandal locks with common key
- Catwalks
- Hand rail
- Tool box
- 22,046 lb. (10,000 kg) counterweight with lifting eyes
- 22-ft 11-in (6.98m) boom
- EMS (Extended Maintenance System) 1,000 hour service interval throughout entire attachment except bucket
- Attachment cushion valve
- Arm and boom speed assistance
- Arm and boom regeneration
- Arm and boom holding valves
- Cylinder cushion
- Centralized lube bank
- Bucket anti-clatter device
- Illuminated LCD service monitor
- On-board diagnostic system
- Anti-theft device
- 12-volt accessory outlet
- 70-watt work lights on boom and upper

Options

- Arms
 - 13-ft 1-in (4.00 m)
 - 11-ft 1-in (3.38 m)
 - 15-ft 11-in (4.85 m)
 - 8-ft 4-in (2.53 m)
- Tracks
 - 29.5-in (750 mm) 2-bar grouser
 - 35.4-in (900 mm) 3-bar grouser
- Hydraulics
 - Single-acting with switch or pedal activation
 - Multi-function with switch or pedal activation and in-cab flow direction control
 - Thumb hydraulics with switch activation
 - 2nd and 3rd auxiliary with pedal activation
- Couplers
 - ESCO multi-pin grabber
 - Dromone automatic quick-coupler
- Thumbs
 - Universal rigid
 - Hydraulic non-link
 - Hydraulic non-link for coupler
 - Hydraulic link
 - Hydraulic link for coupler
- Cab lights - exterior
- Free Swing
- FOG guard
- Front guard - mesh or bars
- HD bucket linkage
- Full-length track guards
- Attachment reinforcement plating
- Hydraulic counterweight removal with 20,283 lb (9,200 kg) counterweight



LBX Company is the proud maker of quality Link-Belt excavators and is located in Lexington, KY.

Litho in USA 6/11 #LBX2185 (supersedes LBX2166)

© LBX and © Link-Belt are registered trademarks. Copyright 2011. All rights reserved. We are constantly improving our products and therefore reserve the right to change designs and specifications.



www.lbxco.com