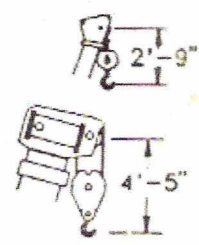
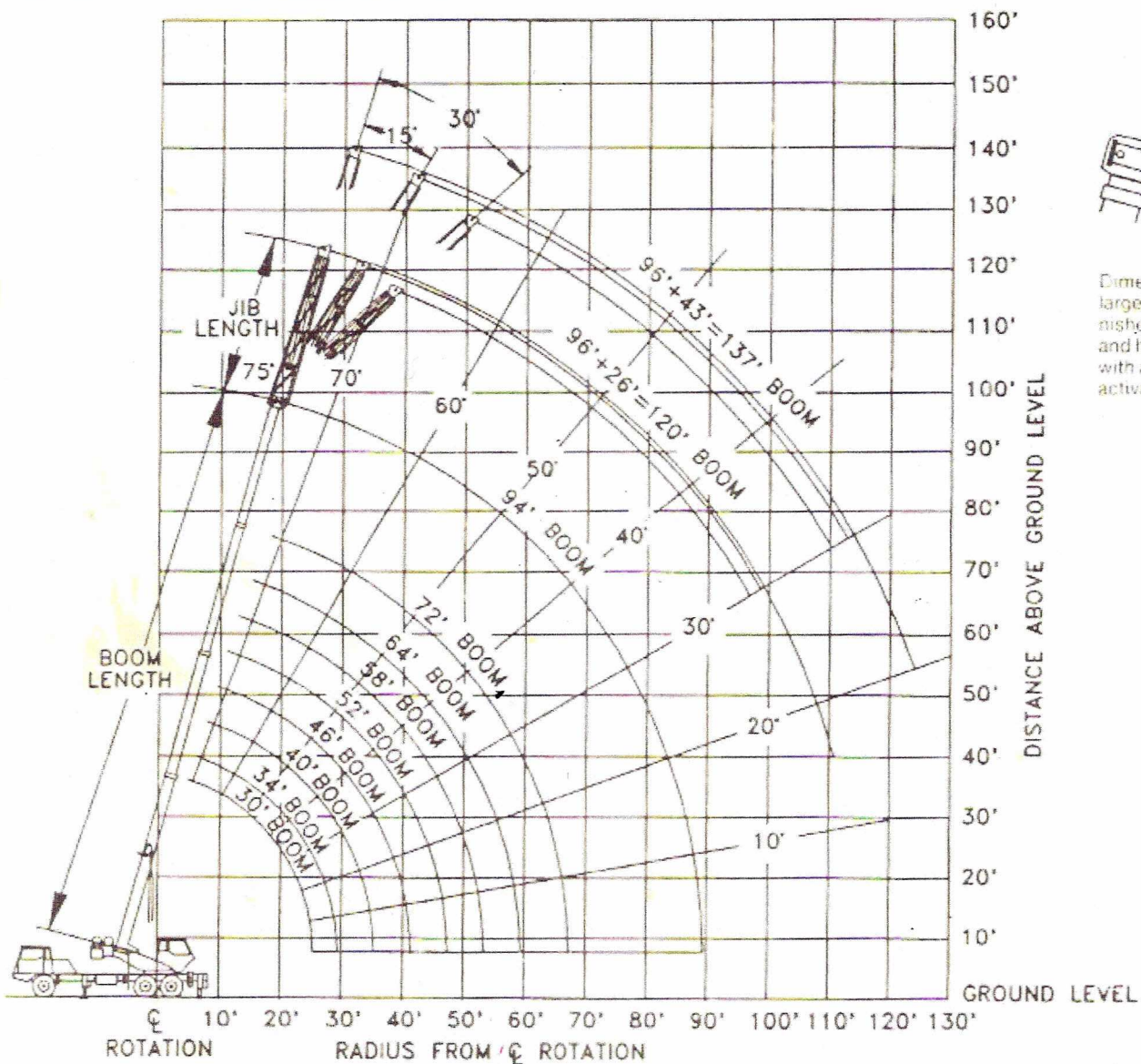
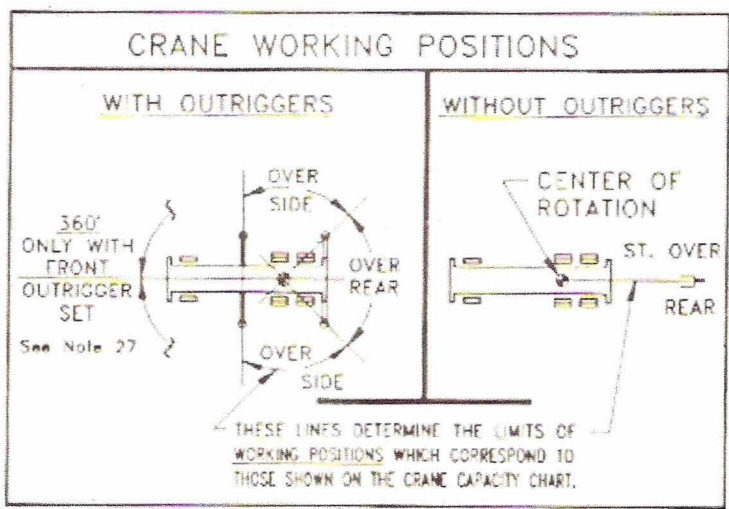


# Range Diagram (30'-94' boom)

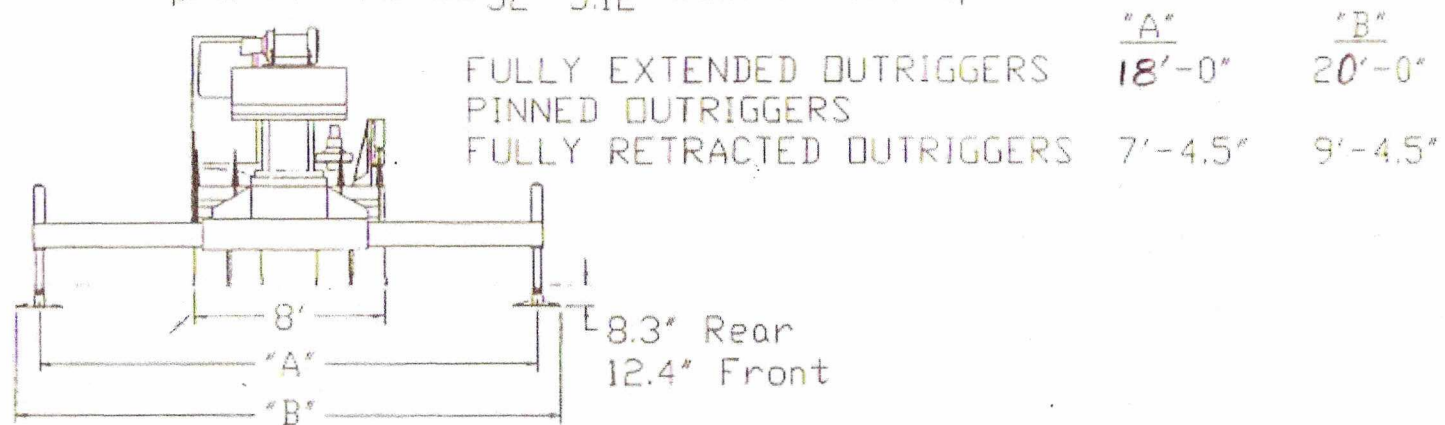
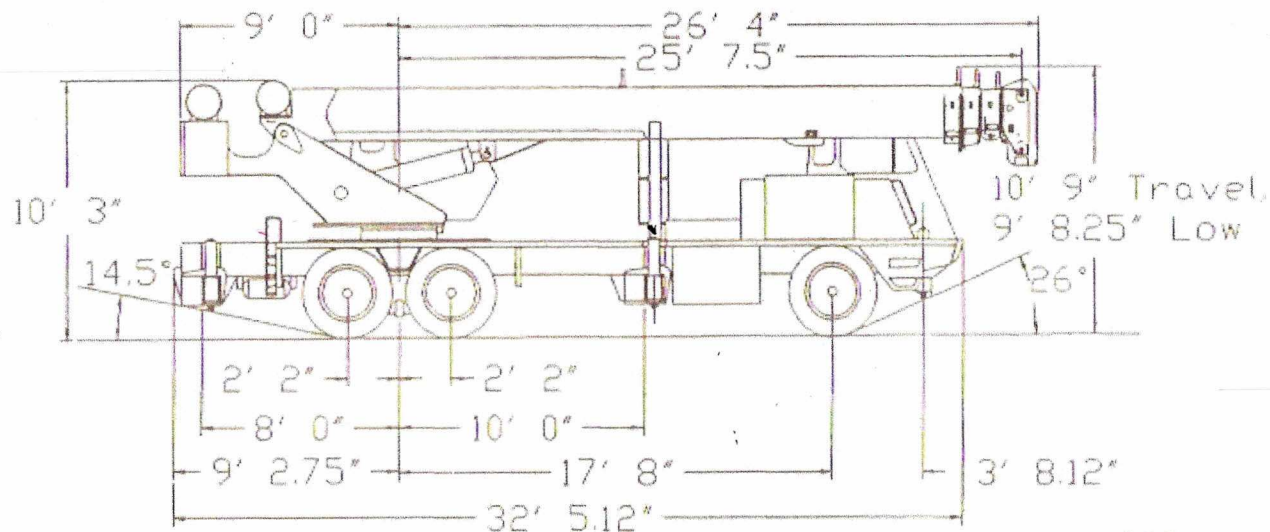


Dimensions are for largest Lorain furnished hook block and hook and ball with anti-two-block activated



WEIGHT - 54,000 lbs.  
 CLR PAOS - 254 in.<sup>2</sup> /ea.

# BASIC DIMENSIONS



# Capacity Charts — Pounds (30'-94' boom)

## MODEL MCH 230D

COUNTERWEIGHT  
UPPER STRUCTURE  
W/O AUX. WINCH 2500 LB.  
W/O AUX. WINCH 3600 LB.  
BOOM LENGTH 30' 94" H

OUTRIGGER SPREAD 18' H  
STABILITY PCT.  
ON OUTRIGGERS 85%  
ON TIRES 75%  
PCSA CLASS 10-66

**IMPORTANT:** This specification sheet is not to be used as load rating chart in the machine as data may be subject to change.

ON OUTRIGGERS																			
R A D I U S	BOOM LENGTH 30'		BOOM LENGTH 34'		BOOM LENGTH 40'		BOOM LENGTH 46'		BOOM LENGTH 52'		BOOM LENGTH 58'		BOOM LENGTH 64'		BOOM LENGTH 72'		BOOM LENGTH 94'(1)		
	REAR	SIDE	REAR	SIDE	REAR	SIDE	REAR	SIDE	REAR	SIDE	REAR	SIDE	REAR	SIDE	REAR	SIDE	REAR	SIDE	
10	55	46,100	46,000	58	46,000	46,000	72	46,000	46,000	77	44,500	44,500							10
12	61	44,800	44,800	65	43,500	43,500	69	41,400	41,400	77	39,900	39,900	75	38,800	38,800				12
15	54	35,100	35,100	55	35,200	35,200	64	35,400	35,400	68	34,600	34,600	71	33,400	33,400	73	32,500	32,500	15
20	40	24,600	24,600	47	24,800	24,800	56	25,000	25,000	67	25,100	25,100	65	25,200	25,200	68	25,500	25,500	20
25	18	18,200	17,500	33	18,500	17,300	46	18,700	17,700	53	18,800	17,900	59	18,900	18,100	63	19,000	18,100	25
30							34	14,500	12,000	45	14,600	12,300	52	14,700	12,500	57	14,800	12,500	30
35							11	11,500	8,500	34	11,600	8,900	45	11,700	9,000	51	11,800	9,100	35
40							18	9,300	6,400	35	9,400	6,600	44	9,500	6,700	50	9,600	6,800	40
45										22	7,800	4,800	35	7,700	5,000	43	7,800	5,100	45
50													27	6,300	3,600	36	6,400	3,800	50
55																25	5,200	2,800	55
60																31	4,300	2,100	60
65																21	3,500	1,400	65
70																			70
75																			75
80																			80
85																			85

(1) FOR BOOM LENGTHS LESS THAN MAXIMUM WITH THE PULLOUT 4TH SECTION EXTENDED, THE RATED LOADS ARE DETERMINED BY BOOM ANGLE ONLY IN THE 94 FL. BOOM LENGTH COLUMN. FOR BOOM ANGLES NOT SHOWN, USE THE CAPACITY OF THE NEXT LOWER BOOM ANGLE.

### ON TIRES STRAIGHT OVER REAR ONLY

R A D I U S	PICK & CARRY	R A D I U S
10	11,000	10
12	9,200	12
15	6,300	15
20	4,000	20
25	2,700	25
30	1,000	30

SIDE STOW JIB ON OUTRIGGERS																									
R A D I U S	26' OFFSET JIB																30' OFFSET								
	0' OFFSET		15' OFFSET		30' OFFSET		45' OFFSET		60' OFFSET		75' OFFSET		90' OFFSET		105' OFFSET		120' OFFSET		0' OFFSET						
	PULLOUT 4TH SECTION RET.	PULLOUT 4TH SECTION EXT.	PULLOUT 4TH SECTION RET.	PULLOUT 4TH SECTION EXT.	PULLOUT 4TH SECTION RET.	PULLOUT 4TH SECTION EXT.	PULLOUT 4TH SECTION RET.	PULLOUT 4TH SECTION EXT.	PULLOUT 4TH SECTION RET.	PULLOUT 4TH SECTION EXT.	PULLOUT 4TH SECTION RET.	PULLOUT 4TH SECTION EXT.	PULLOUT 4TH SECTION RET.	PULLOUT 4TH SECTION EXT.	PULLOUT 4TH SECTION RET.	PULLOUT 4TH SECTION EXT.	PULLOUT 4TH SECTION RET.	PULLOUT 4TH SECTION EXT.	PULLOUT 4TH SECTION RET.						
75	29.0	12,500	32.5	7,000	36.0	7,300	37.5	4,700	35.0	5,100	41.0	3,300	37.5	3,000	38.5	4,000	34.5	3,200	47.5	3,100	48.0	2,600	50.0	2,400	75
70	28.0	11,500	31.5	6,800	35.5	6,900	41.5	4,000	38.0	4,300	45.5	3,200	37.0	4,500	43.5	3,800	43.5	3,100	52.0	3,000	53.5	2,500	58.5	2,300	70
65	33.0	10,200	43.0	6,300	38.0	6,300	47.5	4,000	47.5	4,000	51.5	3,000	48.5	4,100	50.5	3,200	49.0	3,200	59.0	2,800	59.5	2,400	65.5	2,100	65
60	37.5	9,000	48.5	5,800	42.5	5,400	53.0	3,700	47.0	4,500	57.0	2,700	49.0	3,700	57.5	3,600	54.5	3,800	65.5	2,200	61.5	2,000	71.5	1,900	60
55	41.0	7,400	54.0	5,200	47.0	5,400	58.0	3,000	51.0	4,400	62.5	2,700	50.5	3,400	64.0	3,400	59.5	3,700	71.5	2,600	68.0	2,300	77.5	2,000	55
50	46.0	6,100	60.0	4,700	51.5	5,100	64.0	3,100	55.5	4,700	67.5	2,600	54.0	3,200	70.0	3,200	65.0	3,600	77.5	2,500	75.0	2,200	81.0	2,000	50
45	50.5	5,000	64.0	4,100	55.0	4,500	69.0	2,800	59.0	4,200	72.0	2,400	61.0	3,000	74.0	2,800	69.0	3,000	81.0	2,400	79.0	2,100	84.0	1,800	45
40	55.0	4,000	70.0	3,400	60.0	3,500	75.0	2,100	63.0	3,200	78.0	2,000	66.0	2,800	82.0	2,800	75.5	3,000	87.0	2,400	85.0	2,000	90.0	1,600	40
35	60.5	3,000	77.0	1,800	65.0	2,100	81.5	1,600	68.0	2,400	83.5	1,500	71.0	2,400	89.5	1,400	80.0	2,500	93.5	1,100	95.5	1,100	100.0	1,100	35
30	67.5	1,700	82.5	1,200	72.5	1,200	87.0	1,100	75.0	1,400	89.0	1,000	78.0	1,500	95.5	1,000	85.0	1,600	99.5	800	105.0	800	110.0	800	30
25	74.5	1,300			79.5	1,300			84.0	1,200			81.0	1,300			88.0	1,200			94.0	1,100			25
20	81.5	1,100			76.5	1,100			81.0	1,100			78.0	1,200			85.0	1,100			91.0	1,000			20

RECOMMENDED TIRE PRESSURE (PSI)			
TIRE SIZE	9.00X20, 10PR	10.00X20, 12PR	
LIFT ON TIRES	90	95	
LOADING	70	75	

#### Notes for Jib Capacities:

- F. For all boom lengths less than the maximum with a jib erected, the rated loads are determined by boom angle only in the appropriate column.
- G. For boom angles not shown, use the capacity of the next lower boom angle.
- H. Listed radii are for fully extended main boom only.

MAXIMUM PERMISSIBLE HOIST LINE LOAD								
LINE PARTS	1	2	3	4	5	6	7	8
MAX. LOAD	7,600	15,200	22,800	30,400	38,000	45,600	53,200	---
BOOM HEAD	2	2-0	2-3	1-2-0	1-2-3	1-2-3-0	1-2-3-4	---
HOOK BLOCK	0	2	2-0	1-2	1-2-0	1-2-3	1-2-3-0	---
WIRE ROPE: 6 X 19 OR 6 X 37 CLASS 26,500 LBS. MINIMUM BREAKING STRENGTH. 1/2" DIAMETER, K1 P.S., L.W.R.C., PREFORMED. 9/16" DIAMETER, U.P.S., L.W.R.C., PREFORMED. 5/8" DIAMETER, P.S., L.W.R.C., PREFORMED.								

#### Notes for On Tire Capacities:

- A. For Pick and Carry operation, boom must be centered over the rear of the crane with swing brake locked or with mechanical swing lock engaged, if crane is so equipped. Use minimum boom point height and keep load close to ground surface.
- B. The load should be restrained from swinging. No On Tires Operation With Jib Erected.
- C. Without outriggers, never maneuver the boom beyond listed load radii for applicable tires used to ensure stability.
- D. Creep speed is crane movement of less than 200 ft. (61 m) in a 30 minute period and not exceeding 1.0 mph (1.6 km/h).
- E. Refer to General Notes for additional information.

REDUCTION IN MAIN BOOM CAPACITY	
ALL JIBS IN STOWED POSITION	0 Lbs.
26'-43' OFFSET JIB STINGER RETRACTED	2,540 Lbs.
26'-43' OFFSET JIB STINGER EXTENDED	2,990 Lbs.
HOOK BLOCK WEIGHTS	
HOOK & BALL	121 Lbs.
HOOK BLOCK (2 SHEAVE)	330 Lbs.
HOOK BLOCK (3 SHEAVE)	360 Lbs.
HOOK BLOCK (4 SHEAVE)	427 Lbs.