



Maximum lift capacity: 16 t at 600 mm load center

Maximum lifting height: 9,70 m

Maximum reach: 5,10 m

Mercedes engine: 115 KW - 156 HP

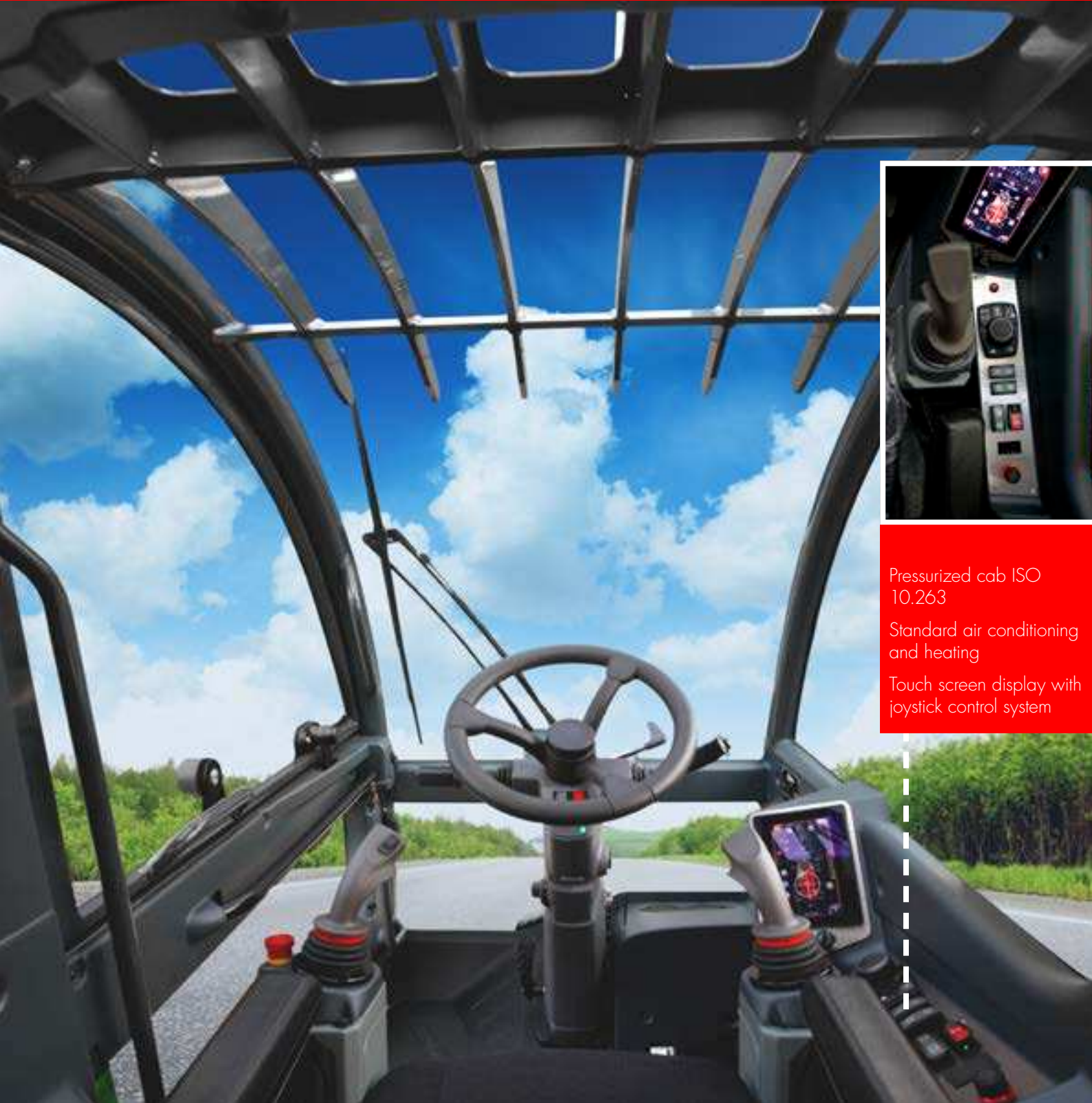
Electronically controlled hydrostatic transmission



HTH16.10

Courtesy of Crane.Market

Full visibility cab MAGNI patented design



Pressurized cab ISO 10.263

Standard air conditioning and heating

Touch screen display with joystick control system

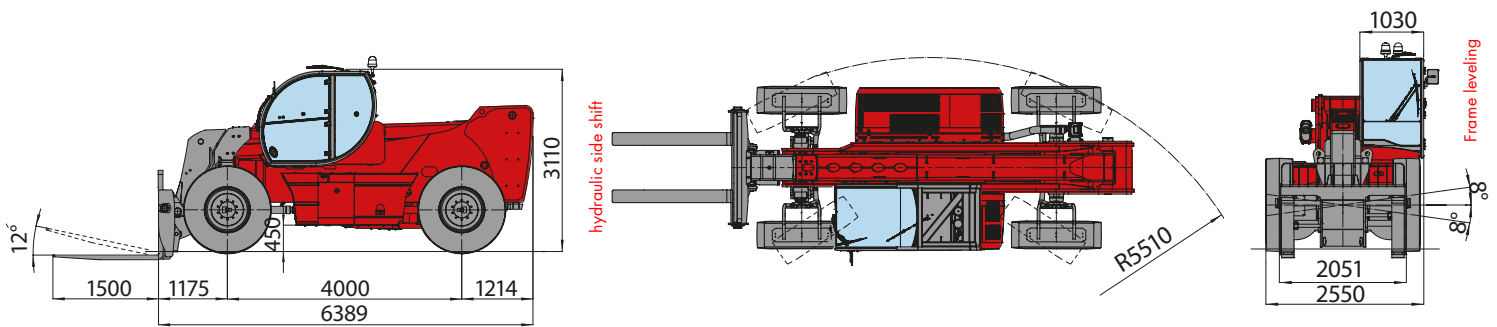


From the left:

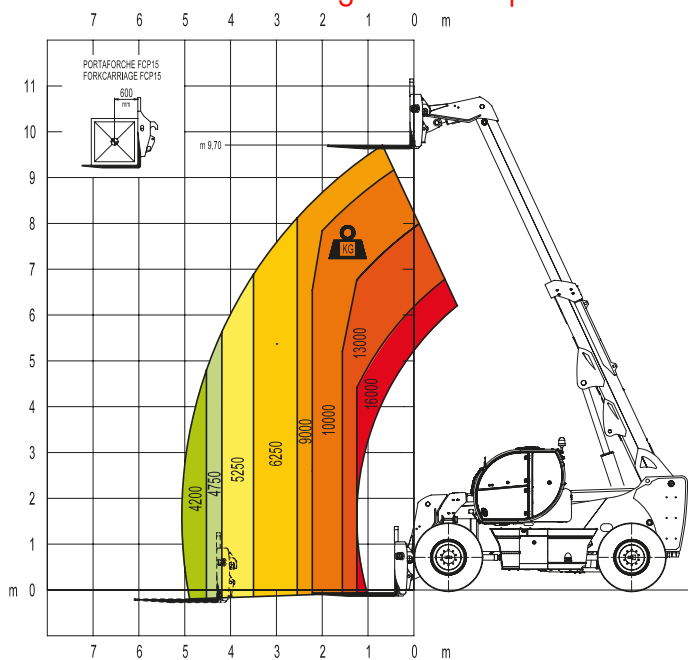
- Travelling mode screen
- Load Moment Indicator screen
- Air conditioning management screen

Courtesy of Crane.Market

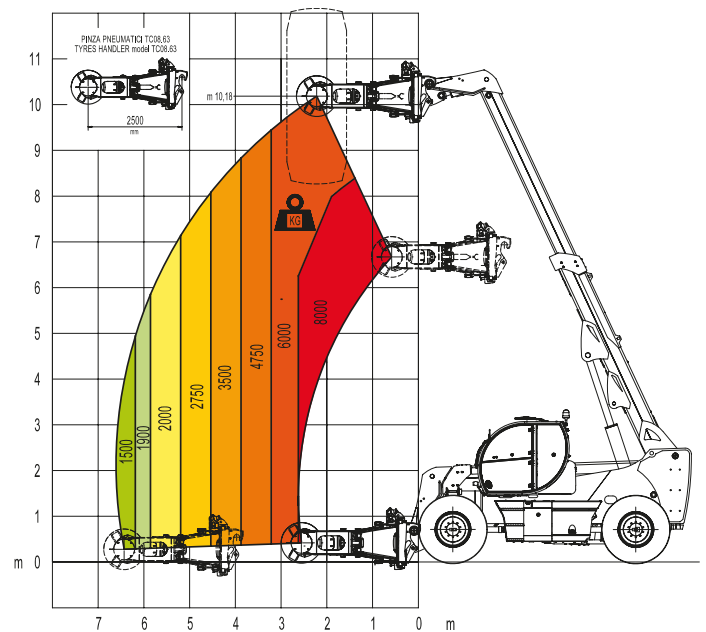
HTH16.10



Load chart forkcarriage with forks positioner



Load chart with wheels clamp



Clamp for wheels handling, with a capacity up to 16.000 kg from 24 to 63 inches .

- MAGNI patented quick fit of the attachment
- Attachments automatic recognition RFID system



LIFT CAPACITY	16.000 Kg at 600 mm load center
MAXIMUM REACH	5,10 m
CAB	FOPS-ROPS tested hermetic cab with protectors Front, rear and upper wiper Headlights for road circulation, flashing beacon Rear view mirrors Heating - Air conditioning
BRAKE SYSTEM	Hydraulic servo-assisted multisc brake in oil bath on both axles, with double circuit Negative parking brake
AXLES	Heavy Duty with 4-stage epicyclic reduction One steering cylinder each axle Levelling correction front axle at + 8° on the right and + 8° on the left 3 types of steering: - with front steering - with round steer - with crab steering Tilting rear axle
WEIGHTS	Total unladen: 20.200 kg Front axle unladen (boom retracted and lowered): 8.700 kg Rear axle unladen (boom retracted and lowered): 11.500 kg
HYDRAULIC CIRCUIT	Load sensing piston pump 60 cc 132 l/min Circuit at 350 bar Rexroth Proportional hydraulic distributor Suction and return line filters High pressure flexible hoses
TYRES DIMENSIONS	16.00 - R25 ** two each axle, driving and steering Goodyear EV-3+

The data in this brochure are informative and subject to change without notice