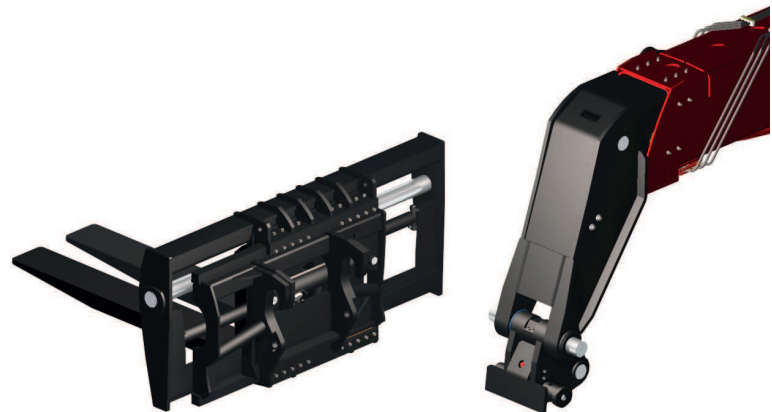
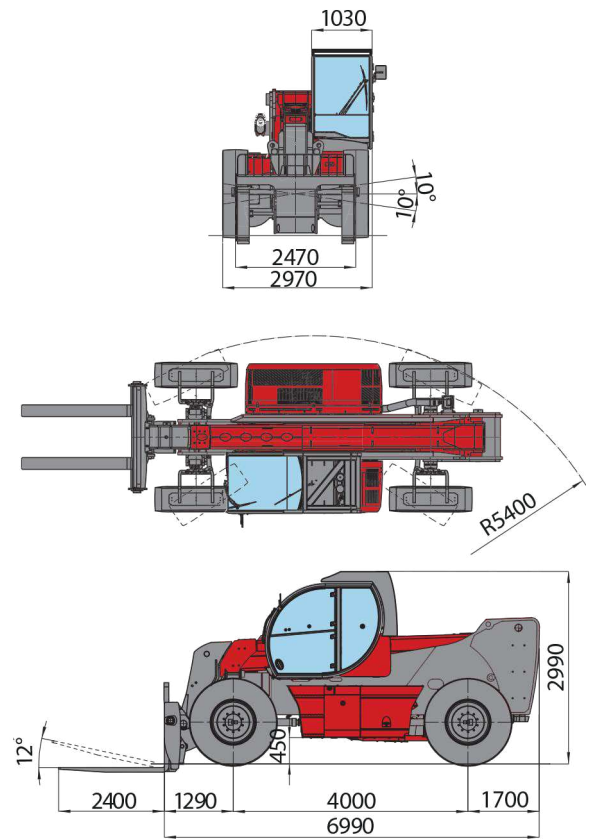
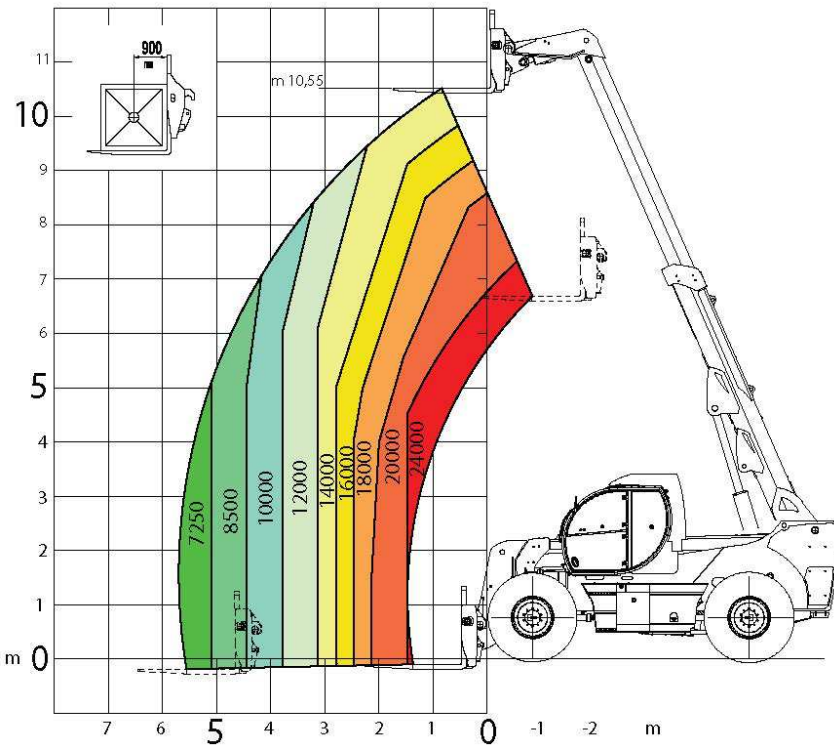


HTH24.11



Load chart fork carriage



Clamp for wheels handling, with a capacity up to 8.000 kg from 24 to 63 inches .

- MAGNI patented quick fit of the attachment
- Attachments automatic recognition RFID system



LIFT CAPACITY	24.000 Kg at 900 mm load center
MAXIMUM LIFTING HEIGHT	10,55 m
MAXIMUM REACH	5,65m
FORKS	Fork carriage 2.000 mm length Forks 250x100x2.400m
CAB	FOPS-ROPS tested hermetic cab with protectors Front, rear and upper wiper Headlights for road circulation, flashing beacon Rear view mirrors Heating - Air conditioning
CONTROLS	Multi-function electro proportional joystick
BRAKE SYSTEM	Hydraulic servo-assisted multidisc brake in oil bath on both axles, with double circuit Negative parking brake
ENGINE	Mercedes OM 934 LA.E4-1 Turbo intercooler 4 cylinders / 5.130 cm ³ Power 204 HP - 150 kW Max rpm = 2.200 Max torque 900 Nm from 1.200 to 1.600 rpm Electronic injection (single pump each injector) Liquid cooling system
AXLES	Heavy Duty with 4-stage epicyclic reduction One steering cylinder each axle Levelling correction front axle at + 10° on the right and +10° on the left 3 types of steering: - with front steering - with round steer - with crab steering Tilting rear axle
PERFORMANCE	Max. travel speed: 25 km/h Drawbar pull: 150 kN Gradeability: 34% Turning radius: 5.100 mm
WEIGHTS	Total without fork carriage: 29.300 kg Front axle unladen (boom retracted and lowered): 9.600 kg Rear axle unladen (boom retracted and lowered): 19.700 kg
TRANSMISSION	Rexroth hydrostatics Variable displacement hydrostatic pump 110 cc with electronic control One variable displacement hydrostatic motor 170 cc Hydraulic gearbox with 2 speeds forward / reverse
HYDRAULIC CIRCUIT	Load sensing piston pump 75 cc 165 l/min Circuit at 350 bar Rexroth Proportional hydraulic distributor Suction and return line filters High pressure flexible hoses
TANKS CAPACITIES	Engine oil = 16 l Colling liquid = 20 l Hydraulic oil tank = 210 l Fuel tank = 200 l
TYRES DIMENSIONS	18,00 - R25 two each axle, driving and steering
SAFETY	Electronic safety system which controls the load with definition of the lifted load, radius and comparison with the diagrams stored. Block of aggravating movements of the load. Safety valves on cylinders

The data in this brochure are informative and subject to change without notice