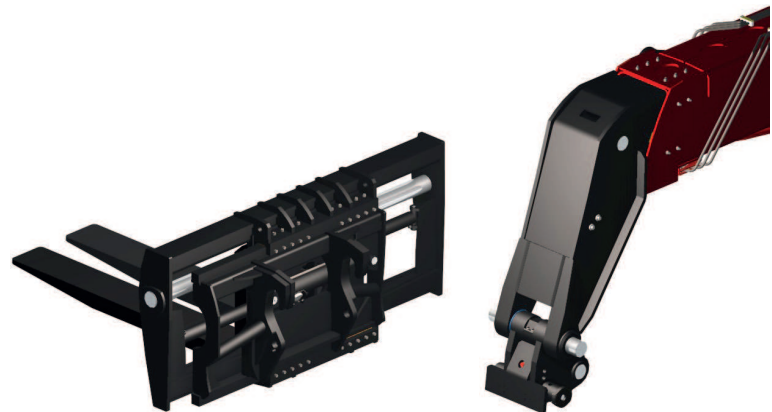
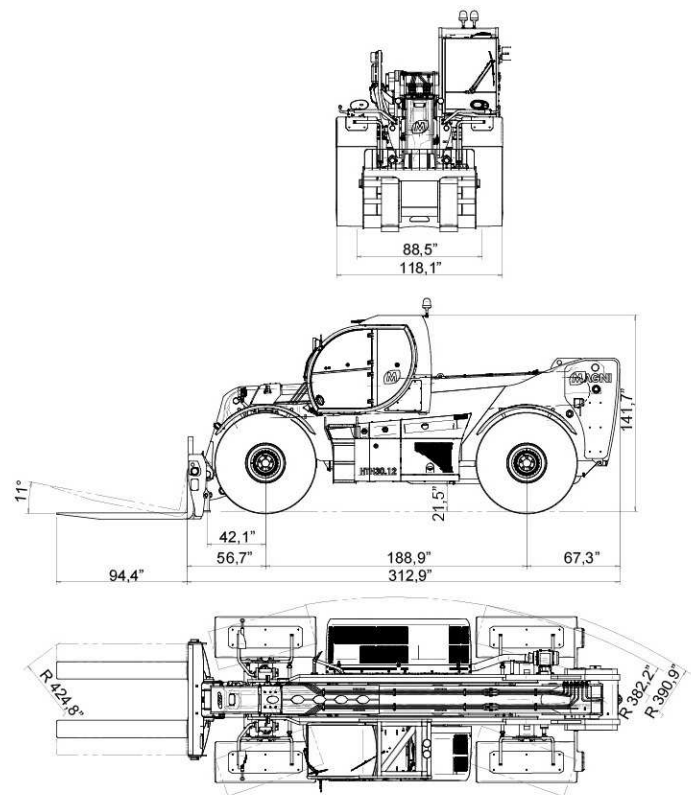
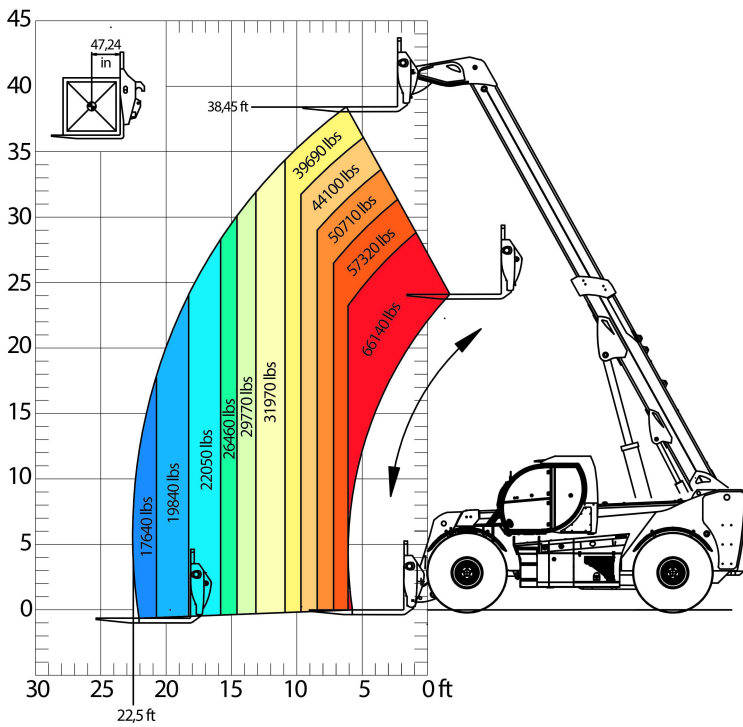




HTH30.12



Load chart fork carriage



Clamp for wheels handling, with a capacity up to 17.636 lbs from 24 to 63 inches .

- MAGNI patented quick fit of the attachment
- Attachments automatic recognition RFID system



LIFT CAPACITY	59.524 lbs at 47,2" load center	
MAXIMUM LIFTING HEIGHT	35,6 ft	
MAXIMUM REACH	21.6 ft	
FORKS	Fork carriage with forks positioner device 78,7 mm width Forks 11,81" x 4,52" x 94,48"	
CAB	FOPS-ROPS tested hermetic cab with protectors Front, rear and upper wiper Headlights for road circulation, flashing beacon Rear view mirrors Heating - Air conditioning	
CONTROLS	Multi-function electro proportional joystick	
BRAKE SYSTEM	Hydraulic servo-assisted multidisc brake in oil bath on both axles, with double circuit Negative parking brake	
ENGINE	Mercedes OM 936 LA.E4-1 Turbo intercooler 6 cylinders / 7.7 l Power 260 kW - 353 HP Max rpm = 2.200 Max torque 1.400 Nm from 1.200 to 1.600 rpm Electronic injection (single pump each injector) Liquid cooling system	Mercedes OM 926 LA.E3A/1 6 cylinders / 7.2 l Power 240 kW - 326 HP Max torque 1.300 Nm from 1.200 to 1.600 rpm
AXLES	Heavy Duty with 4-stage epicyclic reduction One steering cylinder each axle Levelling correction front axle at + 10° on the right and +10° on the left 3 types of steering: - with front steering - with round steer - with crab steering Tilting rear axle	
PERFORMANCE	Max. travel speed: 25 km/h Drawbar pull: 180 kN Gradeability: 30% Turning radius (end of fork): 424,8"	
WEIGHTS	Total without fork carriage: 90.169 lbs Front axle unladen (boom retracted and lowered): 41226 lbs Rear axle unladen (boom retracted and lowered): 48.942 lbs	
TRANSMISSION	Rexroth hydrostatics Variable displacement hydrostatic pump with electronic control One variable displacement hydrostatic motor Hydraulic gearbox with 2 speeds forward / reverse	
HYDRAULIC CIRCUIT	Load sensing piston pump Circuit at 350 bar Rexroth Proportional hydraulic distributor Suction and return line filters High pressure flexible hoses	
TANKS CAPACITIES	Engine oil = 29,5 l Colling liquid = 25 l Hydraulic oil tank = 310 l Fuel tank = 300 l	Engine oil = 16 l
TYRES DIMENSIONS	29,5 - R25 ** two each axle, driving and steering	
SAFETY	Electronic safety system which controls the load with definition of the lifted load, radius and comparison with the diagrams stored. Block of aggravating movements of the load. Safety valves on cylinders	

The data in this brochure are informative and subject to change without notice