

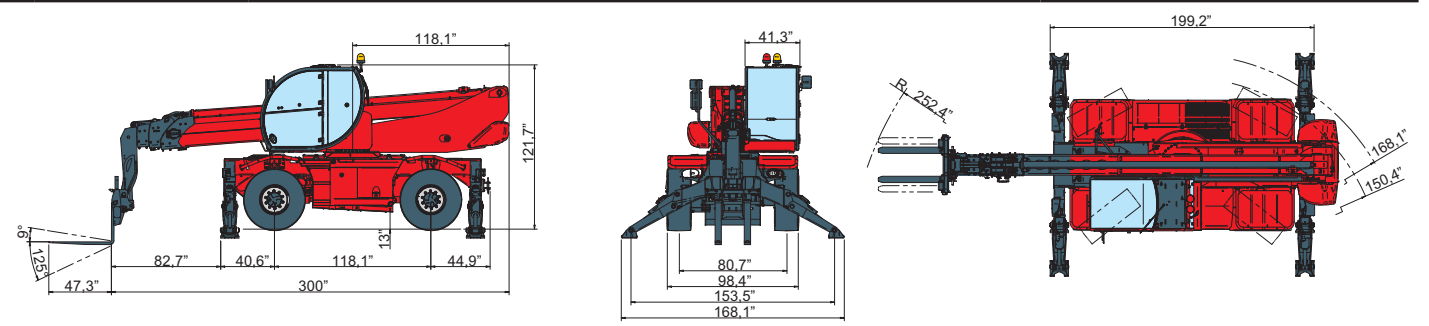
MACHINE MODEL	Rotating telescopic handler	RTH 5.25 Smart			
	Maximum lifting capacity	11.020 lbs (center of gravity 19,7 in)			
	Maximum lifting height	81 ft			
ENGINE - DEUTZ	Type	Deutz TCD 3.6 L4 Stage IV	Deutz TCD 3.6 L4 EDG - stage 3A compliant		
	Rated power	100 kW - 134 HP at 2.200 rpm	100 kW - 134 HP at 2.200 rpm		
	Maximum torque	500 Nm at 1.600 rpm	500 Nm at 1.600 rpm		
	Displacement	3,6 l	3,6 l		
	Cylinders	4 in line	4 in line		
	Fuel	Diesel direct injection turbocharged	Diesel direct injection turbocharged		
	Cooling system	Water — intercooler	Water — intercooler		
ENGINE - JCB	Type	JCB ECOMAX stage IV i	JCB DIESELMAX stage 3A		
	Rated power	93 kW - 126 HP to 2.200 rpm	97 kW - 131 HP to 2.200 rpm		
	Maximum torque	550 to 1.500 rpm	532 to 1.500 rpm		
	Displacement	4.399	4.399		
	Cylinders	4	4		
	Fuel	Diesel direct injection turbocharged	Diesel direct injection turbocharged		
Cooling system	Water — intercooler	Water — intercooler			
TRANSMISSION	Type	Hydrostatic			
	Model	Bosch — Rexroth			
	Maximum pressure	500 bar			
	Displacements	Variable displacement pump electronically controlled Variable displacement motor			
	Gear box	2 speeds forward-reverse			
AXLES AND BRAKES	Type	Axles with epicyclic reduction gear			
	Rear axle	Oscillating and steering with hydraulic locking			
	Front axle	Oscillating and steering with automatic levelling +/- 10°			
	Service brake	Hydraulically activated, oil-immersed multi-disc type on each axle			
	Parking brake	Hydraulic with negative action			
	Tyres dimensions	445/65 R 22,5			
	PERFORMANCE	Max. travel speed	25 Mph		
Drawbar pull		66 kN			
Gradeability		41%			
Turning radius (end of forks)		252,4 in			
WEIGHTS	Total unladen	37.985 lbs			
	Front axle unladen (boom retracted and lowered)	16.755 lbs			
	Rear axle unladen (boom retracted and lowered)	21.230 lbs			
TANK CAPACITIES		Deutz stage IV	Deutz stage3A	JCB stage IV i	JCB stage 3A
	Fuel tank	47 US gal	47 US gal	47 US gal	47 US gal
	AdBlue	3 US gal	n.a.	n.a.	n.a.
	Hydraulic oil tank	43,5 US gal	43,5 US gal	43,5 US gal	43,5 US gal
	Engine oil tank	2 US gal	2 US gal	4 US gal	4 US gal
Cooling liquid	6 US gal	6 US gal	6 US gal	6 US gal	
HYDRAULIC CIRCUIT	Max. operating system pressure	350 bar			
	Circuit type	Load sensing			
	Service pump	Bosch Rexroth — Variable displacement			
	Controls for boom and turret movements	Danfoss — Electroproportional valve SIL 2			
	Controls for stabilizers	Bosch Rexroth — Electro-hydraulics controls			
	Movements control	2 joystick Danfoss with two shafts with dead man safety device - Management with CAN bus technology			
CONFORMITY TO STANDARDS	EN 13849: concerning the safety of all controls of the machine EN 13000: concerning the standard of hydraulic cranes EN 280: concerning the standard of aerial platforms FOPS/ROPS 97/68/CE: concerning engine emissions standards				

The data in this brochure are informative and subject to change without notice



Maximum lifting height: 81 ft
 Maximum reach: 62,33 ft
 Electronically controlled hydrostatic transmission
 Automatic levelling device
 Pivoting stabilizers

tracce.com



REV05

RTH5.25 Smart

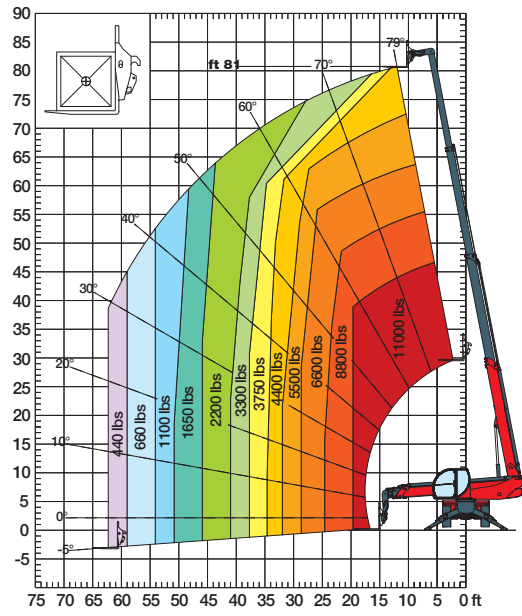
Magni Telescopic Handlers srl

Via Magellano, 22 - 41013 Castelfranco Emilia, Modena, Italia - Tel: +39 059 8630811 - Fax: +39 059 8638012

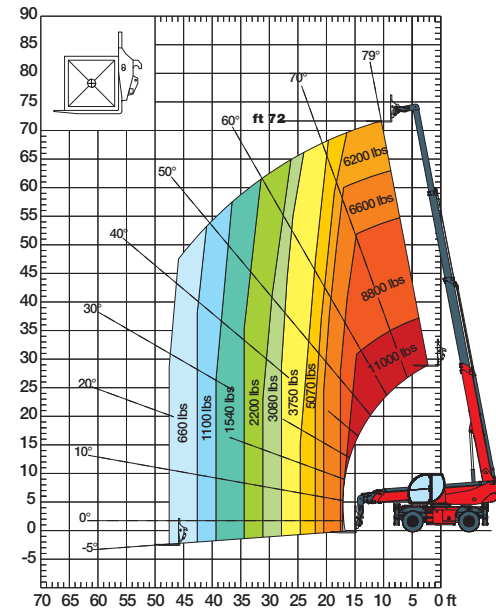
commerciale@magnith.com - www.magnith.com

Courtesy of Crane.Market

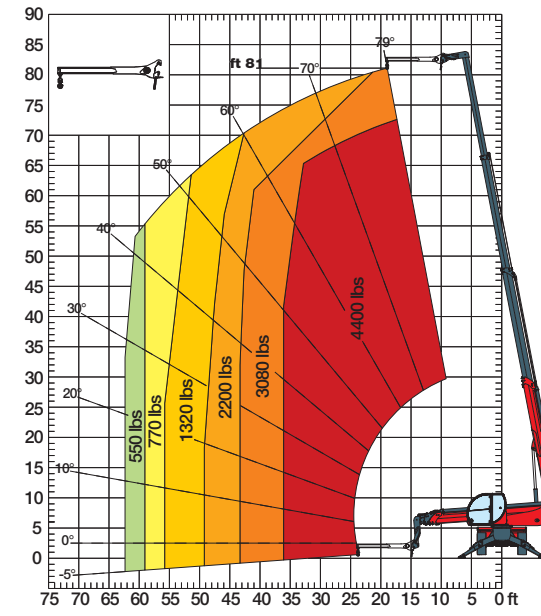
360° fully extended stabilizers load chart with forks



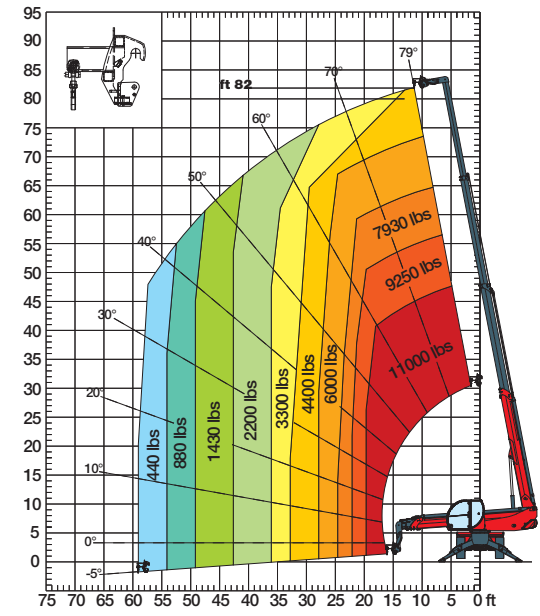
Frontal position load chart on tyres with forks



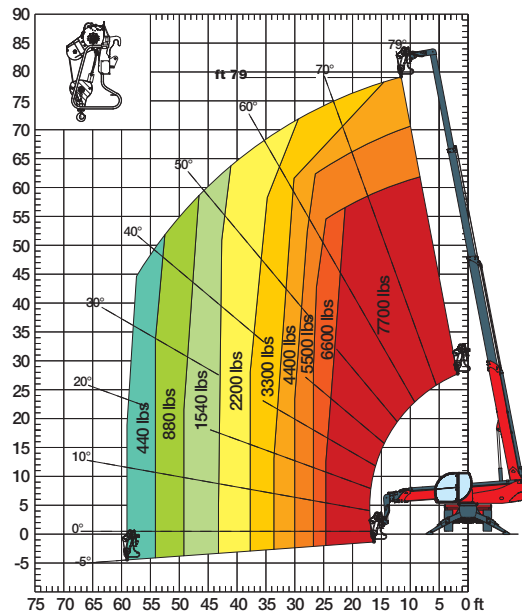
J 2000
Jib 4410 lbs



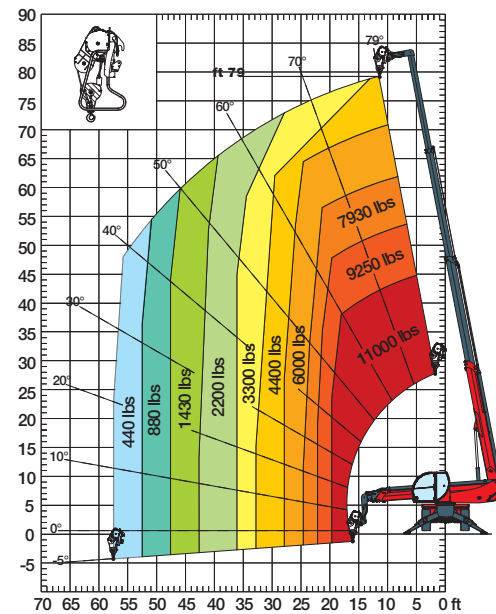
H 5
Hook 11020 lbs



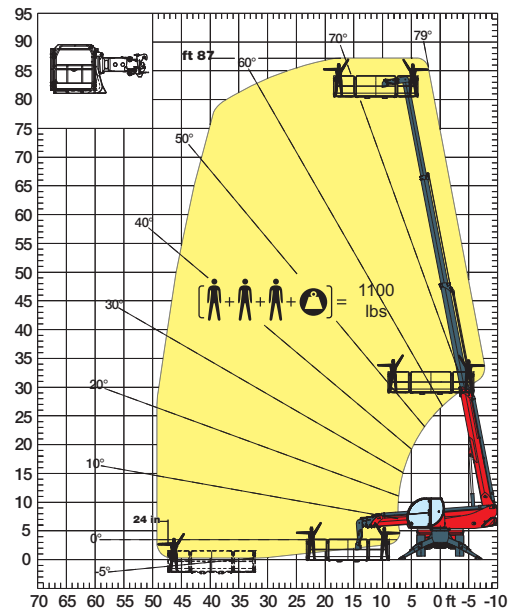
W 3,5
winch 7720 lbs



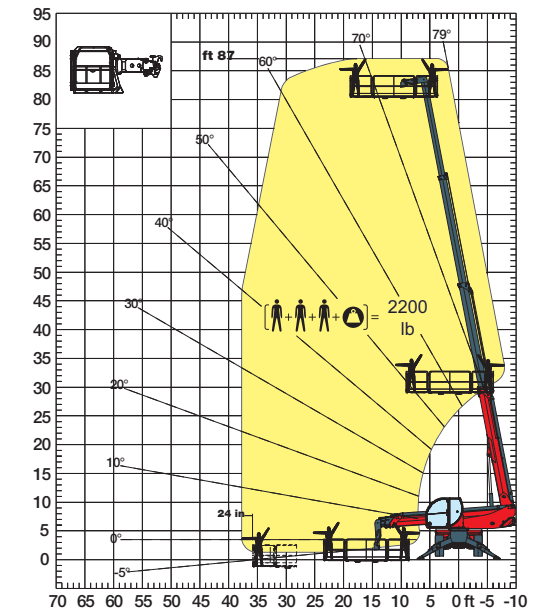
W 5
winch 11020 lbs



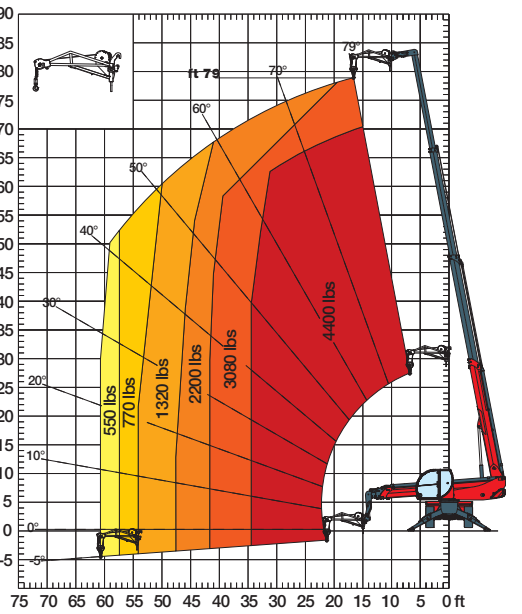
REP 2-4,5
Rotating extendable man platform 1100 lbs



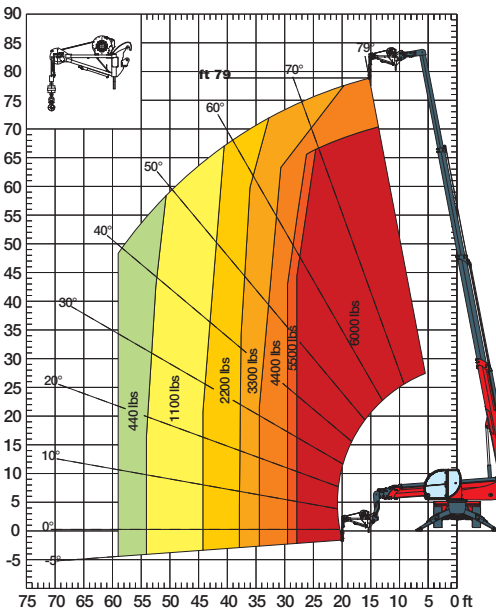
REP 10.2-4,7
Rotating extendable man platform 2200 lbs



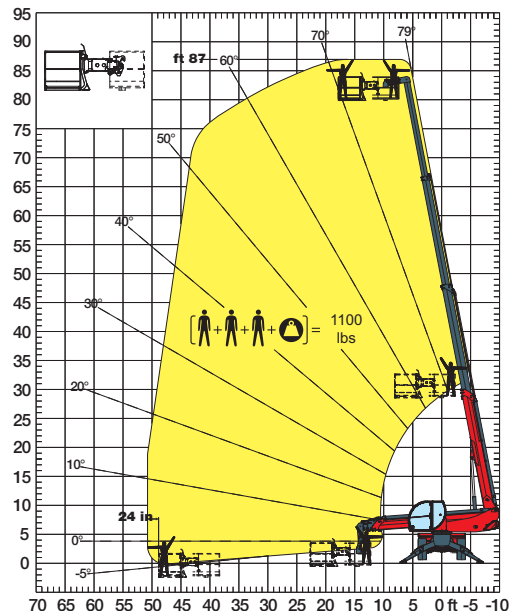
JW 2000
Jib winch 4400 lbs



JW 2700
Jib winch 6000 lbs



REP 2.2
Rotating extendable man platform 2200 lbs



REP 8.2-4,7 W0,3
Rotating platform 1780 lbs with winch 660 lbs

