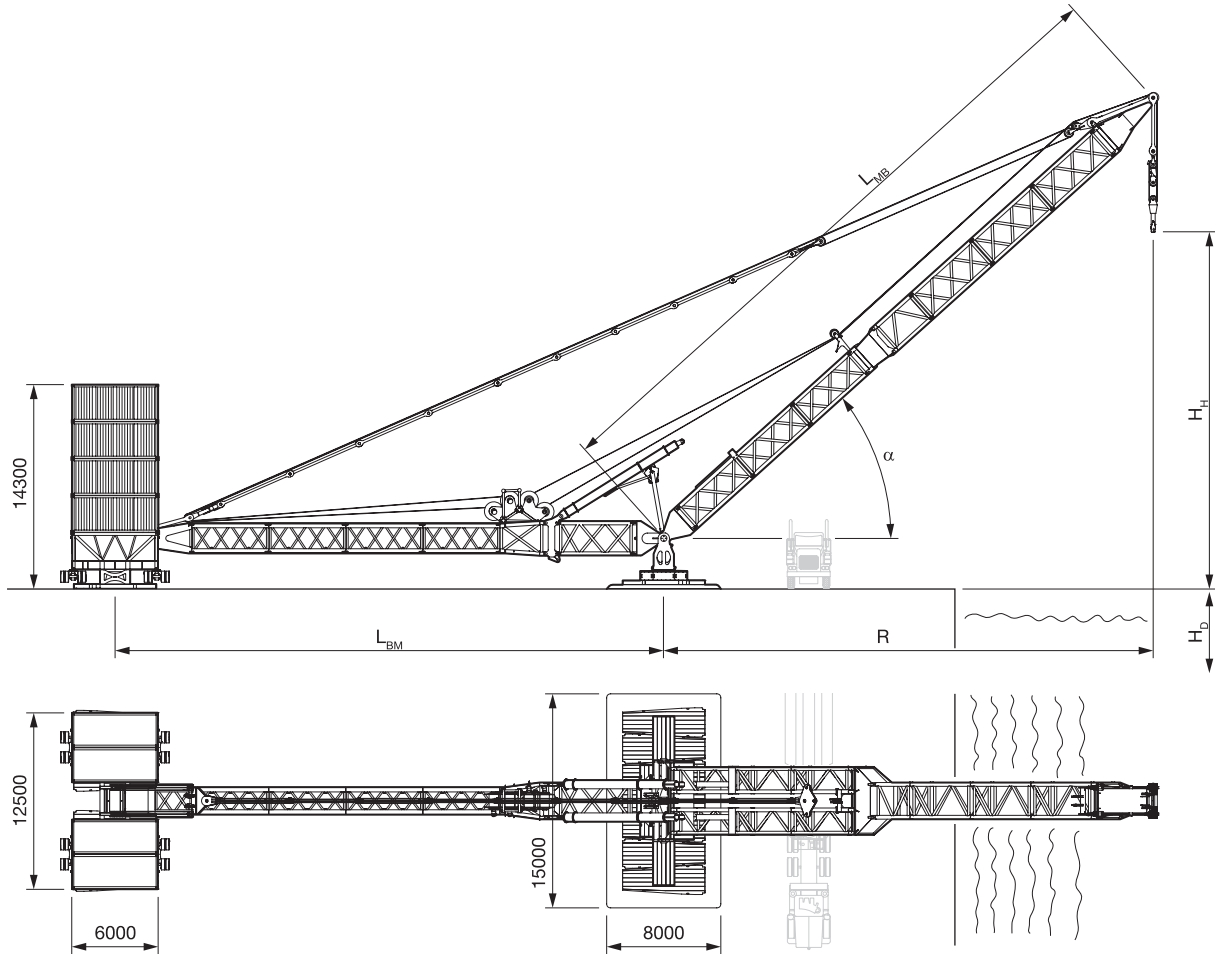


t = metric tons.
 The content in this document is mentioned for reference use only. Values may differ from current data. Always contact Mammoet for current project calculations.



Dimensions are in millimeters.

SPECIFICATIONS

	MTC 15 40-28-600	MTC 15 46-38-600	MTC 15-2 45-29-600	MTC 15-2 45-39-600
Max. lifting capacity	600 t	600 t	600 t	600 t
Radius (R)	6.3-36 m	7.1-41.1 m	6.8-41 m	6.8-41 m
Back mast length (L_{BM})	27.8 m	38.6 m	28.6 m	39.4 m
Main boom length (L_{MB})	40.5 m	46.2 m	45.2 m	45.2 m
Main boom angle (α)	27.1-82.5 °	27-82.5 °	26.1-82.6 °	26.1-82.6 °
Max. hoisting height (H_H)				
@ minimum radius	34.5 m	40 m	41.5 m	41.5 m
@ maximum radius	12.5 m	15 m	16 m	16 m
Max. hoisting depth (H_D)				
@ minimum radius	0 m	4.5 m	0 m	0 m
@ maximum radius	-23 m	-20 m	-26 m	-26 m
Max. ground bearing pressure ¹				
@ counterweight arrangement	8 t/m ²	8 t/m ²	13 t/m ²	13 t/m ²
@ base frame arrangement	17 t/m ²	17 t/m ²	18 t/m ²	18 t/m ²
No. of ballast containers	20	20	20	20
Max. weight of the ballast containers	520 t	520 t	502 t	502 t
Ballast material	Water or sand	Water or sand	Water or sand	Water or sand
Operational wind	≤ 12 m/s	≤ 12 m/s	≤ 12 m/s	≤ 12 m/s
Auxiliary crane	80 t mobile crane	80 t mobile crane	80 t mobile crane	80 t mobile crane

t = metric tons.

The content in this document is mentioned for reference use only. Values may differ from current data. Always contact Mammoet for current project calculations.

¹ Ground bearing pressure can be reduced with more load spreaders.