

Manitowoc 14000

Product Guide



Features

- 200 mton (220 ton) capacity
- 865 m-ton (6,267 ft-kips) Maximum Load Moment
- 89 m (292') Heavy-Lift Boom
- 98,4 m (323') Fixed Jib on Heavy-Lift Boom
- 113,8 m (373') Luffing Jib on Heavy-Lift Boom
- 253 kW (340 HP) engine

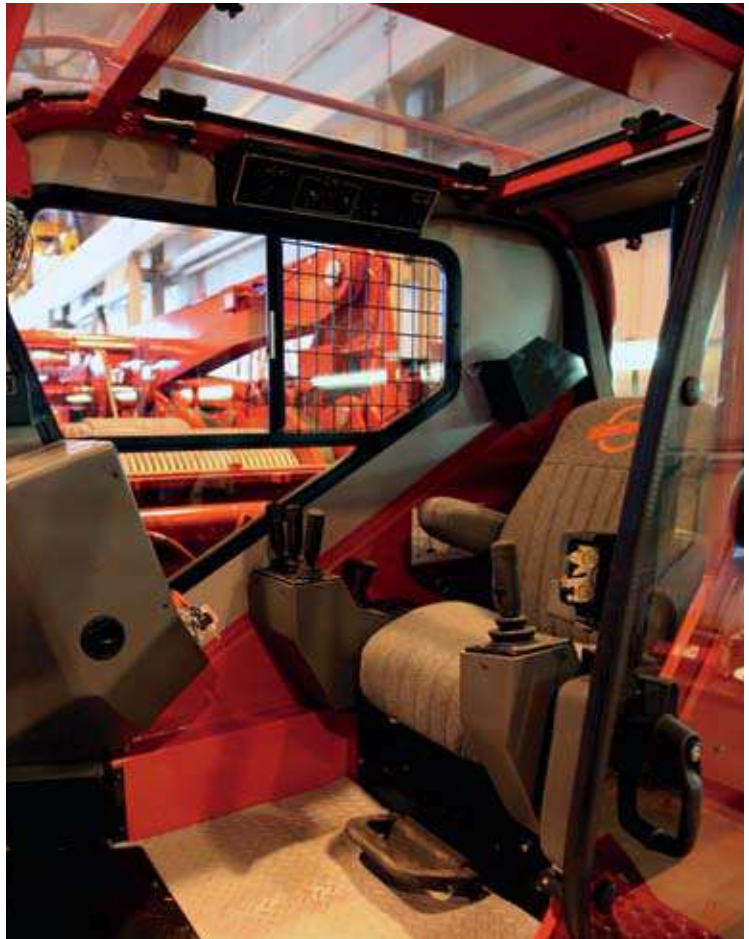
Features

EPIC®

Manitowoc's field-proven Electronically Processed Independent Controls (EPIC) system delivers high productivity and precise load control by instantly matching a crane's commands to the crane function. EPIC's microprocessor and sensors also maximize a Manitowoc crane's overall reliability and simplify servicing by pinpointing any problem in the crane's engine, power transmission or other operating systems. In addition, EPIC increases versatility by easily tailoring a Manitowoc crane's operation for specialized applications, with or without attachments. EPIC is a key reason no other crane can match the performance and reliability of Manitowoc.

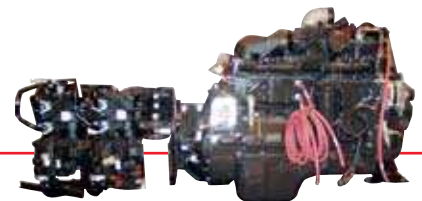
FACT™ Connectors

Manitowoc's patented Fast Aligning Connection Technology (FACT) automatically aligns crane components for fast, easy assembly.



Crawler Drive Shafts

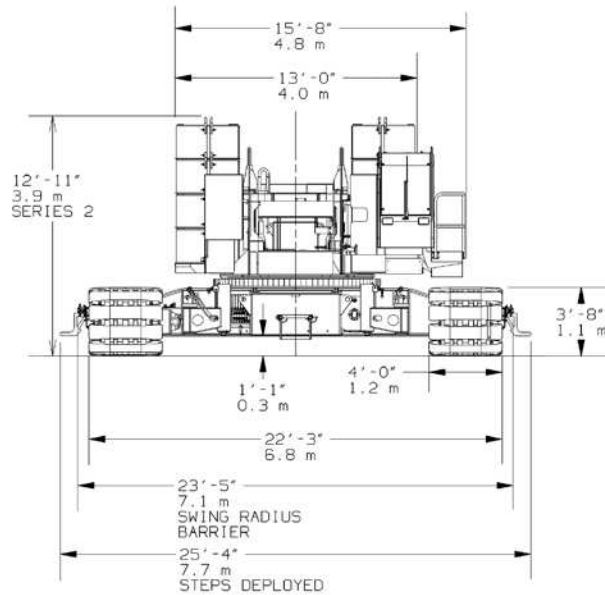
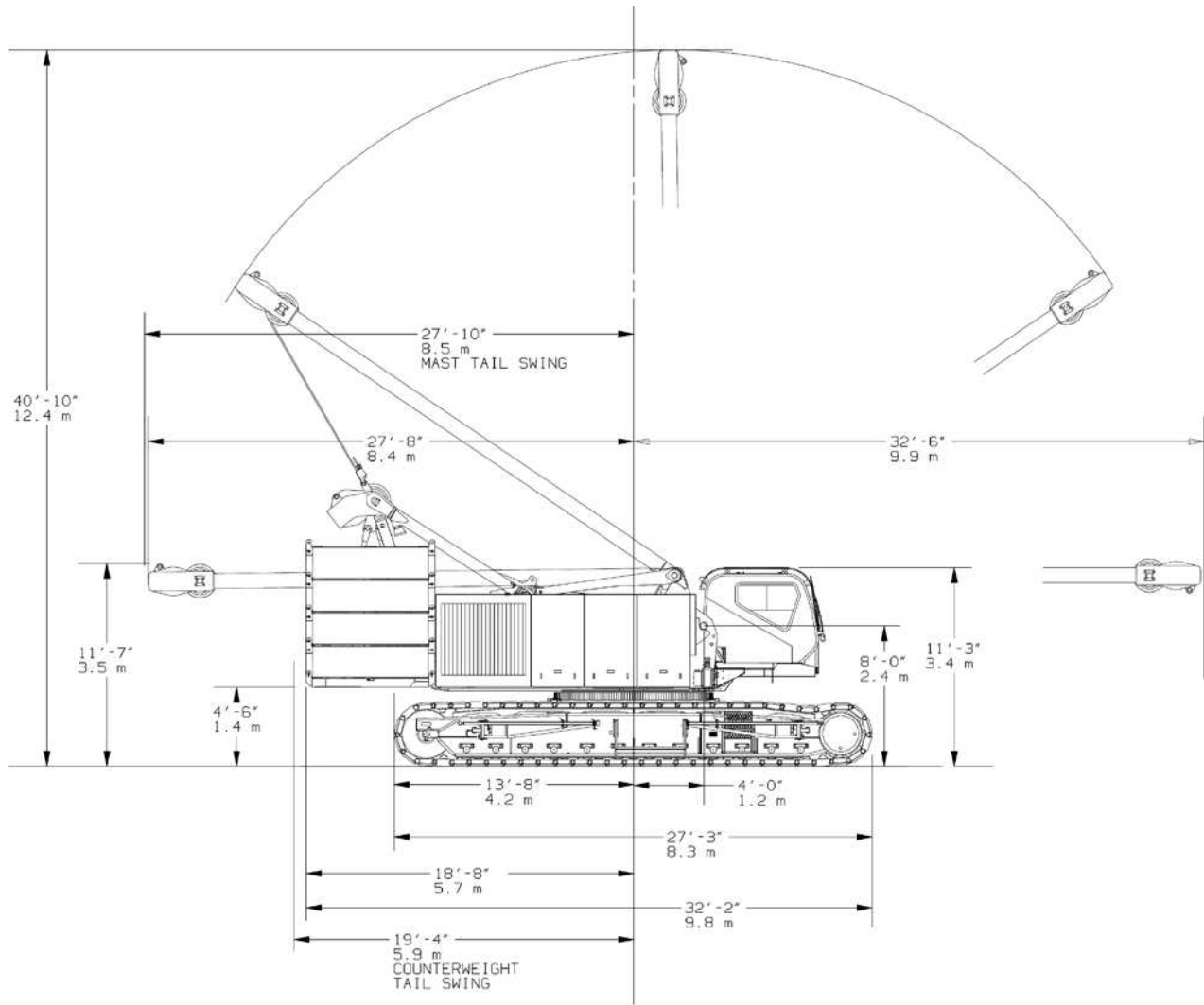
These eliminate the need to disconnect hydraulic systems for shipment—simplifying crawler removal and assembly.



Hydraulics

Our closed-loop system provides a separate hydraulic circuit to power each crane function. The result is truly independent, variable-speed operation of the swing, load hoist, boom hoist and travel functions.

Outline dimensions

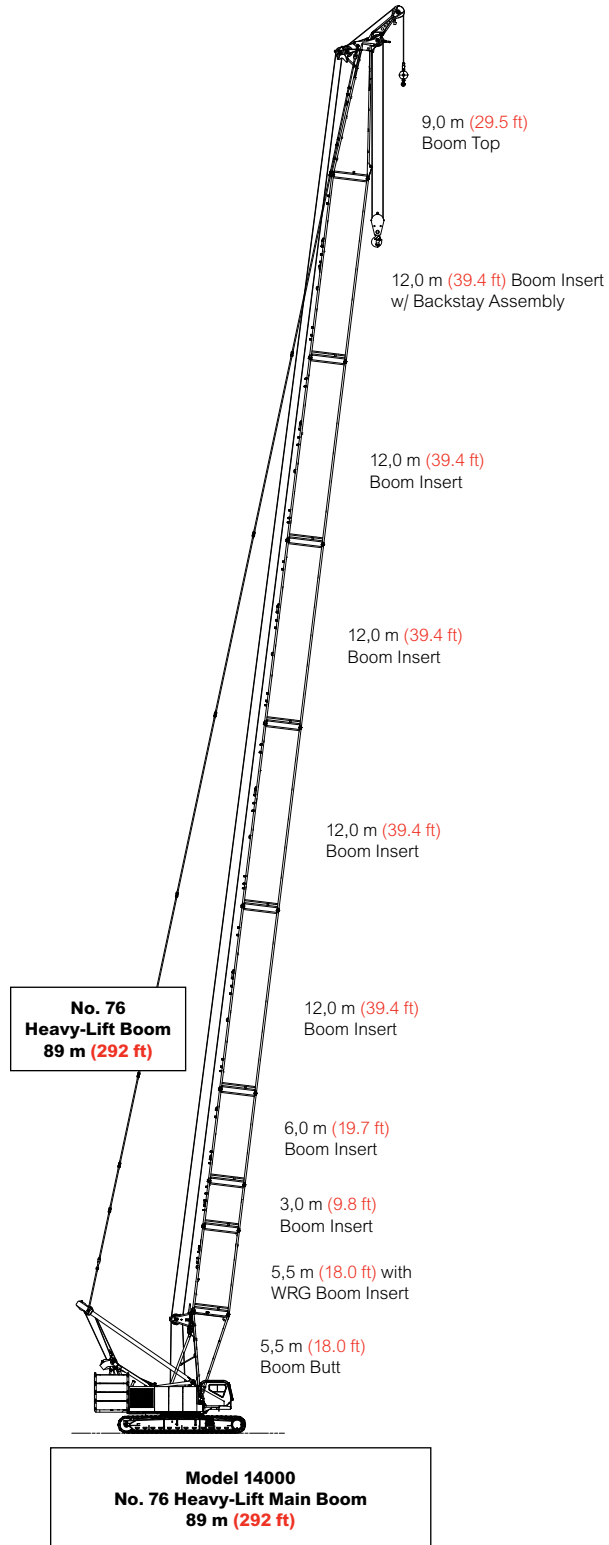


Boom combinations

ANSI B30.5

Boom Length m (ft)	Boom Inserts m (ft)			
	3,0 (9.8)	6,0 (9.7)	12,0 (39.4)	12,0* (39.4)
20 (65.6)	0	0	0	0
23 (75.5)	1	0	0	0
26 (85.3)	0	1	0	0
29 (95.1)	1	1	0	0
32 (105.0)	0	0	0	1
35 (114.8)	1	0	0	1
38 (124.7)	0	1	0	1
41 (134.5)	1	1	0	1
44 (144.4)	0	0	1	1
47 (154.2)	1	0	1	1
50 (164.0)	0	1	1	1
53 (173.9)	1	1	1	1
56 (183.7)	0	0	2	1
59 (193.6)	1	0	2	1
62 (203.4)	0	1	2	1
65 (213.3)	1	1	2	1
68 (223.1)	0	0	3	1
71 (233.0)	1	0	3	1
74 (242.8)	0	1	3	1
77 (252.6)	1	1	3	1
80 (262.5)	0	0	4	1
83 (272.3)	1	0	4	1
86 (282.2)	0	1	4	1
89 (292.0)	1	1	4	1

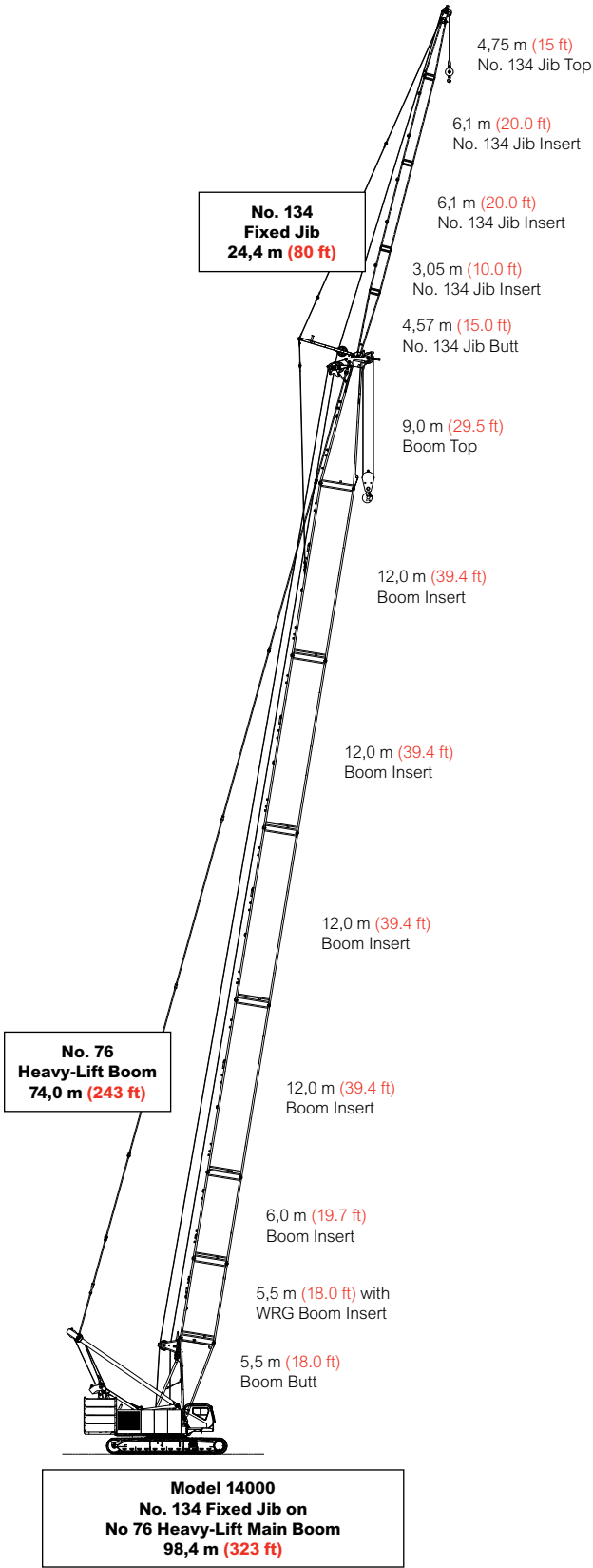
* with backstay assembly.



Boom combinations

ANSI B30.5

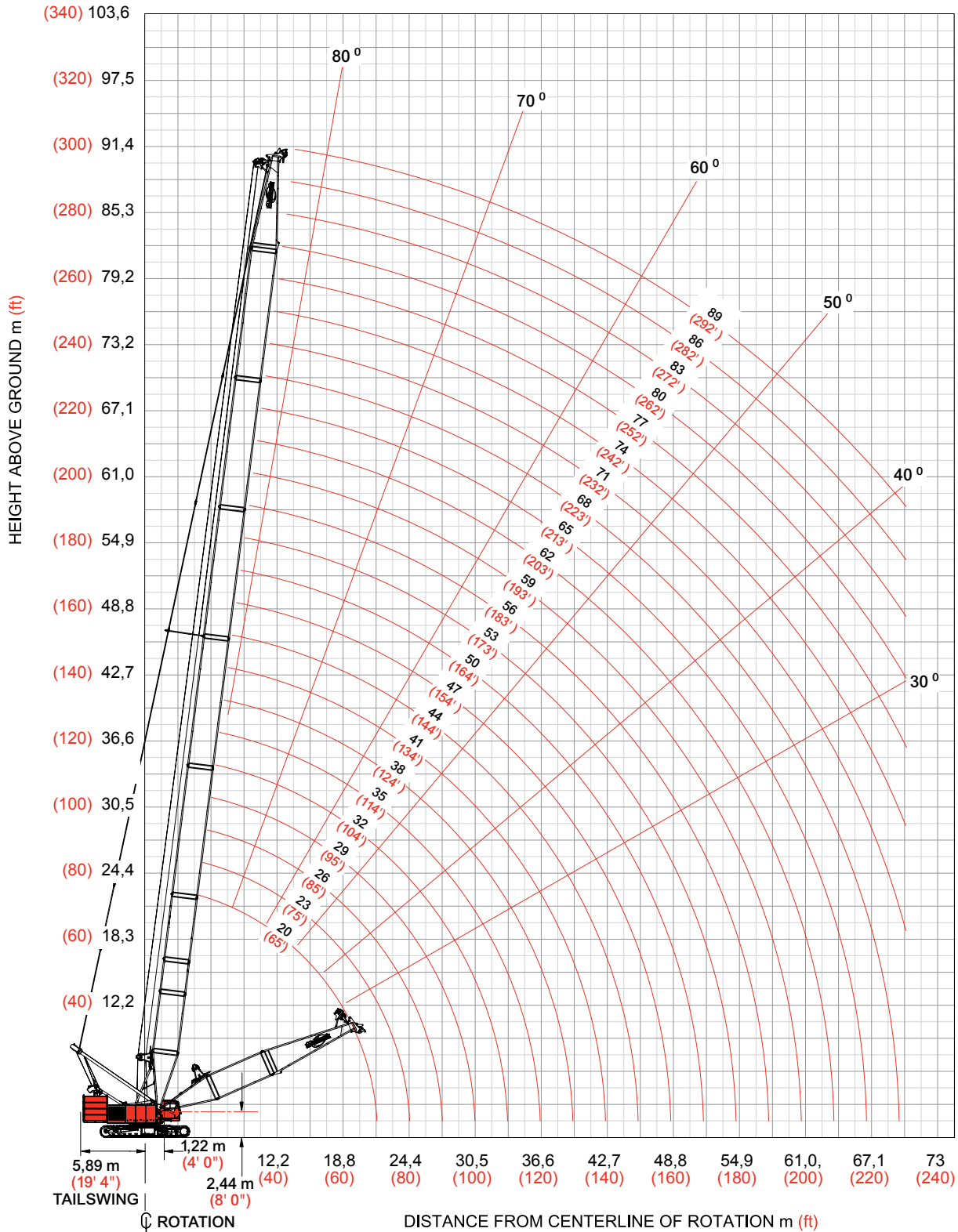
No. 134 Fixed Jib Combinations		
Fixed Jib Length m (ft)	Fixed Jib Inserts m (ft)	
	3,05 (10.0)	6,10 (20.0)
9,14 (30)	0	0
12,19 (40)	1	0
15,27 (50)	0	1
18,29 (60)	1	1
21,33 (70)	0	2
24,38 (80)	1	2



Heavy-lift boom range diagrams

ANSI B30.5

Liftcrane Boom Capacities - Model 14000 Series 2
No. 76 Heavy Lift Main Boom



Heavy-lift boom load charts

ANSI B30.5

Liftcrane Boom Capacities - Model 14000 Series 2 No. 76 Heavy Lift Main Boom

76 200 kg (168,000 lb) Counterweight 24 040 kg (53,000 lb) Carbody Counterweight

360° Rating

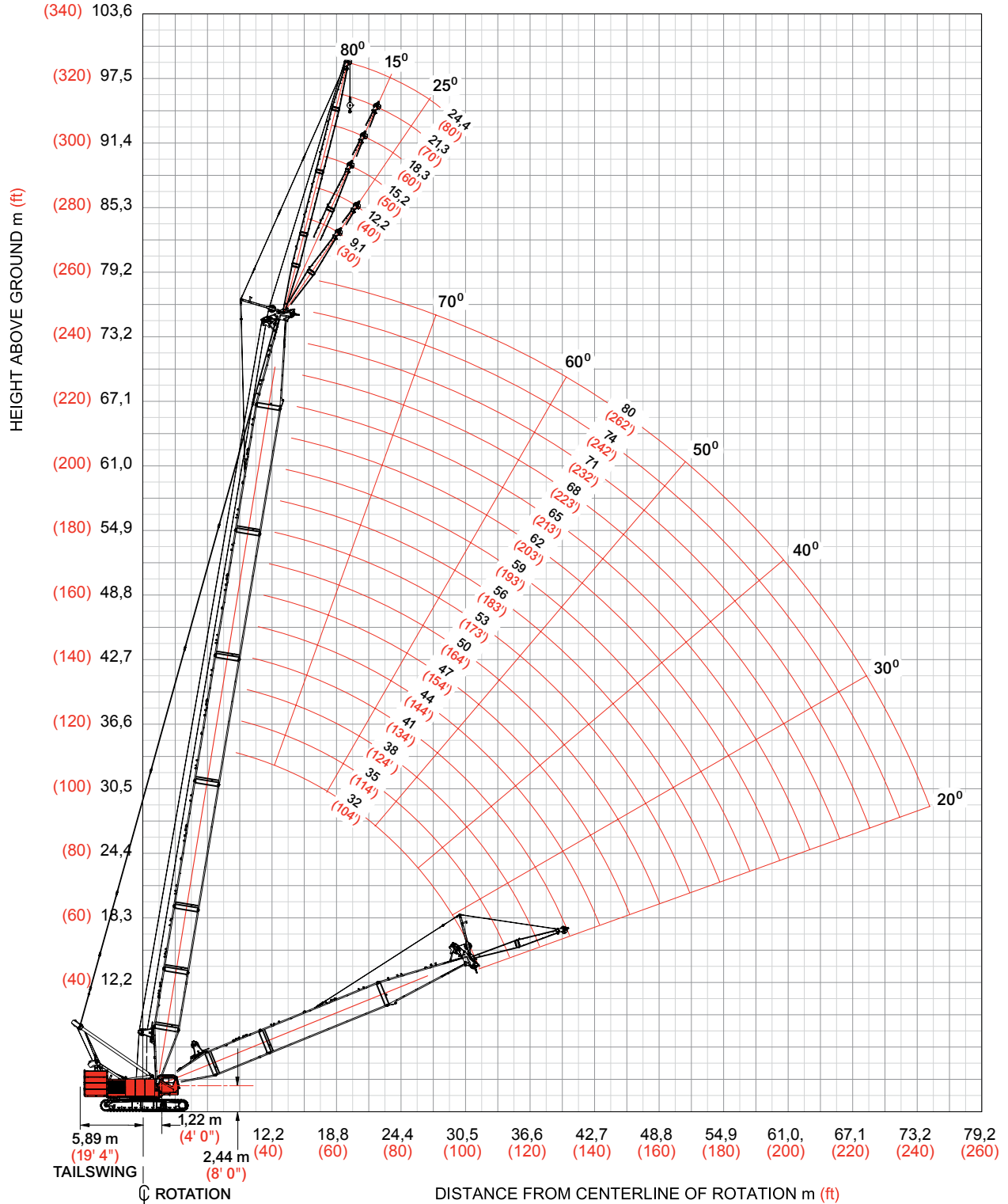
kg (lb) x 1 000

Boom m (ft)	20,0 (66)	26,0 (85)	32,0 (105)	38,0 (125)	44,0 (144)	50,0 (164)	56,0 (184)	62,0 (203)	68,0 (223)	74,0 (243)	80,0 (263)	86,0 (282)	89,0 (292)
Radius													
4,3 (14)	200,0 (441.0)												
8,0 (26)	109,3 (243.4)	109,0 (242.4)	108,7 (242.1)	108,5 (241.6)									
10,0 (32)	87,1 (198.0)	87,0 (197.5)	86,8 (196.9)	86,7 (196.5)	104,7 (195.7)	86,5 (195.0)	77,9 (173.4)	67,9 (150.4)					
12,0 (40)	67,0 (144.6)	67,1 (144.8)	67,1 (144.8)	67,1 (144.8)	86,4 (144.5)	66,9 (144.2)	66,8 (143.8)	65,4 (143.4)	58,8 (129.4)	50,2 (110.6)			
14,0 (46)	53,9 (118.8)	54,0 (119.0)	54,0 (118.9)	53,9 (118.8)	67,0 (118.4)	53,6 (118.0)	53,4 (117.6)	53,2 (117.2)	52,9 (116.5)	49,4 (109.0)	40,6 (9.5)	35,2 (77.6)	32,4 (71.5)
18,0 (60)	38,0 (82.2)	38,1 (82.4)	38,1 (82.3)	38,0 (82.2)	53,8 (81.7)	37,6 (81.3)	37,4 (80.7)	37,1 (80.2)	36,8 (79.4)	36,8 (79.5)	36,7 (78.9)	34,1 (75.0)	31,3 (69.0)
22,0 (70)		28,9 (66.6)	28,8 (66.5)	28,8 (66.4)	37,8 (65.8)	28,3 (65.4)	28,1 (64.8)	27,8 (64.3)	27,4 (63.4)	27,5 (63.5)	27,1 (62.8)	26,8 (62.1)	26,7 (61.8)
26,0 (85)			22,8 (50.6)	22,7 (50.4)	28,5 (49.9)	22,3 (49.5)	22,0 (48.8)	21,7 (48.2)	21,3 (47.4)	21,3 (47.4)	21,0 (46.7)	20,7 (46.0)	20,5 (45.6)
30,0 (100)			18,4 (39.8)	18,4 (39.7)	22,5 (39.2)	18,0 (38.8)	17,7 (38.1)	17,4 (37.5)	17,0 (36.6)	17,0 (36.6)	16,7 (35.9)	16,4 (35.2)	16,2 (34.8)
34,0 (110)				15,2 (34.3)	18,2 (33.8)	14,8 (33.4)	14,4 (32.7)	14,2 (32.2)	13,8 (31.3)	13,8 (31.2)	13,4 (30.5)	13,1 (29.8)	12,9 (29.4)
38,0 (120)					14,9 (29.4)	12,3 (29.0)	12,0 (28.3)	11,7 (27.7)	11,3 (26.8)	11,3 (26.8)	10,9 (26.0)	10,6 (25.3)	10,4 (24.9)
40,0 (130)					12,5 (25.7)	11,2 (25.3)	10,9 (24.6)	10,7 (24.1)	10,3 (23.2)	10,2 (23.1)	9,9 (22.3)	9,6 (21.6)	9,4 (21.2)
44,0 (140)					11,4 (22.5)	9,5 (22.2)	9,1 (21.5)	8,9 (20.9)	8,5 (20.0)	8,5 (20.0)	8,1 (19.2)	7,8 (18.5)	7,6 (18.1)
48,0 (155)						7,9 (18.2)	7,7 (17.6)	7,4 (17.0)	7,0 (16.1)	7,0 (16.1)	6,6 (15.3)	6,3 (14.6)	6,1 (14.2)
52,0 (170)							6,4 (14.4)	6,2 (13.8)	5,7 (12.9)	5,7 (12.9)	5,4 (12.1)	5,1 (11.4)	4,9 (11.0)
56,0 (180)								5,1 (12.0)	4,7 (11.1)	4,7 (11.1)	4,3 (10.3)	4,0 (9.6)	3,8 (9.2)
60,0 (195)								4,2 (9.6)	3,8 (8.7)	3,8 (8.7)	3,4 (7.9)	3,1 (7.2)	2,9 (6.8)
64,0 (210)									3,0 (6.7)	3,0 (6.7)	2,6 (5.9)	2,3 (5.2)	2,1 (4.8)
68,0 (220)										2,3 (5.5)	1,9 (4.7)		
70,0 (230)										2,0 (4.4)			

Fixed jib range diagram

ANSI B30.5

Liftcrane Boom Capacities
Fixed Jib Capacities - 134 Fixed Jib on No. 76 Main Boom



Fixed jib load charts

ANSI B30.5

Liftcrane Boom Capacities Fixed Jib Capacities - No. 134 Fixed Jib on No. 76 Main Boom

76 200 kg (168,000 lb) Counterweight 24 000 kg (53,000 lb) Carbody Counterweight
360° Rating kg (lb) x 1 000

		5° Offset				25° Offset				
Boom m (ft)		32,0 (105.0)	44,0 (144.4)	56,0 (183.7)	68,0 (223.1)	32,0 (105.0)	44,0 (144.4)	56,0 (183.7)	68,0 (223.1)	
Jib Length 18,3 m (60.0 ft)	Radius									
	9,1 (30)									
	12,0 (40)	17,2 (38.0)								
	16,0 (50)	16,1 (36,2)	16,5 (36,8)	16,5 (36,7)						
	22,0 (70)	14,5 (32,5)	15,3 (34,1)	15,5 (34,5)	15,3 (34,1)	11,1 (25,0)	12,0 (27,0)	12,6 (28,3)		
	28,0 (90)	13,2 (29,5)	14,1 (31,4)	14,6 (32,4)	14,6 (32,5)	9,4 (21,2)	10,4 (23,3)	11,1 (24,9)	11,8 (26,3)	
	36,0 (120)	11,7 (25,4)	12,8 (28,1)	13,4 (29,5)	13,1 (27,9)	7,9 (17,4)	8,9 (19,4)	9,6 (21,1)	10,3 (22,6)	
	48,0 (150)	8,6 (20,1)	9,0 (21,7)	8,2 (20,1)	7,4 (18,3)		7,4 (16,9)	8,1 (18,5)	8,3 (19,9)	
	56,0 (180)		6,7 (15,4)	5,9 (13,8)	5,1 (12,0)			6,4 (14,9)	5,8 (13,5)	
	64,0 (210)			4,2 (9,4)	3,4 (7,6)				3,9 (8,7)	
	70,0 (235)			3,1 (7,0)	2,4 (5,3)					
	76,0 (255)									

		5° Offset				25° Offset			
Boom m (ft)		32,0 (105.0)	44,0 (144.4)	56,0 (183.7)	68,0 (223.1)	32,0 (105.0)	44,0 (144.4)	56,0 (183.7)	68,0 (223.1)
Jib Length 24,4 m (80.0 ft)	Radius								
	9,1 (30)								
	12,0 (40)	— (23,4)							
	16,0 (50)	10,2 (22,7)	10,1 (22,6)	9,9 (22,0)					
	22,0 (70)	9,4 (21,1)	9,5 (21,3)	9,5 (21,2)	9,3 (20,7)	8,9 (19,8)			
	28,0 (90)	8,8 (19,6)	8,9 (19,9)	9,0 (20,0)	8,9 (19,8)	7,5 (16,9)	8,2 (18,5)	8,6 (19,2)	8,7 (19,3)
	36,0 (120)	8,1 (17,8)	8,2 (18,2)	8,4 (18,4)	8,3 (18,4)	6,1 (13,5)	6,8 (15,0)	7,4 (16,3)	7,9 (17,4)
	48,0 (150)	6,8 (15,5)	7,4 (16,8)	7,5 (17,0)	7,5 (17,1)	4,9 (11,2)	5,5 (12,7)	6,1 (14,0)	6,6 (15,1)
	56,0 (180)	— (13,3)	6,8 (15,4)	6,1 (14,2)	5,3 (12,4)		4,9 (11,1)	5,4 (12,3)	5,9 (13,3)
	64,0 (210)		5,2 (11,5)	4,4 (9,8)	3,6 (8,0)			4,9 (10,9)	4,2 (9,4)
	70,0 (235)			3,4 (7,5)	2,6 (5,7)				3,1 (6,3)
	76,0 (255)			2,5 (5,6)					2,1 (4,2)

Notes