

ROTO

TECHNICAL DATA



BUILDING WITH CONFIDENCE.

ROTO ALL OVER THE WORLD

10 CAB

- Compliant with **FOPS Level 2 (ISO 3449)**
- **995 mm** interior width, **4.3 m²** of glass surface
- The cab **can be hydraulically tilted** through up to **18 degrees**
- **Opening windscreen** and **rear window**
- **Pneumatic suspension seat**⁽⁶⁾
- Electro-mechanical or fully electronic **joystick**⁽⁶⁾
- The **steering wheel tilt** can be **adjusted** up to **16 degrees**

11 ENGINE

- **Power up to 74.5 kW** (101 HP), **88 kW** (120 HP), **107 kW** (145 HP) and **129 kW** (175 HP)
- **Easy access** and safe servicing
- **Manual battery isolator**

9 HYDROPNEUMATIC SUSPENSION

- The **active suspension system** ensures the best possible exploitation of the telehandler's performance
- **Automatic suspension mode** ideal for off-road driving and short transits on-road, assuring **excellent vehicle stability at up to 40 kph**
- Selecting the **manual suspension setting** allows the operator to continuously change both the side tilt and the longitudinal tilt for the **full efficiency during the lifting on tyres**

ROTO	50.10 S	38.14 38.14 S	38.16 38.16 S	45.19	45.21	50.16 MCSS	45.19 MCSS	45.21 MCSS	60.24 MCSS	40.26 MCSS	40.30 MCSS
Maximum load capacity (kg)	5000	3800	3800	4500	4500	5000	4500	4500 ⁽¹⁾	6000	4000	6000
Maximum lift height (m)	10.4	13.9	15.7	18.7	20.8	16.4	18.7	20.8 ⁽¹⁾	23.9	26	29.5
Turbocharged engine (make/cylinder)	Perkins/4			Deutz/4		Iveco/6					
Tier 3 engine power (kW/HP)	74.5/101			88/120		107/145		129/175		107/145	129/175
Maximum speed (kph)	40	40 ⁽²⁾	40 ⁽²⁾	25	25	40	40	40	40	40	40
Turret rotation (degrees)	415 ^(3a)			600 ^(3b)		Continuous					
Load-Sensing hydraulic system (bar-l/min)	210-108			240-115		240-108			240-124	240-108	240-124
Hydraulically controlled stabilizers	● ⁽⁴⁾	● ⁽⁴⁾	● ⁽⁴⁾	● ⁽⁴⁾	● ⁽⁴⁾	●	●	●	● ⁽⁴⁾	●	● ⁽⁴⁾
Hydropneumatic suspensions	●	● ⁽⁵⁾	● ⁽⁵⁾	-	-	●	●	●	●	●	●
Cab compliant with FOPS standards	●	●	●	●	●	●	●	●	●	●	●
Merlin electronic control system	-	-	-	-	-	●	●	●	●	●	●
Tilting cab	-	-	-	-	-	-	-	-	●	●	●
Tac-Lock attachment coupling	● ⁽⁷⁾	● ⁽⁸⁾	● ⁽⁸⁾	● ⁽⁶⁾	● ⁽⁶⁾	● ⁽⁷⁾	● ⁽⁸⁾	● ⁽⁸⁾	● ⁽⁷⁾	● ⁽⁶⁾	● ⁽⁶⁾
Auxiliary boom hydraulic service	●	●	●	●	●	●	●	●	●	●	●

Performance figures refer to the machine equipped with forks, operating on stabilizers.

(1) Tower-Jib version with maximum lift capacity of 800 kg and maximum lift height of 31.7 m;

(2) S version only. The basic model features 25 kph maximum speed; (3a) ±208° (3b) ±300° with reference to the longitudinal axis of the machine;

(4) Stabilising and levelling can be performed automatically; (5) S version only. The basic model has no hydropneumatic suspension;

(6) ZM2 version front tool holder; (7) ZM3 version front tool holder; (8) Optional endowments on some models.

● Standard. ○ Optional.

1 SLEWING TURRET

- **Rotation on 360 degrees**, in continuous on the models with great performances
- The **cab working lights** allow an **excellent visibility**, which is vital both during turret slewing and while manoeuvring on sit

2 TELESCOPIC BOOM

- Lifting capacities up to **6000 kg**
- Operational heights to **over 30 meters**
- **Hydraulic** and **electric** cables **housed inside the boom** for ensuring maximum protection and reliability
- Front tool-holder carriage with **Tac-Lock** hydraulic locking system

3 CHASSIS

- Main chassis surrounded by a **70 mm diameter solid ring of steel**
- **Increased stability** thanks to low center of gravity
- **Angles of attack F and R** greater than **30 degrees**

4 AXLES

- **Drop portal axle** with **crown and pinion** or with **epicyclic reduction**
- **Four permanent wheel drive**
- **Three steering modes**
- **Differential lock®**

5 SAFETY

- The device for **blocking the aggravating movements is always activated**, with static or moving machine
- The MCSS system allows the machine to operate even when the stabilizers are placed in an **unusual configuration**

6 TRANSMISSION

- **Variable displacement** motor and pump
- Maximum **speed 40 kph**
- **Mechanical two-speed gearbox**
- **Finger-Touch** direction reversing control

7 HYDRAULIC SYSTEM

- Hydraulic pump with **Load-Sensing** device
- **Working pressure up to 240 bar**
- **Maximum operating capacity up to 160 lpm**, depending on the model

8 STABILIZERS

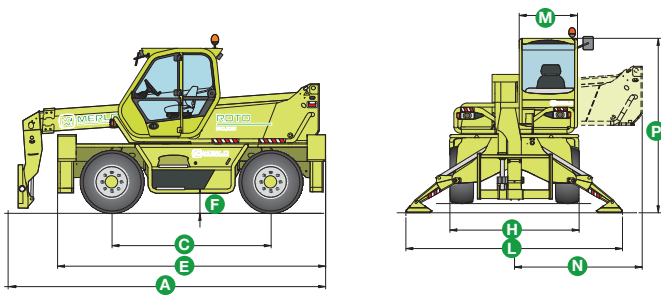
- **Four independent** hydraulic stabilizers ensure stability on any terrain
- **Automatic function** of stabilization and levelling®



ROTO 50.10

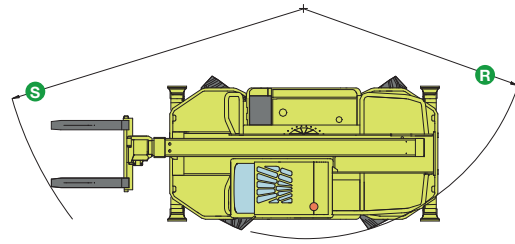
TECHNICAL DATA

ROTO 50.10 S



- **Maximum load capacity 5000 kg**
- **Maximum lift height 10.4 metres**
- **Turret rotation up to 415° (±208°)**
- **Cab steel frame complying with the international ISO 3449 Level II FOPS (Falling Object Protective Structure) standard**
- **Electro-mechanical joystick controls**
- **Steering wheel tilt adjustable by up to 16 degrees**
- **Folding stabilizers**
- **Hydropneumatic suspension** ensuring maximum driving comfort and stability when operating on tyres, by levelling the machine
- **Telescopic boom extension mechanism** housed entirely **within the boom** assembly for maximum protection and reliability
- **Fork carriage equipped with the hydraulic locking Tac-Lock system** giving an extraordinary competitive advantage against conventional, manual hook-up systems
- **Perkins turbo 4 cylinder engine, delivering 74.5 kW (101 HP)**
- **Hydrostatic transmission**
- **Load-sensing hydraulic pump**
- **Maximum speed 40 kph**

DIMENSIONS	50.10 S
A (mm)	5340
C (mm)	2760
E (mm)	4645
F (mm)	350 ⁽¹⁾
H (mm)	2240
L (mm)	3750
M (mm)	995
N (mm)	2220
P (mm)	2850
R (mm)	3920
S (mm)	5190



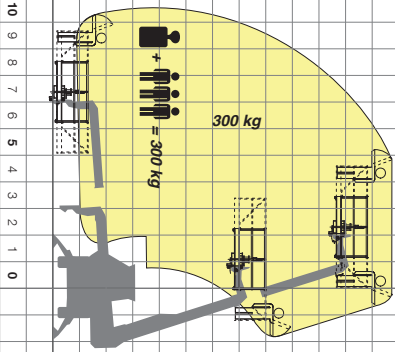
CHARACTERISTICS AND PERFORMANCE	50.10 S
Total weight unladen, with forks (kg)	11800
Maximum load capacity (kg)	5000
Maximum lift height (m)	10.4
Maximum forward reach (m)	7.6
Lift height at maximum load capacity (m)	9.1
Forward reach at maximum load capacity (m)	4.8
Load capacity at maximum height (kg)	4000
Load capacity at maximum forward reach (kg)	2000
Turret rotation (degrees)	415 ⁽³⁾
Engine (make/cylinder)	Perkins/4
Tier 3 engine power (kW/HP)	74.5/101
Fuel capacity (l)	150
Speed in the 1 st gear (kph)	11
Speed in the 2 nd gear (kph)	40
Load-Sensing hydraulic system (bar-l/min)	210-108
Hydraulic oil capacity (l)	130
Electrical circuit (V)	12
Battery (Ah)	160
Hydraulically controlled stabilizers	●
Hydropneumatic suspension	●
Cab compliant with FOPS standards	●
Tilting cab	-
Merlin electronic control system	-
Electro-mechanical joystick controls	●
Electronic joystick controls	-
Tac-Lock attachment coupling	● ⁽⁴⁾
Auxiliary boom hydraulic service	●
Two floating forks (1,200 mm long)	●
Hydrostatic transmission	●
Hydrostatic oil capacity (l)	12
Finger-Touch direction reversing control	●
Permanent four-wheel drive	●
Four wheel steering	●
Service disk brakes on all wheels	●
Automatically locking parking brake	●
Tyres	405/70-20
Radio remote control	○
Pneumatic seat	○
Rear differential lock	○
Four cab working lights (2 f. + 2 r.)	○
Manual air conditioning system	○
Roof window wiper	○
Manual battery isolator	○
Front and roof sun shade	○

● Standard. ○ Optional.

Performance figures refer to the machine equipped with forks, operating on stabilizers.

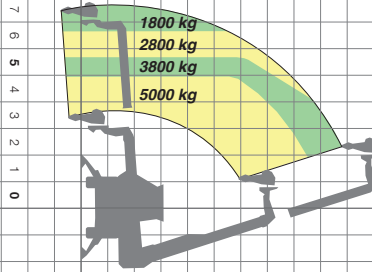
(1) Measured at suspension mid-point (± 65 mm); (2) Stabilising and levelling can be performed automatically; (3) ±208° with reference to the longitudinal axis of the machine; (4) ZM3 version front tool holder.

**ROTO 50.10 S
AERIAL WORK PLATFORM THROUGH 360°**



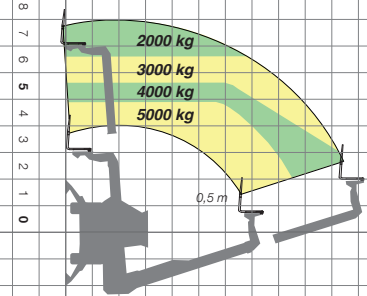
13
12
11
10
9
8
7
6
5
4
3
2
1
0
-1

**ROTO 50.10 S
WINCH THROUGH 360°**



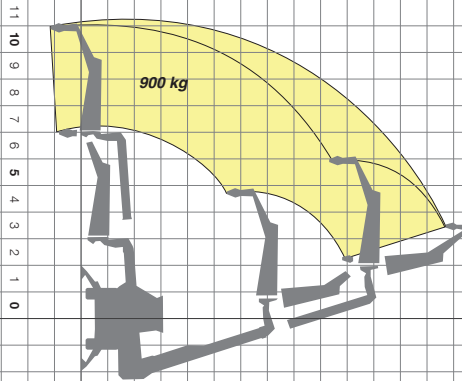
14
13
12
11
10
9
8
7
6
5
4
3
2
1
0
-1

**ROTO 50.10 S
FORKS ON STABILIZERS THROUGH 360°**



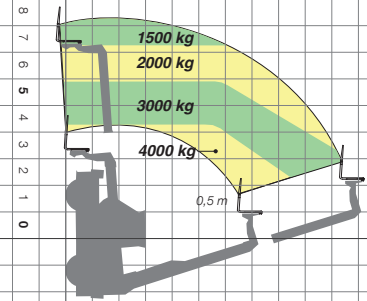
11
10
9
8
7
6
5
4
3
2
1
0
-1

**ROTO 50.10 S
FLY-JIB WITH WINCH THROUGH 360°**



11
10
9
8
7
6
5
4
3
2
1
0

**ROTO 50.10 S
FORKS ON TYRES - FRONT**

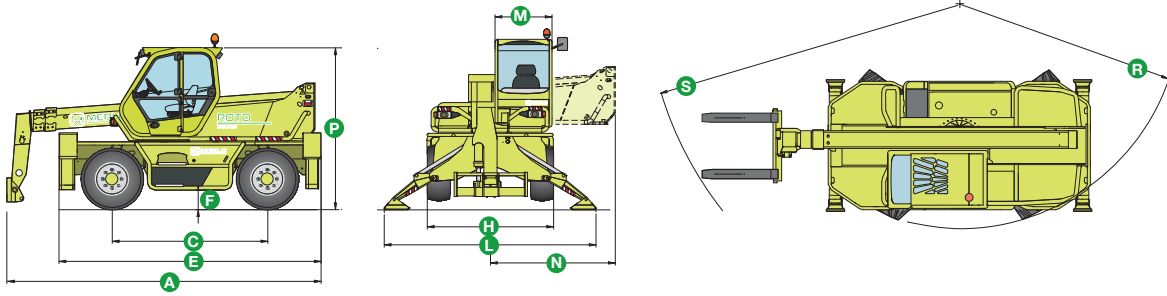


8
7
6
5
4
3
2
1
0

ROTO 38.14

TECHNICAL DATA

ROTO 38.14 / ROTO 38.14 S



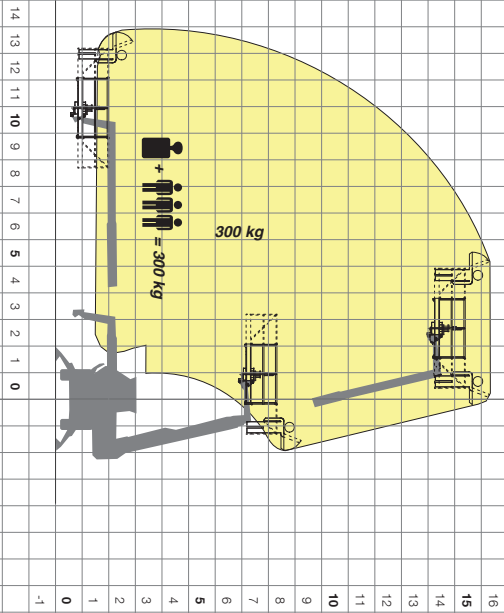
- Maximum load capacity **3800 kg**
- Maximum lift height **13.9 metres**
- Turret rotation up to **415° (±208°)**
- Cab steel frame complying with the international **ISO 3449 Level II FOPS** (Falling Object Protective Structure) standard
- **Electro-mechanical joystick** controls
- **Steering wheel tilt** adjustable by up to 16 degrees
- **Folding stabilizers**
- **Hydropneumatic suspension** ensuring maximum driving comfort and stability when operating on tyres, by levelling the machine (S version)
- Telescopic boom **extension mechanism** housed entirely **within the boom** assembly for maximum protection and reliability
- Fork carriage equipped with the hydraulic locking **Tac-Lock** system giving an extraordinary competitive advantage against conventional, manual hook-up systems
- **Perkins turbo 4 cylinder engine**, delivering **74.5 kW (101 HP)**
- **Hydrostatic transmission**
- **Load-sensing hydraulic pump**
- Maximum speed **40 kph** (S version)

DIMENSIONS	38.14 / 38.14 S
A (mm)	5565
C (mm)	2760
E (mm)	4645
F (mm)	350 ⁽¹⁾
H (mm)	2240
L (mm)	3750
M (mm)	995
N (mm)	2220
P (mm)	2850
R (mm)	3920
S (mm)	5380

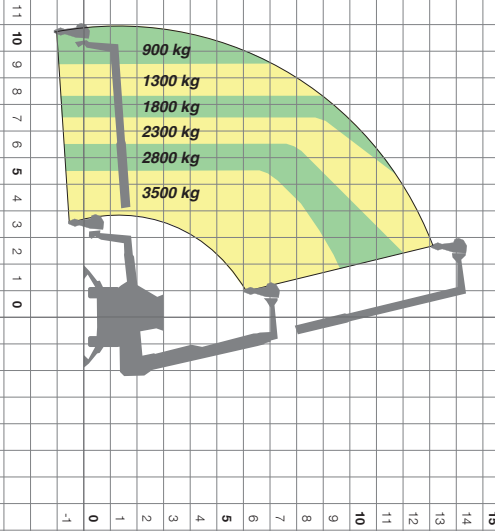
CHARACTERISTICS AND PERFORMANCE	38.14 / 38.14 S
Total weight unladen, with forks (kg)	11900 ⁽²⁾
Maximum load capacity (kg)	3800
Maximum lift height (m)	13.9
Maximum forward reach (m)	11
Lift height at maximum load capacity (m)	9.7
Forward reach at maximum load capacity (m)	5.5
Load capacity at maximum height (kg)	2500
Load capacity at maximum forward reach (kg)	1100
Turret rotation (degrees)	415 ⁽³⁾
Engine (make/cylinder)	Perkins/4
Tier 3 engine power (kW/HP)	74.5/101
Fuel capacity (l)	150
Speed in the 1 st gear (kph)	11 ⁽⁴⁾
Speed in the 2 nd gear (kph)	40 ⁽⁵⁾
Load-Sensing hydraulic system (bar-l/min)	210-108
Hydraulic oil capacity (l)	130
Electrical circuit (V)	12
Battery (Ah)	160
Hydraulically controlled stabilizers	● ⁽⁶⁾
Hydropneumatic suspension	● ⁽⁷⁾
Cab compliant with FOPS standards	●
Tilting cab	-
Merlin electronic control system	-
Electro-mechanical joystick controls	●
Electronic joystick controls	-
Tac-Lock attachment coupling	● ⁽⁸⁾
Auxiliary boom hydraulic service	●
Two floating forks (1,200 mm long)	●
Hydrostatic transmission	●
Hydrostatic oil capacity (l)	12
Finger-Touch direction reversing control	●
Permanent four-wheel drive	●
Four wheel steering	●
Service disk brakes on all wheels	●
Automatically locking parking brake	●
Tyres	405/70-20
Radio remote control	○
Pneumatic seat	○
Rear differential lock	○
Four cab working lights (2 f. + 2 r.)	○
Manual air conditioning system	○
Roof window wiper	○
Manual battery isolator	○
Front and roof sun shade	○

● Standard. ○ Optional.
 Performance figures refer to the machine equipped with forks, operating on stabilizers.
 (1) Measured at suspension mid-point (± 65 mm); (2) S version only. In the basic models the weight is 350 kg less; (3) ±208° with reference to the longitudinal axis of the machine;
 (4) S version only. The basic model features 7 kph maximum speed; (5) S version only. The basic model features 25 kph maximum speed;
 (6) Stabilising and levelling can be performed automatically; (7) S version only. The basic model has no hydropneumatic suspension; (8) ZM2 version front tool holder.

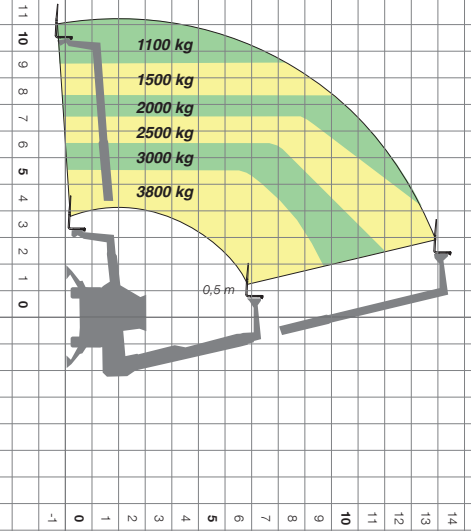
**ROTO 38.14 / ROTO 38.14 S
AERIAL WORK PLATFORM THROUGH 360°**



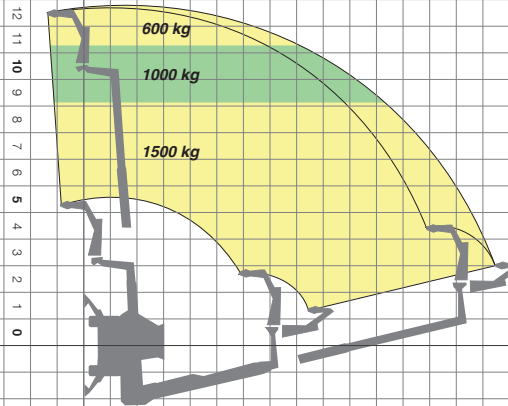
**ROTO 38.14 / ROTO 38.14 S
WINCH THROUGH 360°**



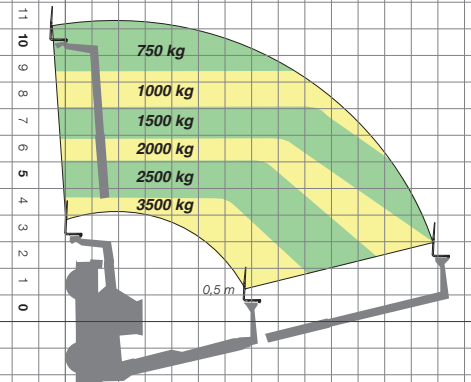
**ROTO 38.14 / ROTO 38.14 S
FORKS ON STABILIZERS THROUGH 360°**



**ROTO 38.14 / ROTO 38.14 S
FLY-JIB WITH WINCH THROUGH 360°**



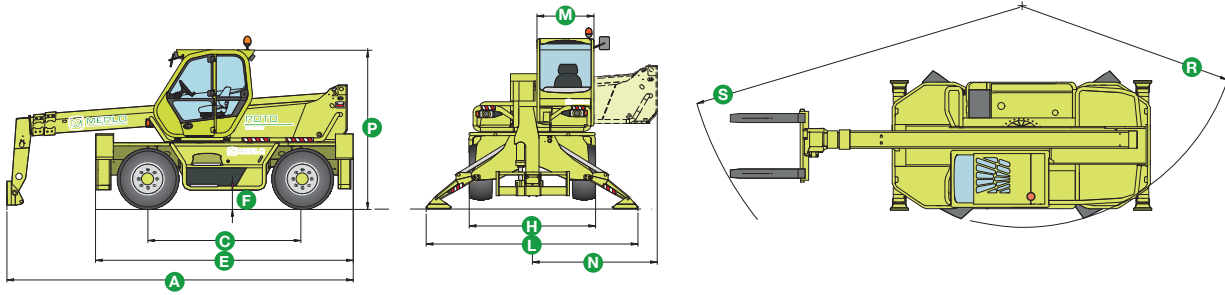
**ROTO 38.14 S
FORKS ON TYRES - FRONT**



ROTO 38.16

TECHNICAL DATA

ROTO 38.16 / ROTO 38.16 S



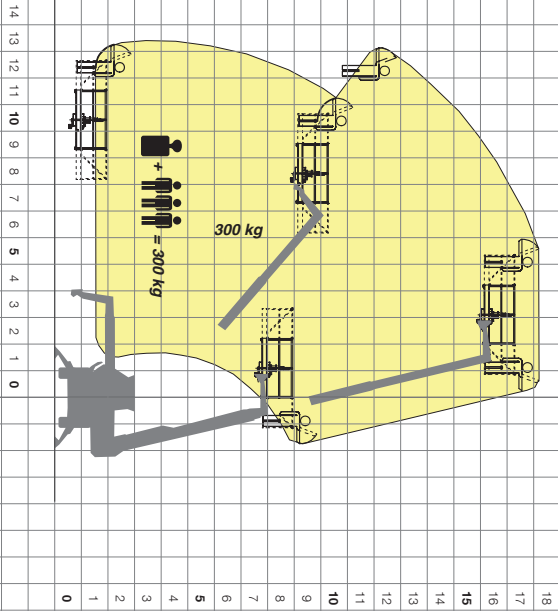
- Maximum load capacity **3800 kg**
- Maximum lift height **15.7 metres**
- Turret rotation up to **415°** ($\pm 208^\circ$)
- Cab steel frame complying with the international **ISO 3449 Level II FOPS** (Falling Object Protective Structure) standard
- **Electro-mechanical joystick** controls
- **Steering wheel tilt** adjustable by up to 16 degrees
- **Folding stabilizers**
- **Hydropneumatic suspension** ensuring maximum driving comfort and stability when operating on tyres, by levelling the machine (S version)
- Telescopic boom **extension mechanism** housed entirely **within the boom** assembly for maximum protection and reliability
- Fork carriage equipped with the hydraulic locking **Tac-Lock** system giving an extraordinary competitive advantage against conventional, manual hook-up systems
- **Perkins turbo 4 cylinder engine**, delivering **74.5 kW (101 HP)**
- **Hydrostatic transmission**
- **Load-sensing hydraulic pump**
- Maximum speed **40 kph** (S version)

DIMENSIONS	38.16 / 38.16 S
A (mm)	6240
C (mm)	2760
E (mm)	4645
F (mm)	350 ⁽¹⁾
H (mm)	2240
L (mm)	3750
M (mm)	995
N (mm)	2220
P (mm)	2850
R (mm)	4050
S (mm)	6000

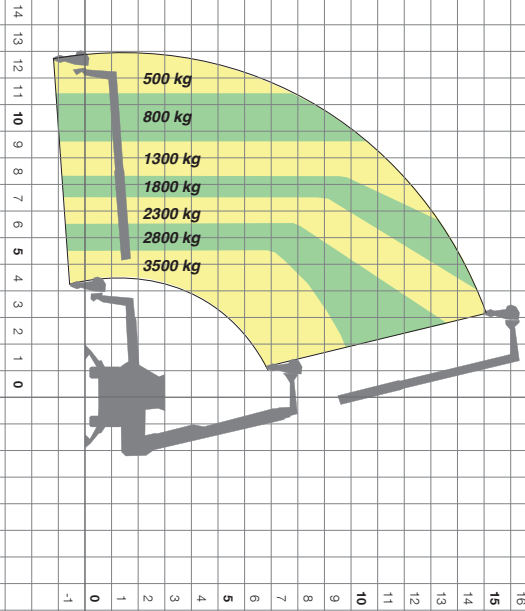
CHARACTERISTICS AND PERFORMANCE	38.16 / 38.16 S
Total weight unladen, with forks (kg)	12100 ⁽²⁾
Maximum load capacity (kg)	3800
Maximum lift height (m)	15.7
Maximum forward reach (m)	13
Lift height at maximum load capacity (m)	9.8
Forward reach at maximum load capacity (m)	5.5
Load capacity at maximum height (kg)	2500
Load capacity at maximum forward reach (kg)	700
Turret rotation (degrees)	415 ⁽³⁾
Engine (make/cylinder)	Perkins/4
Tier 3 engine power (kW/HP)	74.5/101
Fuel capacity (l)	150
Speed in the 1 st gear (kph)	11 ⁽⁴⁾
Speed in the 2 nd gear (kph)	40 ⁽⁵⁾
Load-Sensing hydraulic system (bar-l/min)	210-108
Hydraulic oil capacity (l)	130
Electrical circuit (V)	12
Battery (Ah)	160
Hydraulically controlled stabilizers	● ⁽⁶⁾
Hydropneumatic suspension	● ⁽⁷⁾
Cab compliant with FOPS standards	●
Tilting cab	-
Merlin electronic control system	-
Electro-mechanical joystick controls	●
Electronic joystick controls	-
Tac-Lock attachment coupling	● ⁽⁸⁾
Auxiliary boom hydraulic service	●
Two floating forks (1,200 mm long)	●
Hydrostatic transmission	●
Hydrostatic oil capacity (l)	12
Finger-Touch direction reversing control	●
Permanent four-wheel drive	●
Four wheel steering	●
Service disk brakes on all wheels	●
Automatically locking parking brake	●
Tyres	405/70-20
Radio remote control	○
Pneumatic seat	○
Rear differential lock	○
Four cab working lights (2 f. + 2 r.)	○
Manual air conditioning system	○
Roof window wiper	○
Manual battery isolator	○
Front and roof sun shade	○

● Standard. ○ Optional.
 Performance figures refer to the machine equipped with forks, operating on stabilizers.
 (1) Measured at suspension mid-point (± 65 mm); (2) S version only. In the basic models the weight is 350 kg less; (3) $\pm 208^\circ$ with reference to the longitudinal axis of the machine; (4) S version only. The basic model features 7 kph maximum speed; (5) S version only. The basic model features 25 kph maximum speed; (6) Stabilising and levelling can be performed automatically; (7) S version only. The basic model has no hydropneumatic suspension; (8) ZM2 version front tool holder.

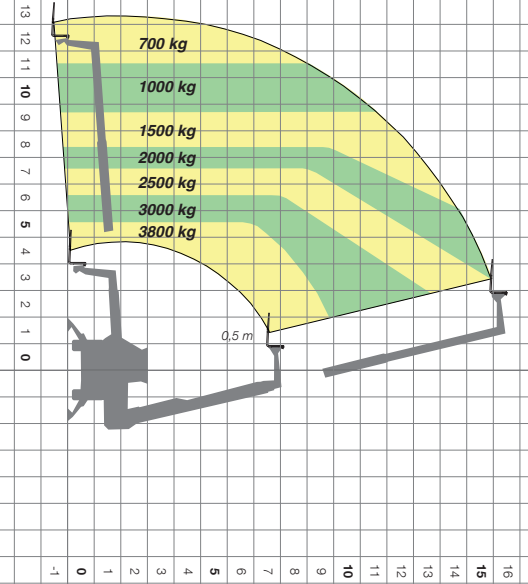
**ROTO 38.16 / ROTO 38.16 S
AERIAL WORK PLATFORM THROUGH 360°**



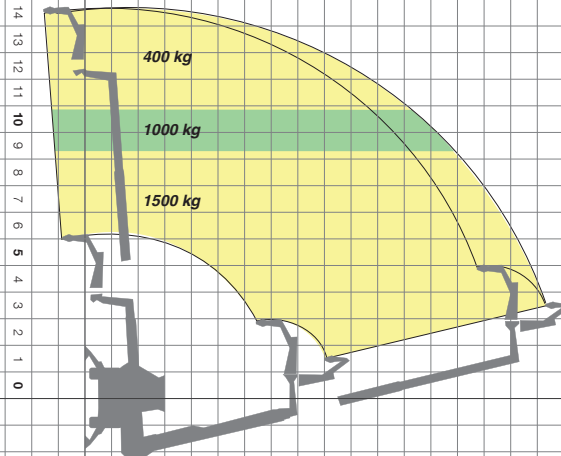
**ROTO 38.16 / ROTO 38.16 S
WINCH THROUGH 360°**



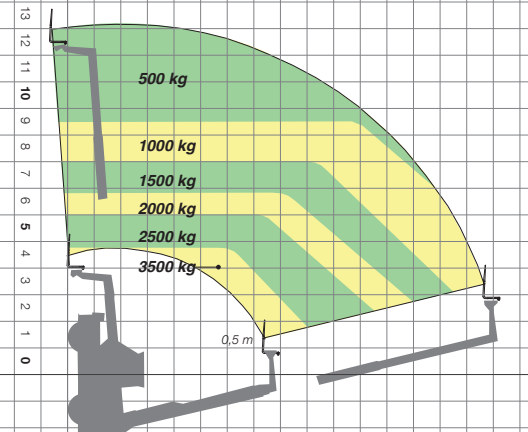
**ROTO 38.16 / ROTO 38.16 S
FORKS ON STABILIZERS THROUGH 360°**



**ROTO 38.16 / ROTO 38.16 S
FLY-JIB WITH WINCH THROUGH 360°**



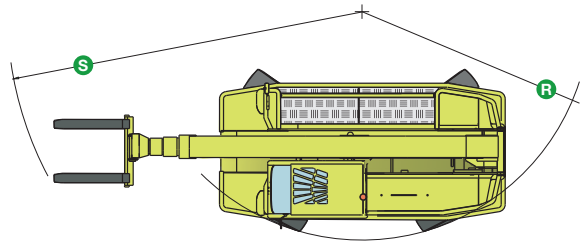
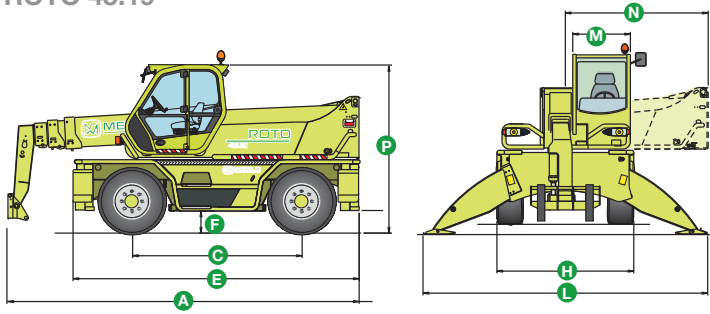
**ROTO 38.16 S
FORKS ON TYRES - FRONT**



ROTO 45.19

TECHNICAL DATA

ROTO 45.19



- Maximum load capacity **4500 kg**
- Maximum lift height **18.7 metres**
- Turret rotation up to **600°** ($\pm 300^\circ$)
- Cab steel frame complying with the international **ISO 3449 Level II FOPS** (Falling Object Protective Structure) standard
- **Electro-mechanical joystick** controls
- **Steering wheel tilt** adjustable by up to 16 degrees
- **Folding stabilizers**
- **Hydropneumatic suspension** ensuring maximum driving comfort and stability when operating on tyres, by levelling the machine
- Telescopic boom **extension mechanism** housed entirely **within the boom** assembly for maximum protection and reliability
- Fork carriage equipped with the hydraulic locking **Tac-Lock** system giving an extraordinary competitive advantage against conventional, manual hook-up systems
- **Deutz turbo 4 cylinder engine**, delivering **88 kW (120 HP)**
- **Hydrostatic transmission**
- **Load-sensing hydraulic pump**
- Maximum speed **25 kph**

DIMENSIONS	45.19
A (mm)	6075
C (mm)	2970
E (mm)	5060
F (mm)	430
H (mm)	2400
L (mm)	5030
M (mm)	995
N (mm)	2505
P (mm)	2980
R (mm)	4050
S (mm)	5150

CHARACTERISTICS AND PERFORMANCE	45.19
Total weight unladen, with forks (kg)	14650
Maximum load capacity (kg)	4500
Maximum lift height (m)	18.7
Maximum forward reach (m)	15.8
Lift height at maximum load capacity (m)	10.9
Forward reach at maximum load capacity (m)	7
Load capacity at maximum height (kg)	3000
Load capacity at maximum forward reach (kg)	650
Turret rotation (degrees)	600 ⁽¹⁾
Engine (make/cylinder)	Deutz/4
Tier 3 engine power (kW/HP)	88/120
Fuel capacity (l)	150
Speed in the 1 st gear (kph)	7
Speed in the 2 nd gear (kph)	25
Load-Sensing hydraulic system (bar-l/min)	240-115
Hydraulic oil capacity (l)	160
Electrical circuit (V)	12
Battery (Ah)	160
Hydraulically controlled stabilizers	● ⁽²⁾
Hydropneumatic suspension	-
Cab compliant with FOPS standards	●
Tilting cab	-
Merlin electronic control system	-
Electro-mechanical joystick controls	●
Electronic joystick controls	-
Tac-Lock attachment coupling	● ⁽³⁾
Auxiliary boom hydraulic service	●
Two floating forks (1,200 mm long)	●
Hydrostatic transmission	●
Hydrostatic oil capacity (l)	12
Finger-Touch direction reversing control	●
Permanent four-wheel drive	●
Four wheel steering	●
Service disk brakes on all wheels	●
Automatically locking parking brake	●
Tyres	18-22.5
Radio remote control	○
Pneumatic seat	○
Rear differential lock	○
Four cab working lights (2 f. + 2 r.)	○
Manual air conditioning system	○
Roof window wiper	○
Manual battery isolator	○
Front and roof sun shade	○

● Standard. ○ Optional.

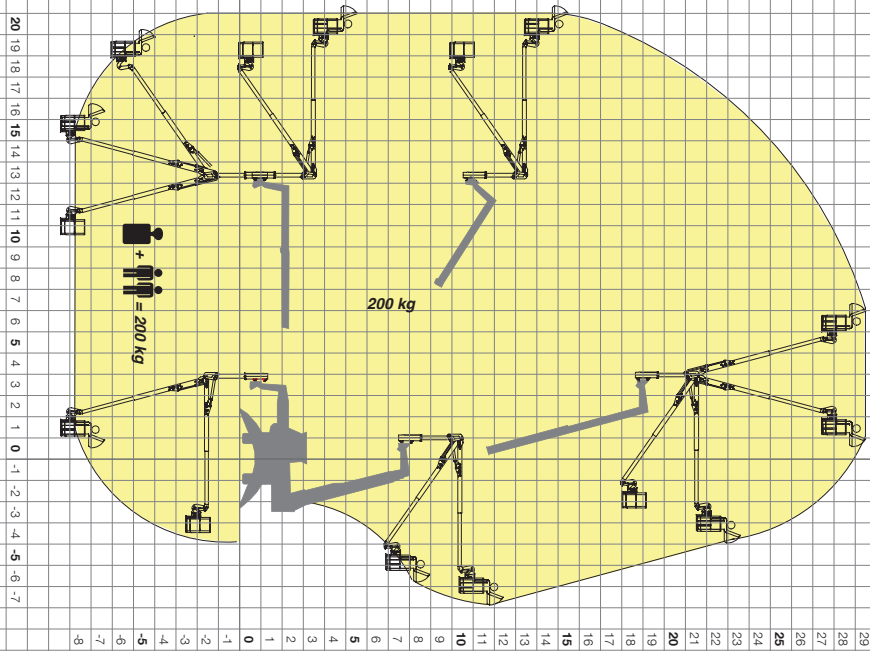
Performance figures refer to the machine equipped with forks, operating on stabilizers.

(1) $\pm 300^\circ$ with reference to the longitudinal axis of the machine;

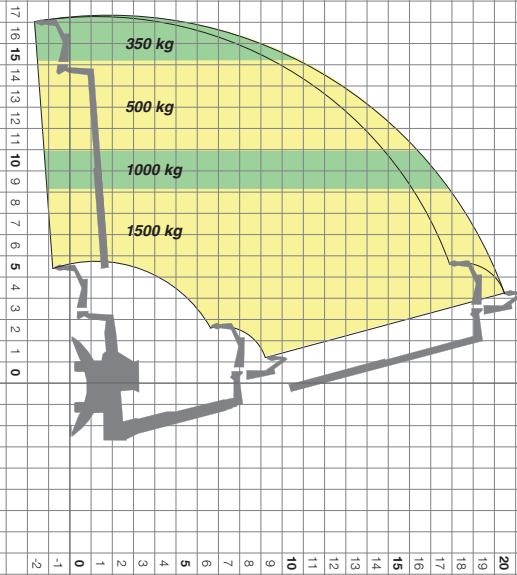
(2) Stabilising and levelling can be performed automatically;

(3) ZM2 version front tool holder.

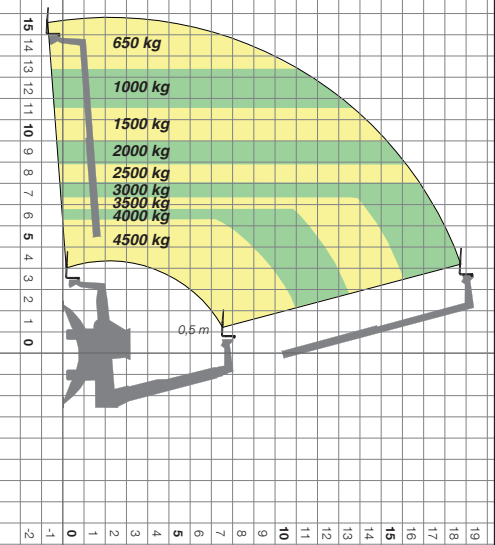
**ROTO 45.19
SPACE SYSTEM THROUGH 360°**



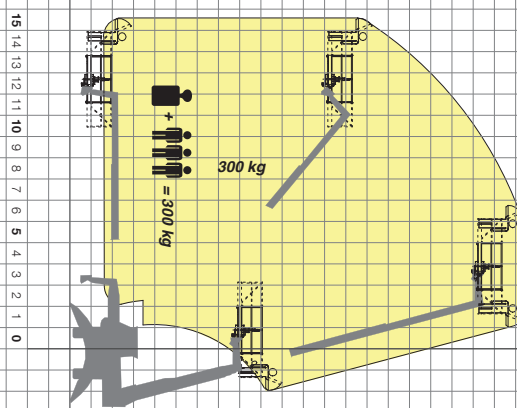
**ROTO 45.19
FLY-JIB WITH WINCH THROUGH 360°**



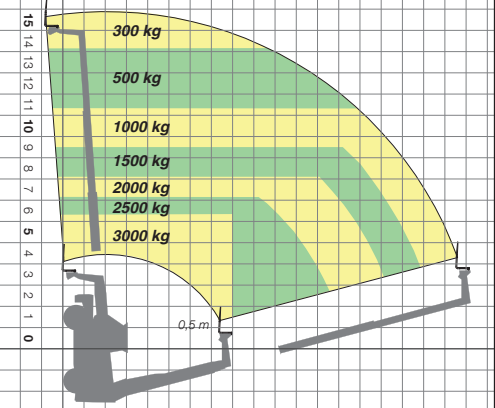
**ROTO 45.19
FORKS ON STABILIZERS
THROUGH 360°**



**ROTO 45.19
AERIAL WORK PLATFORM THROUGH 360°**



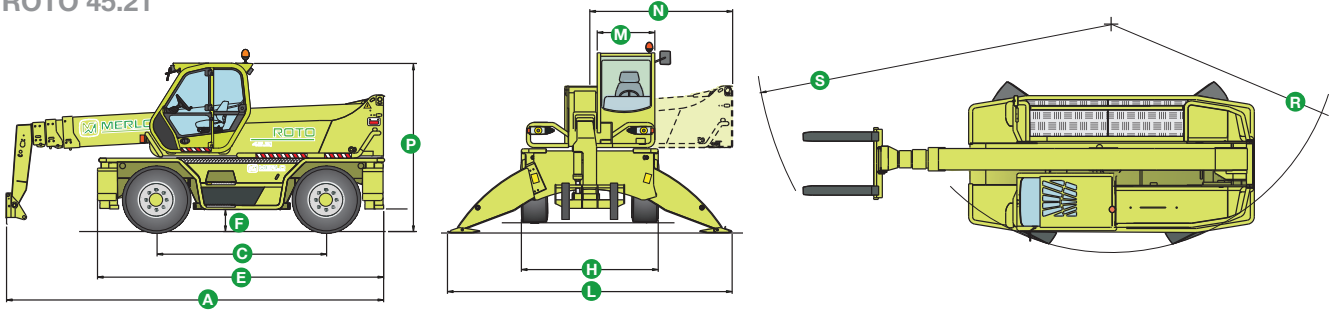
**ROTO 45.19
FORKS ON TYRES - FRONT**



ROTO 45.21

TECHNICAL DATA

ROTO 45.21



- Maximum load capacity **4500 kg**
- Maximum lift height **20.8 metres**
- Turret rotation up to **600°** ($\pm 300^\circ$)
- Cab steel frame complying with the international **ISO 3449 Level II FOPS** (Falling Object Protective Structure) standard
- **Electro-mechanical joystick** controls
- **Steering wheel tilt** adjustable by up to 16 degrees
- **Folding stabilizers**
- **Hydropneumatic suspension** ensuring maximum driving comfort and stability when operating on tyres, by levelling the machine
- Telescopic boom **extension mechanism** housed entirely **within the boom** assembly for maximum protection and reliability
- Fork carriage equipped with the hydraulic locking **Tac-Lock** system giving an extraordinary competitive advantage against conventional, manual hook-up systems
- **Deutz turbo 4 cylinder engine**, delivering **88 kW (120 HP)**
- **Hydrostatic transmission**
- **Load-sensing hydraulic pump**
- Maximum speed **25 kph**

DIMENSIONS	45.21
A (mm)	6600
C (mm)	2970
E (mm)	5060
F (mm)	430
H (mm)	2400
L (mm)	5030
M (mm)	995
N (mm)	2505
P (mm)	2980
R (mm)	4050
S (mm)	6100

CHARACTERISTICS AND PERFORMANCE	45.21
Total weight unladen, with forks (kg)	15050
Maximum load capacity (kg)	4500
Maximum lift height (m)	20.8
Maximum forward reach (m)	18
Lift height at maximum load capacity (m)	10,6
Forward reach at maximum load capacity (m)	7.1
Load capacity at maximum height (kg)	2500
Load capacity at maximum forward reach (kg)	600
Turret rotation (degrees)	600 ⁽¹⁾
Engine (make/cylinder)	Deutz/4
Tier 3 engine power (kW/HP)	88/120
Fuel capacity (l)	150
Speed in the 1 st gear (kph)	7
Speed in the 2 nd gear (kph)	25
Load-Sensing hydraulic system (bar-l/min)	240-115
Hydraulic oil capacity (l)	160
Electrical circuit (V)	12
Battery (Ah)	160
Hydraulically controlled stabilizers	● ⁽²⁾
Hydropneumatic suspension	-
Cab compliant with FOPS standards	●
Tilting cab	-
Merlin electronic control system	-
Electro-mechanical joystick controls	●
Electronic joystick controls	-
Tac-Lock attachment coupling	● ⁽³⁾
Auxiliary boom hydraulic service	●
Two floating forks (1,200 mm long)	●
Hydrostatic transmission	●
Hydrostatic oil capacity (l)	12
Finger-Touch direction reversing control	●
Permanent four-wheel drive	●
Four wheel steering	●
Service disk brakes on all wheels	●
Automatically locking parking brake	●
Tyres	18-22.5
Radio remote control	○
Pneumatic seat	○
Rear differential lock	○
Four cab working lights (2 f. + 2 r.)	○
Manual air conditioning system	○
Roof window wiper	○
Manual battery isolator	○
Front and roof sun shade	○

● Standard. ○ Optional.

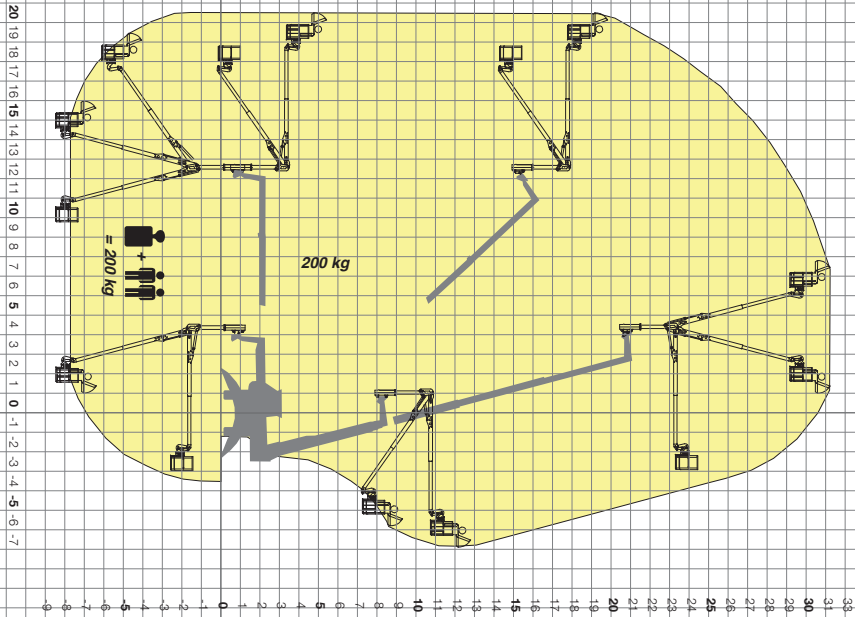
Performance figures refer to the machine equipped with forks, operating on stabilizers.

(1) $\pm 300^\circ$ with reference to the longitudinal axis of the machine;

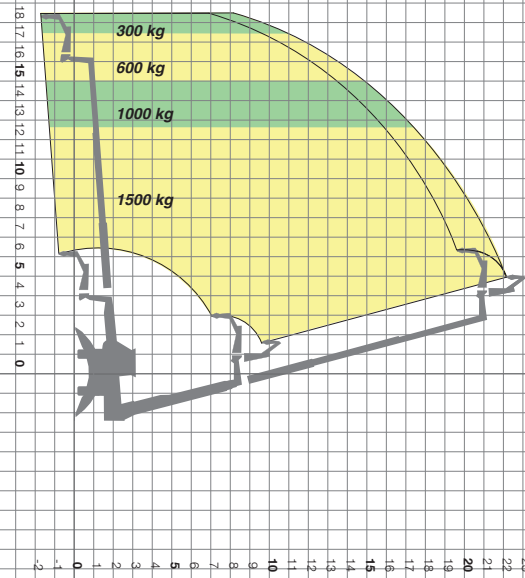
(2) Stabilising and levelling can be performed automatically;

(3) ZM2 version front tool holder.

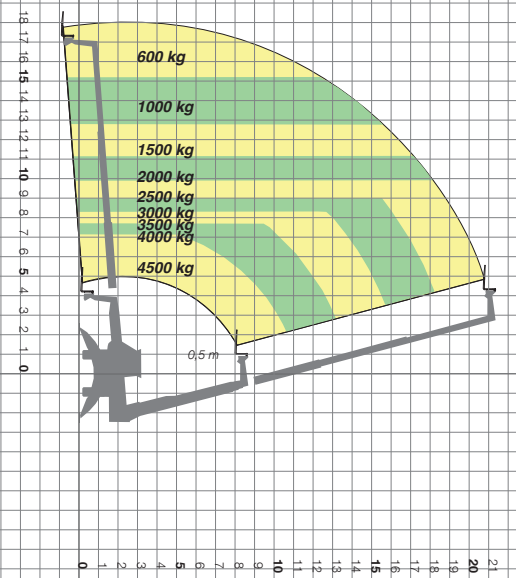
**ROTO 45.21
SPACE SYSTEM THROUGH 360°**



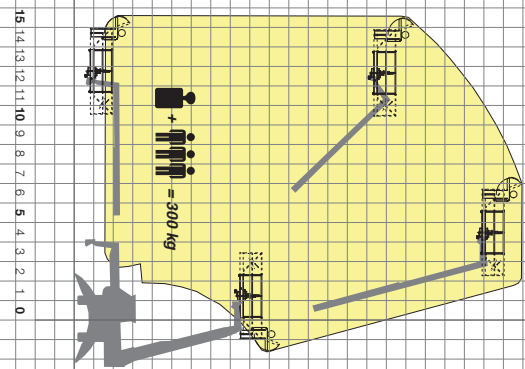
**ROTO 45.21
FLY-JIB WITH WINCH THROUGH 360°**



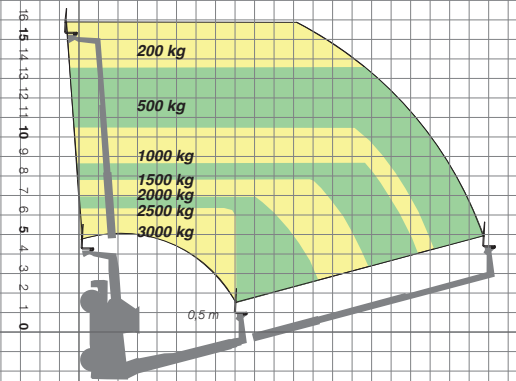
**ROTO 45.21
FORKS ON STABILIZERS THROUGH 360°**



**ROTO 45.21
AERIAL WORK PLATFORM THROUGH 360°**



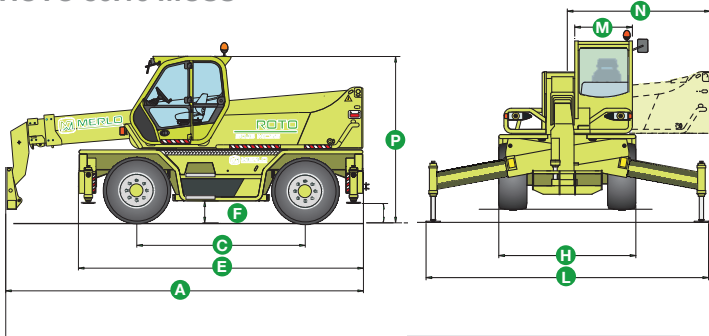
**ROTO 45.21
FORKS ON TYRES - FRONT**



ROTO 50.16 MCSS

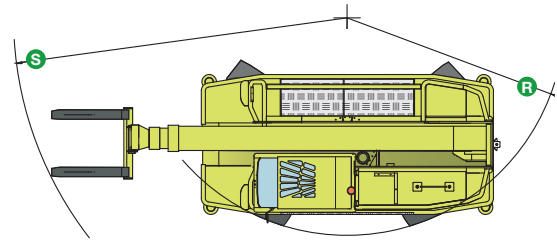
TECHNICAL DATA

ROTO 50.16 MCSS



- **Maximum load capacity 5000 kg**
- **Maximum lift height 16.4 metres**
- **Continuous turret rotation** achieved through a Merlo electro-hydraulic central rotary coupling
- **Cab steel frame** complying with the international **ISO 3449 Level II FOPS** (Falling Object Protective Structure) standard
- **Pneumatic suspension seat**
- **Electronic joystick controls**
- **Steering wheel tilt** adjustable by up to 16 degrees
- **Merlin system** (Merlo Local Interactive Network) providing a completely new way to automatically manage all the operating parameters and safety functions
- **MCSS system** (Merlin Continuous Slew Safety) adjusting automatically the load diagram to suit the stabiliser position chosen by the operator
- **Stabilizers** with independent extension and jacking
- **Hydropneumatic suspension** ensuring maximum driving comfort and stability when operating on tyres, by levelling the machine
- **Iveco turbo intercooler 6 cylinder engine**, delivering **107 kW (145 HP)**
- **Hydrostatic transmission** utilising variable displacement motor and pump
- **Load-sensing hydraulic pump**
- **Maximum speed 40 kph**

DIMENSIONS	50.16 MCSS
A (mm)	6380
C (mm)	2990
E (mm)	5030
F (mm)	330 ⁽¹⁾
H (mm)	2400
L (mm)	4950
M (mm)	995
N (mm)	2505
P (mm)	2950
R (mm)	4050
S (mm)	5900



CHARACTERISTICS AND PERFORMANCE	50.16 MCSS
Total weight unladen, with forks (kg)	14750
Maximum load capacity (kg)	5000
Maximum lift height (m)	16.4
Maximum forward reach (m)	13.4
Lift height at maximum load capacity (m)	10.9
Forward reach at maximum load capacity (m)	6.1
Load capacity at maximum height (kg)	3000
Load capacity at maximum forward reach (kg)	1300
Turret rotation (degrees)	Continuous
Engine (make/cylinder)	Iveco/6
Tier 3 engine power (kW/HP)	107/145
Fuel capacity (l)	150
Speed in the 1 st gear (kph)	16
Speed in the 2 nd gear (kph)	40
Load-Sensing hydraulic system (bar-l/min)	240-108
Hydraulic oil capacity (l)	160
Electrical circuit (V)	12
Battery (Ah)	160
Hydraulically controlled stabilizers	●
Hydropneumatic suspension	●
Cab compliant with FOPS standards	●
Tilting cab	-
Merlin electronic control system	●
Electro-mechanical joystick controls	-
Electronic joystick controls	●
Tac-Lock attachment coupling	● ⁽²⁾
Auxiliary boom hydraulic service	●
Two floating forks (1,200 mm long)	●
Hydrostatic transmission	●
Hydrostatic oil capacity (l)	12
Finger-Touch direction reversing control	●
Permanent four-wheel drive	●
Four wheel steering	●
Service disk brakes on all wheels	●
Automatically locking parking brake	●
Tyres	18-22.5
Radio remote control	○
Pneumatic seat	●
Rear differential lock	○
Four cab working lights (2 f. + 2 r.)	○
Manual air conditioning system	○
Roof window wiper	○
Manual battery isolator	○
Front and roof sun shade	○

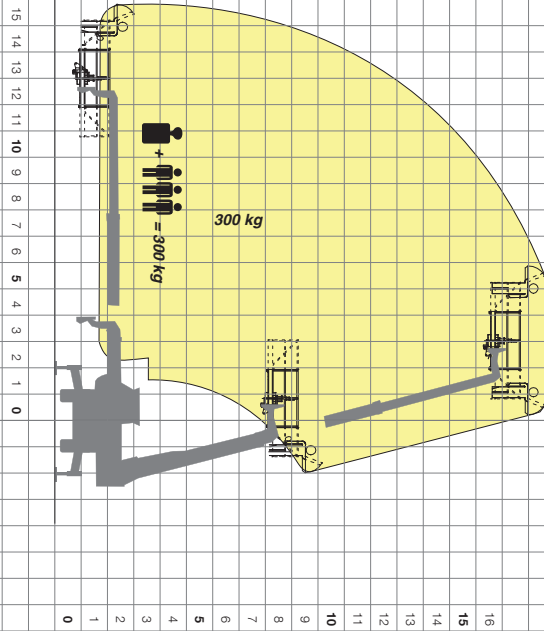
● Standard. ○ Optional.

Performance figures refer to the machine equipped with forks, operating on stabilizers.

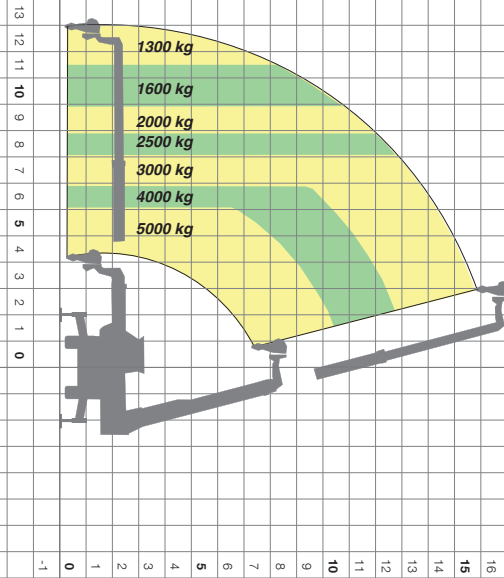
(1) Measured at suspension mid-point (± 65 mm);

(2) ZM3 version front tool holder.

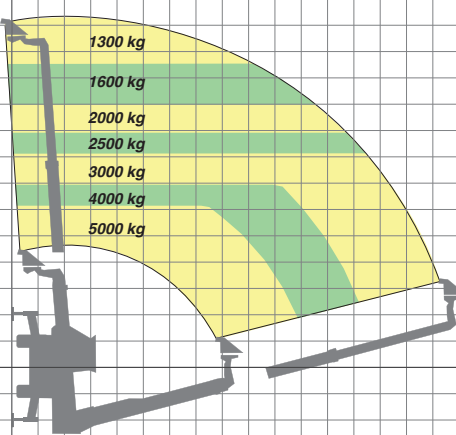
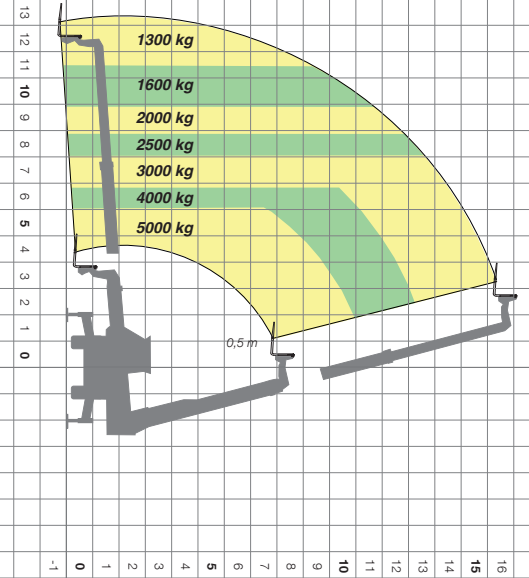
**ROTO 50.16 MCSS
AERIAL WORK PLATFORM THROUGH 360°**



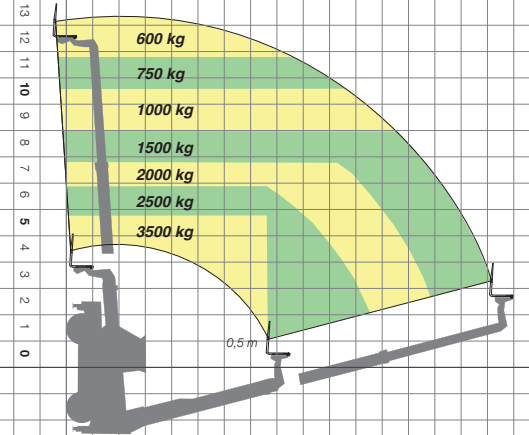
**ROTO 50.16 MCSS
WINCH THROUGH 360°**



**ROTO 50.16 MCSS
FORKS ON STABILIZERS THROUGH 360°**



**ROTO 50.16 MCSS
HOOK ON CARRIAGE THROUGH 360°**

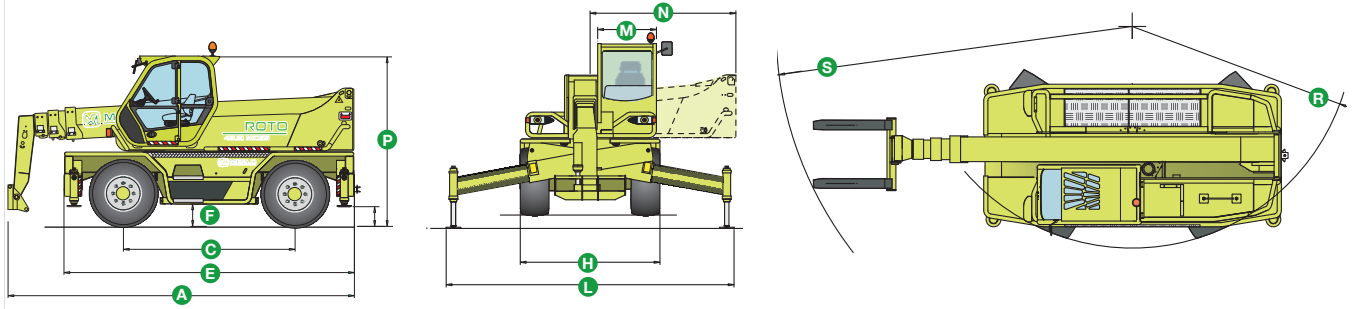


**ROTO 50.16 MCSS
FORKS ON TYRES - FRONT**

ROTO 45.19 MCSS

TECHNICAL DATA

ROTO 45.19 MCSS



- **Maximum load capacity 4500 kg**
- **Maximum lift height 18.7 metres**
- **Continuous turret rotation** achieved through a Merlo electro-hydraulic central rotary coupling
- **Cab steel frame** complying with the international **ISO 3449 Level II FOPS** (Falling Object Protective Structure) standard
- **Pneumatic suspension** seat
- **Electronic joystick** controls
- **Steering wheel tilt** adjustable by up to 16 degrees
- **Merlin system** (Merlo Local Interactive Network) providing a completely new way to automatically manage all the operating parameters and safety functions
- **MCSS system** (Merlin Continuous Slew Safety) adjusting automatically the load diagram to suit the stabiliser position chosen by the operator
- **Stabilizers** with independent extension and jacking
- **Hydropneumatic suspension** ensuring maximum driving comfort and stability when operating on tyres, by levelling the machine
- **Iveco turbo intercooler 6 cylinder engine**, delivering **107 kW (145 HP)**
- **Hydrostatic transmission** utilising variable displacement motor and pump
- **Load-sensing hydraulic pump**
- **Maximum speed 40 kph**

DIMENSIONS	45.19 MCSS
A (mm)	6075
C (mm)	2990
E (mm)	5030
F (mm)	330 ⁽¹⁾
H (mm)	2400
L (mm)	4950
M (mm)	995
N (mm)	2505
P (mm)	2950
R (mm)	4050
S (mm)	5150

CHARACTERISTICS AND PERFORMANCE	45.19 MCSS
Total weight unladen, with forks (kg)	14550
Maximum load capacity (kg)	4500
Maximum lift height (m)	18.7
Maximum forward reach (m)	15.9
Lift height at maximum load capacity (m)	11
Forward reach at maximum load capacity (m)	7.6
Load capacity at maximum height (kg)	3000
Load capacity at maximum forward reach (kg)	900
Turret rotation (degrees)	Continuous
Engine (make/cylinder)	Iveco/6
Tier 3 engine power (kW/HP)	107/145
Fuel capacity (l)	150
Speed in the 1 st gear (kph)	16
Speed in the 2 nd gear (kph)	40
Load-Sensing hydraulic system (bar-l/min)	240-108
Hydraulic oil capacity (l)	160
Electrical circuit (V)	12
Battery (Ah)	160
Hydraulically controlled stabilizers	●
Hydropneumatic suspension	●
Cab compliant with FOPS standards	●
Tilting cab	-
Merlin electronic control system	●
Electro-mechanical joystick controls	-
Electronic joystick controls	●
Tac-Lock attachment coupling	● ⁽²⁾
Auxiliary boom hydraulic service	●
Two floating forks (1,200 mm long)	●
Hydrostatic transmission	●
Hydrostatic oil capacity (l)	12
Finger-Touch direction reversing control	●
Permanent four-wheel drive	●
Four wheel steering	●
Service disk brakes on all wheels	●
Automatically locking parking brake	●
Tyres	18-22.5
Radio remote control	○
Pneumatic seat	●
Rear differential lock	○
Four cab working lights (2 f. + 2 r.)	○
Manual air conditioning system	○
Roof window wiper	○
Manual battery isolator	○
Front and roof sun shade	○

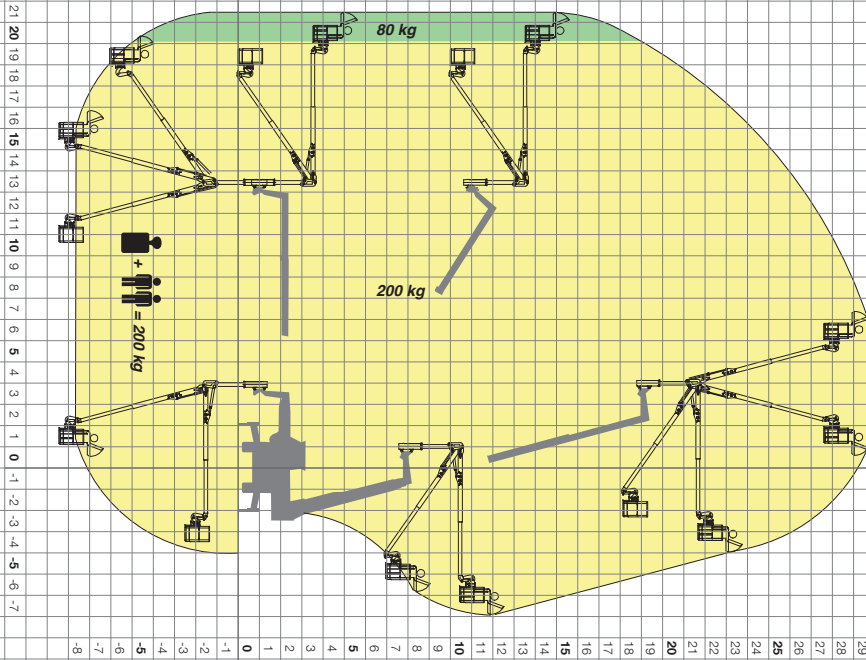
● Standard. ○ Optional.

Performance figures refer to the machine equipped with forks, operating on stabilizers.

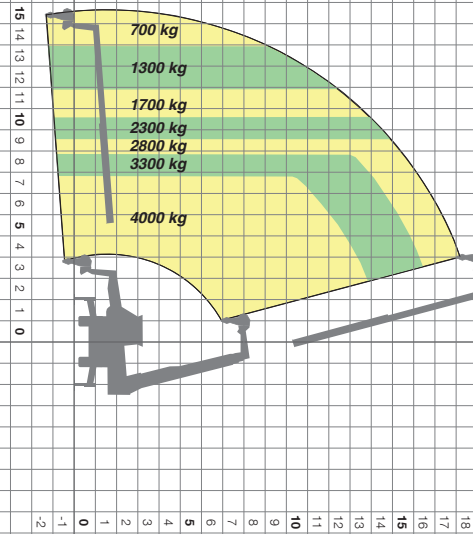
(1) Measured at suspension mid-point (± 65 mm);

(2) ZM2 version front tool holder.

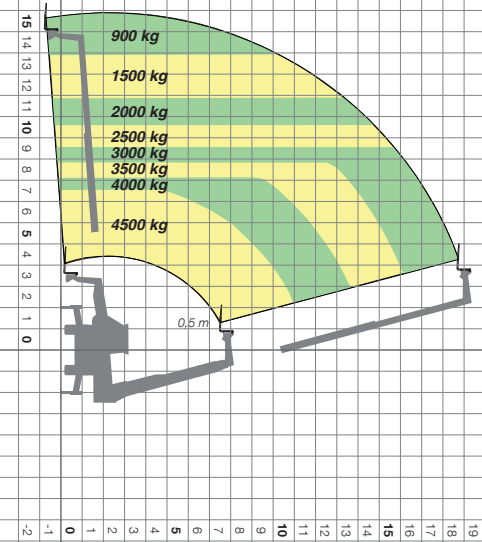
**ROTO 45.19 MCSS
SPACE SYSTEM THROUGH 360°**



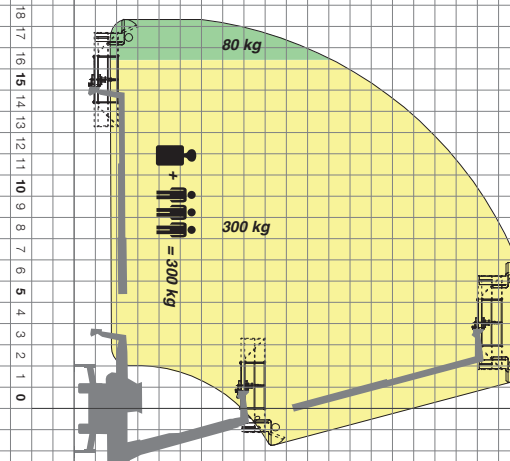
**ROTO 45.19 MCSS
WINCH THROUGH 360°**



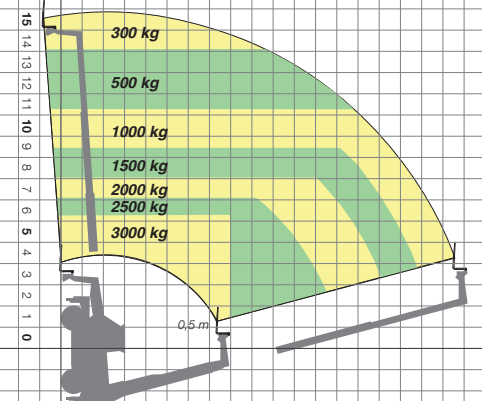
**ROTO 45.19 MCSS
FORKS ON STABILIZERS
THROUGH 360°**



**ROTO 45.19 MCSS
AERIAL WORK PLATFORM THROUGH 360°**



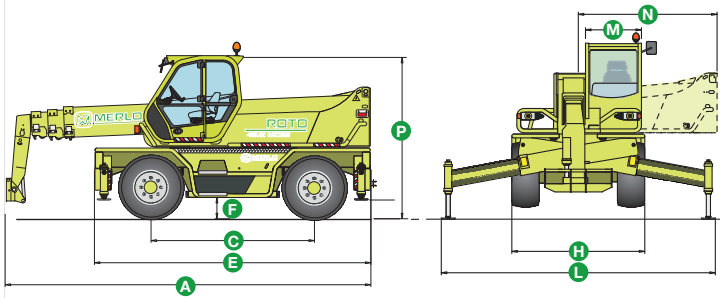
**ROTO 45.19 MCSS
FORKS ON TYRES - FRONT**



ROTO 45.21 MCSS

TECHNICAL DATA

ROTO 45.21 MCSS



- **Maximum load capacity 4500 kg**
- **Maximum lift height 20.8 metres**
- **Continuous turret rotation** achieved through a Merlo electro-hydraulic central rotary coupling
- **Cab steel frame** complying with the international **ISO 3449 Level II FOPS** (Falling Object Protective Structure) standard
- **Pneumatic suspension seat**
- **Electronic joystick controls**
- **Steering wheel tilt** adjustable by up to 16 degrees
- **Merlin system** (Merlo Local Interactive Network) providing a completely new way to automatically manage all the operating parameters and safety functions
- **MCSS system** (Merlin Continuous Slew Safety) adjusting automatically the load diagram to suit the stabiliser position chosen by the operator
- **Stabilizers** with independent extension and jacking
- **Hydropneumatic suspension** ensuring maximum driving comfort and stability when operating on tyres, by levelling the machine
- **Iveco turbo intercooler 6 cylinder engine**, delivering **107 kW (145 HP)**
- **Hydrostatic transmission** utilising variable displacement motor and pump
- **Load-sensing hydraulic pump**
- **Maximum speed 40 kph**

DIMENSIONS	45.21 MCSS
A (mm)	6600
C (mm)	2990
E (mm)	5030
F (mm)	330 ⁽¹⁾
H (mm)	2400
L (mm)	4950
M (mm)	995
N (mm)	2505
P (mm)	2990
R (mm)	4050
S (mm)	6580

CHARACTERISTICS AND PERFORMANCE	45.21 MCSS
Total weight unladen, with forks (kg)	15050
Maximum load capacity (kg)	4500 ⁽²⁾
Maximum lift height (m)	20.8 ⁽²⁾
Maximum forward reach (m)	18
Lift height at maximum load capacity (m)	10.7
Forward reach at maximum load capacity (m)	7.6
Load capacity at maximum height (kg)	2500
Load capacity at maximum forward reach (kg)	750
Turret rotation (degrees)	Continuous
Engine (make/cylinder)	Iveco/6
Tier 3 engine power (kW/HP)	107/145
Fuel capacity (l)	150
Speed in the 1 st gear (kph)	16
Speed in the 2 nd gear (kph)	40
Load-Sensing hydraulic system (bar-l/min)	240-108
Hydraulic oil capacity (l)	160
Electrical circuit (V)	12
Battery (Ah)	160
Hydraulically controlled stabilizers	●
Hydropneumatic suspension	●
Cab compliant with FOPS standards	●
Tilting cab	-
Merlin electronic control system	●
Electro-mechanical joystick controls	-
Electronic joystick controls	●
Tac-Lock attachment coupling	● ⁽³⁾
Auxiliary boom hydraulic service	●
Two floating forks (1,200 mm long)	●
Hydrostatic transmission	●
Hydrostatic oil capacity (l)	12
Finger-Touch direction reversing control	●
Permanent four-wheel drive	●
Four wheel steering	●
Service disk brakes on all wheels	●
Automatically locking parking brake	●
Tyres	18-22.5
Radio remote control	○
Pneumatic seat	●
Rear differential lock	○
Four cab working lights (2 f. + 2 r.)	○
Manual air conditioning system	○
Roof window wiper	○
Manual battery isolator	○
Front and roof sun shade	○

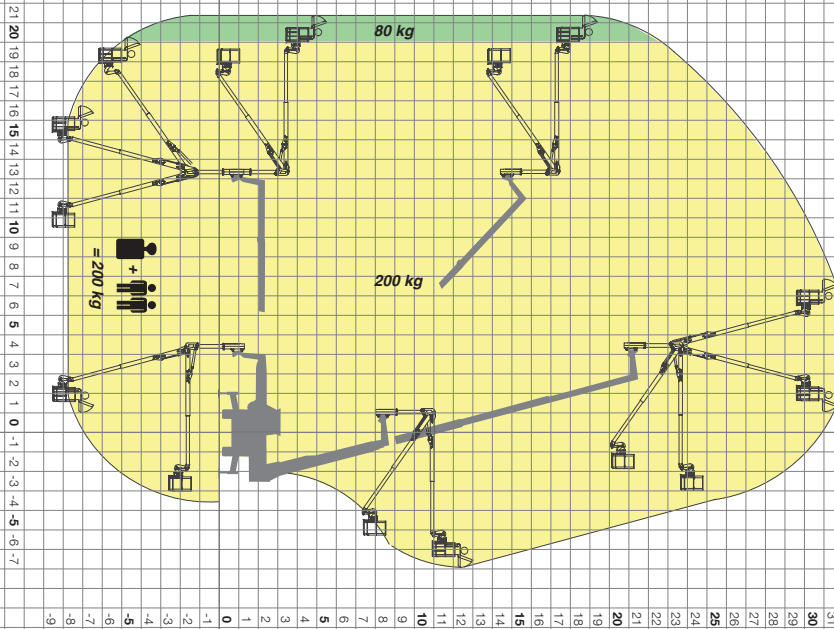
● Standard. ○ Optional.

Performance figures refer to the machine equipped with forks, operating on stabilizers.

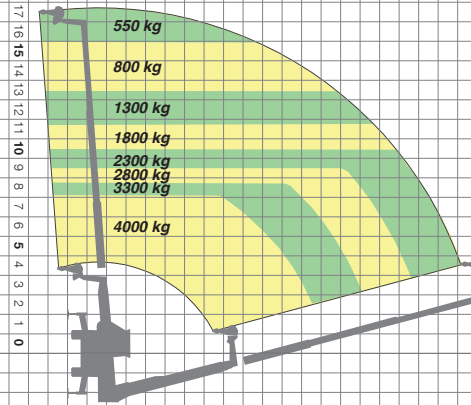
(1) Measured at suspension mid-point (± 65 mm);

(2) Tower-Jib version with maximum lift capacity of 800 kg and maximum lift height of 31.7 m; (3) ZM2 version front tool holder.

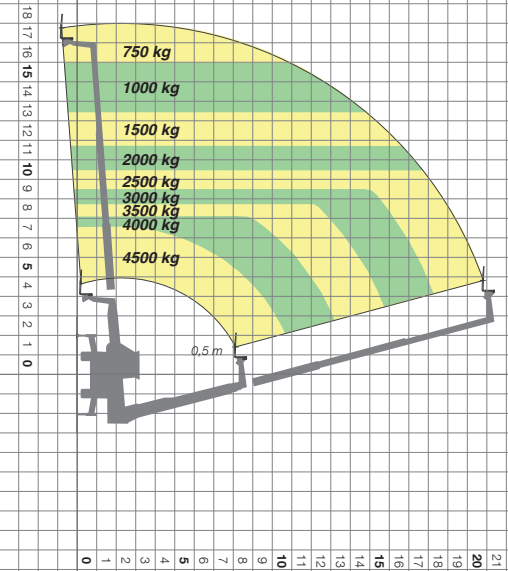
**ROTO 45.21 MCSS
SPACE SYSTEM THROUGH 360°**



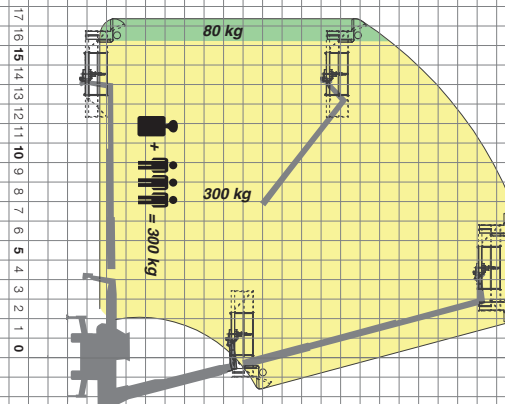
**ROTO 45.21 MCSS
WINCH THROUGH 360°**



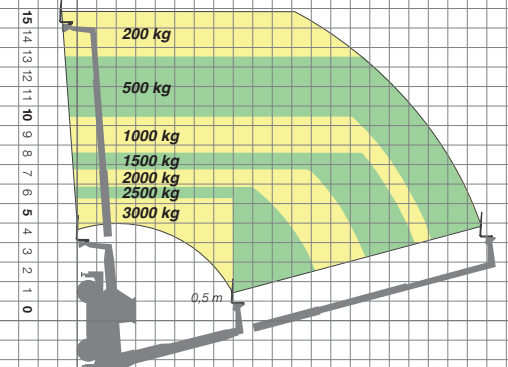
**ROTO 45.21 MCSS
FORKS ON STABILIZERS
THROUGH 360°**



**ROTO 45.21 MCSS
AERIAL WORK PLATFORM THROUGH 360°**



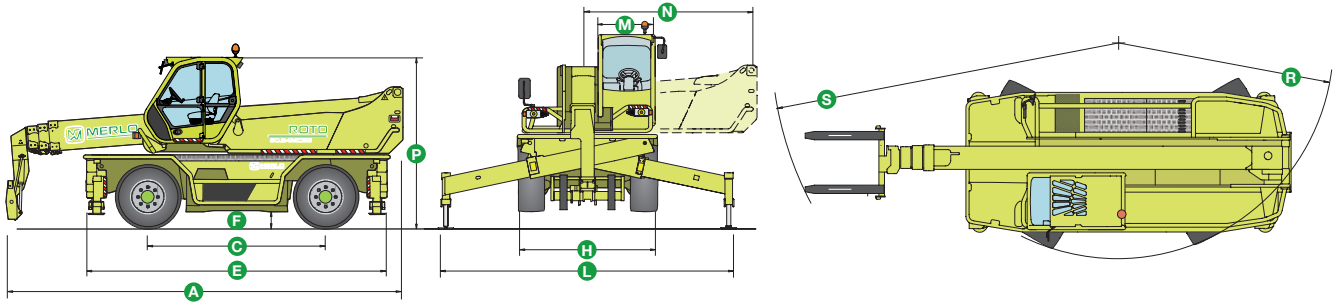
**ROTO 45.21 MCSS
FORKS ON TYRES - FRONT**



ROTO 60.24 MCSS

TECHNICAL DATA

ROTO 60.24 MCSS



- **Maximum load capacity 6000 kg**
- **Maximum lift height 23.9 metres**
- **Continuous turret rotation** achieved through a Merlo electro-hydraulic central rotary coupling
- **The cab can be tilted by up to 18 degrees** to offer an unequalled view at maximum height
- Cab steel frame complying with the international **ISO 3449 Level II FOPS** (Falling Object Protective Structure) standard
- **Pneumatic suspension seat**
- **Electronic joystick controls**
- **Steering wheel tilt** adjustable by up to 16 degrees
- **Merlin system** (Merlo Local Interactive Network) providing a completely new way to automatically manage all the operating parameters and safety functions
- **MCSS system** (Merlin Continuous Slew Safety) adjusting automatically the load diagram to suit the stabiliser position chosen by the operator
- **Stabilizers** with independent extension and jacking
- **Hydropneumatic suspension** ensuring maximum driving comfort and stability when operating on tyres, by levelling the machine
- **Iveco turbo intercooler 6 cylinder engine, delivering 129 kW (175 HP)**
- **Hydrostatic transmission** utilising variable displacement motor and pump
- **Load-sensing hydraulic pump**
- **Maximum speed 40 kph**

DIMENSIONS	60.24 MCSS
A (mm)	7430
C (mm)	3200
E (mm)	5540
F (mm)	380 ⁽¹⁾
H (mm)	2490
L (mm)	5275
M (mm)	995
N (mm)	3000
P (mm)	3100
R (mm)	4450
S (mm)	6500

CHARACTERISTICS AND PERFORMANCE	60.24 MCSS
Total weight unladen, with forks (kg)	18750
Maximum load capacity (kg)	6000
Maximum lift height (m)	23.9
Maximum forward reach (m)	20.8
Lift height at maximum load capacity (m)	12
Forward reach at maximum load capacity (m)	7
Load capacity at maximum height (kg)	3000
Load capacity at maximum forward reach (kg)	850
Turret rotation (degrees)	Continuous
Engine (make/cylinder)	Iveco/6
Tier 3 engine power (kW/HP)	129/175
Fuel capacity (l)	150
Speed in the 1 st gear (kph)	16
Speed in the 2 nd gear (kph)	40
Load-Sensing hydraulic system (bar-l/min)	240-124
Hydraulic oil capacity (l)	160
Electrical circuit (V)	12
Battery (Ah)	160
Hydraulically controlled stabilizers	● ⁽²⁾
Hydropneumatic suspension	●
Cab compliant with FOPS standards	●
Tilting cab	●
Merlin electronic control system	●
Electro-mechanical joystick controls	-
Electronic joystick controls	●
Tac-Lock attachment coupling	● ⁽³⁾
Auxiliary boom hydraulic service	●
Two floating forks (1,200 mm long)	●
Hydrostatic transmission	●
Hydrostatic oil capacity (l)	12
Finger-Touch direction reversing control	●
Permanent four-wheel drive	●
Four wheel steering	●
Service disk brakes on all wheels	●
Automatically locking parking brake	●
Tyres	445/65-22.5
Radio remote control	○
Pneumatic seat	●
Rear differential lock	○
Four cab working lights (2 f. + 2 r.)	○
Manual air conditioning system	○
Roof window wiper	○
Manual battery isolator	○
Front and roof sun shade	○

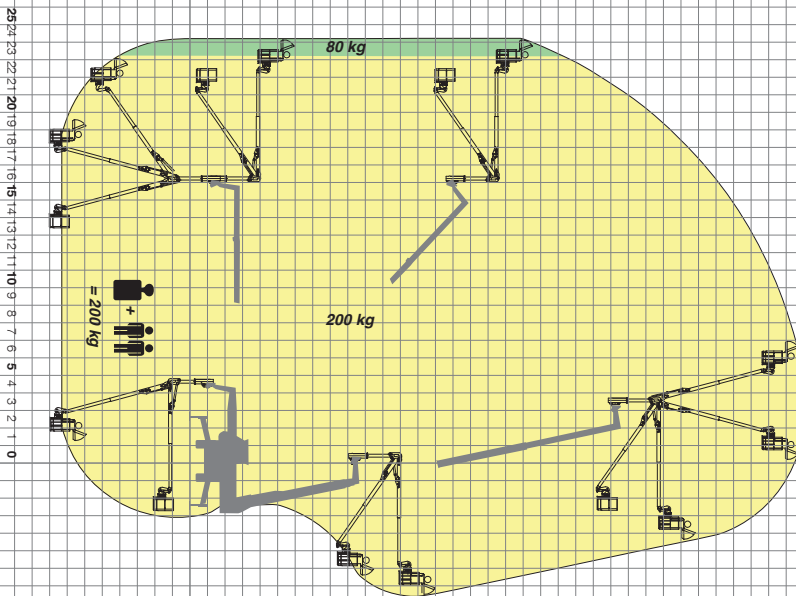
● Standard. ○ Optional.

Performance figures refer to the machine equipped with forks, operating on stabilizers.

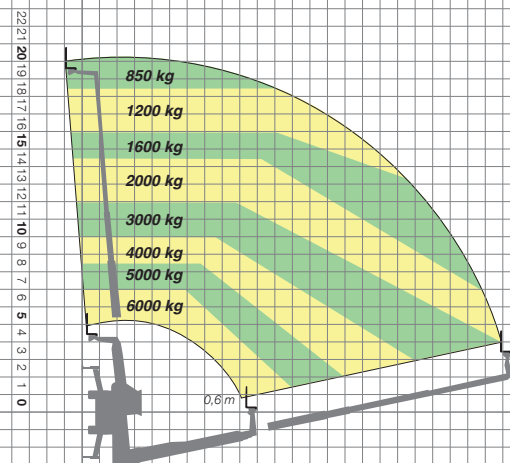
(1) Measured at suspension mid-point (± 65 mm);

(2) Stabilising and levelling can be performed automatically; (3) ZM3 version front tool holder.

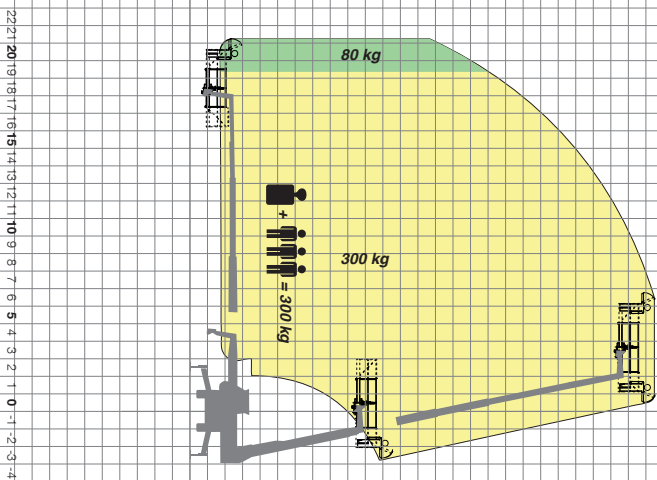
**ROTO 60.24 MCSS
SPACE SYSTEM THROUGH 360°**



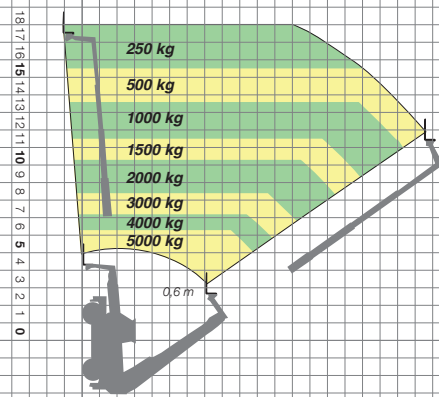
**ROTO 60.24 MCSS
FORKS ON STABILIZERS
THROUGH 360°**



**ROTO 60.24 MCSS
AERIAL WORK PLATFORM THROUGH 360°**



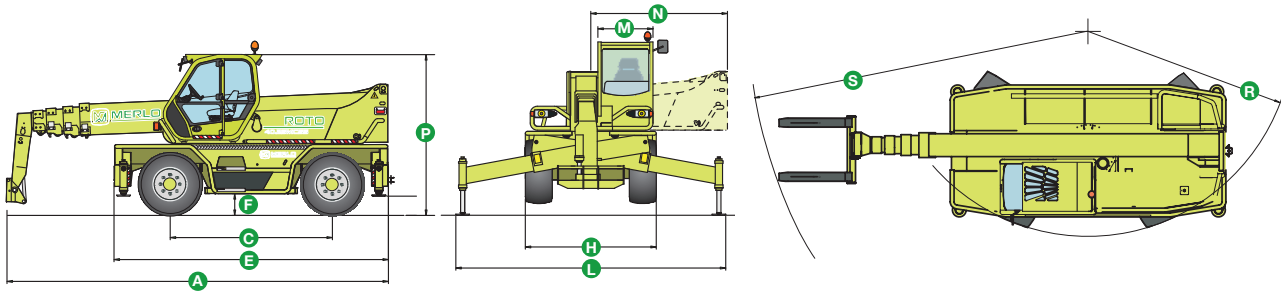
**ROTO 60.24 MCSS
FORKS ON TYRES - FRONT**



ROTO 40.26 MCSS

TECHNICAL DATA

ROTO 40.26 MCSS



- **Maximum load capacity 4000 kg**
- **Maximum lift height 26 metres**
- **Continuous turret rotation** achieved through a Merlo electro-hydraulic central rotary coupling
- **The cab can be tilted by up to 18 degrees** to offer an unequalled view at maximum height
- Cab steel frame complying with the international **ISO 3449 Level II FOPS** (Falling Object Protective Structure) standard
- **Pneumatic suspension seat**
- **Electronic joystick controls**
- **Steering wheel tilt** adjustable by up to 16 degrees
- **Merlin system** (Merlo Local Interactive Network) providing a completely new way to automatically manage all the operating parameters and safety functions
- **MCSS system** (Merlin Continuous Slew Safety) adjusting automatically the load diagram to suit the stabiliser position chosen by the operator
- **Stabilizers** with independent extension and jacking
- **Hydropneumatic suspension** ensuring maximum driving comfort and stability when operating on tyres, by levelling the machine
- **Iveco turbo intercooler 6 cylinder engine, delivering 107 kW (145 HP)**
- **Hydrostatic transmission** utilising variable displacement motor and pump
- **Load-sensing hydraulic pump**
- **Maximum speed 40 kph**

DIMENSIONS	40.26 MCSS
A (mm)	6980
C (mm)	2990
E (mm)	5030
F (mm)	330 ⁽¹⁾
H (mm)	2400
L (mm)	4950
M (mm)	995
N (mm)	2505
P (mm)	2950
R (mm)	4050
S (mm)	6580

CHARACTERISTICS AND PERFORMANCE	40.26 MCSS
Total weight unladen, with forks (kg)	16050
Maximum load capacity (kg)	4000
Maximum lift height (m)	26
Maximum forward reach (m)	22.9
Lift height at maximum load capacity (m)	13.6
Forward reach at maximum load capacity (m)	8.2
Load capacity at maximum height (kg)	1500
Load capacity at maximum forward reach (kg)	150
Turret rotation (degrees)	Continuous
Engine (make/cylinder)	Iveco/6
Tier 3 engine power (kW/HP)	107/145
Fuel capacity (l)	150
Speed in the 1 st gear (kph)	16
Speed in the 2 nd gear (kph)	40
Load-Sensing hydraulic system (bar-l/min)	240-108
Hydraulic oil capacity (l)	160
Electrical circuit (V)	12
Battery (Ah)	160
Hydraulically controlled stabilizers	●
Hydropneumatic suspension	●
Cab compliant with FOPS standards	●
Tilting cab	●
Merlin electronic control system	●
Electro-mechanical joystick controls	-
Electronic joystick controls	●
Tac-Lock attachment coupling	● ⁽²⁾
Auxiliary boom hydraulic service	●
Two floating forks (1,200 mm long)	●
Hydrostatic transmission	●
Hydrostatic oil capacity (l)	12
Finger-Touch direction reversing control	●
Permanent four-wheel drive	●
Four wheel steering	●
Service disk brakes on all wheels	●
Automatically locking parking brake	●
Tyres	18-22.5
Radio remote control	○
Pneumatic seat	●
Rear differential lock	○
Four cab working lights (2 f. + 2 r.)	○
Manual air conditioning system	○
Roof window wiper	○
Manual battery isolator	○
Front and roof sun shade	○

● Standard. ○ Optional.

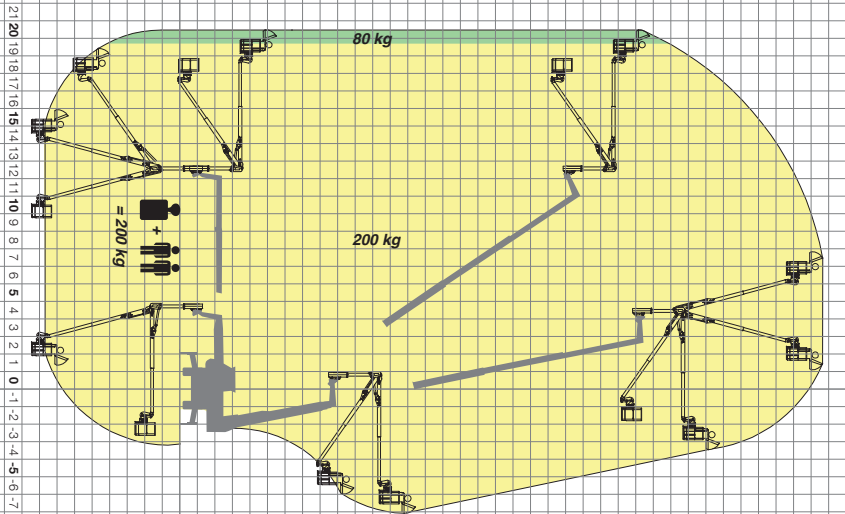
Performance figures refer to the machine equipped with forks, operating on stabilizers.

(1) Measured at suspension mid-point (± 65 mm);

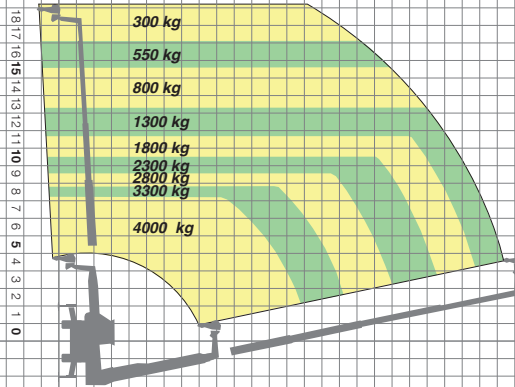
(2) ZM2 version front tool holder.

Courtesy of Crane.Market

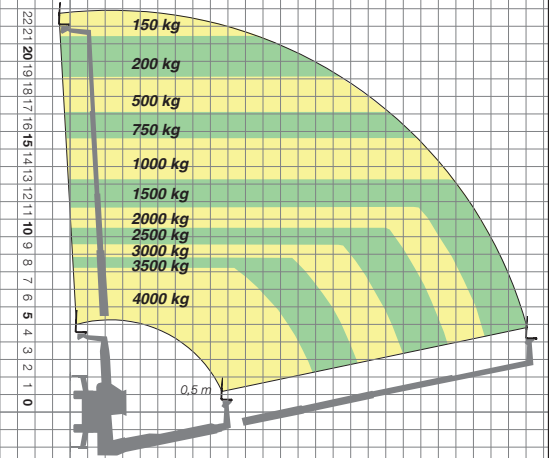
**ROTO 40.26 MCSS
SPACE SYSTEM THROUGH 360°**



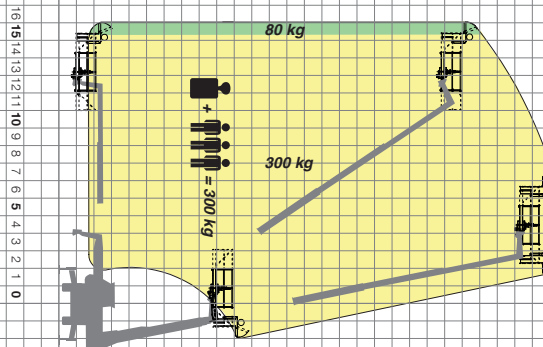
**ROTO 40.26 MCSS
WINCH THROUGH 360°**



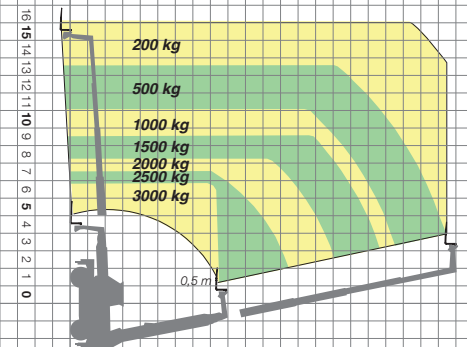
**ROTO 40.26 MCSS
FORKS ON STABILIZERS
THROUGH 360°**



**ROTO 40.26 MCSS
AERIAL WORK PLATFORM THROUGH 360°**



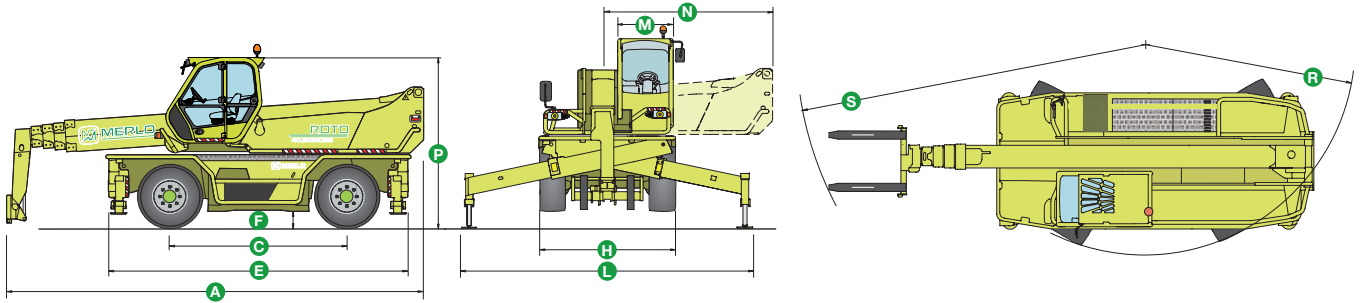
**ROTO 40.26 MCSS
FORKS ON TYRES - FRONT**



ROTO 40.30 MCSS

TECHNICAL DATA

ROTO 40.30 MCSS



- Maximum load capacity **4000 kg**
- Maximum lift height **29.5 metres**
- **Continuous turret rotation** achieved through a Merlo electro-hydraulic central rotary coupling
- **The cab can be tilted by up to 18 degrees** to offer an unequalled view at maximum height
- Cab steel frame complying with the international **ISO 3449 Level II FOPS** (Falling Object Protective Structure) standard
- **Pneumatic suspension seat**
- **Electronic joystick controls**
- **Steering wheel tilt** adjustable by up to 16 degrees
- **Merlin system** (Merlo Local Interactive Network) providing a completely new way to automatically manage all the operating parameters and safety functions
- **MCSS system** (Merlin Continuous Slew Safety) adjusting automatically the load diagram to suit the stabiliser position chosen by the operator
- **Stabilizers** with independent extension and jacking
- **Hydropneumatic suspension** ensuring maximum driving comfort and stability when operating on tyres, by levelling the machine
- **Iveco turbo intercooler 6 cylinder engine, delivering 129 kW (175 CV)**
- **Hydrostatic transmission** utilising variable displacement motor and pump
- **Load-sensing hydraulic pump**
- Maximum speed **40 kph**

DIMENSIONS	40.30 MCSS
A (mm)	7560
C (mm)	3200
E (mm)	5540
F (mm)	380 ⁽¹⁾
H (mm)	2490
L (mm)	5275
M (mm)	995
N (mm)	3000
P (mm)	3100
R (mm)	4450
S (mm)	6700

CHARACTERISTICS AND PERFORMANCE	40.30 MCSS
Total weight unladen, with forks (kg)	19200
Maximum load capacity (kg)	4000
Maximum lift height (m)	29.5
Maximum forward reach (m)	25.5
Lift height at maximum load capacity (m)	19.4
Forward reach at maximum load capacity (m)	10.5
Load capacity at maximum height (kg)	1500
Load capacity at maximum forward reach (kg)	400
Turret rotation (degrees)	Continuous
Engine (make/cylinder)	Iveco/6
Tier 3 engine power (kW/HP)	129/175
Fuel capacity (l)	150
Speed in the 1 st gear (kph)	16
Speed in the 2 nd gear (kph)	40
Load-Sensing hydraulic system (bar-l/min)	240-124
Hydraulic oil capacity (l)	160
Electrical circuit (V)	12
Battery (Ah)	160
Hydraulically controlled stabilizers	● ⁽²⁾
Hydropneumatic suspension	●
Cab compliant with FOPS standards	●
Tilting cab	●
Merlin electronic control system	●
Electro-mechanical joystick controls	-
Electronic joystick controls	●
Tac-Lock attachment coupling	● ⁽³⁾
Auxiliary boom hydraulic service	●
Two floating forks (1,200 mm long)	●
Hydrostatic transmission	●
Hydrostatic oil capacity (l)	12
Finger-Touch direction reversing control	●
Permanent four-wheel drive	●
Four wheel steering	●
Service disk brakes on all wheels	●
Automatically locking parking brake	●
Tyres	445/65-22.5
Radio remote control	○
Pneumatic seat	●
Rear differential lock	○
Four cab working lights (2 f. + 2 r.)	○
Manual air conditioning system	○
Roof window wiper	○
Manual battery isolator	○
Front and roof sun shade	○

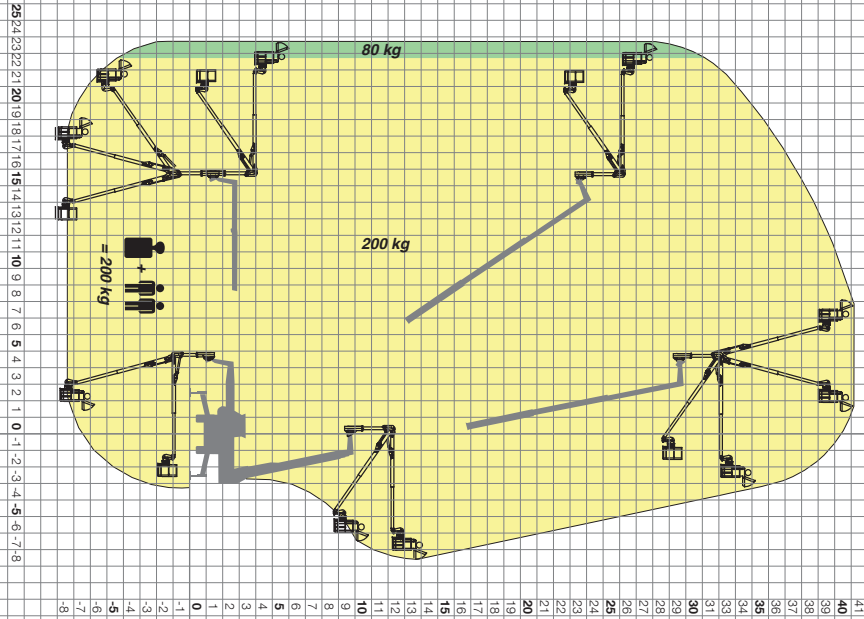
● Standard. ○ Optional.

Performance figures refer to the machine equipped with forks, operating on stabilizers.

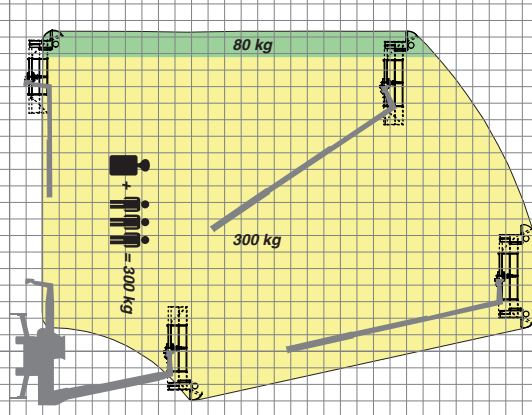
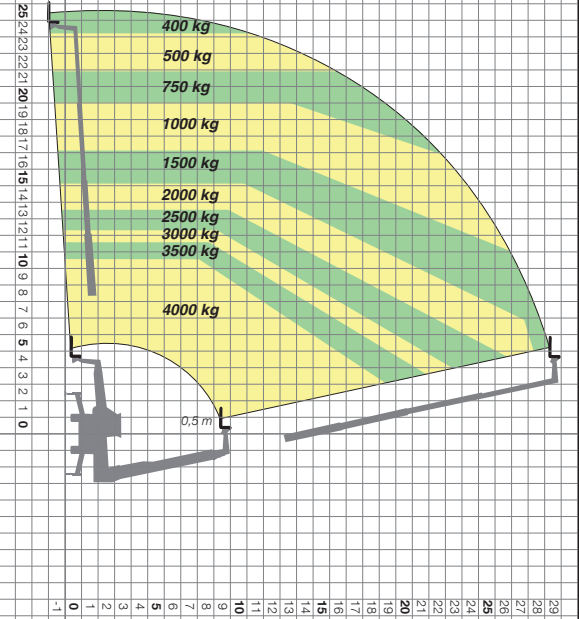
(1) Measured at suspension mid-point (± 65 mm);

(2) Stabilising and levelling can be performed automatically; (3) ZM2 version front tool holder.

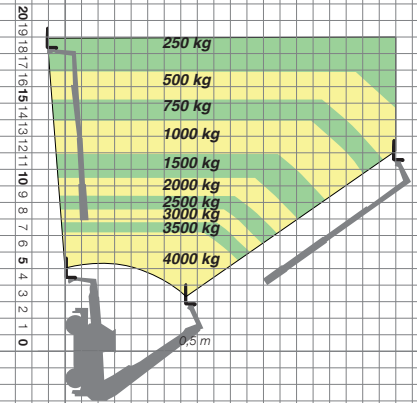
**ROTO 40.30 MCSS
SPACE SYSTEM THROUGH 360°**



**ROTO 40.30 MCSS
FORKS ON STABILIZERS THROUGH 360°**



**ROTO 40.30 MCSS
AERIAL WORK PLATFORM THROUGH 360°**



**ROTO 40.30 MCSS
FORKS ON TYRES - FRONT**





The Merlo telehandlers described in this document may feature optional or special equipments which are not part of the standard equipment and are supplied upon request. Not all models or versions are available in all countries, due to regulatory restrictions.

Information and technical data are those available at the time of printing.

Merlo reserves the right to modify and update the contents of this document following technological evolution.

For further information on models and their equipment please contact your Merlo dealer.

MARKT MERLO • U 463 XG 0212



MERLO S.P.A.

Via Nazionale, 9 - 12010 S. Defendente di Cervasca - Cuneo - Italia

Tel. +39 0171 614111 - Fax +39 0171 684101

www.merlo.com - info@merlo.com