

TF NI9 A-6x1500

PRODUCT LINE: LIGHTING KIT

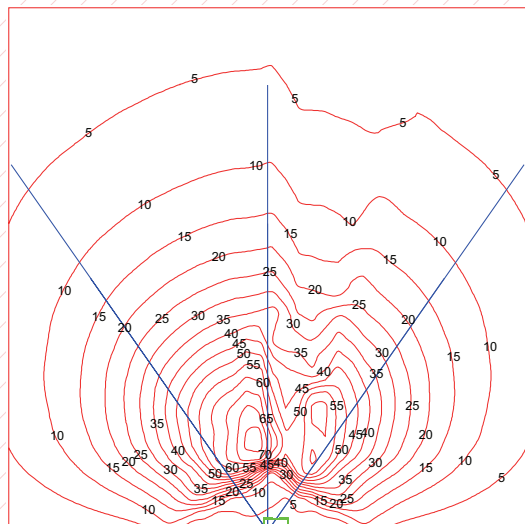
CHARACTERISTICS:

- 9m zinc plated telescopic mast
- Hydraulic raise/lower
- 340 degrees manual rotation of the tower
- Certified wind proof up to 80Km/h (*)
- 6 x halogen lamps of 1500 W
- Two axes manually adjustable floodlights
- Illuminated area 4200mq
- Switches for lamps
- Site tow trailer structure
- 2 x pneumatic wheels with mudguards

- Safety lock
- 4 x adjustable stabilisers, two extendable
- Lifting hooks and forklift pockets
- Frame prepared for installing a generating set from 8 to 20 kVA
- Weight: 790 kg (excluding the generator)
- Dimensions without drawbar (L x l x h): 2405 x 1410 x 2240 mm
- Dimensions with drawbar (L x l x h): 3915 x 1410 x 2240 mm
- Compliant with EC Directives

(*) applicable to trailer loaded with generator having weight ≥ 210 kg

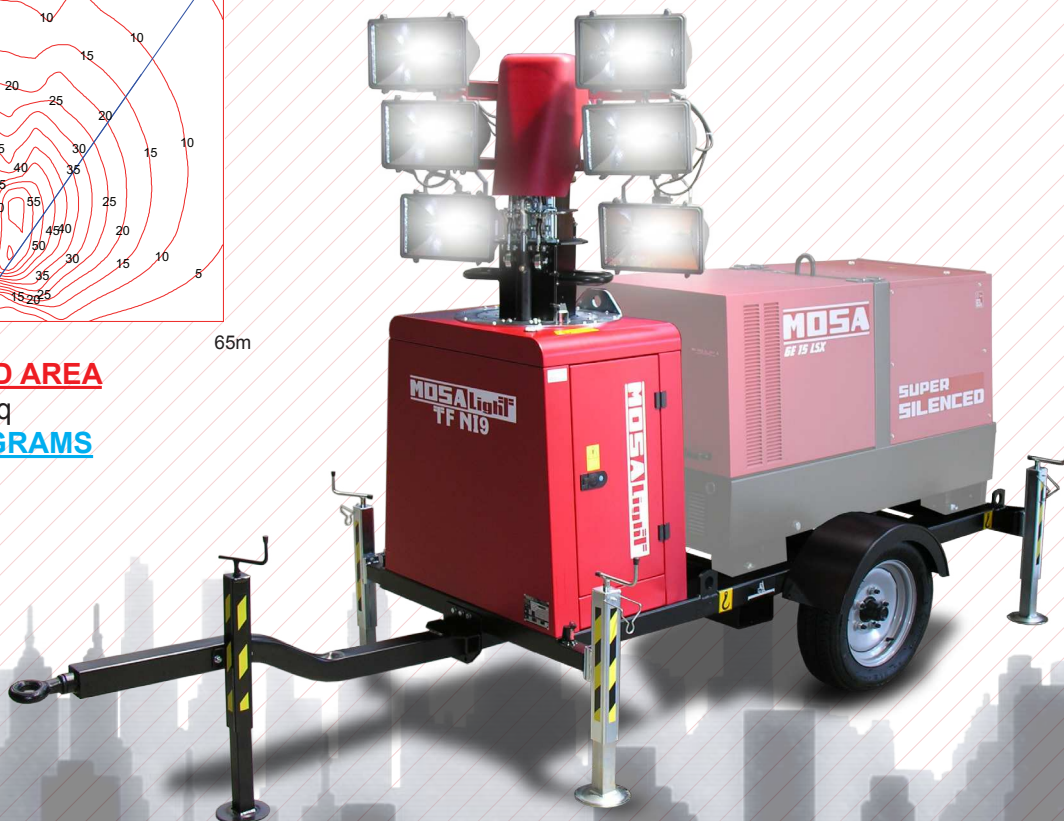
65m



0

65m

ILLUMINATED AREA
4200Mq
ISOLUX DIAGRAMS



Mosa reserves the right to change this specification without notice. For further information please contact the sales department.