

NATIONAL CRANE

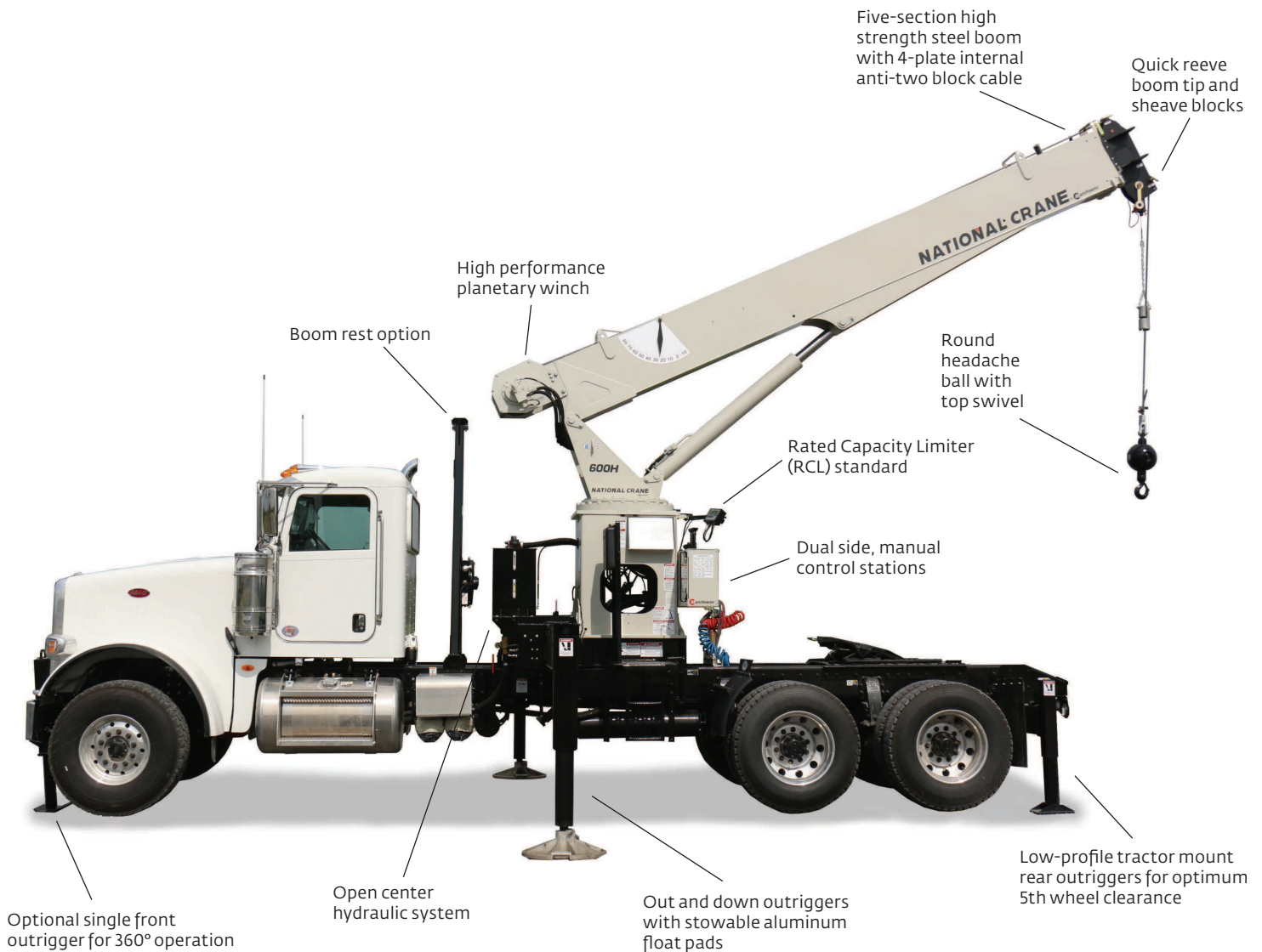
by **Manitowoc**


680H-TM

Capacity: 18,1 t (20 USt)

Boom: 24,4 m (80 ft) five-section boom,
three additional boom length options

Max tip height main boom: 26,8 m (88ft)



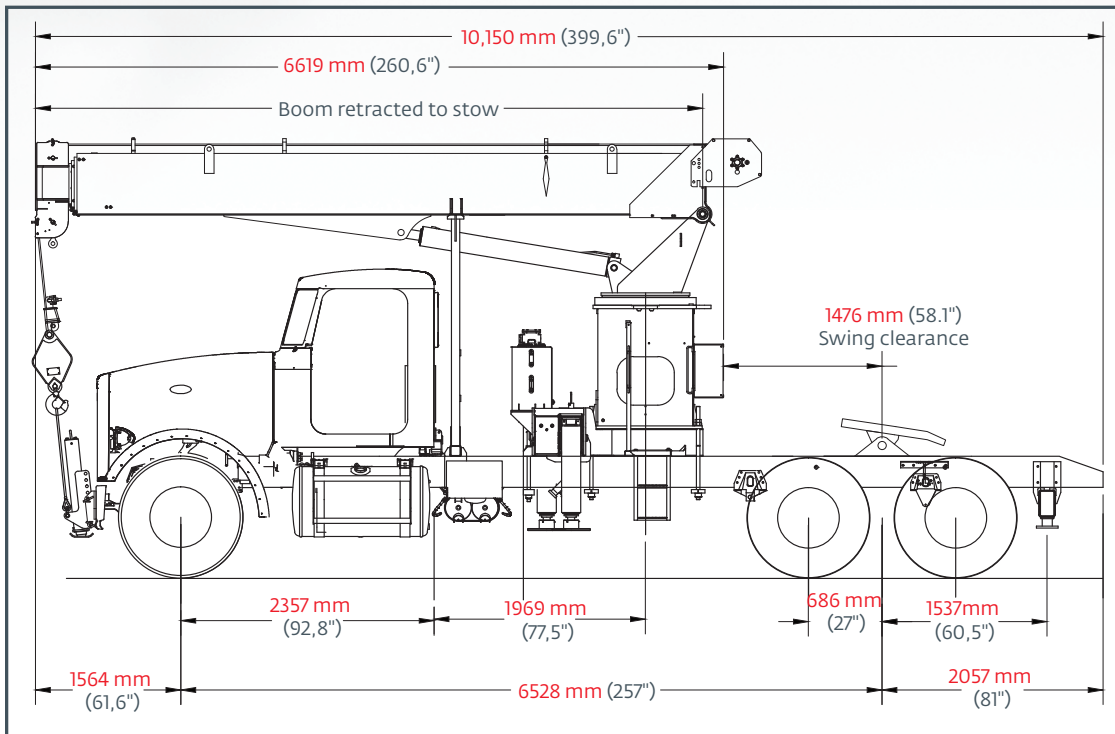
 Contact your local dealer for more information, locate one at www.manitowoccranes.com/dealers

Courtesy of Crane.Market

Four tractor mount boom length options

Boom	Sections	Jib	Maximum tip height
4,9 m - 11,6 m (16 ft - 38 ft)	3	No	14,63 m (48 ft)
4,95 m - 14,9 m (16.3 ft - 49 ft)	4	No	17,98 m (59 ft)
7,3 m - 18,3 m (24 ft - 60 ft)	3	No	21,3 m (70 ft)
6,3 m - 24,4 m (20.6 ft - 80ft)	5	No	26,8 m (88 ft)

Dimensions

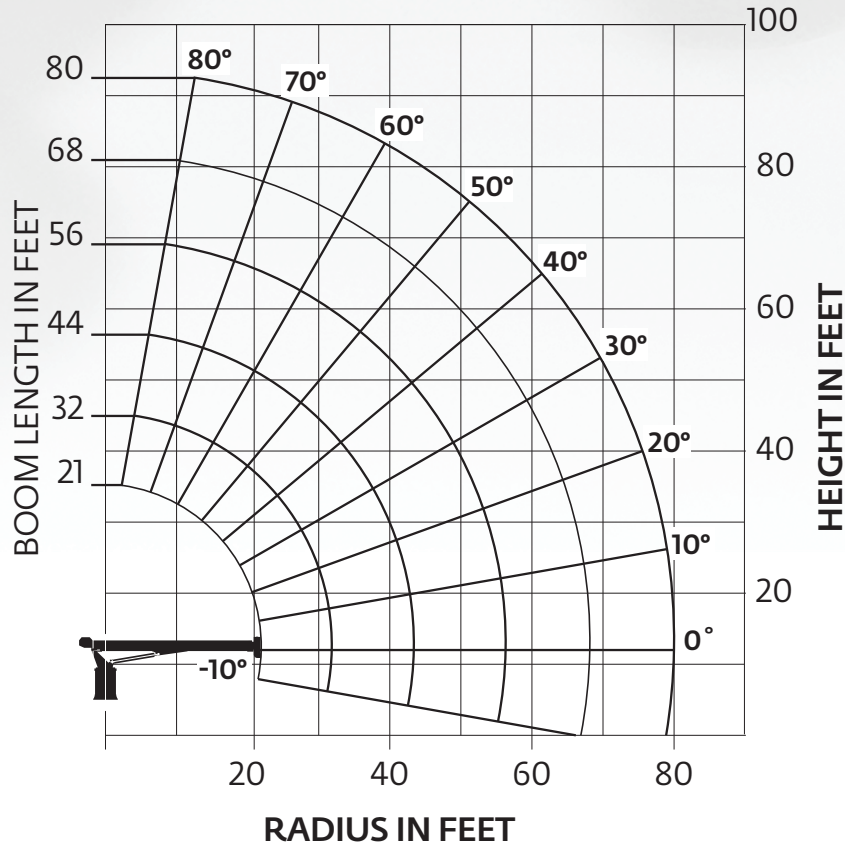


	Font Axle	Rear Axle
Bare truck	4967 kg (10,950 lb)	4409 kg (9720 lb)
Finished truck	8800 kg (19,400 lb)	7947 kg (17,520 lb)

*Finished weights do not include a driver or passenger in the truck cab

Working range

80 ft boom (no jib)



Load chart

80 ft boom (no jib), full-span outriggers and full-span rear stabilizers

LOADED RADIUS (ft)	LOADED BOOM ANGLE (deg)	21 FT BOOM (lb)	LOADED BOOM ANGLE (deg)	32 FT BOOM (lb)	LOADED BOOM ANGLE (deg)	44 FT BOOM (lb)	LOADED BOOM ANGLE (deg)	56 FT BOOM (lb)	LOADED BOOM ANGLE (deg)	68 FT BOOM (lb)	LOADED BOOM ANGLE (deg)	80 FT BOOM (lb)
5	73	40,000										
8	64	27,000	74	18,000								
10	57.5	21,400	70	18,000	76	16,500						
12	51	18,450	66	18,000	73.5	16,500	77.5	13,200				
14	43.5	16,400	62	16,400	71	16,500	75.5	13,200	80	10,700		
16	34	14,750	57.5	14,750	67.5	14,750	73.5	12,600	78	10,100	79	6800
20			48.5	11,250	61	11,400	69	11,150	74	9250	76	5600
25			34.5	8900	53.5	9150	63	9150	69	8100	72	5100
30					45	7200	56.5	7200	64.5	7200	68.5	4400
35					34.5	6400	50.5	6400	59.5	6400	64.5	3850
40					20	5300	43	5150	54	5000	60	3400
45							35	4150	48	4000	56	2950
50							24	3400	42	3250	51.5	2600
55									35.5	2650	46.5	2300
60									27	2250	41	1950
65									13	1900	35	1650
70											29	1400
75											18	1200
	0	7500	0	5000	0	3900	0	2400	0		0	1200

Benefits

Versatility

- **NEW!** 24,4 m (80 ft) five-section boom
- Shortest overall length for mobility
- Standard Rated Capacity Limiter (RCL) with Work Area Definition (WADS) Alert System

Features

- Proven, reliable design
- Fast boom speeds and quick set up time
- Quick reeve rigging (decreases rigging time)
- Adjustable swing speed

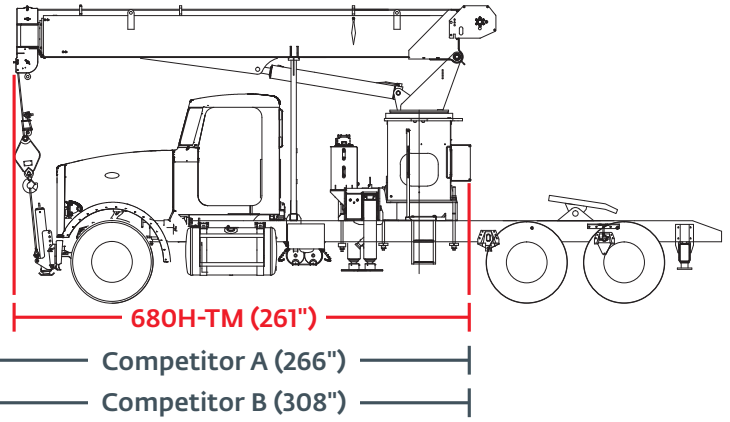
Capacity

- 18,1 t (20 USt) maximum capacity



Outriggers

- Equipped with an outrigger in-motion alarm and Outrigger Monitoring System
- Optional single front outrigger to allow 360° area of operation
- Multiple outrigger positions with removable aluminum floats for working in tight spaces; 6,1 m (20 ft) full-span, 4,3 m (14 ft) mid-span and fully retracted
- Compact rear stabilizers with 2,44 m (8 ft) span



Options and Lift Solutions

- Duty cycle package with Burst of Speed winch and oil cooler
- Hydraulic hose reels
- Radio remote controls



Winch

- 14 mm (9/16 in) rotation resistant wire rope with 3492 kg (7700 lb) single-line pull

