

# National Crane 9103A

## Quick Reference

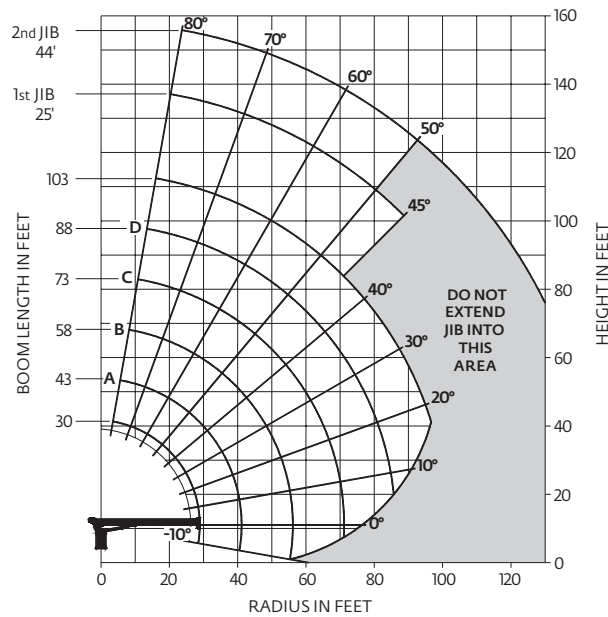
**Capacity:** 23,6 t (26 USt) rating

**Boom:** 31,4 m (103 ft)

• 34,44 m (113 ft) maximum tip height (main boom)

• 47,24 m (155 ft) maximum tip height main boom and 13,41 m (44 ft) jib

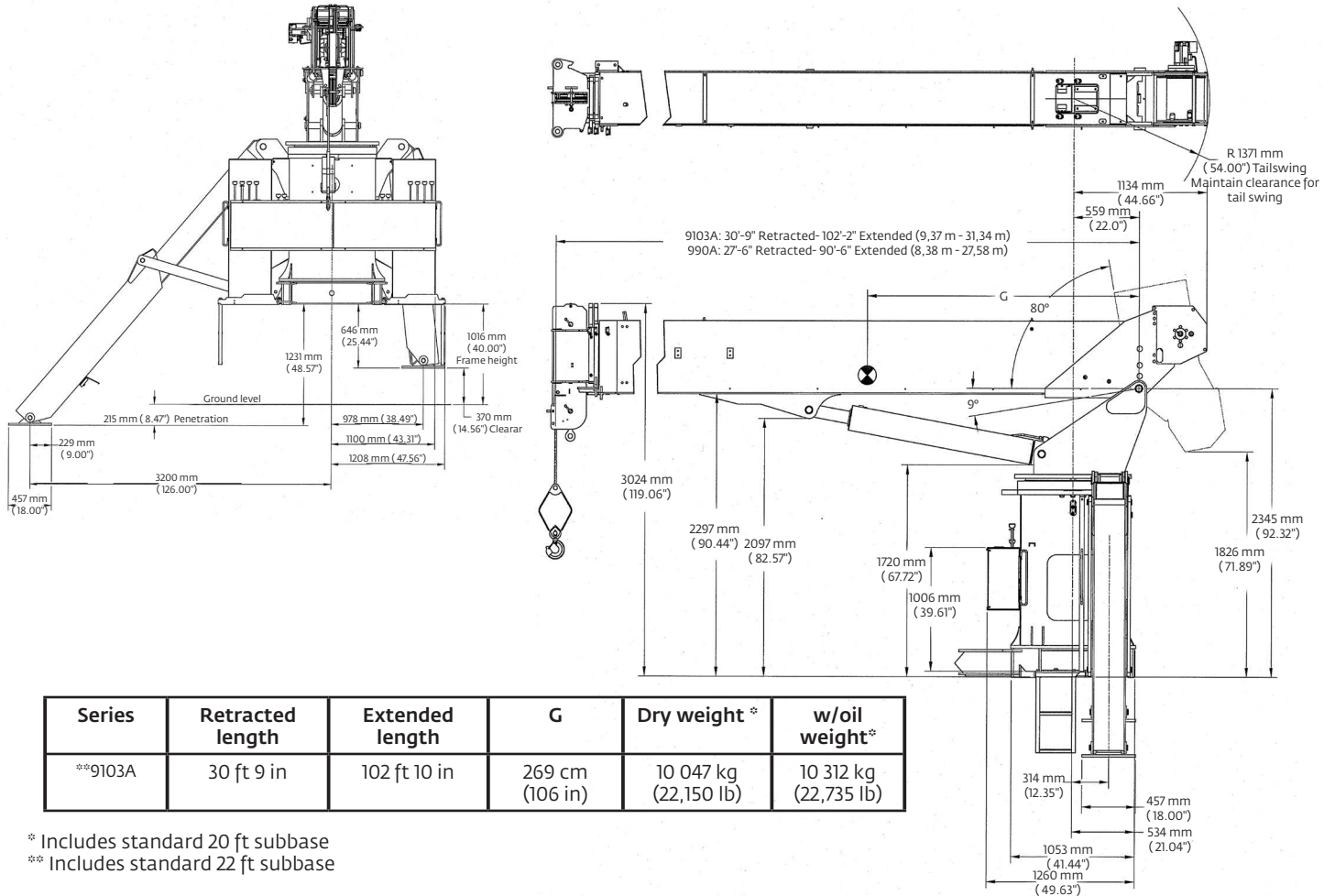
**Working range: 103 ft main boom, full span outrigger, with 44 ft jib**



**Load chart: 103 ft main boom, full span outrigger, with 44 ft jib**

| LOAD RADIUS (FEET)                        | LOADED BOOM ANGLE | 30 ft BOOM (lb) | LOADED BOOM ANGLE | A 43 ft BOOM (lb) | LOADED BOOM ANGLE | B 58 ft BOOM (lb) | LOADED BOOM ANGLE | C 73 ft BOOM (lb) | LOADED BOOM ANGLE | D 88 ft BOOM (lb) | LOADED BOOM ANGLE | 103 ft BOOM (lb) | LOAD RADIUS (FEET) | LOADED BOOM ANGLE | 25 ft JIB (lb) | LOADED BOOM ANGLE | 44 ft JIB (lb) |
|-------------------------------------------|-------------------|-----------------|-------------------|-------------------|-------------------|-------------------|-------------------|-------------------|-------------------|-------------------|-------------------|------------------|--------------------|-------------------|----------------|-------------------|----------------|
| 5                                         | 78.5              | 52,000          |                   |                   |                   |                   |                   |                   |                   |                   |                   |                  | 30                 | 76.5              | 3950           |                   |                |
| 8                                         | 72.5              | 34,850          |                   |                   |                   |                   |                   |                   |                   |                   |                   |                  | 35                 | 74.5              | 3450           | 76.5              | 2550           |
| 10                                        | 68.5              | 29,050          | 75.5              | 26,400            | 80                | 24,950            |                   |                   |                   |                   |                   |                  | 40                 | 72                | 3050           | 75                | 2500           |
| 12                                        | 64.5              | 24,750          | 72.5              | 22,500            | 78                | 21,250            |                   |                   |                   |                   |                   |                  | 45                 | 70                | 2600           | 73                | 2450           |
| 14                                        | 60                | 21,250          | 69.5              | 19,600            | 76                | 19,350            | 79.5              | 17,750            |                   |                   |                   |                  | 50                 | 67.5              | 2250           | 71                | 2250           |
| 16                                        | 55.5              | 18,950          | 67                | 17,300            | 74                | 16,350            | 78                | 15,350            | 80                | 14,300            |                   |                  | 55                 | 65                | 1950           | 69                | 1850           |
| 20                                        | 45                | 14,350          | 60.5              | 14,000            | 69                | 13,750            | 74                | 12,650            | 77.5              | 11,700            | 80                | 10,550           | 60                 | 62.5              | 1800           | 67                | 1650           |
| 25                                        |                   |                 | 52                | 10,800            | 63.5              | 10,550            | 70                | 10,150            | 74                | 9400              | 77                | 9100             | 65                 | 60                | 1550           | 64.5              | 1350           |
| 30                                        |                   |                 | 42.5              | 8500              | 57.5              | 8500              | 65.5              | 8350              | 70.5              | 7750              | 74.5              | 7150             | 70                 | 57.5              | 1300           | 62.5              | 1200           |
| 35                                        |                   |                 | 32.5              | 6500              | 52.5              | 6900              | 62                | 6800              | 67.5              | 6400              | 71.5              | 6050             | 75                 | 54.5              | 1100           | 60                | 1050           |
| 40                                        |                   |                 |                   |                   | 45.5              | 5650              | 57                | 5600              | 64                | 5450              | 68.5              | 5150             | 80                 | 51.5              | 900            | 58                | 950            |
| 45                                        |                   |                 |                   |                   | 38                | 4500              | 52                | 4700              | 60                | 4600              | 65.5              | 4500             | 85                 | 48.5              | 700            | 55.5              | 900            |
| 50                                        |                   |                 |                   |                   | 28                | 3450              | 46.5              | 3950              | 56                | 3950              | 62                | 3900             | 90                 | 45.5              | 450            | 53                | 750            |
| 55                                        |                   |                 |                   |                   |                   |                   | 40.5              | 3150              | 52                | 3300              | 59                | 3350             | 95                 |                   |                | 50.5              | 600            |
| 60                                        |                   |                 |                   |                   |                   |                   | 34                | 2550              | 47.5              | 2750              | 55.5              | 2900             |                    |                   |                |                   |                |
| 65                                        |                   |                 |                   |                   |                   |                   |                   |                   | 42.5              | 2200              | 52                | 2450             |                    |                   |                |                   |                |
| 70                                        |                   |                 |                   |                   |                   |                   |                   |                   | 37.5              | 1750              | 48                | 2050             |                    |                   |                |                   |                |
| 75                                        |                   |                 |                   |                   |                   |                   |                   |                   | 31                | 1350              | 44                | 1650             |                    |                   |                |                   |                |
| 80                                        |                   |                 |                   |                   |                   |                   |                   |                   |                   |                   | 39.5              | 1250             |                    |                   |                |                   |                |
| 85                                        |                   |                 |                   |                   |                   |                   |                   |                   |                   |                   | 34.5              | 900              |                    |                   |                |                   |                |
| 0                                         |                   | 4500            | 0                 | 2200              | 0                 | 800               |                   |                   |                   |                   |                   |                  |                    |                   |                |                   |                |
| ADD TO CAPACITIES WHEN NO JIB STOWED (lb) |                   | 850             |                   | 600               |                   | 450               |                   | 350               |                   | 300               |                   | 250              |                    |                   |                |                   |                |

## Dimensions



\* Includes standard 20 ft subbase  
 \*\* Includes standard 22 ft subbase

*More information about this product can be found in the National Crane Series 900A Product Guide.*

## Specifications

### Boom

Comes equipped with a 31,4 m (103 ft) four-section boom. This model can be equipped with a 13,41 m (44 ft) two-section jib.

### Outriggers

"A" frame main outriggers with a 21ft span. RSOD 16 ft out and down, rear stabilizers for standard behind-cab mount.

### Overload protection

National Crane boom trucks are equipped with overload protection. A Load Moment Indicator (LMI) is standard on all 900A machines. The LCD display is visible in full or low light and displays all crane load lifting values simultaneously. Includes Work Area Definition System (WADS).

### Torsion box

The stronger standard torsion box improves rigidity, reduces truck frame flex and reduces the need for counterweight.

### Easy Glide Boom Wear Pads

Easy Glide boom wear pads reduce the conditions that cause boom chatter and vibration. The net result is smoother crane operation.

### Speedy-reeve boom tip and sheave blocks

These standard features simplify rigging changes by decreasing the time needed to change line reeving.

### Pre-painted components

Painting crane components before assembly reduces the possibility of rust, improves serviceability and enhances the appearance of the machine.

### Control valve

State of the art control valve provides smoother operation. The design eliminates parts, reducing repair costs and improving the machines serviceability.

### Serviceability

- Bearings on the boom extend and retract cables can be greased through access holes in the boom side plates
- Boom sections are supported by one hydraulic extend cylinder, minimizing maintenance