

PK 36002

Performance

PALFINGER CRANE



THE STRONG UNIVERSAL TALENT



A PERFECT WORKING UNIT WITH CLEVERLY DESIGNED KINEMATICS

The PK 36002 *Performance* stands out by virtue of its enormous lifting power and extremely low weight. This translates into a high payload and extremely good cost-efficiency. Equipped with a wide range of accessories it handles unit loads just as efficiently as assembly work. It is in any event a strong partner!



**WELL SUPPORTED BY MORE THAN 1500 PALFINGER
CONTRACT PARTNERS WORLDWIDE**



Internally routed oil ducts

The internally routed oil ducts permit a compact design for the extension system and ensure perfect protection from damage.

Return oil utilisation

The high speed of the extension system is impressive. It results from return oil utilisation, which is installed as standard, and the generously dimensioned hydraulic lines. This makes for increased efficiency in any type of working!

Hose equipment for accessories

With this option you can provide the oil supply to accessories. The hoses are routed in compact troughs and plastic link chains. They are therefore optimally protected.

Load-holding valves

They prevent the crane arm from dropping and are fitted as standard onto the slewing mechanism, lifting and boom extension cylinders. The valves are positioned in such a way that they are protected from being damaged.

Advanced Package

- Oil cooler mounted
- Electronic HPLS
- Capacity display on control console
- PALFINGER radio control
- PALTRONIC 50
- Functional Design
- Load Sensing operation

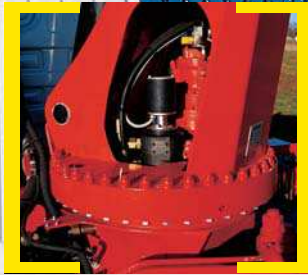


LEAVES NOTHING TO BE DESIRED



Functional Design

- Cover for the control valve area
- Covering for the hoses behind the crane column
- Outrigger system with internally routed hydraulic hoses



Endless slewing mechanism

The standard endless slewing mechanism provides an unrestricted action radius. As a result the crane operates much more quickly and cost-efficiently.



Outrigger System

The standard 6 m outriggers ensure optimum stability. If required 7.4 m telescopic outriggers are available. Upon request the crane can be supplied with patented support cylinders which can be swivelled up hydraulically 180°. The control valves for the crane and additional outrigger support are mounted as standard onto the base frame. The switchover between crane and outrigger control takes place electrically. Bubble level and hour counter are mounted in the support control valve console.

Control valve

In combination with the PALFINGER radio control system the load sensing proportional valve enables the crane to be adjusted very slightly.

POWER LINK PLUS

This hinged arm specially developed by PALFINGER can be angled upwards and exhibits outstanding movement geometry. Even in unfavourable site conditions heavy crane work can be carried out without any problems.

AOS

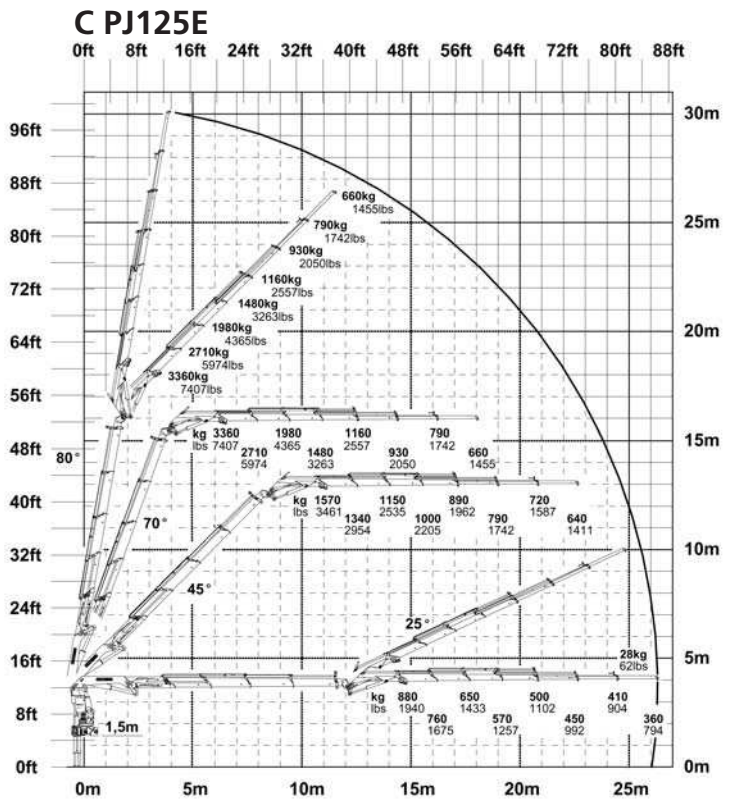
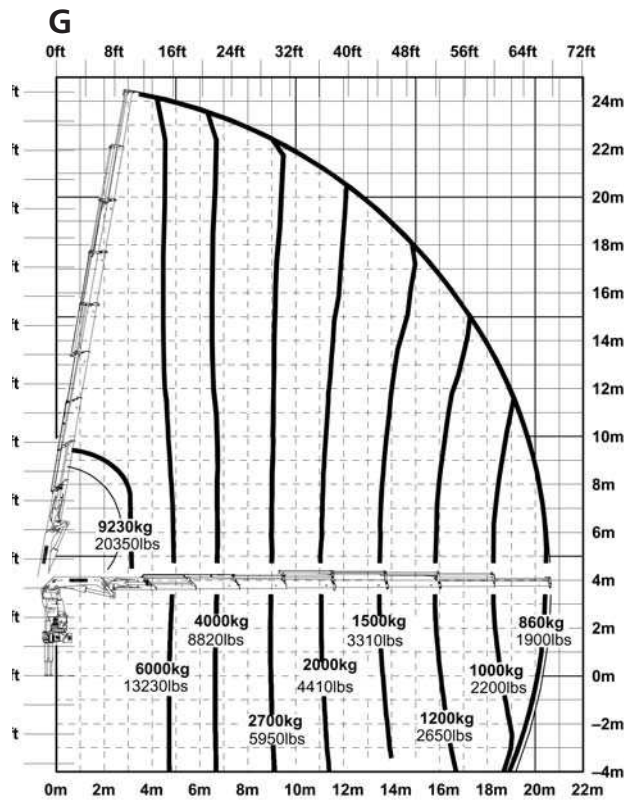
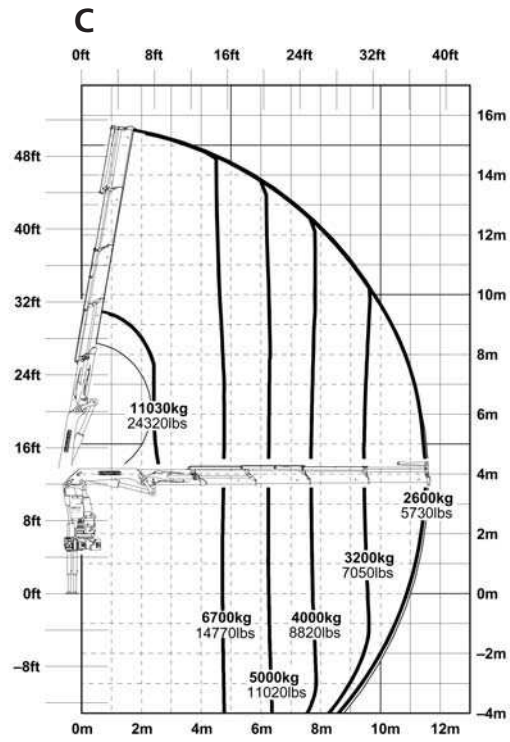
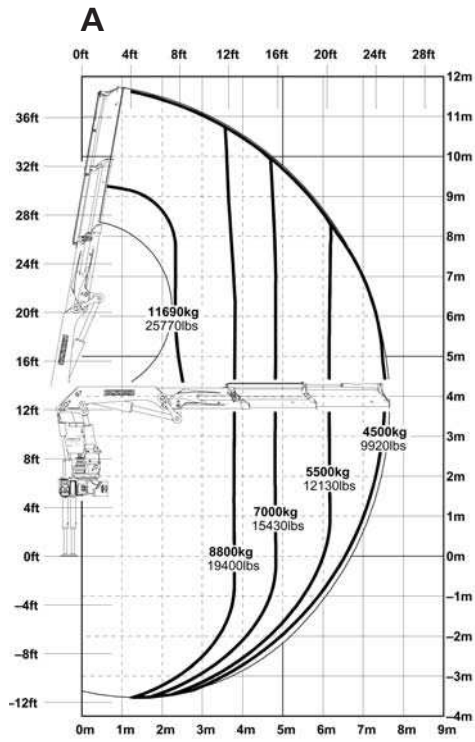
The Active Oscillation Suppression system patented by PALFINGER neutralises the jolts and sudden load changes that arise in crane operation. Because oscillations are eradicated, the crane can work with pin-point accuracy, much more quickly and therefore more cost-efficiently.



KTL – the cathodic dip painting

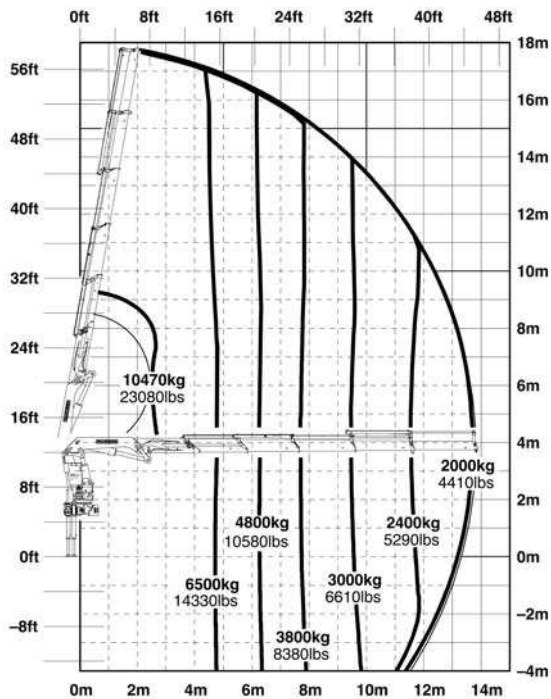
The shot-blasted crane parts are covered in zinc phosphate in an immersion process and coated electrostatically. The subsequent two-component top coating of paint provides a surface protection which in the past was usually only found in the automotive industry.

IDEAL MATCHING TO ANY JOB

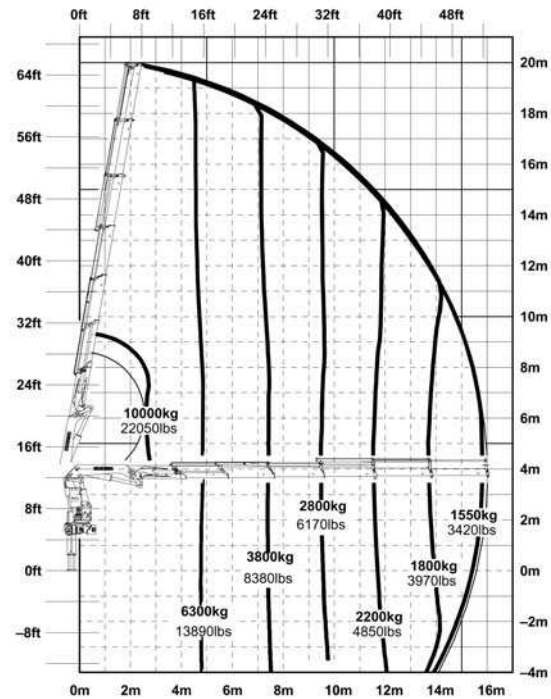


WITH ADDITIONAL HINGED ARMS AND UP TO 8 HYDRAULIC EXTENSIONS

D

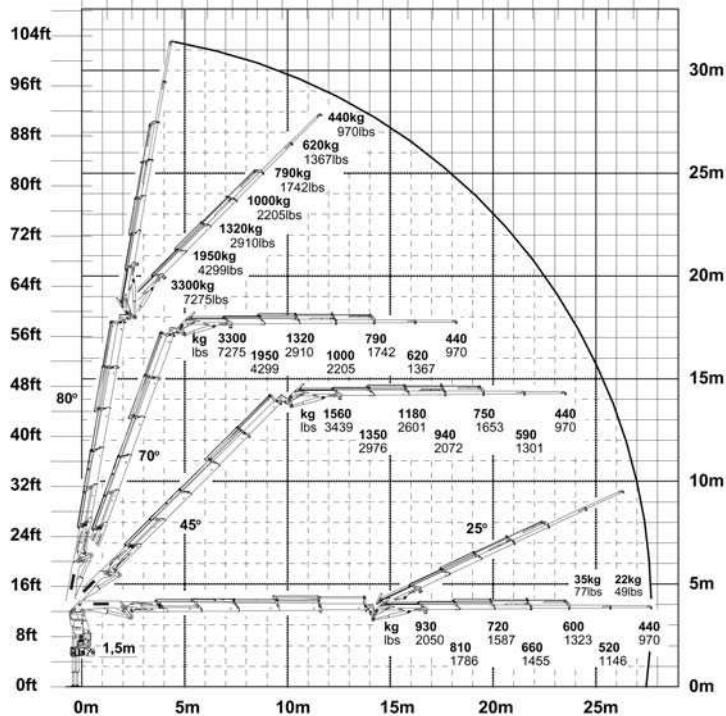


E



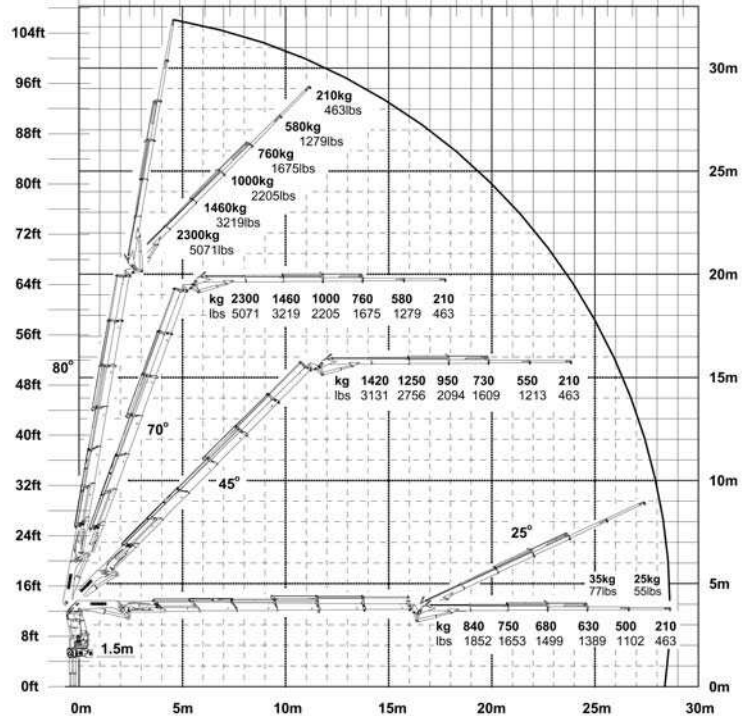
D PJ080C

0ft 8ft 16ft 24ft 32ft 40ft 48ft 56ft 64ft 72ft 80ft 88ft



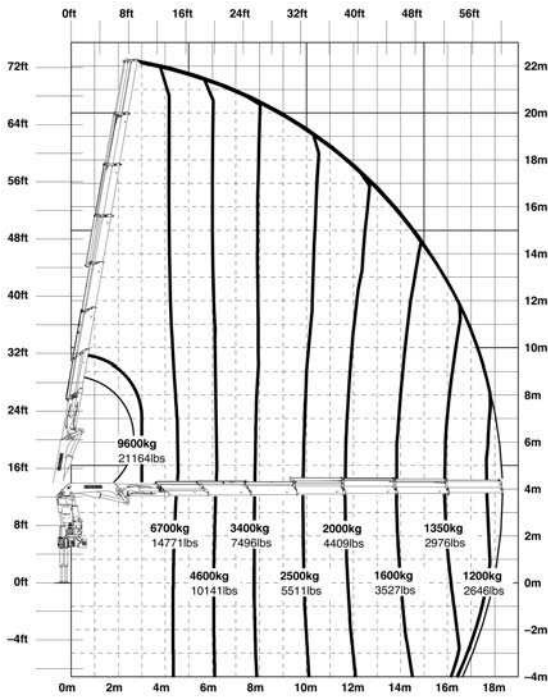
E PJ060B

0ft 8ft 16ft 24ft 32ft 40ft 48ft 56ft 64ft 72ft 80ft 88ft 96ft

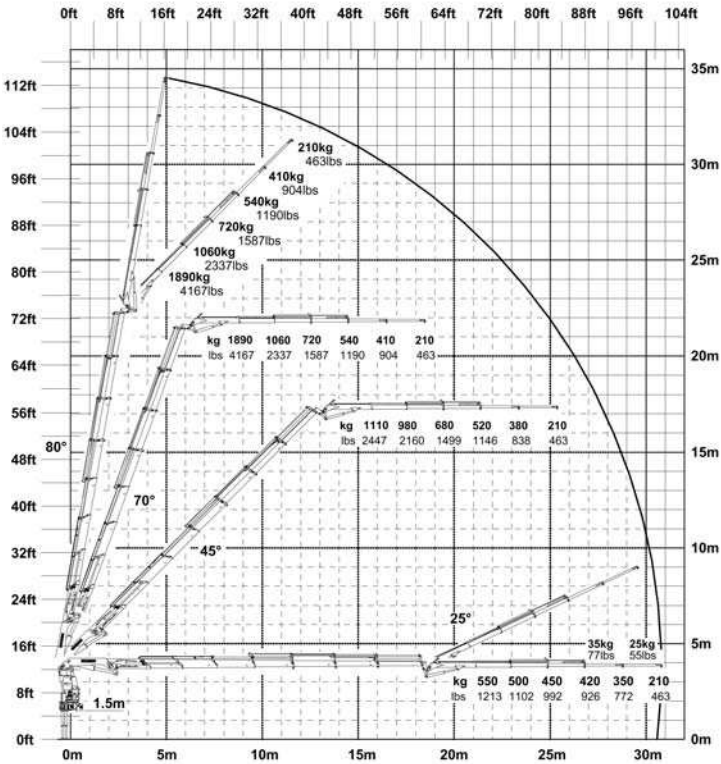


MAXIMAL OUTREACHES

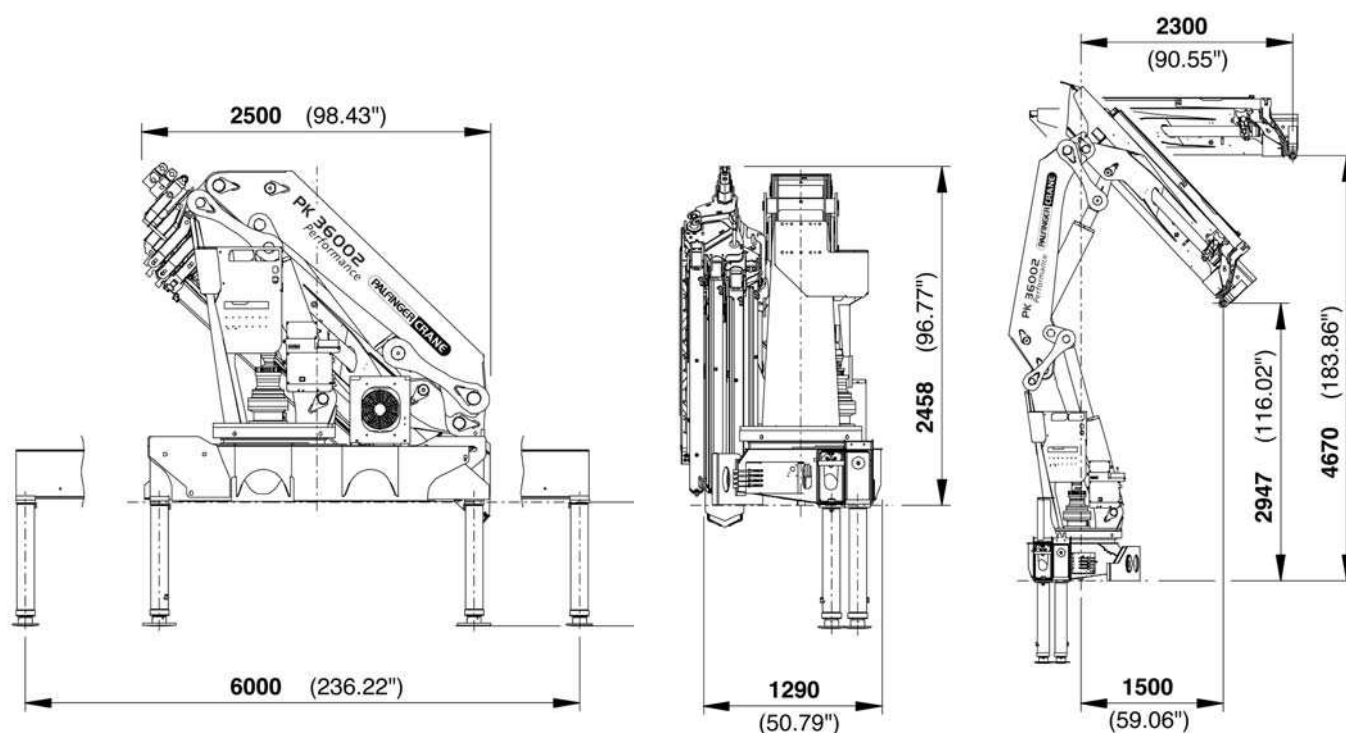
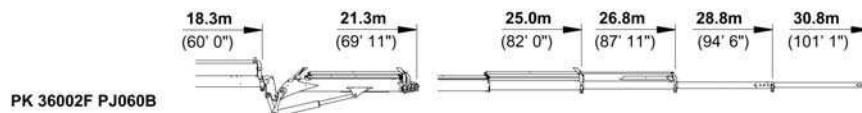
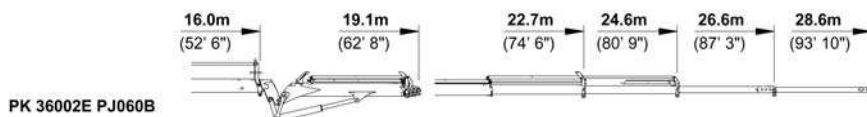
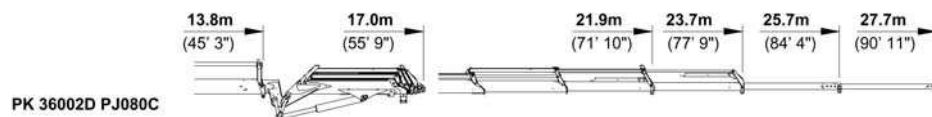
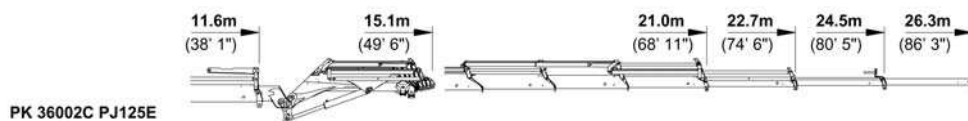
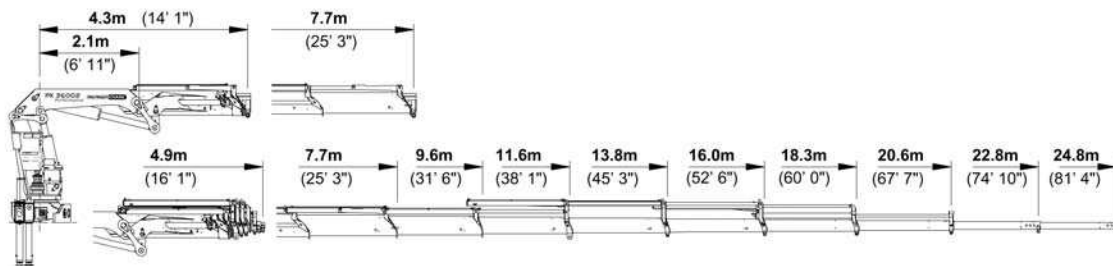
F



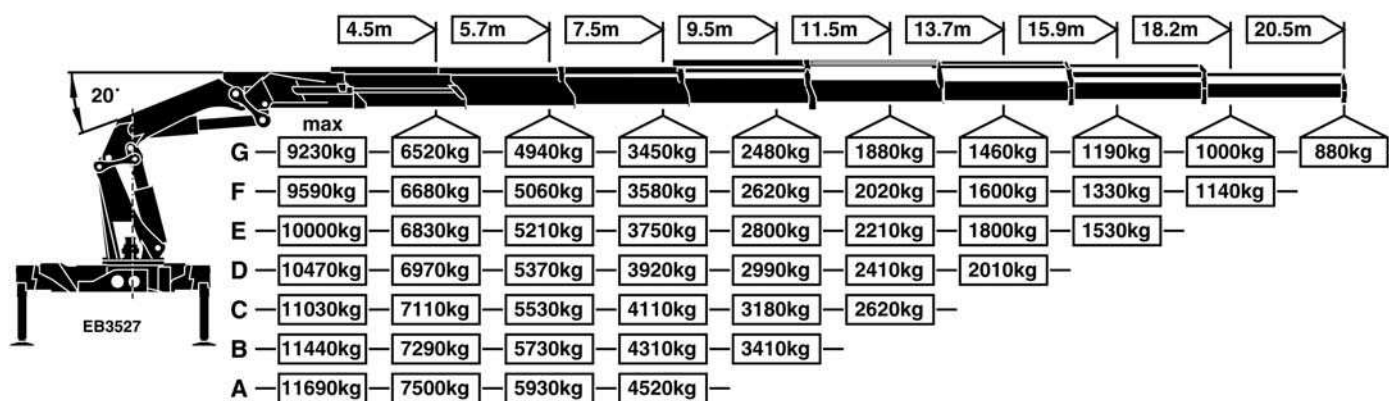
F PJ060B



PERFECT DIMENSIONS



THIS CRANE COMES WITH THE PALFINGER ADVANCED PACKAGE OF EXTENDED EQUIPMENT AS STANDARD



The outreaches stated are with a boom angle of 20° and are therefore not the maximum.

PK 36002 Performance		
Technical Specifications (EN 12999 H1-B3)		
Max. lifting moment	35.0 mt/343.4 kNm	253190 ft.lbs
Max. lifting capacity	12000 kg/117.7 kN	26450 lbs
Max. hydraulic outreach	20.6 m	67' 7"
Max. manual outreach	24.8 m	81' 4"
Max. outreach (with fly-jib)	30.8 m	101' 1"
Slewing angle	endless	

PK 36002 Performance		
Standard crane		
Slewing torque	4.0 mt/39.2 kNm	28930 ft.lbs
Outreach	7.7 m	25' 3"
Stabilizer spread standard	6.0 m	19' 8"
Stabilizer spread maximal	7.4 m	24' 3"
Fitting space required	min. 1.29 m / 4' 3" max. 1.46 m / 4' 9"	
Width folded	2.5 m	8' 4"
Max. operating pressure	330 bar	4785 psi
Recommended pump capacity with RC- and LS-system	from 80 l/min 17.6 imp.gal./min 21.1 US gal./min to 100 l/min 22.0 imp.gal./min 26.4 US gal./min	
Dead weight standard crane	3495 kg	7710 lbs

Executions shown in the leaflet are not always corresponding to standard execution. Country-specific regulations are to be observed upon attachment.



We reserve the right to change design and specification without prior notice.

KP-PK36002M2+E, 03/05

www.palfinger.com

Courtesy of Crane.Market