

gru_truck cranes

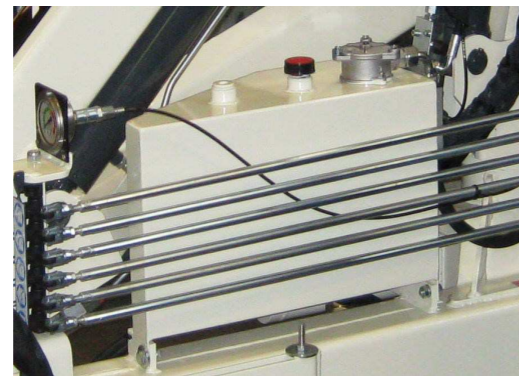
www.pesci-cranes.com



SE 44

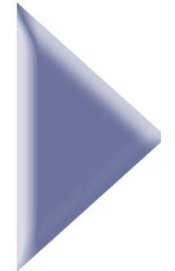
QUALITY

gru_truck cranes

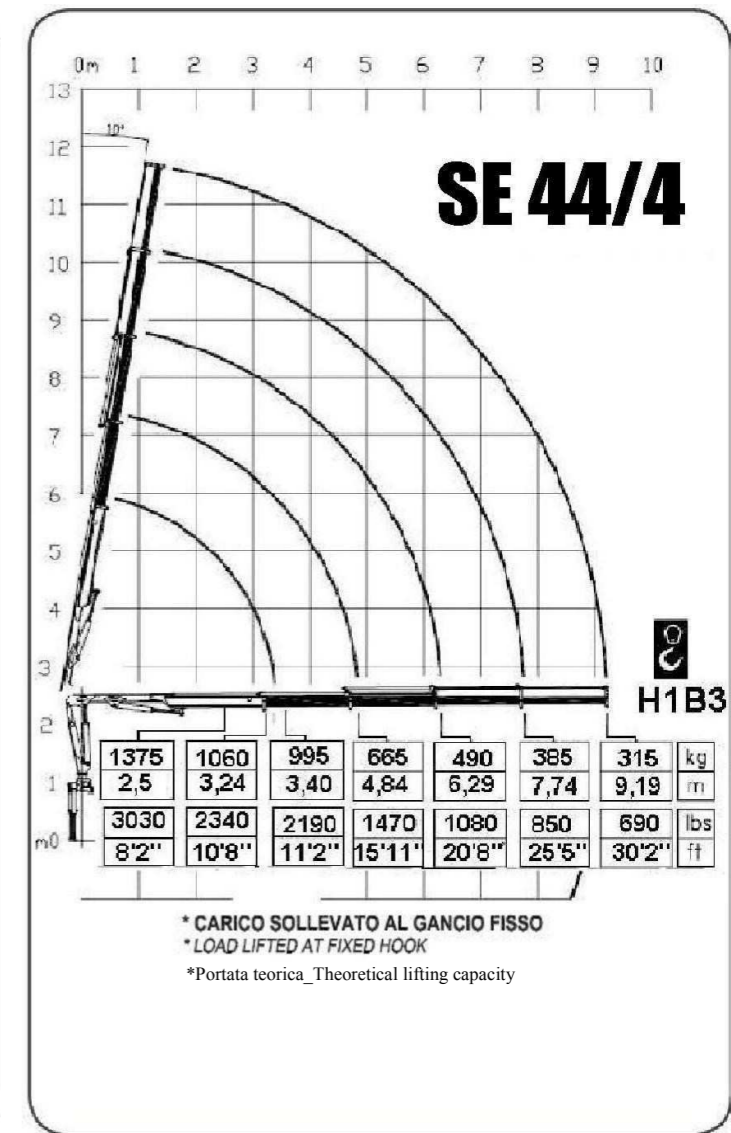
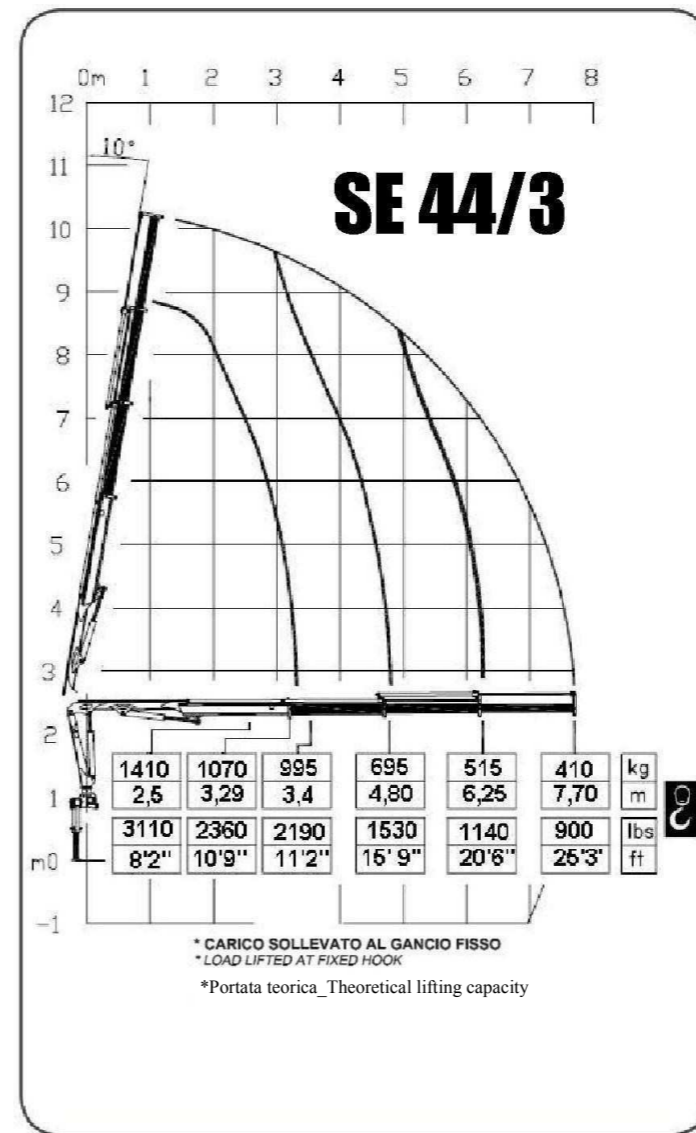
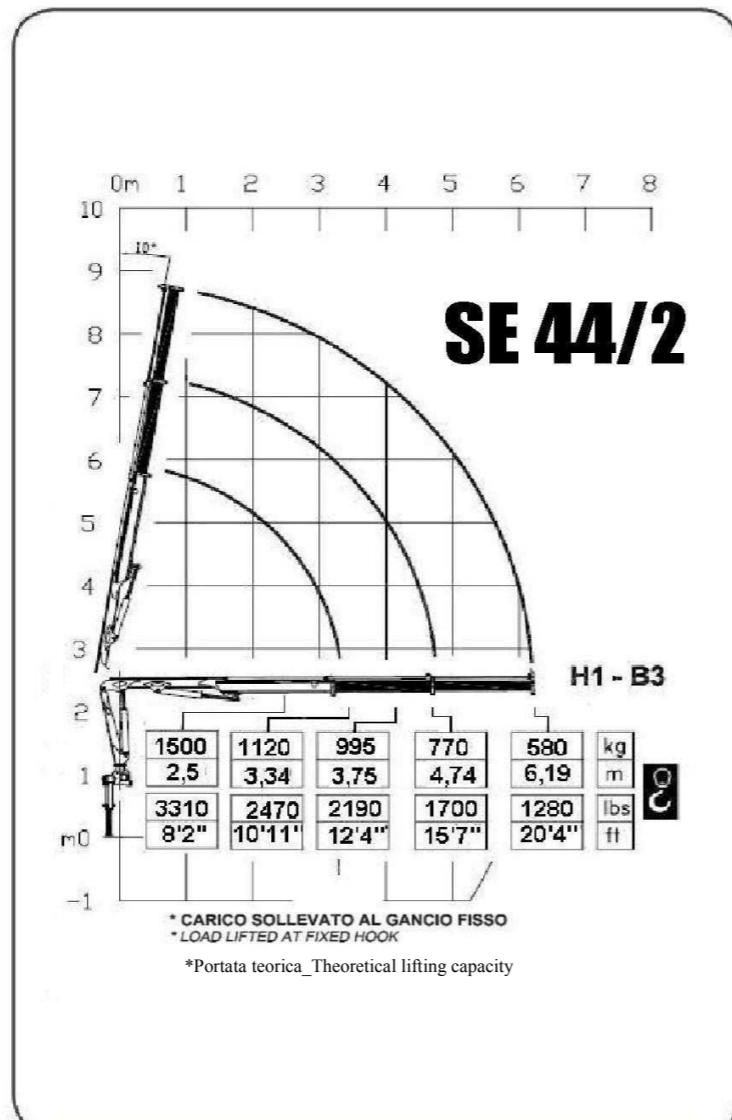
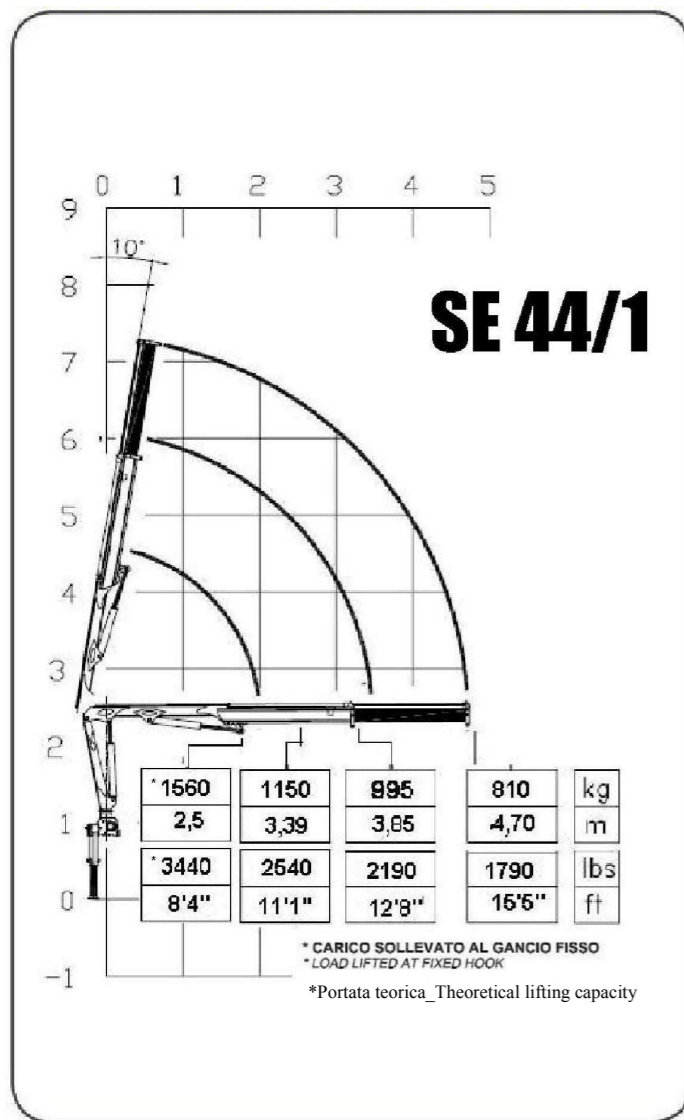


power & technology

- ▶ Scheda tecnica
- ▶ Fiche technique
- ▶ Technische daten
- ▶ Technical features
- ▶ Ficha tecnica
- ▶ Folha de dados



V. EMILIA 281 _ 48014 CASTEL BOLOGNESE (RA) _ ITALY
 Tel +39.0546.653.833 _ Fax +39.0546.656.205
 e-mail: info@pesci-cranes.com _ www.pesci-cranes.com



	1	2	3	4
- MOMENTO MAX SOLLEVAMENTO	38,3	36,8	34,6	33,7
- HUBMOMENT				
- COUPLE DE LEVAGE				
- MOMENTO	kN.m	kN.m	kN.m	kN.m
- MOMENTO	2770	2662	2503	2438
- MAX LIFTING MOMENT	lbs.ft	lbs.ft	lbs.ft	lbs.ft
- ANGOLO DI ROTAZIONE	400°	400°	400°	400°
- SCHWENKBEREICH				
- ROTATION				
- GIRO				
- ROTAÇÃO				
- SLEWING ANGLE				
- COPPIA MAX ROTAZIONE	550	550	550	550
- MAX SCHWENKMOMENT				
- COUPLE MAXI. DE ROTATION	daNm	daNm	daNm	daNm
- POTENCIA MAXIMA DE GIRO	3978	3978	3978	3978
- BINARIO MÁXIMO DE ROTAÇÃO	lbs.ft	lbs.ft	lbs.ft	lbs.ft
- PRESSIONE MAX LAVORO	290	290	290	290
- DRUCK	bar	bar	bar	bar
- PRESSION				
- PRESSIÓN				
- PRESSÃO				
- MAX WORKING PRESSURE	4205	4205	4205	4205
	psi	psi	psi	psi

	1	2	3	4
- PORTATA POMPA OTTIMALE	10	10	10	10
- FÖRDERMENGE DER PUMPE	l/min	l/min	l/min	l/min
- PORTÉE DE LA POMPE				
- CAUDAL DE LA BOMBA	2,63	2,63	2,63	2,63
- CAUDAL DA BOMBA	gal/min	gal/min	gal/min	gal/min
- RECOMMENDED PUMP DELIVERY				
- CAPACITÀ SERBATOIO OLIO	30	30	30	30
- FASSUNGSVERMÖGEN DEL ÖLBEHALTERS	l	l	l	l
- CAPACITÉ RÉSERVOIR HUILE				
- CAPACIDAD DEL DEPOSITO DE ACEITE	7,92	7,92	7,92	7,92
- CAPACIDAD DO DEPOSITO DE OLEO	gal	gal	gal	gal
- OIL TANK CAPACITY				
- VEICOLO MIN. P.T.T.	3,5	3,5	3,5	3,5
- LKW MIN. G.G.W.	t	t	t	t
- CAMION MIN. P.T.A.C.				
- CAMION PESO MIN. P.T.T.				
- P.B. MIN CAMION				
- TRUCK MIN. G.V.W.				
- PESO GRU	520	550	585	610
- GEWICHT	Kg	Kg	Kg	Kg
- POIDS				
- PESO	1060	1140	1200	1270
- PESO	lbs	lbs	lbs	lbs
- CRANE WEIGHT				

I dati e le descrizioni del presente catalogo sono forniti a titolo indicativo e non sono vincolanti. PESCI si riserva il diritto di modificarli senza preavviso.
Technical features are not binding. PESCI reserves itself the right to any modification without notice.

