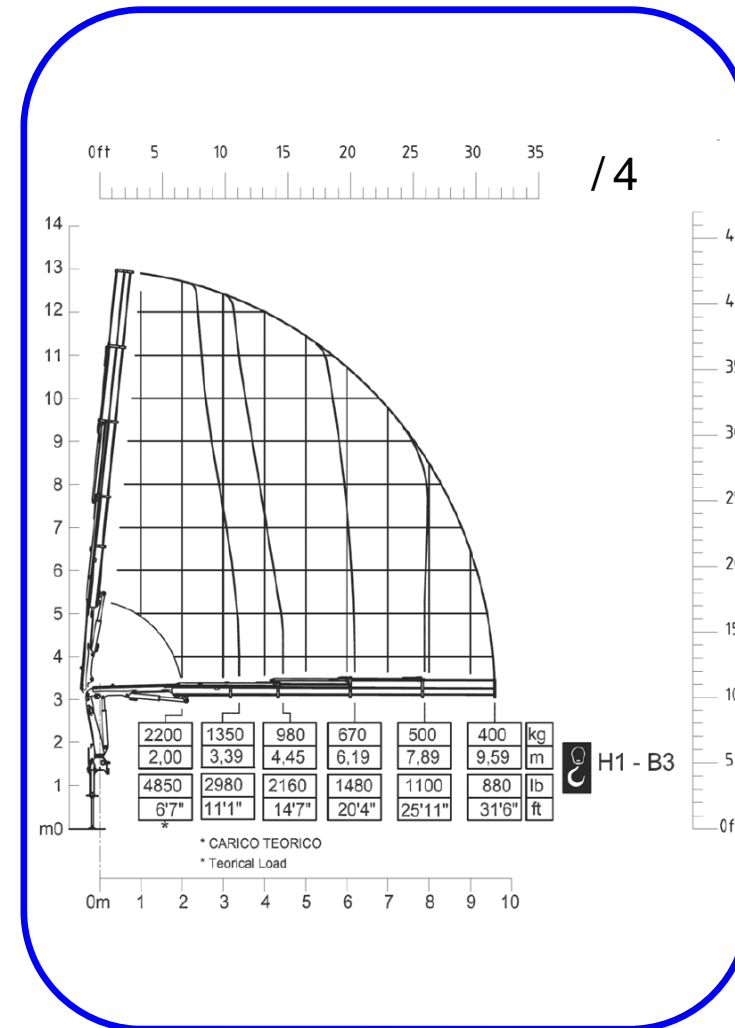
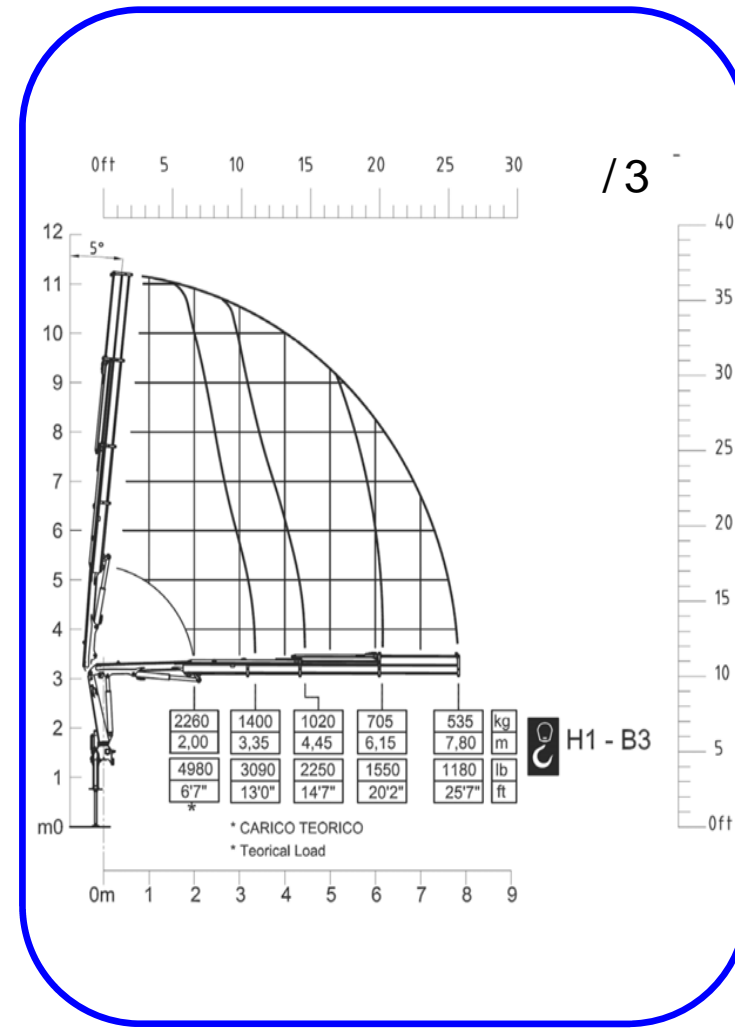
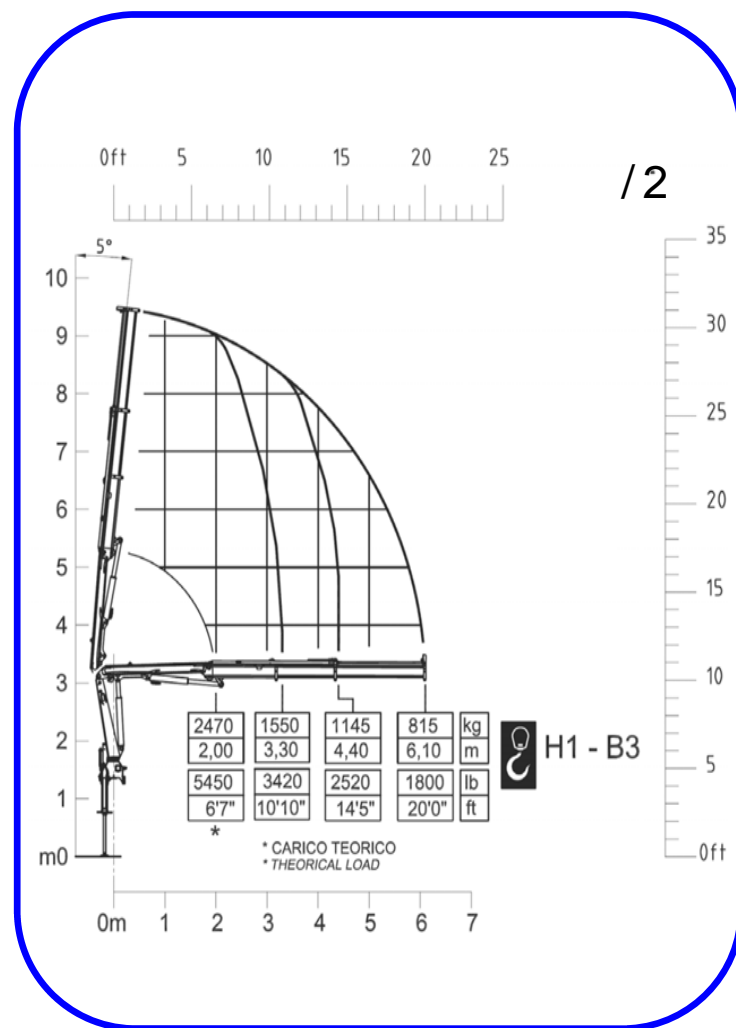
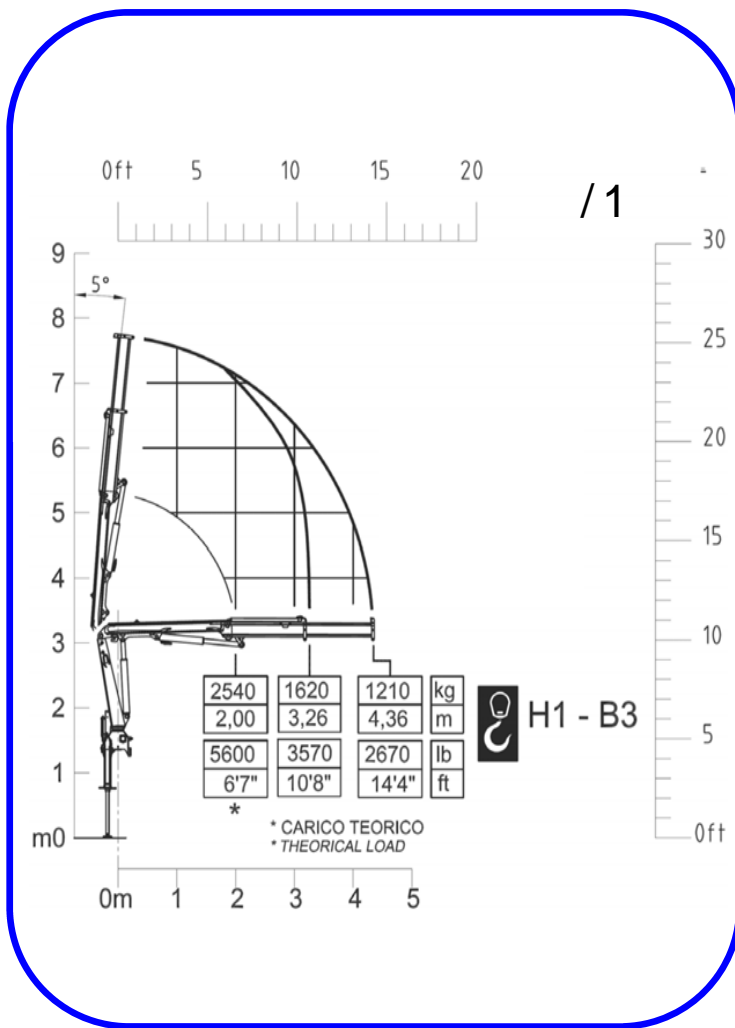


Costruttore C.P.S.srl Via Emilia Levante, 281 48014 Castel Bolognese (RA) - ITALIA  
 Tel. +39 0546 653833 Fax. +39 (0)546 656205 E-Mail info@pesci-cranes.com www.pesci-cranes.com

gru\_truck cranes



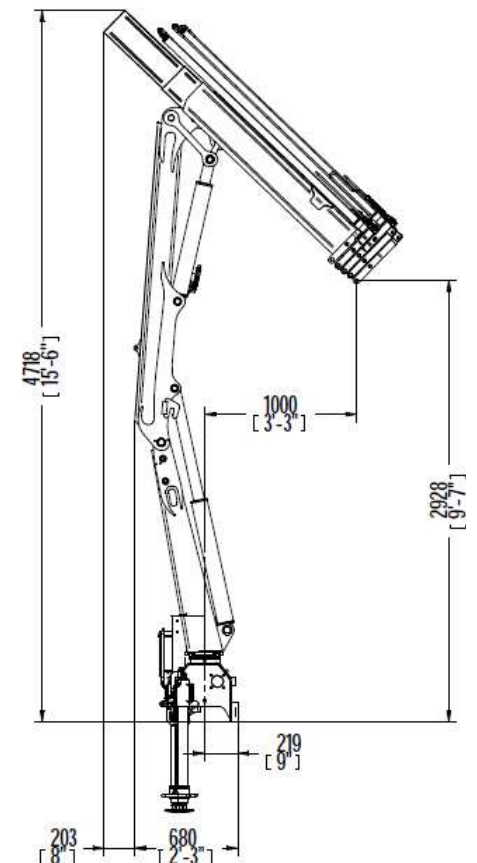
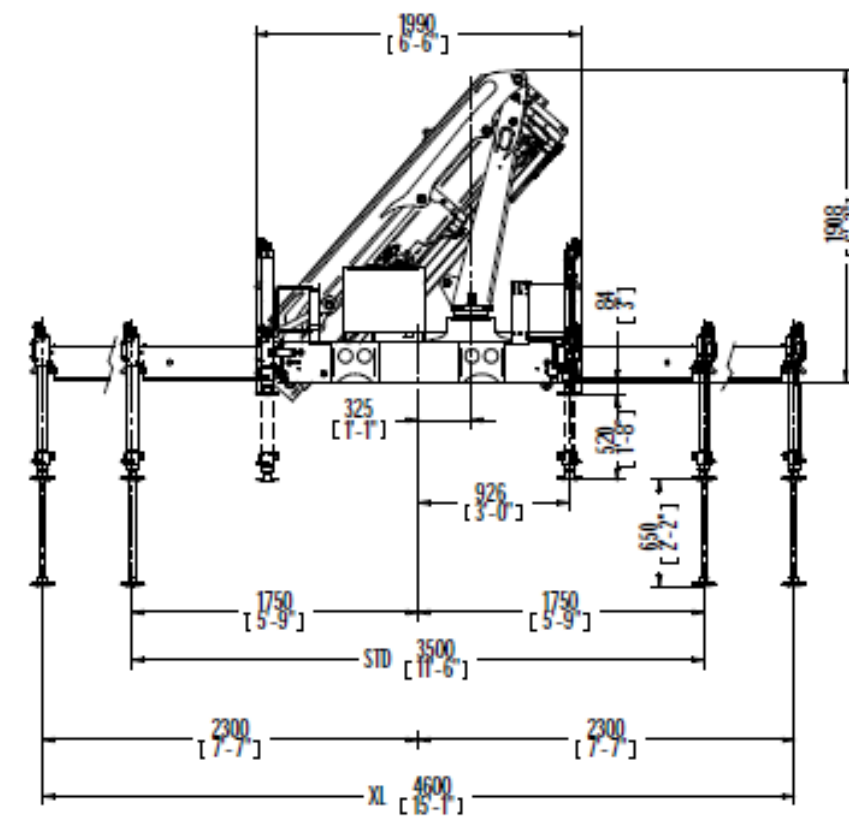
- > Scheda tecnica
- > Fiche technique
- > Technische daten
- > Technical features
- > Ficha tecnica
- > Folha de dados



1/1 1/2 1/3 1/4

1/1 1/2 1/3 1/4

- MOMENTO MAX SOLLEVAMENTO - HUBMOMENT - COUPLE DE LEVAGE - MOMENTO - MOMENTO - MAX LIFTING MOMENT	50,2 kN.m	49,5 kN.m	46 kN.m	45 kN.m	- PORTATA POMPA OTTIMALE - FÖRDERMENGE DER PUMPE - PORTÉE DE LA POMPE - CAUDAL DE LA BOMBA - CAUDAL DA BOMBA - RECOMMENDED PUMP DELIVERY	20 l/m	20 l/m	20 l/m	20 l/m
- ANGOLO DI ROTAZIONE - SCHWENKBEREICH - ROTATION - GIRO - ROTAÇÃO - SLEWING ANGLE	400°	400°	400°	400°	- CAPACITÀ SERBATOIO OLIO - FASSUNGSVERMÖGEN DEL ÖLBELTÄLTERS - CAPACITÉ RÉSERVOIR HUILE - CAPACIDAD DEL DEPOSITO DE ACEITE I - CAPACIDAD DO DEPÓSITO DE OLEO - OIL TANK CAPACITY	30 l 7,89 gal	30 l 7,89 gal	30 l 7,89 gal	30 l 7,89 gal
- COPPIA MAX ROTAZIONE - MAX SCHWENKMOMENT - COUPLE MAXI. DE ROTATION - POTENCIA MÁXIMA DE GIRO - BINARIO MÁXIMO DE ROTAÇÃO - SLEWING TORQUE	600 daN.m	600 daN.m	600 daN.m	600 daN.m	- VEICOLO MIN. P.T.T. - LKW MIN. G.G.W. - CAMION MIN. P.T.A.C. - CAMION PESO MIN. P.T.T. - P.B. MIN CAMION - TRUCK MIN. G.V.W	6,5 t	6,5 t	6,5 t	6,5 t
- PRESSIONE MAX LAVORO - DRUCK - PRESSION - PRESSIÓN - PRESSÃO - MAX WORKING PRESSURE	270 bar	270 bar	270 bar	270 bar	- PESO GRU - GEWICHT - POIDS - PESO - PESO - CRANE WEIGHT	700 kg	770 kg	825 kg	875 kg
	3915 Psi	3915 Psi	3915 Psi	3915 Psi		1540 lbs	1700 lbs	1820 lbs	1930 lbs



I dati e le descrizioni del presente catalogo sono forniti a titolo indicativo e non sono vincolanti. PESCI si riserva il diritto di modificarli senza preavviso.  
Technical features are not binding. PESCI reserves itself the right to any modification without notice.