

**PETTIBONE®**

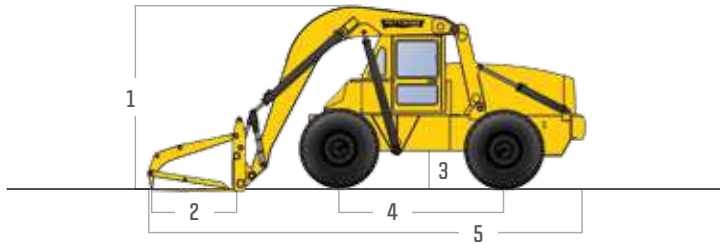
# » CARY-LIFT 154 WOOD BALER

SPECIFICATIONS

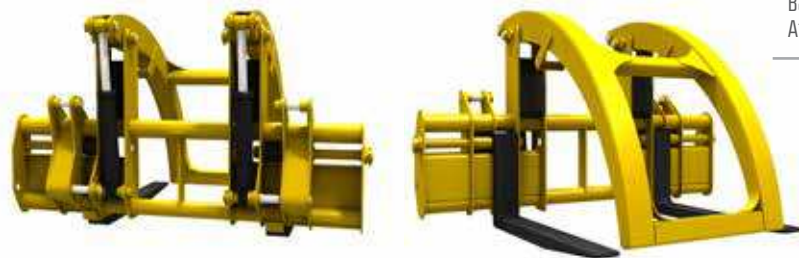


Equipped with a special wood baler, the newly redesigned Cary-Lift™ 154 is more productive, easier to service and more cost-effective than ever before. The 154 offers wider lift arms and front balers for enhanced load stability, along with the Pettibone® patented lift arm design for full front visibility and safer operation in wood yards. Featuring an IQAN® controlled electrohydraulic system, the 154 is built for optimal efficiency.

# SPECIFICATIONS



DIMENSIONS	
1	<b>Height</b> 11' (335 cm) - carrying position 18' 9" (572 cm) - max raised position
2	<b>Fork Length</b> 60" (152 cm) standard, others available
3	<b>Ground Clearance</b> 19" (48 cm)
4	<b>Wheel Base</b> 10' (305 cm)
5	<b>Overall Length</b> 25' (762 cm) - carrying position 30' 3" (922 cm) - at max reach
	<b>Overall Width</b> 10' 5" (320 cm)
	<b>Total Operating Weight</b> 42,200 lbs (19,142 kg)
ENGINE	
	<b>Model/Power</b> 160 HP (119 kW) Cummins® QSB6.7 Tier III
	<b>Fuel Tank</b> 79 gal. (299 L)
	<b>Fan</b> Hydraulically driven and reversible
	<b>Cooling Package</b> CAC, radiator, transmission and hydraulic oil
	<b>Heating</b> Engine block heater
HYDRAULIC SYSTEM	
	<b>Control System</b> IQAN®: Infinite variable control, individual operator settings, onboard diagnostics
	<b>Filter</b> Hydraulic return oil filtration (10 micron)
	<b>Tank</b> 40 gal. (151 L)
	<b>Sway Cylinder</b> 8° both right and left of center
	<b>Joystick</b> Single joystick operation with push button shifting



PERFORMANCE	
<b>Max Load Capacity (Retracted)</b>	15,000 lbs (6,804 kg) 24" LG from back of fork 30,000 lbs (13,608 kg) tipping load
<b>Max Load Capacity (Extended)</b>	10,000 lbs (4,536 kg) 24" LG from back of fork 13,300 lbs (6,033 kg) tipping load
<b>Maximum Lift Height</b>	14' (427 cm)
<b>Below Grade Reach</b>	1.1" (2.79 cm)
<b>Maximum Reach from Tires</b>	2' 2" (66 cm) retracted 6' 11" (211 cm) extended, forks parallel 8' 10" from ground 5' 9" (175 cm) extended, forks parallel at carrying height
<b>Maximum Travel Speed</b>	3.9 mph (6.3 km/h) 1st gear 7.0 mph (11.3 km/h) 2nd gear 12.5 mph (20.1 km/h) 3rd gear 22.3 mph (35.9 km/h) 4th gear
<b>Turning Radius</b>	16' 7" (505 cm)
<b>Transmission</b>	3 speed Powershift
<b>Axles</b>	AxleTech® high steer
<b>Steering</b>	Hydraulic power steering with 2 wheel, 4 wheel and crab steering
<b>Service Brakes</b>	4-wheel outboard dry hydraulic disc
<b>Parking Brake</b>	Spring applied hydraulic release
<b>Tires</b>	29.5 x 29 34 ply interchangeable
<b>Lighting</b>	Full LED lighting

## FEATURES & OPTIONS

OPERATOR CAB	
Large tinted safety glass windows Rear view mirror Adjustable suspension seat with seat belt, padded armrests & lumbar support	Tilt/telescopic steering column All-weather cab Dome light
AVAILABLE ATTACHMENTS	
Fork frames Pipe and pole balers	Log balers Scrap balers
OPTIONS & ACCESSORIES	
Back up camera Attachment camera	Autoshift Air-conditioned cab

\* Specifications are subject to change.

**PETTIBONE®**

**PETTIBONE, LLC**  
1100 Superior Avenue  
Baraga, MI 49908  
  
P: 800.467.3884  
info@gopettibone.com  
www.gopettibone.com



<b>1 Year</b>	Full machine and attachment
<b>2 Years</b>	Powertrain and major hydraulic components
<b>3 Years</b>	Machine structure

## WARRANTY