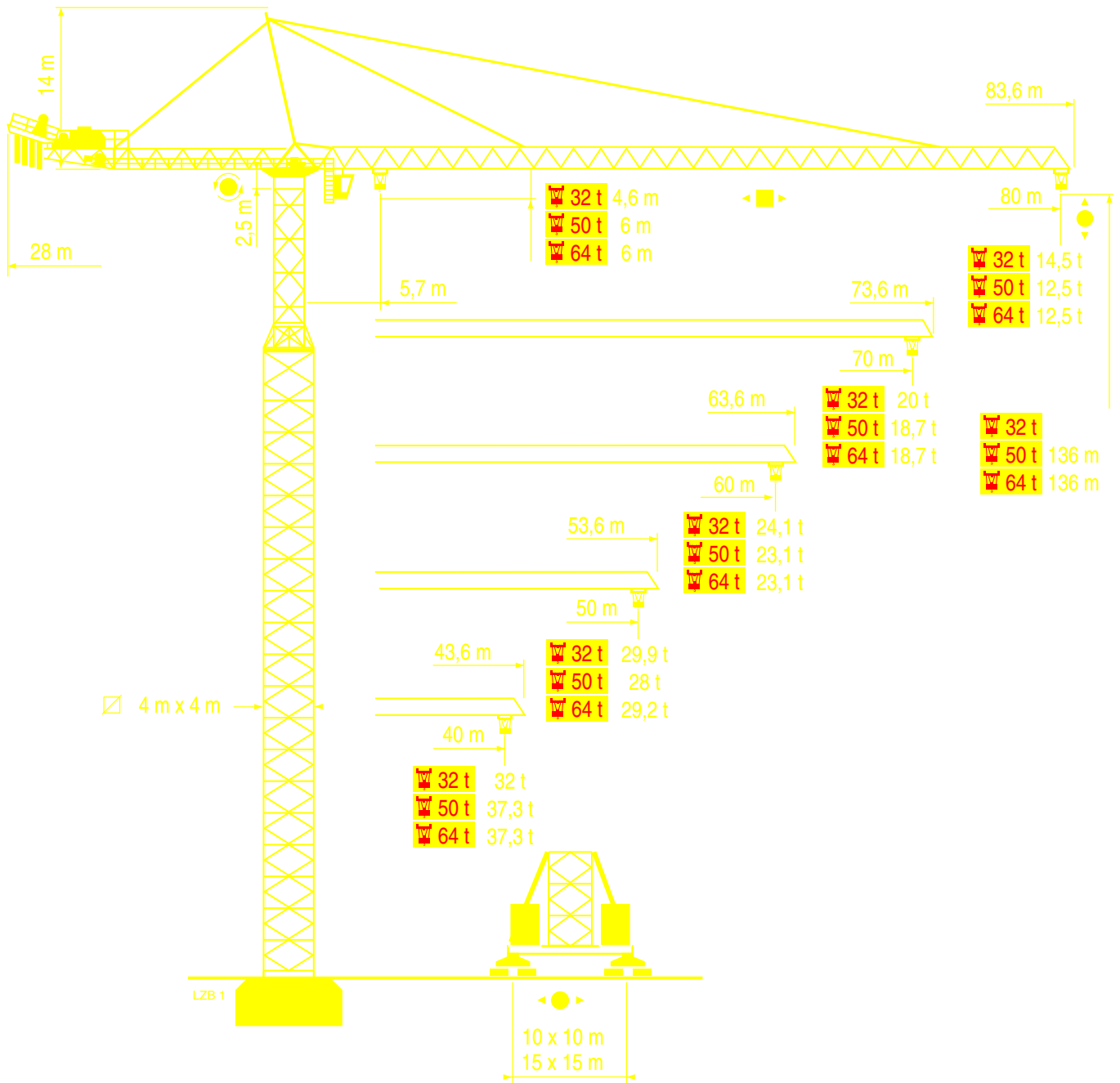


MD 1400



Mat / Réactions \square 4 m x 4 m

Maste /
Eckdrücke

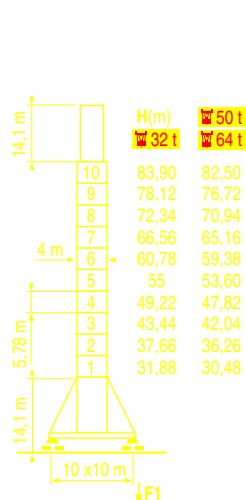
Masts /
Reactions

Mástil /
Reacciones

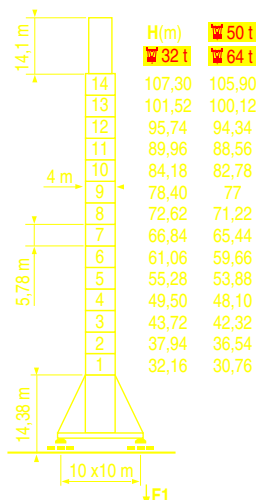
Torre / Reazioni

Tramo /
Reações

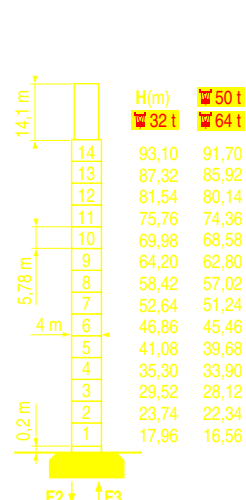
L28.1



F1	32 t	242 t	210 t
	50 t	246 t	210 t
	64 t	250 t	210 t



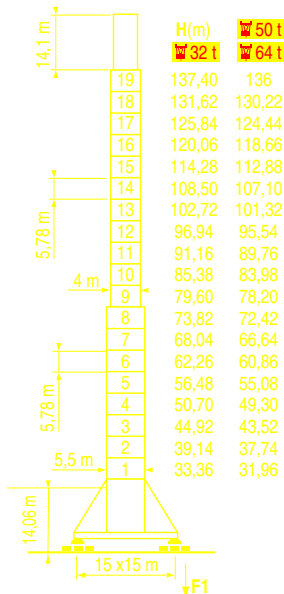
F1	32 t	288 t	278 t
	50 t	292 t	278 t
	64 t	296 t	278 t



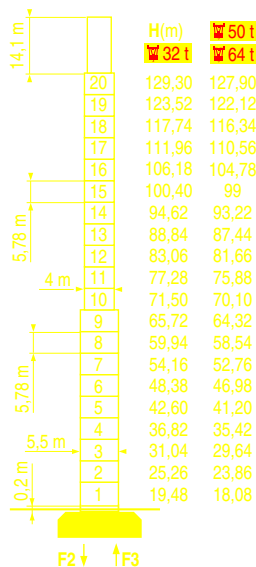
F2	32 t	380 t	287 t
	50 t	384 t	287 t
	64 t	388 t	287 t

F3	32 t	206 t	129 t
	50 t	201 t	129 t
	64 t	198 t	129 t

\square 4 m x 4 m
5,5 m x 5,5 m



F1	32 t	292 t	395 t
	50 t	296 t	395 t
	64 t	300 t	395 t



MD 1400

POTAIN

F	D	GB	E	I	P
Réactions en service	Reaktionskräfte in Betrieb	Reactions in service	Reacciones en servicio	Reazioni in servizio	Reações em serviço
Réactions hors service	Reaktionskräfte außer Betrieb	Reactions out of service	Reacciones fuera de servicio	Reazioni fuori servizio	Reações fora de serviço
A vide sans lest (ni train de transport) avec flèche et hauteur maximum.	Ohne Last, Ballast (und Transportachse), mit Maximalausleger und Maximalhöhe.	Without load, ballast (or transport axes), with maximum jib and maximum height.	Sin carga, sin lastre, (ni tren de transporte), flecha y altura máxima.	A vuoto, senza zavorra (ne assali di trasporto) con braccio massimo e altezza massima.	Sem carga (nem trem de transporte)- sem lastro com lança e altura máximas.
Nous consulter	Auf Anfrage	Consult us	Consultarnos	Consultateci	Consultar-nos



Document commercial non contractuel. Pour toute information technique se référer à la notice correspondante

Unverbindliches Vertriebsdokument. Für technische Informationen, siehe die entsprechenden Anweisungen.

This commercial document is not legally binding. For any technical information, please refer to the corresponding instructions.

Documento commercial no contractual. Para cualquier información técnica, ver la noticia correspondiente.

Documento commerciale non vincolante, per tutte le informazioni tecniche fare riferimento al catalogo istruzioni

Documento comercial não contractual. Para qualquer informação técnica complementar consultar as respectivas instruções

anitowoc

POTAIN

Manitowoc Crane Group

18, rue de Charbonnières - B.P.173
69132 ECULLY Cedex - France

Tél. : (33) 4 72 18 20 20
Fax. : (33) 4 72 18 20 00
www.manitowoccrane.com www.potain.com



Americas

Tel: +1 920 683 6222
Tel: +1 717 587 8121

Europe - Middle East - Africa

Tel : +(33) 4 72 81 30 00
Tel : +(44) 191 565 6281

Asia - Pacific

Tel: +(65) 6861 7133
Fax: +(65) 6862 4142

www.manitowoccrane.com

MD 1400

Réf. 2003 48 LZB 1

Copyright Reproduction interdite © POTAIN 2003

Réalisation HeadLines