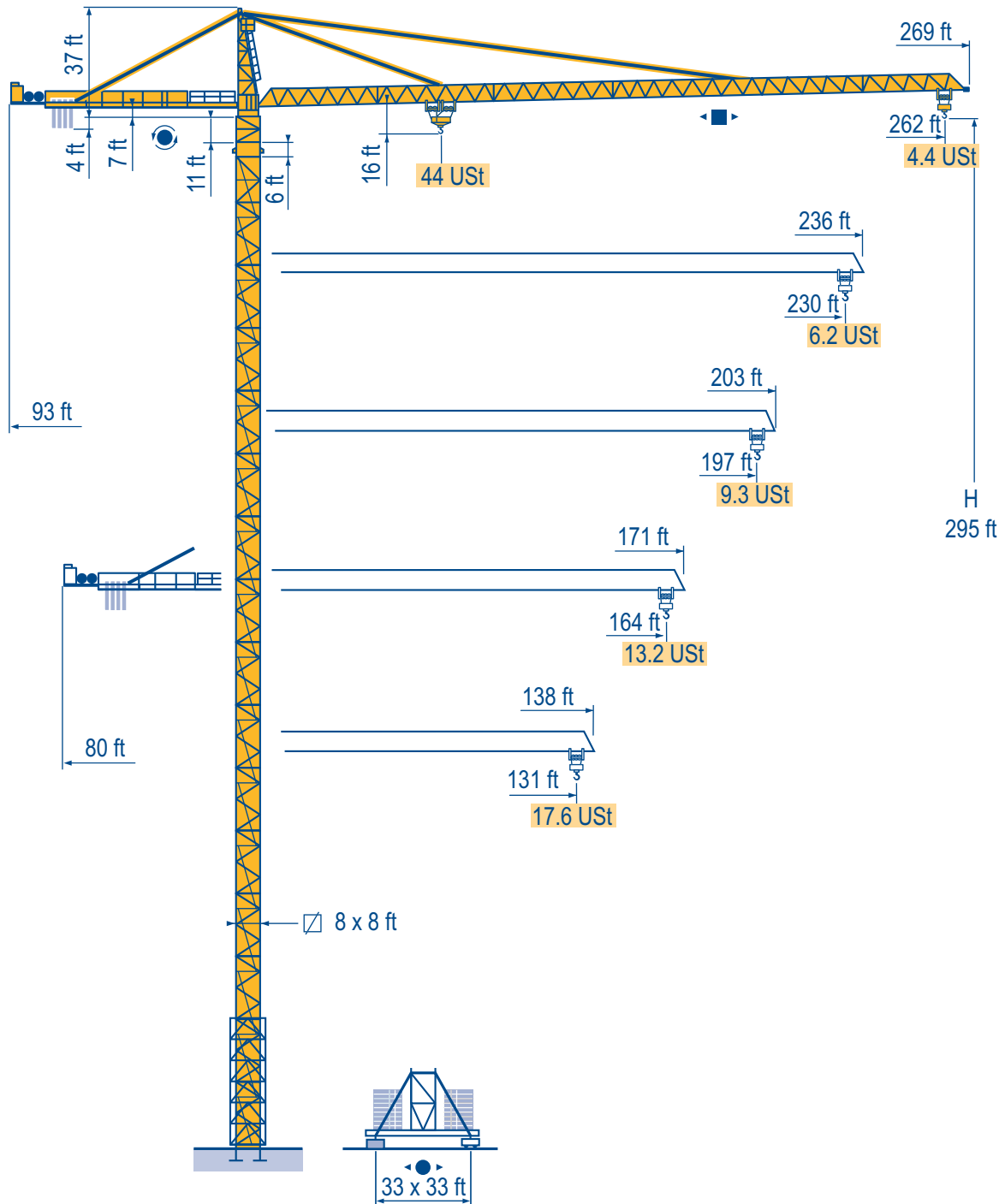


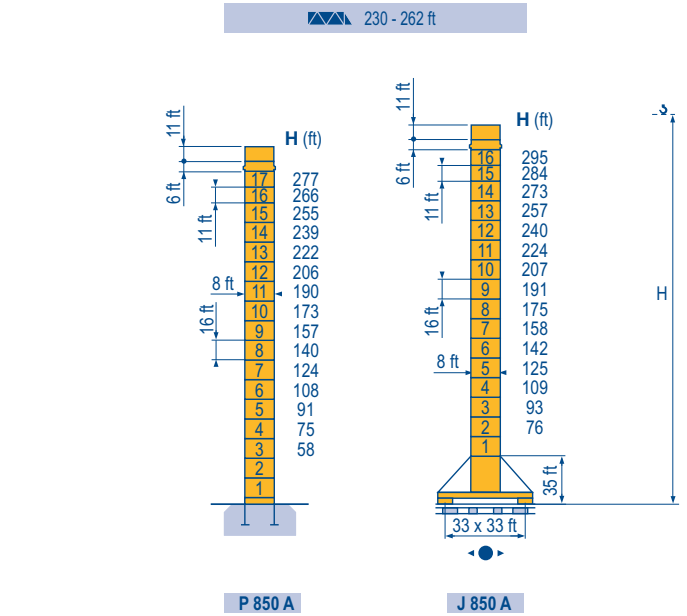
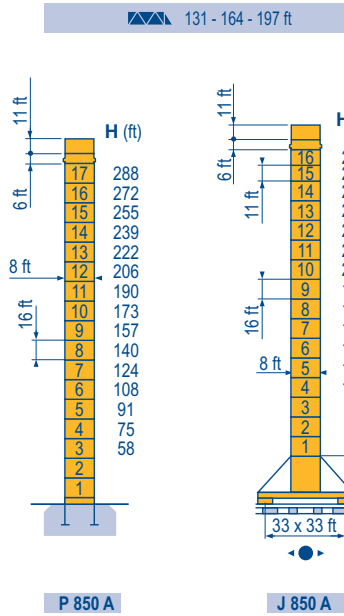
POTAIN

MD 560 A



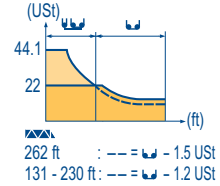
Masts / Reactions

8 x 8 ft



Load diagrams

Height (ft)	14	42	50	56	66	73	78	82	89	98	105	115	131	148	164	180	197	213	230	246	262	ft
262 ft	44.1	35.9	30.8	25.1	22	22	20.9	19.1	16.9	15.5	13.9	11.8	10.1	8.8	7.0	6.8	6.1	5.4	4.9	4.4	4.4	UST
230 ft	44.1	38.5	33.1	27.1	24	22	22	20.5	18.1	16.8	15.1	12.8	11	9.7	8.6	7.6	6.8	6.2	6.2	6.2	6.2	UST
197 ft	44.1	39.1	32.2	28.7	24.5	22	22	21.4	19.8	17.9	15.3	13.2	11.7	10.4	9.3	9.3	9.3	9.3	9.3	9.3	9.3	UST
164 ft	44.1	36.3	32.4	27.8	25.2	22	22	20.2	19	17.3	15	13.2	13.2	13.2	13.2	13.2	13.2	13.2	13.2	13.2	13.2	UST
131 ft	44.1	37	33.1	28.3	25.8	22	22	20.6	19.3	17.6	17.6	17.6	17.6	17.6	17.6	17.6	17.6	17.6	17.6	17.6	17.6	UST



F	D	GB	E	I	P
● Réactions en service	● Reaktionskräfte in Betrieb	● Reactions in service	● Reacciones en servicio	● Reazioni in servizio	● Reacções em serviço
■ Réactions hors service	■ Reaktionskräfte außer Betrieb	■ Reactions out of service	■ Reacciones fuera de servicio	■ Reazioni fuori servizio	■ Reacções fora de serviço
🚛 A vide sans lest (ni train de transport) avec flèche et hauteur maximum.	🚛 Ohne Last, Ballast (und Transportachse), mit Maximalausleger und Maximalhöhe.	🚛 Without load, ballast (or transport axes), with maximum jib and maximum height.	🚛 Sin carga, sin lastre, (ni tren de transporte), flecha y altura máxima.	🚛 A vuoto, senza zavorra (ne assali di trasporto) con braccio massimo e altezza massima.	🚛 Sem carga (nem trem de transporte)- sem lastro com lança e altura máximas.
📄 Nous consulter	📄 Auf Anfrage	📄 Consult us	📄 Consultarnos	📄 Consultateci	📄 Consultar-nos

Counter-jib ballast

	8,818 lb - 13,228 lb	
	H (ft)	(lb)
262 ft	93 ft	52,910
230 ft	93 ft	48,501
197 ft	93 ft	48,501
164 ft	80 ft	52,910
131 ft	80 ft	35,273

Base ballast

	J850A	H (ft)	295	284	273	257	240	224	207	191	175	158	142	125	109
8 ft	131 - 164 - 197 ft	(USt)	172	146	119	79	53	53	53	53	53	53	53	53	53
	J850A	H (ft)	295	284	273	257	240	224	207	191	175	158	142	125	109
8 ft	230 - 262 ft	(USt)	198	172	132	106	66	53	53	53	53	53	53	53	53

Mechanisms

MD 560 A 400 V 50 Hz													ch - PS hp	kW				
	250 LCC 100	ft/min	151	197	249	315	354	75	98	125	157	177	250	180	1,601 ft			
		USt	22	16.5	11	5.5	2.8	44.1	33.1	22	11	5.5						
	RVF 183 Optima +	tr/min U/min rpm	0 → 0.7												3 x 12	3 x 9		
	15 DVF 16	ft/min	0 → 108 (44.1 USt) - 0 → 164 (22 USt) - 0 → 220 (11 USt) - 0 → 328 (2.8 USt)										15	11				
J 850 A		ft/min																
CEI 38			IEC 38					kVA										
400 V (+6% -10%) 50 Hz			250 LCC : 325 kVA															

MD 560 A 480 V 60 Hz													ch - PS hp	kW				
	250 LCC 100	ft/min	151	197	249	315	354	75	98	125	157	177	250	180	1,601 ft			
		USt	22	16.5	11	5.5	2.8	44.1	33.1	22	11	5.5						
	215 LBR 100	ft/min	12/125	20/197	31/315	50/499	6/62	10/98	16/157	25/249					215	158	1,903 ft	
		USt	22	13.3	7.8	4.3	44.1	26.6	15.5	8.6								
	RVF 183 Optima +	tr/min U/min rpm	0 → 1												3 x 15	3 x 11		
	15 DVF 16	ft/min	0 → 164 (22 USt) 0 → 220 (8.3 USt) 0 → 328 (2.8 USt)					0 → 108 (44.1 USt) 0 → 220 (9 USt) 0 → 328 (2.8 USt)					15	11				
J 850 A		ft/min																
CEI 38			IEC 38					kVA										
480 V (+6% -10%) 60 Hz			250 LCC : 380 kVA - 215 LBR : 240 kVA															

POTAIN

F

Levage
Distribution
Orientation
Translation

D

Heben
Katzfahren
Schwenken
Kranfahren

GB

Hoisting
Trolleying
Slewing
Travelling

E

Elevación
Distribución
Orientación
Traslación

I

Sollevamento
Distribuzione
Rotazione
Traslazione

P

Elevação
Distribuição
Rotação
Translação



Document commercial non contractuel. Pour toute information technique se référer à la notice correspondante.

Unverbindliches Vertriebsdokument. Für technische Informationen, siehe die entsprechenden Anweisungen.

This commercial document is not legally binding. For any technical information, please refer to the corresponding instructions.

Documento commercial no contractual. Para cualquier información técnica, ver la noticia correspondiente.

Documento commerciale non vincolante, per tutte le informazioni tecniche fare riferimento al catalogo istruzioni.

Documento comercial não contractual. Para qualquer informação técnica complementar consultar as respectivas instruções.



Americas

Tel : +1 888 479 7278
Tel : +1 717 593 2000

Europe – Middle East – Africa

Tel : +33 (0) 4 72 81 50 00
Tel : +44 (0) 191 522 2000

Asia – Pacific

Tel : +65 6264 1188
Fax : +65 6862 4040

www.manitowoccrane.com

**18, rue de Charbonnières - B.P.173
69132 ECULLY Cedex - France**

Tél. : +33 (0) 4 72 18 20 20
Fax. : +33 (0) 4 72 18 20 00
www.manitowoccrane.com