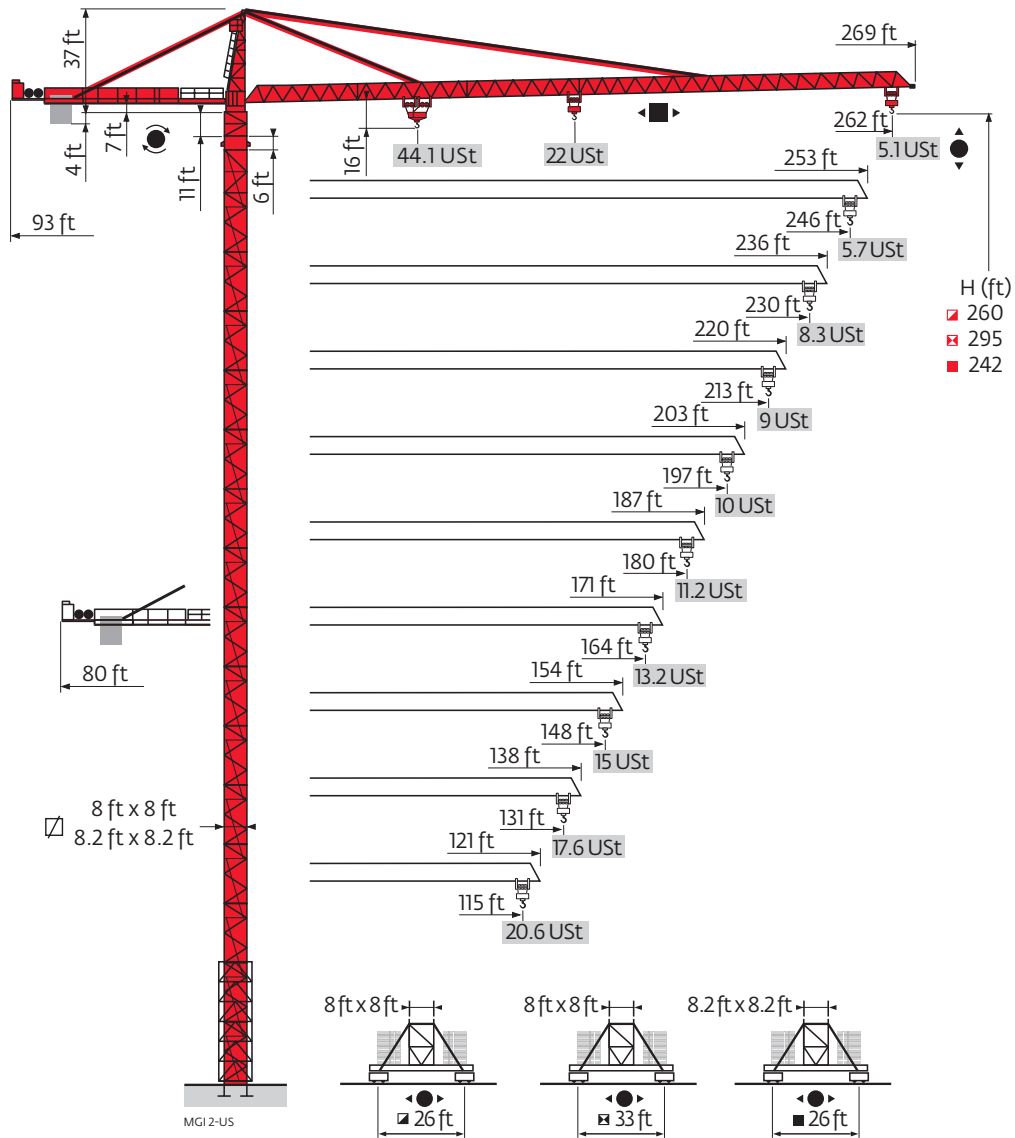


# Potain MD 560 B

## Data Sheets

FEM 1.001-A3

### MD 560 B M20-M40

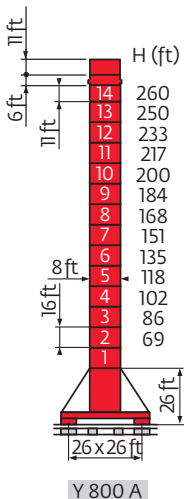
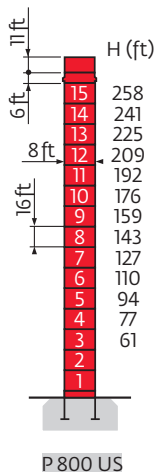


Values have been rounded

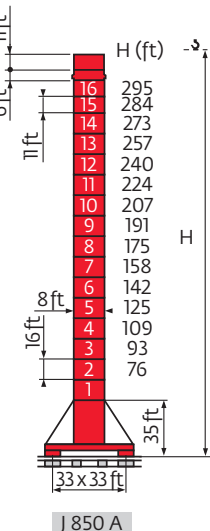
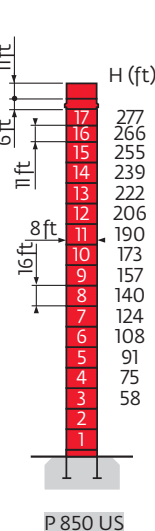
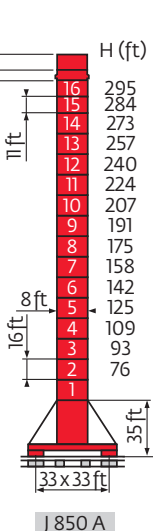
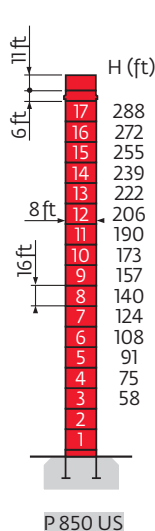
# Mast

□ 8 ft x 8 ft

22 Ust  
115 ft - 262 ft

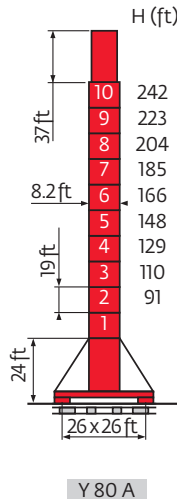
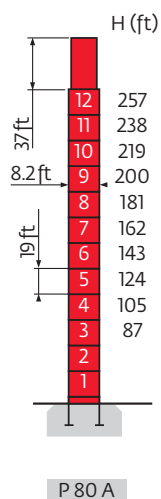


44.1 Ust  
115 ft - 230 ft      246 ft - 262 ft

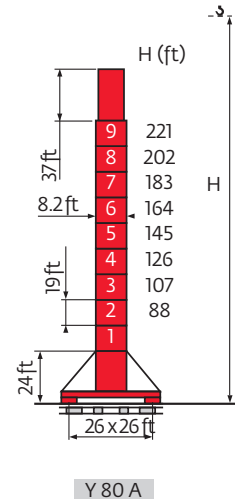
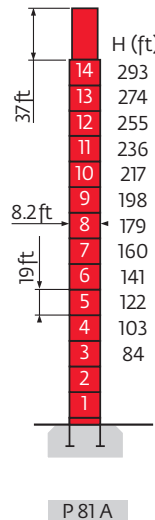
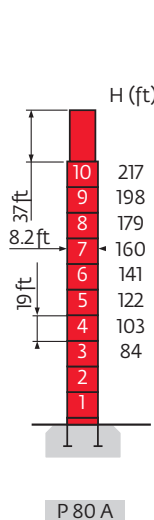



□ 8.2 ft x 8.2 ft

22 Ust  
115 - 262 ft



44.1 Ust  
115 - 262 ft

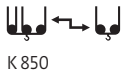


- A** Distance between collars
- H1** Crane height
- P** Crane weight (in service)
- R** Horizontal reaction
-  See climbing crane

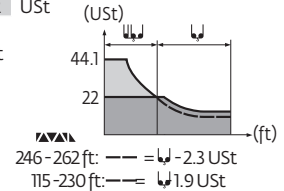
# Load charts



Height (ft)	Capacity (ft)	262	230	213	197	180	164	148	131	115	105	98	89	82	81	ft			
262 ft	10 ▶	22	20.2	20.2	19.7	19.8	18.4	16.5	14.2	12.3	10.8	9.4	8.3	7.4	6.6	6	5.4	4.9	USt
246 ft	10 ▶	22	20.2	20.2	19.7	19.8	18.4	16.5	14.2	12.3	10.8	9.4	8.3	7.4	6.6	6	5.4	4.9	USt
230 ft	10 ▶		22	20.2	19.7	19.8	18.4	16.5	14.2	12.3	10.8	9.4	8.3	7.4	6.6	6	5.4	4.9	USt
213 ft	10 ▶			22	19.8	18.4	16.5	14.2	12.3	10.8	9.4	8.3	7.4	6.6	6	5.4	4.9		ft
197 ft	10 ▶				22	19.8	18.4	16.5	14.2	12.3	10.8	9.4	8.3	7.4	6.6	6	5.4	4.9	USt
180 ft	10 ▶					22	20.1	18.6	16.9	14.3	12.5	10.9	9.7	8.7					USt
164 ft	10 ▶						22	20.5	19	17.1	14.7	12.7	11.1	9.9					USt
148 ft	10 ▶							22	20.2	18.7	16.9	14.4	12.6	11					USt
131 ft	10 ▶								22	20.1	18.6	16.8	14.3						USt
115 ft	10 ▶									22	21.1	19.5	17.6						USt



Height (ft)	Capacity (ft)	43	49	56	66	72	77	84	89	98	105	115	131	148	164	180	197	213	230	246	262	ft	
262 ft	13 ▶	44.1	37.9	32.7	26.8	23.8	22	22	20.6	18.2	16.9	15.2	12.9	11.1	9.8	8.6	7.7	6.8	6.2	5.6	5.1		USt
246 ft	13 ▶	44.1	38.3	33	27.1	24	22	22	20.8	18.4	17.1	15.3	13.1	11.4	9.9	8.8	7.8	7.1	6.3	5.7		USt	
230 ft	13 ▶		44.1	41.2	34.1	30.4	26.1	23.8	22	22	21.3	19.2	16.4	14.3	12.6	11.2	10	9.1	8.3			USt	
213 ft	13 ▶			44.1	40.9	33.8	30.3	26	23.7	22	22	21.2	19.1	16.3	14.2	12.6	11.1	10	9			USt	
197 ft	13 ▶				44.1	41	34.0	30.3	26	23.7	22	22	21.2	19.1	16.4	14.2	12.6	11.1	10			USt	
180 ft	13 ▶					44.1	41.7	34.5	30.9	26.5	24.1	22	22	21.5	19.4	16.6	14.4	12.8	11.2			USt	
164 ft	13 ▶						44.1	43.1	35.7	32	27.4	25	22	22	20.1	17.2	15	13.2				USt	
148 ft	13 ▶							44.1	43.1	35.7	31.9	27.4	25	22	22	20.1	17.2	15				USt	
131 ft	13 ▶								44.1	36.6	32.7	28.1	25.7	22.6	22	20.6	17.6					USt	
115 ft	13 ▶									44.1	36.6	32.7	28.2	25.7	22.6	22	20.6					USt	













# Counter-jib ballast


22 USt			44.1 USt		
8818 - 13,228 lb			8818 - 13,228 lb		
Height (ft)	Capacity (ft)	(lb)	Height (ft)	Capacity (ft)	(lb)
262 ft	93 ft	66,139	262 ft	93 ft	66,139
246 ft	93 ft	61,729	246 ft	93 ft	61,729
230 ft	93 ft	61,729	230 ft	93 ft	66,139
213 ft	93 ft	52,911	213 ft	93 ft	57,320
197 ft	93 ft	48,502	197 ft	93 ft	52,911
180 ft	93 ft	44,092	180 ft	93 ft	48,502
164 ft	80 ft	52,911	164 ft	80 ft	57,320
148 ft	80 ft	48,502	148 ft	80 ft	52,911
131 ft	80 ft	35,274	131 ft	80 ft	44,092
115 ft	80 ft	30,865	115 ft	80 ft	35,274

# Base ballast

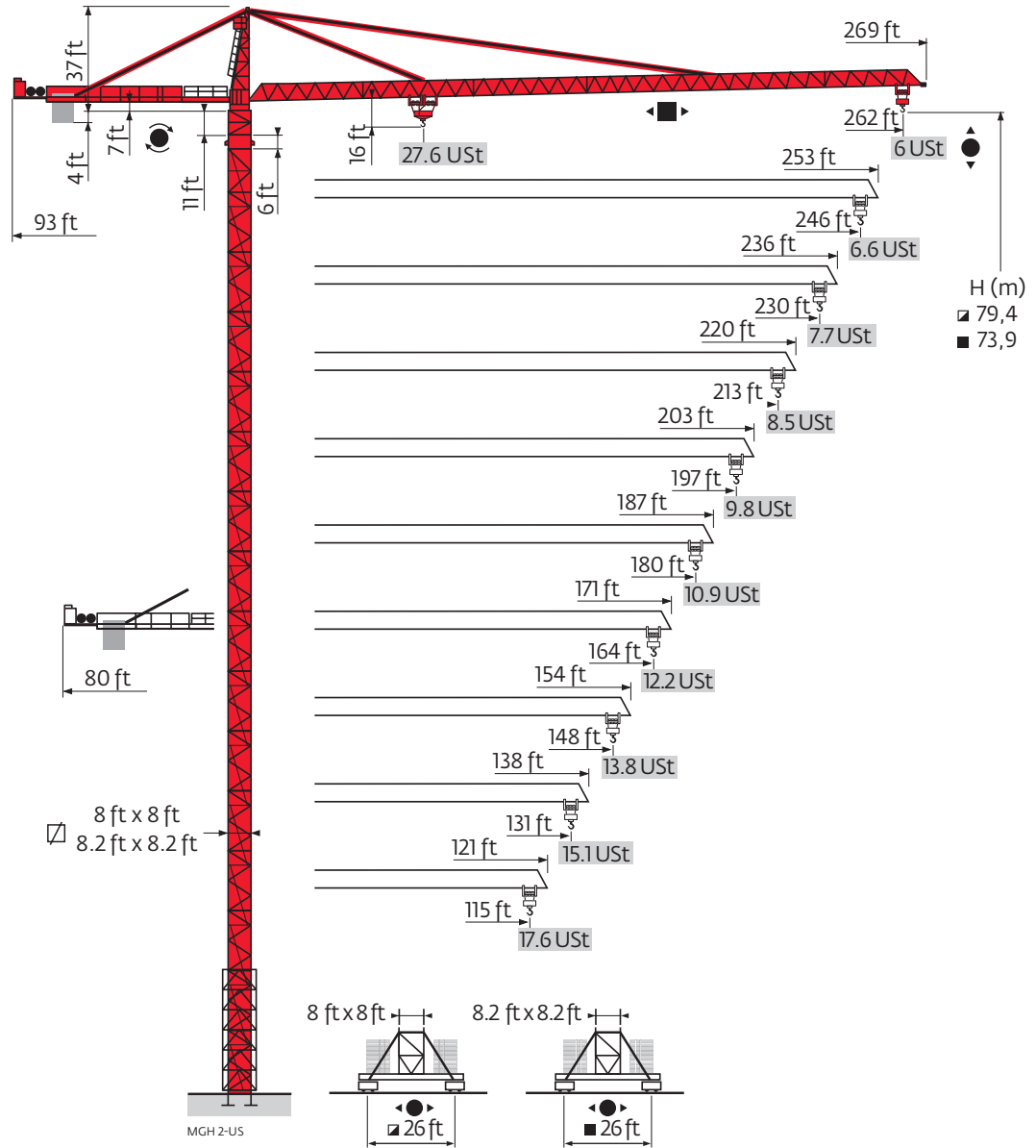
8 ft Y800A		22 USt	H (ft)	260	250	233	217	200	184	168	151	135	118	102	86	69		
			(USt)	119.0	92.6	92.6	79.4	79.4	79.4	79.4	79.4	79.4	79.4	79.4	79.4	79.4		
8 ft J850A		44.1 USt / 115-230 ft / 246-262 ft	H (ft)	295	284	273	257	240	224	207	191	175	158	142	125	109	93	76
			(USt)	105.8	92.6	66.1	26.5	26.5	26.5	26.5	26.5	26.5	26.5	26.5	26.5	26.5	26.5	26.5
8.2 ft Y80A		22 USt	H (ft)	242	223	204	185	166	148	129	110	91						
			(USt)	92.6	92.6	92.6	92.6	92.6	92.6	92.6	92.6	92.6						
8.2 ft Y80A		44.1 USt	H (ft)	221	202	183	164	145	126	107	88							
			(USt)	105.8	105.8	105.8	105.8	105.8	105.8	105.8	105.8							

# Mechanisms

		22 USt					44.1 USt					hp	kW		
															
	270 LVF100	fpm	164	213	305	430	610	82	108	154	213	305	270	200	1745 ft
		USt	22	16.5	11	5.5	2.8	44.1	33.1	22	11	5.5			
	RVF173 Optima +	rpm	0 - 1									3 x 10	3 x 7.5		
	15 DVF16	fpm	0 - 164 (22 USt) - 0 - 220 (8.3 USt) - 0 - 328 (2.8 USt) 0 - 108 (44.1 USt) - 0 - 220 (9 USt) - 0 - 328 (2.8 USt)									15	11		
	J850 A														
 IEC 60204-32															
400 V(+10% -10%) 50 Hz / 480 V(+ 6% -10%) 60 Hz 400 V (+10%-10%) 50 Hz 480 V (+6%-110%) 60 Hz						270 LVF : 240 kVA RVF 173 Optima + : 315 kVA RVF 173 Optima + : 365 kVA									

	Hoisting
	Trolleying
	Slewing
	Traveling

# MD 560 B M25

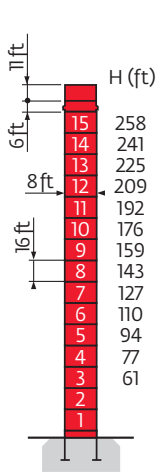


# Mast

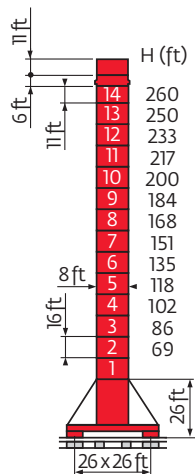
□ 8 ft x 8 ft

🏗️ / 🏗️ 27.6 USt 🏗️ / 🏗️ 27.6 USt

🏗️ 115 - 262 ft



P 800 US

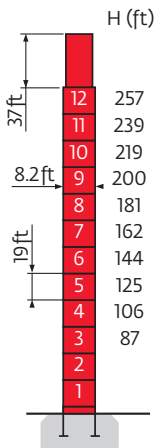


Y 800 A

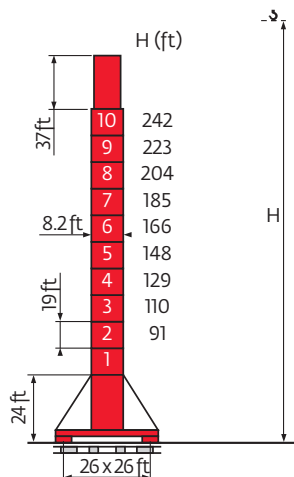
□ 8.2 ft x 8.2 ft

🏗️ / 🏗️ 27.6 USt 🏗️ / 🏗️ 27.6 USt


🏗️ 115 - 262 ft



P 80 A

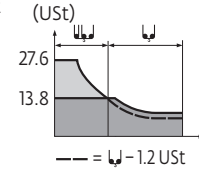


Y 80 A

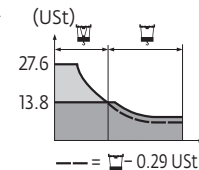
<b>A</b>	Distance between collars
<b>H1</b>	Crane height
<b>P</b>	Crane weight (in service)
<b>R</b>	Horizontal reaction
	See climbing crane

# Load charts

	262 ft	10 ▶	69	72	82	89	98	105	115	123	132	148	164	180	197	213	230	246	262	ft
			27.6	26	22.4	20.5	18.1	16.6	15.0	13.8	13.8	12.1	10.7	9.6	8.6	7.8	7.1	6.5	6	USt
	246 ft	10 ▶	69	72	82	89	98	105	115	124	134	148	164	180	197	213	230	246	ft	
			27.6	26.2	22.6	20.6	18.2	16.9	15.1	13.8	13.8	12.2	10.8	9.7	8.7	7.9	7.2	6.6	USt	
	230 ft	10 ▶		72	82	89	98	105	115	130	140	148	164	180	197	213	230	ft		
			27.6	23.8	21.7	19.3	17.9	16.0	13.8	13.8	13	11.5	10.3	9.3	8.5	7.7	USt			
	213 ft	10 ▶		73	82	89	98	105	115	130	141	148	164	180	197	213	ft			
			27.6	23.9	21.8	19.3	17.9	16.1	13.8	13.8	13.1	11.6	10.4	9.4	8.5	USt				
	197 ft	10 ▶		75	82	89	98	105	115	131	136	147	148	164	180	197	ft			
			27.6	25	22.9	20.3	18.8	16.9	14.3	13.8	13.8	13.7	12.1	10.9	9.8	USt				
	180 ft	10 ▶		76	82	89	98	105	115	131	136	147	148	164	180	ft				
			27.6	25.1	23	20.4	18.8	17	14.4	13.8	13.8	13.8	12.2	10.9	USt					
	164 ft	10 ▶		76	82	89	98	105	115	131	137	148	164	ft						
			27.6	25.2	23.1	20.5	19	17.1	14.6	13.8	13.8	12.2	USt							
	148 ft	10 ▶		76	82	89	98	105	115	131	136	148	ft							
			27.6	25.2	23	20.4	19	17	14.4	13.8	13.8	USt								
	131 ft	10 ▶		76	82	89	98	105	115	131	ft									
			27.6	25.4	23.1	20.5	19.1	17.1	14.6	USt										
	115 ft	10 ▶		76	82	89	98	105	115	ft										
			27.6	25.4	23.1	20.5	19	17.1	USt											



	262 ft	10 ▶	70	72	82	89	98	105	115	126	129	131	148	164	180	197	213	230	246	262	ft
			27.6	26.5	22.9	20.9	18.5	17.2	15.4	13.8	13.8	13.4	11.7	10.3	9.1	8.2	7.4	6.6	6.1	5.5	USt
	246 ft	10 ▶	70	72	82	89	98	105	115	128	130	131	148	164	180	197	213	230	246	ft	
			27.6	26.7	23.1	21.2	18.7	17.4	15.7	13.8	13.8	13.7	11.8	10.4	9.3	8.3	7.5	6.7	6.2	USt	
	230 ft	10 ▶		73	82	89	98	105	115	131	134	136	148	164	180	197	213	230	ft		
			27.6	24.4	22.3	19.7	18.3	16.5	14.1	13.8	13.8	12.6	11	9.8	8.8	8	7.3	USt			
	213 ft	10 ▶		74	82	89	98	105	115	131	135	137	148	164	180	197	213	ft			
			27.6	24.5	22.4	19.8	18.4	16.6	14.2	13.8	13.8	12.6	11.1	9.9	8.9	8	USt				
	197 ft	10 ▶		77	82	89	98	105	115	131	140	143	148	164	180	197	ft				
			27.6	25.6	23.5	20.8	19.3	17.4	14.9	13.8	13.8	13.2	11.7	10.5	9.4	USt					
	180 ft	10 ▶		77	82	89	98	105	115	131	141	143	148	164	180	ft					
			27.6	25.7	23.6	20.9	19.4	17.5	15	13.8	13.8	13.3	11.8	10.5	USt						
	164 ft	10 ▶		77	82	89	98	105	115	131	141	144	148	164	ft						
			27.6	25.8	23.7	20.9	19.5	17.5	15	13.8	13.8	13.3	11.8	USt							
	148 ft	10 ▶		77	82	89	98	105	115	131	141	144	148	ft							
			27.6	25.8	23.6	20.9	19.5	17.5	15	13.8	13.8	13.3	USt								
	131 ft	10 ▶		76	82	89	98	105	115	131	ft										
			27.6	25.5	23.4	20.7	19.2	17.3	15.1	USt											
	115 ft	10 ▶		76	82	89	98	105	115	ft											
			27.6	25.5	23.4	20.7	19.3	17.6	USt												












# Counter-jib ballast





8818 lb - 13,228 lb		
		(lb)
262 ft	93 ft	79,366
246 ft	93 ft	74,957
230 ft	93 ft	70,548
213 ft	93 ft	61,729
197 ft	93 ft	61,729
180 ft	93 ft	57,320
164 ft	80 ft	61,729
148 ft	80 ft	61,729
131 ft	80 ft	44,092
115 ft	80 ft	39,683

# Base ballast

	8 ft	Y800A		H (ft)	260	250	233	217	200	184	168	151	135	118	102	86	69
				(USt)	119	93	93	79	79	79	79	79	79	79	79	79	79
	8.2 ft	Y80A		H (ft)	242	223	204	185	166	148	129	110	91				
				(USt)	106	106	106	106	106	106	106	106	106				

# Mechanisms

		27.6 USt / 27.6 USt											hp	kW	
															
	100 LVF 63 Optima	fpm	98	125	184	236	256	49	62	92	118	128	100	75	2382 ft
		USt	13.9	10.4	6.9	3.4	3	27.6	20.7	13.9	6.8	6			
	RVF183 Optima +	rpm	0 0.7									3 x 15	3 x 11		
	10 DVF 10	fpm	0-210 (27.6 USt) - 0-328 (13.8 USt) - 0-361 (6.9 USt)									10	7.4		
	Y 800 A RT 584 A1 2V	fpm	44 - 89									8 x 7	8 x 5.2		
 IEC 60204-32						 kVA									
400 V (+10% -10%) 50 Hz / 480 V (+6% -10%) 60 Hz						100 LVF : 120 kVA									

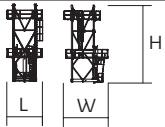


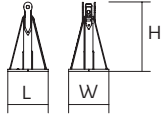
	Hoisting
	Trolleying
	Slewing
	Traveling



# Component weights

Component Weights		L (ft)	W (ft)	H (ft)	lb (+/- 5%)	
Counter-jib		38.4	13.5	6.4	14,308	
		13.8	6.6	6.4	4365	
		36.2	15.9	6.8	10,858	
Towerhead		11	6.5	32.23	19,731	
Cab	Ultra View	16.4	7.5	8.2	4090	
Pivot	8 ft 8.2 ft	12.1 12.1	8.1 8.1	12.7 12.7	24,670 24,670	
Hoisting winch (+ rope)	100 LVF	10.4	5.2	5.7	9138	
Hoisting winch (+ rope)	270 LVF/ 320 LVF	16.7	7.5	7.3	22,256	
Jib section		①	34	9.7	10.2	11,354
		② 10 DVF	33.9	6.2	7.7	10,737
		② 15 DVF	33.9	6.2	7.7	11,409
		③	33.5	6.2	7.9	6537
		④	33.6	6.2	7.6	5897
		⑤	33.6	6.2	7.6	6162
Jib section		⑥	17.5	6.2	7.2	3748
		⑦	17.5	6.2	6.7	2,271
		⑨	17	6.2	6.5	1202
		⑩	16.9	6.2	6.5	1102
Trolley	44.1 Ust	13	7.2	5.5	3131	
Trolley	22 Ust	8.5	7.3	5.5	1645	
Hookblock		44.1 Ust	8.1	1.2	9.4	4050
		22 Ust	5.5	0.9	8	1336

# Component weights

		L (ft)	W (ft)	H (ft)	kg (+/- 5%)
T850A climbing cage (halves)		33.3 33	15.3 15.4	10.8 8.4	20,348 8135
KRMT 849A KMT 850.10A K850./KR800A1		17.2 17.5 17.5	8.4 8.3 8.3	8.3 8.2 8.2	9017 12,015 11,905
KM850.10B1 K850/KR800B1		33.8 33.6	8.1 8.3	8.3 8.2	22,200 21,451
KRMT 849C KMT 850.10C		11.7 12	8.4 8.3	8.3 8.2	7066 9325
P800US P850US		2.5 2.3	2.5 2.3	5.9 5.5	1477 2127

# Notes

# Notes

Constant improvement and engineering progress make it necessary that we reserve the right to make specification, equipment and price changes without notice. Illustrations shown may include optional equipment and accessories, and may not include all standard equipment.



[www.manitowoc.com](http://www.manitowoc.com)

## Manitowoc Cranes

### Regional Headquarters

#### Americas

Manitowoc, Wisconsin, USA  
Tel: +1 920 684 6621  
Fax: +1 920 683 6277

Shady Grove, Pennsylvania, USA  
Tel: +1 717 597 8121  
Fax: +1 717 597 4062

#### Europe, Middle East, Africa

Ecully, France  
Tel: +33 472 18 2020  
Fax: +33 472 18 2000

#### China

Shanghai, China  
Tel: +86 21 6457 0066  
Fax: +86 21 6457 4955

#### Greater Asia-Pacific

Singapore  
Tel: +65 6264 1188  
Fax: +65 6862 4040

Potain MD 560 B  
Code 11-004-.75M-0211