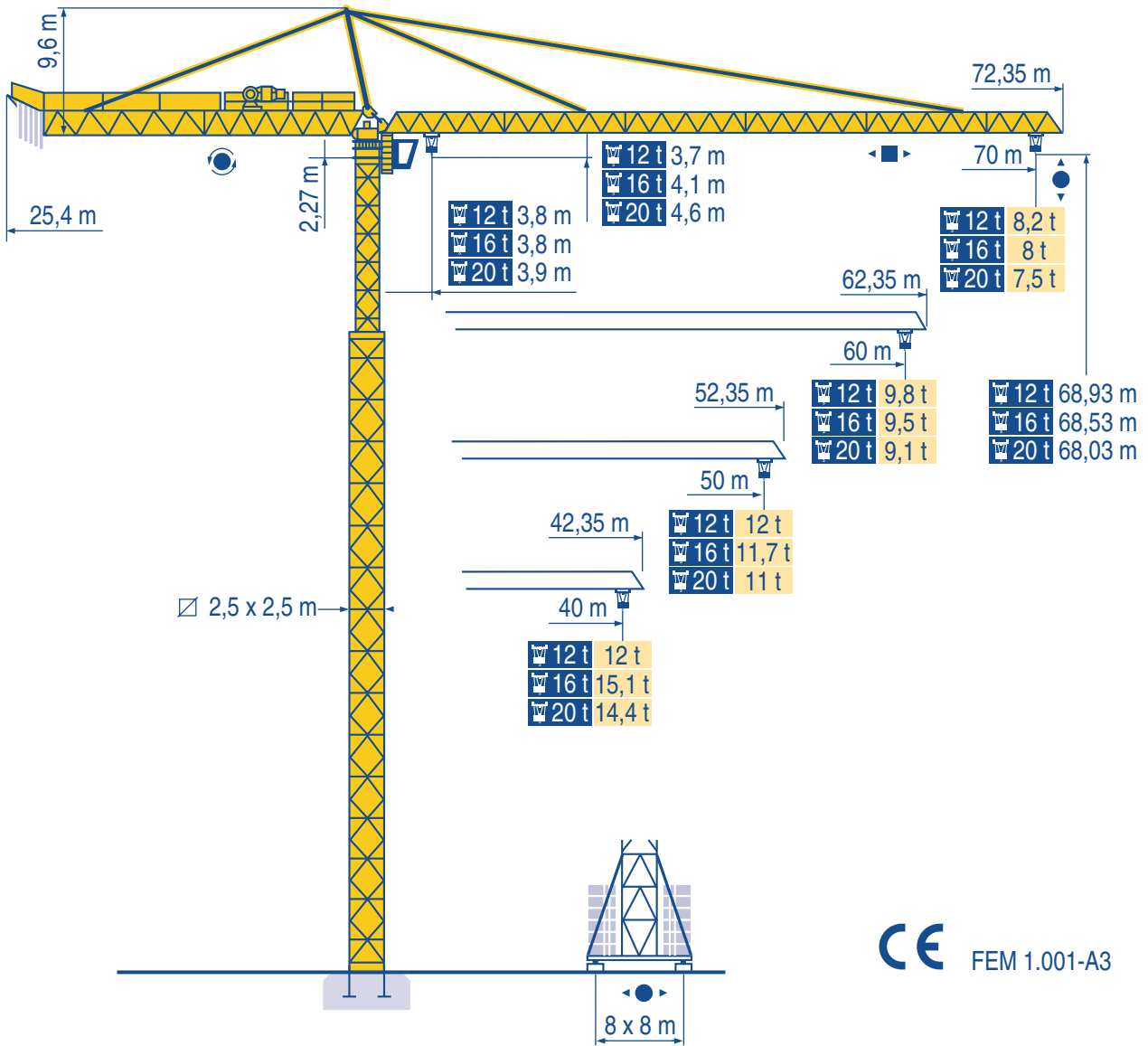


MD 600

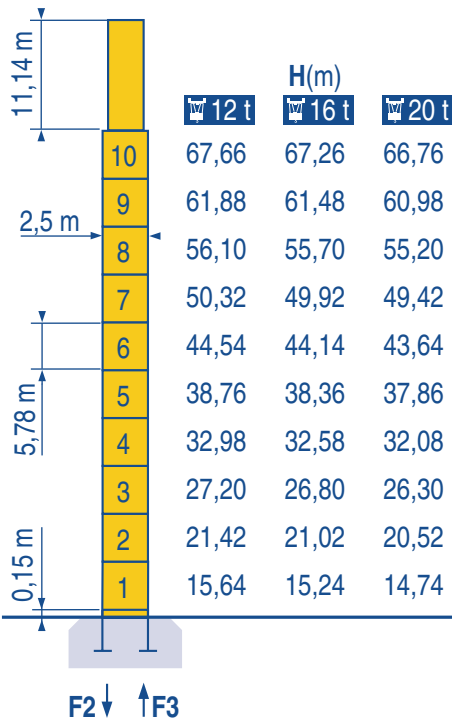


- HD HDM
- HDT
- GTMR
- CITY CRANE
- TOPKIT MD MAXI MD
- MAXI TOPKIT
- Topless MDT
- MR

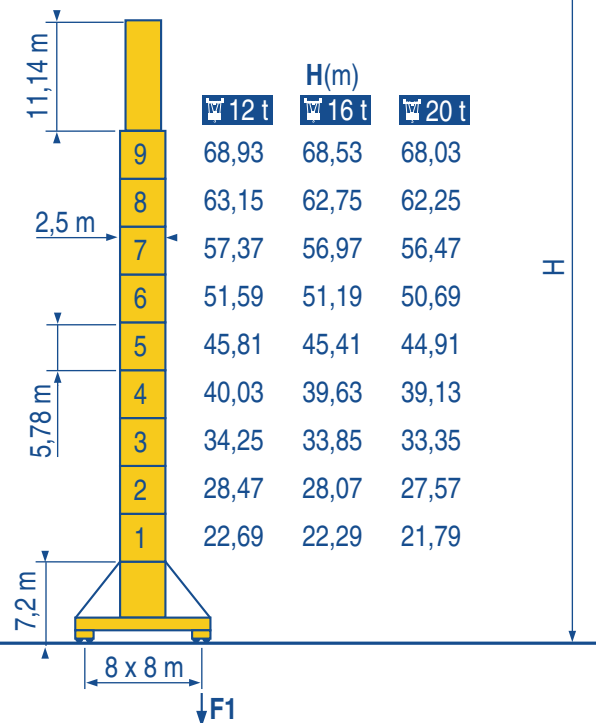
CE FEM 1.001-A3



2,5 m x 2,5 m



PA 867



YA 866

F2	12 t	● 199 t	■ 144 t
	16 t	● 202 t	■ 143 t
	20 t	● 204 t	■ 141 t

F3	12 t	● 120 t	■ 71 t
	16 t	● 121 t	■ 70 t
	20 t	● 120 t	■ 67 t

▲	12 t	119 t
	16 t	119 t
	20 t	121 t

F1	12 t	● 121 t	■ 97 t
	16 t	● 123 t	■ 97 t
	20 t	● 125 t	■ 97 t

▲	12 t	136 t
	16 t	136 t
	20 t	138 t

LNF 1

● Réactions en service
■ Réactions hors service
▲ A vide sans lest (ni train de transport) avec flèche et hauteur maximum.

F

Reactions in service
Reactions out of service
Without load, ballast (or transport axles), with maximum jib and maximum height.

GB

Reazioni in servizio
Reazioni fuori servizio
A vuoto, senza zavorra (ne assali di trasporto) con braccio massimo e altezza massima.

I

● Reaktionskräfte in Betrieb
■ Reaktionskräfte außer Betrieb
▲ Ohne Last, Ballast (und Transportachse), mit Maximalausleger und Maximalhöhe.

D

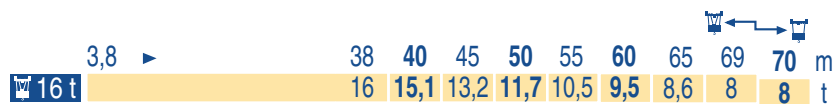
Reacciones en servicio
Reacciones fuera de servicio
Sin carga, sin lastre, (ni tren de transporte), flecha y altura máxima.

E

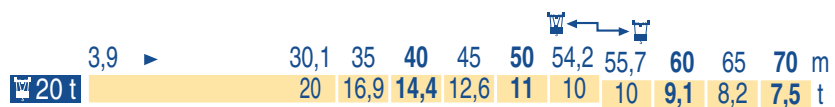
工作状态下的反应
非工作状态下的反应
空载无压重也无运输车
有吊臂和最大高度

C

40/50/60/70 m

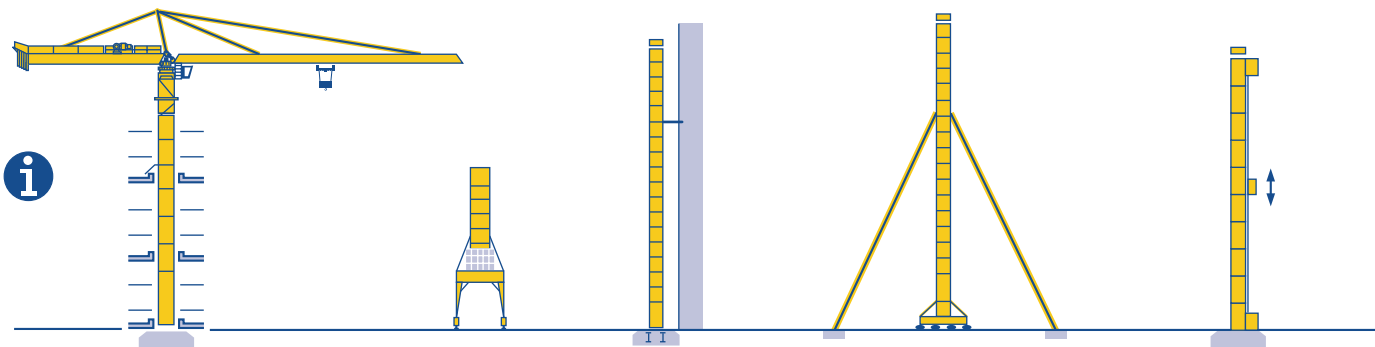


16t - 12t = 0,3 t



20t - 16t = 0,35 t

LNF 1



LNF 1

i Nous consulter

Consult us

Consultateci

i Auf Anfrage

Consultarnos

请向我方咨询

										ch - PS hp	kW	
		55 RCS 30	m/min	0 → 34	0 → 68	–	0 → 17	0 → 34	–	55	40,5	365 m > 365
			t	6	3	–	12	6	–			
		70 RCS 30 C	m/min	0 → 40	0 → 80	–	0 → 20	0 → 40	–	70	51	565 m > 565
	t	6	3	–	12	6	–					
	120 LMD 30 S	m/min	0 → 65	0 → 130	0 → 260	0 → 32,5	0 → 65	0 → 130	120	88	600 m > 600	
	t	6	3	1,5	12	6	3					
	55 RCS 40	m/min	0 → 25	0 → 50	–	0 → 12,5	0 → 25	–	55	40,5	468m > 468	
		t	8	4	–	16	8	–				
	120 LMD 40 S	m/min	0 → 48	0 → 97	0 → 194 ▽	0 → 24	0 → 48	0 → 97 ▽	120	88	593 m > 593	
		t	8	4	2	16	8	4				
	120 LMD 50 S	m/min	0 → 39	0 → 78	0 → 156 ▽	0 → 19,5	0 → 39	0 → 78 ▽	120	88	545 m > 545	
		t	10	5	2,5	20	10	5				
	15 DRC 8	m/min	0 - 4 → 43 - 86						14	10,3		
	RTV	tr/min U/min rpm	0 → 0,7						2 x 16	2 x 12		
	RT 664 A2B - 2V	m/min	16 - 32						6 x 7	6 x 5,2		
	TCV 669 ARC	m/min	10 - 50						6 x 6,8	6 x 5		
	H ≤ 40,03 m											
H ≤ 39,63 m												
H ≤ 39,13 m												

CEI 38	IEC 38	kVA	
400 V (+6% -10%) 50 Hz		55 RCS : 90 kVA 70 RCS : 110 kVA 120 LMD : 160 kVA	84/534 - 87/405

LNF 1

	Levage	F	Hoisting	GB	Sollevamento	I
	Distribution		Trolleying		Distribuzione	
	Orientation		Slewing		Rotazione	
	Translation		Travelling		Traslazione	
	Survitesses uniquement en descente		Lowering super speed		Survelocità solo in discesa	
	Conforme aux directives CEE 84/534 et 87/405 sur le niveau acoustique		In compliance with the EEC 84/534 and 87/405 Instructions on noise level		Conforme alle direttive CEE 84/534 e 87/405 sul livello acustico	
	Nous consulter		Consult us		Consultateci	
	Heben	D	Elevación	E	起升	C
	Katzfahren		Distribución		变幅	
	Schwenken		Orientación		回转	
	Kranfahren		Traslación		行走	
	Schnellgang nur für senken		Sobrevelocidad solo en bajada		具有下降超速性能	
	Gemäss EWG-Richtlinien 84/534 und 87/405 für den Schall-Leistungspegel		Conforme con las directivas CEE 84/534 y 87/405 sobre el nivel acustico		符合 CEE 84/534 - CEE 87/405 声晌度规定	
	Auf Anfrage		Consultarnos		请向我方咨询	

Réf. 1997.47 LNF 5



18.Rue de Charbonnières, B.P. 173
F-69132 ECULLY Cedex
Tél. (33)04.72.18.20.20
Fax (33)04.72.18.20.00
http://www.potain.com
E-mail : mkt@potain.fr

MD 600
Copyright.Reproduction interdite © POTAIN 1997

Deutschland
POTAIN GmbH Tel : 06.105.704.0
Italia
POTAIN S.p.A. Tel : 0.331.49.33.11
Singapore
POTAIN PTE LTD Tel : (00.65) 227.1550