

## Model Type GR70-D

### The RIGANTE Mobile Crane GR70-D – 7,000 Kg. Specification

- Equipped with a double sliding and extending hydraulic arms.
- Total utility run of about 3,20 mt.
- a 31 Kw. Diesel Engine air cooling, HATZ made, with an electric starter unit.
- A dual hydraulic rear-wheel drive system and a reducer unit.
- The emergency anterior hydraulic brakes is located anterior wheels.

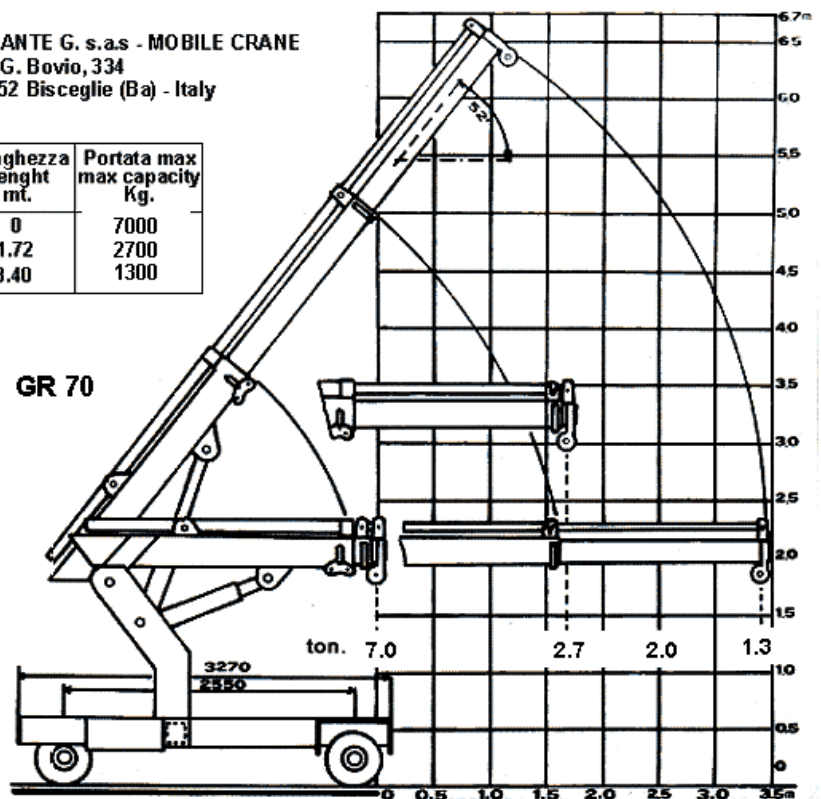


### Diagramma Portate - Test-chart

RIGANTE G. s.a.s - MOBILE CRANE  
Via G. Bovio, 334  
70052 Bisceglie (Ba) - Italy

Lunghezza Lenght mt.	Portata max max capacity Kg.
0	7000
1.72	2700
3.40	1300

GR 70



- Hydraulic lifting and extending arm circuit system with safe stopping valves.
- Operator safety cabin "CE" approved.
- Power steering wheel system mounted on a rotating platform.
- Operating utility coverage area of about L. 4,50 x 1,90 H. 2,40 mt.

P.s. Note: Our cranes are built for hard surface machinery only.

RIGANTE TECNOLOGIE di M.D. – Address : Via G.Bovio 334 I- 76011 BISCEGLIE ( BA ) ITALY  
Tel. +39 (0) 80 – 3955781 - FAX +39 (0) 80 – 2140260

P.Iva / VAT : I - 07392440728 – [www.rigante.it](http://www.rigante.it) [info@rigante.it](mailto:info@rigante.it)