

ELITE
STATIONARY MOUNT

ROTOBEC
TOUGH HANDLING EQUIPMENT



THE QUICKEST LOADER OUT THERE
UNMATCHED AGILITY. UNPARALLELED PRECISION.

TOUGH HANDLING EQUIPMENT

GET THE MOST OUT OF YOUR EQUIPMENT. Speed, precision and agility, all packaged up into one tough handling machine.



The ELITE is without question the toughest, most versatile, longest lasting knuckle boom loader of its size. With the industry's lowest total cost of ownership, the ELITE is quickly becoming the favorite of owners and operators around the globe. Available in a variety of configurations, we have a solution for every conceivable application. The ELITE and all of its major components are designed and manufactured by Rotobec right here in North America. If you are looking to lift more in less time than ever before, look no further, the ELITE is your only option.



8,800 LB MAX LIFT CAPACITY

40 HP HIGH EFFICIENCY ELECTRIC MOTOR

22 FT HEAVY DUTY BOOMS (STANDARD)

27 INCH SLEWING RING

3,000 PSI OPERATING PRESSURE

8 SEC MAIN BOOM CYCLE

ULTIMATE SAFETY AND EFFICIENCY

Owners and operators alike, have come to truly appreciate the efficiency and simplicity of the ELITE. When it comes to loader operating speed and precision, the ELITE stands in a class of its own. In many applications, the use of an ELITE 910 can streamline your operation so drastically that the machine will pay for itself in cost savings in only a few months.

INCREASE YOUR PAYLOAD

The cost of over and under weight truck loads can add up over time. The ELITE is the ideal solution for eliminating those wasted expenses by maximizing the weight in the trailers leaving your job site.

SAFETY FIRST

The safety of your job site is important to us. The ELITE provides a safe alternative for untangling material jams in mills and other feeding applications. Available remote operation can keep workers safe from any environmental dangers.

GREEN MACHINE

The 40 hp electric motor gives you all the power you need, while saving you a ton on your monthly energy bills. The power unit can be mounted remotely or integrated onto the loader platform.

SMOOTH MOVEMENT

The 3,000 psi operating pressure allows the ELITE to achieve unmatched levels of precision making it a dream to operate. Whether you're a rookie operator or a seasoned vet, this loader will make even the most inexperienced operator look like a pro.

NO TIME FOR DOWNTIME

The ELITE and nearly all of its components are designed and manufactured at our North American production facilities. We are dedicated to providing you with the most durable and reliable loaders on the market. Because we manufacture everything in house, our parts availability is second to none and our service team is committed to ensuring that your loader is running at maximum capacity at all times.

QUALITY COMPONENTS

Each component of the ELITE is manufactured in house using the highest quality materials. Our components are built with one purpose: To outperform and outlast the competition.

SERVICE MADE SIMPLE

Rotobec engineers have designed the ELITE in a way that makes it incredibly simple to service. With no need for special tools, the ELITE can even be serviced in the field, maximizing your machine uptime.









ENDLESS POSSIBILITIES

The ELITE is a unique machine, and with several configuration models available, there is not much that it can't do. If you have a special application or need, let us know as we offer complete customization. It's your loader built the way you want it.

CONFIGURATIONS

SM-X

Power unit: On loader
Operator station: On loader

SM-R

Power unit: Remote
Operator station: Remote

SM-W

Power unit: On loader
Operator station: Remote

SM-H

Power unit: Remote
Operator station: On loader

CUSTOMIZATION

Rotobec has been designing and manufacturing loaders for 40 years. During that time, our custom loader division has worked on several projects for customers who had unique requirements that the competition could simply not meet. Our team of engineers worked closely with these customers to provide them with a solution to meet those needs.

If you have a requirement that is not met by our current products let us know. Rotobec is open to any custom project and we are always looking for a new challenge.

OPERATOR CAB (OPTIONAL)

STANDARD:

- Ergonomic seat
- Dimensions: 38" x 52"
- Wipers
- Cab fan
- 2 forward facing lights

OPTIONAL:

- 4,000 W electric heater
- Air conditioning
- Windshield protection grid
- am/fm/cd radio

ADDITIONAL OPTIONS

BOOMS:

- M21
- M22
- M25
- MT26 (telescopic)
- MT27 (telescopic)
- MT29 (telescopic)

OTHER:

- Anchor kit
- 42" Pedestal riser
- Adjustable swing lock to set swing angle

HYDRAULIC SYSTEM

Operating pressure	3,000 psi
Pump flow	2 x 20 gpm
Features	<ul style="list-style-type: none"> Double function joystick Heavy duty hydraulic accumulator

SWING SYSTEM

Rotation	Continuous 360°
Slewing ring	27" outside diameter
Rotation speed	9.5 rpm
Swing torque	Theoretical: 15,987 ft. lb @ 3,000 psi Actual: Estimated at 13,589 ft. lb
Features	<ul style="list-style-type: none"> Adjustable swing lock (optional)

CYLINDERS

Main boom	5" bore, 3" rod
Stick boom	5" bore, 3" rod
Features	<ul style="list-style-type: none"> Bolt-on head Wear ring Chrome plated tempered steel rod

POWER UNIT

Engine	40 hp high efficiency electric motor
Electrical system	12 VDC outlet available
Features	<ul style="list-style-type: none"> 600 v, 3 phase, 60 Hz Electric panel w/ 2 x 15 A/120 v outlets Cut off switch Double gear pump Thermostat oil cooler 44 gal oil tank

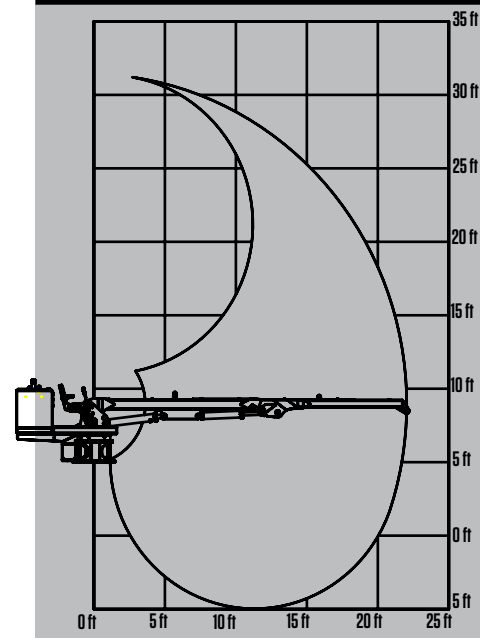
BOOM LENGTH OPTIONS

Standard	22'
Non-telescopic	21', 25'
Telescopic	26', 27', 29'

BOOM

Structure (Main boom)	Rectangular 6" x 8" structure made of high tensile steel
Structure (Stick boom)	Rectangular 6" x 6" structure made of high tensile steel
Pivots	2" diameter heat-treated and chromed pins mounted on bronze bushings
Complete motion	Main: 8 sec w/ 20 gpm Stick: 7 sec w/ 20 gpm
Standard reach	22' (Main: 12' Stick: 10')
Features	<ul style="list-style-type: none"> Designed for closer access to loader pedestal Induction tempered, chrome steel pins on bronze bushings 2 x 55 W lights on stick boom Telescopic booms activated by electric button and proportionately controlled by lever

BOOM SWEEP ELITE 910 SM- 22'



LIFT CAPACITY (lb)

		DISTANCE FROM CENTER OF ROTATION (ft)			
		5	10	15	20
ELITE 910 SM 22'	HEIGHT (ft)				
	20			3,460*	
	15			5,180	
	10		6,690	5,390	4,410
	5	8,800**	8,120	5,780	4,360
	0	3,730*	8,800	5,830	3,960
	-5	6,260*	7,590	4,970	2,200

		DISTANCE FROM CENTER OF ROTATION (ft)			
		5	10	15	20
ELITE 910 SM 25'	HEIGHT (ft)				
	20			4,780	
	15			4,750	4,130
	10		6,450	5,090	4,190
	5	8,580**	7,900	5,550	4,270
	0	2,250*	8,580	5,720	4,140
	-5	4,310*	7,610	5,160	3,490
	-10		5,100	3,530	

* Limited by stick boom hydraulic capacity

** Max recommended lift capacity

*** Lift capacities calculated at 100% operating pressure

**** We reserve the right to change specification and improve our products without notice or obligation

ROTOBEC LOCATIONS

CANADA EAST/
INTERNATIONAL
Sainte Justine, QC
Tel: 418.383.3002

USA EAST, CENTRAL
Littleton, NH
Tel: 603.444.2103

USA SOUTH
Dallas, TX
Tel: 972.242.9516

USA/CANADA
WEST
Kelowna, BC
Tel: 250.765.1161

BRAZIL
Curitiba, Paraná
Tel: 41.98852.5999

ROTOBEC
TOUGH HANDLING EQUIPMENT