

HORIZON
STATIONARY MOUNT

ROTOBEC
TOUGH HANDLING EQUIPMENT



**WHEN THE GOING GETS TOUGH...
THE HORIZON GETS GOING**
SUPERIOR DURABILITY. EXCEPTIONAL PRECISION.



The HORIZON is a unique solution for heavy duty applications requiring the precision of the ELITE, combined with the strength and durability of a much larger loader. Built using the highest quality materials, the HORIZON will not only survive, but thrive in even the most demanding environments. Equipped with standard dual swing motors and an integrated oil cooler, this loader can be pushed to the limit day in and day out, and it will continue to give you all you need and more. Reduce your downtime, increase your efficiency and add to your bottom line. It really is that simple.

TOUGH HANDLING EQUIPMENT

TOUGH TIMES NEVER LAST, BUT TOUGH MACHINES DO. Speed, precision, and agility, all packaged up into one tough handling machine.



10,550 LB MAX LIFT CAPACITY

32 INCH SLEWING RING

75 HP HIGH EFFICIENCY ELECTRIC MOTOR

3,200 PSI OPERATING PRESSURE

23 FT HEAVY DUTY BOOM (STANDARD)

9 SEC MAIN BOOM CYCLE

GET THE RELIABILITY YOU DESERVE

TRIED, TESTED AND TRUE

The HORIZON has been designed to take a beating and come back fighting. Each of our loaders is tested extensively at our production facility before being shipped to our customers, because we understand the importance of reliability. Your productivity is our number one priority.

GREEN MACHINE

The 75 hp electric motor gives you all the power you need while saving you a ton on your monthly energy bills. The power unit can be mounted remotely or integrated onto the loader platform, providing an unmatched level of flexibility.

SMOOTH MOVEMENT

Similar to the ELITE, the HORIZON provides users with amazingly smooth operation. The 3,200 psi operating pressure allows the HORIZON to achieve unmatched levels of precision. Spend less time repositioning your loader and more time on what matters most: Working.

SAFETY FIRST

The HORIZON provides a safe alternative for untangling material jams in mills and other feeding applications. Available remote operation can keep workers safe from any environmental dangers.

NO TIME FOR DOWNTIME

The HORIZON and nearly all of its components are designed and manufactured at our North American production facilities. We are dedicated to providing you with the most durable and reliable loaders on the market. Because we manufacture everything in house, our parts availability is second to none and our service team is committed to ensuring that your loader is running at maximum capacity at all times.

QUALITY COMPONENTS

Each component of the HORIZON is manufactured in house using the highest quality materials. Our components are built with one purpose: To outperform and outlast the competition.

SERVICE MADE SIMPLE

Rotobec engineers have designed the HORIZON in a way that makes it incredibly simple to service. With no need for special tools, the loader can even be serviced in the field.









ENDLESS POSSIBILITIES

The HORIZON is a unique machine, and with several configuration models available, there is not much that it can't do. If you have a special application or need, let us know. We offer complete customization, so it's your loader, your way.

CONFIGURATIONS

SM-X

Power unit: On loader
Operator station: On loader

SM-R

Power unit: Remote
Operator station: Remote

SM-W

Power unit: On loader
Operator station: Remote

SM-H

Power unit: Remote
Operator station: On loader

CUSTOMIZATION

Rotobec has been designing and manufacturing loaders for 40 years. During that time, our custom loader division has worked on several projects for customers who had unique requirements that the competition could simply not meet. Our team of engineers worked closely with these customers to provide them with a solution to meet those needs.

If you have a requirement that is not met by our current products, let us know. Rotobec is open to any custom project and we are always looking for a new challenge.

OPERATOR CAB (OPTIONAL)

STANDARD:

- Ergonomic seat
- Dimensions: 38" x 52"
- Wipers
- Cab fan
- 2 forward facing lights

OPTIONAL:

- 4,000 W electric heater
- Air conditioning
- Windshield protection grid
- am/fm/cd radio

ADDITIONAL OPTIONS

BOOMS:

- M23
- M25
- MT27 (telescopic)
- MT28 (telescopic)

OTHER:

- Anchor kit
- Adjustable swing lock to set swing angle
- Double pump
- Mounting kit

HYDRAULIC SYSTEM

Operating pressure	3,200 psi
Pump flow	2 x 23 gpm
Features	<ul style="list-style-type: none"> Double function joystick Heavy duty hydraulic accumulator

SWING SYSTEM

Rotation	Continuous 360°
Slewing ring	32" outside diameter
Rotation speed	8.8 rpm
Features	<ul style="list-style-type: none"> Pedal activated rotation Double function joysticks Adjustable swing lock (optional)

CYLINDERS

Main boom	5" bore, 3" rod
Stick boom	5" bore, 3" rod
Features	<ul style="list-style-type: none"> Bolt-on head Wear ring Chrome plated tempered steel rod

POWER UNIT

Engine	75 hp high efficiency electric motor
Electrical system	12 VDC outlet available
Features	<ul style="list-style-type: none"> 600 v, 3 phase, 60 Hz Electric panel w/ 2 x 15 A/ 120 v outlets Cut off switch Double gear pump Thermostat oil cooler 99 gal oil tank

BOOM LENGTH OPTIONS

Standard	23'
Non-telescopic	25'
Telescopic	27', 28'

* Limited by stick boom hydraulic capacity

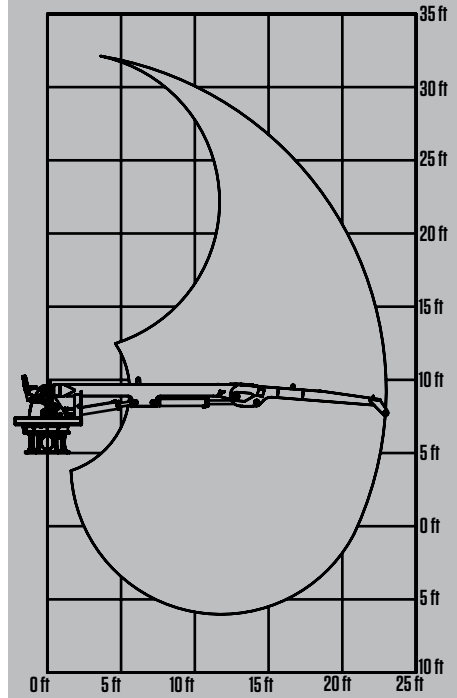
** Lift capacities calculated at 100% operating pressure

*** We reserve the right to change our specifications and improve our products without notice or obligation

BOOM

Structure	Rectangular 6" x 8" structure made of high tensile steel
Pivots	3" diameter heat-treated and chromed pins mounted on bronze bushings
Complete motion	Main: 9 sec w/ 22 gpm Stick: 8 sec w/ 22 gpm
Standard reach	23' (Main: 13'/ Stick: 10')
Features	<ul style="list-style-type: none"> Designed for closer access to loader pedestal Induction tempered, chrome steel pins on bronze bushings 2 x 55 W lights on stick boom Telescopic booms activated by electric button and proportionately controlled by lever

BOOM SWEEP HORIZON 920 SM-H 23'



LIFT CAPACITY (lb)

		DISTANCE FROM CENTER OF ROTATION (ft)				
HORIZON 920 SM-H 23'	HEIGHT (ft)	5	10	15	20	25
	25	6,100*				
	20			5,650		
	15			5,400	4,400*	
	10		7,120	5,840	5,010	
	5		9,280	6,560	5,150	
	0	2,580*	10,550	6,970	5,060	
	-5	5,910*	9,810	6,500	4,100	
	-10		6,930	4,390		

		DISTANCE FROM CENTER OF ROTATION (ft)				
HORIZON 920 SM-H 25'	HEIGHT (ft)	5	10	15	20	25
	25			5,038		
	20			5,082	4,642	
	15		7,029	5,643	4,796	
	10		9,229	6,435	5,038	3,344*
	5	1,694*	10,494	6,919	5,104	
	0	4,543*	9,889	6,633	4,642	
	-5		7,546	5,170		

ROTOBEC LOCATIONS

CANADA EAST/
INTERNATIONAL
Sainte Justine, QC
Tel: 418.383.3002

USA EAST, CENTRAL
Littleton, NH
Tel: 603.444.2103

USA SOUTH
Dallas, TX
Tel: 972.242.9516

USA/CANADA
WEST
Kelowna, BC
Tel: 250.765.1161

BRAZIL
Curitiba, Paraná
Tel: 41.98852.5999

ROTOBEC
TOUGH HANDLING EQUIPMENT

Courtesy of Crane Market