



SANY

STC1000C TRUCK CRANE

100t Lifting Capacity



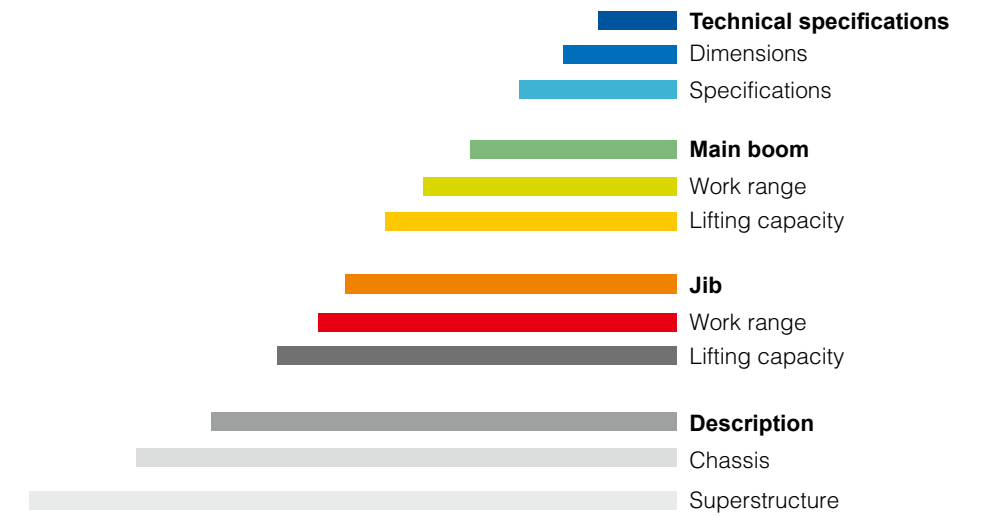
60m
full extension
boom

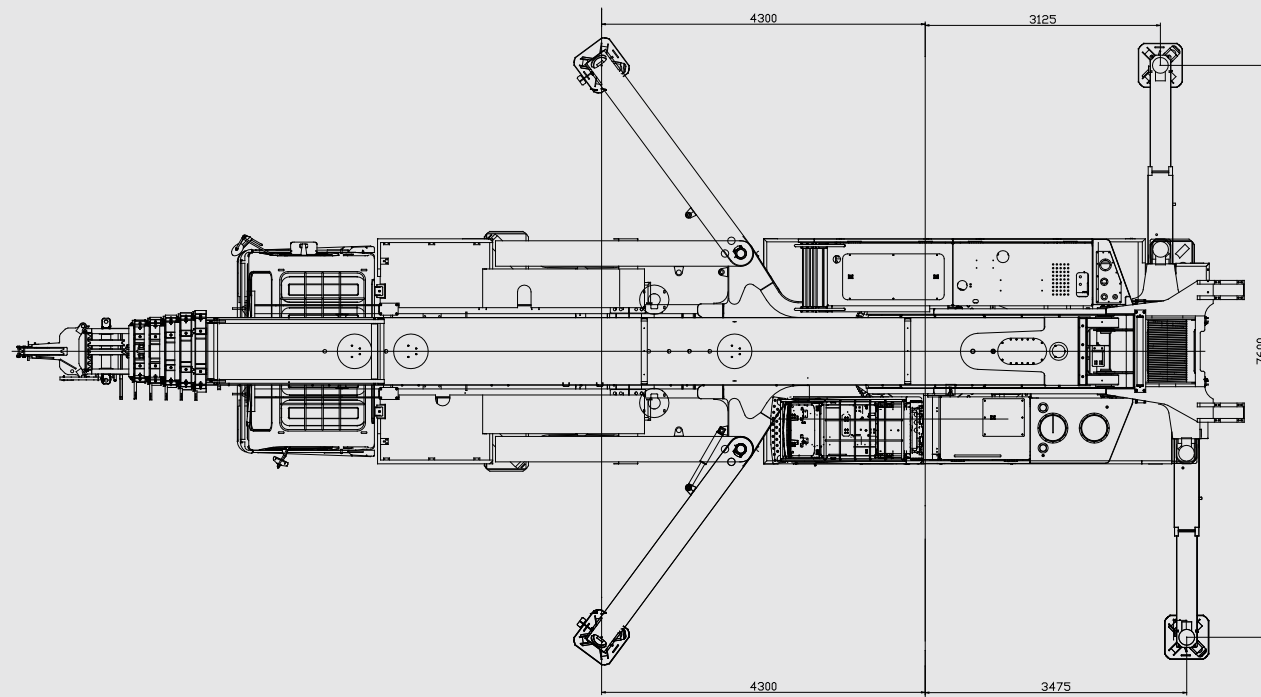
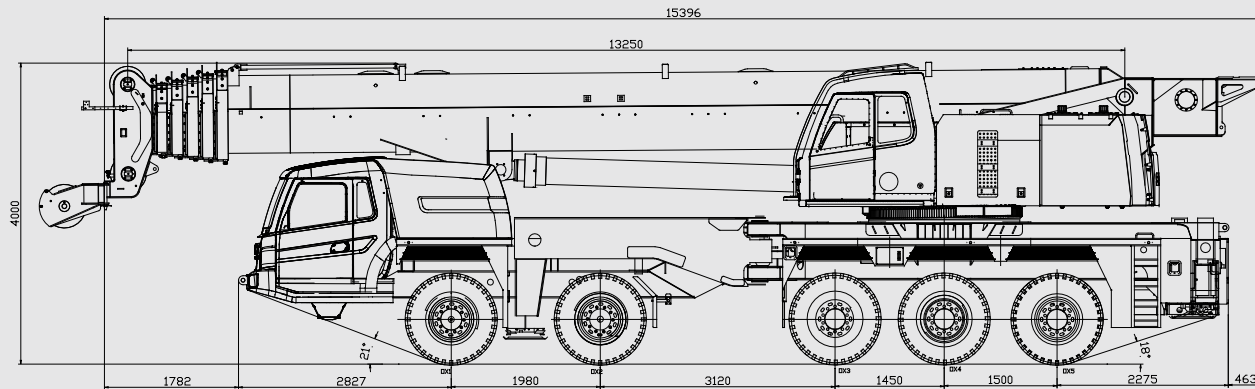
78.1
max. lifting
height

1. 5 axles, max. rated lifting capacity 100t;
2. U-mode boom, full extension 60m, the truck crane for longest boom and most axles;
3. Unique outrigger mode, good stability;
4. Unique frame, light but good rigidity;
5. Unique counterweight travelling mechanism to improve distance lifting capacity;
6. Optimal control, good slow motion and speed;
7. Wide cab, Euro III 、 Euro IV engine for option;
8. Hydraulic pump, motor, valve these main hydraulic parts are international brand such as Parker, Rexroth;
9. Sany-developed SYMC, Finland EPEC special controller for construction machinery, accurate control and high reliability;
10. Sweden SCC large screen color display, full touch screen, high resolution and high fine definition;



The first 5-axle and 6 section boom truck crane with 100T lifting capacity in domestic





Technical Parameters

Category	item	unit	parameter	
Dimension parameter	Overall length	mm	15396	
	Overall width	mm	3000	
	Overall height	mm	4000	
	Axle distance	1st, 2nd	mm	1980
		2nd, 3rd	mm	3120
		3rd, 4th	mm	1450
		4th, 5th	mm	1500
Wheel distance	1st, 2nd	mm	2478	
	3rd, 4th	mm	2590	
Weight parameter	Overall weight(travel condition)	kg	54950	
	Axle load	1st	kg	9500
		2nd	kg	9500
		3rd	kg	12975
		4th	kg	12975
5th		kg	10000	
Power parameter	Engine mode	OM502LA Euro.IV Benz OM502LA Euro. III Benz		
	Rated power	OM502LA Euro.IV Benz	Kw/rpm	375Kw/2000rpm
		OM502LA Euro. III Benz	Kw/rpm	350kW/1800rpm
	Rated torque	OM502LA Euro.IV Benz	N.m/rpm	2400 N.m/(1300-1400) rpm
OM502LA Euro. III Benz		N.m/rpm	2300N · m/1100rpm	
Travel parameter	Max. traveling speed	Km/h	85	
	Min. stable speed	Km/h	1.845	
	turning radius	Min. turning radius	m	11
		Min. turning radius of jib nose	m	13.5
	Min. ground clearance	mm	320	
	Approach angle	°	≥ 21	
	Departure angle	°	≥ 18	
	(30km/h) braking distance	m	≤ 10	
	Max. gradeability	%	45	
Oil consumption for every 100km	l	≤ 85		
Main performance parameter	Max. lifting weight	t	100	
	Min. working radius	m	3	
	Turntable tail slewing diameter	m	4.695	
	Max.lifting moment	Base boom	kN.m	4320
		Full-extended main boom	kN.m	1800
	Outrigger span (lateral x vertical)		m	7.6 × 7.6
		Lifting height		
	Length of lifting boom	Base boom	m	13.9
		Full-extended main boom	m	60
		Main boom& jib	m	78.1
Jib offset	Base boom	m	13.25	
	Full-extended main boom	m	60	
Main boom& jib		m	78.1	
		°	0、15、30	
Working speed parameter	Max. single line speed of main winch(no load)	m/min	135	
	Max. single line speed of auxiliary winch(no load)	m/min	135	
	Time for boom full extension and retraction	s	420/400	
	Time for boom lifting and dropping	s	60/80	
	Max. slewing speed	r/min	0~2.5	
	Time for lateral outriggers full extension and retraction	s	45/35	
	Time for vertical outriggers full extension and retraction	s	45/35	

Drive/Steering
10×6×6

Specifications/Chassis

1 Frame
 Flat frame, welded structure, high rigidity steel.

2 Outrigger
 Swing outrigger for front outrigger, H-mode of rear outrigger, fully hydraulic control, independent movement of each outrigger.

3 Engine
 Chassis: Benz OM502LA III /1 Euro III engine, rated power: 350Kw/1800rpm, max. torque 2300N.m/1080rpm, or Benz OM502LA E3B/1 Euro IV engine, rated power 375Kw/1800rpm, max torque 2400N.m/ (1300–1400) rpm
 Superstructure: USA Cummins QSB6.7 engine, rated power 144Kw/2200rpm, max. torque 931 N.m/1400rpm, or Benz OM906LA E2/5 engine, rated power: 150Kw/2200r/min 750 N.m/ (1200–1600)r/min.

4 Transmission system
 Germany ZF 12 shift integrated hand and automated gearbox, end gear structure of universal joint.

5 Wheel and tyre
 14 wheels, 1 spare tyre, 12.00R24–20PR.

6 Steering system
 Single circuit hydraulic power steering system with mechanical steering limiter.

7 Electric system
 24V, Can Bus.

8 Driver's cab
 Wide space, ergonomic design, adjustable steering wheel.

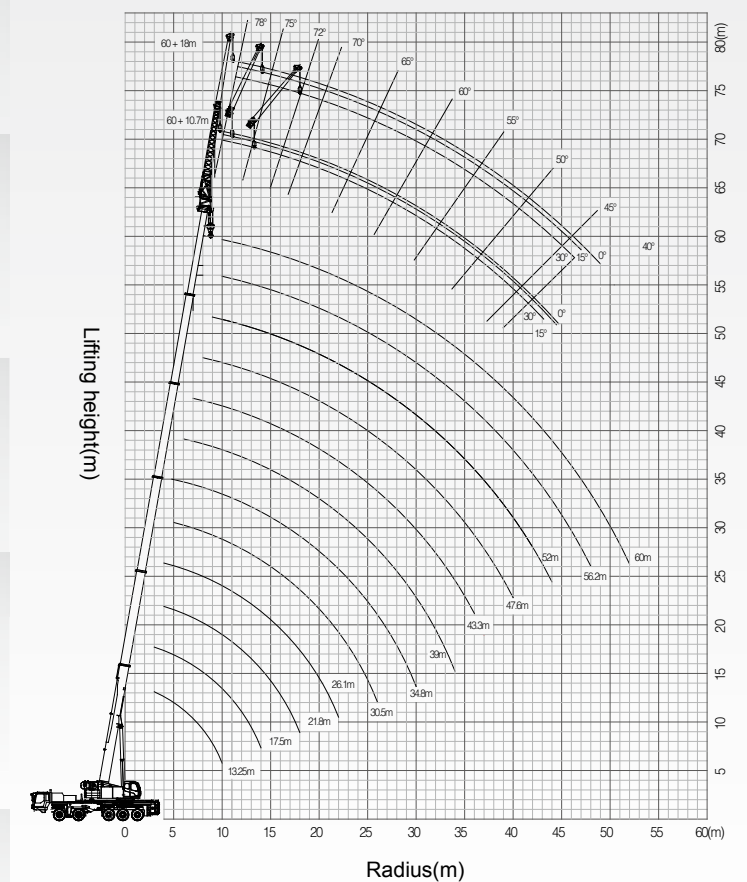
9 Axle
 Steering: axle 1,2,5; driven: axle 3, 4 ,5, Dajiang driven axle as standard configuration, Kessler driven axle for option

10 Suspension system
 Steel spring balance suspension system for axle 1 and 2
 Steel spring balance suspension system for axle 3,4,5

11 Braking system
 Adopted air brake, dual circuit traveling brake controlled by foot pedal, ; parking brake and emergency brake controlled by handle; equipped engine brake, engine exhaust brake.

12 Hydraulic system
 Constant displacement gear pump controlling extension and retraction of horizontal and vertical outriggers.

Truck crane lifting height



Specification/Superstructure

1 Operator's cab

Fabricated from corrosion-resistant steel, equipped full-covered flexible decorations, adjustable seat provide comfortable, broad vision, tiltable 20 degree, air-conditioner.

2 Main boom

6 sections, U-mode boom, single cylinder cross pin technology.

3 Counterweight

32.5t, suspended on the turntable through frame, do travelling through extension and retraction of cylinder to improve work performance.

4 Hydraulic system

Load sensor and constant power to control axial piston variable pump to realize regulation of speed-proportion and power adjusting, automatically regulate oil pump through the condition of load, speed regulating do not depends on flow, energy-saving.

5 Main winch

Variable displacement piston motor, hydraulic braking system, equipped balance valve, max. speed(single rope) 130m/min, rope length 280m.

6 Aux. winch

Variable displacement piston motor, hydraulic braking system, equipped balance valve, max. speed(single rope) 135/min, rope length 190.

7 Elevation

Deadweight drop luffing.

8 Slew unit

Closed slew pump, constant displacement piston motor, reducer, max. slewing speed 2.5r/min.

9 Safety devices

Colorful LCD, integrated load moment indicator, hood load, rated load, boom length, angle, lifting, height, Load charts and working parameter set-up, equipped with safety-limit function.

Load chart

work ranges (m)	32.5t counterweight, fully extended outriggers									
	13.25	17.5	17.5	17.5	26.8	26.8	26.8	26.1	26.1	26.1
3	100	91	86	62						
3.5	100	87	86	62						
4	97	85	82	62	80.5	78.4	57.5	65	58	55.7
4.5	89	81	74	60	74.7	74.4	54.7	64	56	52.2
5	83	72.5	71	59	69	68	51.8	63	53.6	48.7
5.5	77.5	69.75	68	58	65.5	64.5	49.2	61.5	50.75	46.1
6	72	67	65	57	62	61	46.6	60	47.9	43.5
6.5	65.5	63.5	62	56.5	58.5	58	44.4	58.7	45.75	41.4
7	59	60	59	56	55	55	42.2	57.4	43.6	39.3
8	53	51	50	50	50.6	50	39.1	51.7	40.2	35.7
9	45	44	43	42	46	45.6	36.1	47	37.3	32.8
10	39	38.5	38	37	38.2	37.6	33.5	43.5	34.2	30.3
11		35.85	35	34	35.1	34.3	31.25	39	31.75	28.25
12		33.2	32	31	32	31	29	34.5	29.3	26.2
14		25.2	26.8	27.3	24	24	26.471	26.7	25.6	23.2
16					20	20.9	23.793	21	21.6	20.5
18					16.5	16.8	19.57	16.9	17.5	18.8
20								13.8	14.4	16.1
22								11.4	12	13.7
24										
26										
28										
30										
Number of lines	12	11			9			8		
Extension of boom										
2	0	46	0	0	46	0	0	46	92	0
3	0	0	0	0	46	46	0	46	46	0
4	0	0	46	0	0	46	0	46	0	46
5	0	0	0	46	0	0	46	0	0	46
6	0	0	0	0	0	0	46	0	0	46

work ranges(m)	30.5	30.5	30.5	34.8	34.8	34.8	39	39	39
5	52	50.2	48.5	43.3	41.3	38.8			
5.5	50.8	47.1	46.4	41.1	39.4	37.15			
6	49.5	44	44.2	38.9	37.5	35.5	33.2	32.8	31.1
6.5	48.3	41.7	42.1	36.75	35.65	33.85	31.75	31.35	30
7	47.1	39.4	40	34.6	33.8	32.2	30.3	29.9	28.9
8	42.6	35.3	36.2	31.1	30.9	28.9	27.5	27	26.7
9	38.9	32	33.2	28.2	28.1	26.5	25	24.5	24.5
10	35.4	29.5	30.6	25.4	25.9	24.3	23.2	22.6	22.6
11	32.95	27.35	28.65	23.65	24.15	22.75	21.4	21	21.15
12	30.5	25.2	26.7	21.9	22.4	21.2	19.6	19.4	19.7
14	26.6	21.6	23.5	18.8	19.6	18.4	17.1	16.8	17.2
16	21.8	19.1	20.9	16.4	17.4	16.3	14.8	14.8	15.4
18	17.6	16.8	18.9	14.4	15.6	14.6	13.2	13.1	13.8
20	14.5	13.8	16	12.6	13.5	13	11.8	11.8	12.4
22	12.463	11.742	13.6	11.3	11.3	11.8	10.5	10.6	11.3
24	10.506	9.785	11.7	9.7	9.6	10.7	9.5	9.5	10.3
26	9.27	8.137	10.1	8.343	8.2	10	8.6	8.7	9.5
28				7.004	7.1	8.755	7.5	7.9	8.6
30				5.871	6.1	7.519	6.592	6.8	7.725
32							5.665	5.8	6.695
34							4.738	5	5.871
36									
38									
40									
Number of lines	6			5			4		
Extension of boom									
2	46	92	0	92	46	0	92	46	46
3	46	46	46	46	46	92	46	92	46
4	46	46	46	46	46	46	46	46	46
5	46	0	46	46	46	46	46	46	46
6	0	0	46	0	46	46	46	46	92

work ranges(m)	43.3	43.3	43.3	47.6	47.6	47.6	52	52	56.2	60
7	25	23.5	22.2							
8	24	22.6	21	21.5	20.5	18.3				
9	23.4	21.8	20.8	20.5	19.6	17.4	17.7	15.4		
10	22.5	20.6	19.5	19	18.7	16.5	17	14.8	13.1	11.4
11	21.3	20.05	18.45	18.5		15.6	16.35	14.15	12.75	11.1
12	20.1	19.5	17.4	18	16.9	14.7	15.7	13.5	12.4	10.8
14	17.6	17.8	15.5	17	15.4	13.1	14.3	12.3	11.6	10.2
16	15.8	15.9	14	15.8	13.8	11.8	13.2	11.3	10.9	9.6
18	14.6	14.1	12.6	14.6	12.5	10.7	12	10.4	10.1	9
20	13.8	12.9	11.4	13.2	11.4	9.7	11.2	9.6	9.5	8.3
22	12.4	11.8	10.4	12.2	10.3	8.9	10.2	8.8	8.8	7.8
24	10.6	10.8	9.5	11.1	9.5	8.2	9.4	8.2	8.1	7.3
26	9.1	9.7	8.8	9.6	8.7	7.5	8.6	7.6	7.7	6.8
28	7.9	8.6	8.1	8.3	7.9	6.9	8	7.1	7.1	6.4
30	6.8	7.5	7.5	7.2	7.3	6.5	7.5	6.5	6.7	6
32	6	6.5	7.1	6.3	6.8	5.9	6.6	6	6.2	5.6
34	5.1	5.7	6.4	5.5	6	5.6	5.8	5.6	5.8	5.2
36	4.5	5	5.7	4.8	5.3	5.3	5.1	5.2	5.4	4.8
38				4.1	4.7	4.9	4.4	4.8	4.8	4.5
40				3.6	4.1	4.6	3.9	4.5	4.2	4.2
42							3.4	4	3.7	3.8
44							2.9	3.605	3.3	3.3
46									2.9	2.9
48									2.5	2.6
50										2.2
52										1.9
Number of lines	3			3			2			
Extension of boom										
2	92	46	46	92	46	46	92	46	92	100
3	92	92	46	92	92	46	92	92	92	100
4	46	92	46	92	92	92	92	92	92	100
5	46	46	92	46	92	92	92	92	92	100
6	46	46	92	46	46	92	46	92	92	100



三一汽车起重机械有限公司
SANY Mobile Cranes CO.,LTD.

Address: Jinzhou development, Changsha, Hunan, China

Tel: (86)731-87873131

Fax: (86)731-84031999-196

Service hotline: 4008878318

Consulting line: 4008879318

E-mail: qzjyx@sany.com.cn

Post code: 410600

Web: www.sanygroup.com

Sany reserves the right to amend these specifications at any time without notice.

Further technology details according to actual product!