

Reliability in Action

# Wheeled Loader LG956L



Courtesy of Machine.Market



# Wheeled Loader LG956L



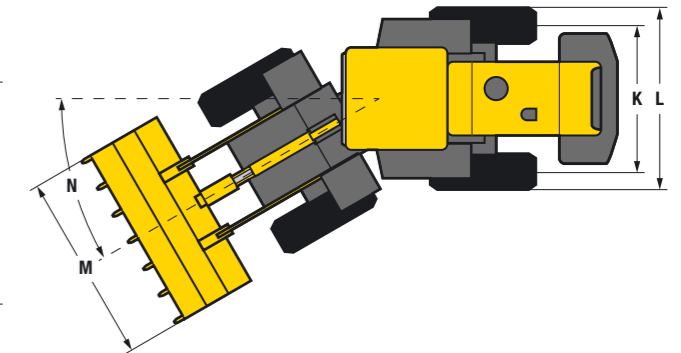
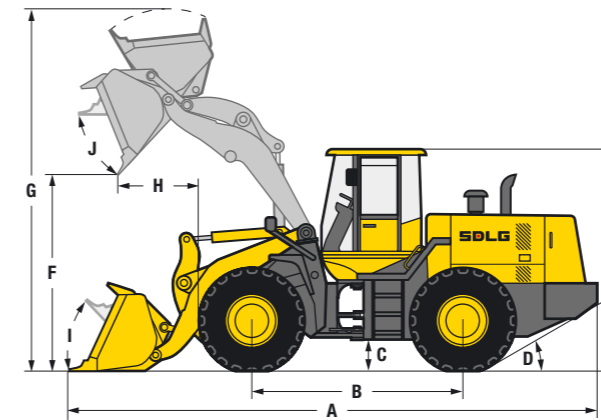
## LG956L

Reliability, high performing equipment and leading fuel efficiency all combine to make the 17.2 tonne LG956L an excellent choice for productivity and uptime in all environments. The LG956L offers superb traction, excellent breakout force and a rigid structure. All SDLG wheeled loader models are rigorously tested to ensure reliability in action.

- The box structure frame of the LG956L gives best-in-class robustness.
- The access panels on the rear of the machine swing outwards to make daily checks and maintenance much easier.
- Single joystick operation of loader arm and bucket for easy and comfortable operation.

There is a wide range of attachments available for the LG956L including:

- Different size standard buckets
- Side tip bucket
- Multi-function bucket (4-in-1)
- Pallet forks
- Log grapples
- Snow blade



Description	Specification
Operating weight	17 250 kg
Standard bucket capacity	2.7 m <sup>3</sup>
Lift capacity (rated load)	5 000 kg
Static tipping load at full turn	11 213 kg
Maximum breakout force	180 kN

Dimensions	
A. Overall length	8 040 mm
B. Wheel base	3 200 mm
C. Ground clearance	457 mm
D. Approach angle back	30°
E. Overall height	3 382 mm
F. Dump height	3 180 mm
G. Overall operating height	5 457 mm
H. Dump reach	1 090 mm
I. Roll back angle ground level	45°
J. Roll back level full height	63°
K. Track width	2 190 mm
L. Machine width	2 785 mm
M. Bucket width	3 024 mm
N. Steering angle	38°

Engine	
Model	Dalian Deutz BF6M2012
Type	Watercooled, 4 stroke, 6 cylinders in line, direct injection, turbo charged
Rated power (SAE J1349)	165 kW @ 2 000 rpm
Maximum torque	925 Nm
Cylinder bore stroke	108 / 130 mm

Description	Specification
<b>Transmission</b>	
Type	Countershaft-type, electro-hydraulic shift
Number of gears	2 forward, 1 reverse
Maximum travel speed	Forward 40.5 km/h Reverse 16.1 km/h
Drive type	4 wheel drive
Tyre dimension	23.5 - 25
Tyre pressure	Front 48 - 51 psi Rear 40 - 43 psi
Service brake type	Dry disc brake
Parking brake	Air operated internal expansion

Service fill capacities	
Fuel	300 L
Hydraulic oil	210 L
Axles (main and final drives)	54 L
Engine	20 L
Transmission	45 L
Brake system	4 L
<b>Hydraulics</b>	
Type	Single lever hydraulic pilot control
Boom lift time	6.4 sec
Total cycle time	11.3 sec



**SDLG machines** are built to be like the people that own them: hardworking, genuine and reliable. Cost effective, robust machines with fuel efficient engines that are easy to operate and easy to maintain.

Everything about SDLG is designed to give you the confidence that you can complete the job to a high standard and on schedule. And when you need parts or service, you can trust your SDLG dealer to deliver on our promise.

When you buy SDLG, you're buying reliability: **Reliability in Action.**



[www.sdlg.com](http://www.sdlg.com)