

Rated Load Capacities (continued)

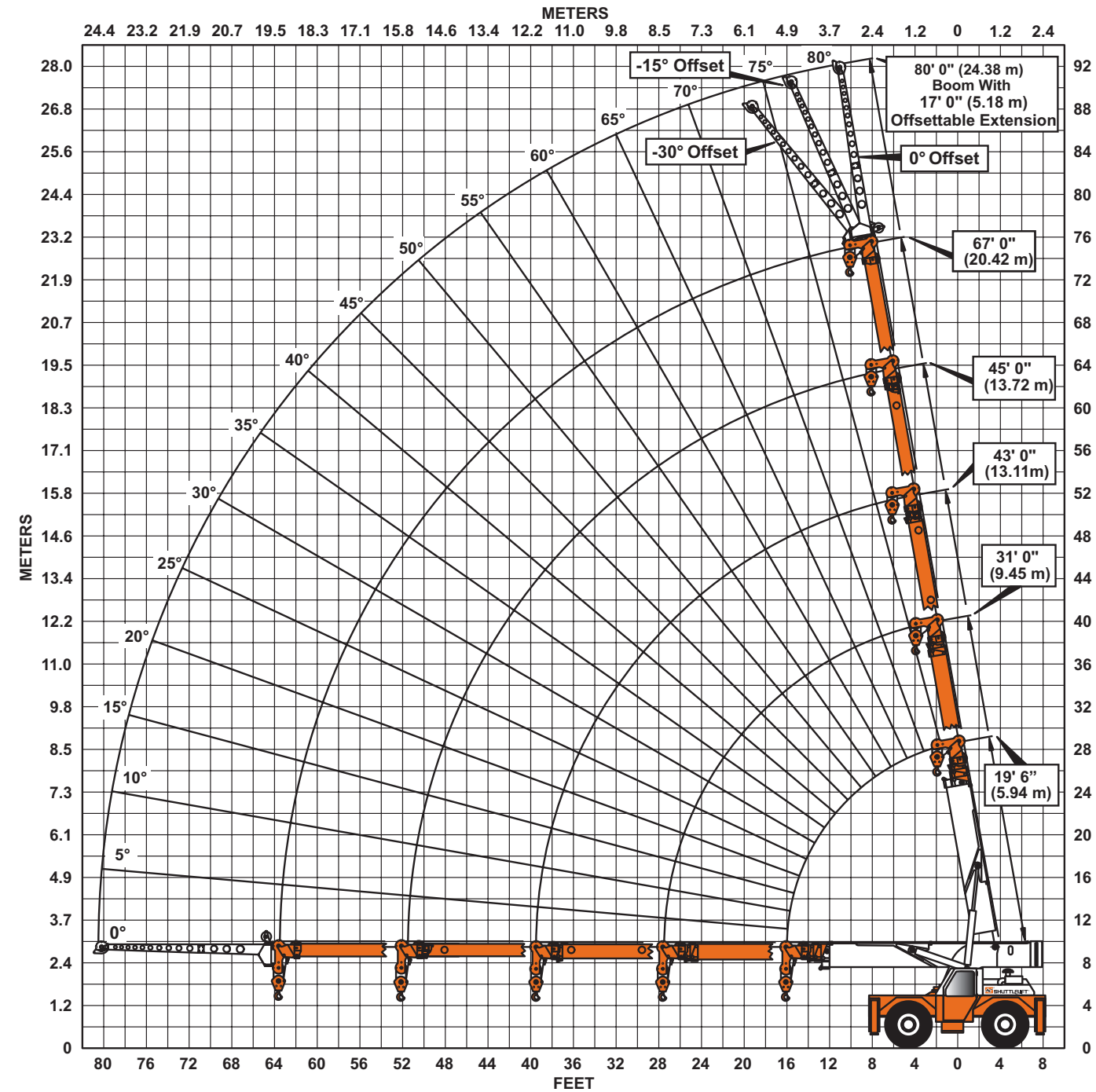
MAIN BOOM ON RUBBER								
Any Boom Length			Any Boom Length			Any Boom Length		
Radius ft (m)	Front Rating lbs (kg)	360° Rating lbs (kg)	Radius ft (m)	Front Rating lbs (kg)	360° Rating lbs (kg)	Radius ft (m)	Front Rating lbs (kg)	360° Rating lbs (kg)
6	30000	21000	26	4900	2350	46	1650	450
(1.80)	(13610)	(9530)	(7.92)	(2220)	(1040)	(14.02)	(750)	(200)
8	28000	17900	28	4200	2100	48	1400	350
(2.44)	(12700)	(8120)	(8.53)	(1910)	(950)	(14.63)	(640)	(160)
10	25000	15000	30	3700	1800	50	1300	250
(3.05)	(11340)	(6800)	(9.14)	(1680)	(820)	(15.24)	(590)	(110)
12	19600	12400	32	3300	1550	52	1150	200
(3.66)	(8890)	(5620)	(9.75)	(1500)	(700)	(15.85)	(520)	(90)
14	15500	9500	34	3000	1300	54	1050	150
(4.27)	(7030)	(4310)	(10.36)	(1360)	(590)	(16.46)	(480)	(70)
16	12400	7400	36	2700	1100	56	950	75
(4.88)	(5620)	(3360)	(10.97)	(1220)	(500)	(17.07)	(430)	(30)
18	9900	6000	38	2500	950	58	875	25
(5.49)	(4490)	(2720)	(11.58)	(1130)	(430)	(17.68)	(495)	(10)
20	8100	4600	40	2200	800	60	800	-
(6.10)	(3670)	(2090)	(12.19)	(1000)	(360)	(18.29)	(360)	-
22	6800	3700	42	2000	675	62	700	-
(6.71)	(3080)	(1680)	(12.80)	(910)	(310)	(18.90)	(320)	-
24	5700	3000	44	1800	550	63.5	600	-
(7.32)	(2590)	(1360)	(13.41)	(820)	(250)	(19.36)	(270)	-

17 FT JIB CAPACITIES ON EXTENDED OUTRIGGERS					
Main Boom Angle (deg)	Jib Offset Angle				
	0 deg		15 deg		30 deg
	To 55.0 ft (16.76 m) Main Boom	To 67.0 ft (20.42 m) Main Boom	To 55.0 ft (16.76 m) Main Boom	To 67.0 ft (20.42 m) Main Boom	Any Boom Length
80	-	-	5000 (2270)	5000 (2270)	3500 (1590)
75	7500 (3400)	-	4400 (2000)	4400 (2000)	3100 (1410)
70	6100 (2770)	-	3900 (1770)	3900 (1770)	2800 (1270)
65	5000 (2270)	4600 (2090)	3500 (1590)	3500 (1590)	2550 (1160)
60	4300 (1950)	3800 (1720)	3150 (1430)	3150 (1430)	2350 (1065)
55	3800 (1720)	3300 (1500)	2850 (1290)	2850 (1290)	2200 (1000)
50	3400 (1540)	2900 (1320)	2600 (1180)	2600 (1180)	2100 (950)
45	3050 (1380)	2600 (1180)	2400 (1090)	2400 (1090)	2000 (910)
40	2800 (1270)	2400 (1090)	2250 (1020)	2250 (1020)	1950 (880)
35	2600 (1180)	2150 (980)	2150 (975)	2050 (930)	1900 (860)
30	2400 (1090)	1930 (880)	2080 (940)	1850 (840)	1830 (830)
25	2300 (1040)	1750 (790)	2050 (930)	1720 (780)	-
20	2200 (1000)	1600 (730)	2000 (910)	1590 (720)	-
15	2100 (950)	1500 (680)	1950 (880)	1520 (690)	-
10	2050 (930)	1460 (660)	-	-	-
5	2020 (920)	1450 (655)	-	-	-
0	2000 (910)	1440 (650)	-	-	-

RATING REDUCTIONS FOR INSTALLED LOAD HANDLING DEVICES		
DEVICE	FROM MAIN BOOM	FROM BOOM EXTENSION
MAIN BLOCK	400 LB (181 kg)	NOT APPLICABLE
HOOK & BALL	100 LB (45.4 kg)	100 (45.4 kg)
EXTENSION - STOWED	NO DEDUCTION	NOT APPLICABLE
EXTENSION - DEPLOYED	500 LB (227 kg)	NO REDUCTION

HOIST ROPE: 5/8" diameter (16 mm) 6 x 19 EIPS IWRC BRIGHT
 Minimum required breaking strength = 38,500 lb (17 460 kg)
 Maximum permissible single line pull = 11,000 lb (4990 kg)

Range Chart



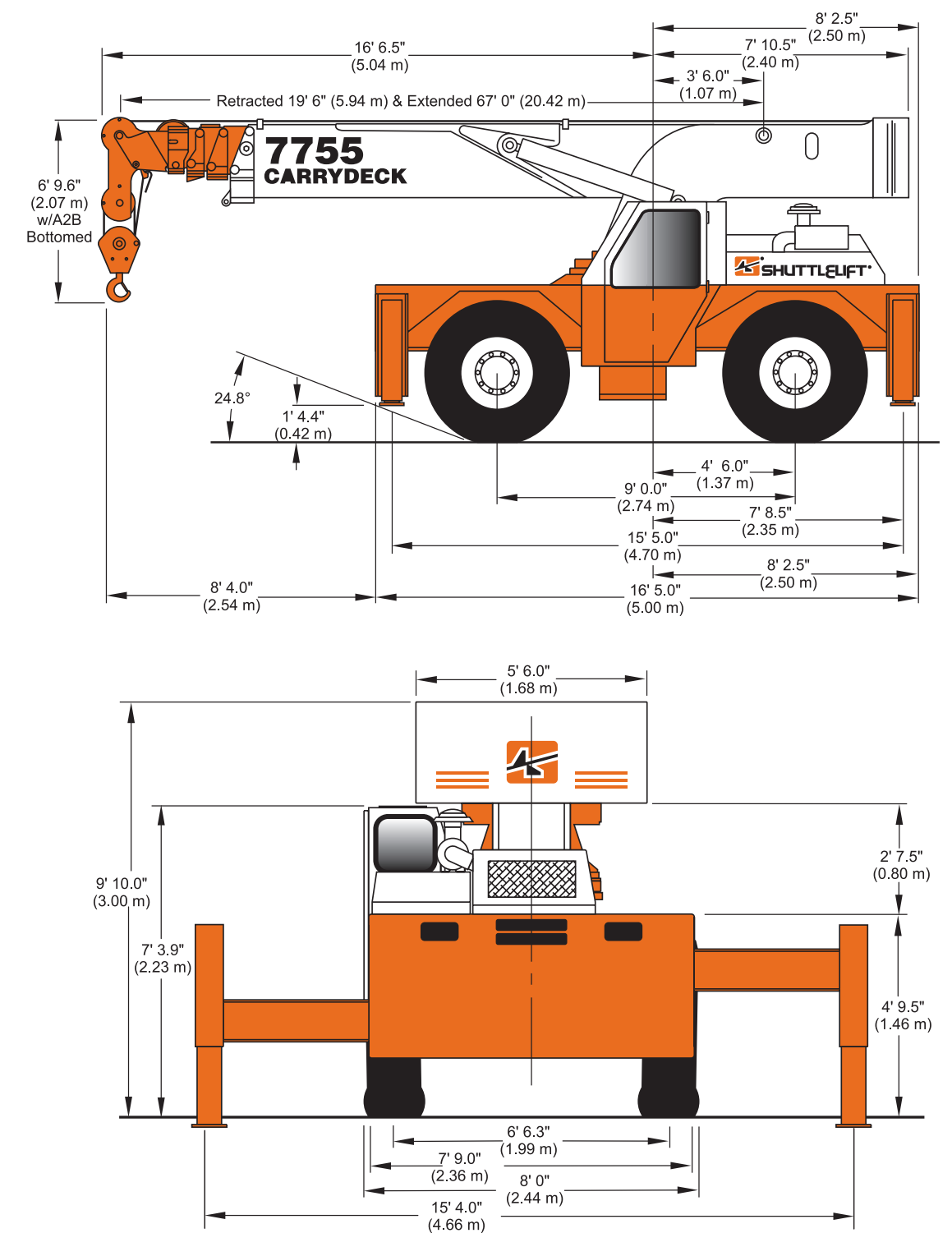
7755 5-SECTION 80' (24.38 M) BOOM PLUS 17' (5.18 M) OFFSETTABLE EXTENSION



MODEL

Carrydeck®
Industrial Cranes

7755
22 TON (19 960 KG)



Manitowoc
Crane Group
Manitowoc Crane Group - Americas
Shady Grove, Pennsylvania Facility
Tel: [Int + 001] 717 597 8121
Fax: [Int + 001] 717 597 4062
www.manitowoccrane.com

Constant improvement and engineering progress make it necessary that we reserve the right to make specification, equipment, and price changes without notice. Illustrations shown may include optional equipment and accessories, and may not include all standard equipment.

Specifications

STANDARD EQUIPMENT

- 19' 6" – 67' 0" (5.94 m – 20.42 m) five-section full power boom
- Quick reeve dropblock with swing/swivel hook
- Hydraulic oscillating rear axle lockouts
- 4-wheel drive and 4-wheel steer
- 60 ft2 (5.57 m2) carrydeck
- All steel cab structure less glass (top safety plate standard)
- Lights – head, tail, rear, work, stop and turn signals
- Outriggers – two stage hydraulic telescoping box front and rear
- Power steering – hydraulic load sense
- 375' x 5/8" 6 x 19 EIPS wire rope
- Anti-two block cut-out for telescope, boom, and hoist
- Pivoting boom head (-15°, -30°, 0°, +30°, +60°, +80°)
- 14.00 - 24 tires
- Independent outrigger control
- Cummins QSB 5.9L turbo-charged diesel engine
- Non-skid deck surface
- Back-up alarm
- Boom angle indicators
- Pilot-operated controls
- Dual rearview mirrors
- Load Indicator (LI)
- Fire extinguisher

OPTIONAL EQUIPMENT

- Enclosed cab with windshield wiper and sliding right window
- Adjustable operator cushion seat with seat belt
- 17.5 - 25 tires
- CE compliance
- 19' 6" – 43' 0" (5.94 m – 13.11 m) three-section full power boom
- 14.00 - 24 radial tires
- 17.5 - 25 radial tires

ACCESSORIES & ATTACHMENTS

- Cold start kit
- Flashing strobe light
- Rear hitch
- Front hitch
- 17' (5.18 m) offsettable/swingaway boom extension
- Heater and defroster
- Spare wheel and tire
- Engine shut-down gauges
- 5.5 ton overhaul ball
- Load Moment Indicator (LMI)
- Rated Capacity Limiter (RCL)
- 8000 lb. (3629 kg) recessed auxiliary hydraulic winch
- Head and tail light grilles
- Foam-filled tires
- Catalytic converter for diesel
- Air conditioned cab

CAPACITIES

Fuel tank.....	50 gal (189 L)
Hydraulic reservoir.....	60 gal (227 L)
Cooling System.....	23 qts (21.9 L)
Transmission.....	6 gal (22.7 L)

GENERAL

Unit weight (approximately).....	43,000 lb (19 505 kg)
Maximum boom angle.....	80°
Outrigger pad size.....	11.5" X 11.5" (29.21 cm x 29.1 cm)
Swing system.....	360° continuous
Swing speed.....	3.0 rpm

HYDRAULIC SYSTEM

Main pump.....	Variable displacement piston with fixed displacement gear
Maximum system pressure.....	3500 psi
Maximum flow.....	74 gpm (280 Lpm) @ 2500 rpm
ENGINE	
Make and model.....	Cummins U.S. EPA tier 3 & EU stage III certified QSB 4.5L turbo-charged after-cooled diesel engine
Number of cylinders.....	4
Horsepower.....	130 (97 kW) @ 2500 rpm
Torque.....	457 lb-ft (620 Nm) @ 1500 rpm

TRANSMISSION

Type.....	4-speed powershift
Parking brake.....	SAHR caliper disc

AXLES

Drive / steer front and rear:	Type..... planetary
Sevice brakes.....	integrated wet disc
Oscillating rear axle.....	3.5°

ELECTRICAL

Starting.....	12 VDC
Battery (1).....	820 CCA @ 0° F (-18° C)
Alternator.....	63 amp

DECK CARRYING CAPACITIES

Deck only.....	30,000 lb (13 608 kg)
Combined boom & deck.....	20,000 lbs (9072 kg)

TRAVEL SPEEDS

1st gear.....	2.9 mph (4.66 k/h)
2nd gear.....	6.5 mph (10.45 k/h)
3rd gear.....	14.3 mph (22.99 k/h)
4th gear.....	19.5 mph (31.35 k/h)

TURNING SPECIFICATIONS

Turning radius: to c/l of outside tires	
2-wheel steer.....	24' 0" (7.3 m)
4-wheel steer.....	13' 3" (4.0 m)

TRACTIVE EFFORT

Unit equipped with 14.00 - 24 tires & no load	
1st gear.....	28,400 lb (12 882 kg)
2nd gear.....	13,500 lb (6124 kg)
3rd gear.....	6,150 lb (2790 kg)
4th gear.....	4,300 lb (1950 kg)

GRADEABILITY (calculated) (PAVED SURFACE)

1st gear, no load.....	63%
30,000 lb (13 608 kg) load.....	38%

CYLINDERS

CYCLE TIME

	1000 rpm	2500 rpm
Boom Cylinder (full stroke):		
Up	49 sec	49 sec
Down	32 sec	32 sec
Telescope Cylinder (full stroke):		
Out	120 sec	59 sec
In	70 sec	58 sec
Outriggers (simultaneous operation):		
Out	12 sec	4 sec
Down	28 sec	11 sec
Up	20 sec	8 sec
In	6 sec	5 sec

HOIST (WINCH)

2-speed:	
Line pull.....	11,000 lb (4990 kg)
Rope size.....	5/8" x 375' (16 mm x 114 m)
Line speed (2nd layer)	
1,000 rpm.....	59/117 fpm (17.98/35.66 mpm)
2,500 rpm.....	189/355 fpm (57.60/108.20 mpm)

Note: All specifications are stated in accordance with PCSA and ANSI B30.5 definitions, SAE standards or recommended practices, where applicable.

Rated Load Capacities

5-SECTION BOOM

NOTE: For rated reductions for installed load handling equipment, see back page.

NOTE: These charts are only a guide and should not be used to operate the crane. The individual crane load charts, operating instructions and other instructional information must be read and understood prior to operating the crane.

SHADED AREAS ARE GOVERNED BY STRUCTURAL STRENGTH. DO NOT RELY ON TIPPING.

MAIN BOOM LOAD RATINGS ON OUTRIGGERS Extended and Down 360° or Retracted and Down Front/Rear																		
Radius ft (m)	19.5 ft (5.49 m) Boom		20.5 - 30 ft (6.24-9.14 m) Boom		31 ft (9.45 m) Boom		32 - 42 ft (9.75 -12.80 m) Boom		43 ft (13.11 m) Boom		44 - 54 ft (13.41 -16.46 m) Boom		55 ft (16.76 m) Boom		56 - 66 ft (17.07 -20.12 m) Boom		67 ft (20.42 m) Boom	
	Boom Angle (deg)	Rated Load lbs (kg)	Rated Load lbs (kg)	Boom Angle (deg)	Rated Load lbs (kg)	Rated Load lbs (kg)	Boom Angle (deg)	Rated Load lbs (kg)	Rated Load lbs (kg)	Boom Angle (deg)	Rated Load lbs (kg)	Rated Load lbs (kg)	Boom Angle (deg)	Rated Load lbs (kg)	Rated Load lbs (kg)	Boom Angle (deg)	Rated Load lbs (kg)	Rated Load lbs (kg)
8.5 (2.59)	58	44000 (19 958)	26500 (12 020)	71	26500 (12 020)	25400 (11 520)	76	25400 (11 520)	19500 (8850)	79	19500 (8850)	-	-	-	-	-	-	-
10 (3.05)	52	40000 (18 140)	26500 (12 020)	68	26500 (12 020)	25400 (11 520)	74	25400 (11 520)	19500 (8850)	78	19500 (8850)	-	-	-	-	-	-	-
12 (3.66)	44	33800 (15 330)	25300 (10 570)	64	25300 (10 570)	24200 (10 980)	72	24200 (10 980)	17600 (7980)	76	17600 (7980)	14500 (6580)	78	14500 (6580)	-	-	-	-
14 (4.27)	33	28500 (12 930)	22900 (10 390)	59	22900 (10 390)	22600 (10 250)	69	22600 (10 250)	16100 (7300)	74	16100 (7300)	13200 (5990)	77	13200 (5990)	-	-	-	-
16 (4.88)	0	23700 (10 750)	20900 (9480)	55	20900 (9480)	20000 (9070)	66	20000 (9070)	14800 (6710)	71	14800 (6710)	12200 (5530)	75	12200 (5530)	-	-	-	-
18 (5.49)	-	-	19300 (8750)	50	19300 (8750)	17900 (8120)	63	17900 (8120)	13700 (6210)	69	13700 (6210)	11200 (5080)	73	11200 (5080)	-	-	-	-
20 (6.10)	-	-	17800 (8070)	45	17800 (8070)	16100 (7300)	60	16100 (7300)	12800 (5800)	67	12800 (5800)	10400 (4720)	71	10400 (4720)	-	-	-	-
22 (6.71)	-	-	16400 (7440)	39	16400 (7440)	14600 (6620)	56	14600 (6620)	12000 (5440)	64	12000 (5440)	9700 (4400)	69	9700 (4400)	-	-	-	-
24 (7.32)	-	-	14700 (6670)	31	14700 (6670)	13300 (6030)	53	13300 (6030)	11200 (5080)	62	11200 (5080)	9100 (4130)	67	9100 (4130)	-	-	-	-
26 (7.92)	-	-	13200 (5990)	22	13200 (5990)	12300 (5580)	49	12300 (5580)	10600 (4810)	60	10600 (4810)	8600 (3900)	66	8600 (3900)	-	-	-	-
27.5 (8.38)	-	-	11600 (5260)	0	11600 (5260)	11600 (5260)	47	11600 (5260)	10200 (4630)	58	10200 (4630)	8200 (3720)	64	8200 (3720)	-	-	-	-
30 (9.14)	-	-	-	-	-	9900 (4490)	42	10500 (4760)	9400 (4260)	55	9400 (4260)	7700 (3490)	62	7700 (3490)	-	-	-	-
32 (9.75)	-	-	-	-	-	8800 (3990)	37	9800 (4450)	8700 (3950)	52	8700 (3950)	7300 (3310)	60	7300 (3310)	-	-	-	-
34 (10.36)	-	-	-	-	-	7800 (3540)	32	8700 (3950)	8100 (3670)	49	8100 (3670)	6900 (3130)	58	6900 (3130)	-	-	-	-
36 (10.97)	-	-	-	-	-	7100 (3220)	26	7800 (3540)	7600 (3450)	46	7600 (3450)	6600 (2990)	56	6600 (2990)	-	-	-	-
38 (11.58)	-	-	-	-	-	6500 (2950)	18	7000 (3180)	7000 (3180)	43	7100 (3220)	6300 (2860)	53	6300 (2860)	-	-	-	-
39.5 (12.04)	-	-	-	-	-	6400 (2900)	0	6400 (2900)	6400 (2900)	41	6800 (3080)	6100 (2770)	52	6100 (2770)	-	-	-	-
42 (12.80)	-	-	-	-	-	-	-	-	5700 (2590)	36	6300 (2660)	5800 (2630)	49	5800 (2630)	-	-	-	-
44 (13.41)	-	-	-	-	-	-	-	-	5300 (2400)	32	5800 (2630)	5600 (2540)	47	5600 (2540)	-	-	-	-
46 (14.02)	-	-	-	-	-	-	-	-	4900 (2220)	28	5300 (2400)	5300 (2400)	44	5300 (2400)	-	-	-	-
48 (14.63)	-	-	-	-	-	-	-	-	4600 (2090)	23	4800 (2180)	4800 (2180)	42	5000 (2270)	-	-	-	-
50 (15.24)	-	-	-	-	-	-	-	-	4400 (2000)	16	4400 (2000)	4400 (2000)	39	4700 (2130)	-	-	-	-
51.5 (15.70)	-	-	-	-	-	-	-	-	4000 (1810)	0	4000 (1810)	4000 (1810)	37	4600 (2090)	-	-	-	-
54 (16.46)	-	-	-	-	-	-	-	-	-	-	3800 (1720)	33	4200 (1910)	-	-	-	-	-
56 (17.07)	-	-	-	-	-	-	-	-	-	-	3600 (1630)	29	3900 (1770)	-	-	-	-	-
58 (17.68)	-	-	-	-	-	-	-	-	-	-	3400 (1540)	25	3600 (1630)	-	-	-	-	-
60 (18.29)	-	-	-	-	-	-	-	-	-	-	3200 (1450)	20	3300 (1510)	-	-	-	-	-
63.5 (19.35)	-	-	-	-	-	-	-	-	-	-	2800 (1270)	0	2800 (1270)	-	-	-	-	-

Rated Load Capacities (continued)

MAIN BOOM LOAD RATINGS ON OUTRIGGERS Retracted and Down 360°																		
Radius ft (m)	19.5 ft (5.49 m) Boom		20.5 - 30 ft (6.24-9.14 m) Boom		31 ft (9.45 m) Boom		32 - 42 ft (9.75 -12.80 m) Boom		43 ft (13.11 m) Boom		44 - 54 ft (13.41 -16.46 m) Boom		55 ft (16.76 m) Boom		56 - 66 ft (17.07 -20.12 m) Boom		67 ft (20.42 m) Boom	
	Boom Angle (deg)	Rated Load lbs (kg)	Rated Load lbs (kg)	Boom Angle (deg)	Rated Load lbs (kg)	Rated Load lbs (kg)	Boom Angle (deg)	Rated Load lbs (kg)	Rated Load lbs (kg)	Boom Angle (deg)	Rated Load lbs (kg)	Rated Load lbs (kg)	Boom Angle (deg)	Rated Load lbs (kg)	Rated Load lbs (kg)	Boom Angle (deg)	Rated Load lbs (kg)	Rated Load lbs (kg)
8.5 (2.59)	58	31000 (14 060)	26500 (12 020)	71	26500 (12 020)	25400 (11 520)	76	25400 (11 520)	19500 (8850)	79	18500 (8850)	19500 (8850)	78	18500 (8850)	-	-	-	-
10 (3.05)	52	24000 (10 890)	22300 (10 120)	68	22300 (10 120)	22000 (9980)	74	22000 (9980)	19500 (8850)	78	19500 (8850)	19500 (8850)	78	19500 (8850)	-	-	-	-
12 (3.66)	44	17200 (7800)	16300 (7390)	64	16300 (7390)	16300 (7390)	72	17000 (7710)	17000 (7710)	76	17100 (7760)	17000 (7710)	76	17100 (7760)	14500 (6580)	78	14500 (6580)	14500 (6580)
14 (4.27)	33	13300 (6030)	12500 (5670)	59	12500 (5670)	12500 (5670												