

Shuttlelift CD5520

Product Guide



Features

- 18 t (20 USt) capacity
- 16,6 m (54.5 ft) four-section, four-plate full power boom
- 9,07 t (10 USt) deck carrying capacity
- Exclusive pivoting boom nose

Features



The reach and capacity to get the job done

The 5,64 m - 16,61 m (18.5 ft - 54.5 ft) four-section boom can be enhanced with optional boom extensions. The 4,6 m (15 ft) fixed swingaway extension offers a maximum tip height of 23,1 m (76 ft) while the 4,6 m - 7,6 m (15 ft - 25 ft) telescopic extension provides a maximum tip height of 26,2 m (86 ft). Both extensions can be offset 0°, -15°, and -30° via the pivoting boom nose.



Pivoting boom nose

Three-position mechanically offset (0°, 40°, and 80°), lowers boom nose head height by 40,5 cm (1.33 ft) when pivoted fully forward. Negative pivoting of 0°, 15°, and 30° allows boom extension offset capability.

Steering

The CD5520 comes standard with three steering modes: front (two-wheel), four-wheel coordinated, and four-wheel crab steer with electronic self alignment. Operators can choose between modes using a three-position rocker switch located on dash panel.



Outriggers

The CD5520 outriggers are two position (0° and 100°) beam/jack style with inverted jack cylinders and pivoting pad.



Operator cab

New operator control layout with tilt/telescoping steering wheel. Automotive style dash panel gauges and indicator lights.

Contents

| | |
|------------------------|----|
| Specifications | 4 |
| Dimensions | 7 |
| Dimensions and weights | 8 |
| Range diagram | 9 |
| Load chart | 10 |
| Rigging chart | 12 |
| Symbols glossary | 13 |

Specifications

Superstructure



Boom

5,64 m – 16,61 m (18.5 ft – 54.5 ft) four-section full power boom.

Maximum tip height: 19,2 m (63 ft)



*Optional boom extensions

4,6 m (15 ft) fixed swingaway extension.
Maximum tip height: 23,1 m (76 ft)

4,6 m – 7,6 m (15 ft – 25 ft) telescopic swingaway extension.

Maximum tip height: 26,2 m (86 ft)

Both extensions can be offset 0°, -15°, and -30° via pivoting boom nose.



Boom nose

Two sheave, quick reeve type with three- pinned pivoting (0°, +40°, and +80°) design to minimize head space requirements. Lowers head height 40,5 cm (1.33 ft) when nose is pivoted fully forward.



Boom elevation

Two double acting hydraulic cylinders with integral holding valve. Elevation: 0° to 80°.



Anti-two block device

Standard anti-two block device (hard wired), which, when activated, provides an audible and visual warning to the operator and “locks out” all functions whose movement can cause two-blocking.



Load Moment Indicator

A simple, effective, and easy to use load moment indicating system used in conjunction with the anti-two block system to assist the operator in efficient operation of the unit within the limits of the load chart. The display panel displays the max. load allowed, the actual hook load, length and angle of the boom, and load radius in Dot Matrix numerical values and provides a load utilization colored bar graph. Inputs by operator are maximum allowed load and parts of line. If non-permitted conditions are approached the L.M.I. will warn the operator with an audible alarm and a warning light and will lock out those functions that may aggravate the condition.



*Load Moment Indicator

“Graphics Display” of boom angle, boom length, load radius, and capacity. Operator input to set the limit parameters based on the load chart. Displays color coded light bar and audible alarm with function cut-out if load exceeds the load chart parameters.



Swing

Ball bearing swing circle with 360° continuous rotation. Worm gear and pinion driven by hydraulic motor. Spring applied, hydraulic released brake. Maximum speed: 2.5 rpm



Hydraulic system

One pressure compensated variable displacement axial piston pump, with load sensing.

Maximum output of: 155 LPM (41.0 GPM)

Maximum operating pressure: 276 bars (4000 p.s.i.)

Six-section valve bank, chassis mounted, operated via dash mounted pilot pressure hydraulic joystick controllers.

151,4 L (40 gal) steel hydraulic reservoir with sight level gauge and steel side plating to guard against side impact.

Return line replaceable filter with by-pass protection and service indicator. Cartridge filter rating of three micron.



Hoist specifications

Two speed gear motor driven hoist with automatic spring applied / hydraulically released wet brake. Smooth drum with cable follower.

Maximum hoist pull (first layer): 63,6 kN (14,300 lb)

Maximum permissible single line pull:
44,5 kN (10,000 lb.) (3.5:1 design factor)

Maximum single line speed: 64 m/min (210 fpm)

Rope construction: 6 x 19 XXIPS / IWRC

Rope diameter: 14 mm (9/16 in)

Rope length: 97,5 m (320 ft)

Specifications

Carrier



Chassis

High strength alloy frame constructed with integral outrigger housings; front and rear lifting, tie-down, and towing lugs. 66.3 sq. ft. carrydeck size with 9072 kg (20,000 lb) deck only carrying capacity. Deck coated with anti-skid treatment.



Outriggers

Single stage hydraulic telescoping beam with oblique style jack cylinder on all four corners. Provides extended and down and retracted and down lifting capabilities. Integral holding valve on both beam and jack. Outrigger positioning indicator located in dash display. Outrigger pad size: 222 mm x 254 mm (8.75 in x 10 in)

Maximum outrigger pad load: 15 876 kg (35,000 lb).



Outrigger controls

Independent outrigger control rocker switches for beam or jack selection with a separate extend /retract rocker selector switch. 360° level bubble located inside cab.



Engine (Tier IV)

Cummins QSB 3,3 L four cylinder / turbo-charged diesel rated at 75kW (100 hp) at 2600 rpm. Includes standard 110V engine block heater and air intake "Grid" heater. Engine hourmeter located in dash display. Alternator: 120 amp. Maximum Torque: 414Nm (305 ft/lb). Fuel requirements: Maximum of 15 ppm sulphur content Requires "Ultra Low" diesel fuel.

NOTE: Tier IV required for sale in North America and European Union countries.



Engine (Tier III)

Cummins QSB 3.3L four cylinder / turbo-charged diesel rated at 74kW (99 hp) at 2600 r.p.m. Includes std. 110V engine block heater and air intake "Grid" heater. Engine hourmeter located in dash display. Alternator: 90 amp. Maximum Torque: 415 Nm (306 ft/lb).

NOTE: Required for sale outside of North America and European Union countries.



Fuel tank capacity

Steel with side impact plate. Capacity: 151,4L (40 gal).



Transmission

Powershift with four speeds forward and four reverse. Steering column mounted shifter.



Operators control station

Frame mounted, open air style control station with cab shell includes all crane functions and driving controls and equipped with overhead safety glass. Other standard equipment includes a suspension seat with seat belt, sight level bubble and 1,1 kg (2.5 lb) fire extinguisher, and tilt steering wheel. The dash panel will display the fuel level gauge, water temperature gauge, engine r.p.m., battery voltage, and hour meter. Indicator lights will display parking brake, low transmission pressure, low brake pressure, oscillating axle lock, outrigger position, headlights, work lights (if ordered), and hoist 3rd wrap (if ordered). Crane function indicator and turn signal indicators are also included. The load indicator display will be mounted on the top of the dash panel for direct line of sight for the operator.



*Operators control station enclosed

Includes the standard cab shell and all controls and indicators noted above, with the addition of front, rear, and right side glass, a split (two-piece) hinged door with sliding glass, front windshield wiper and washer, hot water heater and defroster with fan and cab dome light.



Electrical system

One heavy duty maintenance free 12V battery, 820CCA at 0°F.



Drive

Two-wheel (front-wheel) as standard with four-wheel drive as an option. Drive axles supplied with planetary hubs and limited slip differential.

Specifications

Carrier continued



Steer

Standard three steering modes.
Front (two-wheel), four-wheel coordinated, and four-wheel crab steer with electronic self alignment.
Three position rocker switch located on dash panel.

Outside Turning Radius:
Two wheel steer: 6,2 m (20 ft 4.8 in)
Four wheel steer: 3,9 m (13 ft 1 in)



Suspension/axles

Front: Drive / steer in both two-wheel drive and four-wheel drive
Rear: non-drive with steer in two-wheel drive, drive/steer in four-wheel drive.

Front axle is rigid mounted to frame. Rear axle offers 1.5° of oscillation.



Brakes

Hydraulic actuated internal wet-disc service brake acting on each drive wheel. Dash mounted rocker switch with indicator light for activating or release of the dry disc parking brake mounted on the transmission output yoke.



Tires

Tubeless type, semi-aggressive tread. 12.00 R20



Lights

Full LED lighting includes turn indicators, head, tail, brake, and hazard warning lights recessed mounted.



Maximum speed

33,8 km/h (21.0 mph)



Gradeability (theoretical)

68%.....(to drive train stall) NO LOAD
40%....(to drive train stall) with 9072 kg
(20,000 lb) DECK LOAD

Gross vehicle weight (G.V.W.)

16 220 kg (35,758 lb) basic unit with Tier IV engine.

Miscellaneous standard equipment

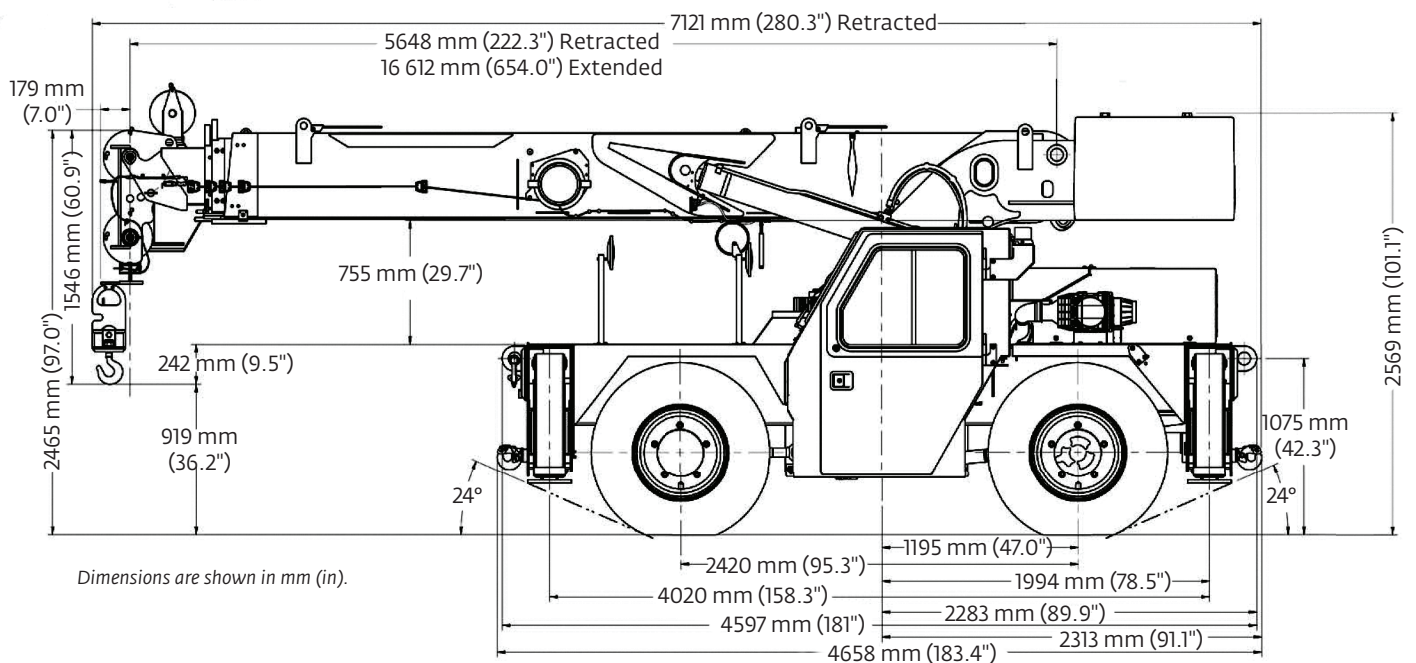
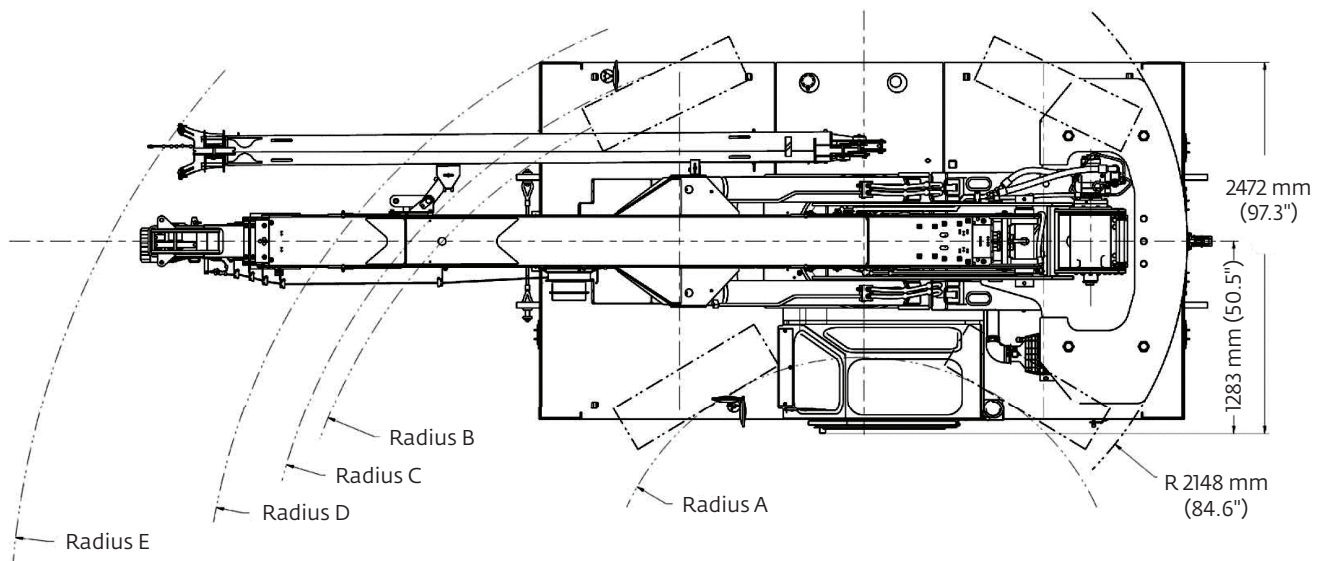
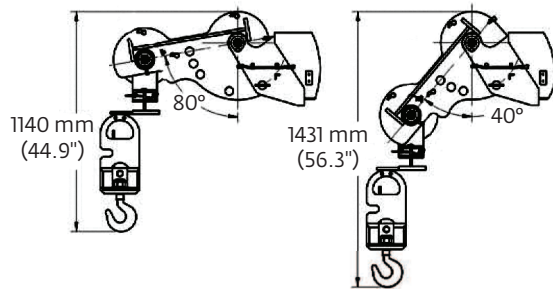
18 t (20 USt) two-sheave low profile “galvanize coated” hook block with “quick reeve design”, back-up motion alarm, outrigger motion alarm, no-skid decking, front and rear lifting, towing, and tie-down lugs.

*Optional equipment

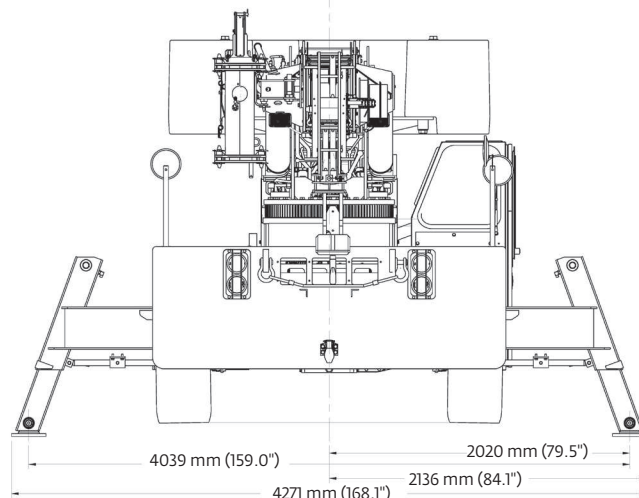
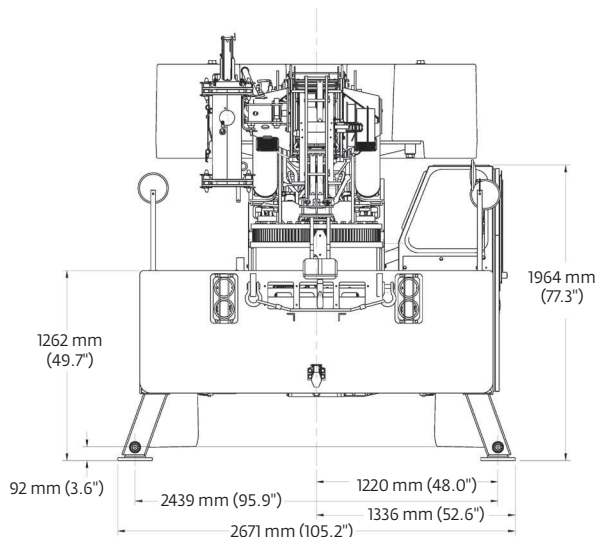
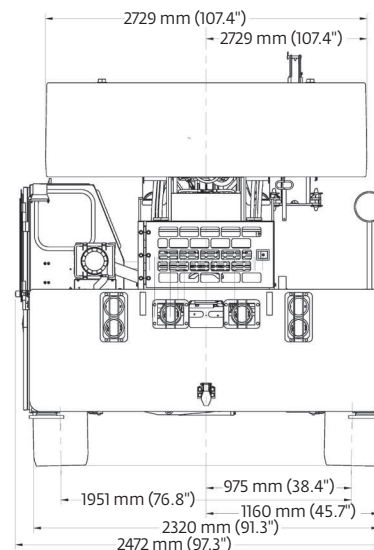
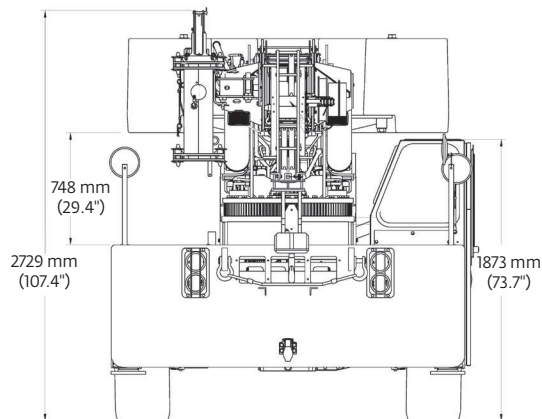
- ▶ Auxiliary Lighting: Includes cab mounted amber flashing light and dual base boom mounted LED work lights.
- ▶ Convenience Package: Includes front and rear pintle hitch, dual rear view mirrors, head and tail light metal mesh grille covers.
- ▶ Enclosed Cab Package: Includes heater and defroster, cab dome light, all window glass, and two-piece split door.
- ▶ Four-wheel drive
- ▶ Below deck hydraulic tow winch with 4536 kg (10,000 lb) capacity.
- ▶ 4,5 m (15 ft) fixed boom extension
- ▶ 4,5 m – 7,6 m (15 ft – 25 ft) telescopic boom extension
- ▶ Air conditioning (closed cab option required)
- ▶ Hoist third wrap indicator with hoist function cut-out
- ▶ Hoist drum rotation indicator
- ▶ 360° swing lock
- ▶ C.E. compliant package

Dimensions

| Dimensions | | | | | |
|------------------|-------------------------|----------------------------|---------------------------|----------------------------|---------------------------|
| | A | B | C | D | E |
| Two-wheel steer | 3375 mm (11 ft 1 in) | 6058 mm (19 ft 10.5 in) | 6218 mm (20 ft 4.8 in) | 6675 mm (21 ft 10.8 in) | 7407 mm (24 ft 3.6 in) |
| Four-wheel steer | 1722 mm (5 ft 8 in) | 3841 mm (12 ft 7 in) | 3993 mm (13 ft 1 in) | 4481 mm (14 ft 8 in) | 5380 mm (17 ft 8 in) |



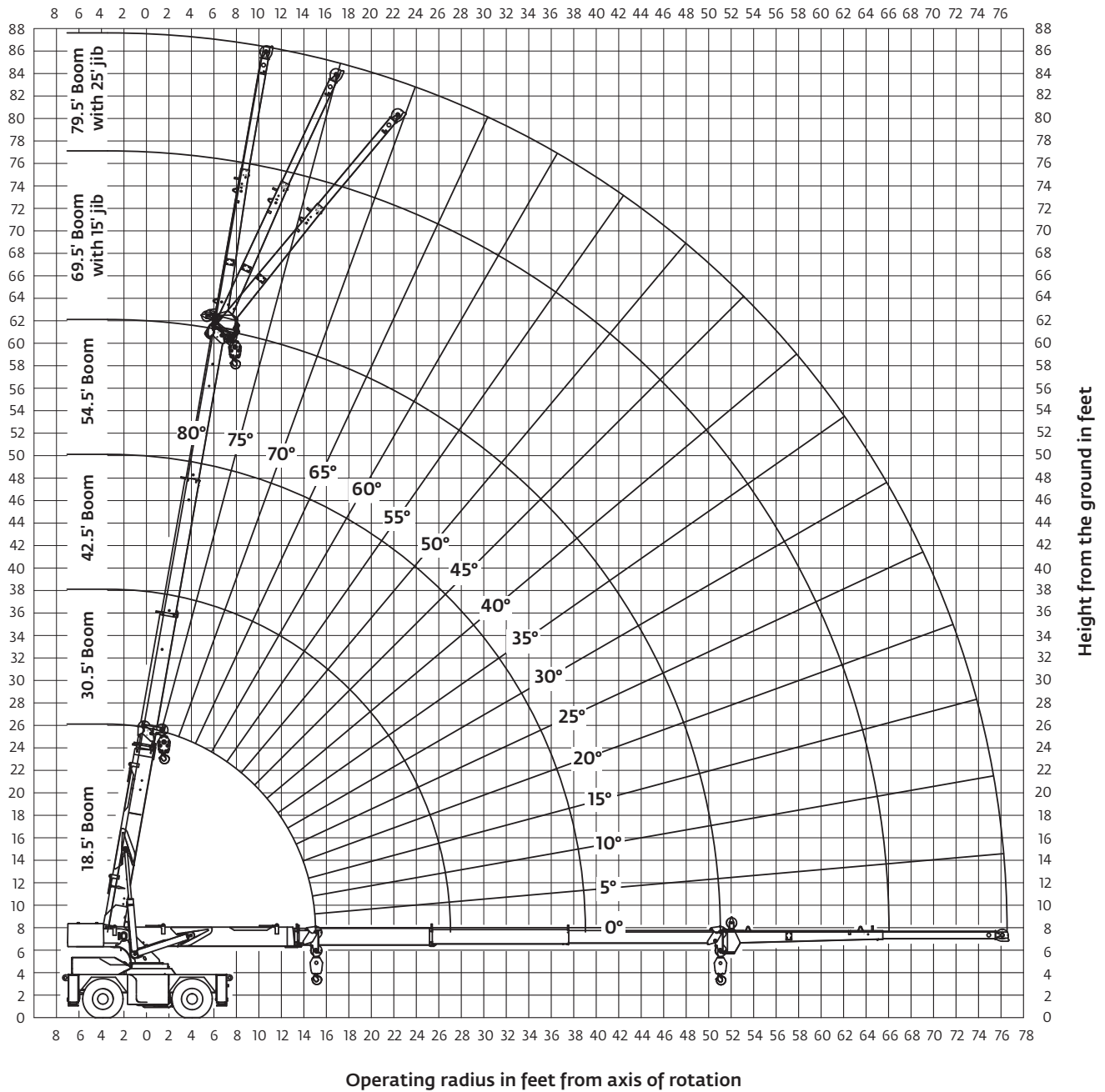
Dimensions and weights



Weights

| | GVW | | Front | | Rear | |
|--|--------|--------|-------|--------|--------|--------|
| | kg | lb | kg | lb | kg | lb |
| Basic machine: Including 16,6 m (54.5 ft) main boom, main hoist with 97,5 m (320 ft) of wire rope, 18 t (20 USt) hook block, full counterweight, Tier IV engine | 16 220 | 35,758 | 6203 | 13,675 | 10 017 | 22,083 |
| Add: 4,6 m (15 ft) fixed swingaway extension and extension carrier brackets and downhaul weight | 199 | 438 | 323 | 713 | -125 | -275 |
| Crane weight | 16 419 | 36,196 | 6526 | 14,387 | 9893 | 21,809 |
| Basic machine: Including 16,6 m (54.5 ft) main boom, main hoist with 97,5 m (320 ft) of wire rope, 18 t (20 USt) hook block, full counterweight, Tier IV engine | 16 220 | 35,758 | 6203 | 13,675 | 10 017 | 22,083 |
| Add: Enclosed cab, heater and glass | 84,8 | 187 | 37,1 | 82 | 47,6 | 105 |
| Crane weight | 16 305 | 35,945 | 6240 | 13,757 | 10 064 | 22,188 |
| Basic machine: Including 16,6 m (54.5 ft) main boom, main hoist with 97,5 m (320 ft) of wire rope, 18 t (20 USt) hook block, full counterweight, Tier IV engine | 16 220 | 35,758 | 6203 | 13,675 | 10 017 | 22,083 |
| Add: 4,6 m - 7,6 m (15 ft - 25 ft) telescopic swingaway extension and extension carrier brackets and downhaul weight | 344 | 758 | 522 | 1151 | -178 | -393 |
| Crane weight | 16 564 | 36,516 | 6725 | 14,826 | 9839 | 21,690 |

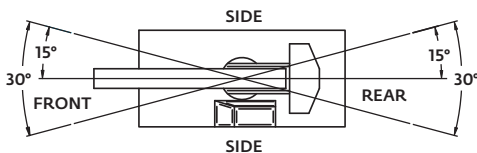
Range diagram



Load chart

| MAIN BOOM LOAD RATINGS ON OUTRIGGERS Extended and Down 360° or Retracted and Down Front/Rear | | | | | | | | |
|---|------------------------|-----------------------|------------------------|-----------------------|------------------------|-----------------------|------------------------|-----------------------|
| Radius (ft) | 18.5 ft BOOM | | 30.5 ft BOOM | | 42.5 ft BOOM | | 54.5 ft BOOM | |
| | Boom Angle (deg) | Rated Load (lb) | Boom Angle (deg) | Rated Load (lb) | Boom Angle (deg) | Rated Load (lb) | Boom Angle (deg) | Rated Load (lb) |
| 6 | 65 | 40000 | 75.5 | 24000 | — | — | — | — |
| 8 | 57.5 | 33850 | 71.5 | 24000 | 77.5 | 23650 | — | — |
| 10 | 49.5 | 30100 | 67.5 | 24000 | 75 | 21550 | 79 | 16800 |
| 12 | 39.5 | 26950 | 63 | 24000 | 72 | 19850 | 77 | 15350 |
| 14 | 25.5 | 23550 | 58.5 | 24000 | 69 | 18050 | 74.5 | 14100 |
| 15 | 0 | 18900 | 56.5 | 22500 | 67.5 | 17250 | 73.5 | 13500 |
| 16 | — | — | 54 | 21000 | 66 | 16550 | 72.5 | 13000 |
| 18 | — | — | 49 | 18450 | 63 | 15250 | 70 | 12100 |
| 20 | — | — | 43.5 | 16300 | 60 | 14250 | 68 | 11250 |
| 22 | — | — | 37 | 14150 | 56.5 | 13300 | 65.5 | 10550 |
| 24 | — | — | 29.5 | 12250 | 53 | 12200 | 63 | 9940 |
| 26 | — | — | 19 | 10700 | 49.5 | 10750 | 60.5 | 9380 |
| 27 | — | — | 0 | 10050 | 47.5 | 10150 | 59.5 | 9120 |
| 28 | — | — | — | — | 45.5 | 9600 | 58 | 8880 |
| 30 | — | — | — | — | 41.5 | 8620 | 55.5 | 8430 |
| 32 | — | — | — | — | 37 | 7790 | 53 | 8020 |
| 34 | — | — | — | — | 31.5 | 7090 | 50 | 7300 |
| 36 | — | — | — | — | 25 | 6470 | 47 | 6680 |
| 38 | — | — | — | — | 16 | 5920 | 44 | 6130 |
| 39 | — | — | — | — | 0 | 5680 | 42.5 | 5890 |
| 40 | — | — | — | — | — | — | 40.5 | 5650 |
| 42 | — | — | — | — | — | — | 37 | 5230 |
| 44 | — | — | — | — | — | — | 33 | 4850 |
| 46 | — | — | — | — | — | — | 28.5 | 4500 |
| 48 | — | — | — | — | — | — | 23 | 4180 |
| 51 | — | — | — | — | — | — | 0 | 3760 |

| MAIN BOOM LOAD RATINGS ON OUTRIGGERS Retracted and Down 360° | | | | | | | | |
|---|------------------------|-----------------------|------------------------|-----------------------|------------------------|-----------------------|------------------------|-----------------------|
| Radius (ft) | 18.5 ft BOOM | | 30.5 ft BOOM | | 42.5 ft BOOM | | 54.5 ft BOOM | |
| | Boom Angle (deg) | Rated Load (lb) | Boom Angle (deg) | Rated Load (lb) | Boom Angle (deg) | Rated Load (lb) | Boom Angle (deg) | Rated Load (lb) |
| 6 | 65 | 40000 | 75.5 | 24000 | — | — | — | — |
| 8 | 57.5 | 33850 | 71.5 | 24000 | 77.5 | 23650 | — | — |
| 10 | 49.5 | 24800 | 67.5 | 22950 | 75 | 21100 | 79 | 16800 |
| 12 | 39.5 | 17900 | 63 | 17950 | 72 | 16750 | 77 | 15350 |
| 14 | 25.5 | 13750 | 58.5 | 14500 | 69 | 13750 | 74.5 | 13000 |
| 15 | 0 | 12200 | 56.5 | 13000 | 67.5 | 12600 | 73.5 | 11950 |
| 16 | — | — | 54 | 11750 | 66 | 11500 | 72.5 | 11050 |
| 18 | — | — | 49 | 9780 | 63 | 9590 | 70 | 9560 |
| 20 | — | — | 43.5 | 8250 | 60 | 8150 | 68 | 8360 |
| 22 | — | — | 37 | 7040 | 56.5 | 7030 | 65.5 | 7360 |
| 24 | — | — | 29.5 | 6070 | 53 | 6120 | 63 | 6430 |
| 26 | — | — | 19 | 5270 | 49.5 | 5380 | 60.5 | 5680 |
| 27 | — | — | 0 | 4930 | 47.5 | 5050 | 59.5 | 5350 |
| 28 | — | — | — | — | 45.5 | 4750 | 58 | 5050 |
| 30 | — | — | — | — | 41.5 | 4230 | 55.5 | 4520 |
| 32 | — | — | — | — | 37 | 3780 | 53 | 4050 |
| 34 | — | — | — | — | 31.5 | 3380 | 50 | 3650 |
| 36 | — | — | — | — | 25 | 3040 | 47 | 3300 |
| 38 | — | — | — | — | 16 | 2740 | 44 | 2980 |
| 39 | — | — | — | — | 0 | 2600 | 42.5 | 2840 |
| 40 | — | — | — | — | — | — | 40.5 | 2710 |
| 42 | — | — | — | — | — | — | 37 | 2460 |
| 44 | — | — | — | — | — | — | 33 | 2240 |
| 46 | — | — | — | — | — | — | 28.5 | 2030 |
| 48 | — | — | — | — | — | — | 23 | 1840 |
| 51 | — | — | — | — | — | — | 0 | 1580 |



1) The rated loads are the maximum lift capacities as determined by operating radius, boom length and boom angle. The operating radius is the horizontal distance from a projection of the axis of rotation to the supporting surface, before loading, to the center of vertical hoist line or tackle with load applied.

2) The rated loads shown on outriggers do not exceed 85% of actual tipping. The rated loads shown on rubber do not exceed 75% of actual tipping. These ratings are based on freely suspended loads with the crane leveled, standing on a firm, uniform supporting surface. Practical working loads depend on supporting surface, operating radius and other factors affecting stability. Hazardous surroundings, climatic conditions, experience of personnel and proper training must all be taken into account by the operator.

3) The weights of all load handling devices such as hooks, hook blocks, slings, etc., except the hoist rope, shall be considered part of the load. See above.

4) Ratings on outriggers are for either outriggers fully extended and down or fully retracted and down. Ratings for outriggers fully retracted and down will apply for any intermediate outrigger setting.

5) Ratings on rubber depend on 12.00R20 tire capacity, condition of tires and proper inflation pressure (130 psi). Loads on rubber may be transported at a maximum speed of 2.5 mph on a smooth, hard, level surface with boom retracted to the shortest length possible and centered over front. For 360° ratings on rubber, rear axle oscillation locks must be in place. Do not use jib with crane on rubber.

6) For operating radius not shown, use load rating of next larger radius.

7) The maximum deck load only is 20,000 lb. Combined boom and deck loads are not permitted on rubber.

8) Do not induce any external side loads to boom or jib.

NOTES:
SHADED AREAS ARE GOVERNED BY STRUCTURAL STRENGTH, DO NOT RELY ON TIPPING.

OPERATION OF THIS EQUIPMENT IN EXCESS OF RATING CHARTS AND DISREGARD OF INSTRUCTIONS IS DANGEROUS AND VOIDS WARRANTY.

THIS CHART IS ONLY A GUIDE AND SHOULD NOT BE USED TO OPERATE THE CRANE.

The individual crane's load chart, operating instructions and other instructional plates must be read and understood prior to operating the crane.

Load chart

| 15 FT JIB CAPACITIES ON EXTENDED OUTRIGGERS | | | | | |
|---|----------------------|----------------------|----------------------|----------------------|-----------------|
| Main Boom Angle (deg) | Jib Offset Angle | | | | |
| | 0 deg | | 15 deg | | 30 deg |
| | To 42.5 ft Main Boom | To 54.5 ft Main Boom | To 42.5 ft Main Boom | To 54.5 ft Main Boom | Any Boom Length |
| 80 | — | — | — | — | — |
| 75 | 9300 | 6500 | 7400 | 5650 | 3500 |
| 70 | 8550 | 6100 | 6950 | 4350 | 2800 |
| 65 | 7950 | 6100 | 6500 | 3800 | 2350 |
| 60 | 7400 | 5650 | 5350 | 3500 | 2150 |
| 55 | 6950 | 4350 | 4550 | 2800 | 1900 |
| 50 | 6500 | 3800 | 4050 | 2350 | 1750 |
| 45 | 5350 | 3500 | 3450 | 2150 | 1670 |
| 40 | 4550 | 2800 | 3000 | 1900 | 1550 |
| 35 | 4050 | 2350 | 3150 | 1750 | — |
| 30 | 3450 | 2150 | 3000 | 1670 | — |
| 25 | 3300 | 1900 | 2800 | 1550 | — |
| 20 | 3150 | 1750 | — | — | — |
| 15 | 3000 | 1670 | — | — | — |
| 10 | 2800 | 1550 | — | — | — |
| 5 | — | — | — | — | — |
| 0 | — | — | — | — | — |

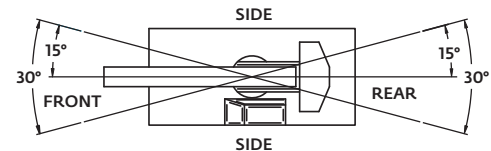
| 15 FT - 25 FT JIB CAPACITIES ON EXTENDED OUTRIGGERS | | | | | | | | | | |
|---|----------------------|----------------------|----------------------|----------------------|-----------------|----------------------|----------------------|----------------------|----------------------|-----------------|
| Main Boom Angle (deg) | 15 FT Length | | | | | 25 FT Length | | | | |
| | Jib Offset Angle | | | | | Jib Offset Angle | | | | |
| | 0 deg | | 15 deg | | 30 deg | 0 deg | | 15 deg | | 30 deg |
| | To 42.5 ft Main Boom | To 54.5 ft Main Boom | To 42.5 ft Main Boom | To 54.5 ft Main Boom | Any Boom Length | To 42.5 ft Main Boom | To 54.5 ft Main Boom | To 42.5 ft Main Boom | To 54.5 ft Main Boom | Any Boom Length |
| 80 | 8500 | 8550 | 5100 | 4770 | 3060 | 5830 | 5800 | 3710 | 3460 | 2200 |
| 75 | 6990 | 6650 | 4400 | 4100 | 2640 | 5120 | 4860 | 3190 | 2970 | 1890 |
| 70 | 5940 | 5580 | 3790 | 3540 | 2290 | 4330 | 4070 | 2740 | 2560 | 1630 |
| 65 | 5100 | 4770 | 3270 | 3060 | 1990 | 3710 | 3460 | 2350 | 2200 | 1410 |
| 60 | 4400 | 4100 | 2810 | 2640 | 1750 | 3190 | 2970 | 2020 | 1890 | 1230 |
| 55 | 3790 | 3540 | 2420 | 2290 | 1560 | 2740 | 2560 | 1730 | 1630 | 1090 |
| 50 | 3270 | 3060 | 2090 | 1990 | 1430 | 2350 | 2200 | 1480 | 1410 | 990 |
| 45 | 2810 | 2640 | 1830 | 1750 | 1370 | 2020 | 1890 | 1290 | 1230 | 950 |
| 40 | 2420 | 2290 | 1630 | 1560 | 1370 | 1730 | 1630 | 1140 | 1090 | 950 |
| 35 | 2090 | 1990 | 1490 | 1430 | 1280 | 1480 | 1410 | 1040 | 990 | 900 |
| 30 | 1830 | 1750 | 1440 | 1370 | 1250 | 1290 | 1230 | 1000 | 950 | 800 |
| 25 | 1630 | 1560 | 1440 | 1370 | — | 1140 | 1090 | 1000 | 950 | — |
| 20 | 1490 | 1430 | 1440 | 1280 | — | 1040 | 990 | 900 | 900 | — |
| 15 | 1440 | 1370 | 1250 | 1250 | — | 1000 | 950 | 800 | 800 | — |
| 10 | 1440 | 1370 | — | — | — | 1000 | 950 | — | — | — |
| 5 | 1440 | 1280 | — | — | — | 900 | 900 | — | — | — |
| 0 | 1250 | 1280 | — | — | — | 800 | 800 | — | — | — |

| MAIN BOOM ON RUBBER | | |
|---------------------|-------------------|------------------|
| Any Boom Length | | |
| Radius (ft) | Front Rating (lb) | 360° Rating (lb) |
| 6 | 16000 | 15500 |
| 8 | 14100 | 13550 |
| 10 | 11250 | 10800 |
| 12 | 9860 | 8880 |
| 14 | 8700 | 7420 |
| 15 | 8190 | 6800 |
| 16 | 7720 | 6350 |
| 18 | 6890 | 5890 |
| 20 | 6180 | 5070 |
| 22 | 5570 | 4370 |
| 24 | 4990 | 3760 |
| 26 | 4460 | 3250 |
| 27 | 4220 | 3010 |
| 28 | 4100 | 2810 |
| 30 | 3680 | 2690 |
| 32 | 3300 | 2580 |
| 34 | 2950 | 2130 |
| 36 | 2640 | 1890 |
| 38 | 2350 | 1650 |
| 39 | 2220 | 1540 |
| 40 | 2160 | 1420 |
| 42 | 2110 | 1300 |
| 44 | 1910 | 1170 |
| 46 | 1720 | 1030 |
| 48 | 1550 | 900 |
| 51 | 1310 | 730 |

NOTES:
JIB CAPACITY IS LIMITED BY BOTH STRUCTURAL CAPACITY CHART AND MAIN CAPACITY CHART.

SHADED AREAS ARE GOVERNED BY STRUCTURAL STRENGTH, DO NOT RELY ON TIPPING.

OPERATION OF THIS EQUIPMENT IN EXCESS OF RATING CHARTS AND DISREGARD OF INSTRUCTIONS IS DANGEROUS AND VOIDS WARRANTY.



1) The rated loads are the maximum lift capacities as determined by operating radius, boom length and boom angle. The operating radius is the horizontal distance from a projection of the axis of rotation to the supporting surface, before loading, to the center of vertical hoist line or tackle with load applied.

2) The rated loads shown on outriggers do not exceed 85% of actual tipping. The rated loads shown on rubber do not exceed 75% of actual tipping. These ratings are based on freely suspended loads with the crane leveled, standing on a firm, uniform supporting surface. Practical working loads depend on supporting surface, operating radius and other factors affecting stability. Hazardous surroundings, climatic conditions, experience of personnel and proper training must all be taken into account by the operator.

3) The weights of all load handling devices such as hooks, hook blocks, slings, etc., except the hoist rope, shall be considered part of the load. See above.

4) Ratings on outriggers are for either outriggers fully extended and down or fully retracted and down. Ratings for outriggers fully retracted and down will apply for any intermediate outrigger setting.

5) Ratings on rubber depend on 12.00R20 tire capacity, condition of tires and proper inflation pressure (130 psi). Loads on rubber may be transported at a maximum speed of 2.5 mph on a smooth, hard, level surface with boom retracted to the shortest length possible and centered over front. For 360° ratings on rubber, rear axle oscillation locks must be in place. Do not use jib with crane on rubber.


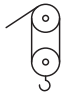
6) For operating radius not shown, use load rating of next larger radius.

7) The maximum deck load only is 20,000 lb. Combined boom and deck loads are not permitted on rubber.

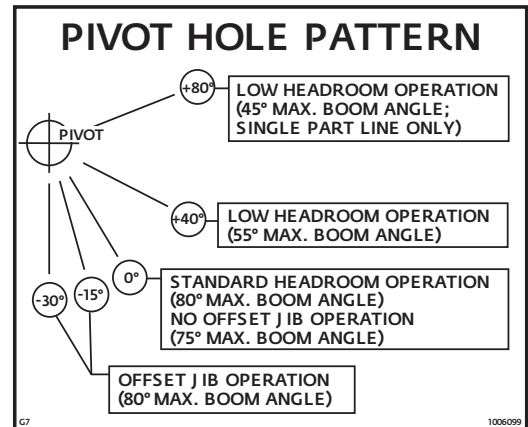
8) Do not induce any external side loads to boom or jib.

Rigging chart

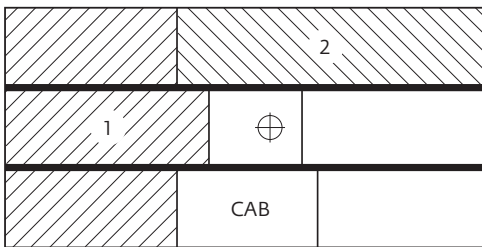
CD5520

| RIGGING CHART | |
|---|---|
|  1-PART 0-10,000 lb |  4-PART 0-40,000 lb |
| WIRE ROPE: 9/16" Diameter 6 X 19 Bright Minimum required breaking strength = 37,000 lb | |

MAXIMUM PERMISSIBLE SINGLE LINE PULL = 10,000 lb



LOAD DISTRIBUTION CHART



Maximum Allowable Uniformly Distributed Load

| | |
|-----------------------------------|---------------------|
| AREA 1 | |
| 4,01 m ² (43.2 sq.ft.) | 5985 kg (13,195 lb) |
| AREA 2 | |
| 2,15 m ² (23.1 sq.ft.) | 3087 kg (6805 lb) |
| TOTAL | |
| 6,16 m ² (66.3 sq.ft.) | 9072 kg (20,000 lb) |

1. Maximum travel speed with any or all loads - 4,0 km/h (2.5 MPH)
2. Loads to be transported on smooth level firm surfaces only.
3. Boom must be retracted and in center forward position.
4. Any combination or total of areas 1 and 2 may be used.
5. Lifting is not permitted when carry deck is loaded except for loading and unloading carry deck.
6. Rated pick and carry loads may be transported on deck area 1 provided the load is cribbed directly on the frame rails.

Rating reductions for load handling devices installed kg (lb)

| | From main boom | From jib |
|--|------------------|----------------|
| Main block | 161 kg (356 lb)* | Not applicable |
| Hook and ball | 48 kg (105 lb)* | 48 kg (105 lb) |
| Jib stowed | No reduction | Not applicable |
| 4,6 m (15 ft) jib deployed | 317 kg (700 lb) | No reduction |
| 4,6 m - 7,6 m (15 ft - 25 ft) jib deployed | 544 kg (1200 lb) | No reduction |

*Refer to rating plate for actual weight

Symbols glossary



Axles



Counterweight



Grade



Outriggers



Boom



Drive



Heavy duty jib



Radius



Boom elevation



Electrical system



Hoist



Rotation



Boom extension



Engine



Hookblock



Speed



Boom length



Extension



Hydraulic system



Steering



Boom nose



Frame



Lights



Suspension



Brakes



Fuel tank capacity



Oil



Swing



Cab



Gear



Outrigger controls



Tires



Transmission

Notes

Maniowoc Cranes

Regional headquarters

Americas

Maniowoc, Wisconsin, USA

Tel: +1 920 684 6621

Fax: +1 920 683 6277

Shady Grove, Pennsylvania, USA

Tel: +1 717 597 8121

Fax: +1 717 597 4062

Europe, Middle East, Africa

Ecully, France

Tel: +33 (0)4 72 18 20 20

Fax: +33 (0)4 72 18 20 00

China

Shanghai, China

Tel: +86 21 6457 0066

Fax: +86 21 6457 4955

Greater Asia-Pacific

Singapore

Tel: +65 6264 1188

Fax: +65 6862 4040

Regional offices

Americas

Brazil

Alphaville

Mexico

Monterrey

Chile

Santiago

Europe, Middle East, Africa

Czech Republic

Netvorice

France

Baudemont

Cergy

Decines

Germany

Langenfeld

Hungary

Budapest

Italy

Lainate

Netherlands

Breda

Poland

Warsaw

Portugal

Baltar

Russia

Moscow

South Africa

Johannesburg

U.A.E.

Dubai

U.K.

Buckingham

China

Beijing

Chengdu

Guangzhou

Xian

Greater Asia-Pacific

Australia

Brisbane

Melbourne

Sydney

India

Chennai

Delhi

Hyderabad

Pune

Korea

Seoul

Philippines

Makati City

Singapore

Factories

Brazil

Passo Fundo

China

TaiAn

Zhangjiagang

France

Charlieu

Moulins

Germany

Wilhelmshaven

India

Pune

Italy

Niella Tanaro

Portugal

Baltar

Fânzeres

Slovakia

Saris

USA

Maniowoc

Port Washington

Shady Grove

This document is non-contractual. Constant improvement and engineering progress make it necessary that we reserve the right to make specification, equipment, and price changes without notice. Illustrations shown may include optional equipment and accessories and may not include all standard equipment.