

SHUTTLELIFT

by **Manitowoc**

SCD15

PRELIMINARY

Capacity: 15 USt (13,6 t)

Boom: 15 ft - 41 ft (4,6 m - 12,5 m)

Maximum tip height: 69.5 ft (21,18 m)



Operator's cab with Rayco-Wylie RCL and mechanical lever proportional controls.

Pivoting boom nose

Standard 41 ft (12,5 m) three section or optional 50 ft (15,4 m) four section, full-power synchronized boom

Optional 15 ft (4,6 m) boom extension with bottom swivel headache ball

Planetary winch

One piece cast counterweight

9 USt (8,16 t) deck capacity with anti-skid surface

Three engine options

Full LED lighting

Optional below deck hydraulic winch

Standard open cab or optional enclosed cab with split door design

Three steering modes

Independently controlled single-stage oblique outriggers

Optional 4x4 drive

 Contact your local dealer for more information; or find one on the dealer locator at www.manitowoc.com

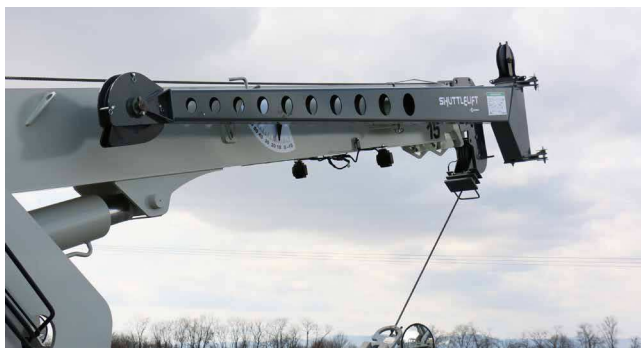
Courtesy of Crane.Market

Maximize your investment

- 9 USt deck carrying capacity
- EPA Tier IV Final compliance without the need for diesel exhaust fluid (DEF)
- Pre-painted components (corrosion prevention for all environments)
- More standard features and numerous utility enhancing options

Operator focused design

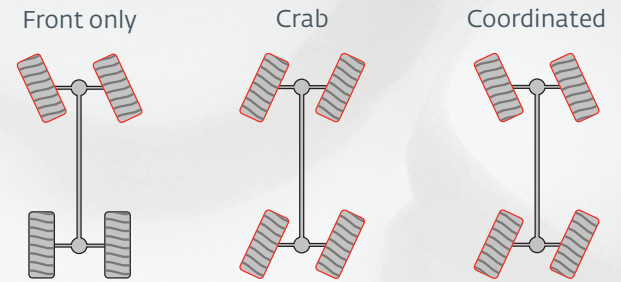
- A storage tray and main storage box are located in the front center of the carrier and are suitable for storing the downhaul ball or hook blocks available on this model
- Stow rigging equipment in a storage box located on the right hand side of the machine. This compartment has a latched door to prevent accidental opening when machine is in operation
- Full LED lighting package (improved visibility and longer lasting)
- Cab is up to 4.8" wider than the common cab providing more operator comfort. Split cab door with sliding glass window
- Graphical, simple to operate RCL system



Optional boom and boom extension

- 17.8 – 50 ft (5,4 – 15,4 m) four section, full power boom
- 15 ft (4,6 m) fixed swingaway extension with maximum tip height of 69.5 ft (21,18 m); extensions can be offset 0°, -15°, and -30° via pivoting boom nose

Steering



- Three modes of steering: two-wheel (front), four-wheel coordinated and crab
- Excellent maneuverability in confined spaces
- Best turning radius in class

Pivoting boom nose

- Allows for more clearance and better access in constricted and confined areas
- Three-position mechanically offset: 0°, 40°, and 80°
- Decreases boom nose head height by more than 1 ft (0,3 m) when pivoted fully forward at 80°
- Negative pivoting offsets of 0°, 15°, and 30° allows the boom extension to be offset if needed



Piston pump hydraulics

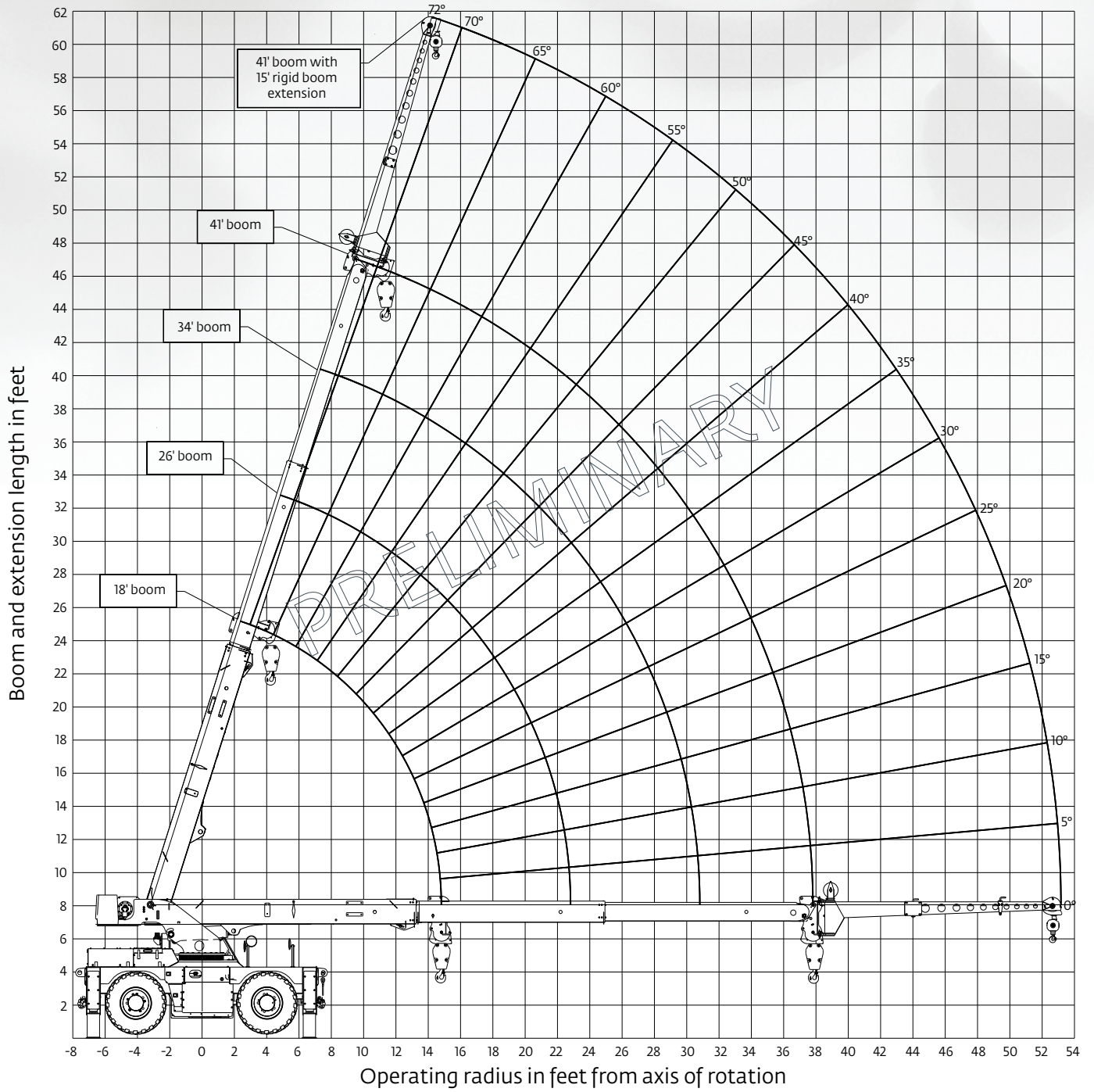
- New design allows for a stronger, smoother, and a more efficient crane that is easy to maintain and operate
- Large swing open access panel for easy serviceability
- Provides excellent multi-function operation speeds

Engine and drive options

- KEM 4.3 Dual Fuel engine LP/Gas
- Tier IV Final Cummins QSF 3.8 L 74 HP engine
- Tier III Cummins QSF 3.8 L 99 HP engine for sales outside the USA and Canada
- 4x4 with oscillating rear axle

PRELIMINARY - Working range

41 ft boom 85% Imperial



PRELIMINARY - Load chart

41 ft boom 85% Imperial



18 ft - 41 ft



100%



360°



Pounds

Feet	18	26	34	41
6	30,000 (64.7)			
8	27,150 (57)	19,800 (68.2)		
10	24,000 (48.4)	19,800 (63.3)		
12	21,500 (38.1)	18,950 (58)	17,350 (66.3)	
14	16,050 (23.3)	16,200 (52.4)	15,150 (62.5)	13,550 (67.6)
14.5	13,800 (0)	15,200 (50.9)	14,750 (61.5)	13,200 (66.8)
16	12,700 (46.2)	12,750 (58.5)	12,200 (64.4)	
18	10,350 (39.2)	10,400 (54.3)	10,400 (61.2)	
20		8670 (30.8)	8730 (49.9)	8730 (57.9)
22		7400 (18.5)	7490 (45.1)	7500 (54.5)
22.5		7120 (0)	7230 (43.8)	7240 (53.6)
24			6510 (39.8)	6520 (50.8)
26			5710 (33.8)	5740 (47)
28			5050 (26.4)	5100 (42.9)
30			4510 (15.6)	4550 (38.3)
30.5			4390 (0)	4430 (37.1)
32				4090 (33.3)
34				3700 (27.3)
36				3360 (19.6)
37.5				3130 (0)

NOTE: () Boom angles are in degrees.

PRELIMINARY - Load chart

41 ft boom 85% Imperial



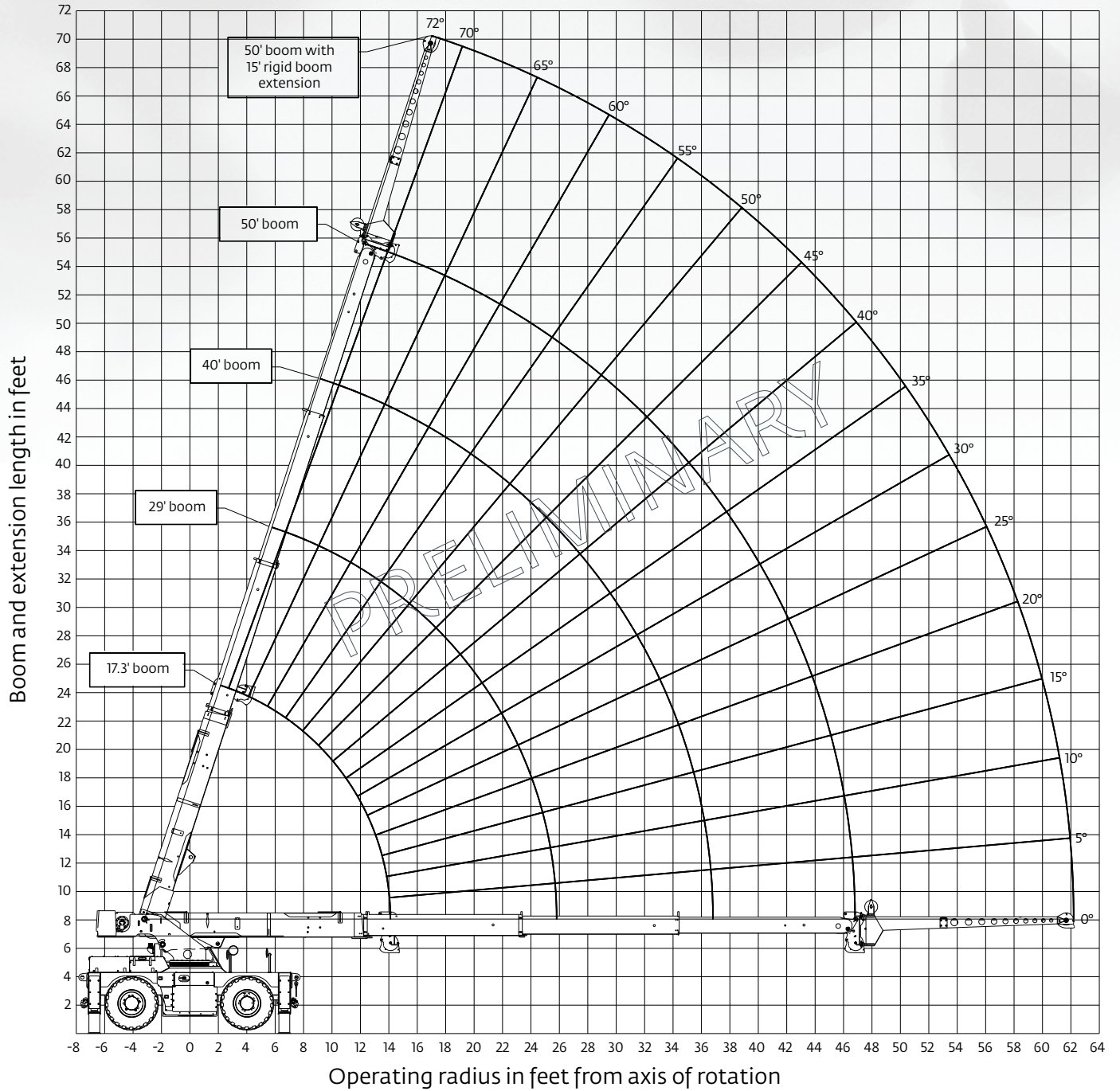
Pounds

Feet	0° OFFSET	15° OFFSET	30° OFFSET
16	7500 (70)		
18	7370 (67.8)		
20	7210 (65.5)	5050 (69.3)	
22	6650 (63.3)	4790 (67)	3780 (70.3)
24	6020 (60.9)	4570 (64.7)	3650 (67.9)
26	5590 (58.6)	4290 (62.3)	3520 (65.4)
28	5220 (56.1)	4120 (59.8)	3410 (62.9)
30	4680 (53.6)	3900 (57.3)	3290 (60.3)
32	4230 (51)	3770 (54.6)	3200 (57.5)
34	3840 (48.3)	3600 (51.9)	3120 (54.7)
36	3500 (45.5)	3450 (49.1)	3030 (51.7)
38	3210 (42.5)	3290 (46.1)	2970 (48.6)
40	2950 (39.4)	3020 (42.9)	2910 (45.3)
42	2720 (36)	2780 (39.4)	2820 (41.6)
44	2510 (32.4)	2560 (35.7)	2600 (37.6)
46	2330 (28.3)	2370 (31.5)	2390 (33)
48	2160 (23.6)	2190 (26.6)	
50	2010 (17.7)	2030 (20.4)	
52	1880 (8.7)		
52.5	1850 (0)		

NOTE: () Boom angles are in degrees.

PRELIMINARY - Working range

50 ft boom 85% Imperial



PRELIMINARY - Load chart

50 ft boom 85% Imperial



17 ft - 50 ft



100%



360°



Pounds

Feet	17.3	29	40	50
6	30,000 (63.5)			
8	25,750 (55.3)			
10	21,250 (46)	16,950 (66.2)		
12	18,050 (34.4)	16,950 (61.7)		
14	13,100 (0)	16,400 (57)	14,950 (66.9)	
16		12,850 (51.9)	12,950 (63.7)	
18		10,400 (46.4)	10,450 (60.4)	10,500 (66.8)
20		8680 (40.3)	8740 (57)	8750 (64.3)
22		7360 (33.1)	7450 (53.4)	7480 (61.7)
24		6320 (23.9)	6430 (49.6)	6450 (59)
25.5		5670 (0)	5800 (46.6)	5820 (56.9)
26			5610 (45.5)	5630 (56.2)
28			4940 (41.2)	4960 (53.3)
30			4370 (36.4)	4410 (50.3)
32			3890 (30.8)	3930 (47.2)
34			3480 (24.1)	3530 (43.9)
36			3120 (14.2)	3170 (40.3)
36.5			3040 (0)	3090 (39.4)
38				2860 (36.5)
40				2590 (32.2)
42				2340 (27.3)
44				2120 (21.3)
46				1930 (12.4)
46.5				1880 (0)

NOTE: () Boom angles are in degrees.

PRELIMINARY - Load chart

50 ft boom 85% Imperial



Pounds

Feet	0° OFFSET	15° OFFSET	30° OFFSET
20	7020 (69.1)		
22	6200 (67.2)		
24	5670 (65.3)	4980 (68.5)	
26	5250 (63.3)	4680 (66.5)	3720 (69.3)
28	5000 (61.3)	4520 (64.5)	3600 (67.2)
30	4550 (59.3)	4210 (62.5)	3500 (65.1)
32	4080 (57.2)	3940 (60.4)	3410 (63)
34	3670 (55.1)	3800 (58.2)	3320 (60.8)
36	3320 (52.9)	3460 (56)	3230 (58.5)
38	3010 (50.6)	3140 (53.7)	3160 (56.2)
40	2740 (48.3)	2850 (51.4)	2940 (53.7)
42	2500 (45.9)	2600 (48.9)	2680 (51.2)
44	2280 (43.4)	2380 (46.4)	2450 (48.5)
46	2090 (40.7)	2170 (43.7)	2230 (45.7)
48	1920 (37.9)	1990 (40.9)	2040 (42.8)
50	1760 (34.9)	1820 (37.8)	1860 (39.6)
52	1610 (31.7)	1670 (34.5)	1700 (36)
54	1480 (28.2)	1530 (30.9)	1550 (32.1)
56	1360 (24.1)	1400 (26.7)	
58	1250 (19.3)	1280 (21.7)	
60	1160 (12.9)		
61.5	1090 (0)		

NOTE: () Boom angles are in degrees.



© The Manitowoc Company, Inc.
02/2017
www.manitowoc.com