

# SKYTRAK TELESCOPIC HANDLER

# 6036 LEGACY

- 6,000 lb. (2727 kg) max. lift capacity and 36' 1" (11,0 m) max. lift height
- Optional attachments for high versatility
- Sealed bearings extend service intervals, lower maintenance costs
- Re-designed cab for improved operator comfort and safety
- 4-speed modulated transmission combined with high performance axles for increased production and maneuverability
- Machine design eliminates the need for liquid filled tires

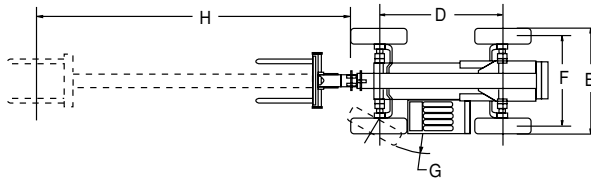
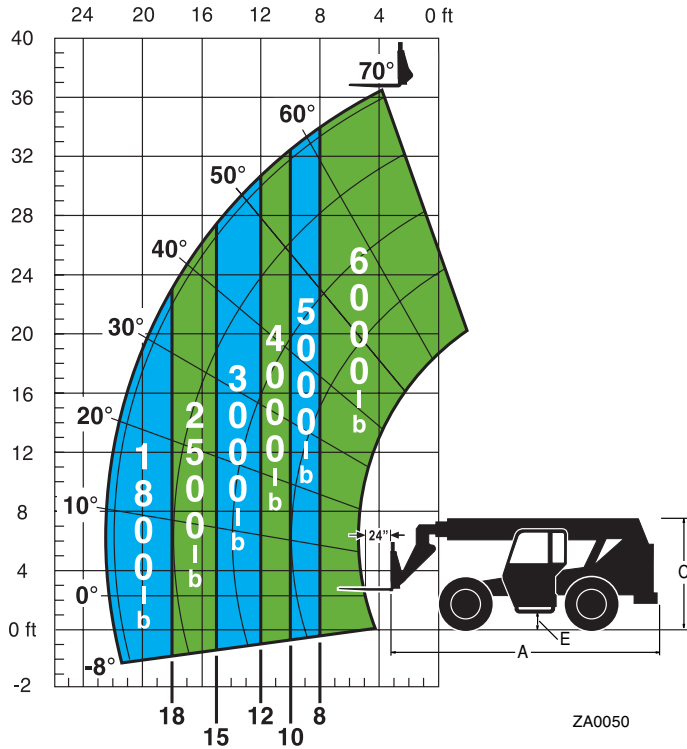


Discontinued Product—Information contained herein is for informational purposes only.  
Copyright 2005. SkyTrak is a registered trademark of JLG Industries, Inc.

# 6036

## LEGACY

Load ratings are in compliance with ASME B56.6-1992 and ASME B56.6b-1998 stability requirements for rough terrain forklifts. Cab meets ASME B56.6-1992 and ASME B56.6b-1998 ROPS/FOPS requirements.



### Dimensions

A. Length less forks	217"	(5512 mm)
B. Width	.98"	(2489 mm)
C. Height	100"	(2540 mm)
D. Wheelbase	113"	(2870 mm)
E. Ground clearance	.16"	(406 mm)
F. Tread	.84"	(2134 mm)
G. Turning clearance	.13'	(4,0 m)
H. Max reach from front tires to 24" (609 mm) load center	22' 4"	(6,8 m)

### Tire Options

- 13.0 x 24 Bias Ply Foam Filled
- 15.5 x 25 Bias Ply

# SPECIFICATIONS

### Engine

Cummins 4BT3.9 Turbo Diesel  
99 HP (74 kW) @ 2500 RPM (U/Min)  
Torque rating 305 lb. ft. (415 Nm) @ 1500 RPM



### Transmission

Modulated powershift, 4-speed forward and 3-speed reverse.

### Axles and Brakes

Full-time planetary 4-wheel drive with inboard mounted internal wet disc brakes.

### Boom

- Telescopic 3-stage welded box section construction using high strength low alloy steel.
- Replaceable high density wear pads, to limit friction, with wear indicators.

### Operating Specs

Max lift capacity	6000 lbs. (2727 kg)
Lift height	36' 1" (11,0 m)
Max reach below grade	2' 1" (0,6 m)
Operating weight	20,095 lbs. (9134 kg)
Hydraulic oil capacity	53 gal. (201 liters)
Fuel tank capacity	35 gal. (132 liters)
Standard tires (air filled)	13.00 x 24, 12 ply
Frame tilt to left or right	10°
Top speed	20 mph

### Standard Equipment

- TRAK-Attach system
- Automatic fork leveling system
- Frame leveling
- Load holding valves on frame level, attachment tilt, extend and lift cylinders
- Variable flow, load sensitive hydraulic system
- 2-wheel, 4-wheel and crab steering
- Hydraulically actuated in board wet disc brakes
- Emergency brake with transmission declutch feature
- ROPS/FOPS operator cab
- Deluxe suspension seat with retractable seat belt
- Dual Joystick controls
- Steering wheel mounted horn and backup alarm
- Instrument cluster with gauges and warning lights
- 12 V electrical system
- Lockable doors, covers and tool box
- Engine block heater
- Rear view mirrors
- Auxiliary hydraulics

### Options

- Transit protection coating
- Enclosed all weather cab
- Basic work lights
- Complete road lights
- Rotating Beacon
- Fenders
- Soft cab enclosure
- Overnight cab cover
- Cold start package

### Attachments

- Standard carriages: 48" (1,22 m), 60" (1,52 m) and 72" (1,83 m)
- ±10° side tilt carriages: 48" (1,22 m), 60" (1,52 m) and 72" (1,83 m)
- ±45° swing carriage: 72" (1,83 m)
- 48" (1,22 m) pallet forks
- 60" (1,52 m) lumber forks
- 48" (1,22 m) block forks
- 12' (3,7 m) truss boom
- Utility bucket
- Wallboard/Sheet material handler
- Hydraulic earth auger
- Concrete bucket
- 96" (2,44m) Windrow broom



901 Sunset Road  
Port Washington, WI 53074 U.S.A.  
Tel: (262) 268-3111 Fax: (262) 268-8959  
www.omniquip.com

WE RESERVE THE RIGHT TO AMEND THESE SPECIFICATIONS AT ANY TIME WITHOUT NOTICE. THE ONLY WARRANTY APPLICABLE IS OUR STANDARD WRITTEN WARRANTY APPLICABLE TO A PARTICULAR PRODUCT AND SALE. WE MAKE NO OTHER WARRANTY, EXPRESSED OR IMPLIED.