

A46JE/A46JRT

ARTICULATED BOOM LIFTS



- Class-leading articulated boom lifts
- Choose from electric or rough terrain diesel models
- Highly manoeuvrable with tight turning radius
- Superb working envelope with zero tailswing
- Robust, reliable and easy to operate

 **snorkel**
www.snorkellifts.com

ARTICULATED BOOM LIFTS

A46JE/A46JRT

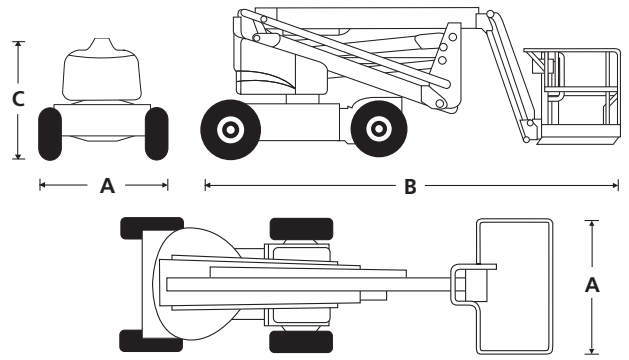
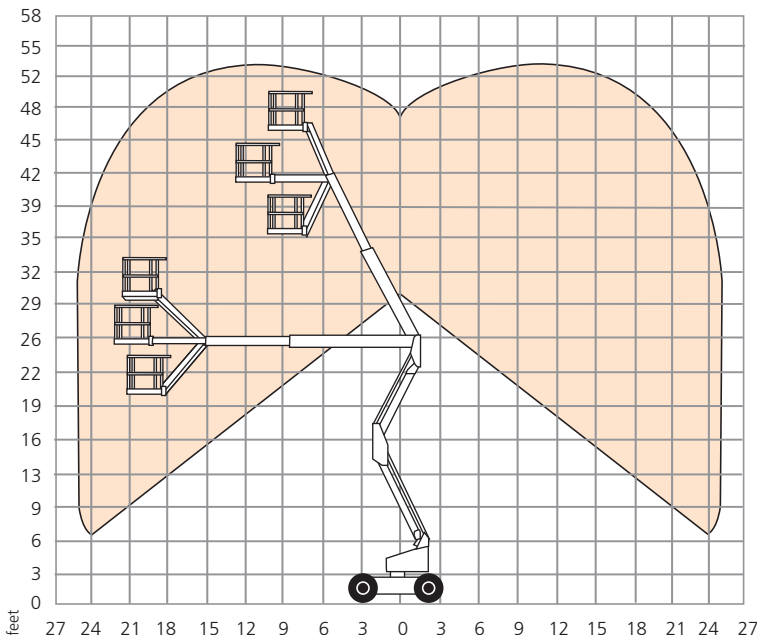
DIMENSIONS	A46JE	A46JRT
Max. working height	52 ft 3 in	52 ft 11 in
Max. platform height	46 ft 3 in	46 ft 11 in
Max. horizontal reach	24 ft 11 in	24 ft 11 in
Platform size	39 in x 72 in	39 in x 72 in
Overall width (A)	5 ft 8 in	6 ft 10 in
Overall length (B)	18 ft 4 in	18 ft 4 in
Stowed height (C)	6 ft 6 in	7 ft 2 in
Ground clearance	6 in	13 in

PERFORMANCE	A46JE	A46JRT
Platform capacity (SWL)	500 lbs	500 lbs
Max. drive height	46 ft 3 in	46 ft 11 in
Max. drive speed (stowed)	3.2 mph	4.5 mph
Max. drive speed (elevated)	0.5 mph	0.8 mph
Jib length	5 ft	5 ft
Jib arc	140 °	140 °
Platform rotation	160 °	160 °
Superstructure rotation	360 ° non-continuous	360 ° non-continuous
Gradeability	17 % / 30 %	22 % / 40 %
Inside turning radius	23 in	32 in
Outside turning radius	9 ft 10 in	10 ft 5 in
Tires	non-marking IN240/55D 17.5	high grip Pneumatic
Controls	proportional	proportional
Drive system	2 wheel drive	4 wheel drive

POWER	A46JE	A46JRT
Power source	8 x 6V 360Ah batteries	Kubota V1505 Turbo Diesel

WEIGHT	A46JE	A46JRT
Weight	14,300 lbs	14,600 lbs

WORKING ENVELOPE



STANDARD FEATURES

- Multi-function, variable speed platform controls
- Oscillating front axle (A46JRT)
- Proportional controls
- Zero tailswing
- Hour meter
- Horn
- Power line to platform
- Battery charge indicator (A46JE)
- Drive motion alarm
- ANSI compliant

OPTIONS

- Special paint colors
- Dual fuel/LP only
- AC generator 110/2000w (A46JRT)
- Airline to platform (A46JRT)
- Cold weather package (A46JRT)
- Non-marking tires (A46JE only)
- Light package (A46JRT)
- Additional battery box assembly (A46JE)
- Extreme environment package (A46JRT)
- GM - DF engine
- Flashing amber light
- Environmental green oil
- CSA compliant

snorkel www.snorkellifts.com

P.O. Box 1160
 St. Joseph, MO 64502-1160, USA
 Tel: 1 (785) 989-3000
 Toll-free: 1 (800) 255-0317
 Sales Fax: 1 (785) 989-3070
 Parts Fax: 1 (785) 989-3077

Specifications subject to change without notice. Photos and diagrams in this brochure are for promotional purposes only. Refer to appropriate Snorkel operators manual for detailed instructions on the proper use and maintenance.