

# A80J/A85JRT

## ARTICULATED BOOM LIFTS



- The ultimate diesel articulated booms
- Excellent aerial manoeuvrability with “up & over” capabilities
- Powerful 4 wheel drive and 4 wheel steer
- Smooth, precise, easy to use controls
- Simple to maintain and service

 **snorkel**  
[www.snorkellifts.com](http://www.snorkellifts.com)

# ARTICULATED BOOM LIFTS

# A80J/A85JRT

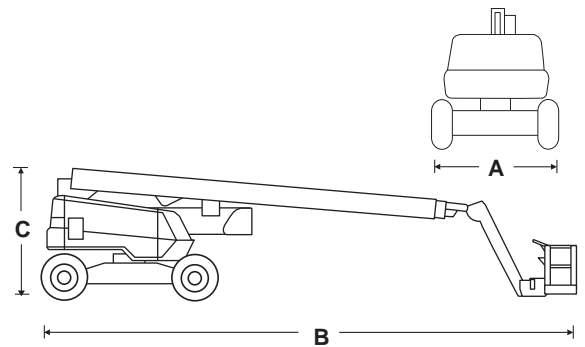
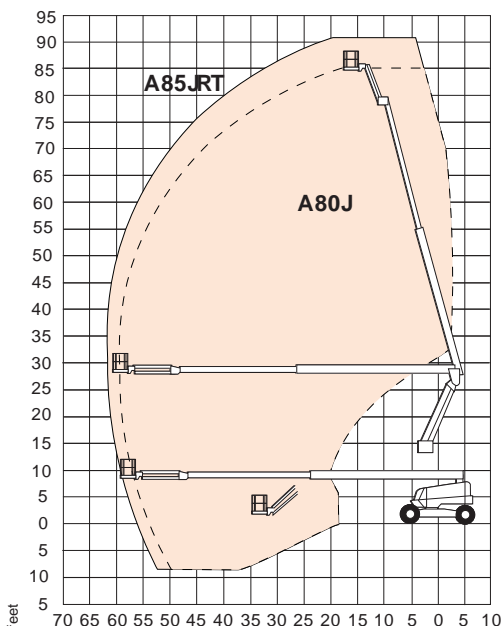
| DIMENSIONS            | A80J        | A85JRT      |
|-----------------------|-------------|-------------|
| Max. working height   | 85 ft 11 in | 90 ft 6 in  |
| Max. platform height  | 79 ft 11 in | 84 ft 6 in  |
| Max. horizontal reach | 59 ft 5 in  | 61 ft 11 in |
| Riser height          | 27 ft 10 in | 27 ft 10 in |
| Platform size         | 3 ft x 8 ft | 3 ft x 8 ft |
| Overall width (A)     | 8 ft 6 in   | 8 ft 6 in   |
| Overall length (B)    | 32 ft 2 in  | 41 ft 2 in  |
| Stowed height (C)     | 9 ft 10 in  | 9 ft 10 in  |
| Ground clearance      | 13 in       | 13 in       |

| PERFORMANCE                 | A80J                            | A85JRT             |
|-----------------------------|---------------------------------|--------------------|
| Platform capacity (SWL)     | 500 lbs                         | 500 lbs            |
| Max. drive height           | 79 ft 11 in                     | 84 ft 6 in         |
| Max. drive speed (stowed)   | 3 mph                           | 3 mph              |
| Max. drive speed (elevated) | 0.6 mph                         | 0.6 mph            |
| Jib length                  | 5 ft                            | 5ft 10in           |
| Jib working arc             | 140 °                           | 135 °              |
| Jib rotation                | n/a                             | 140 ° side to side |
| Platform rotation           | 150°                            | 150 °              |
| Superstructure rotation     | continuous                      | continuous         |
| Gradeability                | 30%                             | 30 %               |
| Inside turning radius       | 7 ft 10 in                      | 7 ft 10 in         |
| Tires                       | 15 x 625 loader lug foam filled |                    |
| Controls                    | proportional joystick           |                    |
| Drive system                | 4 wheel drive                   |                    |

| POWER        | A80J   | A85JRT |
|--------------|--|--------|
| Power source | Deutz F4L-2011 (64hp) air cooled engine<br>Cummins 3.3 (65hp) liquid cooled engine<br>GM 3L Gas/Dual Fuel liquid cooled engine |        |

| WEIGHT | A80J       | A85JRT     |
|--------|------------|------------|
| Weight | 36,800 lbs | 38,580 lbs |

## WORKING ENVELOPE



## STANDARD FEATURES

- 5 ft 9 in, 135 ° jib, 140 ° side to side rotation (A85JRT)
- Hydraulic powered platform rotation
- 4 wheel drive
- 4 wheel steer, including crab steer
- Foam filled lug tires
- Horn
- Flashing amber lights
- Power line to platform
- Driveable at full height
- Drive motion alarm
- ANSI compliant

## OPTIONS

- Special paint colors
- Hydraulic generator 12kW and 2kW
- Cold weather package
- Extreme cold weather package
- Light package
- Cummins engine
- GM engine
- Extreme environment package
- Aircraft package
- Tow packages
- Glazier package
- 12k Generator/welder package
- Environmental green oil
- CSA compliant

**snorkel**

www.snorkellifts.com

P.O. Box 1160  
St. Joseph, MO 64502-1160, USA  
Tel: 1 (785) 989-3000  
Toll-free: 1 (800) 255-0317  
Sales Fax: 1 (785) 989-3070  
Parts Fax: 1 (785) 989-3077

Specifications subject to change without notice. Photos and diagrams in this brochure are for promotional purposes only. Refer to appropriate Snorkel operators manual for detailed instructions on the proper use and maintenance.