

# AB60JRT

## ARTICULATED BOOM LIFT



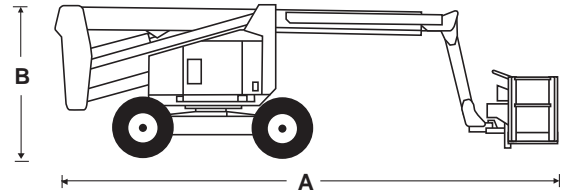
- Tough & reliable diesel articulated boom lift
- Powerful 4 wheel drive for rough terrain
- Robust, rental tough design
- Simple to operate and maintain
- Ideal for both maintenance and construction applications

 **snorkel**  
[www.snorkellifts.com](http://www.snorkellifts.com)

# ARTICULATED BOOM LIFT

# AB60JRT

DIMENSIONS	AB60JRT
Max. working height	66 ft
Max. platform height	60 ft
Max. horizontal reach	43 ft 1 in
Platform size	8 ft x 3 ft
Overall width	7 ft 11.5 in
Overall length (A)	29 ft 2 in
Stowed height (B)	8 ft 3 in
Ground clearance	12 in



PERFORMANCE	
Platform capacity (SWL)	500 lbs
Max. drive height	60 ft
Max. drive speed (stowed)	3.2 mph
Max. drive speed (elevated)	0.6 mph
Jib length	5 ft 10 in
Jib working arc	75°
Platform rotation	180°
Raise/lower time	125/121 sec
Gradeability	20%
Inside turning radius	8 ft 6 in
Tires	15 in x 19.5 in foam filled
Controls	proportional joystick drive, lift & rotation
Drive system	4 wheel drive

POWER	
Power source	gas or diesel

WEIGHT	
Gross weight	24,800 lbs

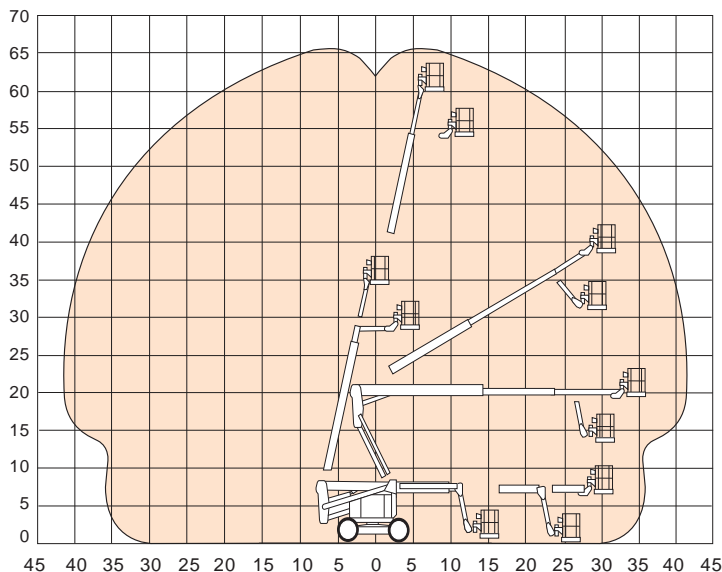
## STANDARD FEATURES

- 5 ft 10 in, 75° jib
- Hydraulic powered platform rotation
- 4 wheel drive
- Proportional control of drive, boom lift and rotation
- Foam filled lug tires
- Drive motion alarm
- Operator horn
- Flashing amber light
- ANSI compliant

## OPTIONS

- Hydraulic generator
- Airline to platform
- Swing gate
- Cold weather package
- Extreme cold weather package
- Light package
- Extreme environment package
- Aircraft package
- Tow package
- Glazier package

## WORKING ENVELOPE



**snorkel**

www.snorkellifts.com

P.O. Box 1160  
 St. Joseph, MO 64502-1160, USA  
 Tel: 1 (785) 989-3000  
 Toll-free: 1 (800) 255-0317  
 Sales Fax: 1 (785) 989-3070  
 Parts Fax: 1 (785) 989-3077

Specifications subject to change without notice. Photos and diagrams in this brochure are for promotional purposes only. Refer to appropriate Snorkel operators manual for detailed instructions on the proper use and maintenance.