

# T120/T125J

## TELESCOPIC BOOM LIFTS



- Reliable & robust diesel telescopic boom lifts
- Available with and without a jib boom
- Powerful 4 wheel drive and 4 wheel steer
- Simple to operate and maintain
- Ideal for construction applications

 **snorkel**  
[www.snorkellifts.com](http://www.snorkellifts.com)

# TELESCOPIC BOOM LIFTS

# T120/T125J

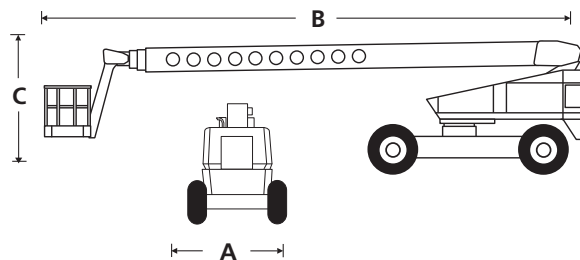
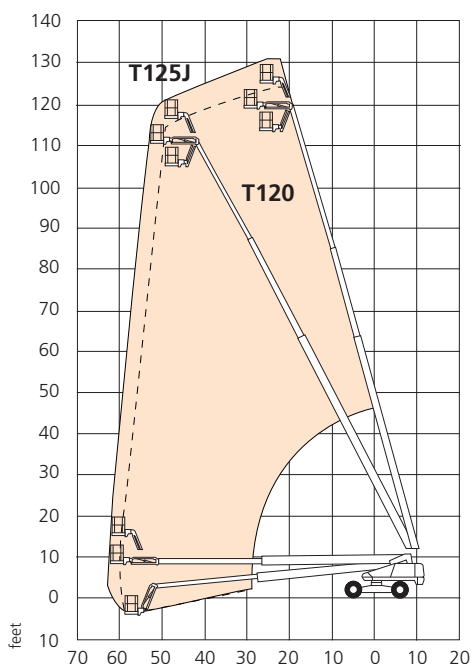
DIMENSIONS	T120	T125J
Max. working height	126 ft	131 ft
Max. platform height	120 ft	125 ft
Max. horizontal reach	62 ft	62 ft 11 in
Platform size	8 ft x 2ft 5 in	8 ft x 2ft 5 in
Overall width (A)	8 ft 6 in	8 ft 6 in
Operational width	12 ft 9 in	12 ft 9 in
Overall length (B)	42 ft 3 in	44 ft 9 in
Stowed height (C)	9 ft 10 in	10 ft 5 in
Ground clearance	13 in	13 in

PERFORMANCE	T120	T125J
Platform capacity (SWL)	500 lbs	600 lbs
Max. drive height	120 ft	125 ft 11 in
Max. drive speed (stowed)	2.9 mph	2.9 mph
Max. drive speed (elevated)	0.5 mph	0.5 mph
Jib length	n/a	5 ft
Jib working arc	n/a	140 °
Platform rotation	180 °	180 °
Superstructure rotation (continuous)	360 °	360 °
Raise/lower time	208/215 seconds	208/215 seconds
Gradeability	30 %	30 %
Inside turning radius	19 ft	19 ft
Tires	18 x 22.5 foam filled loader lug	
Controls	proportional joystick	
Drive system	4 wheel drive	

POWER	T120	T125J
Power source	Cummins 3.3 litre water cooled diesel 65hp	

WEIGHT	T120	T125J
Weight	39,500 lbs	41,887 lbs

## WORKING ENVELOPE



## STANDARD FEATURES

- 5 ft, 140 ° jib (T125J)
- Hydraulic powered platform rotation
- 4 wheel drive
- Proportional control of drive, boom lift and rotate
- Power line to platform
- Flashing amber light
- Horn
- Foam filled lug tires
- Driveable at full height
- Hydraulic extending rear axle
- Drive motion alarm
- Envelope management system
- ANSI compliant

## OPTIONS

- Special paint colors
- Hydraulic generator
- Cold weather package
- Airline to platform
- Extreme cold weather package
- GM engine
- Light package
- Tow package
- Glazier package
- Extreme environment package
- 12k generator package
- 12k generator/welder package
- Environmental green oil
- CSA compliant

**snorkel** [www.snorkellifts.com](http://www.snorkellifts.com)

P.O. Box 1160  
 St. Joseph, MO 64502-1160, USA  
 Tel: 1 (785) 989-3000  
 Toll-free: 1 (800) 255-0317  
 Sales Fax: 1 (785) 989-3070  
 Parts Fax: 1 (785) 989-3077

Specifications subject to change without notice. Photos and diagrams in this brochure are for promotional purposes only. Refer to appropriate Snorkel operators manual for detailed instructions on the proper use and maintenance.