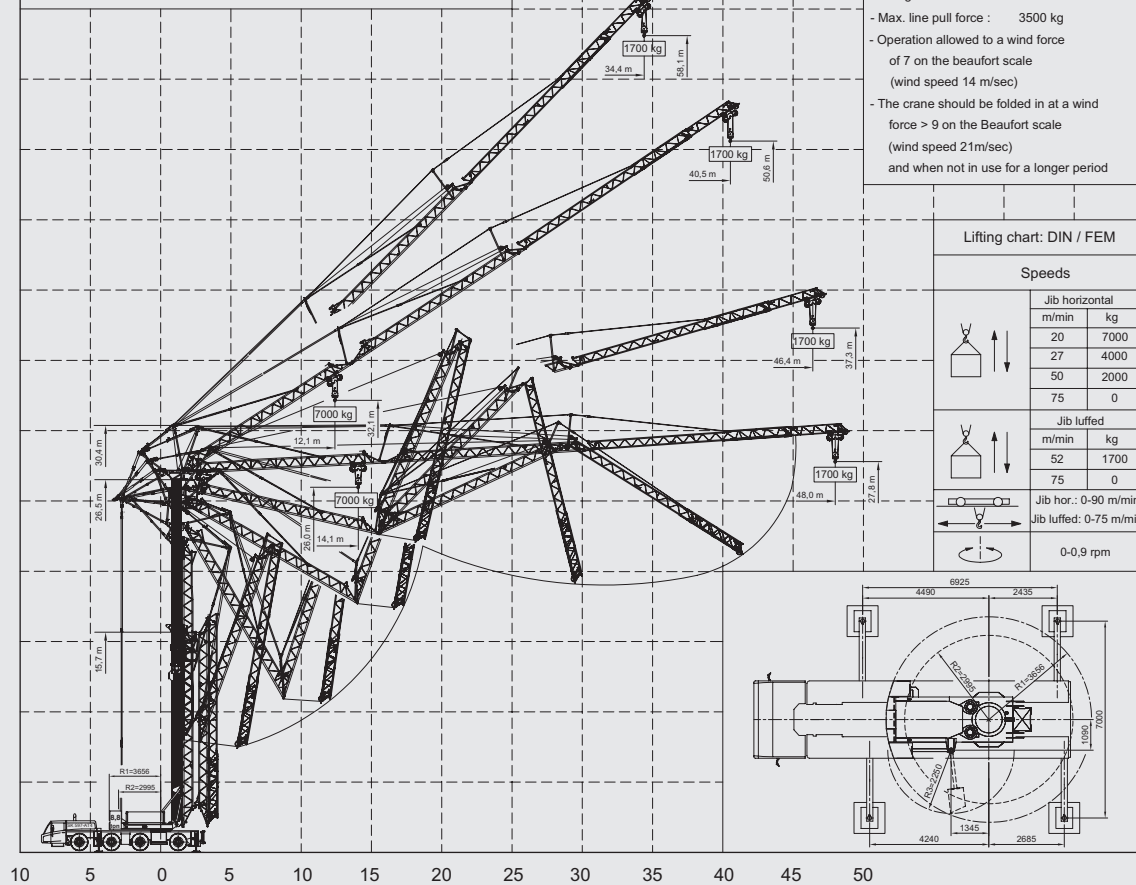


Max. outrigger loading : 360 kN  
 Outrigger foot : 750x600 mm  
 Pressure under foot : 0,8 N/mm<sup>2</sup>  
 Jib can be unfolded through 360°  
 Luffing the jib 30° can be controlled from the crane cab

**Information for lifting chart**  
 - Rated lifting capacity is net capacity without hook  
 - 360° continuous slewing  
 - Operating temperature range from -15° to 40° C.  
 - Max. line pull force : 3500 kg  
 - Operation allowed to a wind force of 7 on the Beaufort scale (wind speed 14 m/sec)  
 - The crane should be folded in at a wind force > 9 on the Beaufort scale (wind speed 21 m/sec) and when not in use for a longer period

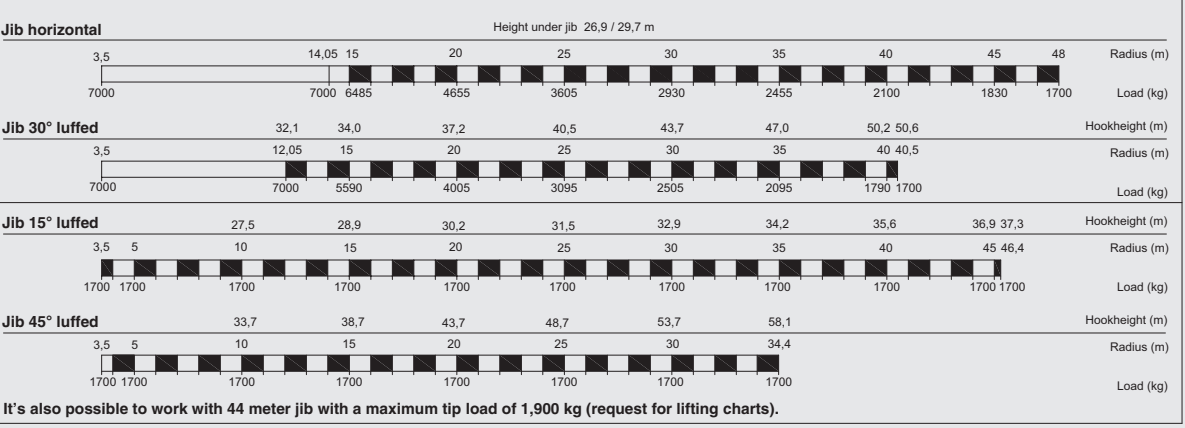


**Lifting chart: DIN / FEM**

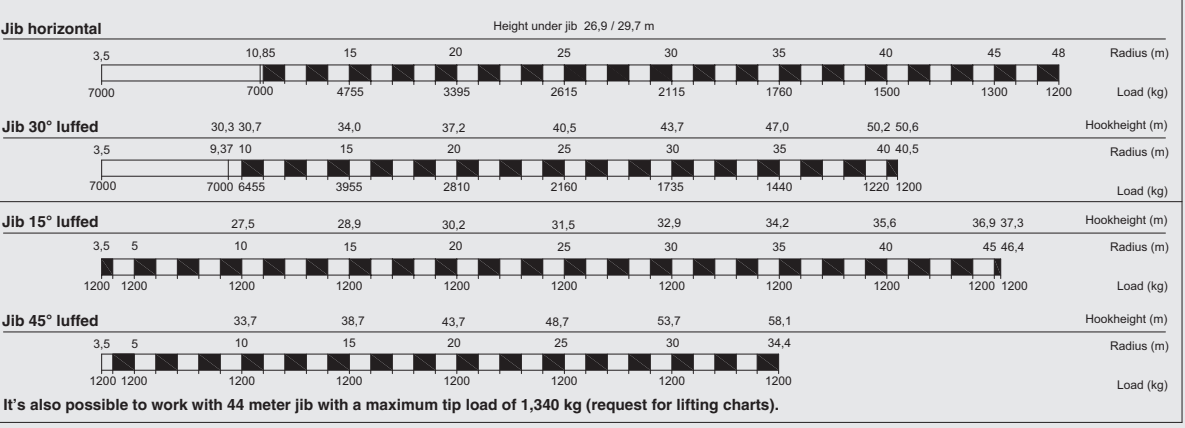
Speeds	
Jib horizontal	kg
20	7000
27	4000
50	2000
75	0
Jib luffed	
m/min	kg
52	1700
75	0

Jib hor.: 0-90 m/min  
 Jib luffed: 0-75 m/min  
 0-0,9 rpm

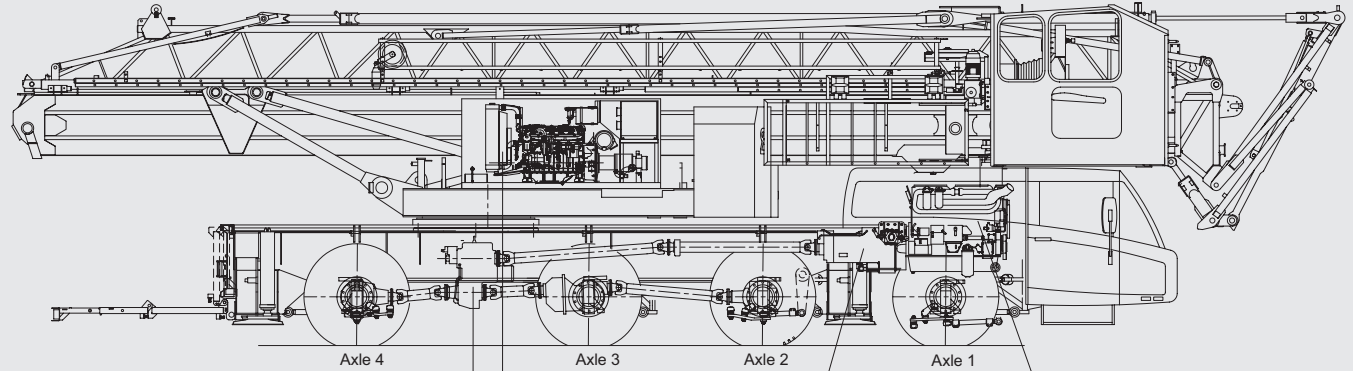
**Lifting chart Outrigger spread 6,925 m x 7,0 m**



**Lifting chart Outrigger spread 6,925 m x 5,85 m**



Changes subject to modifications



**Transfer box:**  
 STEYR VG2001/396  
 Road gear i=0,89  
 Off road gear i=1,54

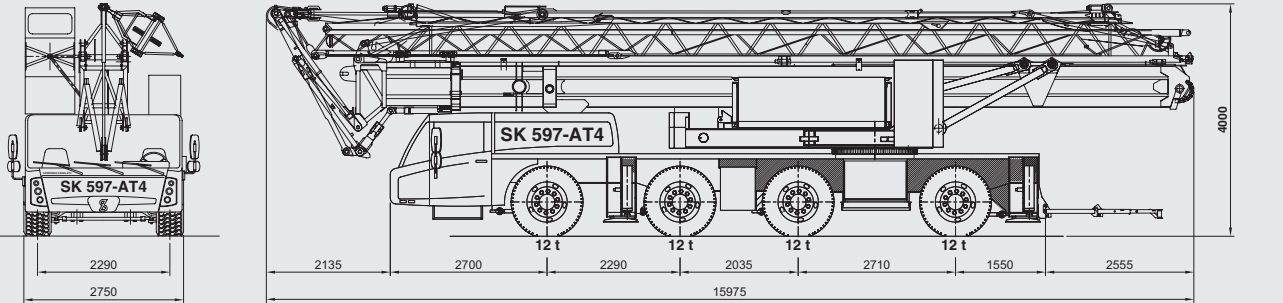
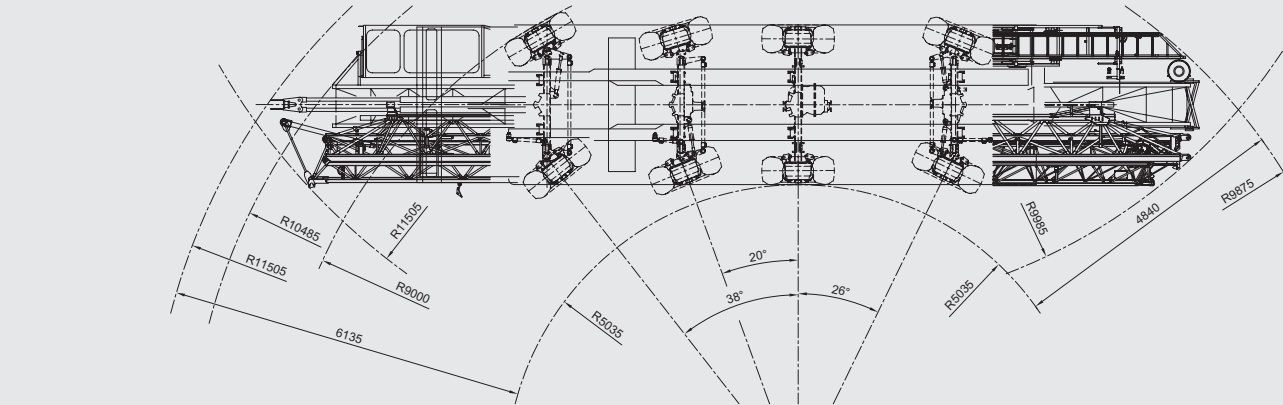
**Crane diesel engine:**  
 John Deere: 4045HFG82  
 Constant speed  
 Power: 103 kW (1500 rpm)  
 Torque: 656 Nm (1500 rpm)

**Gearbox:**  
 ZF 12AS2531 SO  
 Automatic  
 Dry plate clutch  
 + interarder

**Carrier diesel engine:**  
 Euro VI  
 DAF: MX11-291 (10,8 ltr)  
 Power: 291 kW (1700 rpm)  
 Torque: 1900 Nm (1000-1400 rpm)

Axle 1 : Steer axle  
 Axle 2 : Steer drive axle (end reduction i=7,29)  
 Axle 3 : Non steered drive axle (end reduction i=7,29)  
 Axle 4 : Steer drive axle (end reduction i=7,29)  
 Kessler-axes with disc brakes

Tyres : 445/75 R22,5  
 Suspension : Hydro-pneumatic on all axes  
 Stroke suspension cylinder : 247 mm  
 Max. speed carrier : 83 km/h  
 Min. speed carrier (engine at 1000 rpm) : 1,6 km/h  
 Overall weight : 48.000 kg.



48.000 kg overall weight



**SK 597-AT4**  
 48 meter radius / 7,000 kg max. / 1,700 kg max. tip load

**Lift to the max.**

Spierings Mobile Cranes B.V.  
 Merwedestraat 15  
 5347 KZ Oss - The Netherlands  
 PO Box 24, NL-5340 AA Oss

T +31(0) 412 69 77 77  
 F +31(0) 412 67 12 20  
 E sales@spieringscranes.com



# Your flexibility to the max

8



## Upper engine

With the newest emission regulations Spierings still chooses for two engines. The John Deere 4 Cylinder diesel engine (constant rpm) is mounted in the super structure. The engine and the hydraulic pumps are mounted in a high quality sound reducing cover.



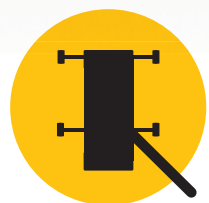
## Truck cabin

The Spierings Crane is equipped with the latest design of interior. The new cab design is ergonomic and gives the driver optimum comfort. The driver's seat is equipped with air suspension. Air-conditioning, navigation, radio, Bluetooth car kit and heated and adjustable mirrors are standard.



## One job, one man

One operator can easily erect and operate the crane. No additional ballast or jib sections are required. A Spierings crane can at all times be operated by one operator. The operator has a perfect view out of the crane cab and with the optional mounted trolley camera even in the most difficult situations.



## Truck

Specially designed truck chassis for optimum torsion rigidity. As a result of the special construction, the maximum lifting capacity can be reached with minimum ballast, thus making extra ballast unnecessary.



## Hydraulic motions

All crane motions are hydraulic proportional controlled. This makes the crane easy to operate and gives maximum precision and efficiency.



## Steel pads

The crane is optional equipped with 4 steel pads (2x0,9 meter), mounted at the rear of the carrier. An auxiliary crane arm is fit for placing the steel pads.



## Setup in minutes

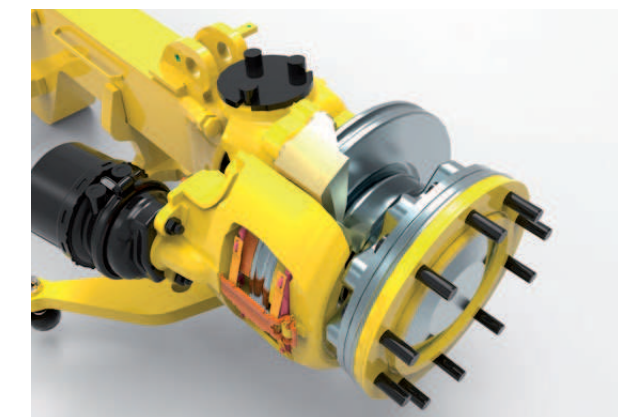
The fully automatic program to erect the Spierings Crane takes approx 8 minutes after the crane is set on its outrigger.



Hydraulic system for erecting and dismantling crane and crane motions.



Four floodlights are mounted in the jib and tower.



Disc brakes, interarder and exhaust brake are standard.



Crane Cabin equipped with trolley camera display and touch screen.



The new truck cab interior design is fully equipped and gives the driver optimum comfort.