



**SPIERINGS
CRANES**

Mark: **SPIERINGS** Type: **SK488-AT7**

Crane identification

85 % chart

Max. radius with max. load: **48 ft**

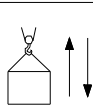
Max. jib length: **131 ft**

Serial number:

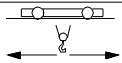
Year of construction:

Speeds

Jib horizontal / jib 30° luffed



ft/min	lbs
16	17600
30	8820
43	4400
65	0



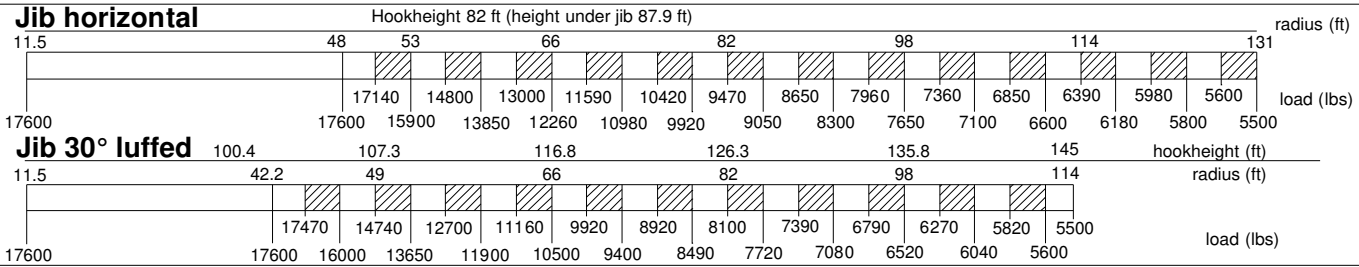
0 - 65 ft/min



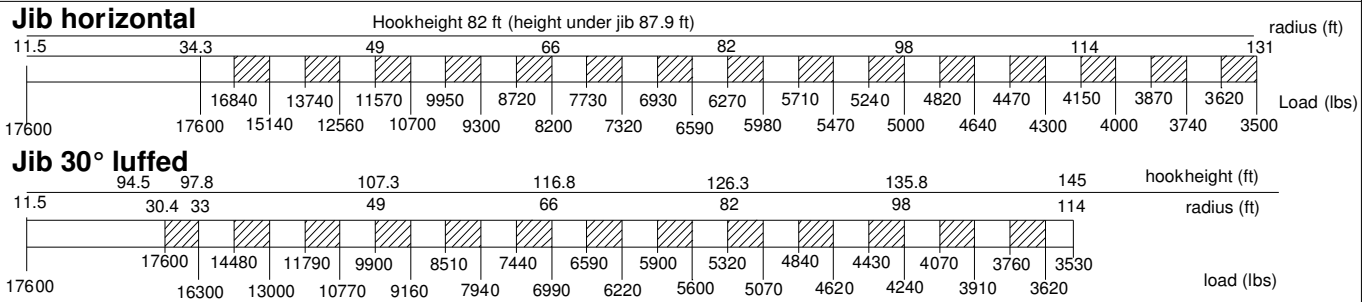
0-0,3 rpm

All motions with hydraulic proportional controls
 Luffing the jib 30° can be controlled from crane cab or via remote control
 Driving with erected tower and jib, only with the jib horizontal and positioned over the front carriage, platform locked to the carrier and the outriggers fully extended (max. inclination 2°)
 Rated lifting capacity is net capacity
 Crane equipped with full counterweight: 19180 lb
 360° continuous slewing, with outriggers out and down
 2 Outriggers positions: 22.64 x 22.44 ft
 22.64 x 16.9 ft
 Operation allowed up to a windforce of 3 on the Beaufortscale (3.4 - 5.4 ft/sec).
 Sail area of the load max. 11.8 sq.ft / US ton at a windforce of 3 on the Beaufortscale (3.4 - 5.4 ft/sec).
 Operating temperature range from -35° to 40° C.
 In all cases 2 parts of line
 Max. line pull force 8820 lbs
 The crane should be folded in at a windforce >9 (69ft/sec) or when not in use for a longer period

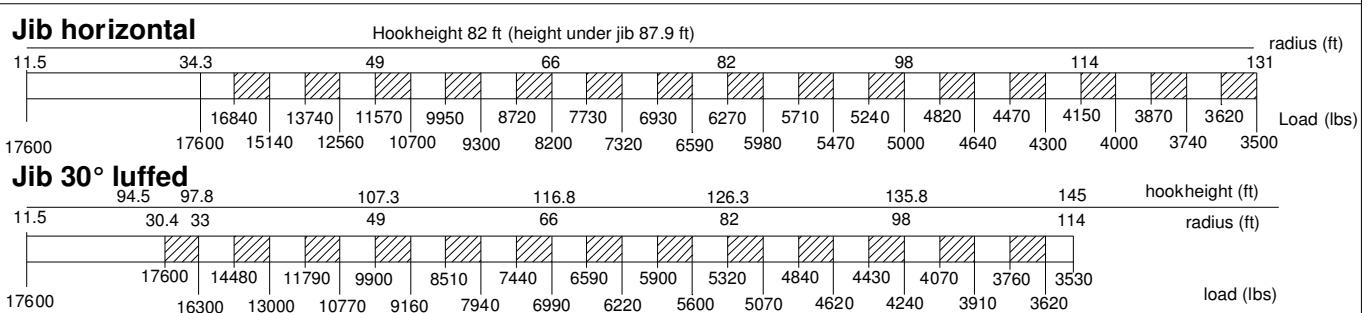
LIFTING CHART Outrigger spread 22.64 ft x 22.44 ft Operating temperature -20° to 40°

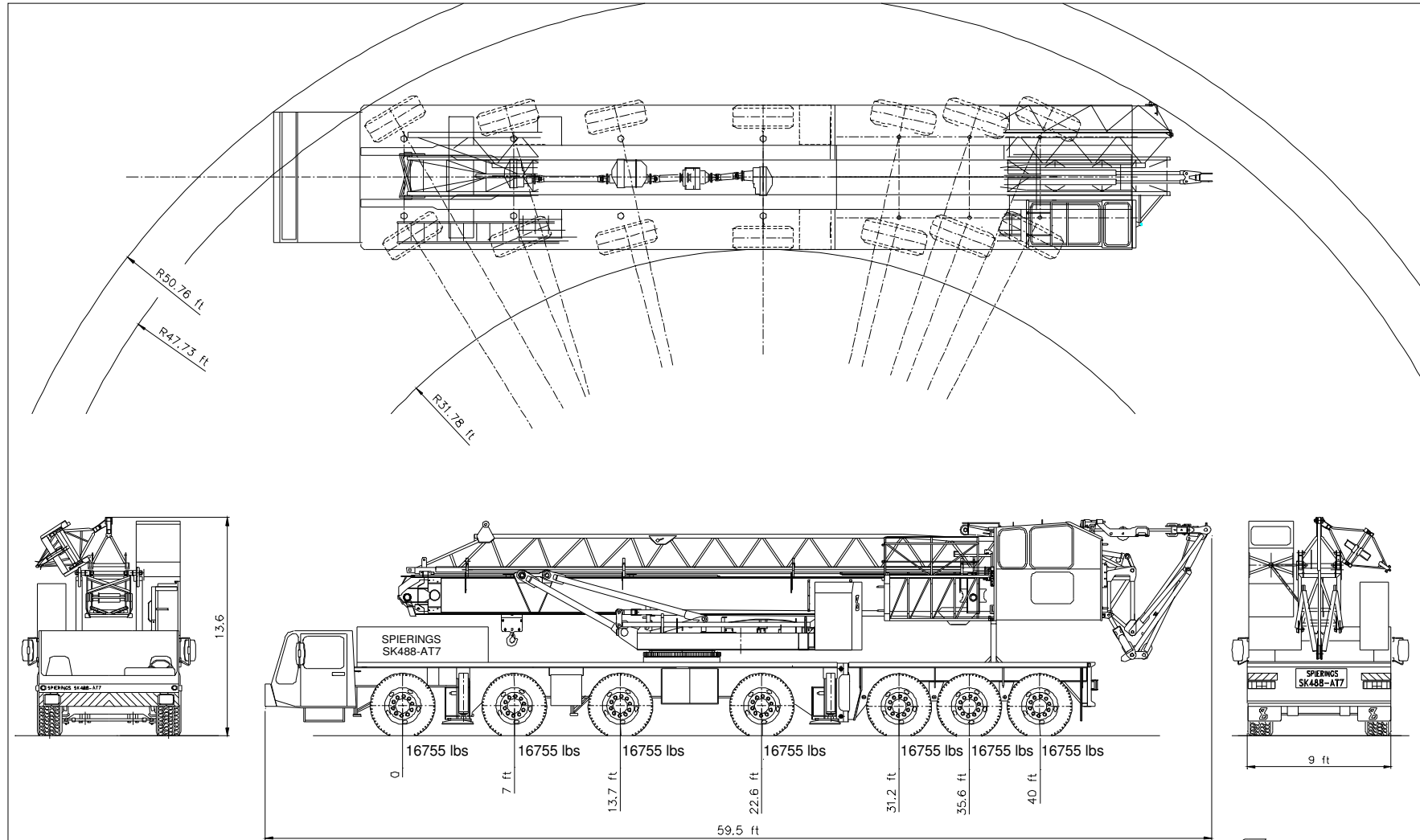


LIFTING CHART Outrigger spread 22.64 ft x 22.44 ft Operating temperature -35° to -20°



LIFTING CHART Outrigger spread 22.64 ft x 16.9 ft Operating temperature -20° to 40°



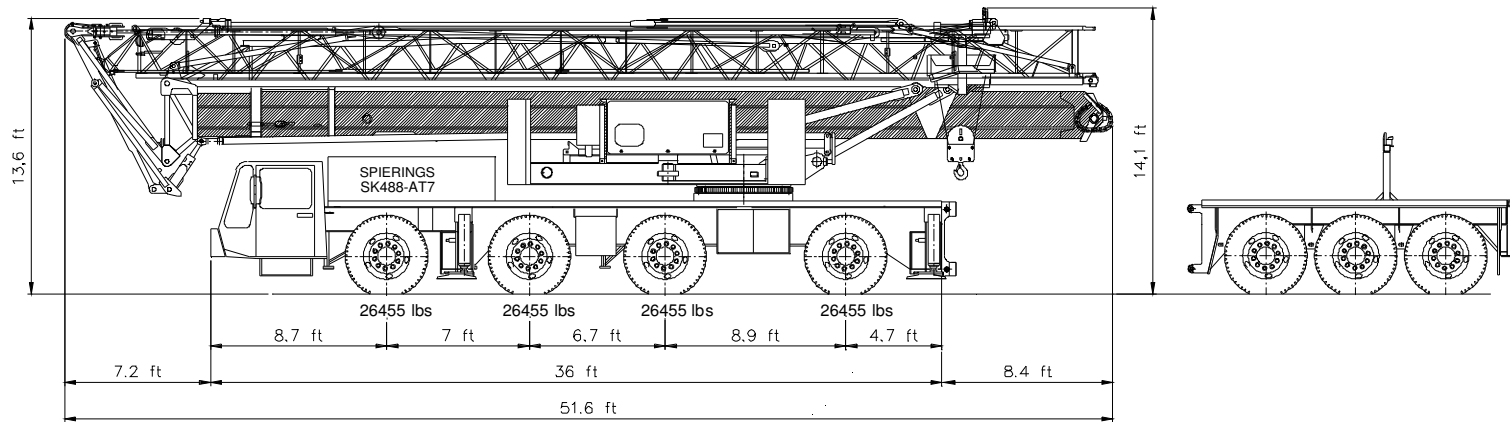
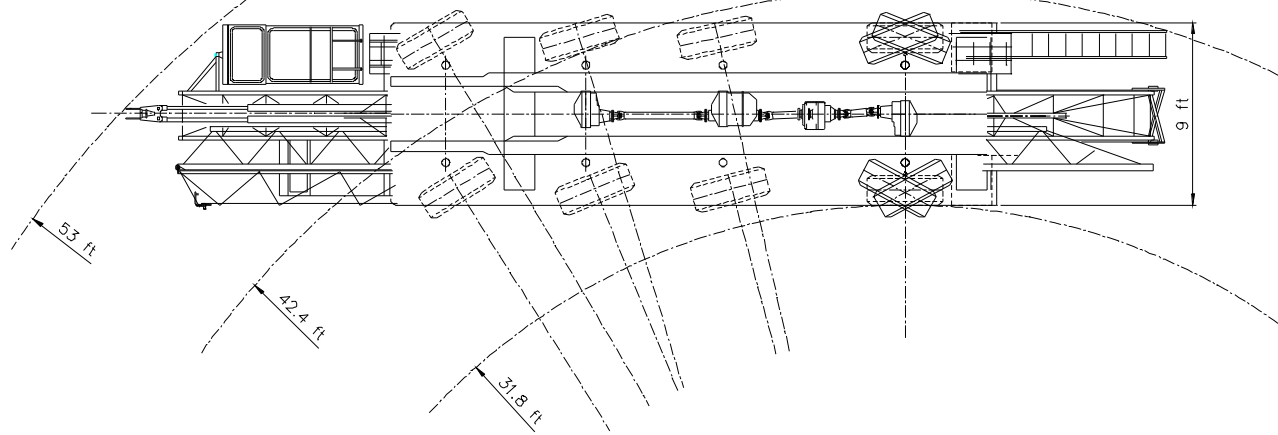


Max. axle load; 16755 lbs
 Total weight: 117285 lbs

SPIERINGS HYDRAULIC FOLDING CRANE SK 488 - AT7

 **SPIERINGS
 CRANES Ltd.**
 Box 59 Site 9 RR2
 Stony Plain AB
 Canada T7Z 1X2
 Phone 1 780 963-3929

OFF THE ROAD

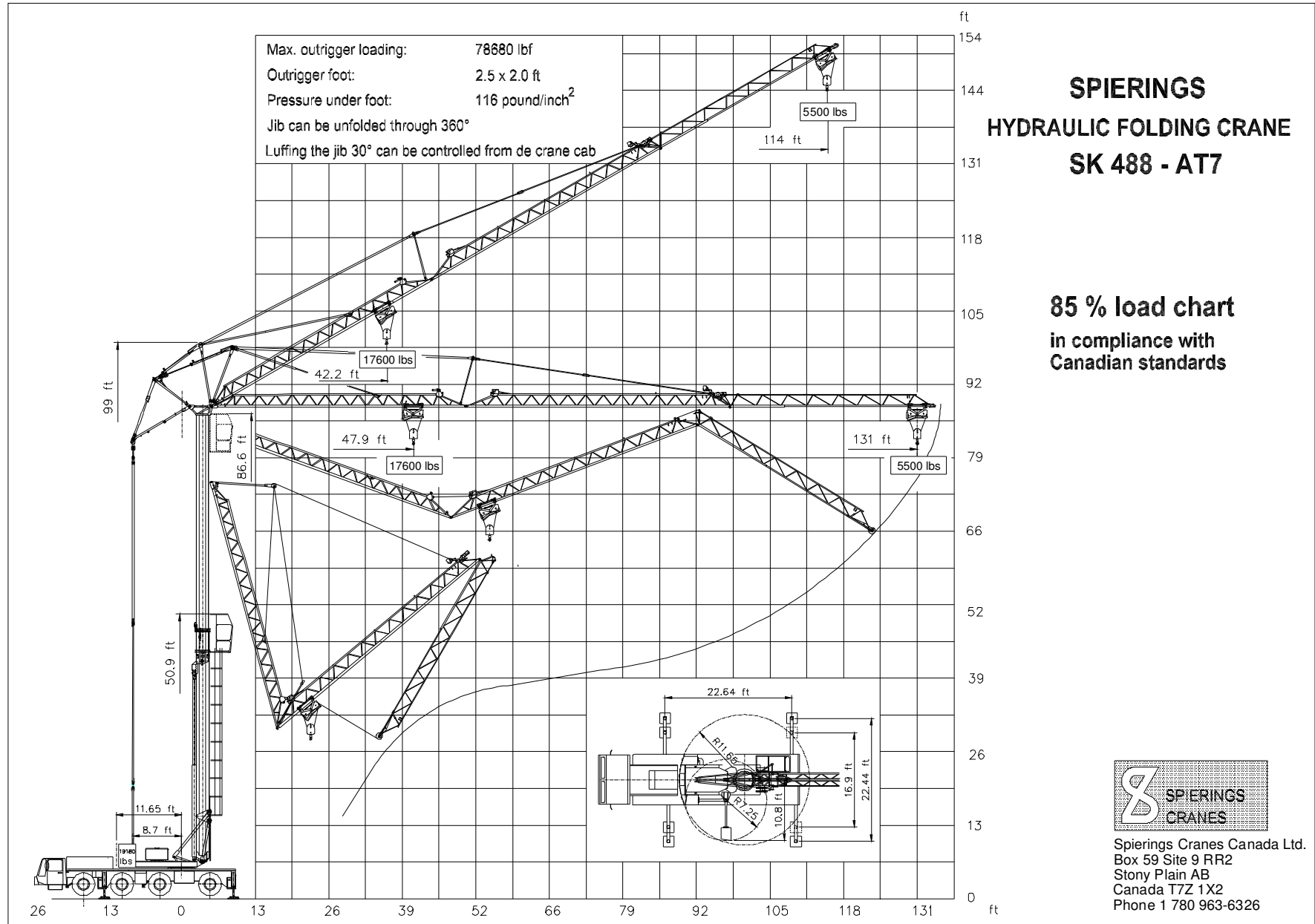


SPIERINGS HYDRAULIC FOLDING CRANE SK 488 - AT7

Max. axle load: 26455 lbs

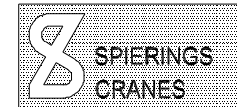
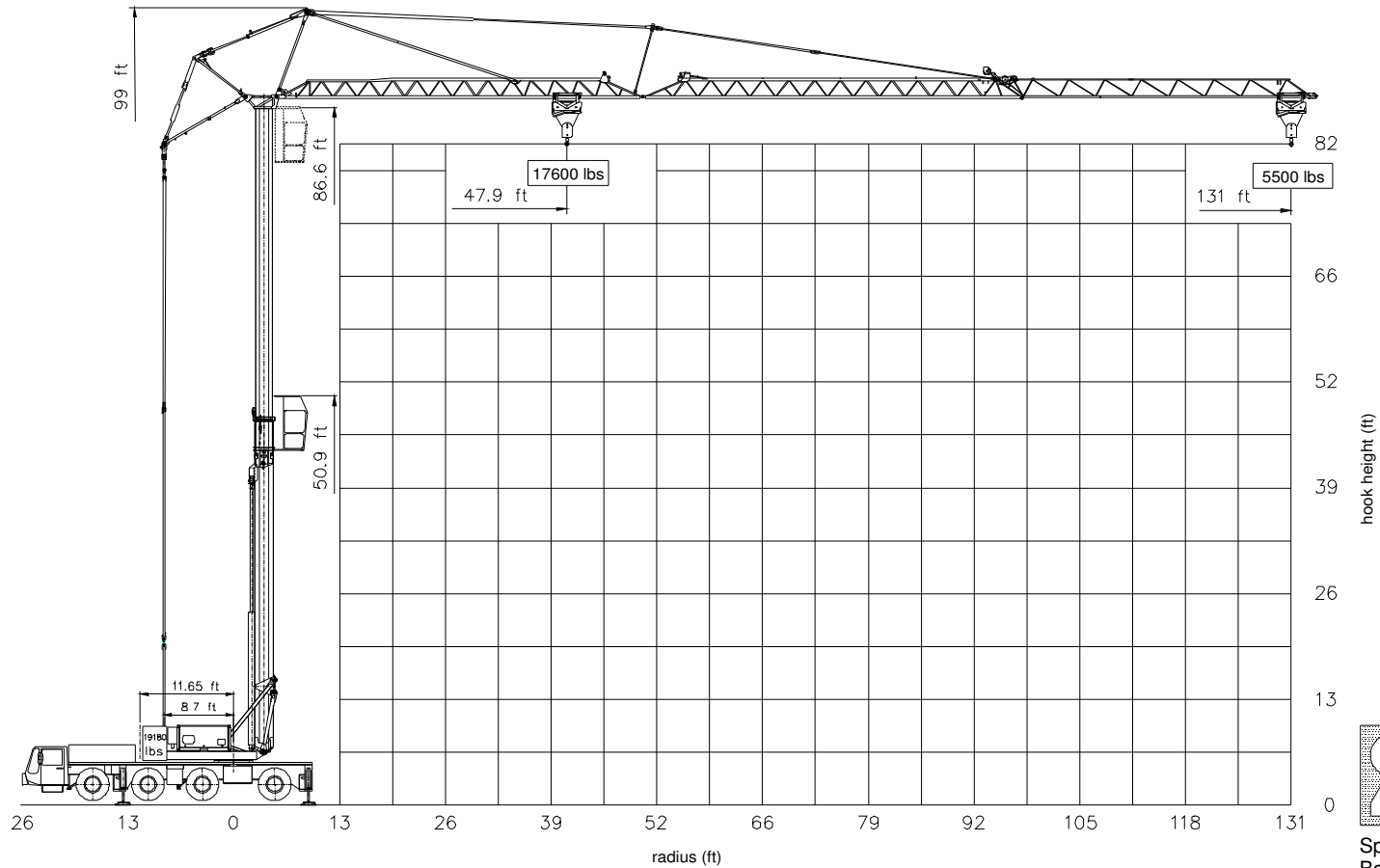
Total weight: 105820 lbs


**SPIERINGS
CRANES Ltd.**
 Box 59 Site 9 RR2
 Stony Plain AB
 Canada T7Z 1X2
 Phone 1 780 963-6326



**SPIERINGS
HYDRAULIC FOLDING CRANE
SK 488 - AT7**

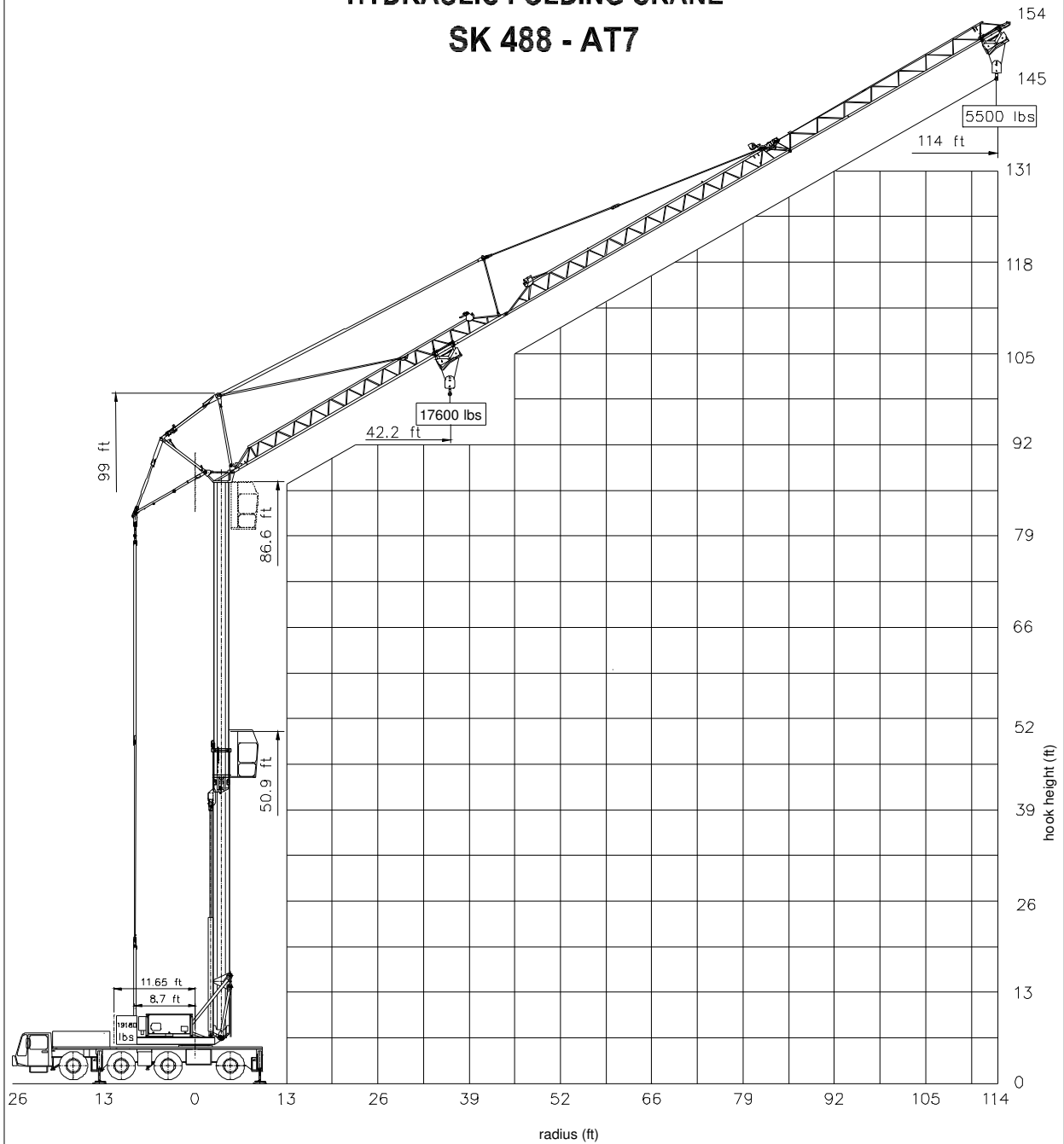
85 % load chart
in compliance with
Canadian standards



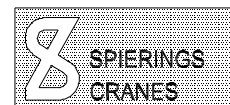
Spierings Cranes Canada Ltd.
Box 59 Site 9 RR2
Stony Plain AB
Canada T7Z 1X2
Phone 1 780 963-6326

Changes subject to modifications

SPIERINGS HYDRAULIC FOLDING CRANE SK 488 - AT7

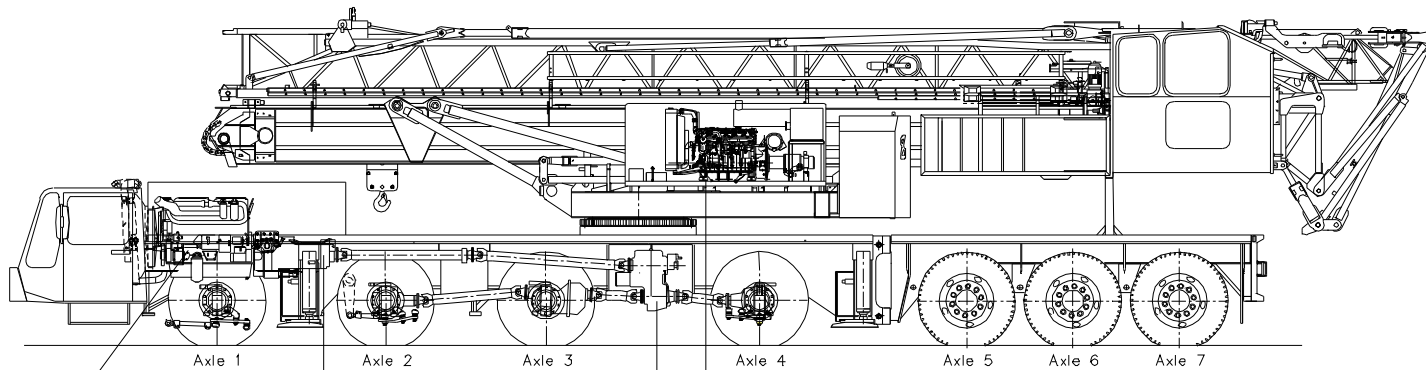


85 % load chart
in compliance with
Canadian standards



Spierings Cranes Canada Ltd.
Box 59 Site 9 RR2
Stony Plain AB
Canada T7Z 1X2
Phone 1 780 963-6326

Changes subject to modifications



Carrier diesel engine:
Euro III
DAF XE 315C (12,6 ltr)
Power: 315 kW (1900 rpm)
Torque: 1950 Nm (1000 - 1500 rpm)

Gearbox:
ZF 16S151
Manually operated with
air power assistance
+ dry plate clutch

Transferbox:
STEYR VG1600/396 with PTO
Road gear: $i=0,89$
Off road gear: $i=1,54$

Crane diesel engine
DETROIT VM D706 IE2
Power: 96 kW (2600 rpm)
Torque: 480 Nm (1300 rpm)

Axle 1 : steer axle
Axle 2 : steer drive axle
Axle 3 : steer drive axle
Axle 4 : steer drive axle
Axle 5 : steer axle
Axle 6 : steer axle
Axle 7 : steer axle

Suspension: hydro-pneumatic on all axles; stroke cyl. : 9.7 inch

Tyres : 445/75 R22,5
Max. speed carrier : 52 m/h
Min. speed carrier (engine at 1000 rpm) : 1 m/h
Overall weight : 117285 lbs

DRIVE TRAIN SPIERINGS HYDRAULIC FOLDING CRANE

SK 488 - AT7



Spierings Cranes Canada Ltd.
Box 59 Site 9 RR2
Stony Plain AB
Canada T7Z 1X2
Phone 1 780 963-6326

Changes subject to modifications