

GR-500EXS



Crane capacity

50,000 kg at 2.5 m

4-section long boom

10.2 m–33.0 m

2-staged jib

8.0 m/12.7 m

Maximum lifting height

33.5 m (Boom)

45.9 m (Jib)

Maximum load radius

30.5 m (Boom)

40.0 m (Jib)

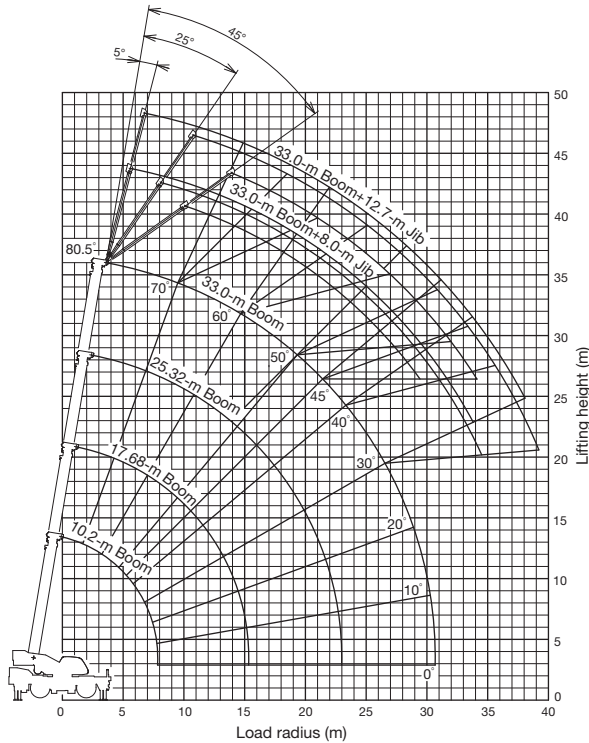
MODEL: GR-500EXS

SPECIFICATIONS

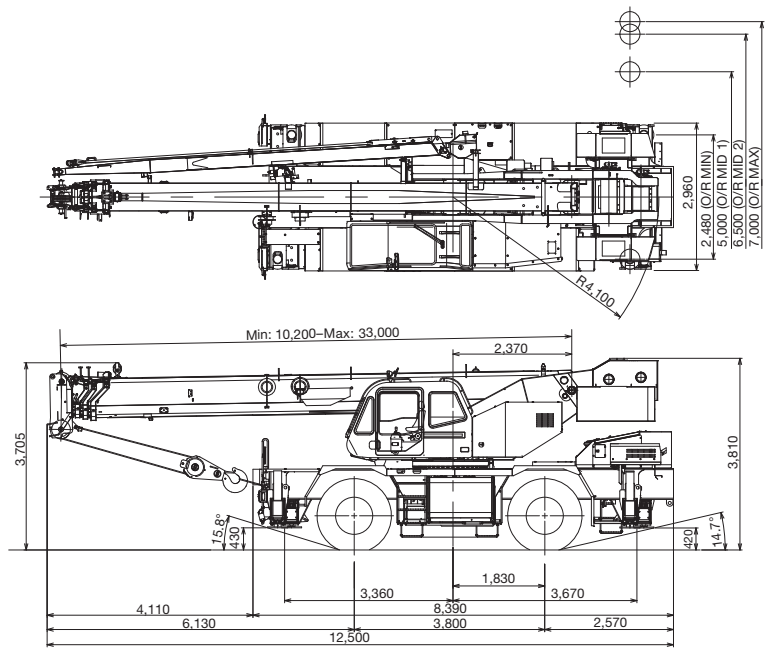
MAXIMUM CAPACITY	50,000 kg at 2.5 m
PERFORMANCE	
Max. traveling speed	44 km/h
Gradeability (tan θ)	92% (at stall), 30%*
	* Machine should be operated within limit of engine crackcase design. (17: Mitsubishi 6M60-TL)
WEIGHT	
Gross vehicle mass	33,540 kg (incl. 50 ton hook block)
-front axle	15,550 kg
-rear axle	17,990 kg
MIN. TURNING RADIUS	10.3 m (2-wheel steering), 6.0 m (4-wheel steering) (at center of extreme outer tire)
BOOM	4-section full power synchronized telescoping boom.
Fully retracted length	10.2 m
Fully extended length	33.0 m
Extension speed	22.8 m in 88 s
Angle	-1°-80.5°
Elevation speed	20° to 60° in 30 s
JIB	2-staged jib with triple offset (tilt type). Single sheave at jib head.
Offset	5°, 25°, 45°
Length	8.0 m and 12.7 m
MAIN WINCH	Variable speed type with grooved drum driven by hydraulic axial piston motor through speed reducer.
Single line pull	44.1 kN (4,500 kgf)
Single line speed	132 m/min. (at 4th layer)
Wire rope	16 mm x 182 m (Diameter x length)
AUXILIARY WINCH	Variable speed type with grooved drum driven by hydraulic axial piston motor through speed reducer.
Single line pull	44.1 kN (4,500 kgf)
Single line speed	124 m/min. (at 3rd layer)
Wire rope	16 mm x 100 m (Diameter x length)
SLEWING	
Slewing speed	2.7 min ⁻¹ {rpm}
Tail slewing radius	4,100 mm
HYDRAULIC SYSTEM	Pumps... 2 variable piston pumps for crane functions. Tandem gear pump for steering, slewing and equipment. Control valves... Multiple valves actuated by pilot pressure with integral pressure relief valves. Reservoir... 690 liters capacity. External sight level gauge. Oil Cooler... Air cooled fan type.

TADANO Automatic Moment Limiter (Model: AML-C)	Following information is displayed. • Control lever lockout function with audible and visual pre-warning • Number of parts of line • Boom position indicator • Outrigger state indicator • Slewing angle • Boom angle / boom length / jib offset angle / jib length / load radius / rated lifting capacities / actual loads read out • Potential lifting height • Ratio of actual load moment to rated load moment indication • Permissible load • Automatic speed reduction and slow stop function for slewing • Working condition register switch • Load radius / boom angle / tip height / slewing range preset function • External warning lamp • Tare function • Main hydraulic oil pressure • Fuel consumption monitor • Main winch / auxiliary winch select • Drum rotation indicator (audible and visible type) main and auxiliary winch • On-rubber indicator
OUTRIGGERS	4 hydraulic, beam and jack outriggers. Vertical jack cylinders equipped with integral holding valve. Each outrigger beam and jack is controlled independently from cab.
Extension width	Max. ... 7,000 mm, Mid. ... 6,500 mm & 5,000 mm Min. ... 2,480 mm, Float size (Diameter)... 400 mm
CARRIER	Rear engine, left-hand drive, driving axle 2-way selected type by manual switch. 4 x 2 front drive, 4 x 4 front and rear drive
ENGINE	Model..... Mitsubishi 6M60-TL Type..... 4-cycle, turbo charged and after cooled. Piston displacement...7.54 liters Bore x stroke...118 mm x 115 mm Max. output... 200 kW at 2,600 min ⁻¹ {rpm} Max. torque... 785 N·m at 1,400 min ⁻¹ {rpm}
TRANSMISSION	Electronically controlled full automatic transmission.
STEERING	Hydraulic power steering. 3 steering modes available: 2-wheel front, 4-wheel coordinated, 4-wheel crab
SUSPENSION	Front..... Rigid mounted to frame. Rear..... Semi-elliptic leaf springs.
TIRES	445/95R25, Single x 4
FUEL TANK CAPACITY	300 liters

WORKING RANGE



DIMENSIONS



Dimensions are with boom angle at -1°.

Note: Some specifications are subject to change.



Lifting your dreams

TADANO LTD. (International Sales Division)
4-12, Kamezawa 2-chome, Sumida-ku Tokyo 130-0014, Japan
Phone: +81-3-3621-7750 Fax: +81-3-3621-7785
<http://www.tadano.com/> E-mail: info@tadano.com

