

GTC-800

Crane capacity

80t

5-section boom

43.0m

Jib options

2.5m heavy lift jib

10.1m / 17.7m bi-fold jib

Maximum lifting height

42.1m (boom)

60.4m (jib)



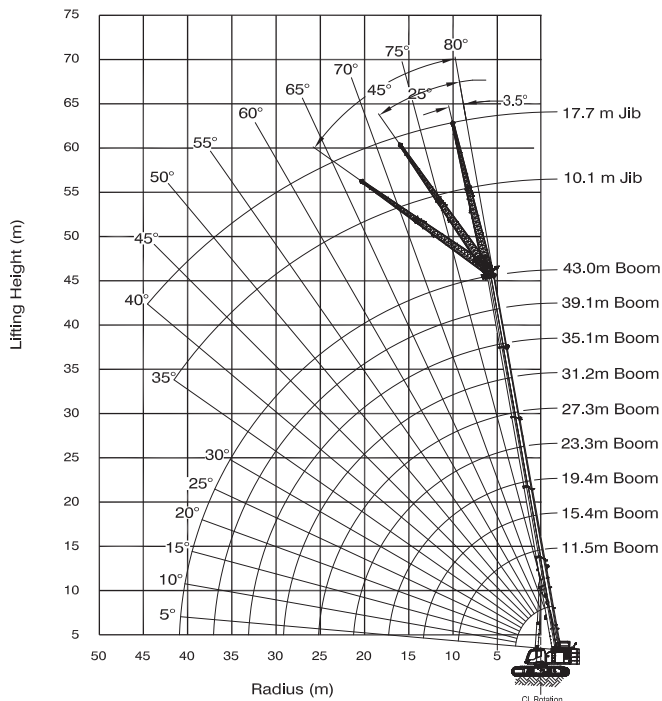
CE

MODEL: GTC-800

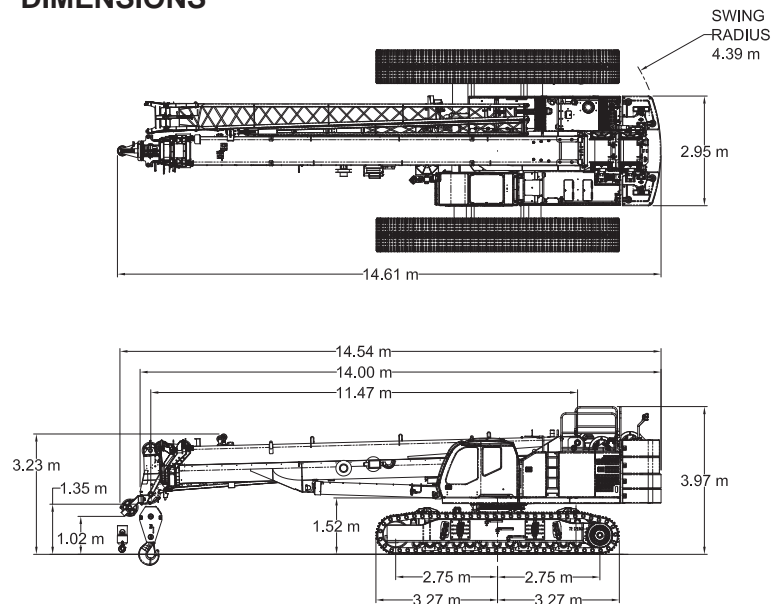
CRANE CAPACITY	80t at 3.0 m
BOOM	5-section full power telescoping boom with 2 extension modes.
Retracted Length:	11.5 m
Extended Length:	43.0 m
Max. Lifting Height:	42.1 m
Extension Time:	138 s
Elevating Angles:	-1.5° to 80°
Elevating Time:	89 s
Heavy lift jib	• Total Length: 2.5 m • Offset Angles: 3.5° & 30° • Max. Lifting Height: 45.3 m
Main Jib	• Total Length: 10.1 m • Offset Angles: 3.5°, 25° & 45° • Max. Lifting Height: 52.9 m
Fly Jib	• Total Length: 17.7 m • Offset Angles: 3.5°, 25° & 45° • Max. Lifting Height: 60.4 m
Gross Vehicle Mass	81,724 kg
Counterweight	• Upper = 20,411 kg • Carbody = 9,070 kg
Travel Speed	1.2 km/hr / 3.6 km/hr
Gradeability	78%
Swing Speed	2.0 RPM
Tail Swing Radius	4.39 m
House Lock Systems	• 4-position house lock (boom over front, rear or either side). Actuated from the operator's cab. • Optional 360 degree house lock. Actuated from the operator's cab.
Swing Park Brake	Spring applied failsafe brake with hydraulic release that is controlled from the operators cab
Swing Service Brake	Hydraulically applied, controlled through foot actuated pedal
Winches	Planetary geared two-speed winch includes a hydraulic motor, multi-disc internal brake and counterbalance valve. Drum rotation indicator, cable follower and grooved drum is included
Main Winch	• Rope Diameter and Length: 19mm x 211m • Single line pull: 88.2 kN (first layer) • Single line speed: 112.2 m/min (4th layer)
Auxiliary Winch	• Rope Diameter and Length: 19mm X 144.8m • Single line pull: 88.2 kN (first layer) • Single line speed: 112.2 m/min (4th layer)

Load Moment Indicator	<ul style="list-style-type: none"> TADANO AML-C Rated Capacity Limiter and Anti-Two Block system Control function shutdown. Audible and visual warnings LCD screen provides a continuous display of working boom length, boom angle, working load radius, tip height, swing position, parts-of-line (operator set), machine track configuration, relative load moment, maximum permissible load and actual load. Operator configurable working range limits with automatic soft stop.
Telematics	Machine data logging and monitoring system with HELLO-NET via Internet.
Diesel Engine	<ul style="list-style-type: none"> Make/ Model: Cummins QSB6.7 Type: 6 Cylinder, Water cooled, 4 Cycle Aspiration: Turbocharged and Aftercooled Max. Output: 231 kW @ 2300 RPM Max Torque: 1,044 Nm @ 1500 RPM Piston Disp: 6.7 L Emission Cert: U.S. EPA Tier 4f, Euromot Stage IV Alternator: 70 amp <p>Optional Emissions Certification:</p> <ul style="list-style-type: none"> Make/ Model: Cummins QSB 6.7 Emission Cert: U.S. EPA Tier 3, Euromot Stage IIIA Max. Output: 194 kW (260 hp) @ 2200 RPM Max Torque: 987 Nm (728 Lb-ft) @ 1500 RPM
Electrical System	24 VDC
Fuel Capacity	321 liter
Hydraulic System	<ul style="list-style-type: none"> Hydraulic Pumps: Two high pressure, variable axial piston pumps with load sense and power limiting control for crane functions. One axial piston pump for swing function. One gear pump for cooling loop. Directional Valves: Multiple pressure and flow compensated valves with integrated relief valves controlled by electrical signals. Pump output: 582 l/min @ 2200 RPM engine speed. 345 bar maximum pressure Reservoir 861 liter capacity, filler breather cap, sight gauge, cleanout, and sump drain. Filtration: Three 5 micron, full flow tank mounted return filters with electrical clogging indicator. 2 micron pilot oil in-line pressure filter
Optional Equipment	<ul style="list-style-type: none"> 800mm steel flat track shoes Work Platform: Model WP750 – 0.9m x 1.8m, all steel, welded, two person platform with maximum capacity of 340 kg. Cold Weather Packages: Cold weather options are available for operation to -40°C Controlled free fall winches Hydraulic tool Circuit Radio remote control Auger Package - mounts to boom second stage for variable radius operation

WORKING RANGE



DIMENSIONS



Specifications are subject to change without prior notice.



TADANO MANTIS Corporation

1705 Columbia Avenue Franklin, Tennessee 37064, U.S.A.
Phone: +1-800-272-3325 Fax: +1-615-790-6803
<http://www.mantiscranes.com/> E-mail: sales@mantiscranes.com

TADANO LTD. (International Division)

4-12, Kamezawa 2-chome, Sumida-ku Tokyo 130-0014, Japan
Phone: 81-3-3621-7750 Fax: 81-3-3621-7785
<http://www.tadano.com> E-mail: info@tadano.com

TMC-DI-734-12.03/16