

GTC-800

Crane capacity
88 US ton (80t)

5-section boom
141.1 ft (43.0m)

Jib options

8.2 ft (2.5m) heavy lift jib

33.1 ft (10.1m) / 58.1 ft (17.7m) bi-fold jib

Maximum lifting height

138 ft (42.1m) (boom)

198 ft (60.4m) (jib)

OPTI-WIDTH™

OPTIMAL lifting performance at any
track WIDTH

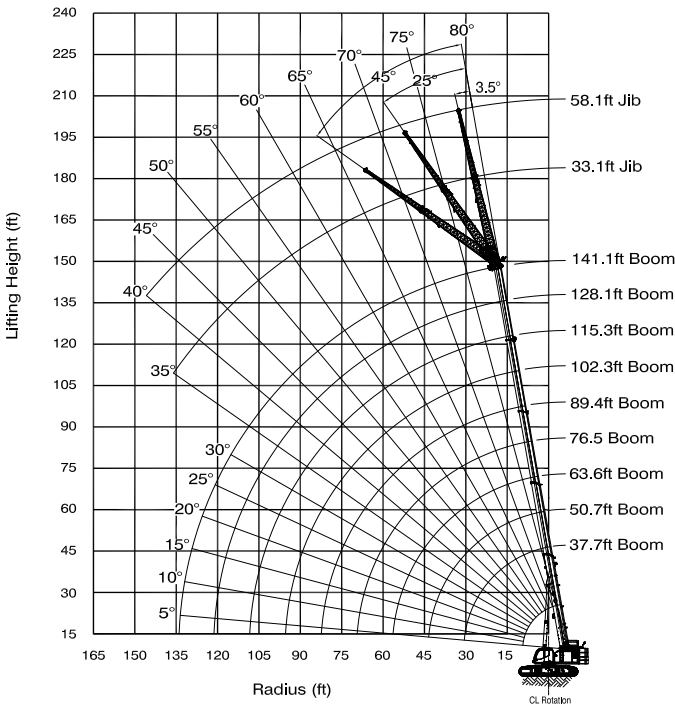


MODEL: GTC-800

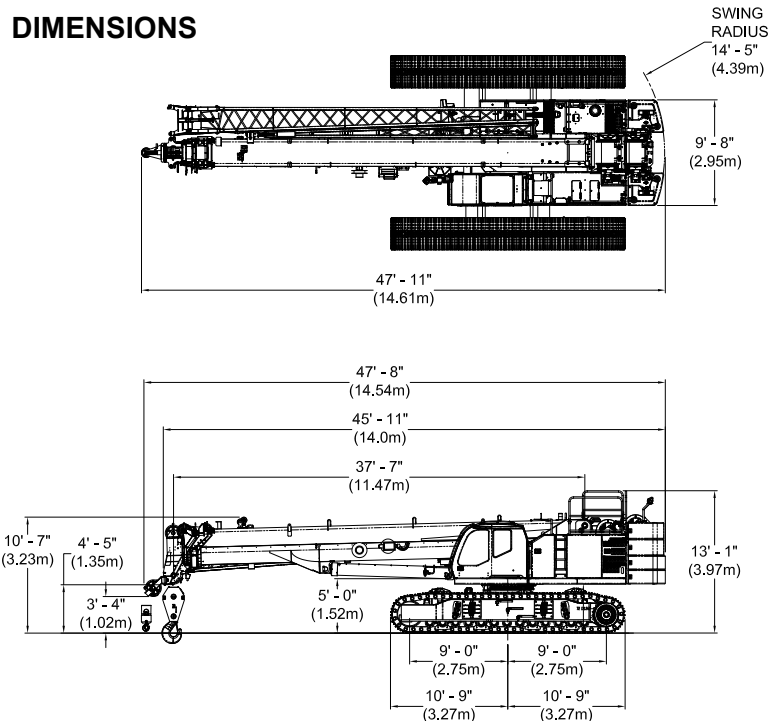
CRANE CAPACITY	88 ton at 10 feet (80t at 3.0m)
BOOM	5-section full power telescoping boom with 2 extension modes.
Retracted Length:	37.7 feet (11.5m)
Extended Length:	141.1 feet (43.0 m)
Max. Lifting Height:	138 feet (42.1 m)
Extension Time:	161 s
Elevating Angles:	-1.5° to 81.5°
Elevating Time:	87 s
Heavy lift jib	• Total Length: 8.2 ft (2.5 m) • Offset Angles: 3.5° & 30° • Max. Lifting Height: 148.6 ft (45.3 m)
Main Jib	• Total Length: 33.1 ft (10.1m) • Offset Angles: 3.5°, 25° & 45° • Max. Lifting Height: 173.6 feet (52.9m)
Fly Jib	• Total Length: 58.1 ft (17.7 m) • Offset Angles: 3.5°, 25° & 45° • Max. Lifting Height: 198 ft (60.4 m)
Gross Vehicle Mass	180,171 lb (81,724 kg)
Counterweight	• Upper = 45,000 lb (20,411 kg) • Carbody = 20,000 lb (9,070 kg)
Travel Speed	0.6 mph (1.0 km/hr)/ 2.1 mph (3.4 km/hr)
Gradeability	78%
Swing Speed	2.0 RPM
Tail Swing Radius	14' - 5" (4.39m)
House Lock Systems	• 4-position house lock (boom over front, rear or either side). Actuated from the operator's cab. • Optional 360 degree house lock. Actuated from the operator's cab.
Swing Park Brake	Spring applied failsafe brake with hydraulic release that is controlled from the operators cab
Swing Service Brake	Hydraulically applied, controlled through foot actuated pedal
Winches	Planetary geared two-speed winch includes a hydraulic motor, multi-disc internal brake and counterbalance valve. Drum rotation indicator, cable follower and grooved drum is included
Main Winch	• Rope Diameter and Length: 3/4 in x 695 ft (19mm x 211m) • Single line pull: 19,830 lb (88.2 kN) (first layer) • Single line speed: 368 ft/min (112.2 m/min) (4th layer)
Auxiliary Winch	• Rope Diameter and Length: 3/4 in x 480 ft (19mm x 146m) • Single line pull: 19,830 lb (88.2 kN) (first layer) • Single line speed: 368ft/min (112.2 m/min) (4th layer)

Load Moment Indicator	• TADANO AML-C Rated Capacity Limiter and Anti-Two Block system • OPTI-WIDTH™ - OPTIMAL lifting performance at any track WIDTH • Control function shutdown. Audible and visual warnings • LCD screen provides a continuous display of working boom length, boom angle, working load radius, tip height, swing position, parts-of-line (operator set), machine track configuration, relative load moment, maximum permissible load and actual load. • Operator configurable working range limits with automatic soft stop.
Telematics	Machine data logging and monitoring system with HELLO-NET via Internet.
Diesel Engine	• Make/ Model: Cummins QSB6.7 • Type: 6 Cylinder, Water cooled, 4 Cycle • Aspiration: Turbocharged and Aftercooled • Max. Output: 310 hp (231 kW) @ 2200 RPM • Max Torque: 770 lb-ft (1,044 Nm) @ 1500 RPM • Piston Disp: 6.7 L • Emission Cert: U.S. EPA Tier 4f, Euromot Stage IV • Alternator: 70 amp
Electrical System	24 VDC
Fuel Capacity	85 gallon (321 liter)
Hydraulic System	• Hydraulic Pumps: Two high pressure, variable axial piston pumps with load sense and power limiting control for crane functions. One axial piston pump for swing function. • Directional Valves: Multiple pressure and flow compensated valves with integrated relief valves controlled by electrical signals. • Pump output: 154 gpm/582 l/min @ 2200 RPM engine speed. 5,000 psi (345 bar) maximum pressure • Reservoir 227 gallon (861 liter) capacity, filler breather cap, sight gauge, cleanout, and sump drain. • Filtration: Three 5 micron, full flow tank mounted return filters with electrical clogging indicator. 2 micron pilot oil in-line pressure filter
Optional Equipment	• 31.5 in (800mm) 3-bar semi grousers, and 35.4 in (900mm) steel flat track shoes • Work Platform: Model WP750 - 36 in x 72 in (0.9m x 1.8m), all steel, welded, two person platform with maximum capacity of 750 lbs (340 kg). • Cold Weather Packages: Cold weather options are available for operation to -40°F / -40°C • Controlled free fall winches • Hydraulic tool Circuit • Radio remote control • Auger Package - mounts to boom second stage for variable radius operation

WORKING RANGE



DIMENSIONS



TADANO MANTIS Corporation

1705 Columbia Avenue Franklin, Tennessee 37064, U.S.A.

Phone: +1-800-272-3325 Fax: +1-615-790-6803

<http://www.mantisranes.com/> E-mail: sales@mantisranes.com

TADANO LTD. (International Division)

4-12, Kamezawa 2-chome, Sumida-ku Tokyo 130-0014, Japan

Phone: 81-3-3621-7750 Fax: 81-3-3621-7785

<http://www.tadano.com> E-mail: info@tadano.com

TMC-DI-734-11 02/17

Specifications are subject to change without prior notice.

Courtesy of Crane.Market